

**SCHOOL PLEDGE**

Right now, today, this very  
moment, I am capable of giving  
myself,  
the gift of absolute self-assurance,  
self-belief, and powerful non-stop confidence in myself.



**“ TO THROUGH AND BEYOND COLLEGE ”**

*This Year's Theme >>>>> “Impact and Outcome”*

**Notes from the Principal's Desk**

Happy Monday Families,  
Let me first thank all of the families who came out and joined me for the Meet and Greet/Parent Orientation, you made it a success. A huge shout out those families who ensured students were on time and in complete uniform. This week, we begin our curriculum for all content areas: Reading, Writing, Science, Math, and Social Studies. It is imperative that students arrive when doors open at 7:50, as students are tardy after 8:05. AS a reminder, every minute a student is late to school, it impacts their academics. Do not forget to check your student's backpack daily, as homework will be issued moving forward.

**Daily Attendance Matters!**

Here are a few practical tips to help support regular attendance:

- Make sure your children keep a regular bedtime and establish a morning routine.
- Lay out clothes and pack backpacks the night before.
- Ensure your children go to school every day unless they are sick.
- Avoid scheduling vacations or doctor's appointments when school is in session.
- Talk to teachers and counselors for advice if your children feel anxious about going to school.
- Develop back up plans for getting to school or logging in (when remote) if something comes up. Call on a family member, neighbor, or another parent to take your child to school or help them log in to class.

*Ms. A. Ringo*

New Paradigm Loving Academy Principal  
(313) 252-3028  
aringo@npfeschools.org

**NEWS ALERT**

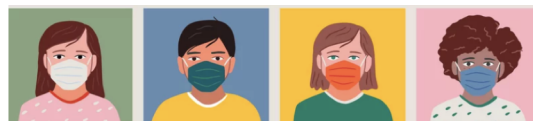
DAY	ANNOUNCEMENTS
Monday	First full week of school begins
Tuesday	NWEA Reading K-5
Wednesday	NWEA Reading K-5 continued
Thursday	NWEA Math K-5
Friday	NWEA Math K-5 continued

**UPCOMING NEWS**

Sept. 17 Saturday	Ice Cream Social
Sept. 28th	½ day School is dismissed at 11:30



The NWEA MAP Test (Measures of Academic Progress) is an adaptive achievement and growth test. It creates a personalized assessment experience by adapting to each student's learning level—precisely measuring progress and growth for each individual student.



**All staff, students, and visitors must wear masks while in the building.**



Saturday, September 17, 2022 parents and students are invited to attend the Annual Ice Cream Social from 11:00 AM to 1:00 PM for Parent Engagement, and Federal Programs. All PreK-12th grade families are invited to attend. This is an opportunity to collaborate and strengthen our parent and school partnership. We will also highlight Constitution Day and share a wealth of information.



## FSD SEPTEMBER REGISTRATION FAIR

for the 2022 I CAN EXCEL (ICE) PROGRAM

Field Trips, Tutoring, Coding, STEAM workshops, Go  
Fit Exercise, Leadership, and more!



Grades  
1st -12th



Classes run from  
October - May



Girls of Color

**Early  
Registration  
Discount!**

**SATURDAY, SEPTEMBER 10 &  
SATURDAY, SEPTEMBER 17**

**11:00 A.M. -3:00 P.M.**

FIND US ON FACEBOOK & IG  
@FIGURESKATINGINDETROIT  
[WWW.FIGURESKATINGINDETROIT.ORG](http://WWW.FIGURESKATINGINDETROIT.ORG)

**FSD COMMUNITY GARDEN  
5715-33 HOLCOMB AT CH  
DETROIT, MI 48213**



# INSTRUCTIONAL PRIORITIES

REFINED



NEW PARADIGM  
FOR EDUCATION

Integrate reading, writing and discussion in all content areas to provide cohesive instruction and opportunities for productive struggle.

Provide effective feedback to students that affirms what they have done well and guides them toward academic improvement and achievement of learning goals.

Study and leverage student-level data on a regular and consistent basis to identify learning opportunities and create plans to address them.

Use rubrics as tools to provide a shared language with clear guidelines and expectations to provide a measure, adjust and evaluate learning.

## A Day in the Life of a Loving Scholar

- ❑ Arrival 7:50 a.m. Doors open
- ❑ Dismissal 3:30 p.m.
- ❑ Student Schedule (In Classroom Cohort):
  - ❑ SFA 90 min./60 min.
  - ❑ Math 90 min./60 min.
  - ❑ Lunch 30 min.
  - ❑ Writing 45 min.
  - ❑ Science/Social Studies 45 min.
  - ❑ P.E. 45 min.
  - ❑ Class Council w SEL 30 min.
  - ❑ Intervention block 25-30 min.

## Homework Expectations:

- Students will have daily homework for math and reading
- Math H.W. is called C3's
- Reading H.W. is called Read and Respond

Students must complete and return homework everyday as it will impact their overall academic grades. If you have any questions about the assignments please reach out to their teacher for clarity and support

Uniform Policy- The uniform policy will be enforced daily. Students will only be allowed to wear gym shoes during P.E. Please read the student handbook for additional information.

Boys-Navy pants, white short/long sleeve button up shirts, black casual shoes

Girls-Navy pants or skirts, white short/long sleeve button up shirts, black casual shoes

*Parents are the ultimate role models for children. Every word, movement and action has an effect. No other person or outside force has a greater influence on a child than the parent.*



# New Paradigm Loving Academy

## 2022-2023 Calendar

### NP Loving Academy

August 2	New Staff start date
August 8	Staff Returns
August 1-27	Staff Professional Development
<b>August 29-Sept 1</b>	<b>First week ½ day for Students/Staff PD</b>
September 2-5	Labor Day Weekend – School Closed
September 6	<i>Return to School</i>
September 12	Preschool First Full Day of School
September 17	Ice Cream Social
September 28	½ day for Students/Staff PD
October 5	Count Day
October 20	½ day – Parent/Teacher Conference 1p-6p
November 4	End of Quarter I
November 18	½ day Students /Staff PD
November 23-25	Thanksgiving Break – School Closed
November 28	<i>Return to School</i>
December 7	Parent/Teacher Conference 4:30p - 7:00p
December 16	½ day Students / Staff PD
December 19	Winter Break Begins – School Closed
January 3, 2023	<i>Return to School</i>
January 16	Dr. MLK Observances – School Closed
January 25	½ day for Students/Staff PD
January 27	End of Quarter II
February 15	½ day for Students/Staff PD
February 20-24	Mid-Winter Break – School Closed
February 27	<i>Return to School</i>
March 8	Parent/Teacher Conference 4:30p - 7:00p
March 22	½ day for Students/Staff PD
March 31	End of Quarter III
April 7	Good Friday – School Closed
April 10-14	Spring Break – School Closed
April 17	<i>Return to School</i>
May 29-30	Memorial Weekend – School Closed
May 31	<i>Return to School</i>
June 7	½ day Students / Staff PD/HS Graduation
June 16	Last Day of School for students
June 20	Last Day of School for staff

### Half Day Dismissal Times

11:30 am

Calendar is subject to additional changes

7/28/2022

AUGUST 2022						
S	M	T	W	Th	F	S
	1	2	3	4	5	6
7	8	9	10	11	12	13
14	15	16	17	18	19	20
21	22	23	24	25	26	27
28	29	30	31			

FEBRUARY 2023						
S	M	T	W	Th	F	S
			1	2	3	4
5	6	7	8	9	10	11
12	13	14	15	16	17	18
19	20	21	22	23	24	25
26	27	28				

SEPTEMBER 2022						
S	M	T	W	Th	F	S
				1	2	3
4	5	6	7	8	9	10
11	12	13	14	15	16	17
18	19	20	21	22	23	24
25	26	27	28	29	30	

MARCH 2023						
S	M	T	W	Th	F	S
			1	2	3	4
5	6	7	8	9	10	11
12	13	14	15	16	17	18
19	20	21	22	23	24	25
26	27	28	29	30	31	

OCTOBER 2022						
S	M	T	W	Th	F	S
						1
2	3	4	5	6	7	8
9	10	11	12	13	14	15
16	17	18	19	20	21	22
23	24	25	26	27	28	29
30	31					

APRIL 2023						
S	M	T	W	Th	F	S
						1
2	3	4	5	6	7	8
9	10	11	12	13	14	15
16	17	18	19	20	21	22
23	24	25	26	27	28	29
30						

NOVEMBER 2022						
S	M	T	W	Th	F	S
		1	2	3	4	5
6	7	8	9	10	11	12
13	14	15	16	17	18	19
20	21	22	23	24	25	26
27	28	29	30			

MAY 2023						
S	M	T	W	Th	F	S
	1	2	3	4	5	6
7	8	9	10	11	12	13
14	15	16	17	18	19	20
21	22	23	24	25	26	27
28	29	30	31			

DECEMBER 2022						
S	M	T	W	Th	F	S
			1	2	3	
4	5	6	7	8	9	10
11	12	13	14	15	16	17
18	19	20	21	22	23	24
25	26	27	28	29	30	31

JUNE 2023						
S	M	T	W	Th	F	S
				1	2	3
4	5	6	7	8	9	10
11	12	13	14	15	16	17
18	19	20	21	22	23	24
25	26	27	28	29	30	

JANUARY 2023						
S	M	T	W	Th	F	S
1	2	3	4	5	6	7
8	9	10	11	12	13	14
15	16	17	18	19	20	21
22	23	24	25	26	27	28
29	30	31				

JULY 2023						
S	M	T	W	Th	F	S
						1
2	3	4	5	6	7	8
9	10	11	12	13	14	15
16	17	18	19	20	21	22
23	24	25	26	27	28	29
30	31					