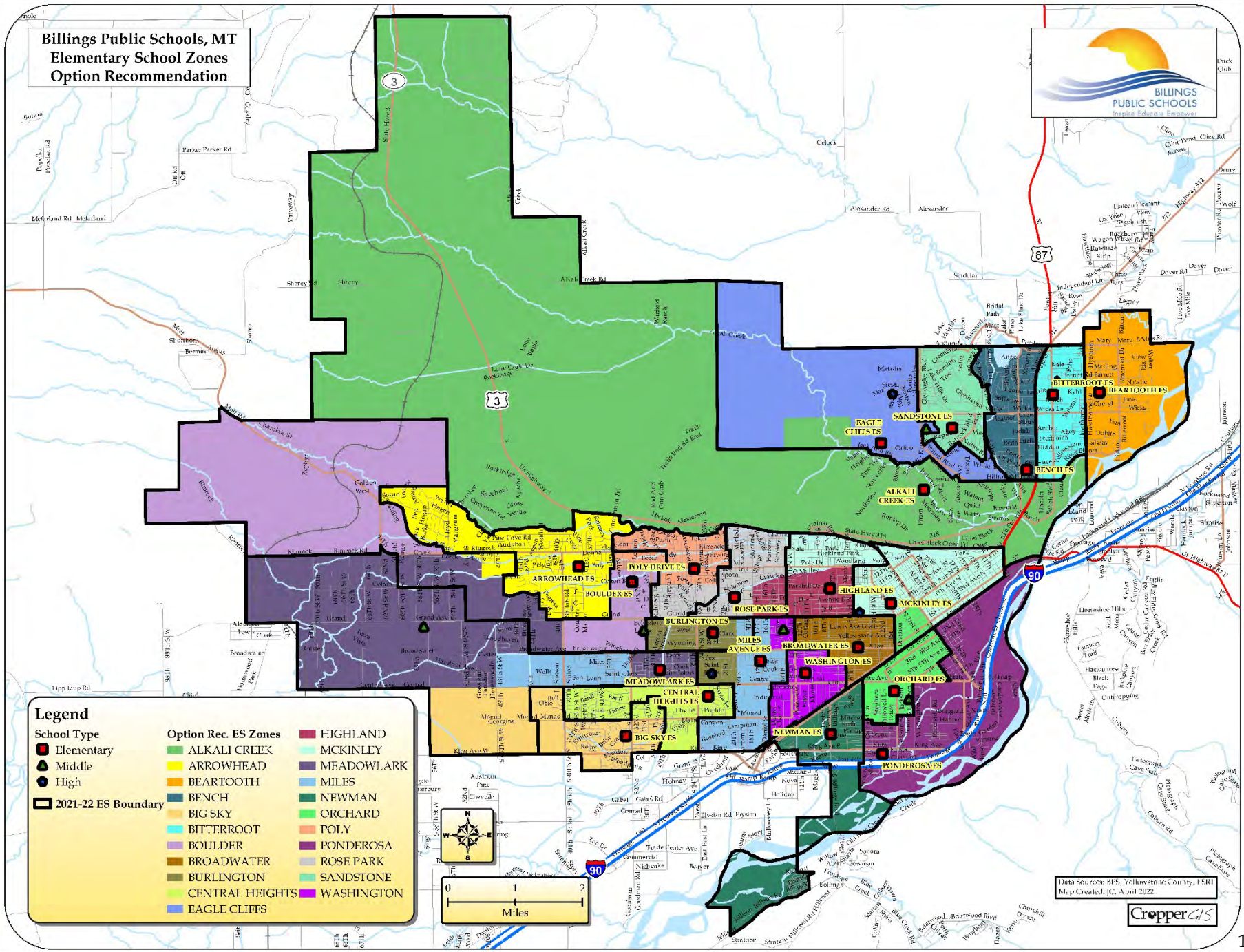


# Billings Public Schools, MT Elementary School Zones Option Recommendation



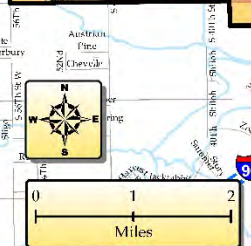
**Legend**

**School Type**

- Elementary (Red square)
- Middle (Green triangle)
- High (Blue circle)
- 2021-22 ES Boundary (Thick black line)

**Option Rec. ES Zones**

- ALKALI CREEK (Light green)
- ARROWHEAD (Yellow)
- BEAR TOOTH (Orange)
- BENCH (Light blue)
- BIG SKY (Light purple)
- BITTERROOT (Light green)
- BOULDER (Purple)
- BROADWATER (Dark purple)
- BURLINGTON (Light blue)
- CENTRAL HIGHTS (Light green)
- EAGLE CLIFFS (Light blue)
- HIGHLAND (Pink)
- MCKINLEY (Light green)
- MEADOWLARK (Dark purple)
- MILES (Light blue)
- NEWMAN (Light green)
- ORCHARD (Light green)
- POLY (Light purple)
- PONDEROSA (Dark purple)
- ROSE PARK (Light green)
- SANDSTONE (Light green)
- WASHINGTON (Light green)



Data Sources: BPS, Yellowstone County, USRI  
Map Created: JC, April 2022.

