

Elementary Academy

Detroit Edison Public School Academy



Student and Parent Newsletter Monday, November 14, 2022 Quarter 1 Week 12

Elementary Academy Pioneers Level Up

Elementary Principal, Dr. Peart

kpeart@npfeschools.org

(313) 833-1100, Ext. 1141

Door opens at 7:50 AM for K-8

Tardy after 8:05 AM

Dismissal is at 3:35 PM for K-8

School Theme: Level UP

What It Means to Level Up

L - Learn from mistakes

E - Effort increases to push forward

V - Vary strategies to succeed

E - Earn new knowledge at each level

L - Let go of a fixed mindset

U - Use hints, tools, and resources to overcome obstacles

P - Persevere to keep leveling up

Homework Expectations

- Students are expected to complete homework by their classroom teacher.
- Reading (Read and Response) and Math (C3) homework can be accessed online and must be completed weekly.
- The goal is for each class to attain a 95% return rate on homework at the end of the week.
- Homework will be checked **EVERY DAY**- thank you for helping your child build their work ethic by completing their homework every night.

Monday 11/14

Read & Response, C3 Homework

Tuesday 11/15

Read & Response, C3 Homework

Wednesday 11/16

Read & Response, C3 Homework

Thursday 11/17

Read & Response, C3 Homework

Friday 11/18

Read & Response, C3 Homework due

Academics

Week 11 was great, staff and students leveled up! We take academics and safety seriously. Please login to Power School to monitor your child's progress within their classes.

Safety and Behavior

We take academics and safety seriously. Staff remind students that they are required to meet the behavioral expectations of DEPSA. Students are expected to come to school prepared, focused, and ready to learn. Student must keep their hands to themselves and threats of any kind will not be tolerated. School personnel will enforce the code of conduct.

DeansList

We are no longer using Class Dojo. All communication with parents will be through Deanslist. Click on the link to learn more about connecting with DEPSA through Deanslist Family Portal.

FAMILY PORTAL OVERVIEW

<https://youtu.be/LJWdExKmw7Q>

DeansList for Families website

<https://youtu.be/bS54-TbScY8>

DeansList for Families Mobile App

<https://youtu.be/PofOGNOF0Rg>

Tutoring

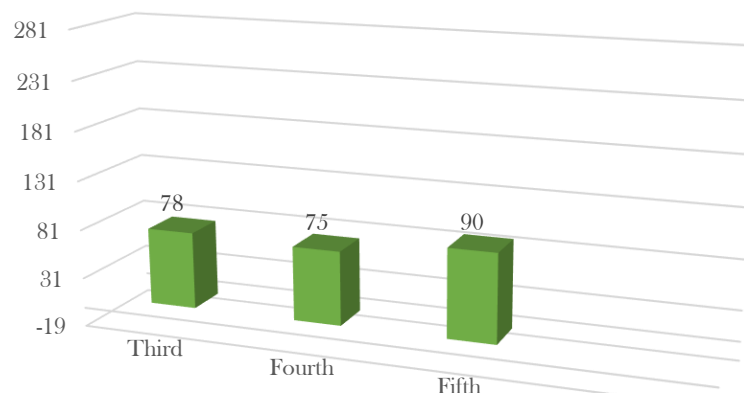
After school tutoring at DEPSA will begin on Monday, November 14, 2022. Select students based on NWEA scores were invited to participate. Tutoring days are on Mondays, Tuesdays, and Thursdays from 4:00-6:00 pm. Students must meet behavior expectations and must be picked on time to participate. Tutoring will also be held on Saturdays from 9am - 12 pm beginning on Saturday, November 19, 2022. Parents are required to drop off and pick their child up at the cafeteria doors. After 2 late pick ups your child will not be able to participate in tutoring.

Attendance Challenge

Chronic absenteeism can cause poor grades and is defined as **missing at least 10 percent (18 days) of days in a school year for any reason, including excused and unexcused absences**. If you need support, please contact Dr. Peart at kpeart@npfeschools.org

Currently 56% of students have been identified as chronically absent per the state of Michigan. Please make sure your child attends school daily. We have begun our attendance challenge. Classes with 100% attendance by the end of the week will be rewarded. Chronic absenteeism can cause poor grades and is defined as missing at least 10 percent (18 days) of days in a school year for any reason, including excused and unexcused absences. If you need support, please contact Dr. Peart at kpeart@npfeschools.org

Chronically Absent Students September-October 2022



Important Dates

No School for Students- Friday, November 18

Thanks Giving Break (School Closed)- Wednesday, November 23

Return to school- Monday, November 28

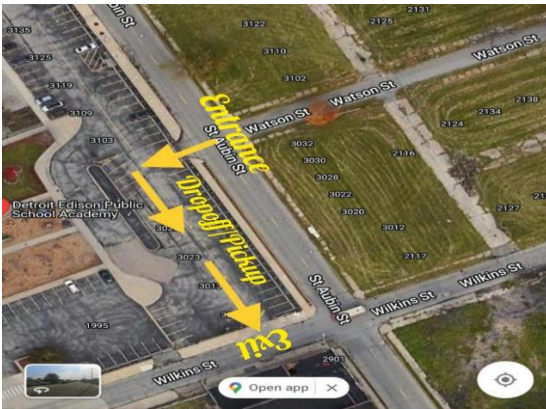
Report cards will go out Thursday, November 17, 2022

Monthly PBIS Celebration

Students who continue to meet our behavior expectations will participate in our PBIS activity Wednesday, November 22, 2022. Students can not have any suspensions during the month and not have served 3 or more detentions.

Parent Pick Up and Drop Off Map

Dismissal is at 3:30 PM.



NPFE Annual Goals

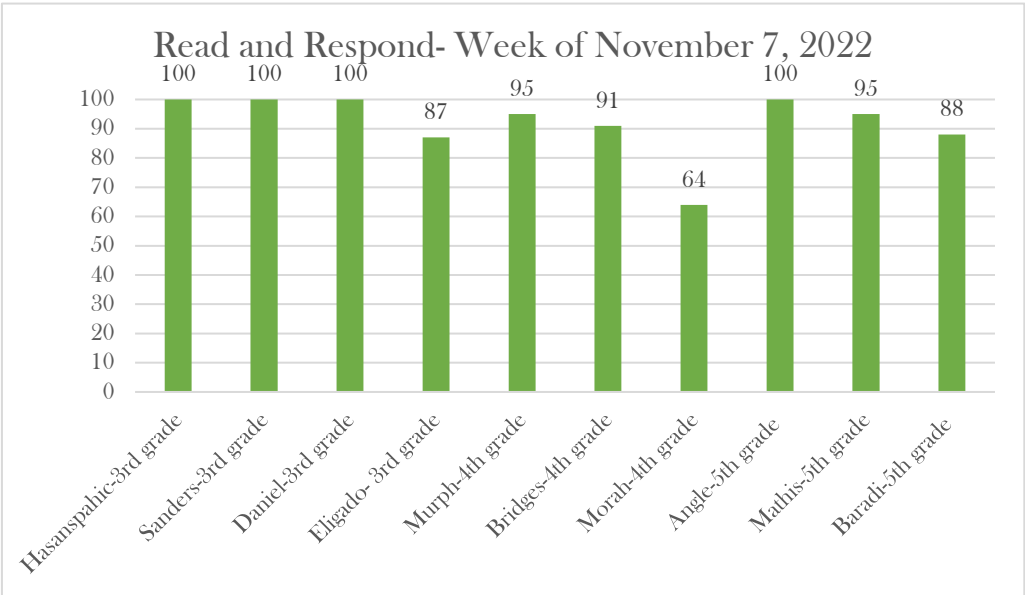
- NWEA-** 60% or more of our students will meet their NWEA GOALS fall to spring targets in both reading and math
- M-Step/PSAT-** proficiency will increase in both ELA and Math by 20% for grades 3-10
- Attendance Goals-** Average daily attendance will be at 95% by June 2023; Chronic absenteeism will decrease by 15% in comparison to the 2021-2022 school year
- Intervention-** Student usage will average 8% or higher during scheduled intervention time
- Coaching Cycle-** Leaders will complete a minimum of 8 complete coaching cycles per teacher during the 2022-2023 school year.

Read & Respond Homework

Please make sure students are completing their homework. The expectation is for students to complete homework every night and to return every day for teacher feedback. The goal is for each class to attain a 95% return rate on homework at the end of the week. Here are the results of last week’s homework!

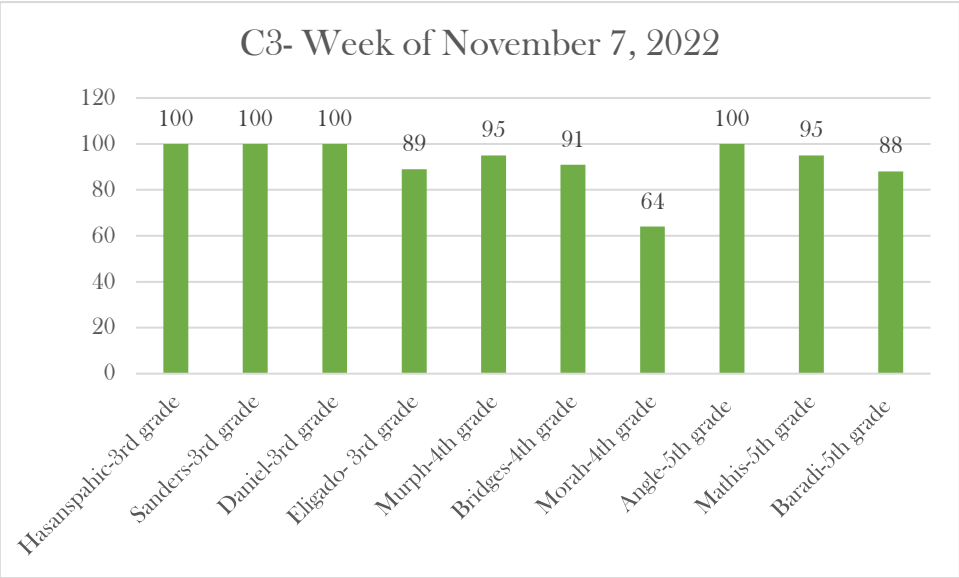
A big shout out to those classes below who had 95% or higher: Ms. Hasanspahic, Mr. Sanders, Ms. Daniel, Ms. Angle, and Ms. Mathis

Shout out to Ms. Bridges class for improving their return rate.



C3 Homework

A big shout out to those classes below who had 95% or higher: Ms. Hasanspahic, Mr. Sanders, Ms. Daniel, Ms. Murph, Ms. Morah, Ms. Angle, and Ms. Mathis, Ms. Baradi



Staff Information

Teacher	Grade	Room #	Email	Extension
Ms. Daniel	3	142	Mdaniel@npfeschools.org	1142
Ms. Eligado	3	122	Meligado@npfeschools.org	1122
Ms. Hasanspahic	3	143	dhasanpahic@npfeschools.org	1143
Mr. Sanders	3	123	Tsanders@npfeschools.org	1123
Ms. Bridges	4	128	Sbridges@npfeschools.org	1128
Ms. Morah	4	126	Amorah@npfeschools.org	1126
Ms. Murph	4	127	Cmurph@npfeschools.org	1127
Ms. Angle	5	135	Aangle@npfeschools.org	1135
Ms. Mathis	5	129	Dmathis@npfeschools.org	1129
Ms. Baradi	5	136	kbaradi@npfeschools.org	1136

Student Schedule

TIME	3	4	5
7:50 AM	ARRIVAL	ARRIVAL	ARRIVAL
7:50-8:05 AM	BREAKFAST	BREAKFAST	BREAKFAST
8:05 AM	TARDY	TARDY	TARDY
8:00-8:15 AM	SEL/GAT/CLASS COUNCIL	SEL/GAT/CLASS COUNCIL	SEL/GAT/CLASS COUNCIL
8:15 - 9:45 AM	SFA	SFA	SFA
9:50 - 10:50 AM	MATH	MATH	MATH
10:55 - 11:25 AM	INTERVENTION	INTERVENTION	SOC STUD 10:55 - 11:30 AM
11:30 - 11:55 AM	LUNCH	LUNCH	INTERVENTION
11:55 - 12:10 PM	RECESS	RECESS	WRITING
12:15 - 12:45 PM	PBL	PBL	
12:45 - 1:25 PM	SPECIAL	WRITING	LUNCH/RECESS
1:30 - 2:15 PM	WRITING	SPECIAL	SCIENCE
2:15 - 2:55 PM	SCIENCE	SCIENCE	SPECIAL
2:55 - 3:35 PM	SOC STUDIES	SOC STUDIES	PBL 3:00 - 3:30PM
3:35 PM	LOCKER DISMISSAL	LOCKER DISMISSAL	LOCKER DISMISSAL

IT WILL BE A GREAT SCHOOL YEAR!

Deadline Extended! Please sign up, DEPSA will cover the cost!

Read by 3rd Grade and Attendance


“ In 2016, the Michigan Legislature passed a law that requires schools to identify learners who are struggling with reading and writing and to provide additional help. The law states that third graders may repeat third grade if they are more than one grade level behind beginning with the 2019-2020 school year.” At DEPSA we have a multi-tier support system to ensure all students have equitable access to high quality instruction and intervention to meet the needs of individual students.

LET’S LEVEL UP THIS WEEK

What It Means to Level Up

- L** - Learn from mistakes
 - E** - Effort increases to push forward
 - V** - Vary strategies to succeed
 - E** - Earn knew knowledge at each level
 - L** - Let go of a fixed mindset
-
- U** - Use hints, tools, and resources to overcome obstacles
 - P** - Persevere to keep leveling up





Detroit Edison Public School Academy

Karate/Self Defense Classes

1903 Wilkins at St. Aubin – Detroit, MI 48207

Five reasons to enroll your Child in Martial Arts:

1. Physical Fitness
Just like with adults, one of the most common reasons for enrolling a child into a martial arts class is fitness. Childhood obesity rates are climbing, and more and more children are spending a lot more time in front of the television, playing video games and using a computer.

2. Life Skills
Another popular reason for enrolling children in the martial arts is to develop "Life Skills". These skills include discipline, self control, patience, confidence and courage etc.

3. Self Defense
Self defense is the most obvious reason that should come to mind when considering enrolling a child in the martial arts. The focus of a good children's martial arts class, while still teaching self defense movements, should be on conflict resolution, personal responsibility and hostility avoidance.

4. Behavior Issues
Many parents turn to the martial arts when their children are acting out in school and home. These parents are looking for help improving attention span, respect, demeanor and self control. The structure of many martial arts classes can greatly aid in these areas.

5. Safe, Physical Activity
Many parents are just seeking a safe, wholesome, useful activity for their child to occupy some of their free time. Martial arts will make them set and follow through on goals. Whatever reasons you have for enrolling your child in a martial arts class, be sure to discuss your goals with your child, and come to an understanding that will make both of you happy.

Detroit Edison Public School Academy Monday's Class Start: October 24, 2022 Tang Soo Do/Korean Karate Time: 04:00 pm - 05:30 pm	Detroit Edison Public School Academy Wednesday's Class Start: October 26, 2022 Tang Soo Doo/Korean Karate Time: 04:00 pm - 05:30 pm
Tuition Cost: \$60.00 (Per Student) (Per month) * (6-months course) Total \$60.00 due first class.	Master Ernest Took 6th Degree Black Belt (313) 690-1468 Cell



Detroit Edison Public School Academy

2022-2023 Calendar

DEPSA

August 2	New Staff start date
August 8	Staff Returns
August 1-27	Staff Professional Development
August 29-Sept 1	First week ½ day for Students/Staff PD
September 2-5	Labor Day Weekend – School Closed
September 6	<i>Return to School</i>
September 12	Preschool First Full Day of School
September 17	Ice Cream Social
September 28	½ day for Students/Staff PD
October 5	Count Day
October 20	½ day – Parent/Teacher Conference 1p-6p
November 4	End of Quarter I
November 18	½ day Students /Staff PD
November 23-25	Thanksgiving Break – School Closed
November 28	<i>Return to School</i>
December 7	Parent/Teacher Conference 4:30p - 7:00p
December 16	½ day Students / Staff PD
December 19	Winter Break Begins – School Closed
January 3, 2023	<i>Return to School</i>
January 16	Dr. MLK Observances – School Closed
January 25	½ day for Students/Staff PD
January 27	End of Quarter II
February 15	½ day for Students/Staff PD
February 20-24	Mid-Winter Break – School Closed
February 27	<i>Return to School</i>
March 8	Parent/Teacher Conference 4:30p - 7:00p
March 22	½ day for Students/Staff PD
March 31	End of Quarter III
April 7	Good Friday – School Closed
April 10-14	Spring Break – School Closed
April 17	<i>Return to School</i>
May 29-30	Memorial Weekend – School Closed
May 31	<i>Return to School</i>
June 7	½ day Students / Staff PD/HS Graduation
June 16	Last Day of School for students
June 20	Last Day of School for staff

Half Day Dismissal Times

11:30 am

Calendar is subject to additional changes

7/28/2022



AUGUST 2022						
S	M	T	W	Th	F	S
	1	2	3	4	5	6
7	8	9	10	11	12	13
14	15	16	17	18	19	20
21	22	23	24	25	26	27
28	29	30	31			

FEBRUARY 2023						
S	M	T	W	Th	F	S
			1	2	3	4
5	6	7	8	9	10	11
12	13	14	15	16	17	18
19	20	21	22	23	24	25
26	27	28				

SEPTEMBER 2022						
S	M	T	W	Th	F	S
				1	2	3
4	5	6	7	8	9	10
11	12	13	14	15	16	17
18	19	20	21	22	23	24
25	26	27	28	29	30	

MARCH 2023						
S	M	T	W	Th	F	S
			1	2	3	4
5	6	7	8	9	10	11
12	13	14	15	16	17	18
19	20	21	22	23	24	25
26	27	28	29	30	31	

OCTOBER 2022						
S	M	T	W	Th	F	S
						1
2	3	4	5	6	7	8
9	10	11	12	13	14	15
16	17	18	19	20	21	22
23	24	25	26	27	28	29
30	31					

APRIL 2023						
S	M	T	W	Th	F	S
						1
2	3	4	5	6	7	8
9	10	11	12	13	14	15
16	17	18	19	20	21	22
23	24	25	26	27	28	29
30						

NOVEMBER 2022						
S	M	T	W	Th	F	S
		1	2	3	4	5
6	7	8	9	10	11	12
13	14	15	16	17	18	19
20	21	22	23	24	25	26
27	28	29	30			

MAY 2023						
S	M	T	W	Th	F	S
	1	2	3	4	5	6
7	8	9	10	11	12	13
14	15	16	17	18	19	20
21	22	23	24	25	26	27
28	29	30	31			

DECEMBER 2022						
S	M	T	W	Th	F	S
				1	2	3
4	5	6	7	8	9	10
11	12	13	14	15	16	17
18	19	20	21	22	23	24
25	26	27	28	29	30	31

JUNE 2023						
S	M	T	W	Th	F	S
				1	2	3
4	5	6	7	8	9	10
11	12	13	14	15	16	17
18	19	20	21	22	23	24
25	26	27	28	29	30	

JANUARY 2023						
S	M	T	W	Th	F	S
1	2	3	4	5	6	7
8	9	10	11	12	13	14
15	16	17	18	19	20	21
22	23	24	25	26	27	28
29	30	31				

JULY 2023						
S	M	T	W	Th	F	S
						1
2	3	4	5	6	7	8
9	10	11	12	13	14	15
16	17	18	19	20	21	22
23	24	25	26	27	28	29
30	31					

Mission

New Paradigm for Education (NPFE) mission is to be a catalyst to grow and sustain high performing schools where scholars are empowered to be global citizens ad lifelong learners.

Vision

Every student excels as an engaged thoughtful citizen by forging new pathways to contribute to their community.

Instructional Model



Our New Paradigm Instructional Model are the pillars for the work we do every day, to set high standards for our children. We focus on setting clear goals, making sure effective instruction takes place in our classroom, ensuring we are making data driven decisions, providing timely intervention as needed, and celebrating our progress.