

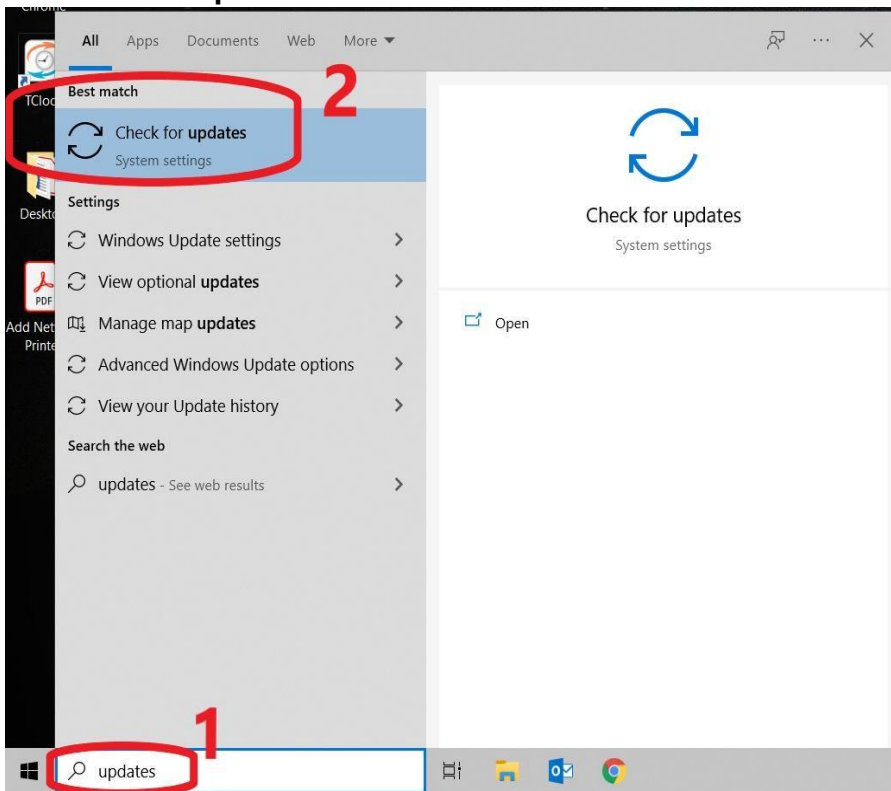
# Updating Laptop

## Before proceeding with the update please read the following:

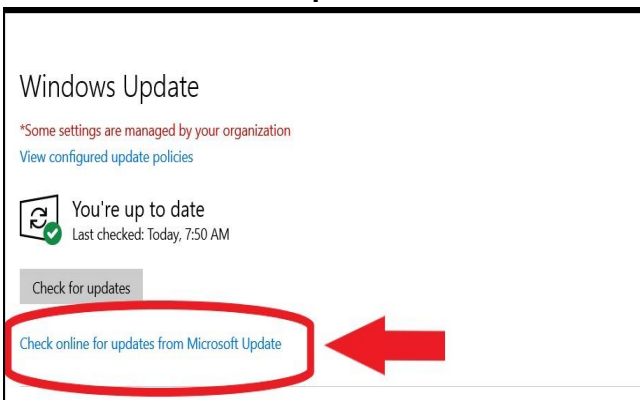
- ❖ The laptop must be connected to the docking station *at all times* during the update.
- ❖ You CAN use the laptop while the update is in progress, please note that the monitors will flash multiple times as part of the display update.
- ❖ We do suggest restarting the laptop before your lunch or after school as the final updates take more time to install.
- ❖ The update will last up to 30 min and when you reboot the laptop to finalize the update, your screen will turn black. ***\*\*Please wait until the updates are complete, the laptop will power up normally.***

## Step by Step Visual instructions

1. Bottom left hand corner, on the “Type here to search” please type “Updates”
2. Select “Check for Updates”



3. Click on “Check online for updates from Microsoft updates”



**4. Updates will start loading, you are able to use the laptop while updates are installing. Please note that the screens will flash due to the display updates.**

## Windows Update

*\*Some settings are managed by your organization*  
[View configured update policies](#)



### Updates available

Last checked: Today, 9:35 AM

HP Inc. - Firmware - 1.11.0.0

**Status:** Pending install

Security Update for Microsoft Excel 2016 (KB5002137) 32-Bit Edition

**Status:** Downloading - 100%

Security Update for Microsoft Office 2016 (KB3118335) 32-Bit Edition

**Status:** Downloading - 0%

Security Update for Microsoft Office 2016 (KB5002140) 32-Bit Edition

**Status:** Downloading - 100%

2022-02 Cumulative Update for .NET Framework 3.5 and 4.8 for Windows 10 Version 21H2 for x64 (KB5009467)

**Status:** Downloading - 54%

Windows Malicious Software Removal Tool x64 - v5.98 (KB890830)

**Status:** Pending install

2022-02 Cumulative Update for Windows 10 Version 21H2 for x64-based Systems (KB5010342)

**Status:** Downloading - 0%

HP Inc. - SoftwareComponent - 2.1.16.30156

**Status:** Pending install

HP Inc. - SoftwareComponent - 4.2.809.0

**Status:** Pending install

HP Inc. - SoftwareComponent - 1.39.2645.0

**Status:** Pending install

Update for Microsoft Office 2016 (KB5002138) 32-Bit Edition

**Status:** Pending install

**5. Laptop can be restarted as soon as all updates state "Pending Restart"**

## Windows Update

*\*Some settings are managed by your organization*  
[View configured update policies](#)



### Restart required

*\*Your device will restart outside of active hours.*

HP Development Company, L.P. - Keyboard - 11.1.8.1

**Status:** Pending restart

Security Update for Microsoft Office 2016 (KB5002112) 32-Bit Edition

**Status:** Pending restart

2022-07 Cumulative Update for Windows 10 Version 21H2 for x64-based Systems (KB5010342)

**Status:** Pending restart

HP Development Company, L.P. - Extension - 8.10.27.1

**Status:** Pending restart

2022-06 Cumulative Update for .NET Framework 3.5 and 4.8 for Windows 10 Version 21H2

**Status:** Pending restart

Intel Corporation - Display - 30.0.101.1404

**Status:** Pending restart

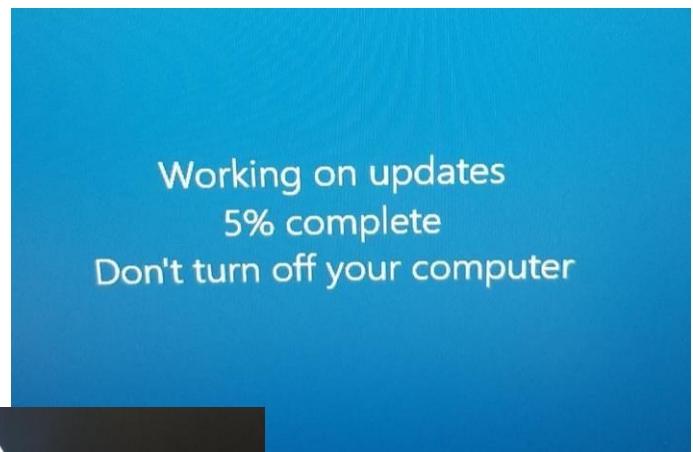
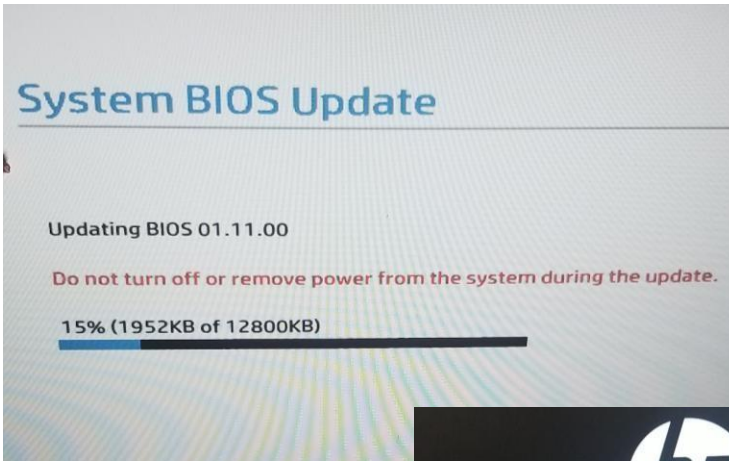
Sound Research Corp. - Extension - 16.51.65.6088

**Status:** Pending restart

HP Development Company, L.P. - System - 7.0.21.37899

**Status:** Pending restart

6. Once *ALL* the updates have completed, restart the laptop. Below are examples of how the update will look when restarted. The monitor will go black during the BIOS update, **DO NOT POWER OFF LAPTOP, IT WILL POWER BACK ON ONCE UPDATE IS COMPLETE.**



**\*\* Please note: DO NOT update to Windows 11! \*\***