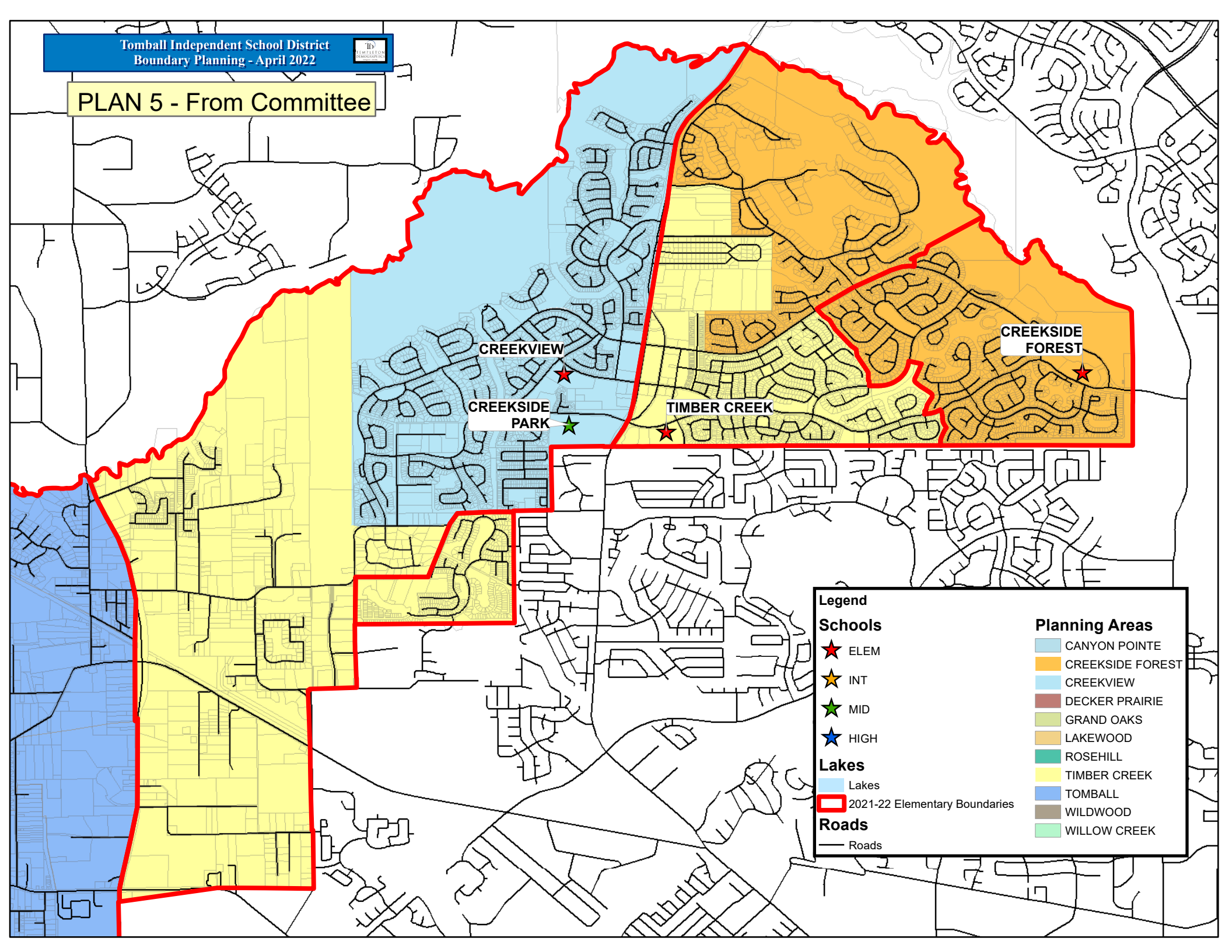




PLAN 5 - From Committee



**Legend**

**Schools**

- ★ ELEM
- ★ INT
- ★ MID
- ★ HIGH

**Lakes**

- Lakes
- 2021-22 Elementary Boundaries

**Roads**

- Roads

**Planning Areas**

- CANYON POINTE
- CREEKSIDE FOREST
- CREEKVIEW
- DECKER PRAIRIE
- GRAND OAKS
- LAKEWOOD
- ROSEHILL
- TIMBER CREEK
- TOMBALL
- WILDWOOD
- WILLOW CREEK

# TOMBALL ISD

## Plan 5 Elementary Forecast Report

SCHOOL	CAPACITY	2022/23	2023/24	2024/25	2025/26	2026/27
CREEKSIDE FOREST	714	677	676	650	633	620
CREEKVIEW	920	981	1,004	1,000	1,004	988
TIMBER CREEK	920	825	857	889	897	906
<b>TOTAL</b>	<b>2,554</b>	<b>2,483</b>	<b>2,537</b>	<b>2,539</b>	<b>2,534</b>	<b>2,514</b>

**YELLOW 95% - 100% CAPACITY**  
**ORANGE 100% - 105% OVER CAPACITY**  
**RED > 105% OVER CAPACITY**