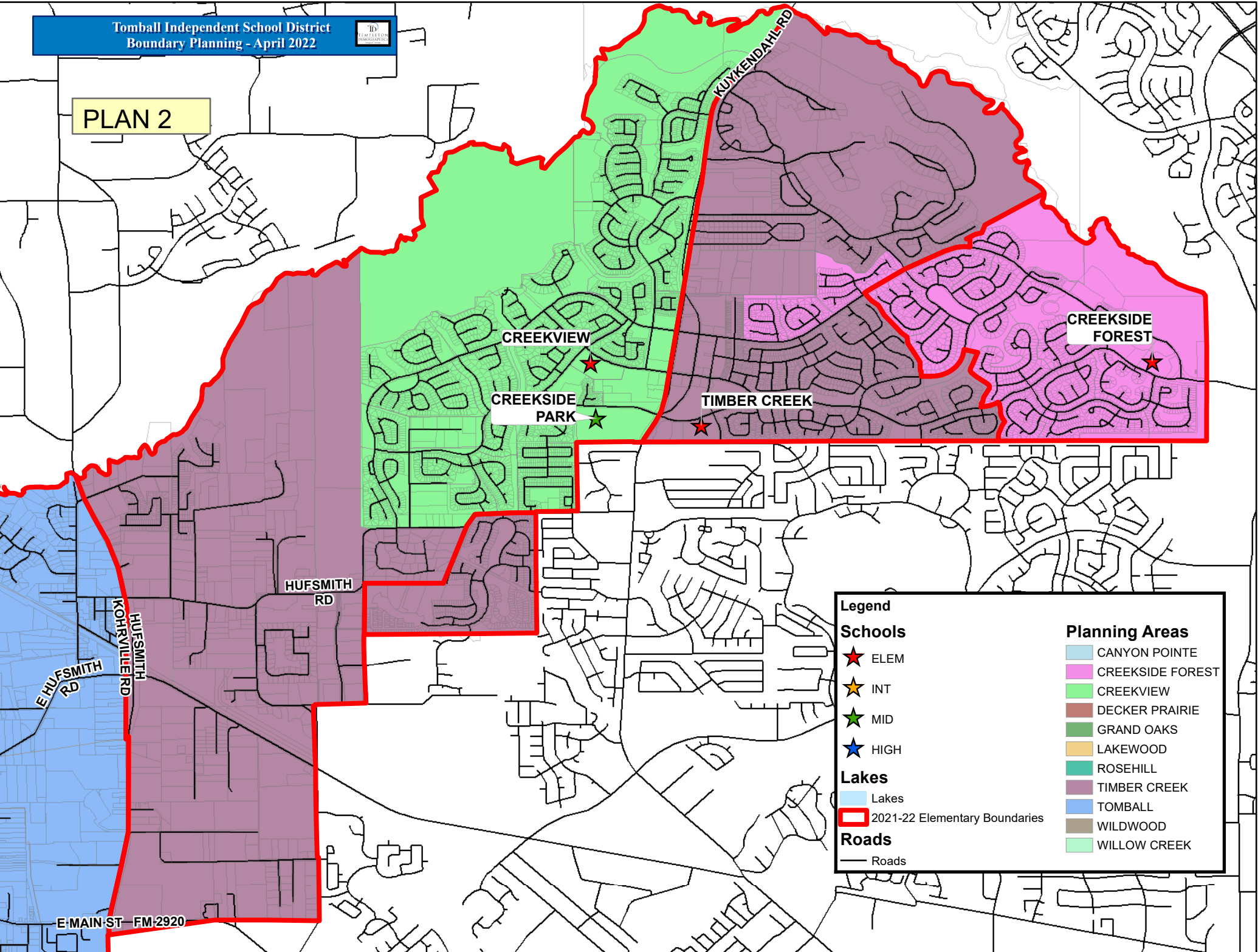


PLAN 2



Legend	
Schools	Planning Areas
★ ELEM	□ CANYON POINTE
★ INT	□ CREEKSIDE FOREST
★ MID	□ CREEKVIEW
★ HIGH	□ DECKER PRAIRIE
	□ GRAND OAKS
	□ LAKEWOOD
	□ ROSEHILL
	□ TIMBER CREEK
	□ TOMBALL
	□ WILDWOOD
	□ WILLOW CREEK
Lakes	
□ Lakes	
Roads	
— Roads	
2021-22 Elementary Boundaries	
□	

TOMBALL ISD

Plan 2 Elementary Forecast Report

SCHOOL	CAPACITY	2022/23	2023/24	2024/25	2025/26	2026/27
CREEKSIDE FOREST	714	655	651	622	602	584
CREEKVIEW	920	981	1,004	1,000	1,004	988
TIMBER CREEK	920	847	882	917	928	942
TOTAL	2,554	2,483	2,537	2,539	2,534	2,514

YELLOW 95% - 100% CAPACITY
ORANGE 100% - 105% OVER CAPACITY
RED > 105% OVER CAPACITY