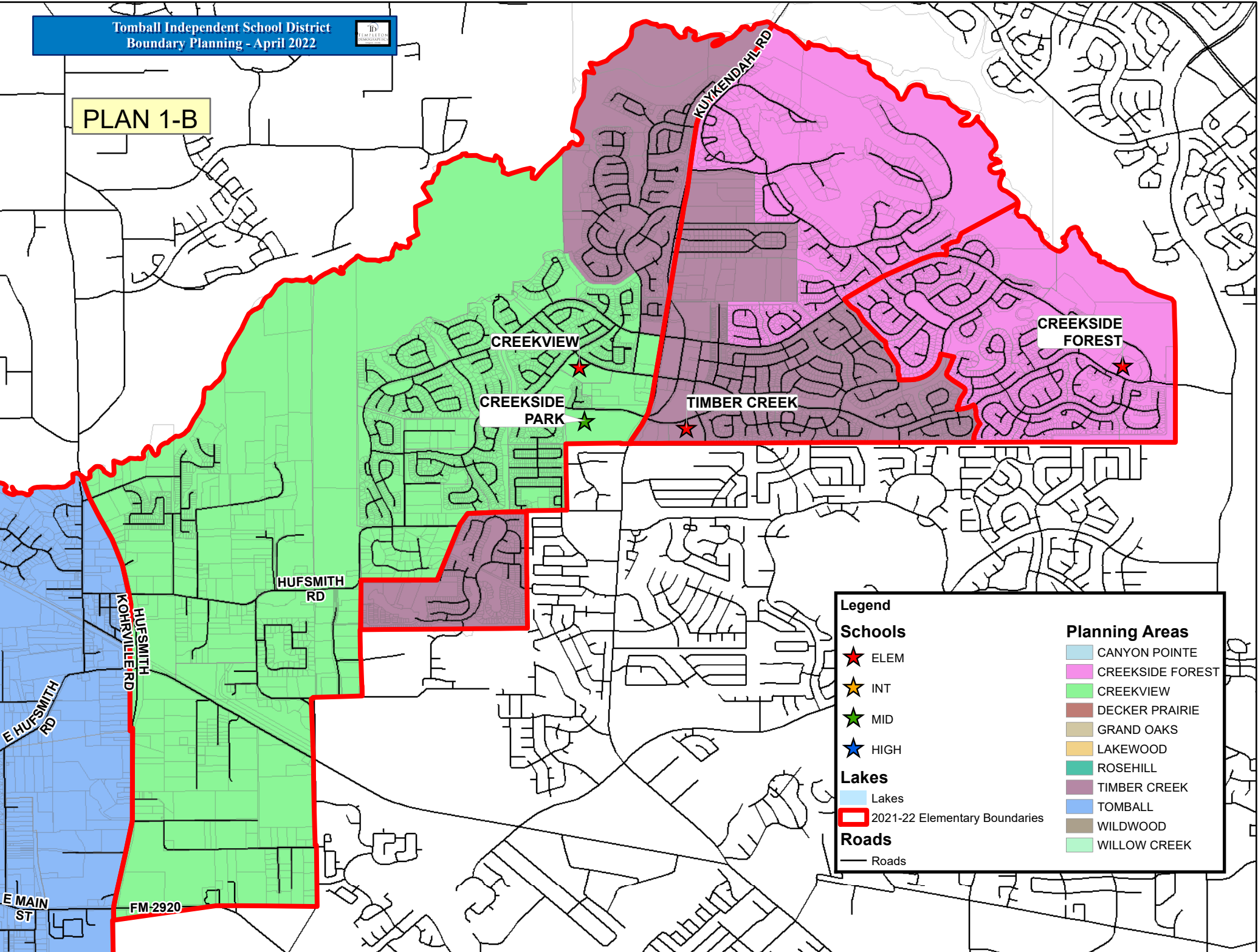




PLAN 1-B



Legend

Schools

- ★ ELEM
- ★ INT
- ★ MID
- ★ HIGH

Lakes

- Lakes
- 2021-22 Elementary Boundaries

Roads

- Roads

Planning Areas

- CANYON POINTE
- CREEKSIDE FOREST
- CREEKVIEW
- DECKER PRAIRIE
- GRAND OAKS
- LAKEWOOD
- ROSEHILL
- TIMBER CREEK
- TOMBALL
- WILDWOOD
- WILLOW CREEK

TOMBALL ISD

Plan 1-B Elementary Forecast Report

SCHOOL	CAPACITY	2022/23	2023/24	2024/25	2025/26	2026/27
CREEKSIDE FOREST	714	677	676	650	633	620
CREEKVIEW	920	933	975	973	975	961
TIMBER CREEK	920	873	886	916	926	933
TOTAL	2,554	2,483	2,537	2,539	2,534	2,514

YELLOW 95% - 100% CAPACITY
ORANGE 100% - 105% OVER CAPACITY
RED > 105% OVER CAPACITY