



2022 District Zone Committee

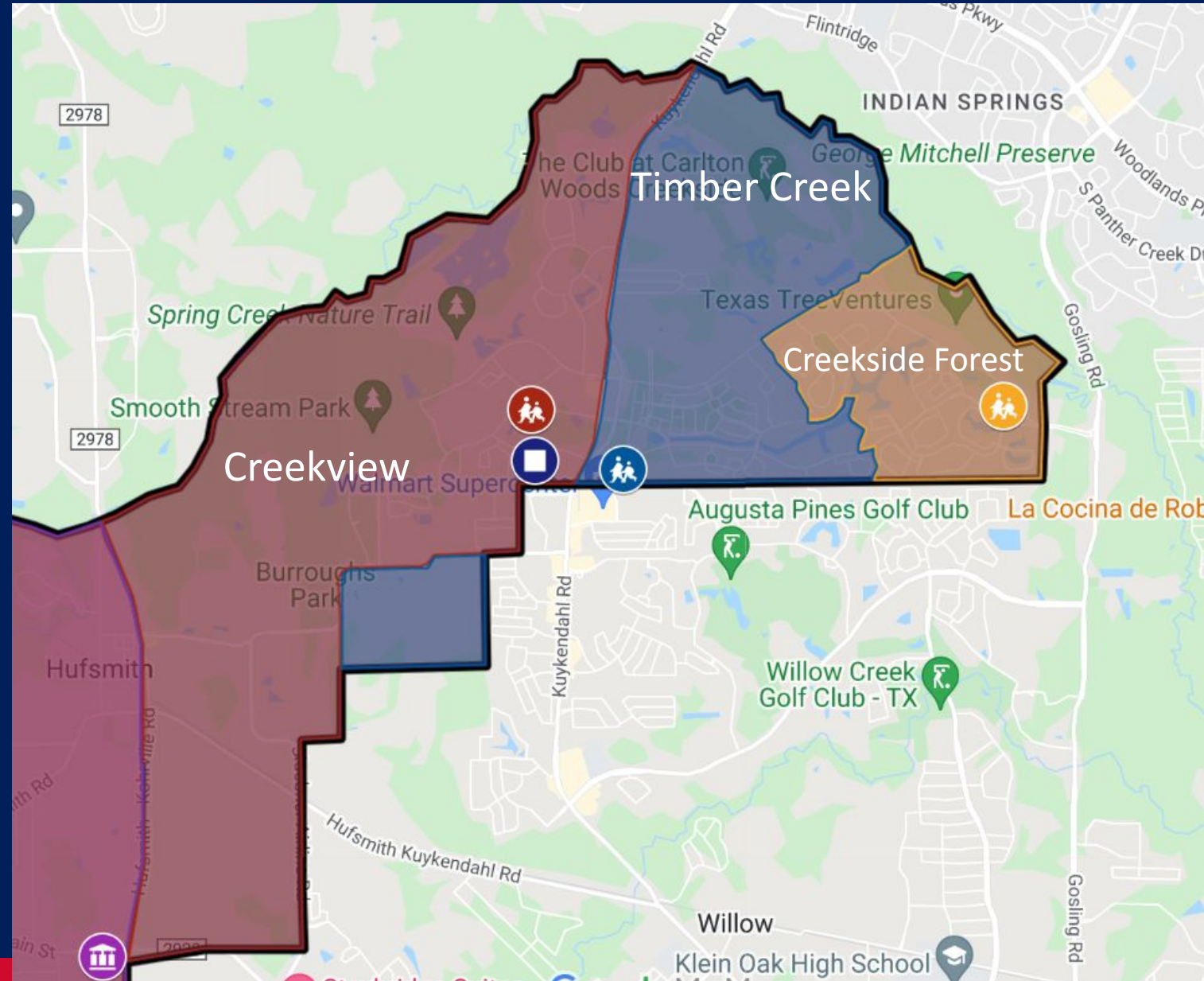
Meeting #2
TISD Boardroom
April 25, 2022

Welcome Greetings from Dr. Z



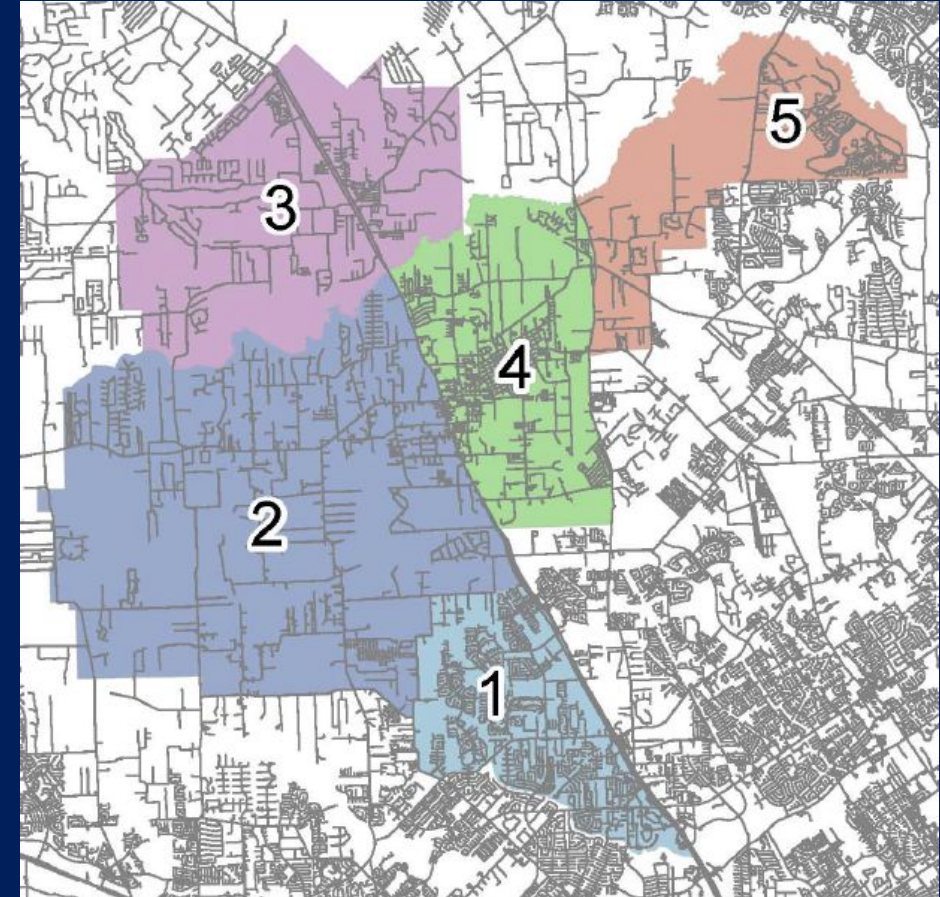
Boundary Adjustment Area

- Three elementary schools in The Woodlands:
 - Creekside Forest
 - Creekview
 - Timber Creek



Committee Overview

- Meeting #1 (April 18)
 - Provide data and context
 - Begin map exploration
- Meeting #2 (TODAY!)
 - Map exploration & plan creation
 - Plan analysis & discussion
- Meeting #3 (May 2)
 - Plan analysis & discussion
 - Vote for committee



Meeting #1 Review

- Tell your shoulder partner something you remember about last week's District demographic report



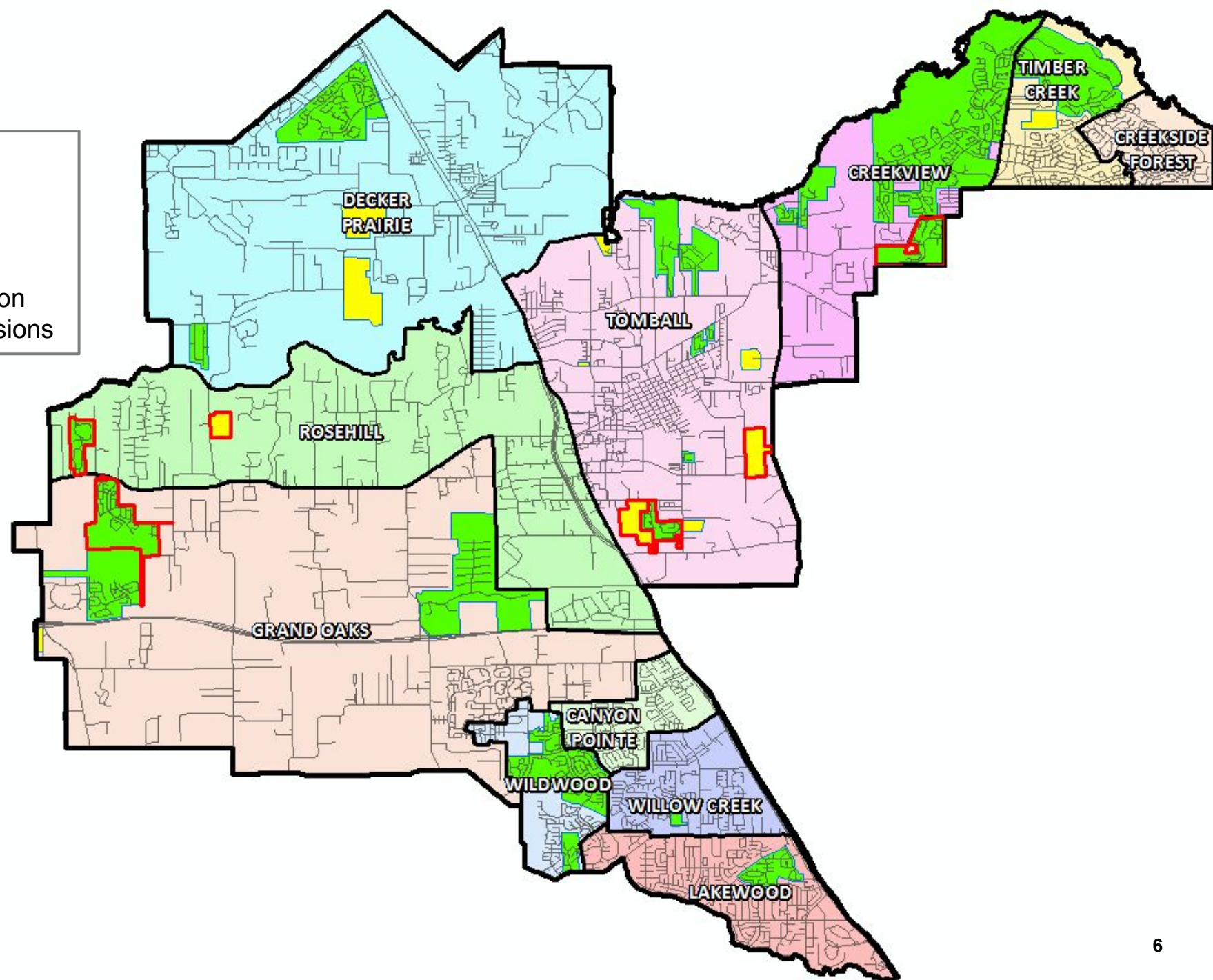


District Housing Overview

- The district has 24 actively building subdivisions
- Within TISD there are 10 future subdivisions
- Of these, groundwork is underway on more than 500 lots within 7 subdivisions

Subdivisions

-  ACTIVE
-  FUTURE
-  Groundwork Underway





District Yields



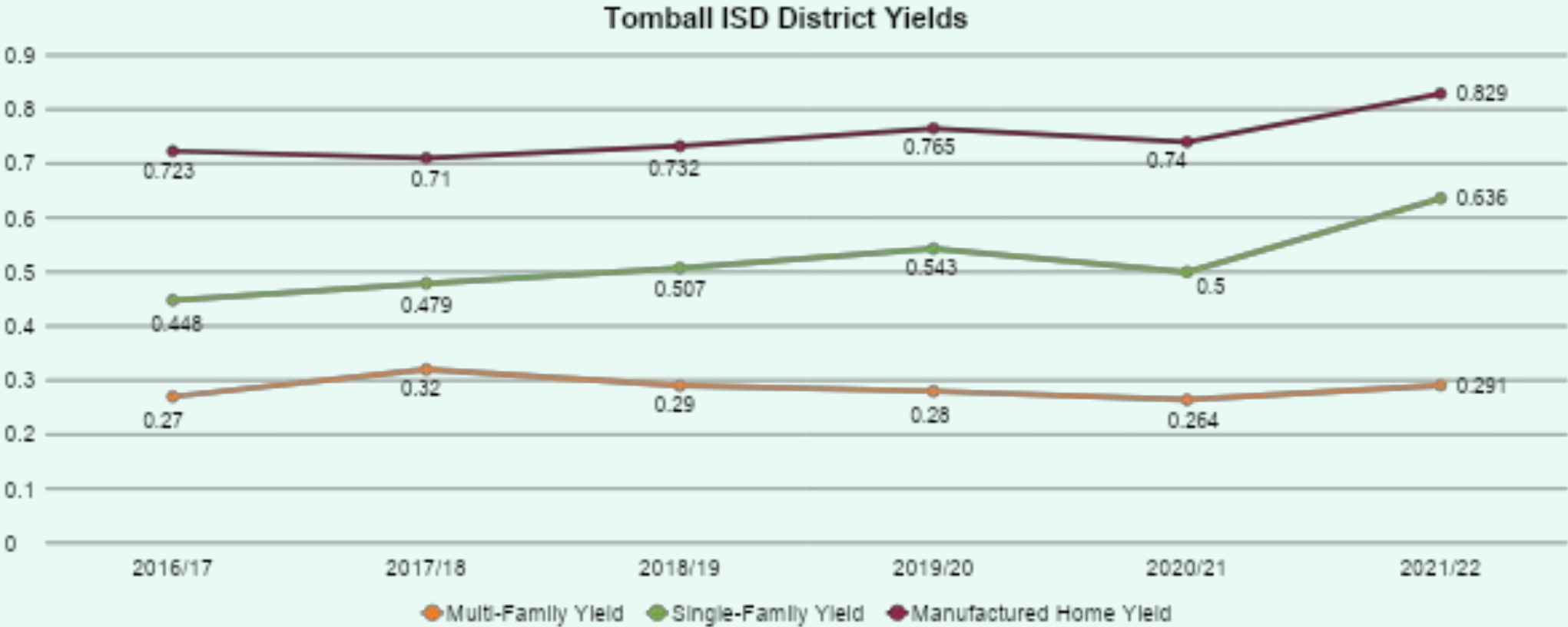
Single Family Yield
0.636



Multi-Family Yield
0.291



Manufactured Home Yield
0.829





Key Takeaways



- Tomball ISD increased by 1,585 students this fall for a 8.5% growth rate
- TISD had a historically large increase in KG, 1st, 4th, 7th, 8th, 9th, and 12th enrollment
- The district has 24 actively building subdivisions and 10 future subdivisions
- TISD will enroll approx. 24,100 students for the 2026/27 school year, and likely 26,000 by 2031/32



Ten Year Forecast by Elementary Campus

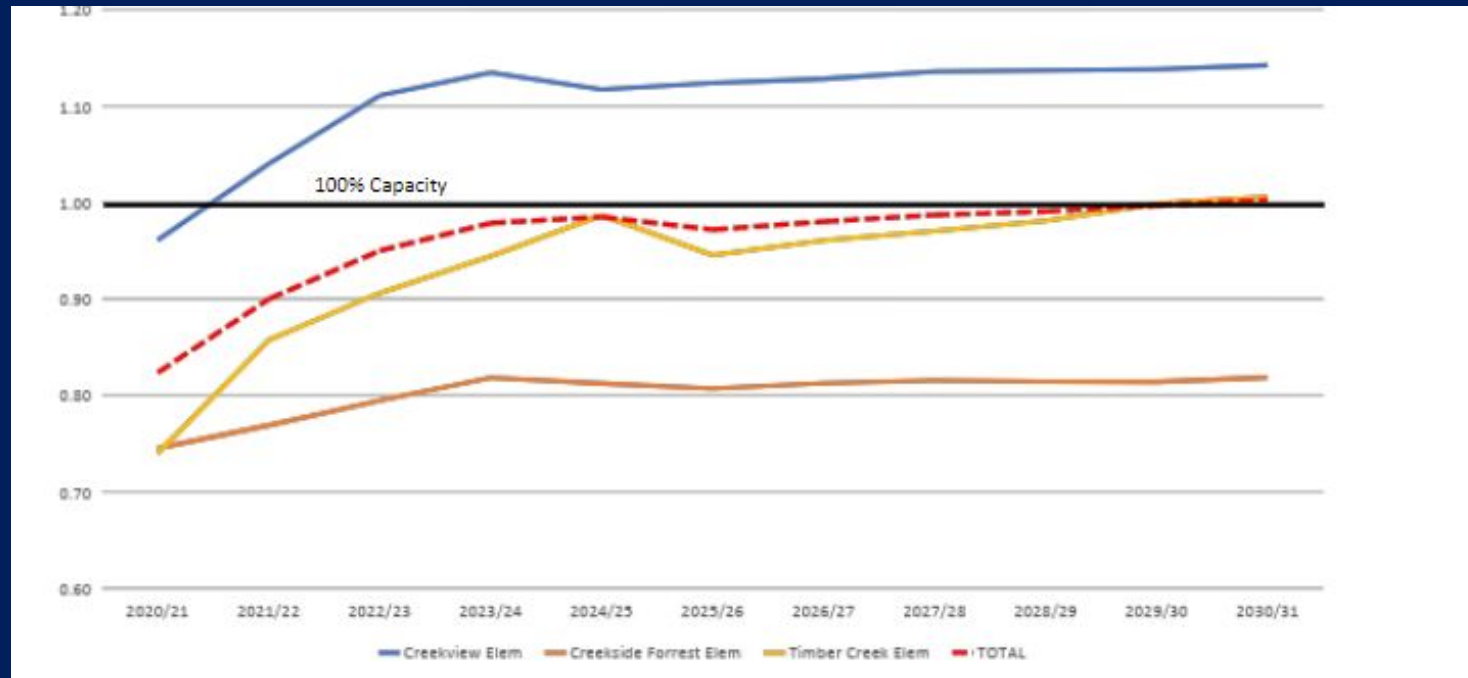
		Fall	ENROLLMENT PROJECTIONS									
Campus	Capacity	2021/22	2022/23	2023/24	2024/25	2025/26	2026/27	2027/28	2028/29	2029/30	2030/31	2031/32
Canyon Pointe Elementary (KG-4th)	856	773	742	734	742	741	748	758	770	784	787	783
Creekview Elementary (KG-5th)	920	1,017	1,095	1,134	1,119	1,117	1,099	1,105	1,110	1,114	1,122	1,128
Decker Prairie Elementary (KG-4th)	856	736	761	777	832	900	962	1,008	1,049	1,045	1,047	1,053
Lakewood Elementary (KG-4th)	886	816	793	760	734	720	737	753	768	777	792	803
Rosehill Elementary (KG-4th)	866	654	711	781	788	783	788	786	781	783	784	783
Tomball Elementary (KG-4th)	866	795	856	868	890	931	956	979	1,000	1,026	1,050	1,072
Willow Creek Elementary (KG-4th)	866	734	747	736	746	775	780	781	787	790	791	799
Creekside Forest (KG-5th)	714	572	566	560	526	510	495	495	502	501	503	510
Timber Creek Elementary (KG-5th)	920	730	771	783	823	824	838	848	856	867	880	892
Wildwood Elementary (KG-4th)	920	837	828	844	836	842	863	877	888	898	899	900
Grand Oaks Elementary (KG-4th)	920	867	1,020	1,133	1,237	1,290	1,317	1,364	1,361	1,375	1,394	1,403
ELEMENTARY SCHOOL TOTALS	9,590	8,531	8,890	9,109	9,274	9,432	9,582	9,755	9,873	9,959	10,049	10,126
Elementary Absolute Growth		825	359	219	165	158	150	173	118	86	90	77
Elementary Percent Growth		10.71%	4.21%	2.46%	1.81%	1.71%	1.59%	1.81%	1.20%	0.87%	0.90%	0.77%

Yellow box = over 105% capacity

Green box = within 5% capacity

Why are we Rezoning?

- Fast Growth District
- Building Utilization & Capacity




- Delayed Boundary Adjustment
 - Difficult but Necessary Decision

How Current Are Your Numbers?

- Fall 2021

Campus		Fall	ENROLLMENT PROJECTIONS					
Campus	Capacity	2021/22	2022/23	2023/24	2024/25	2025/26	2026/27	2027/28
Canyon Pointe Elementary (KG-4th)	856	773	742	734	742	741	748	741
Creekview Elementary (KG-5th)	920	1,017	1,095	1,134	1,119	1,117	1,099	1,099
Decker Prairie Elementary (KG-4th)	856	726	761	777	822	900	962	962

- Feb. 2022



Creekside Forest Elementary	714	537	577 81%	681 95%	690 97%	673 94%	667 93%	660 92%
Creekview Elementary	920	896	1,057 115%	922 100%	949 103%	960 104%	967 105%	957 104%
Timber Creek Elementary	920	617	755 82%	884 96%	895 97%	912 99%	911 99%	915 99%

- Spring 2022

Current Elementary Forecast Report

SCHOOL	CAPACITY	2022/23	2023/24	2024/25	2025/26	2026/27
CREEKSIDE FOREST	714	569	570	541	523	505
CREEKVIEW	920	1,143	1,191	1,187	1,191	1,172
TIMBER CREEK	920	771	776	811	820	837

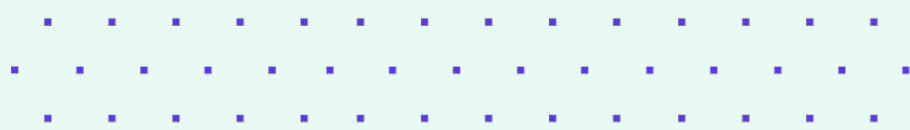


Spring Update

Woodland Boundary Work



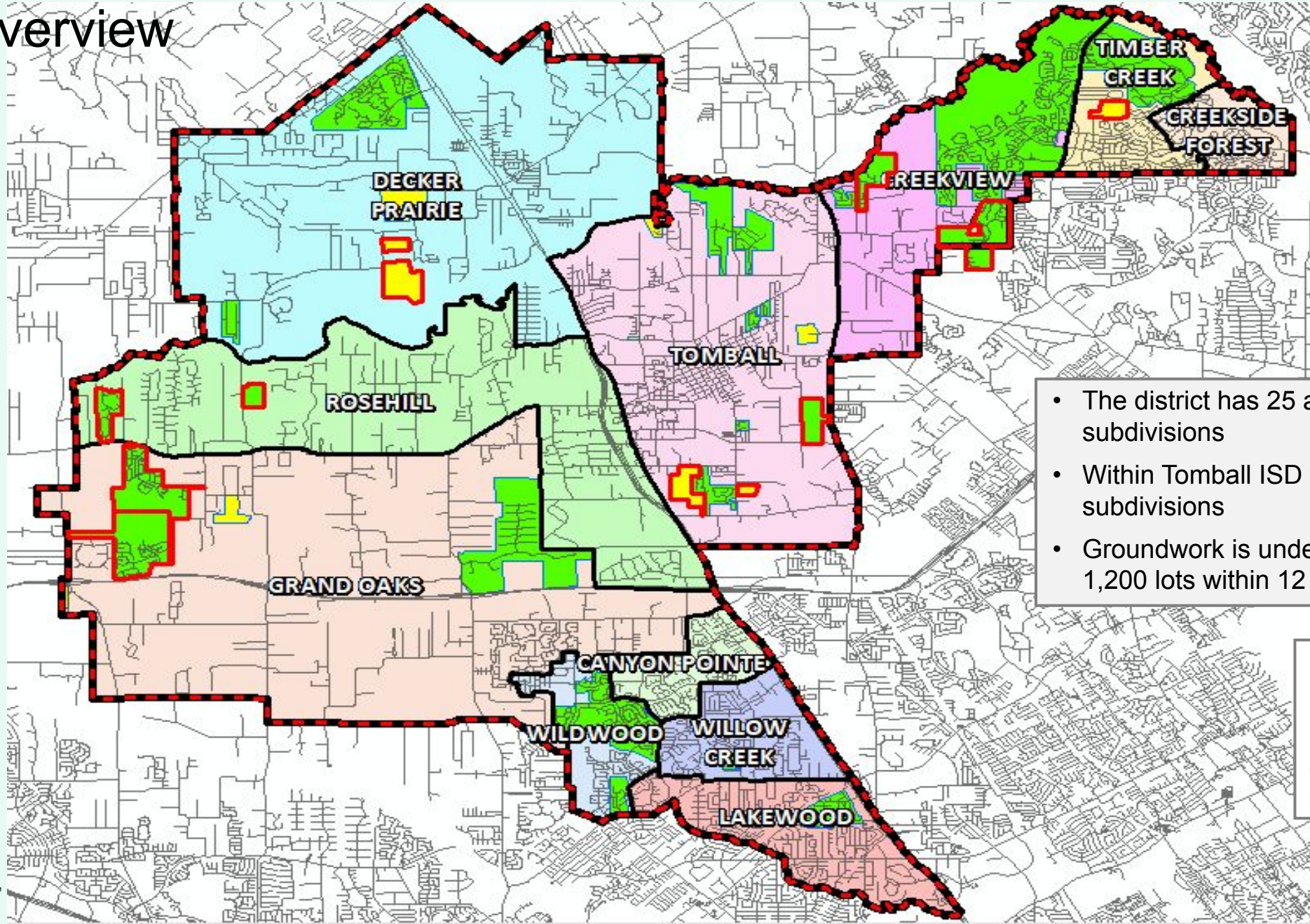
Five Year Forecast by Elementary Campus



Current Elementary Forecast Report						
SCHOOL	CAPACITY	2022/23	2023/24	2024/25	2025/26	2026/27
CREEKSIDE FOREST	714	569	570	541	523	505
CREEKVIEW	920	1,143	1,191	1,187	1,191	1,172
TIMBER CREEK	920	771	776	811	820	837
TOTAL	2,554	2,483	2,537	2,539	2,534	2,514



District Housing Overview



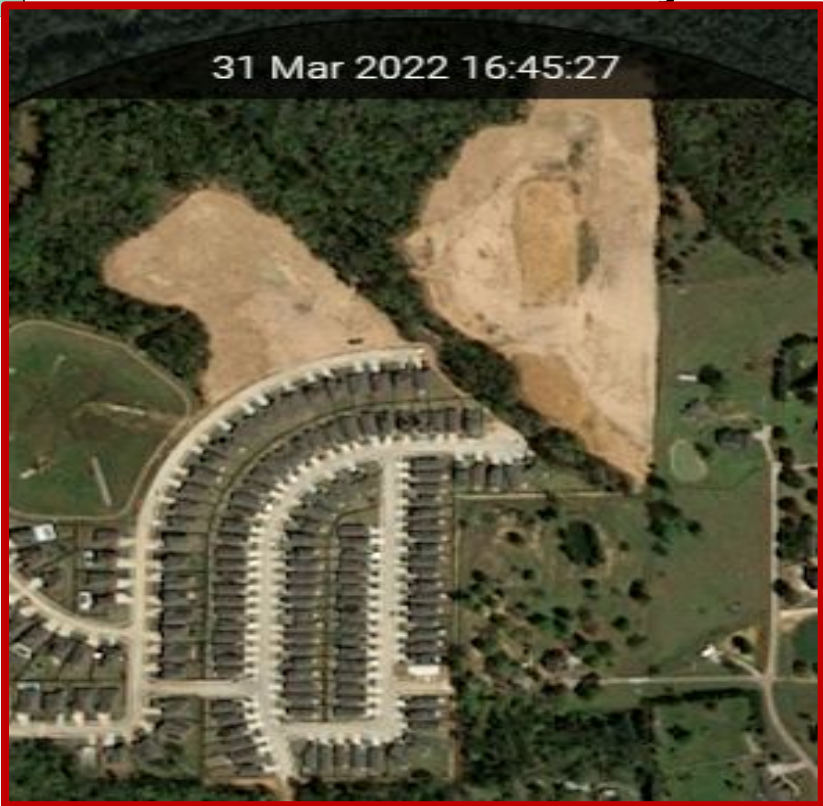
- The district has 25 actively building subdivisions
- Within Tomball ISD there are 13 future subdivisions
- Groundwork is underway on roughly 1,200 lots within 12 subdivisions

Subdivisions

- ACTIVE
- FUTURE
- Groundwork Underway



Residential Activity



Grove Landing

- Now built Out
- 78 homes under construction



Fairway Farms

- 311 total lots
- 77 future lots
- 156 occupied homes
- 78 homes under construction
- Currently 42 elementary students
- ~.27 Elementary Yield

TOMBALL ISD
CREEKVIEW



Residential Activity

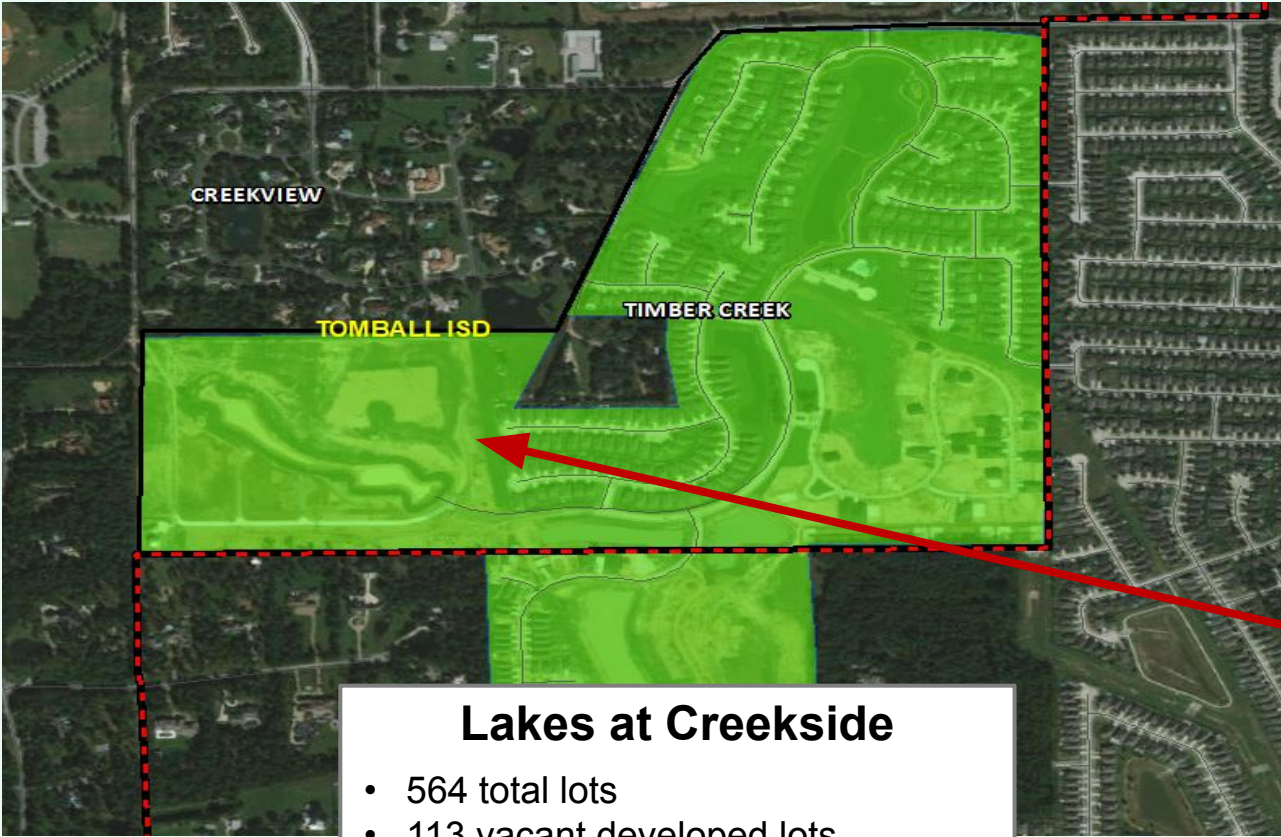
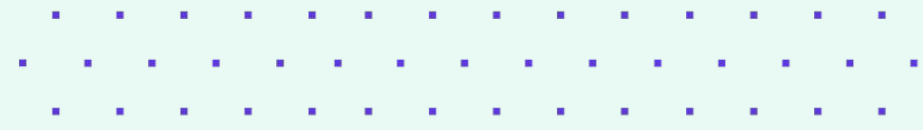


Enclave at the Woodlands

- 148 total lots
- 148 future lots
- Groundwork underway
- First Homes likely late 2022
- 3 Year Build Out expected
- Approximately 50 K-5 Students
- Expecting .25 Elementary Yield



Residential Activity

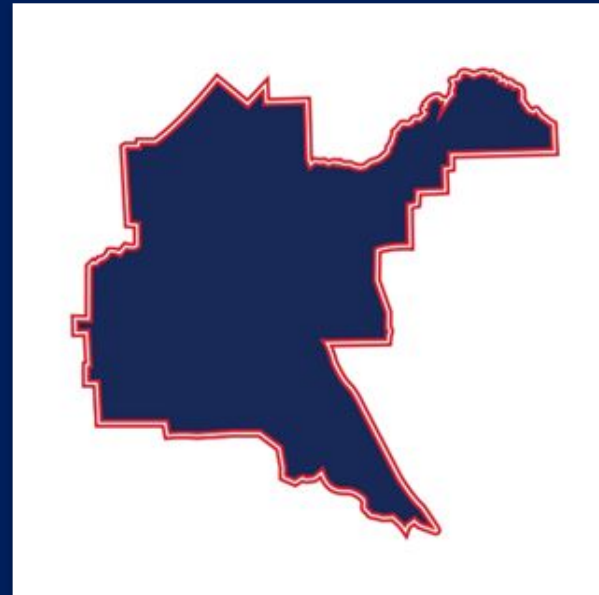


Lakes at Creekside

- 564 total lots
- 113 vacant developed lots
- 57 homes under construction
- 380 occupied homes
- ~.25 elementary yield (K-5)
- Currently 93 K-5 Students
- *Build-out K-5 - ~140-150 students*



Questions?



Enrollment Targets & Group Work

- Ideally, the goal is to have all campuses within their designated building capacity
- Work together in a group to create a plan that meets these target ranges
- Share your plans with Rocky for forecasted enrollment

	Capacity	Enrollment	Addition/Reduction
CES	920	1057	-140 to 200
CFES	714	556	+75 to 100
TCES	920	771	+100 to 140

THANK YOU!

thank you