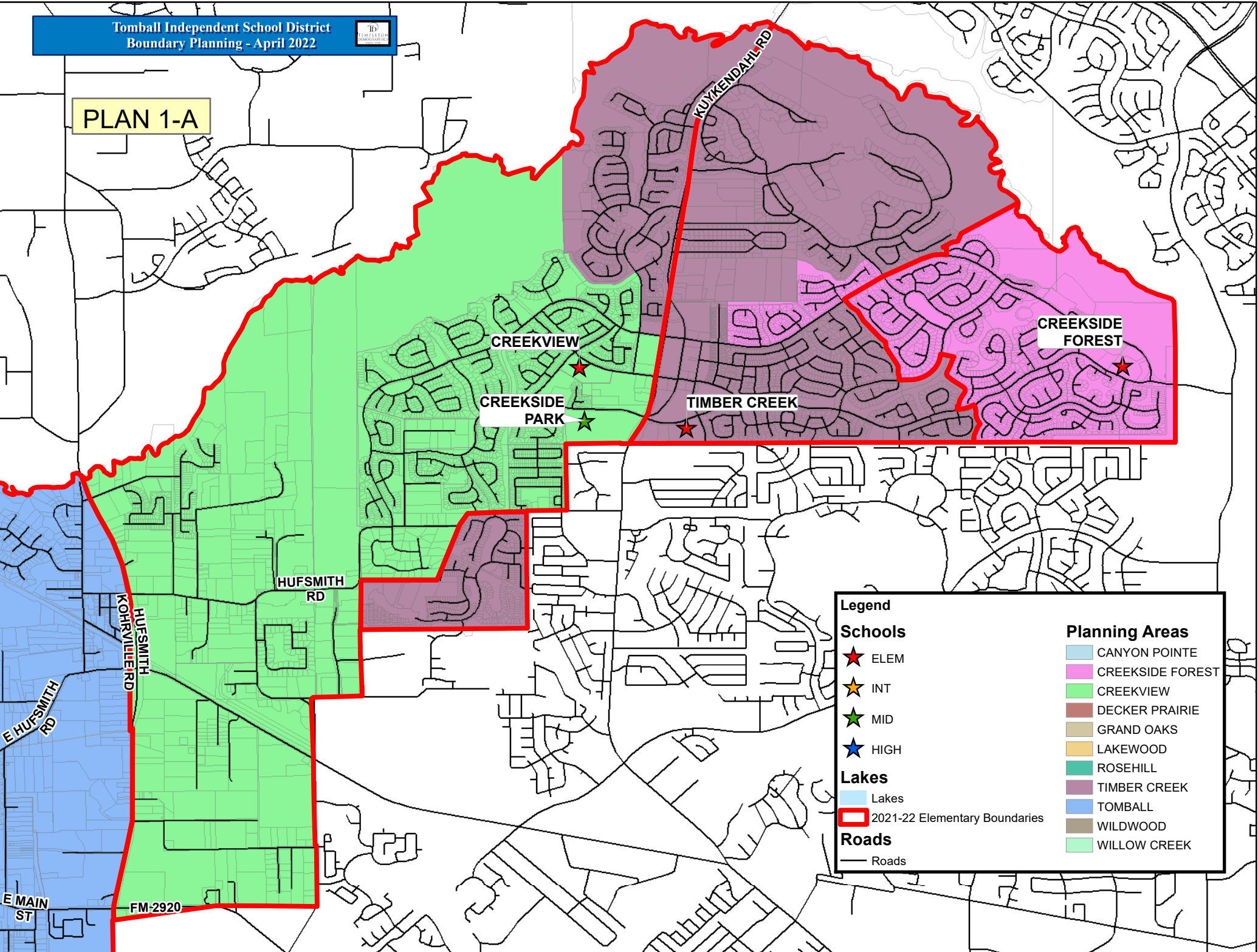




PLAN 1-A



Legend	
Schools	Planning Areas
★ ELEM	■ CANYON POINTE
★ INT	■ CREEKSIDE FOREST
★ MID	■ CREEKVIEW
★ HIGH	■ DECKER PRAIRIE
	■ GRAND OAKS
	■ LAKEWOOD
	■ ROSEHILL
	■ TIMBER CREEK
	■ TOMBALL
	■ WILDWOOD
	■ WILLOW CREEK
Lakes	
■ Lakes	
Roads	
— Roads	
2021-22 Elementary Boundaries	
■	

TOMBALL ISD

Plan 1-A Elementary Forecast Report

SCHOOL	CAPACITY	2022/23	2023/24	2024/25	2025/26	2026/27
CREEKSIDE FOREST	714	672	689	668	666	658
CREEKVIEW	920	928	947	948	947	942
TIMBER CREEK	920	893	894	931	944	960
TOTAL	2,554	2,493	2,530	2,547	2,557	2,560

YELLOW 95% - 100% CAPACITY
ORANGE 100% - 105% OVER CAPACITY
RED > 105% OVER CAPACITY