



**INTERIOR RENOVATION AT BELL ELEMENTARY**

11/10/22

**Addendum # 1**

This addendum is hereby a part of those documents and contracts, the same as if bound therein and it shall supersede anything contained in the original bid manual with which it might conflict.

- Please see attached documentation.

The end

11/10/22



**Bell Elementary School – Interior Remodel**

6304 E Admiral Blvd,  
Tulsa, OK 74115

420 S. 145th East Avenue, Suite K

Tulsa, Oklahoma 74108

Tel 918.712.1441

fax 918.712.2044

**Re: Bid Package #1**

## CM Addendum #1

This addendum forms a part of the Contract Documents and modifies the original Bidding Documents as noted below and attached. Acknowledge receipt of this Addendum in the space provided on attachment "A" located in Bid Package #1 documents. Failure to do so may subject the Bidder to disqualification.

**Revisions to Bid Package #1:**

- 1) It is the responsibility of all Trade Contractors to review all attached plans, specifications, notes, narratives, and clarifications information associated with Architectural Addendum #1 and include all applicable changes as it relates to your scope of work.
- 2) Please ensure to fill out the section at the bottom of the Bid Form to note receipt of CM Addenda in addition to Addenda issued by the architect.
- 3) **All Trade Contractors:** include 12+ hours or two shifts, and weekend work to complete project on time.
- 4) **Trade Contract 2A Demolition:** Line 9 of "Project Specific Inclusions" modified to read "Remove and haul off all kitchen equipment.
- 5) **Trade Contract 2A Demolition:** Line 17 of "Project Specific Inclusions" modified to read "Remove all window blinds as directed by the GC"
- 6) **Trade Contract 8A Door Assemblies – Supply & Install:** Delete Line 4 of project specific inclusions.
- 7) **Trade Contract 8A Door Assemblies – Supply & Install:** Modify Line 3 to state "Include new thresholds for FRP doors as needed."
- 8) **Trade Contract 8A Door Assemblies – Supply & Install:** All doors to include factory installed glazing.
- 9) **Trade Contract 8A Door Assemblies – Supply & Install:** Provide and install all doors, frames, and hardware as noted in the door schedule on sheet A7
- 10) **Trade Contract 9C Painting:** Remove item #3 under project specific inclusions.
- 11) **Trade Contract 9C Painting:** Trade Contractor to include prep and paint of all existing door frames shown to remain.
- 12) **Trade Contract 9C Painting:** Include prep and paint of existing walls in auditorium.
- 13) **Trade Contract 9C Painting:** Remove Alternate "Paint Auditorium & Ceiling"
- 14) **Trade Contract 10A Specialties:** See attached locker specification to be used.
- 15) **Trade Contract 10A Specialties:** Remove "Include Utility Shelves as Shown" from scope.
- 16) **Trade Contract 10B Signage:** Remove entire bid package
- 17) **Trade Contract 12A Window Treatments:** Numbering of "General Trade Inclusions" modified.
- 18) **Trade Contract 12A Window Treatments:** Include removal of all roller shades and components to be re-installed.

**Enclosures:**

- **Tulsa Public School Addendum #1 Narrative**
  - o Remove Sheets FS1.1 and FS401 and replace with new sheets FS101 and FS401 dated 10/31/22
  - o Remove Sheets D1.1, A1.1, and A7 and replace with new sheets dated 11/4/22
- **Tulsa Public School Addendum #1 Plans**
- **Locker Specification**
- **Substitution Request** – Acuity Lights
- **Substitution Request** – Saniflow Hand Dryers
- **Updated Bid Form**
- **Updated Drawing Enumerations Log “Attachment D”**

**End of CM Addendum #1**

# BID FORM

(Include Attachments: A, B, C, D, E & F, bid form and your bid bond in your sealed envelope)

**Company Name:** \_\_\_\_\_

**Estimator Name:** \_\_\_\_\_

**Estimator Phone:** \_\_\_\_\_

**Estimator E-Mail:** \_\_\_\_\_

## **Trade Contract 2A – Selective Building Demolition**

Base Bid (Excludes payment / performance bond)..... \$ \_\_\_\_\_

Payment / Performance Bond Rate (If base bid is over \$50,000) % \_\_\_\_\_ \$ \_\_\_\_\_

Total Bid (Add base bid and payment / performance bond amounts) ..... \$ \_\_\_\_\_

Alternate #1 – Demo Auditorium Ceilings ..... \$ \_\_\_\_\_

Alternate #2 – Demo Windows in Gymnasium and Multi Purpose Room ..... \$ \_\_\_\_\_

## **Trade Contract 8A - Door Assemblies – Supply & Install**

Base Bid (Excludes payment / performance bond)..... \$ \_\_\_\_\_

Payment / Performance Bond Rate (If base bid is over \$50,000) % \_\_\_\_\_ \$ \_\_\_\_\_

Total Bid (Add base bid and payment / performance bond amounts) ..... \$ \_\_\_\_\_

## **Trade Contract 9A – Gypsum Assemblies & Ceiling System**

Base Bid (Excludes payment / performance bond)..... \$ \_\_\_\_\_

Payment / Performance Bond Rate (If base bid is over \$50,000) % \_\_\_\_\_ \$ \_\_\_\_\_

Total Bid (Add base bid and payment / performance bond amounts) ..... \$ \_\_\_\_\_

Alternate #1 – Provide and install Auditorium Ceiling ..... \$ \_\_\_\_\_

### **Trade Contract 9B – Finish Flooring**

Base Bid (Excludes payment / performance bond)..... \$ \_\_\_\_\_

Payment / Performance Bond Rate (If base bid is over \$50,000) % \_\_\_\_\_ \$ \_\_\_\_\_

Total Bid (Add base bid and payment / performance bond amounts) ..... \$ \_\_\_\_\_

### **Trade Contract 9C – Painting**

Base Bid (Excludes payment / performance bond)..... \$ \_\_\_\_\_

Payment / Performance Bond Rate (If base bid is over \$50,000) % \_\_\_\_\_ \$ \_\_\_\_\_

Total Bid (Add base bid and payment / performance bond amounts) ..... \$ \_\_\_\_\_

### **Trade Contract 10A - Specialties**

Base Bid (Excludes payment / performance bond)..... \$ \_\_\_\_\_

Payment / Performance Bond Rate (If base bid is over \$50,000) % \_\_\_\_\_ \$ \_\_\_\_\_

Total Bid (Add base bid and payment / performance bond amounts) ..... \$ \_\_\_\_\_

### **Trade Contract 12A – Window Treatments**

Base Bid (Excludes payment / performance bond)..... \$ \_\_\_\_\_

Payment / Performance Bond Rate (If base bid is over \$50,000) % \_\_\_\_\_ \$ \_\_\_\_\_

Total Bid (Add base bid and payment / performance bond amounts) ..... \$ \_\_\_\_\_

### **Trade Contract 22A – Plumbing**

Base Bid (Excludes payment / performance bond)..... \$ \_\_\_\_\_

Payment / Performance Bond Rate (If base bid is over \$50,000) % \_\_\_\_\_ \$ \_\_\_\_\_

Total Bid (Add base bid and payment / performance bond amounts) ..... \$ \_\_\_\_\_

**Trade Contract 23A – HVAC**

Base Bid (Excludes payment / performance bond)..... \$ \_\_\_\_\_

Payment / Performance Bond Rate (If base bid is over \$50,000) % \_\_\_\_\_\$ \_\_\_\_\_

Total Bid (Add base bid and payment / performance bond amounts) .....\$ \_\_\_\_\_

**Trade Contract 26A – Electrical**

Base Bid (Excludes payment / performance bond)..... \$ \_\_\_\_\_

Payment / Performance Bond Rate (If base bid is over \$50,000) % \_\_\_\_\_\$ \_\_\_\_\_

Total Bid (Add base bid and payment / performance bond amounts) .....\$ \_\_\_\_\_

Alternate #1 – New Auditorium Lights ..... \$ \_\_\_\_\_

**Trade Contract – Plumbing & HVAC Combination Pricing**

List Trade Contracts in Combination Pricing..... \_\_\_\_\_

Base Bid (Excludes payment / performance bond)..... \$ \_\_\_\_\_

Payment / Performance Bond Rate (If base bid is over \$50,000) % \_\_\_\_\_\$ \_\_\_\_\_

Total Bid (Add base bid and payment / performance bond amounts) .....\$ \_\_\_\_\_

\*\*\*Note: Please be advised that for Combination Pricing to be considered, applicable individual Trade Contracts MUST be filled out as well. Failure to do so will deem the bidders Combination Pricing non-responsive. The intent of Combination Pricing is to capture discounts through the award of multiple packages\*\*\*

**\*\*The Following Attachments A, B, C, D, & E are to be included in your Sealed Bid Envelope\*\***

November 10, 2022

## **Addendum #001**

Project: Tulsa Public Schools – Bell Elementary School  
Tulsa, Oklahoma

Owner: Tulsa Public Schools  
From: Tulsa Public Schools  
To: Prospective Bidders

This addendum forms a part of the Contract Documents and modifies the original Bidding Documents dated 10/25/2022 as noted below. Acknowledge receipt of this Addendum in the space provided on the Bid Form. Failure to do so may subject the Bidder to disqualification. This Addendum consists of the below items including attachments.

### **Additions**

#### **Food Service**

1. Remove sheets FS1.1 and FS401 and replace with new sheets dated 10/31/2022.

#### **Alternate #3**

1. Remove all flooring, base, & adhesive in entire corridor east of gym and in rooms 106, 106A, Office 106A, 112, 113, 113A, 114, 115, 115A, 153, 154, 155, 155A, & 156.  
Prepare floors and install new adhesive, LVT flooring, and base in corridor east of gym and in rooms 106, 106A, Office 106A, 112, 113, 113A, 114, 115, 115A, 153, 154, 155, 155A, & 156.

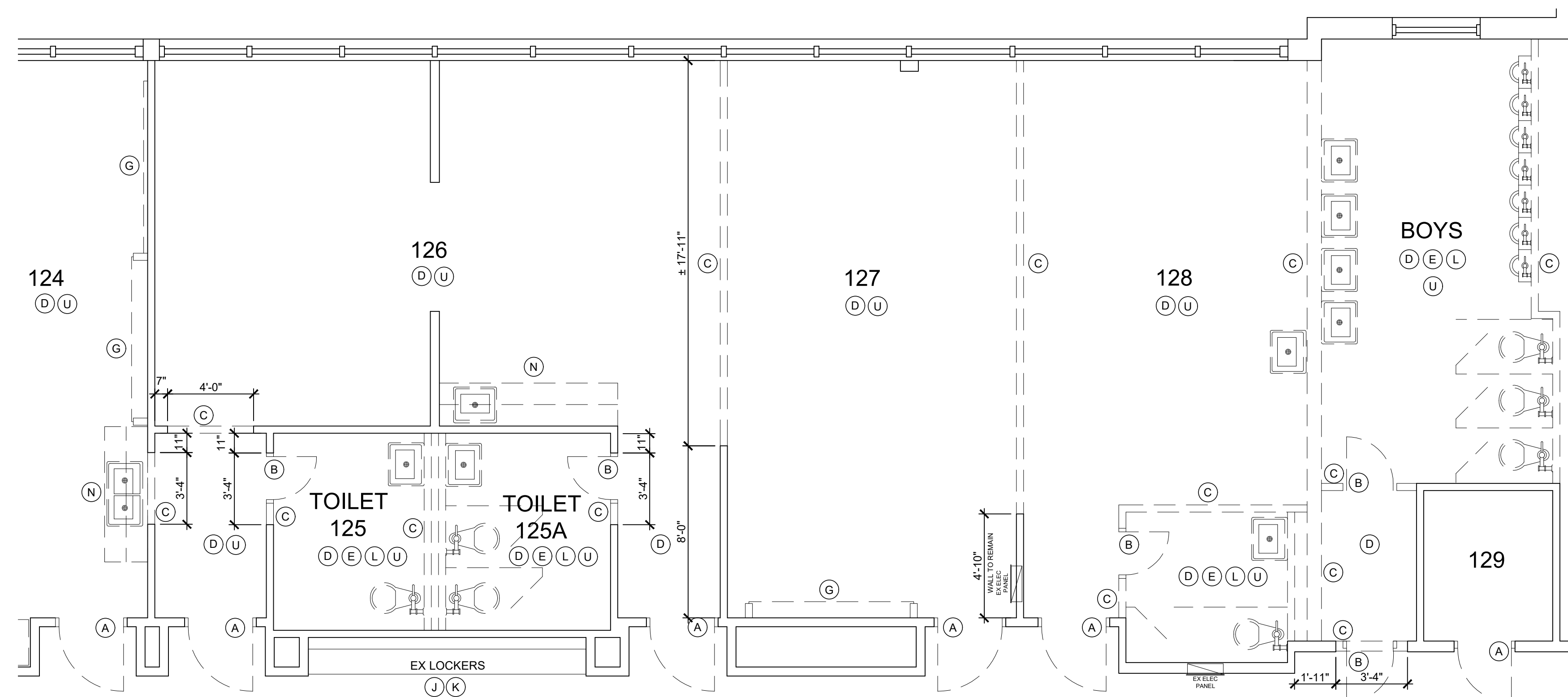
### **Clarifications**

#### **Architectural**

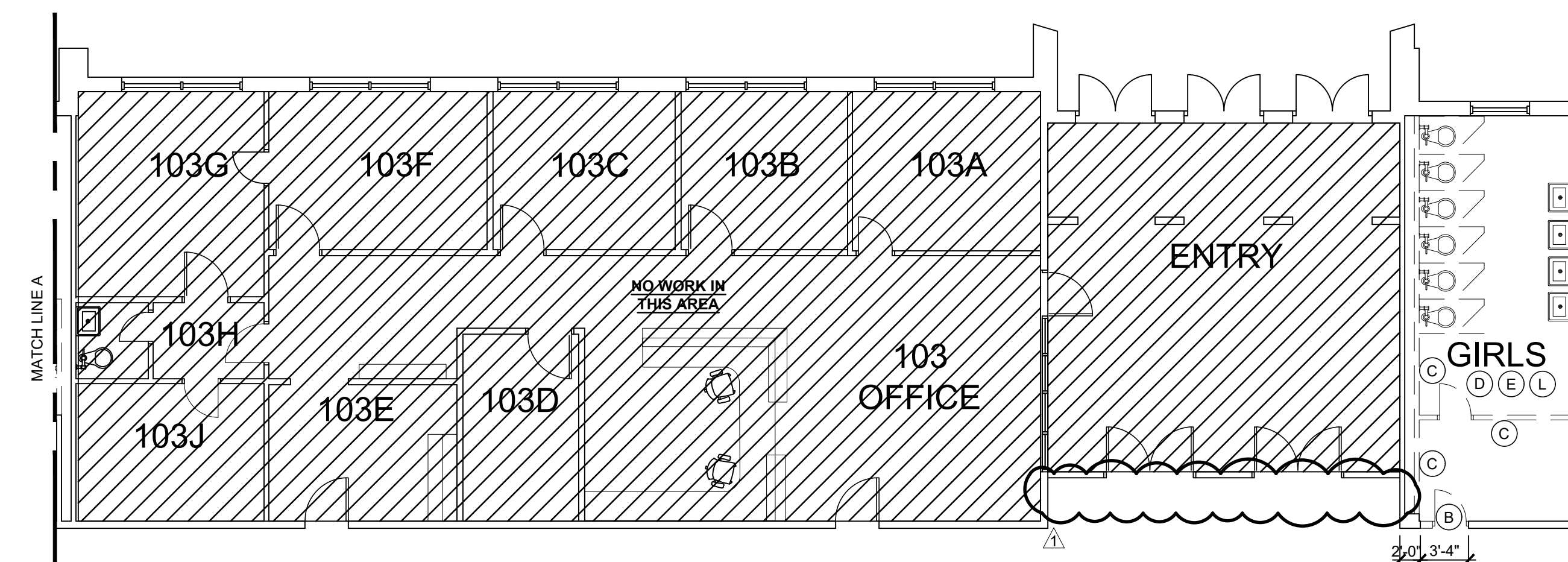
1. Sheet D1.1: Remove keynote B from corridor doors into entry vestibule. These doors are to remain.
2. Sheet A1.1: Lounge 124 – change elevation marker to 5/A5.
3. Sheet A1.1: Note on 2/A1.1 Interior Corridor Elevation should read “...glazed block...” not “...glass block wall...”
4. Sheet A1.1: Change door swing on Door 100A.
5. Sheet A1.3: Add Keynote 5 (New window shades) to windows in cafeteria.
6. Sheets A1.1-A1.4: Add wall type 1E at exterior windows in **ALL** classrooms & cafeteria.
7. Sheets A1.1-A1.4: Remove Floor Plan Note #25.
8. Sheet A7: Delete Door 100A from door schedule.
9. Sheet A7: Add Door AUD05 to door schedule.
10. 6'-0" corner guards are to be installed at ALL exposed gyp bd and wall protection corners.
11. Window shades are to be taken to ceiling height at windows on 2<sup>nd</sup> floor.
12. Prime and paint existing walls in auditorium.

### **End of Addendum #001**

Addendum #001



**2 ENLARGED DEMOLITION PLAN**  
SCALE: 1/8" = 1'-0"

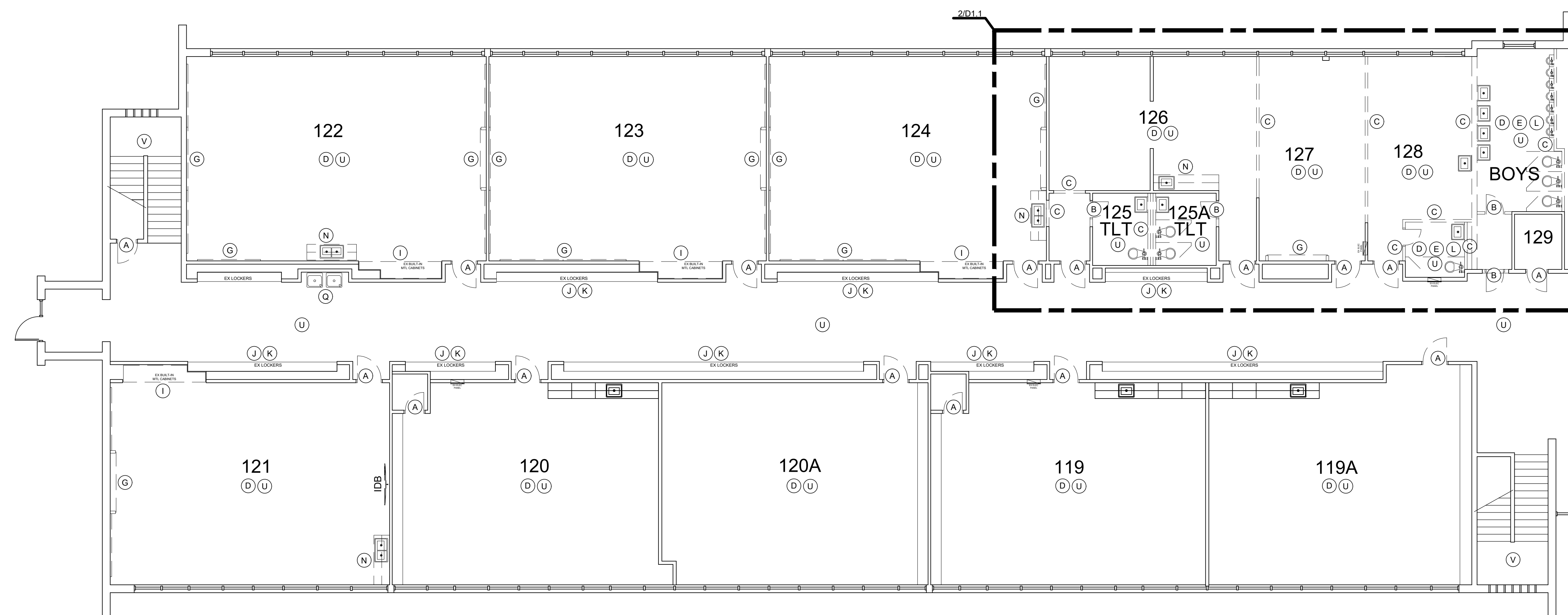


## DEMOLITION NOTES

1. REMOVE ALL TVS, MONITORS, PROJECTOR SCREENS, CLOCKS, & SPEAKERS AND ALL ASSOCIATED COMPONENTS FROM WALLS & CEILINGS.
2. REMOVE ALL ABANDONED CONDUIT FROM WALLS IN ALL REMODELED AREAS
3. REMOVE ALL MINI BLINDS FROM WINDOWS. WINDOW SHADES TO REMAIN.
4. REMOVE ALL MARKERBOARDS, CHALKBOARDS, TACKBOARDS, CHAIR RAILS AND/OR DISPLAY BOARDS.
5. REMOVE FLOOR COVERING, WALL BASE & FLOOR ADHESIVE IN ROOMS AS NOTED.
6. REMOVE MILLWORK AND SINKS INSTALLED IN MILLWORK IN ROOMS AS NOTED.
7. REMOVE ALL ABANDONED UN-VENTS THROUGHOUT SCHOOL.
8. ALL DOORS & FRAMES IN DEMOLISHED WALLS ARE TO BE DISPOSED OF, UNLESS NOTED OTHERWISE.
9. REMOVE ALL DAMAGED/STAINED EXISTING CEILING PANELS THROUGHOUT.
10. REMOVE TACK/MAP RAIL FROM WALLS ABOVE LOCKERS
11. CUT AND TIE BACK EXISTING CEILINGS TO REMAIN AS NEEDED FOR DEMOLITION.
12. INTERACTIVE BOARDS TO BE REMOVED AND STORED BY OWNER.
13. REFER TO PLUMBING DRAWINGS FOR EXTENT OF PLUMBING DEMOLITION.
14. REFER TO MECHANICAL DRAWINGS FOR EXTENT OF MECHANICAL DEMOLITION.
15. REFER TO ELECTRICAL DRAWINGS FOR EXTENT OF ELECTRICAL DEMOLITION.
16. ALL KITCHEN EQUIPMENT TO BE REMOVED AND DISPOSED OF, UNLESS NOTED TO BE SALVAGED FOR REINSTALLATION. REFER FOOD SERVICE DRAWINGS.

ALTERNATES:

1. REMOVE WINDOWS IN GYMNASIUM & MULTI-PURPOSE ROOM.
2. REMOVE CEILING & LIGHTS IN AUDITORIUM



# 1 ENLARGED DEMOLITION PLAN

SCALE: 1/8" = 1'-0"





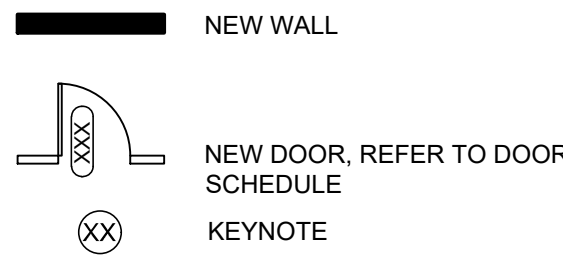
FLOOR PLAN NOTES:

- REPAIR ADJACENT WALLS TO REMAIN AS NECESSARY WHERE ALL DEMOLITION OCCURS. MATCH EXISTING CONDITIONS.
- PATCH AND REPAIR FLOOR AND WALL BASE AS NECESSARY WHERE ANY DEMOLITION OCCURS. FLOOR AND WALL BASE TO MATCH EXISTING.
- PATCH AND REPAIR DAMAGE TO WALL AND FLOOR WHERE RADIANT HEATERS/UNIVENTS HAVE BEEN REMOVED. PATCH EXTERIOR WALL WITH CMU INFILL. LEVEL FLOORS & COVER WITH SIMILAR FLOOR COVERING WHERE FLOORS ARE TO REMAIN. INSTALL NEW FLOOR COVERING AS SHOWN.
- REPAIR ALL WALLS, CEILINGS, AND FLOORS WHERE EXISTING MILLWORK AND/OR OTHER EXISTING ATTACHED ITEMS HAVE BEEN REMOVED AND/OR WHERE EXISTING WALLS, CEILINGS, & FLOORS ARE CRACKED OR DAMAGED.
- SKIM COAT & LEVEL ALL FLOORS PRIOR TO NEW FLOORING INSTALLATION.
- INSTALL RUBBER BASE IN ALL ROOMS TO RECEIVE VET. LVT OR CARPET
- ALL MULTI-STALL RESTROOMS TO HAVE VINYL FLOORS WITH 4" INTEGRAL BASE, UNLESS NOTED OTHERWISE
- PAINT ALL WALLS IN CORRIDORS, CLASSROOMS, RESTROOMS, & ALL OTHER REMODELED AREAS. ALL DOOR FRAMES TO BE PAINTED. ALL GYP BD CEILINGS TO BE PAINTED THROUGHOUT.
- SAND & PAINT/STAIN ALL STORED HANDRAILS. REINSTALL IN EXISTING LOCATION.
- NEW PLUMBING WALLS IN MULTIPLE STALL RESTROOMS TO BE WATER-RESISTANT GYP BD TO DECK WITH WALL TILE TO 6'-0" AFF & EPOXY PAINT ABOVE, RE: SHEET A6 FOR TILE PATTERN.
- ALL MULTIPLE STALL RESTROOM WALLS, WHETHER NEW OR EXISTING, TO RECEIVE WALL TILE TO 6'-0" AFF WITH EPOXY PAINT ABOVE, RE: SHEET A6 FOR TILE PATTERN. PREPARE AND/OR FLOAT EXISTING WALLS AS NECESSARY TO RECEIVE NEW TILE.
- NEW ACCESSORIES TO BE INSTALLED IN ALL RESTROOMS AS NOTED.
- SAND & PAINT ALL EXISTING MILLWORK, METAL CABINETS & DISPLAY CABINETS TO REMAIN.
- ALL EXISTING PLASTER WALLS TO BE SKIM COATED, LAMINATED, OR FURRED-OUT WITH GYP. BD. TO A SMOOTH FINISH & PAINTED.
- ALL BRICK WALLS TO BE PAINTED. INFILL ALL HOLES PRIOR TO PAINTING WALLS.
- INSTALL ROLLER SHADES AT ALL WINDOWS AS INDICATED ON PLANS.
- ALL WALLS IN CAFETERIA, AUDITORIUM & GYMNASIUM TO BE PAINTED.
- CEILINGS & GRILLES IN BOTH GYMNASIUMS TO BE PAINTED
- ALL EXISTING FRAMES TO REMAIN TO HAVE HOLES PATCHED/BONDED AND BE PREPARED FOR NEW DOORS, PAINT
- NEW PAINT, FLOORING, & CEILING IN CUSTODIAL OFFICE.
- 4'-0" HIGH WALL PROTECTION TO BE INSTALLED ON ALL GYP BD WALLS IN CLINIC AND CORRIDORS.
- 6'-0" HIGH CORNER GUARDS TO BE INSTALLED AT ALL EXPOSED GYP BOARD CORNERS, WHETHER SHOWN @ ALL LOCATIONS ON DRAWINGS OR NOT. STAINLESS CORNER GUARDS TO BE INSTALLED AT RESTROOM CASIED OPENINGS.
- INSTALL SOLID PLYWOOD SHEETS BACKING FOR ALL UPPER CABINETS AND INTERACTIVE BOARDS.
- REFER TO MEP DRAWINGS FOR EXTENT OF PLUMBING, ELECTRICAL, & MECHANICAL WORK
- REFER TO FOOD SERVICE DRAWINGS FOR EXTENT OF KITCHEN EQUIPMENT & RELATED WORK.

ALTERNATES:

- REPLACE WINDOWS IN GYMNASIUM & MULTI-PURPOSE ROOM.
- NEW CEILING IN AUDITORIUM.

FLOOR PLAN LEGEND

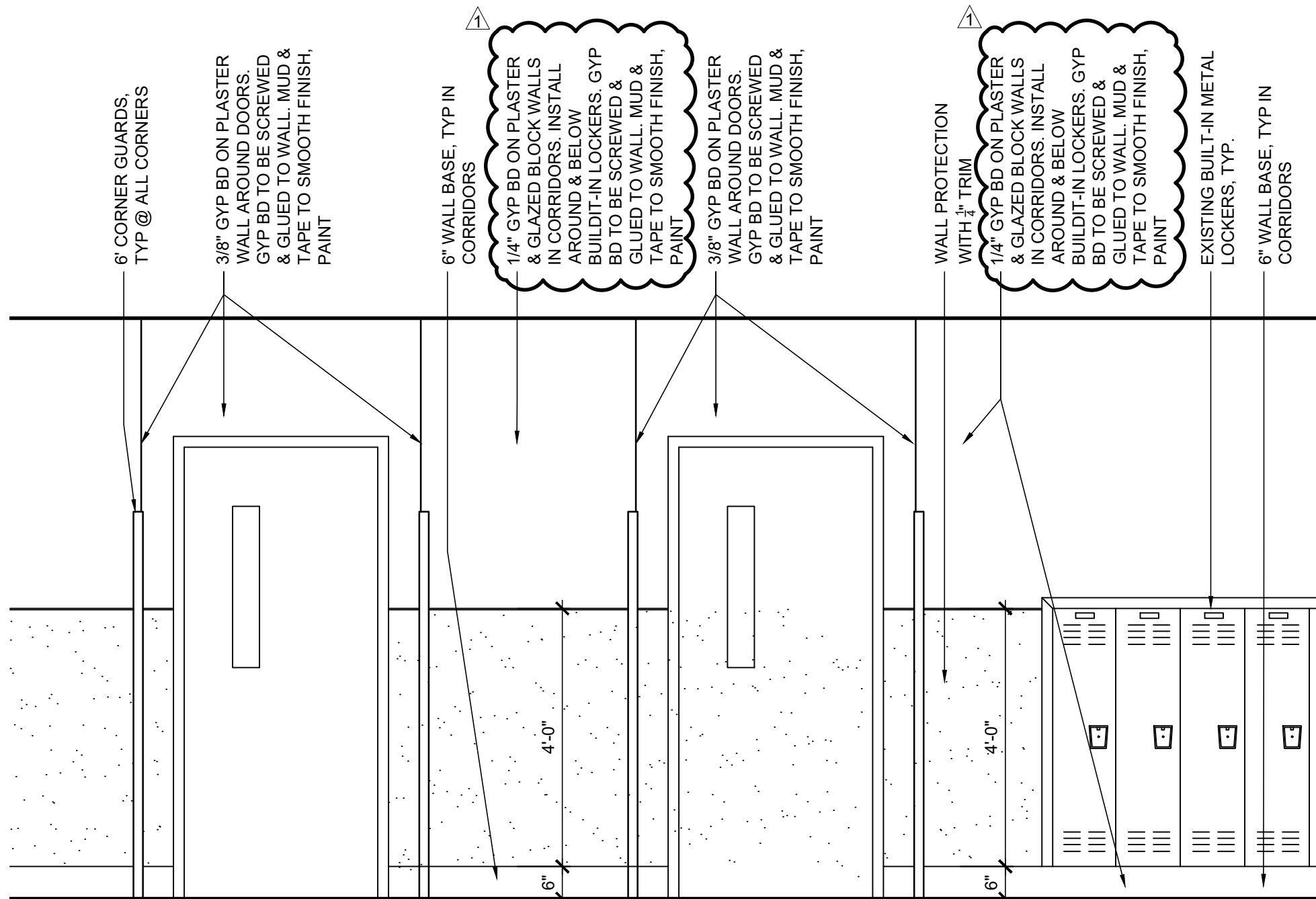


FLOOR PLAN KEYNOTES

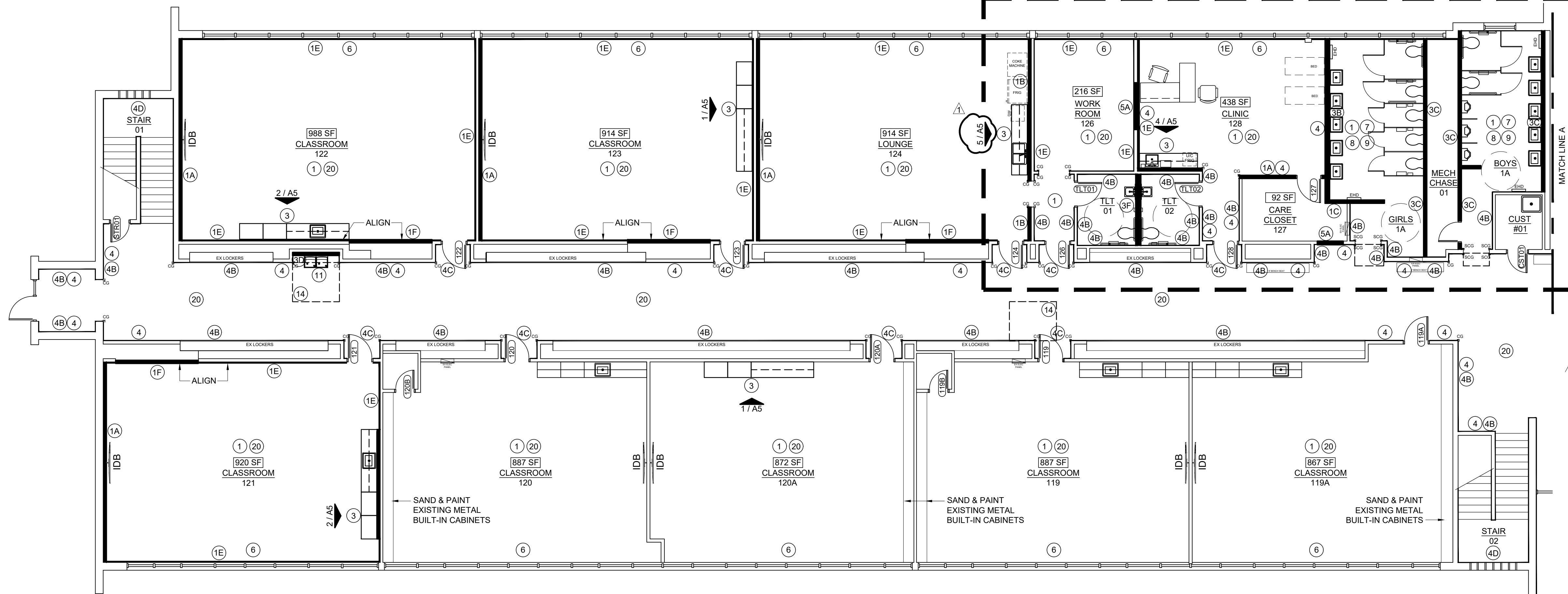
- LVT/VINYL FLOORING
- CARPET
- NEW MILLWORK UNIT
- WALL PROTECTION
- NEW WINDOW SHADES
- NEW GYP BD WINDOW SILLS
- NEW TOILET PARTITIONS
- NEW TOILET ACCESSORIES
- NEW PLUMBING FIXTURES, RE: PLUMBING
- NEW HANDWASHING STATION
- NEW ADA DRINKING FOUNTAINS, ONE WITH ELECTRIC BOTTLE FILLER AT LOCATIONS WITH MULTIPLE DRINKING FOUNTAINS. RE: PLUMBING
- BENCH SEATS: 1'-0" DEEP LAMINATED HARDWOOD BENCH TOP ON POWDER COATED STEEL PEDESTALS MANUFACTURED BY LYON (OR APPROVED EQUAL)
- FIRE EXTINGUISHER CABINET
- 4'-0" x 5'-0" x 1'-0" GYP BD SOFFIT ON METAL STUDS FRAME
- UTILITY SHELVES
- FRP PANELS - MARLITE SYMMETRIX SMART SEAM
- SLIP RESISTANT SAFETY FLOOR
- REINSTALL STORED CUBBIES
- REINSTALL STORED FIXTURES
- NEW CEILING GRID & PANELS

WALL TYPES

- 1/2" GYP BD ON 3 1/2" METAL STUDS @ 16" O.C. TO DECK WITH SOUND BATT INSULATION, PAINT.
- 1/2" GYP BD ON 6" METAL STUDS @ 16" O.C. TO DECK WITH SOUND BATT INSULATION, PAINT
- 1/2" GYP BD ON 3 1/2" METAL STUDS @ 16" O.C. TO DECK, PAINT
- 1/2" GYP BD ON 6" METAL STUDS @ 16" O.C. TO DECK, PAINT
- 1/2" GYP BD ON 2 1/2" METAL STUDS @ 16" O.C. TO 6" ABOVE CEILING, PAINT
- 1/2" GYP BD ON 3 1/2" METAL STUDS @ 16" O.C. TO 6" ABOVE CEILING, PAINT.
- 1-HR RATED 1/2" GYP BD ON 3 1/2" METAL STUDS @ 16" O.C. TO DECK WITH SOUND BATT INSULATION, PAINT.
- 1/2" WATER-RESISTANT GYP BD ON 3 1/2" METAL STUDS @ 16" O.C. TO 6" ABOVE ADJACENT CEILING, PAINT
- WATER RESISTANT GYP BD ON 6" METAL STUDS @ 16" O.C. TO DECK WITH WALL TILE TO 6'-0" AFF & EPOXY PAINT ABOVE
- WATER RESISTANT GYP BD ON 3 1/2" METAL STUDS @ 16" O.C. TO DECK WITH WALL TILE TO 6'-0" AFF & EPOXY PAINT ABOVE
- WATER RESISTANT GYP BD ON 3 1/2" METAL STUDS @ 16" O.C. TO 6" ABOVE CEILING WITH WALL TILE TO 6'-0" AFF & EPOXY PAINT ABOVE
- WATER RESISTANT GYP BD ON 6" METAL STUDS @ 16" O.C. TO 6" ABOVE CEILING.
- WATER RESISTANT GYP BD ON BOTH SIDES OF 8" METAL STUDS @ 16" O.C. TO DECK WITH WALL TILE TO 6'-0" AFF & EPOXY PAINT ABOVE
- WATER RESISTANT GYP BD ON BOTH SIDES OF 8" METAL STUDS @ 16" O.C. TO DECK. ADD STAINLESS STEEL SHEATHING BEHIND APPLIANCES UNDERNEATH HOOD
- 1/2" GYP BD ON FURRING CHANNELS @ 16" O.C. TO 6" ABOVE CEILING GRID, PAINT
- 1/2" GYP BD LAMINATE ON EXISTING WALLS, PAINT.
- 3/4" GYP BD LAMINATE ON WALLS @ DOOR SURROUNDS IN CORRIDORS, TYP., PAINT. SEE 2/A1.1
- SKIM COAT WALLS, PAINT
- INFILL OPENING WITH METAL STUDS & GYP BOARD



2 INTERIOR CORRIDOR ELEVATION  
SCALE: 1/2" = 1'-0" TYPICAL AT SIMILAR CONDITIONS



1 ENLARGED FLOOR PLAN  
SCALE: 1/8" = 1'-0"



ENGINEER SEAL

TULSA PUBLIC SCHOOLS  
BELL ELEMENTARY SCHOOL  
6304 E ADMIRAL BLVD  
TULSA, OK 74115

SEAL



PROJECT TITLE  
BELL  
ELEMENTARY  
INTERIOR  
RENOVATION

REVISION  
1 ADDENDUM #01 11/10/2022

SHEET TITLE  
ENLARGED  
FLOOR PLAN

DATE: 10/25/2022  
SHEET NO.

A1.1



DOOR SCHEDULE

MARK <div>XXX</div>	DOOR						FRAME				FIRE RATING (IN MINUTES)	REMARKS				
	TYPE	WOOD	HOLLOW METAL	ALUMINUM	FRP	OTHER	WIDTH	HEIGHT	THICKNESS	TYPE			WOOD	HOLLOW METAL	ALUMINUM	EXISTING
100	B	●					3'-0"	7'-0"	1 3/4"					●	20	
100A	B	●					3'-0"	7'-0"	1 3/4"					●	20	
101	B	●					3'-0"	7'-0"	1 3/4"					●	20	
106	B	●					3'-0"	7'-0"	1 3/4"					●	20	
106A	B	●					3'-0"	7'-0"	1 3/4"					●	20	
107A	B	●					3'-0"	7'-0"	1 3/4"					●	20	
107B	B	●					3'-0"	7'-0"	1 3/4"					●	20	
107C	A	●					2'-8"	7'-0"	1 3/4"					●		
109	A	●					2'-8"	7'-0"	1 3/4"					●	20	
112	B	●					3'-0"	7'-0"	1 3/4"					●	20	
113	B	●					3'-0"	7'-0"	1 3/4"					●	20	
114A	B	●					3'-6"	7'-0"	1 3/4"					●	20	
114B	B	●					3'-0"	7'-0"	1 3/4"					●	20	
115	B	●					3'-0"	7'-0"	1 3/4"					●	20	
116	B	●					3'-0"	7'-0"	1 3/4"					●	20	
116A	A	●					3'-0"	7'-0"	1 3/4"					●		
116B	A	●					3'-0"	7'-0"	1 3/4"					●		
117	B	●					3'-0"	7'-0"	1 3/4"					●	20	
119	B	●					3'-0"	7'-0"	1 3/4"					●	20	
119A	B	●					3'-0"	7'-0"	1 3/4"					●	20	
119B	A	●					2'-8"	7'-0"	1 3/4"					●		
120	B	●					3'-0"	7'-0"	1 3/4"					●	20	
120A	B	●					3'-0"	7'-0"	1 3/4"					●	20	
120B	A	●					2'-8"	7'-0"	1 3/4"					●	20	
121	B	●					3'-0"	7'-0"	1 3/4"					●	20	
122	B	●					3'-0"	7'-0"	1 3/4"					●	20	
123	B	●					3'-0"	7'-0"	1 3/4"					●	20	
124	B	●					3'-0"	7'-0"	1 3/4"					●	20	
126	B	●					3'-0"	7'-0"	1 3/4"					●	20	
127	A	●					3'-0"	7'-0"	1 3/4"		●					
128	B	●					3'-0"	7'-0"	1 3/4"					●	20	
153A	B	●					3'-0"	7'-0"	1 3/4"					●	20	NEW HARDWARE ONLY
153B	B	●					3'-0"	7'-0"	1 3/4"					●	20	NEW HARDWARE ONLY
154	B	●					3'-0"	7'-0"	1 3/4"					●	20	NEW HARDWARE ONLY
155A	B	●					3'-0"	7'-0"	1 3/4"					●	20	NEW HARDWARE ONLY
155B	B	●					3'-0"	7'-0"	1 3/4"					●	20	NEW HARDWARE ONLY
156	B	●					3'-0"	7'-0"	1 3/4"					●	20	NEW HARDWARE ONLY
MECHANICAL CHASES																
MECH01	A	●					3'-0"	7'-0"	1 3/4"		●					PAINT HM DOOR
MECH02	A	●					3'-0"	7'-0"	1 3/4"		●					PAINT HM DOOR
GYMNASIUM																
GYM01	C	●					3'-0"	7'-0"	1 3/4"					●	20	
GYM02	C	●					3'-0"	7'-0"	1 3/4"					●	20	
GYM03	A	●					3'-0"	7'-0"	1 3/4"					●		
GYM04	B	●					3'-0"	7'-0"	1 3/4"					●		
TOILETS																
TLT01	A	●					3'-0"	7'-0"	1 3/4"	B	●					
TLT02	A	●					3'-0"	7'-0"	1 3/4"	B	●					
TLT04	A	●					3'-0"	7'-0"	1 3/4"	B	●				20	
TLT05	A	●					3'-0"	7'-0"	1 3/4"	B	●				20	
TLT06	A	●					3'-0"	7'-0"	1 3/4"	B	●				20	
CAFETERIA																
CAF01	C	●					PR 2'-6"	7'-0"	1 3/4"					●	20	
CAF02	C	●					3'-0"	7'-0"	1 3/4"		●				20	
CAF03	B	●					3'-0"	7'-0"	1 3/4"					●		
CAF04	B	●					3'-0"	7'-0"	1 3/4"					●		
KIT																
KIT01	B	●					3'-0"	7'-0"	1 3/4"					●		
KIT02	A	●					3'-0"	7'-0"	1 3/4"					●		
KIT03	A	●					3'-0"	7'-0"	1 3/4"					●		
CUSTODIAN CLOSETS																
CST01	A	●					3'-0"	7'-0"	1 3/4"					●	20	
CST02	A	●					3'-0"	7'-0"	1 3/4"					●	20	
STAIRS																
STR01	A	●					3'-0"	7'-0"	1 3/4"					●	20	
AUDITORIUM																
AUD01	B	●					PR 2'-6"	7'-0"	1 3/4"					●	20	
AUD02	B	●					PR 2'-6"	7'-0"	1 3/4"					●	20	
AUD03	B	●					PR 2'-6"	7'-0"	1 3/4"					●	20	
AUD04	B	●					PR 2'-6"	7'-0"	1 3/4"					●	20	
AUD05	A	●					3'-0"	7'-0"	1 3/4"					●	20	

DOOR SCHEDULE

MARK CXXX	DOOR									FRAME				FIRE RATING (IN MINUTES)	REMARKS	
	TYPE	WOOD	HOLLOW METAL	ALUMINUM	FRP	OTHER	WIDTH	HEIGHT	THICKNESS	TYPE	WOOD	HOLLOW METAL	ALUMINUM			EXISTING
201	B	●					3'-0"	7'-0"	1 3/4"			●			20	
202	B	●					3'-0"	7'-0"	1 3/4"					●	20	
203	B	●					3'-0"	7'-0"	1 3/4"					●	20	
204	B	●					3'-0"	7'-0"	1 3/4"					●	20	
205	A	●					3'-0"	7'-0"	1 3/4"					●	20	
206	B	●					3'-0"	7'-0"	1 3/4"					●	20	
207	B	●					3'-0"	7'-0"	1 3/4"					●	20	
208	B	●					3'-0"	7'-0"	1 3/4"					●	20	
206	B	●					3'-0"	7'-0"	1 3/4"					●	20	
207	B	●					3'-0"	7'-0"	1 3/4"					●	20	
208	B	●					3'-0"	7'-0"	1 3/4"					●	20	
209	A	●					3'-0"	7'-0"	1 3/4"					●	20	
210A	A	●					3'-0"	7'-0"	1 3/4"					●	20	
210B	A	●					3'-0"	7'-0"	1 3/4"					●	20	
212	A	●					3'-0"	7'-0"	1 3/4"					●	20	
212A	B	●					3'-0"	7'-0"	1 3/4"					●	20	
212B	B	●					3'-0"	7'-0"	1 3/4"					●	20	
213A	B	●					3'-0"	7'-0"	1 3/4"					●	20	
213B	B	●					3'-0"	7'-0"	1 3/4"					●	20	
213C	B	●					3'-0"	7'-0"	1 3/4"					●		
214A	B	●					3'-0"	7'-0"	1 3/4"					●	20	
214B	B	●					3'-0"	7'-0"	1 3/4"					●	20	
214C	B	●					3'-0"	7'-0"	1 3/4"					●		
215	B	●					3'-0"	7'-0"	1 3/4"					●	20	
216	B	●					3'-0"	7'-0"	1 3/4"					●	20	
217	B	●					3'-0"	7'-0"	1 3/4"					●	20	
218	B	●					3'-0"	7'-0"	1 3/4"					●	20	
219A	B	●					3'-0"	7'-0"	1 3/4"					●	20	
219B	B	●					3'-0"	7'-0"	1 3/4"					●	20	

GLAZING & FRAMING NOTES:

GLAZING TYPES:

- TYPE I    TEMPERED GLASS, CLASS 1 CLEAR, Q3 (GLAZING SELECT), 1/4" THICK  
TYPE II    SENTRY GUARD HARDENED GLASS (TWO LAYERS)

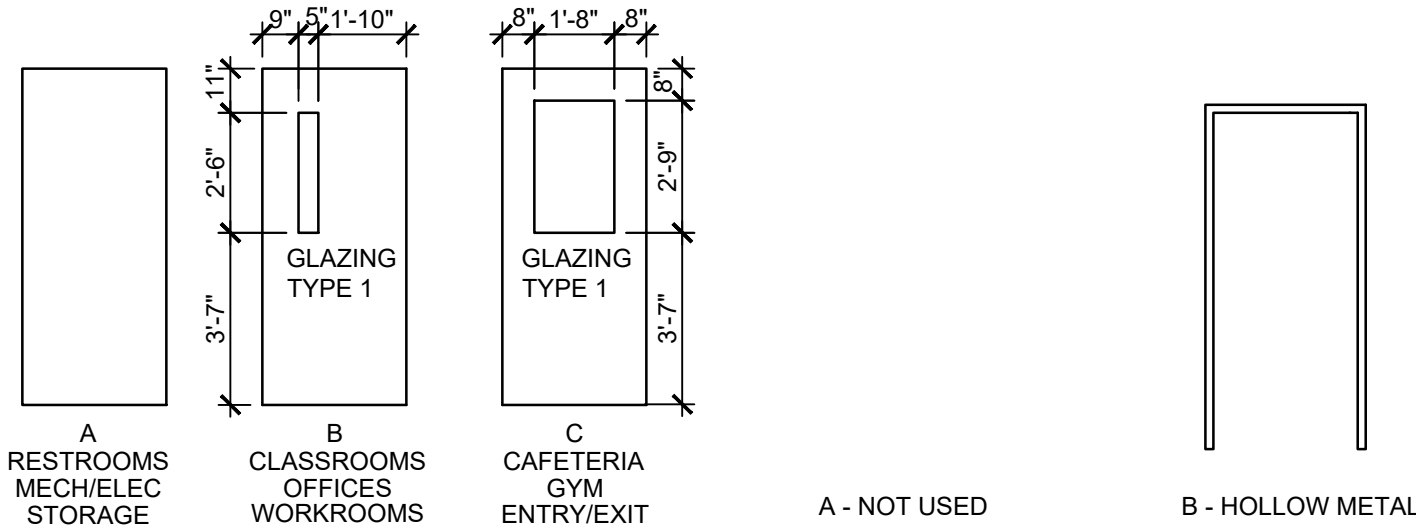
NOTES:

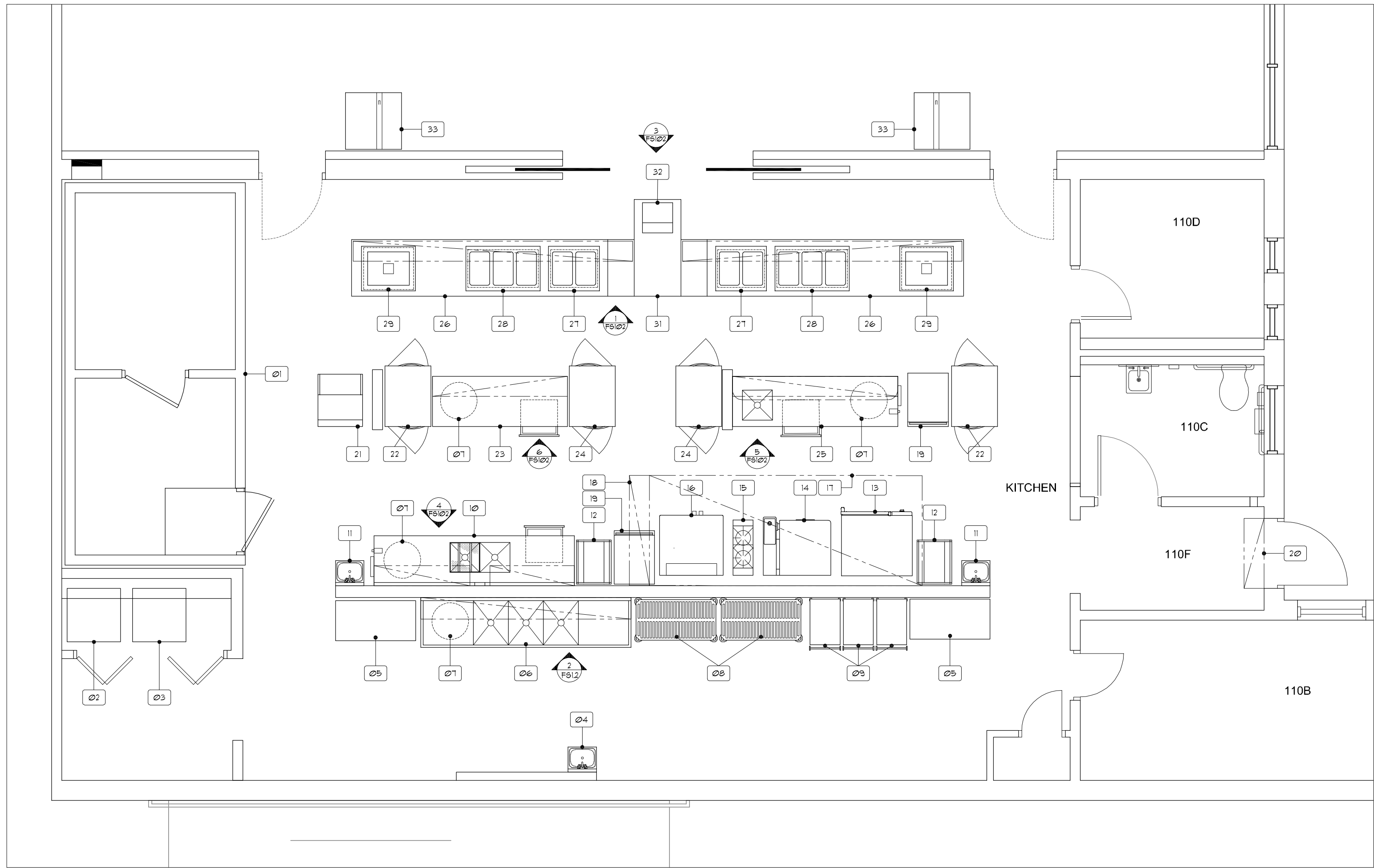
- SOLID CORE WOOD DOOR WITH 2 LAYERS SENTRY GUARD GLASS IN LITE. DOOR FRAME TO BE 14 GA METAL FRAMES WITH 4 ANCHOR POINTS.
- HOLLOW METAL FRAME DEPTHS ARE APPROXIMATE AND MAY VARY FROM MANUFACTURER TO MANUFACTURER. CONTRACTOR SHALL VERIFY EXACT REQUIRED DEPTH OF EACH FRAME PRIOR TO FABRICATION.

EXISTING DOOR FRAME AND DOOR SIZES ARE APPROXIMATE. CONTRACTOR SHALL VERIFY EXACT SIZE PRIOR TO FABRICATION.

DOOR HARDWARE NOTES:

- ALL DOORS TO HAVE ACCESSIBLE HARDWARE WITH FREE EGRESS IN THE DIRECTION OF EGRESS REQUIRING ONLY ONE OPERATION.





# 1 FOODSERVICE EQUIPMENT ARRANGEMENT PLAN

1/4" = 1'-0"

## FOODSERVICE EQUIPMENT SCHEDULE

NO.	DESCRIPTION
01	WALK-IN COOLER, FREEZER - EXISTING
02	WASHER BY THE OWNER
03	DRYER BY THE OWNER
04	HAND SINK - EXISTING
05	MOBILE PAN RACK
06	POT SINK
07	TRASH CAN
08	MOBILE DRYING RACKS
09	MOBILE UTILITY CARTS
10	PREP TABLE
11	HAND SINK
12	MOBILE COOLING RACKS
13	MOBILE COMBI-OVEN
14	IVARIO PRO L
15	MOBILE RANGE
16	MOBILE CONVECTION OVEN
17	VENTILATOR BY THE MECHANICAL CONTRACTOR
18	FIRE SUPPRESSION SYSTEM BY THE MECHANICAL CONTRACTOR
19	MOBILE PROOF/HOT CABINET
20	NUMBER NOT USED
21	ICE MAKER
22	MOBILE PASS-THRU REFRIGERATOR
23	WORK TABLE
24	MOBILE PASS-THRU HOT CABINET
25	COOK'S TABLE
26	MOBILE SERVING LINE
27	DROP-IN HOT FOOD WELLS
28	DROP-IN HOT FOOD WELLS
29	DROP-IN COLD FOOD WELLS
30	NUMBER NOT USED
31	MOBILE CASHIER COUNTER
32	POS BY THE OWNER
33	MOBILE MILK COOLER

PROVIDE A 12 GAUGE STAINLESS STEEL ANGLE BRACKET FULLY WELDED TO AN A STAINLESS STEEL ADJUSTABLE SLEEVE. ATTACH THE BRACKET TO THE WALL WITH A STAINLESS STEEL SCREW.

CONSTRUCT THE RAIL SHELF FROM 1" DIAMETER FULLY WELDED STAINLESS STEEL TUBES. FULLY WELD THE TUBES TO STAINLESS STEEL ADJUSTABLE SLEEVES.

CONSTRUCT THE RACK SHELF FROM FULLY WELDED 14 GAUGE STAINLESS STEEL. ATTACH THE SHELF TO THE BRACKETS WITH WELD STUDS AND STAINLESS STEEL ACORN NUTS.

PROVIDE A 12 GAUGE STAINLESS STEEL SHELF BRACKETS. FULLY WELD THE BRACKETS TO STAINLESS STEEL ADJUSTABLE SLEEVES.

PROVIDE 1 5/8" DIAMETER STAINLESS STEEL UPRIGHTS.

## 2 SECTION - SOILED DISHTABLE RACK & RAIL SHELVES

NO SCALE

SNEEZE GUARD PER THE DRAWINGS AND SPECIFICATIONS, ATTACH THE SNEEZE GUARD TO THE COUNTER PER THE MANUFACTURER'S REQUIREMENTS.

PROVIDE A FULLY WELDED 14 GAUGE STAINLESS STEEL COUNTER TOP. PROVIDE A 2" TURN DOWN WITH A TIGHT HEM AT ALL THE EXPOSED SIDES.

HOT FOOD WELLS PER THE SPECIFICATIONS. MOUNT THE UNITS WITH STAINLESS STEEL FASTENERS PER THE MANUFACTURER'S REQUIREMENTS.

PROVIDE A FULLY WELDED 1 1/2" X 1 1/2" X 1/8" ANGLE FRAME.

PROVIDE A STAINLESS STEEL REMOVABLE ACCESS PANEL AT THE HOT FOOD WELLS. ATTACH THE PANELS WITH STAINLESS STEEL SCREWS.

PROVIDE 18 GAUGE FULLY WELDED STAINLESS STEEL REMOVABLE PANELS PER THE SPECIFICATIONS. ATTACH THE PANELS WITH 14 GAUGE STAINLESS STEEL Z-CLIPS AT THE PANEL EDGES.

PROVIDE A FULLY WELDED 18 GAUGE STAINLESS STEEL COUNTER BODY.

PROVIDE A 16 GAUGE STAINLESS STEEL FULLY WELDED UNDERSHELVES. FULLY WELD THE SHELVES TO THE COUNTER BODY.

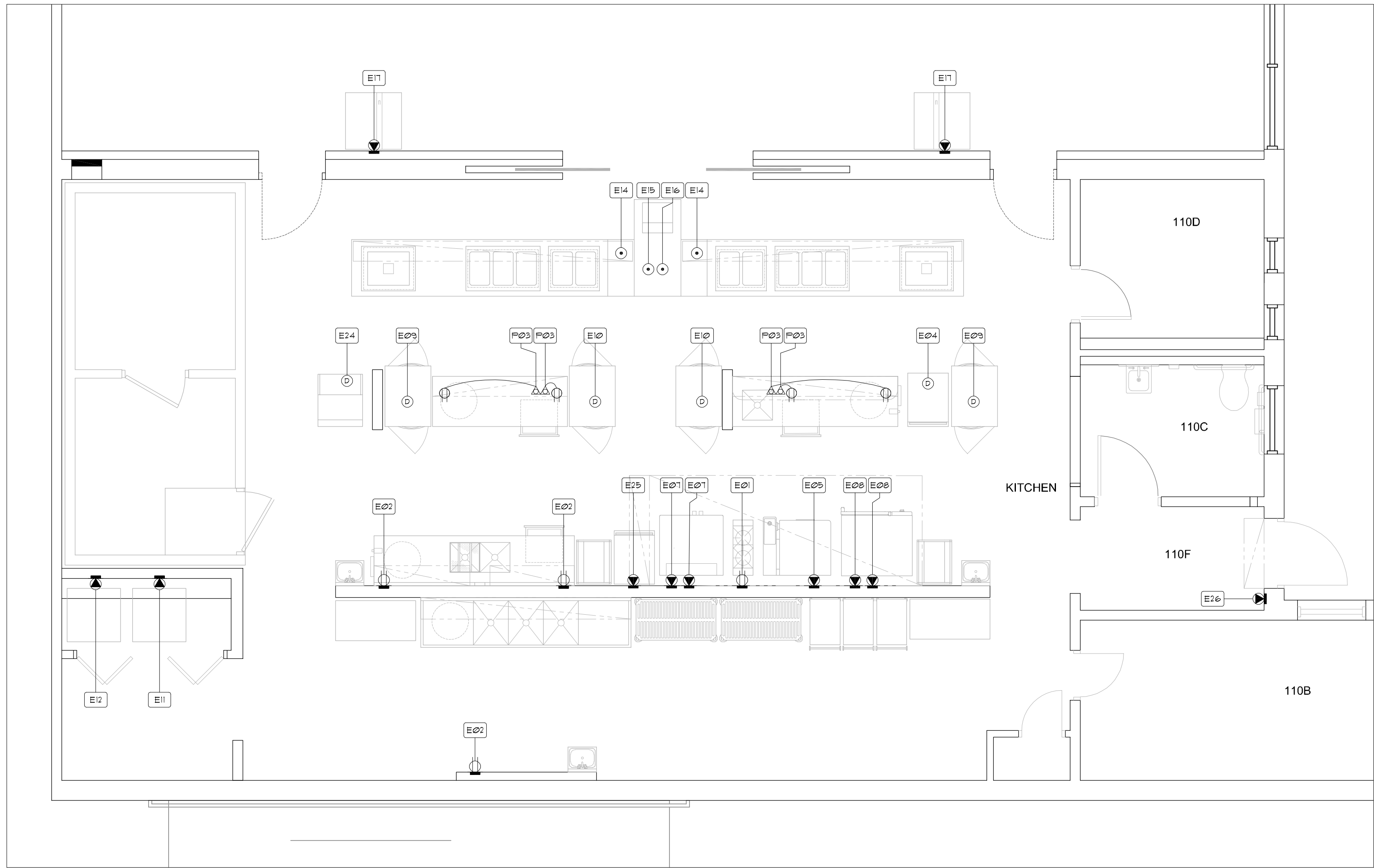
PROVIDE POLYURETHANE CASTERS WITH BRAKES AT ALL CASTERS.

## 3 SECTION - SERVING COUNTER

NO SCALE

REVISIONS	DATE	BY	SYM
12/08/2021		RS	Δ

DATE:	10/31/2022
DESIGNER:	RJS
DRAWN BY:	RJS
SCALE:	SCALE
PAGE:	FS101
REVISION:	2022.25



## 1 FOODSERVICE EQUIPMENT ELECTRICAL CONNECTIONS PLAN

1/4" = 1'-0"

PROVIDE A 1/2 GAUGE FULLY WELDED STAINLESS STEEL HAT CHANNEL THE FULL LENGTH OF THE OVERSHELF. EXTEND THE CHANNEL TO THE REAR OF THE OVERSHELF AT THE SHELF UPRIGHTS TO FORM A WIRE CHASE FOR THE ELECTRICAL OUTLETS.

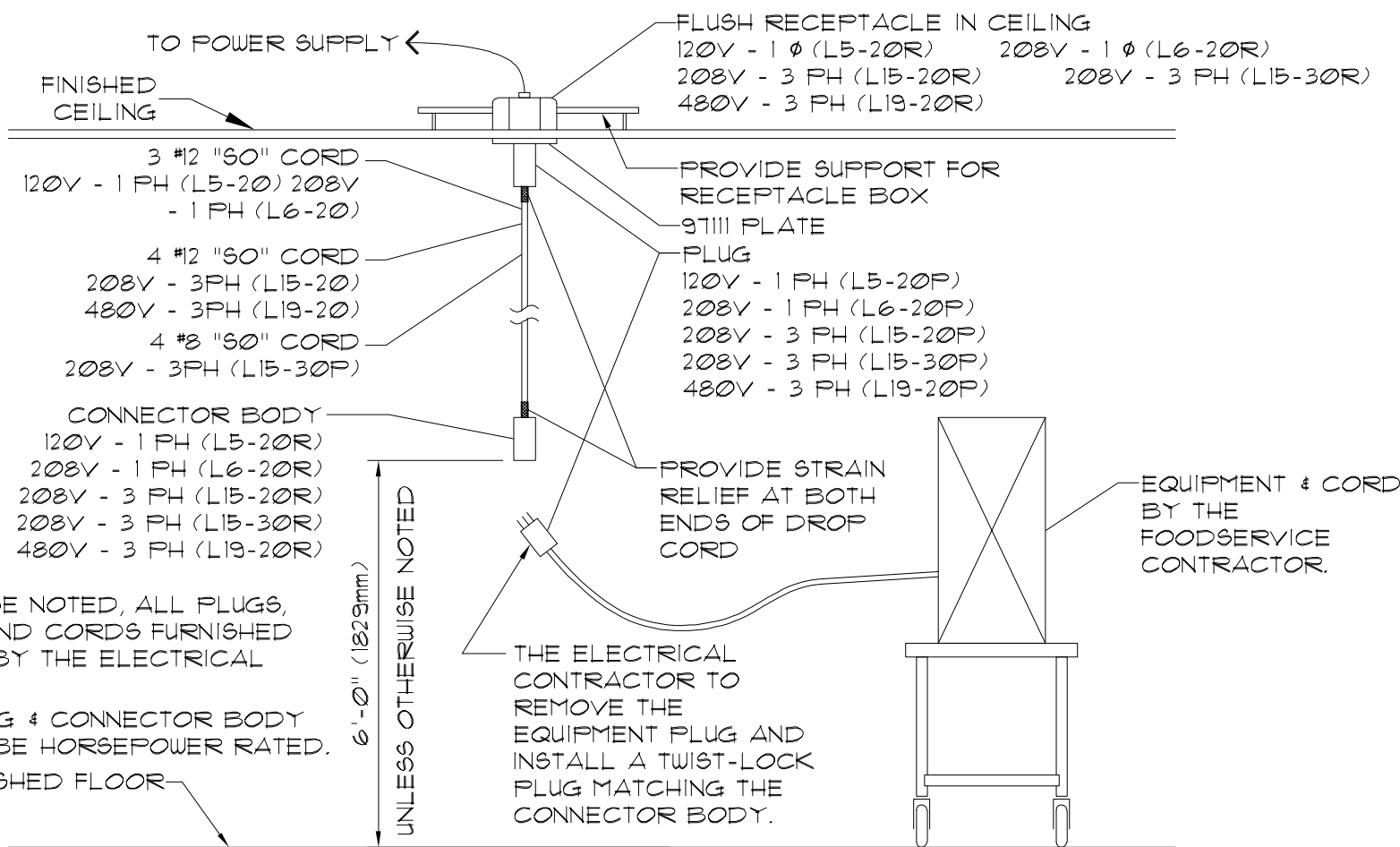
OVERSHELF PER THE SPECIFICATIONS.

PROVIDE ELECTRICAL OUTLET BOXES PER THE SPECIFICATIONS AND THE ELEVATIONS. ATTACH THE BOXES TO THE CHANNEL WITH STAINLESS STEEL SCREWS.

PRE-WIRE THE ELECTRIC OUTLET BOXES PER ALL CODES. EXTEND THE WIRES DOWN THROUGH THE SHELF UPRIGHTS TO A JUNCTION BOX MOUNTED UNDER THE TABLE TOP. PROVIDE STAINLESS STEEL COVER PLATES ON THE BOXES.

## 2 DETAIL - ELECTRICAL BOXES AT THE OVERSHELVES

NO SCALE



## 3 TYPICAL DETAIL DROP CORD RECEPTACLE

NO SCALE

## ELECTRICAL CONNECTIONS SCHEDULE

NO.	ITEM NO.	CONN.	SERVICE TO	RATING	VOLTS	PH	LOCATION	AFF	REMARKS
E01	15	DR	CONVENIENCE	16.0 A	120	1	WALL	12"	RATING ASSUMES A 200 A OUTLET.
E02	07	DR	CONVENIENCE	16.0 A	120	1	WALL	50"	RATING ASSUMES A 200 A OUTLET.
E03	23 & 25	CSR	CONVENIENCE	16.0 A	120	1	FLOOR	9"	RATING ASSUMES A 200 A OUTLET. - SEE DETAIL 3, SHEET FS401
E04	19	DCR	MOBILE PROOF/HOT CAB. IVARIO PRO L	192 KW	120	1	FLOOR	9"	SEE DETAIL 3, SHEET FS401
E05	14	JB		23.0 KW	208	3	WALL	12"	SEE DETAIL 3, SHEET FS401
E06	NUMBER	NOT USED							CORD & PLUG BY THE ELECTRICAL CONTRACTOR.
E07	16	SR	CONVECTION OVEN	1/2 HP	120	1	WALL	12"	SEE DETAIL 3, SHEET FS401
E08	13	SR	COMBI-OVEN	300 W	208	1	WALL	12"	SEE DETAIL 3, SHEET FS401
E09	22	DCR	PASS-THRU REFRIGERATOR	1/3 HP	120	1	CEILING	30"	SEE DETAIL 3, SHEET FS401
E10	24	DCR	PASS-THRU HOT CABINET	15 KW	208	1	CEILING	30"	SEE DETAIL 3, SHEET FS401
E11	02	SR	DRYER	30.0 A	120/	1	WALL	50"	CORD & PLUG BY THE ELECTRICAL CONTRACTOR.
E12	03	SR	WASHER	10.0 A	120	1	WALL	50"	
E13	NUMBER	NOT USED							125.0 AMP LOAD CENTER IN THE EQUIPMENT BT THE FOODSERVICE CONTRACTOR. 4-WIRE. LOAD SHOWN IS ACTUAL LOAD PLUS 25%.
E14	26	FR	SERVING COUNTER	25.0 A	208	3	FLOOR	0"	
E15	32	FR	POS SYSTEM	12.0 A	120	1	FLOOR	0"	
E16	32	FR	POS SYSTEM	---	---	--	FLOOR	0"	PROVIDE AN EMPTY CONDUIT FOR DATA CABLE. VERIFY THE CONDUIT SIZE AND ENDING LOCATION WITH THE OWNER.
E17	33	SR	MILK COOLER	1/5 HP	120	1	WALL	24"	
E18	NUMBER	NOT USED							
E19	NUMBER	NOT USED							
E20	NUMBER	NOT USED							
E21	NUMBER	NOT USED							
E22	NUMBER	NOT USED							
E23	NUMBER	NOT USED							
E24	21	DCR	ICE MAKER	12.1 A	120	1	CEILING	78"	CORD & PLUG BY THE ELECTRICAL CONTRACTOR. SEE DETAIL 3, SHEET FS401
E25	19	SR	MOBILE PROOF/HOT CAB.	192 KW	120	1	WALL	50"	
E26	20	SR	AIR DOOR	1/2 HP	120	1	WALL	30"	CORD & PLUG BY THE ELECTRICAL CONTRACTOR.

## ELECTRICAL NOTES

DO NOT ROUGH-IN FROM THIS DRAWING. REFER TO CONTRACTOR'S DIMENSIONED DRAWINGS.

1. VERIFY ALL ELECTRICAL CHARACTERISTICS WITH ARCHITECT'S ENGINEERING DRAWINGS.
2. DIMENSIONS INDICATED ARE TO BE VERIFIED BY THE FOODSERVICE CONTRACTOR AND ADJUSTED AS REQUIRED BY THE FOODSERVICE EQUIPMENT AND/OR FIELD CONDITIONS.
3. REFER TO ARCHITECT'S DRAWINGS FOR CLOCKS, STAFF TIME-CLOCKS AND COMMUNICATION SYSTEMS IN FOODSERVICE AREAS.

THE FOLLOWING WORK IS BY THE ELECTRICAL CONTRACTOR. REFER TO THE ELECTRICAL DRAWINGS AND/OR SPECIFICATIONS FOR ADDITIONAL INFORMATION:

4. FIELD INSTALLATION OF ACCESSORIES & FITTINGS PROVIDED LOOSE WITH THE FOODSERVICE EQUIPMENT.
5. ALL RECEPTACLES TO BE GFI RECEPTACLES PER CODES.
6. CONDUIT AND WIRING BETWEEN THE WALK-IN COOLER AND FREEZER CONDENSING UNITS AND THE EVAPORATORS FOR CONTROLS, FAN MOTORS AND DEFROST HEATING ELEMENTS.
7. CONTACTOR OR SHUNT-TRIP BREAKER FOR FUEL SHUT-OFF TO ALL ELECTRICALLY HEATED COOKING EQUIPMENT INDICATED ON DRAWINGS. FUEL SHUT-OFF DEVICE SHALL BE ACTUATED BY FIRE EXTINGUISHING SYSTEM DETECTOR LOCATED IN EXHAUST HOOD.
8. PENETRATIONS IN THE WALK-IN COOLER AND FREEZER MUST BE SEALED IN AN AIR TIGHT MANNER. INSTALL STAINLESS STEEL ESCUTCHEON FLANGE ON THE INTERIOR AND EXTERIOR OF THE UNITS. SEAL THE ESCUTCHEON FLANGE WITH SILICONE SEALANT.

## ELECTRICAL SYMBOLS

DR	DUPLEX RECEPTACLE
SR	1 PH. SINGLE PURPOSE RECP.
JB	JUNCTION BOX IN WALL
DCR	DROP CORD RECEPTACLE
CS	CONDUIT STUB UP/OUT
FR	FLUSH FLOOR RECEPTACLE
CSR	CONDUIT STUB - BTC AT RECEPTACLE FURNISHED WITH EQUIP.
BTC	BRANCH TO CONNECTION
AFF	ABOVE FINISHED FLOOR
DFA	DROP FROM ABOVE

## NOTES

THE ELECTRICAL CONTRACTOR TO ROUGH-IN FROM THE FOODSERVICE CONTRACTOR'S ROUGH-IN DRAWINGS ONLY. THE ELECTRICAL CONTRACTOR WILL TAKE FULL RESPONSIBILITY FOR THE ROUGH-IN LOCATIONS IF THE FOODSERVICE AND/OR ELECTRICAL DRAWINGS ARE USED FOR THIS WORK.

STURM CONSULTING, INC.  
FOODSERVICE DESIGN & PLANNING

STURM CONSULTING, INC.  
FOODSERVICE DESIGN & PLANNING

5838 SOUTH HUDSON PLACE  
TULSA, OKLAHOMA 74136  
PHONE (918) 280-0687  
rockysturm@cox.net

REVISIONS	DATE	BY	SYM
12/08/2021		RS	Δ

BELL ELEMENTARY SCHOOL  
6304 E. ADMIRAL BLVD., TULSA, OKLAHOMA, 74115

FOODSERVICE EQUIPMENT  
ELECTRICAL CONNECTIONS PLAN

DATE:	10/31/2022
DESIGNER:	RJS
DRAWN BY:	RJS
SCALE:	SCALE
PAGE:	FS401
REVISION:	2022.25



# SUBSTITUTION REQUEST

(During the Bidding/Negotiating Stage)

Project: Bell Elementary School

Substitution Request Number: \_\_\_\_\_

Tulsa, Oklahoma 74115

From: Saniflow Corp. / Attn: Dahiana Lopez

Date: 11/8/2022

To: Crossland Consturction Company, Inc

A/E Project Number: N/A

Re: Substitution Request

Contract \_\_\_\_\_

Specification Title: Toilet, Bath and Laundry Accessories

Description: Hand Dryer

Section: 102800

Page: 2

Paragraph: 2.2 (B)

Proposed Substitution: Speedflow Plus

Manufacturer: Saniflow Corp. Address: 3325 NW 70th Ave., Miami FL, 33122 Phone: 305-424-2433

Trade Name: Saniflow, a Mediclinics Company Model No.: M17ACS-UL

Attached data includes product description, specifications, drawings, photographs, and performance and test data adequate for evaluation of the request; applicable portions of the data are clearly identified.

Attached data also includes a description of changes to the Contract Documents that the proposed substitution will require for its proper installation.

The Undersigned certifies:

- Proposed substitution has been fully investigated and determined to be equal or superior in all respects to specified product.
- Same warranty will be furnished for proposed substitution as for specified product.
- Same maintenance service and source of replacement parts, as applicable, is available.
- Proposed substitution will have no adverse effect on other trades and will not affect or delay progress schedule.
- Proposed substitution does not affect dimensions and functional clearances.
- Payment will be made for changes to building design, including A/E design, detailing, and construction costs caused by the substitution.

Submitted by: Dahiana Lopez

Signed by: *Dahiana Lopez*

Firm: Saniflow Corp

Address: 3325 NW 70th Ave, Miami, FL, 33122

Telephone: 305-424-2433 x. 2021

## A/E's REVIEW AND ACTION

- ☐ Substitution approved - Make submittal in accordance with Specification Section 01 25 00 Substitution Procedures.
- ☐ Substitution approved as noted - Make submittal in accordance with Specification Section 01 25 00 Substitution Procedures.
- ☒ Substitution rejected - Use specified materials.
- ☐ Substitution Request received too late - Use specified materials.

Signed by: *Dahiana Lopez*

Date: 11/10/2022

Supporting Data Attached: ☐ Drawings

☒ Product Data

☐ Samples

☐ Tests

☒ Reports



# speedflow<sup>®</sup> plus

 **BuildingGreen**  
APPROVED



**SPEEDFLOW PLUS M17**  
**(M17A, M17AF, M17AB, M17AC, M17ACS)**  
 Efficient, adjustable RPM, ADA compliant  
 and with *longer* warranty than competitor.



Comparison	Speedflow Plus	QuietDry Series, TrimDry
Electrical	100-120V; 208V; 220-240V	115-240V
Air Velocity	22,000 LFM	Unlisted
Power	180-850 W (Adjustable)	1,400-1,900 W
Motor type	High pressure class F, with self-resettable safety cut-out and adjustable speed 23,000-32,000 rpm	Universal Brush Motor 8,000 RPM
Heating element (W)	0 -500 W (jumper for on/ off option)	Two coiled nickel-chrome heating elements are mounted in mica frame and protected by automatic thermal-overload switches
Construction Materials	Steel, Cast Iron, Stainless Steel	Stainless Steel & UL 94-5VA Plastic
Air temperature – (at 4” distance/ T amb. 77 °F)	93°F-109°F	Unlisted
Color finish	5 finishes: Stainless steel one-piece cover bright & satin finish, white epoxy, black graphite, or white porcelain in cast Iron	Stainless Steel and White Epoxy
MAP Price	\$390.00	\$509.22
Dimensions	10 1/2”H x 11 1/2”W x 4”D	13-25/32" H x 13-19/32" W x 4" D
Operation	Touch free infrared sensor. Auto 2 second shutoff after hands are removed	Automatic activation with infrared sensor
Weight	8.4 lbs. (15.67 lbs Cast iron M06AF)	14 lbs.
Safety shut off	Safety shut-off after 60 seconds of continous use.	Automatic disconnection after 60-90 seconds of continous use
Drying time	Approx.10-15 seconds	>25 seconds
Limited Warranty	5 years	3 years
Noise Level	57-65 dBA	71 dBA
HEPA Filter	Yes	No
Protection Level	IP23	Unlisted
Sensor	Adjustable 2”-8” infrared	Automatic infrared sensor
BuildingGreen Approved	Yes	Yes
ADA surfaced mounted	Yes	Yes

# HAND DRYERS

sensor operated

# speedflow® plus

Legend for symbols shown on last page of catalog

## M17A-UL

material: steel  
finish: white epoxy



## M17AF-UL

material: cast iron  
finish: white porcelain enameled



## M17AB-UL

material: steel  
finish: black epoxy



## M17AC-UL

material: stainless steel AISI 304  
finish: bright



## M17ACS-UL

material: stainless steel AISI 304  
finish: satin



### M17A-UL · M17AF-UL · M17AB-UL · M17AC-UL · M17ACS-UL

- 3/16" thick cast iron or 1/16" thick stainless steel one piece cover.
- High pressure class F motor, with self.resetable safety cut-out and adjustable speed between 23,000 and 32,000 rpm..
- HEPA filter medium cartridge.
- ADA compliant (no recessed kit needed).
- Universal Voltage (from 100 to 240 V).
- Sensors come with a vandal-resistant polycarbonate viewing window.
- Cover fixed to the base by means of 2 vandal-proof lock screws and lock with special Speedflow wrench.

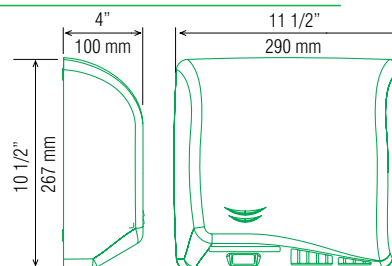
### COMPONENTS AND MATERIALS

- Fully adjustable (2" – 8") IR electronic detection sensor by means of a potentiometer.
- Automatic disconnection system after 30 seconds of continuous use.
- Heating element with a self-resettable safety cut-out. It can be switched off manually with an ON/OFF micro switch located on the electronic board.
- Aluminum centrifugal double asymmetrical inlet fan wheel.
- Fire resistant plastic UL 94-V0 fan scroll.
- UL and CSA approved
- Optional odor neutralizer tablet for a cleaner and more pleasant atmosphere in the washroom.

### M17A-UL · M17AF-UL · M17AB-UL · M17AC-UL · M17ACS-UL

### TECHNICAL SPECIFICATIONS

Estimated drying time	10-12 seconds	Total Power:	180 - 850W
Voltage	100-120 V; 208V; 220-240 V	Heating Element:	500 W
Frequency	50/60 Hz	Protection level	IP23
Power Consumption	H. Element OFF: 2.5 - 3.5 A H. Element ON: 4.8 - 7 A	Effective airflow	20 - 27 CFM
Electrical insulation	Class I (ground required)	Air temp (at 4" distance/77°F)	93° - 103°F
Motor Power	350 W	Dimensions	11-1/2" x 10 5/8" W x 4"
rpm	23,000 - 32,000 rpm	Weight	All: 8,4 Lbs M17AF-UL: 15,65 Lbs
Air speed:	250 mph	Noise level	57-65 dBA



Dimensions for M06A/AB/AC/ACS



M17A-UL / M17AB-UL / M17AC-UL / M17ACS-UL / M17AF-UL

**General Description**

- Warm air high speed hand dryer recommended for very high traffic areas.
- Surface mounted ADA-compliant.
- Maximum robustness and vandal-proof.
- Energy efficient, it only consumes 2.8 watts per drying cycle.
- Building Green Approved & offering LEED Credits.
- HEPA filter medium cartridge which filters solid particles in suspension, improving air quality.
- Universal voltage.

**Components & Materials**

- **M17A-UL:** 1/16" (1.5 mm) thick one-piece steel cover; white epoxy finish
- **M17AB-UL:** 1/16" (1.5 mm) thick one-piece steel cover; black epoxy finish
- **M17AC-UL:** 1/16" (1.5 mm) thick one-piece stainless steel cover; bright finish
- **M17ACS-UL:** 1/16" (1.5 mm) thick one-piece stainless steel cover; satin finish
- **M17AF-UL:** 3/16" (4.5 mm) thick one-piece cast iron cover, white porcelain finish
- **MOTOR:** High pressure class F, with self-resettable safety cut-out and adjustable speed between 23,000 and 32,000 rpm. This regulation is carried out manually by means of a potentiometer located on the electronic board to adjust the power consumption of the dryer. The motor has been configured to have a smooth start to extend its life.
- **ELECTRONIC DETECTION SENSOR:** by infrared beam with detection distance adjustable by potentiometer between 2" and 8". It incorporates a safety system that detects any fixed target and makes hand dryer stop automatically in case a fixed object is placed in front of the sensor. In addition it has an automatic disconnection system of the unit after the 30 seconds of continuous use of the dryer.
- **500 W HEATING ELEMENT:** with a self-resettable safety cut-out. It can be switched off manually with an ON/OFF micro switch located on the electronic board, allowing to regulate the power consumption of the hand dryer.
- **BASE PLATE:** made of aluminum, it incorporates acoustic dampening elements (silent-blocks) for the suppression of mechanical vibrations.
- **FAN SCROLL:** made with Polyamide 6 (PA 6) incorporating a flame retardant additive (UL 94 V0) that increases the resistance to plastic ignition and once ignited reduces the rate of flame propagation.
- **HEPA FILTER MEDIUM CARTRIDGE:** Filters solid particles in suspension, significantly improving air quality. This filter traps micro particles in the air such as pollen, dust mites, fungi, tobacco smoke, etc..
- **ODOR NEUTRALIZER TABLET:** an optional odor neutralizer tablet for a cleaner and more pleasant atmosphere in the bathroom is available (Code RCPOM14).
- **WALL FIXING ELEMENTS:** stainless steel screws for brick wall with their corresponding plastic plugs are provided with the hand dryer.

**Technical Specifications**

Voltage - 100-120V; 208V; 220-240V	Total power - 180- 850 W
Frequency - 50/ 60 Hz	Motor Power - 350 W
Insulation - Grounding required (Class I)	Heating element: 0 or 500W
Dimensions	Consumption
M17A/AC/AB/ACS 10 1/2"H x 11 1/2"W x 4"D	H. Element OFF: 2.5 - 3.5A
M17AF 10-5/8"H x 11-5/8"W x 4"D	H. Element ON: 4.8 - 7A
Weight - M17A/AC/AB/ACS - 8.4 Lbs.	r.p.m. - 23,000-32,000 rpm
M17AF - 15,65 Lbs.	
Effective airflow - 20-27 CFM	Air temperature - (at 4" distance/ T amb. 77 °F) 93-109 °F
Max air velocity - 250 mph/ 22,000 LFM	Drying time - 10 - 12 sec
Protection level - IP23	Noise level (at 79") - 57 - 65 dBA



Please mark the selected item

☐


code  
**M17A-UL**  
material  
steel  
finish  
white epoxy

☐


code  
**M17AB-UL**  
material  
steel  
finish  
black epoxy

☐


code  
**M17AC-UL**  
material  
stainless steel  
AISI 304  
finish  
bright

☐


code  
**M17ACS-UL**  
material  
stainless steel  
AISI 304  
finish  
satin

☐


code  
**M17AF-UL**  
material  
cast iron  
finish  
white porcelain  
enamel coating

**Operation**

Place hands under the air outflow valve. The dryer will start automatically, and go on with no interruption as long as the hands are kept in the detection range of the sensor. The appliance will stop 2 seconds after the hands are removed from the airflow.



Saniflow Corp reserves the right to make changes and/or modifications to the products and their specifications without warning or notice.

For further info please contact SANIFLOW on: Toll free: **1-877-222-9125** or visit our website at **www.saniflowcorp.com**

Tel: +1 (305) 424 2433 Fax: +1 (305) 424 2435 · **sales@saniflowcorp.com**

## Installation

Verify all rough-in dimensions prior to installation. Hand dryers require a dedicated circuit and must be properly grounded. A GFCI (Ground fault circuit interrupter) is recommended. One side of dryer should be mounted to a stud.

## Certificates & Qualifications

Unit shall be UL and CSA approved, according to UL 499; CSA C22.2 Standards and Building Green Approved. UL and CSA approved according to UL 499 and CSA C22.2 Standards.

## N° dryers to be fitted

- In toilet areas with a normal frequency of use and only one wash-basin: 1 dryer.
- In toilet areas with a normal frequency of use and more than one wash-basin: 1 dryer for each 2-3 wash-basins.
- 1 row of 4 wash basins: 2 dryers; 1 row of 6 wash basins: 3 dryers; 1 row of 8 wash basins: 4 dryers.
- In toilet areas with high traffic and more than one wash-basin: 2 dryers for each 3 wash-basins.
- 1 row of 4 wash basins: 3 dryers; 1 row of 6 wash basins: 4 dryers; 1 row of 8 wash basins: 5 dryers.

## Ideal location

Between the wash-basin and exit. It is not recommended to install dryer between wash-basins, next to urinals, lavatories and showers. If installing automatic dryers over marble surface or ledge, the minimum distance from the dryer to the ledge must be 15-3/4". It is recommended that hand dryers be distributed throughout the washroom area to avoid overcrowding.

## Guide Specification

Surface-mounted ADA compliant hand dryer shall have a 1/16" thick steel cover with white epoxy finish (M17A-UL), or a 1/16" thick steel cover with black finish (M17AB-UL), or a 1/16" thick stainless steel cover with bright finish (M17AC-UL), or a 1/16" thick stainless steel cover with satin finish (M17ACS-UL), or a 3/16" thick cast iron with white porcelain enamelled coating (M17AF-UL). Hand dryer shall include aluminum base plate 1/8" thick, infrared sensor adjustable (2" to 8") via potentiometer, universal brush motor fully adjustable (23,000-32,000 RPM) via potentiometer as well and HEPA filter medium cartridge which filters solid particles in suspension, significantly improving air quality. Dryer shall operate at 57-65 dBA while delivering 20-27 CFM of air at 109 °F (42°C) and 250 mph as maximum air velocity (Max - 22,000 LFM) during user controlled drying cycle. Dryer shall have a total power of 180 - 850 W with a consumption of 2.5 - 7 A. Heating element made of Ni-Cr and with a self-resettable safety cut-out. It can be switched off manually "ON / OFF" micro-switch located on the electronic board, allowing to regulate the power consumption of the hand dryer. In case of motor failure the heating element is immediately switched off automatically.





Unit shall be UL and CSA approved, according to UL 499, CSA C22.2 standards, and Building Green Approved.

## Overall dimensions:

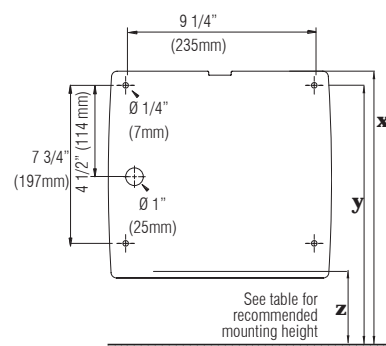
M17A, M17AB, M17AC, M17ACS: 10 1/2"H x 11 1/2"W x 4"D (270mm x 290 mm x 100 mm)

M17AF: 10-5/8"H x 11-5/8"W x 4"D (270 mm x 295 mm x 102 mm)

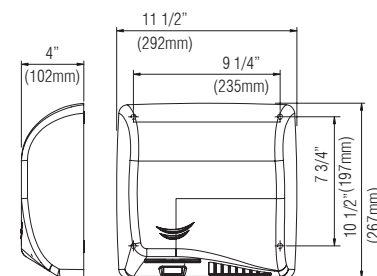
## Recommended heights from floor

				
	Male	Female	Child	Disabled
<b>x</b> To top of machine	56" / 142 cm	54" / 137 cm	46" / 117 cm	48" / 122 cm
<b>y</b> To mounting bracket screw	55" / 140 cm	53" / 135 cm	45" / 115 cm	47" / 120 cm
<b>z</b> To sensor top	46" / 117 cm	44" / 112 cm	36" / 92 cm	38" / 97 cm

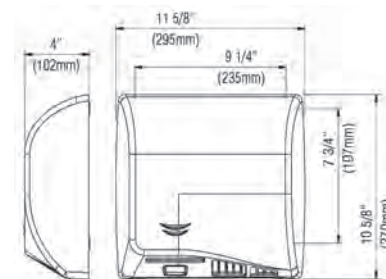
## MOUNTING



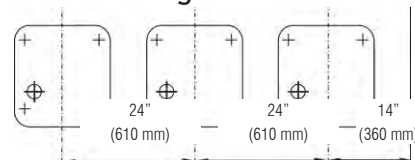
## M17A-UL / M17AB-UL / M17AC-UL / M17ACS-UL



## M17AF-UL



## Serial mounting



Job:

Model number:

Variations:

Architect / Engineer:

Contractor:

Customer / Wholesaler:

City / State / Country:

Date:

Quantity:

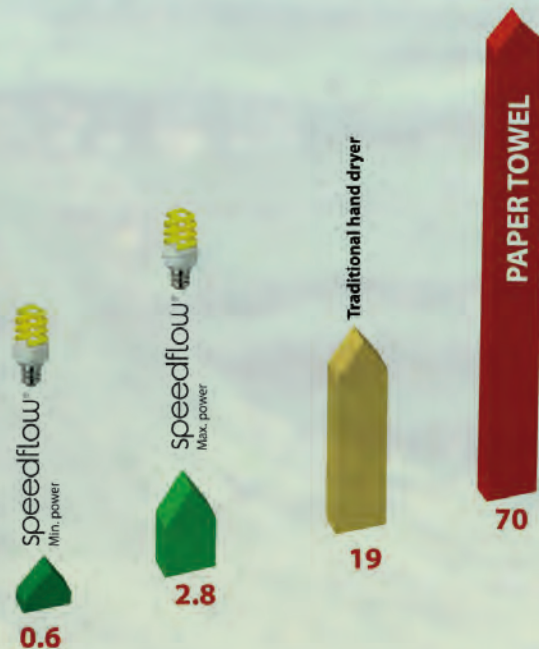
Saniflow Corp reserves the right to make changes and/or modifications to the products and their specifications without warning or notice.

For further info please contact SANIFLOW on: Toll free: **1-877-222-9125** or visit our website at **www.saniflowcorp.com**

Tel: +1 (305) 424 2433 Fax: +1 (305) 424 2435 · **sales@saniflowcorp.com**

The new generation of **SPEEDFLOW**® hand dryers is quicker, more hygienic, more comfortable, quieter and more energy-efficient, providing a unique experience in the hand drying field.

## CONSUMPTION IN WATTS HOUR PER DRYING CYCLE



## LOW CONSUMPTION



**Minimum consumption**  
Between 0.6 and 2.8 W/h per drying cycle and 0.4 W in stand-by. One of the lowest in the market.



**Adjustable motor speed**  
Adjustable energy consumption, noise level and drying time, consequently.



**Heating element with ON/OFF micro-switch**  
Placed in the electronic circuit board, makes it possible to activate/deactivate the heating element.

## HYGIENE



**Automatic activation**  
The user does not need to touch the hand dryer, which helps prevent cross-contamination, improving hygiene and aseptis.



**HEPA filter medium**  
Cleans the air stopping the particles of dirt, dust, bacteria, pollen, etc. Fresh and particle-free air.



**Odor neutralizer tablet**  
For a more pleasant atmosphere in the washroom.

## COMFORT



**Heating element**  
Energy saving (only 500W), to ensure maximum comfort when drying hands.



**Quiet. 57 dBA**  
Thanks to the acoustic dampening elements used and a better-balanced mechanically motor, among others.



**Air curtain drying**  
A well-designed air outlet blows air caressing and drying hands thanks to a pleasant air curtain.

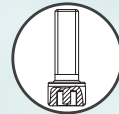
## SAFETY



**Fixed-target detection**  
If a static object is detected by the sensor, the hand dryer automatically stops after 3-5 seconds as a security measure.

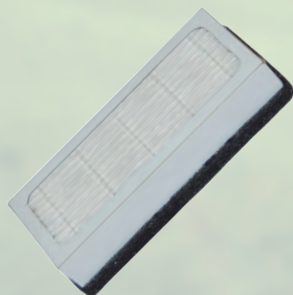


**Automatic safety cut-out**  
After 30" of continuous use, the hand dryer switches off automatically.



**Vandal-proof locking system**  
The metal casing is fixed to the aluminium base plate by means of 2 vandal-proof screws.

## Air quality and noise pollution improvement thanks to its new filter and inner design



The new **SPEEDFLOW**® comes as standard with a cartridge that holds an HEPA filter medium that filters suspended solid particles (pollen, dust mites, cigarette smoke, etc.), notably improving the air quality.

Furthermore, this cartridge also contains and activated carbon filtering medium that neutralizes odours and absorbs fumes and gases, helping avoid bad odours.



The new **SPEEDFLOW**® is much quieter thanks to:

- The acoustic dampening elements used for fixing the nozzle to the base plate and also in the motor bracket.
- A inner nozzle design which minimizes the pressure drop and the turbulences, reducing the noise level consequently.
- The air outlet geometry minimizing unwanted acoustic effects .
- A motor with a built-in fan, better-balanced mechanically, reducing the vibrations transmitted to its supports



# CSI Form 1.5C

## SUBSTITUTION REQUEST (During the Bid Period)

Project: TPS Bell Elementary Substitution Request Number: \_\_\_\_\_  
From: Triple C Lighting & Controls  
To: Crossland Construction Date: 11/8/22  
A/E Project Number: \_\_\_\_\_  
Re: Light Fixture Substitutions Contract For: \_\_\_\_\_

Specification Title: 260400 Description: Interior Lighting  
Section: \_\_\_\_\_ Page: \_\_\_\_\_ Article/Paragraph: \_\_\_\_\_

Proposed Substitution: Fixture type A, B & C  
Manufacturer: Acuity Brands Address: One Lithonia Way, Conyers, GA 30012 Phone: 1-800-705-7378  
Trade Name: Electrical / Lighting Model No.: \_\_\_\_\_

Attached data includes product description, specifications, drawings, photographs, and performance and test data adequate for evaluation of the request; applicable portions of the data are clearly identified.

Attached data also includes a description of changes to the Contract Documents that the proposed substitution will require for its proper installation.

The Undersigned certifies:

- Proposed substitution has been fully investigated and determined to be equal or superior in all respects to specified product.
- Same warranty will be furnished for proposed substitution as for specified product.
- Same maintenance service and source of replacement parts, as applicable, is available.
- Proposed substitution will have no adverse effect on other trades and will not affect or delay progress schedule.
- Proposed substitution does not affect dimensions and functional clearances.
- Payment will be made for changes to building design, including A/E design, detailing, and construction costs caused by the substitution.

Submitted by: Shane Bryant  
Signed by: Shane Bryant  
Firm: Triple C Lighting & Controls  
Address: 1212 W. Main St  
Oklahoma City, OK 73106  
Telephone: 405-235-5456

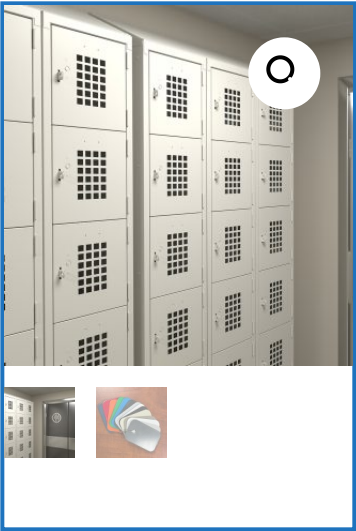
### A/E's REVIEW AND ACTION

- ☐ Substitution approved - Make submittals in accordance with Specification Section 01 25 00 Substitution Procedures.  
☐ Substitution approved as noted - Make submittals in accordance with Specification Section 01 25 00 Substitution Procedures.  
☒ Substitution rejected - Use specified materials.  
☐ Substitution Request received too late - Use specified materials.

Signed by: Daniel PER NOTE B ON THE LIGHTING FIXTURE SCHEDULE, THERE ARE NO SUBSTITUTIONS ACCEPTED FOR THIS JOB. Date: 11/10/2022

Supporting Data Attached: ☐ Drawings ☐ Product Data ☐ Samples ☐ Tests ☐ Reports ☐ \_\_\_\_\_

Home / Material Handling Equipment &  
Warehouse Storage / Lockers




# Lockers

Model	Image	Product	Height	Width	Length	Weight
WL-16-CB		Locker, Garment, 16 person, 18" depth	78in	18in	72in	193lbs
WL-21		Locker, Double Tier, 1 column, 2 lockers per column, 12" depth	78in	12in	12in	59lbs

Model	Image	Product	Height	Width	Length	Weight
WL-21-ST		Locker, Double Tier, 1 column, 2 lockers per column, slant top, 12" depth	78in	12in	12in	55lbs
WL-4		Lockers, wall mounted, 4 lockers, garment bar, 18" depth	13in	18in	48in	49lbs
WL-55		Locker, Five Tier, 1 column, 5 doors per column, 12" depth	66in	12in	12in	45lbs

Model	Image	Product	Height	Width	Length	Weight
WL-55-ST		Locker, Five Tier, 1 column, 5 doors per column, slanted top, 12" depth	66in	12in	12in	54lbs
WL-6		Locker, Double Tier, 3 columns, 2 lockers per column, 12" depth	78in	12in	36in	178lbs
WL-618		Lockers, 6-tier, 3 columns, 18 locker, 12" depth	78in	12in	36in	172lbs
WL-618-15		Lockers, 6-tier, 3 columns, 18 locker, 15" depth	78in	15in	36in	211lbs

Model	Image	Product	Height	Width	Length	Weight
WL-618-18		Lockers, 6-tier, 3 columns, 18 locker, 15" depth, 18" depth	78in	18in	36in	156lbs

Category: [Material Handling Equipment & Warehouse Storage](#)

Description

Description

Multi-User Steel Lockers can be used in all types of facilities, and industries, perfect for any environment. All Lockers open with door pulls and will accept padlocks (not included) for Positive Latching. Also can be used with flat key lock (not included). Doors are mesh grid vented. For clear identification of personal items and security. Enclosed Bases prevent dirt, dust and debris from accumulating under the lockers keeping the locker area clean and reducing labor costs. Shipped fully assembled, ready to use upon arrival. Sequentially numbered labels provided for easy identification. Standard color is Beige. Specialty colors are available – minimum quantities apply.







Founded in 1946

## Contact:

[Sales Locator](#)

[Contact Us](#)

## Customer Care:

800.444.3595

[customerservice141@winholt.com](mailto:customerservice141@winholt.com)

[orders@winholt.com](mailto:orders@winholt.com)

## Corporate:

[About Us](#)

## Support Materials:

[eCatalogs & Industry Brochures](#)

[Terms of Sale](#)

[Warranties](#)

