



Tecton
ARCHITECTS

WORKSHOP #2

CONCEPT WORKSHOP

NEW ELEMENTARY SCHOOL (PK-5)

Virtual Zoom Webinar

11.09.2022

Start: 6:00PM

End: 8:00PM



1. Team Introduction
2. Critical Aspects of the Project
3. Project Roadmap
4. What We've Heard So Far
5. Concept Development
6. How to Stay Connected

Throughout the
webinar, please
use Zoom's
Q&A feature
to submit your
questions!



JEFF WYSZYNSKI
AIA

Principal-in-Charge



JUSTIN HOPKINS
RA

Senior Project Manager
Team Lead



ERNEST NEPOMUCENO
LEED AP

Senior Designer



KATHRYN MEASE
NCIDQ, EDAC,
LEED AP BD+C

Senior Interior
Designer



ANTONIA CIAVERELLA
EDAC, LEED AP BD+C,
WELL AP, FITWEL

Sustainability
& Wellness



RACHEL PEPIN

Architectural Designer



RYAN DEANE
ASLA, PLA

Senior Landscape Architect,
Benesch



WILLIAM WALTER
PE, LEED AP

Senior Project Manager,
Benesch

KOHLER RONAN

MEP Engineering, Fire Protection

ALFRED BENESCH & COMPANY

Civil Engineering, Landscape
Architecture, Survey, Geotech

MICHAEL HORTON ASSOCIATES

Structural Engineering

PAN AMERICAN CONSULTING SERVICES

Cost Estimating

CAVANAUGH TOCCI ASSOCIATES

Acoustical Engineering

CRABTREE MCGRATH ASSOCIATES

Kitchen Design

Responsible

Respectful of the variety of needs, balances your vision with established requirements, project budget, longevity

Functional

Adaptable, flexible, ability to serve multiple uses, scalable, ease of maintenance

Design

Forward-thinking, diverse, inclusive, daylit, connection to outdoors, sustainable (PV/geothermal), resilient, collaborative, supports project based & small group learning, reflective of community, safe, secure and welcoming

Community Use

Accessible, separable space, durable

Site Design

Functional educationally: outdoor education / presentation / learning, safety & security

Functional technically: traffic flow, on site sanitary, overflow parking, FEMA & wetlands

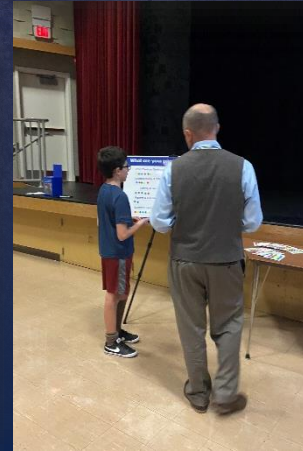
Design Phase Detail Schedule

2022



2023

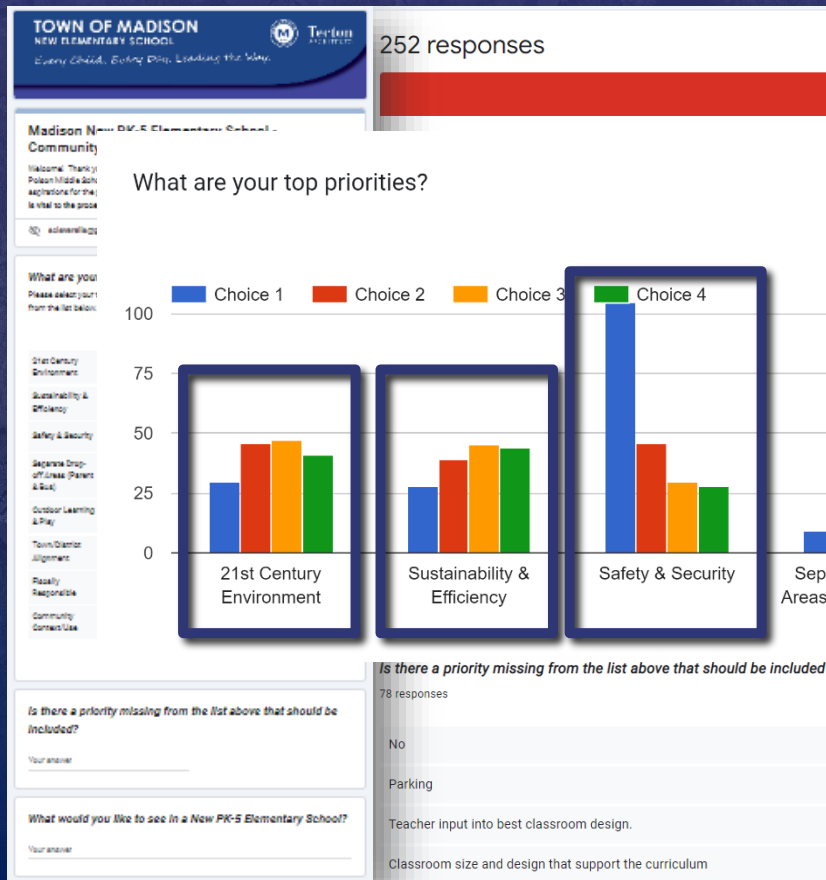
Workshop #1 – Visioning Session



- Underscored the need to engage teachers in the conversation
- Connections to nature and outdoor play/learning
- Opportunities for peer-to-peer collaboration but also mentorship from Middle and High School
- Special Education spaces and resources for all students
- Safety on site and in the building

Community Survey #1

252 responses!
Survey #1 closed on 10/10



Top Priorities seem to be 21st C Learning, Sustainability, Safety and Outdoor Learning/Play

What would you like to see in a New PK-5 Elementary School?

136 responses



Tecton
ARCHITECTS

RECAP OF CONCEPT & SCHEMATIC DESIGN

- Site
- Building
- Interiors
- Systems

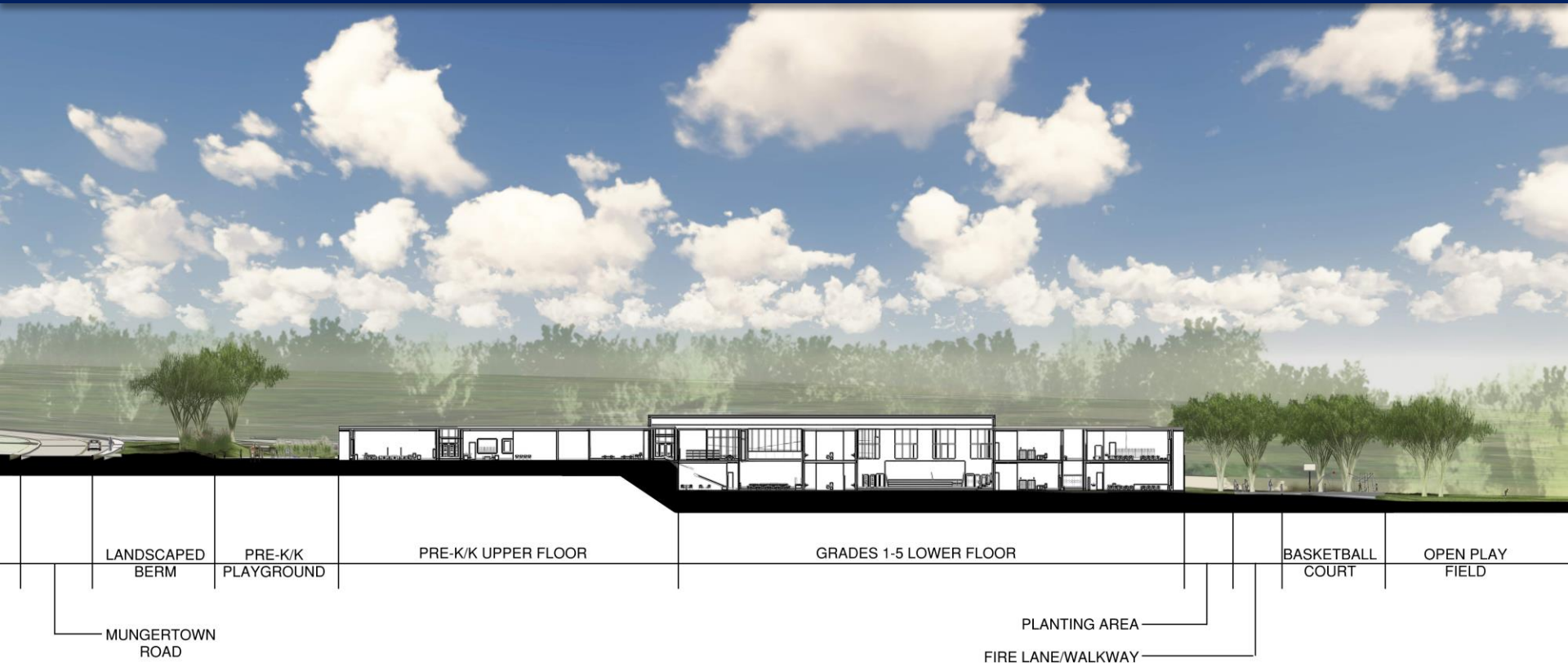


Tecton
ARCHITECTS

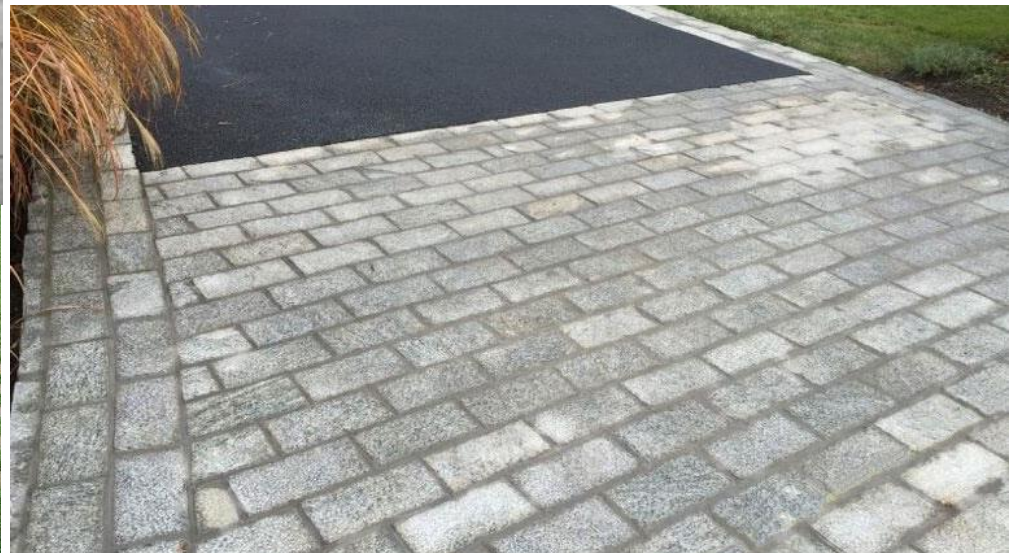
SITE DEVELOPMENT



- A** Parent Pick Up & Drop Off
- B** Bus Pick Up & Drop Off
- C** Visitor Parking
- D** Staff Parking
- E** Age Appropriate Playscapes
- F** Playfield
- G** Pollinator Pathway
- H** Outdoor Learning
- I** Loading & Utilities













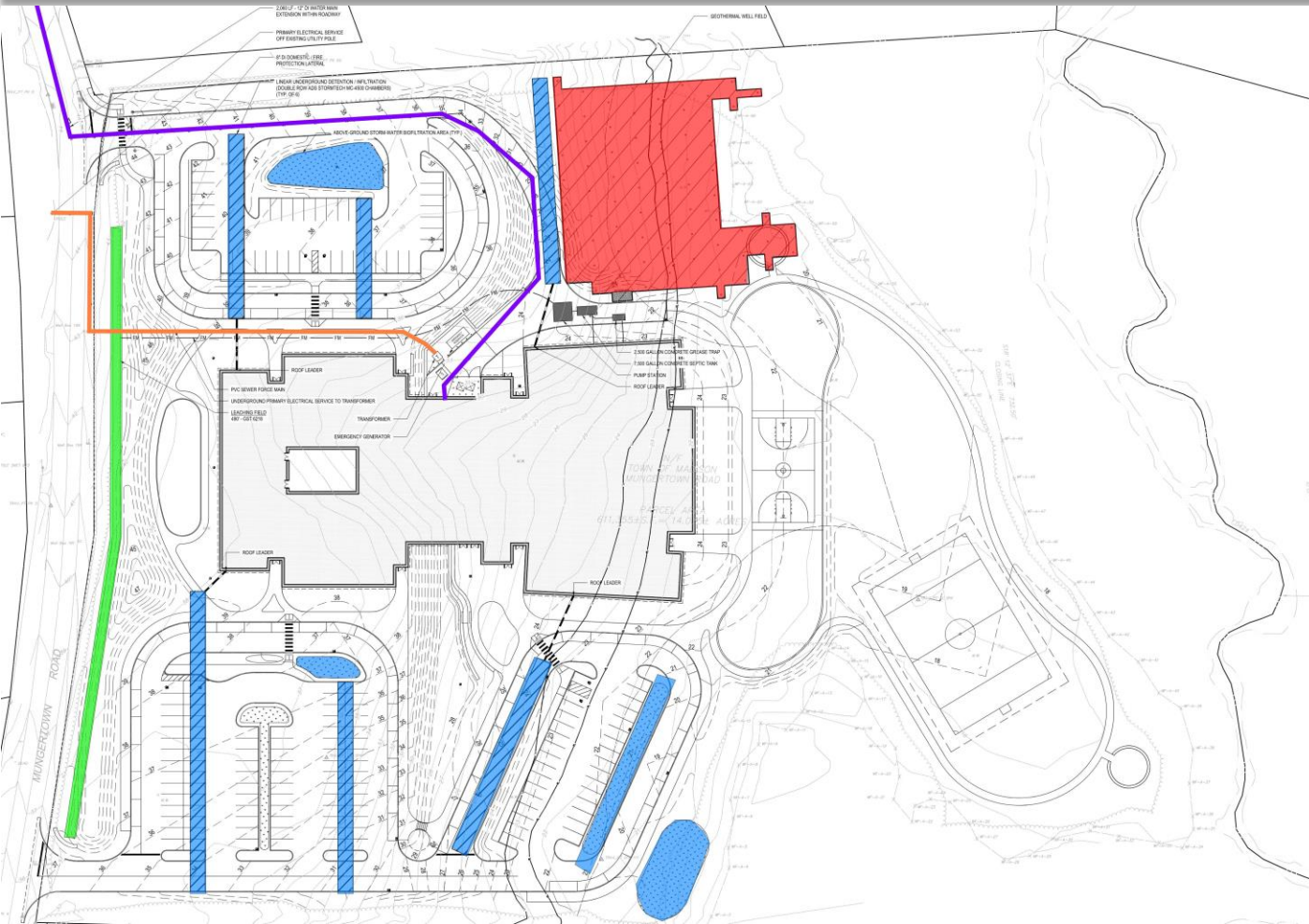








Concept Development | Schematic Utility Plan

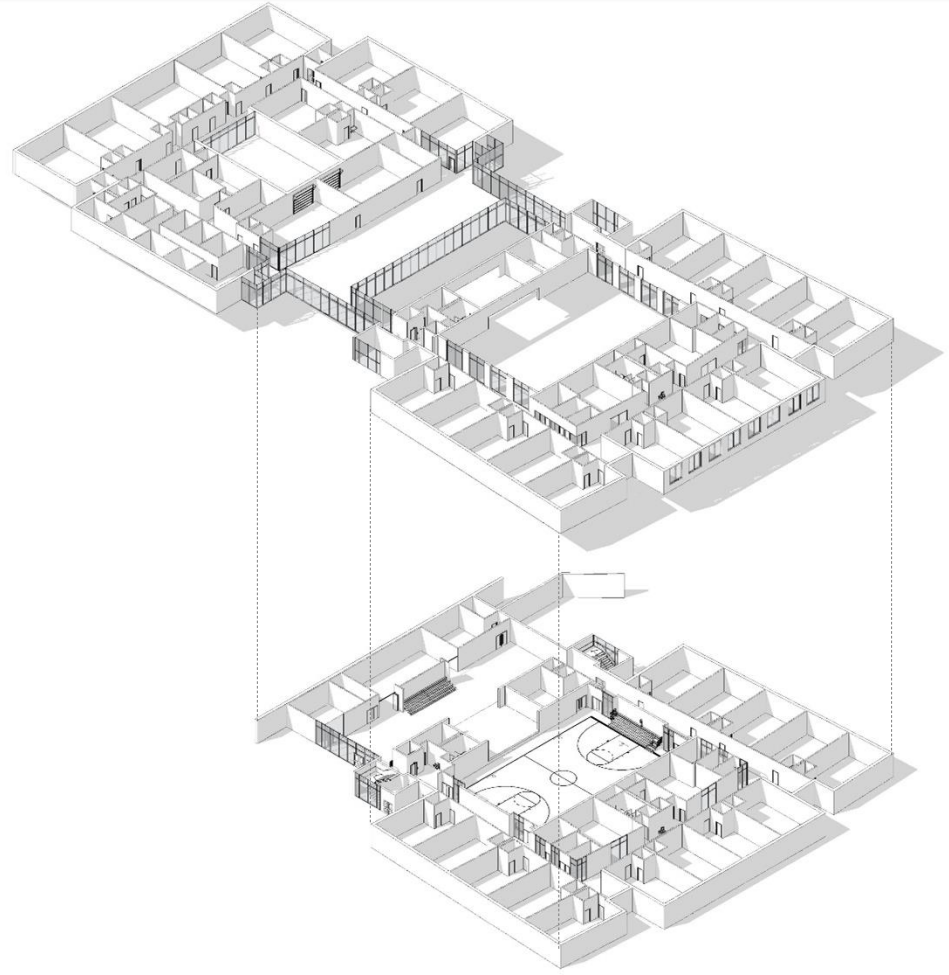


- Septic
- Water
- Stormwater
- Electric
- Geothermal

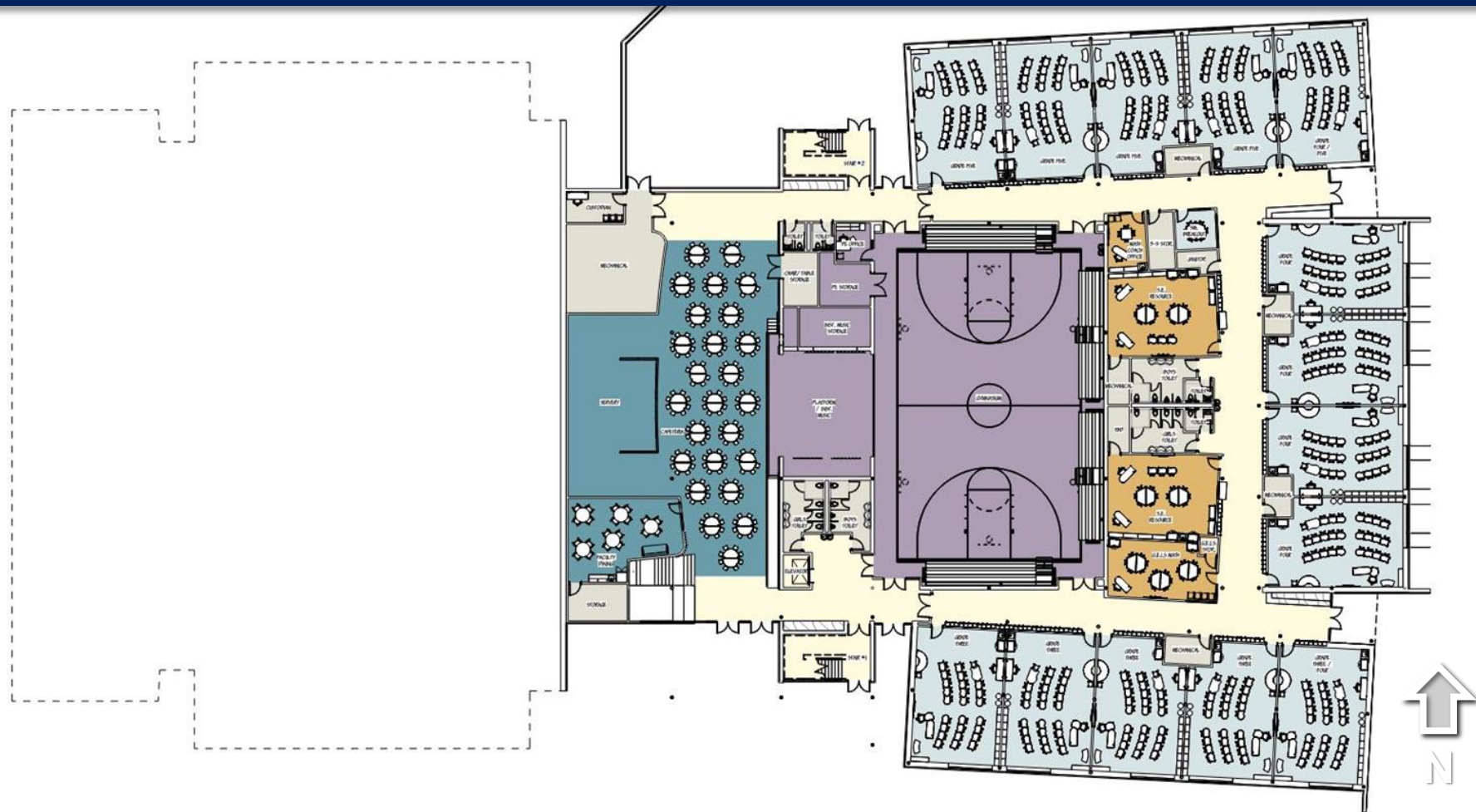


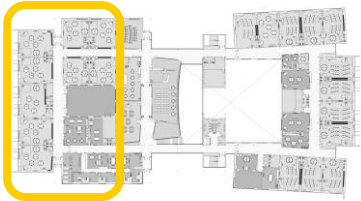
Tecton
ARCHITECTS

BUILDING DEVELOPMENT

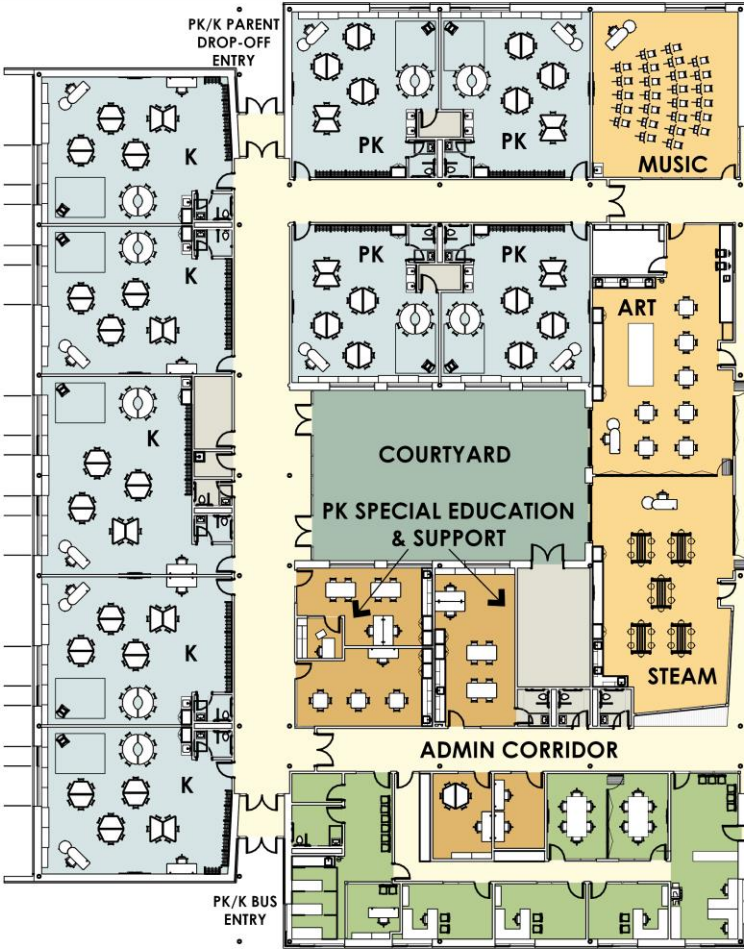


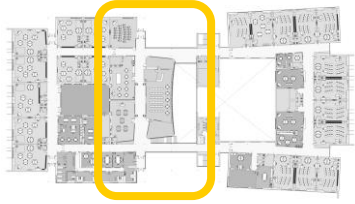




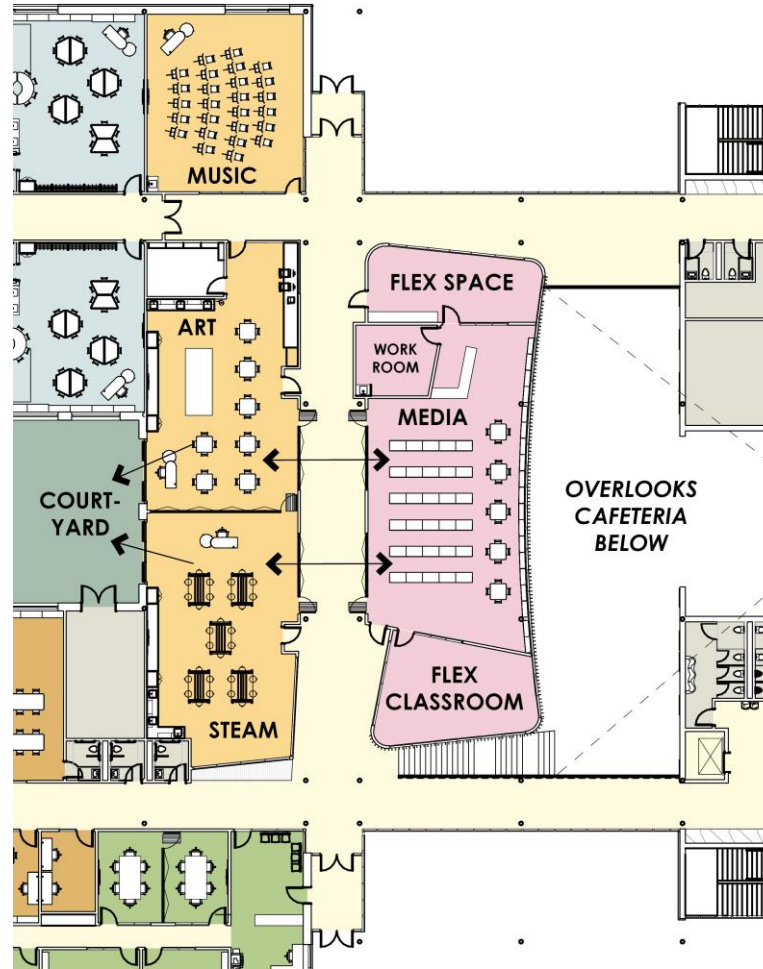


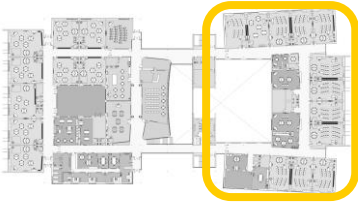
Main Floor Plan



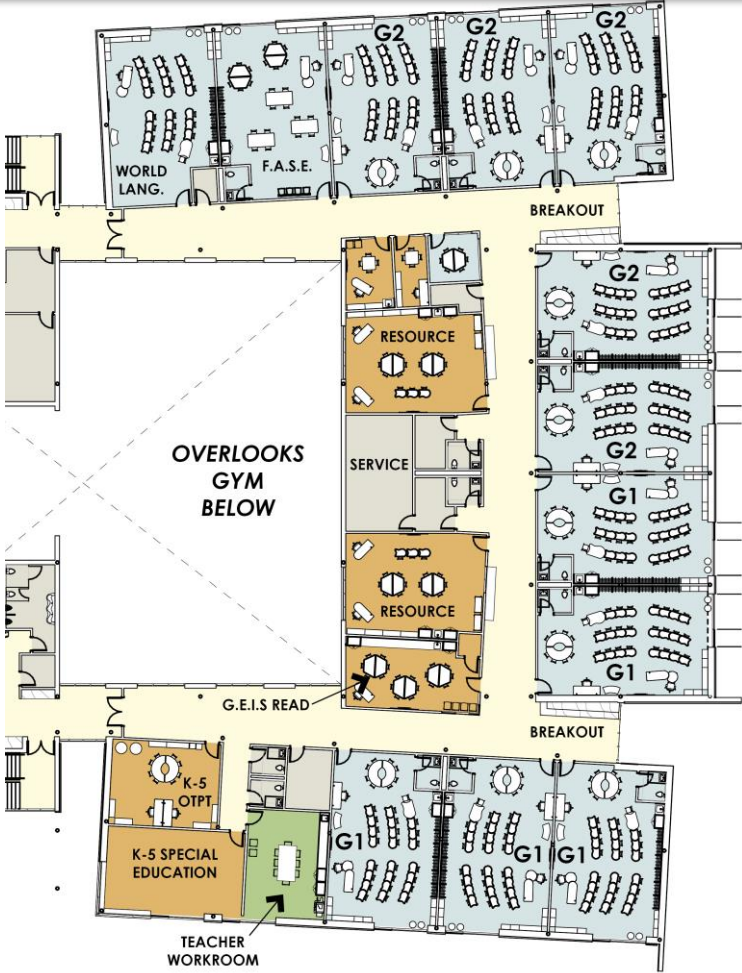


Main Floor Plan



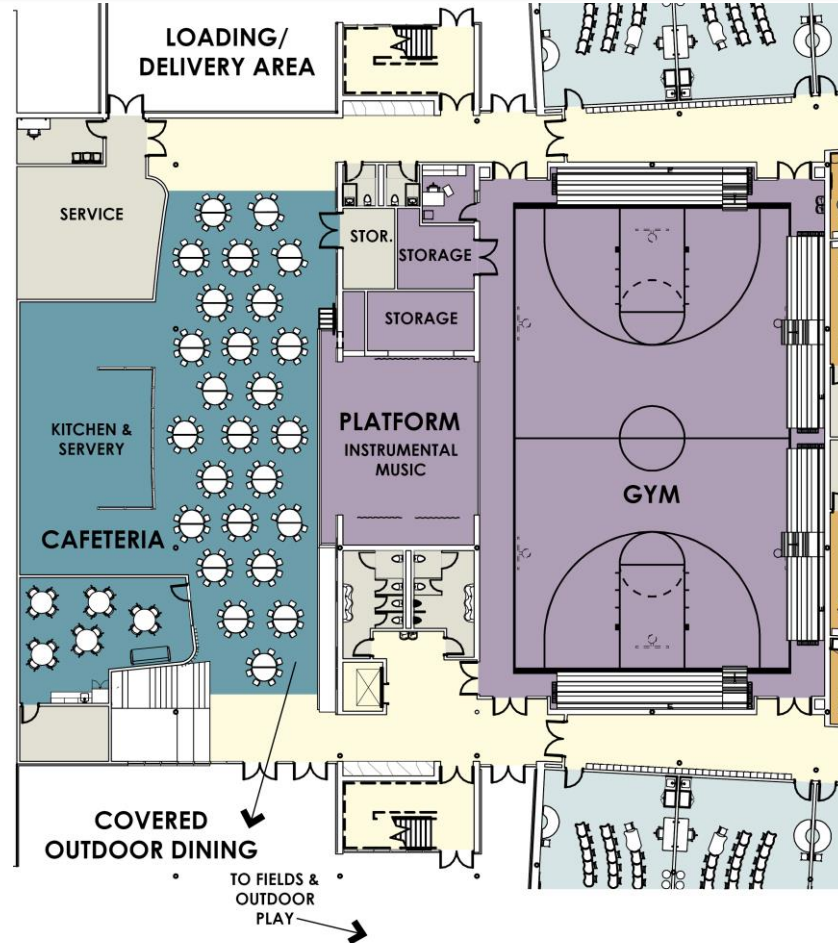


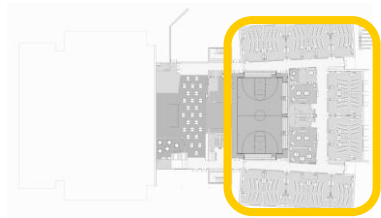
Main Floor Plan



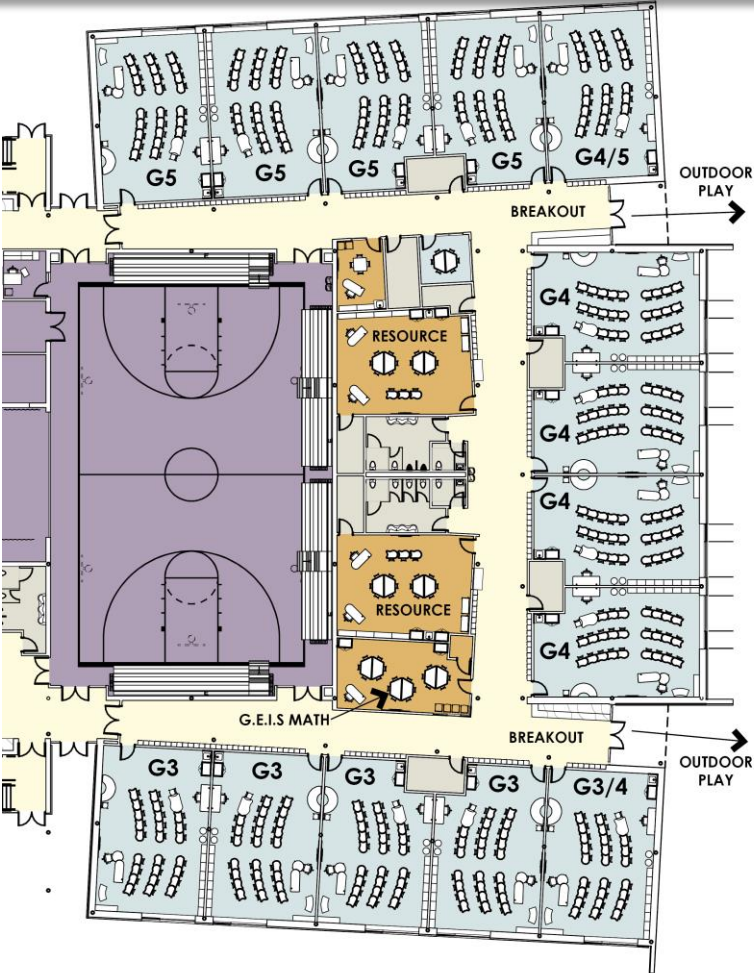


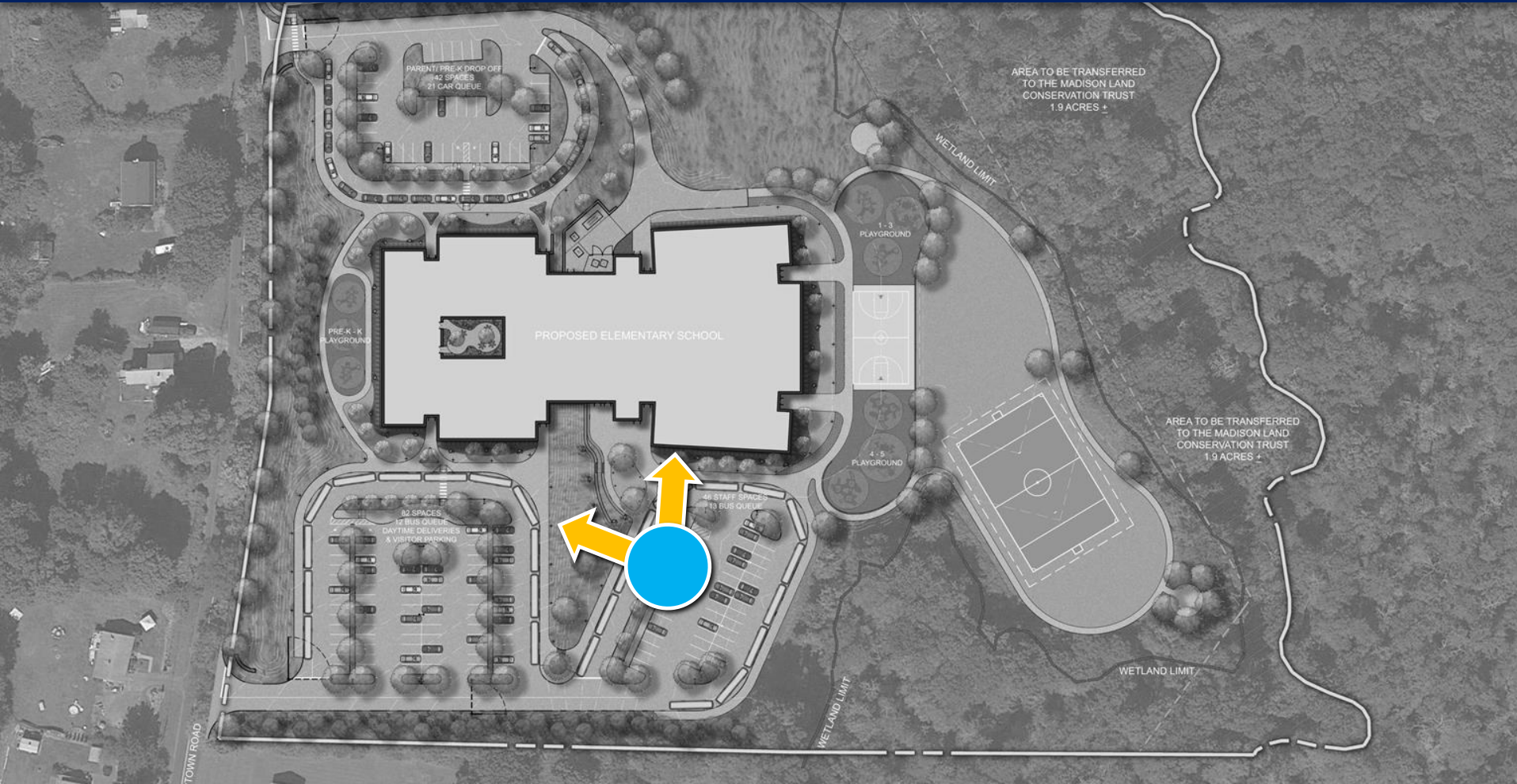
Lower Floor Plan



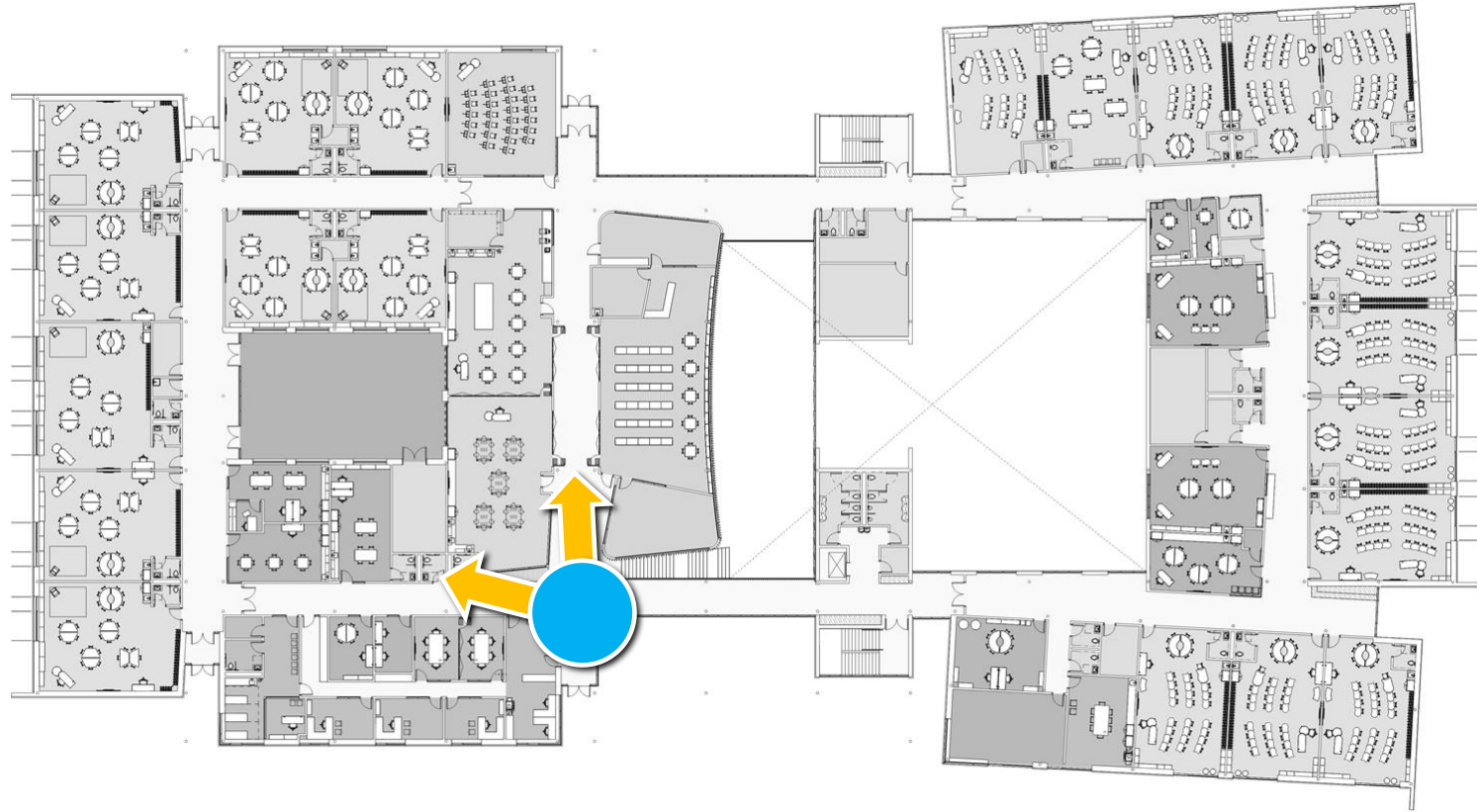


Lower Floor Plan

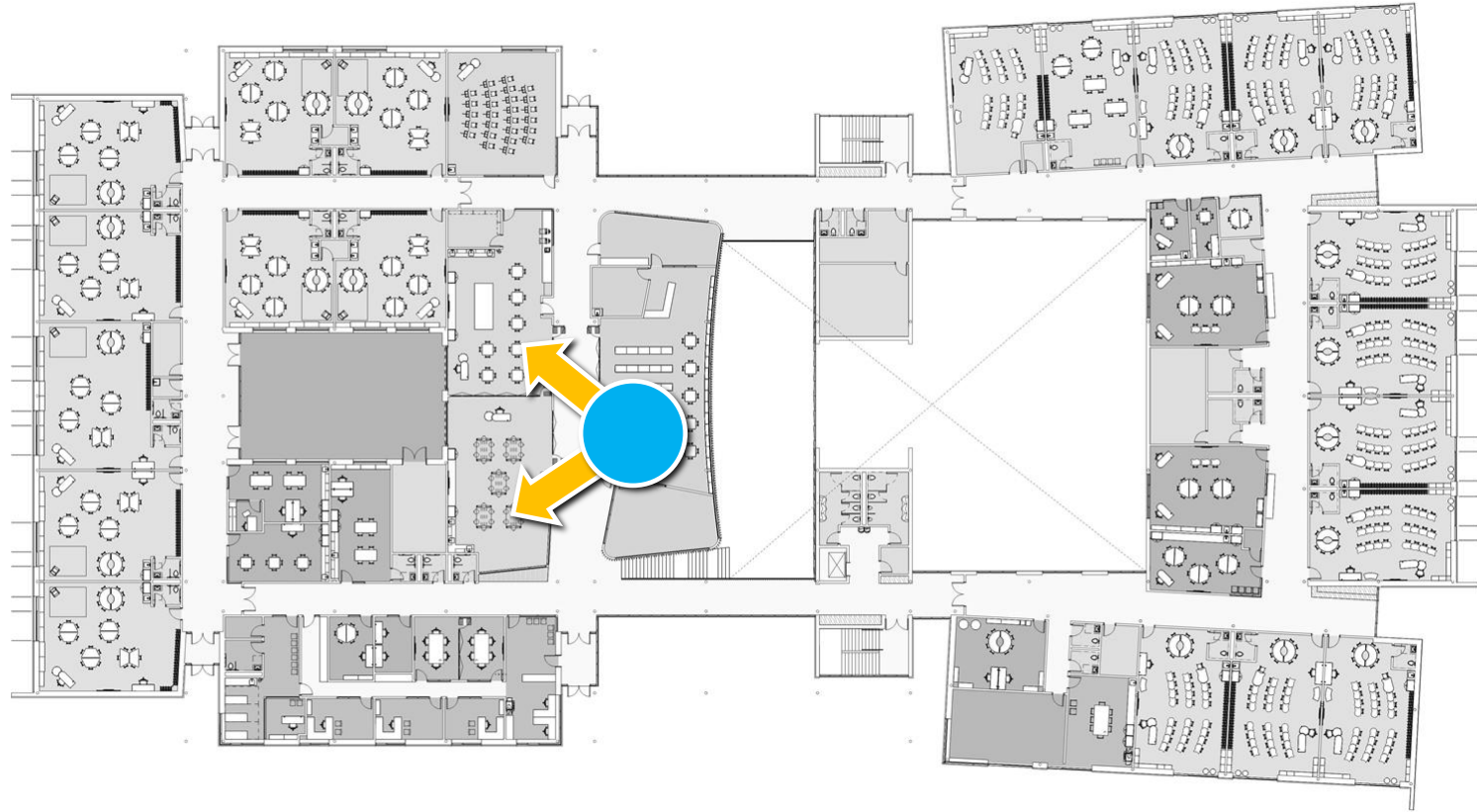
















Tecton
ARCHITECTS

INTERIORS DEVELOPMENT



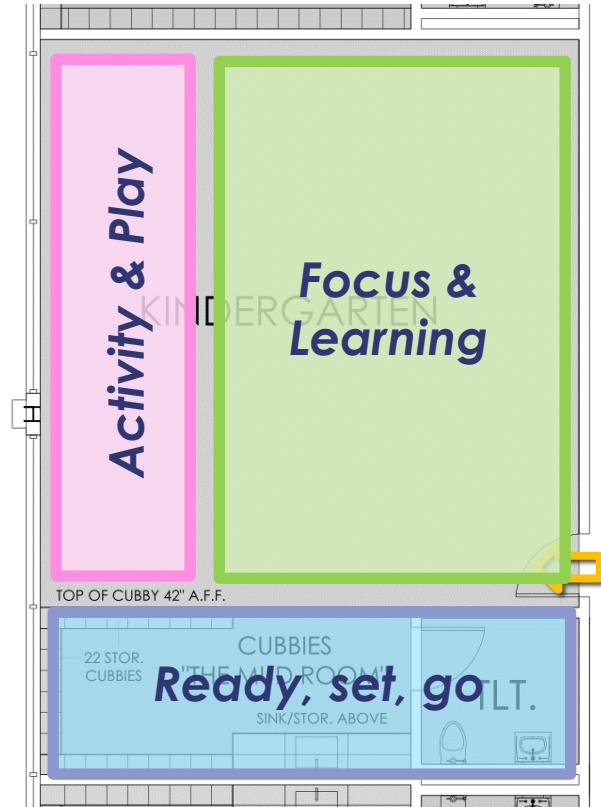
Activity & Play

Focus & Learning



Ready, set, go

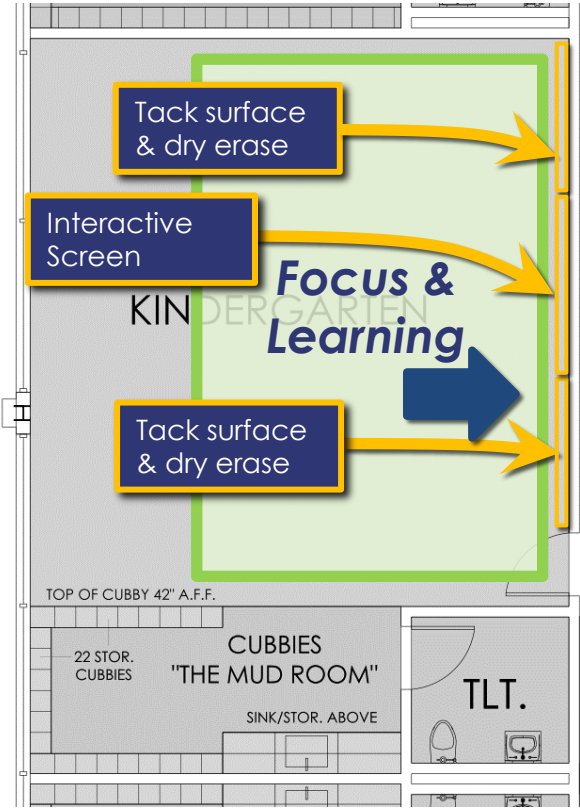




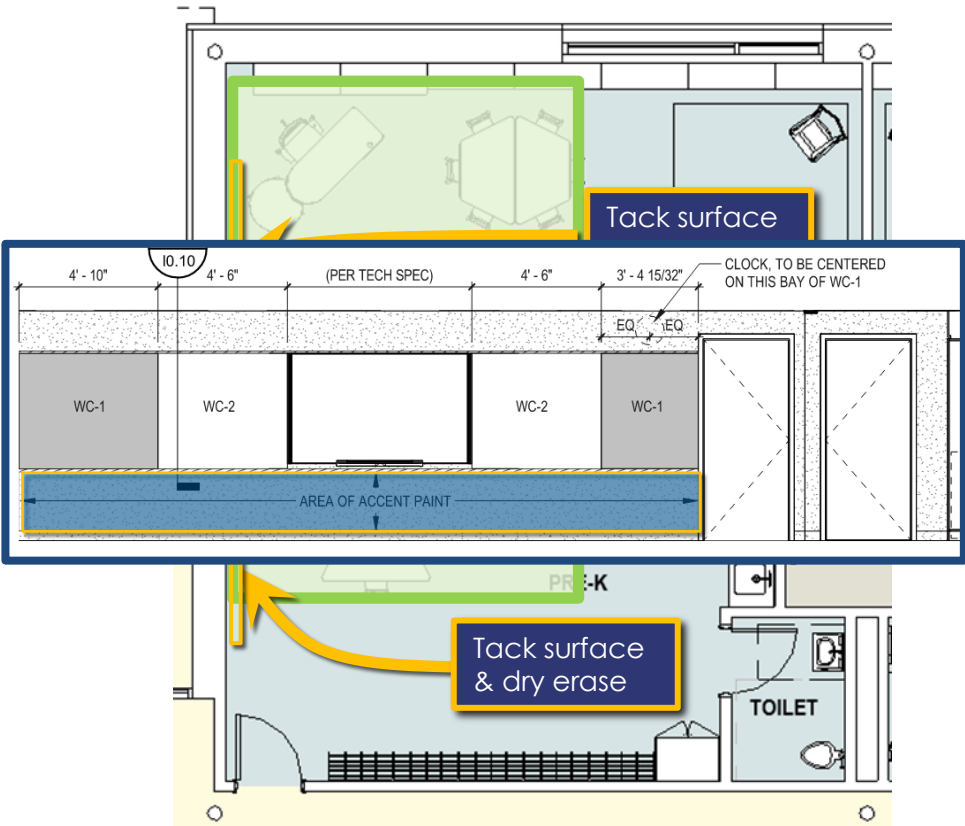
Brown K-1 Wing



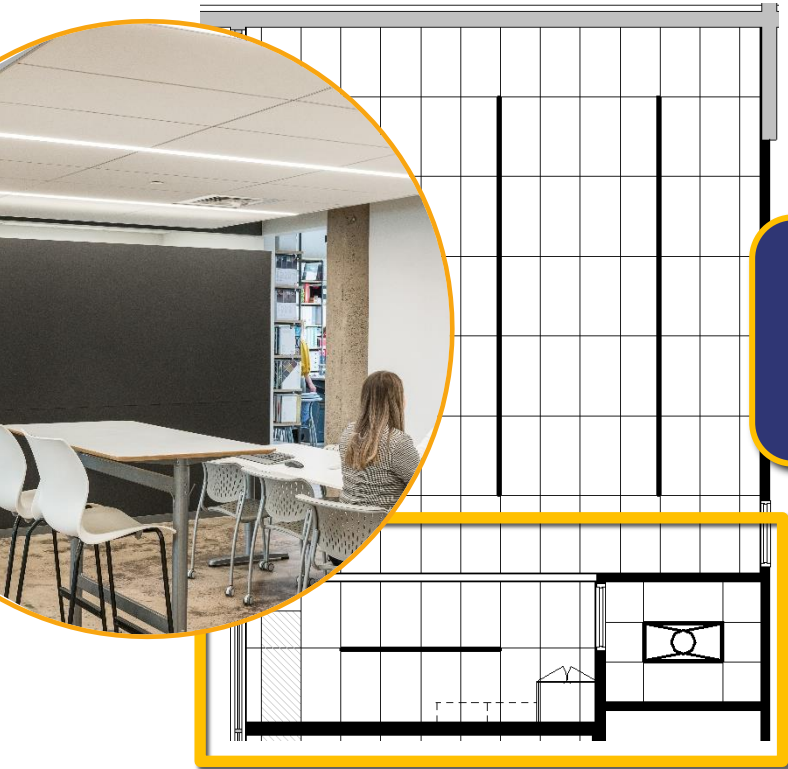
New Elementary



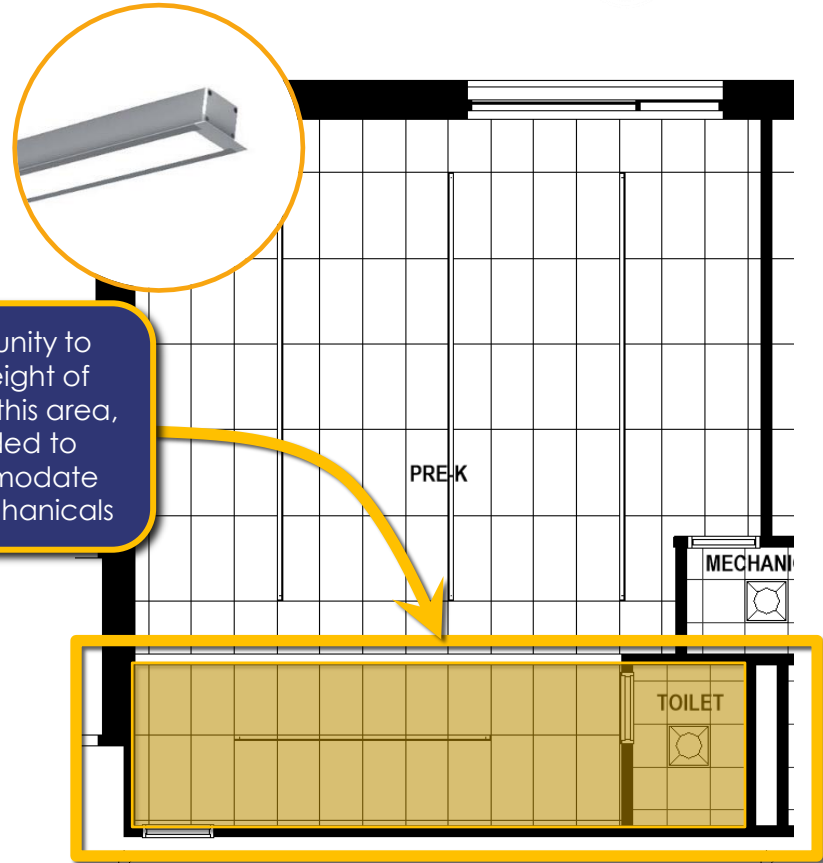
Brown K-1 Wing



New Elementary



Brown K-1 Wing



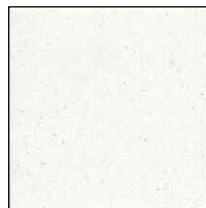
New Elementary



GENERAL WALL PAINT
BENJAMIN MOORE
SIMPLY WHITE



ACCENT WALL PAINT
BENJAMIN MOORE
GRAY OWL



SOLID SURFACE
WILSONART
COCONUT OIL



PLASTIC LAMINATE
WILSONART
FUSION MAPLE

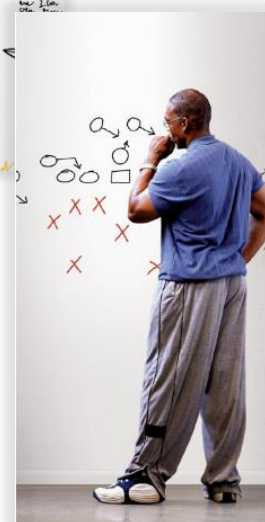


TAC-WALL
KOROSEAL



RESILIENT FLOORING
FIELD
TBD

RESILIENT FLOORING
ACCENT
TBD



















BROWN'S PALETTE IN PROGRESS

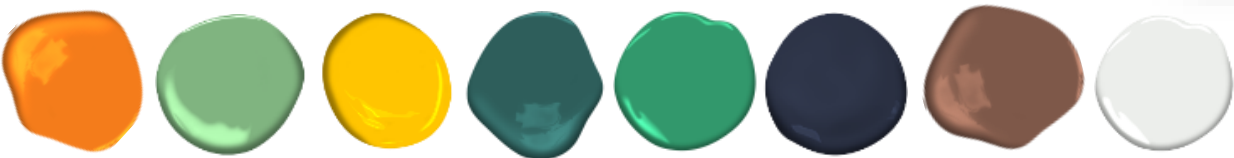










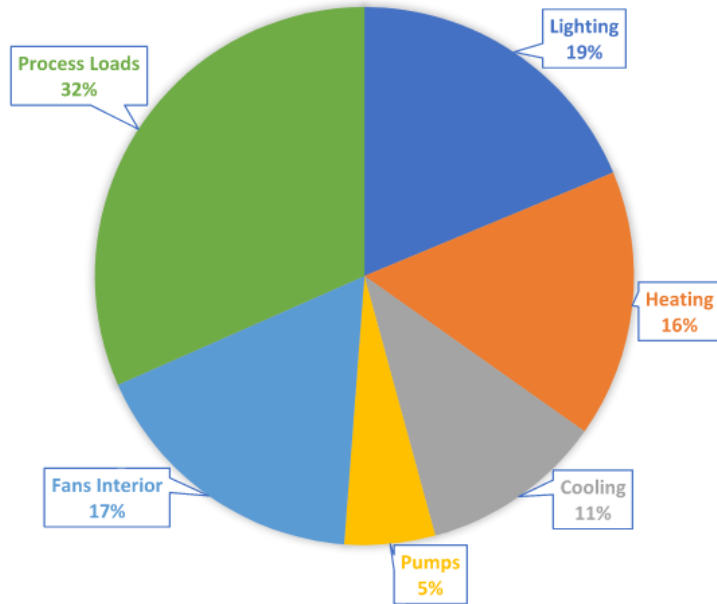




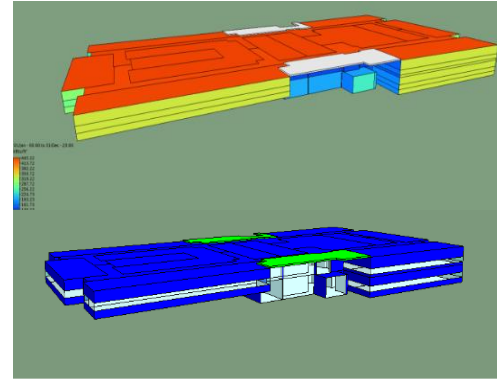
Tecton
ARCHITECTS

SYSTEMS DEVELOPMENT

BASE DESIGN BUILDING- ENERGY



**The EUI of the base building is
22 kBtu/sf/yr**



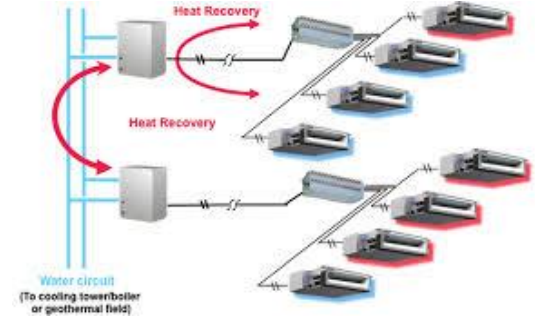
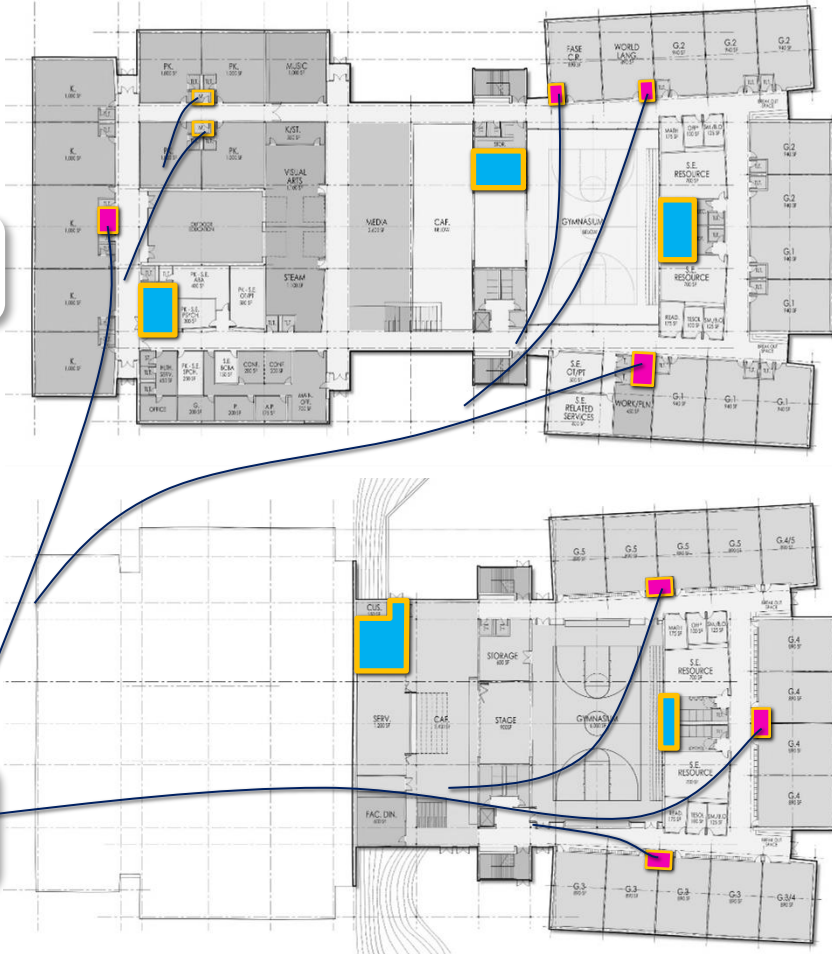
- Space conditioning (Heat/Cool) accounts for 35% of energy consumption and lighting accounts for 19%
- The highest single end use energy consumption is by Process loads (32%) which includes Receptacles, Office and Kitchen equipment
- The EUI of the base building is 22 kBtu/sf/yr
- ASHRAE 90.1 2019 Prescriptive requirements have been used to model the Envelope and Lighting of the building
- Daylight sensors are active throughout the perimeter of the building
- Max savings will be achieved by reduction in Process Loads and Lighting
- The building is modeled to be operating throughout the regular school year (8 am - 4 pm) with 50% occupancy during the summer months (Daily profiles shown in Appendix-A)



Identified & validating
location of major indoor
equipment



Identified & validating
location of locations of
indoor heat pumps,
localized equipment



K2859AWS-134A



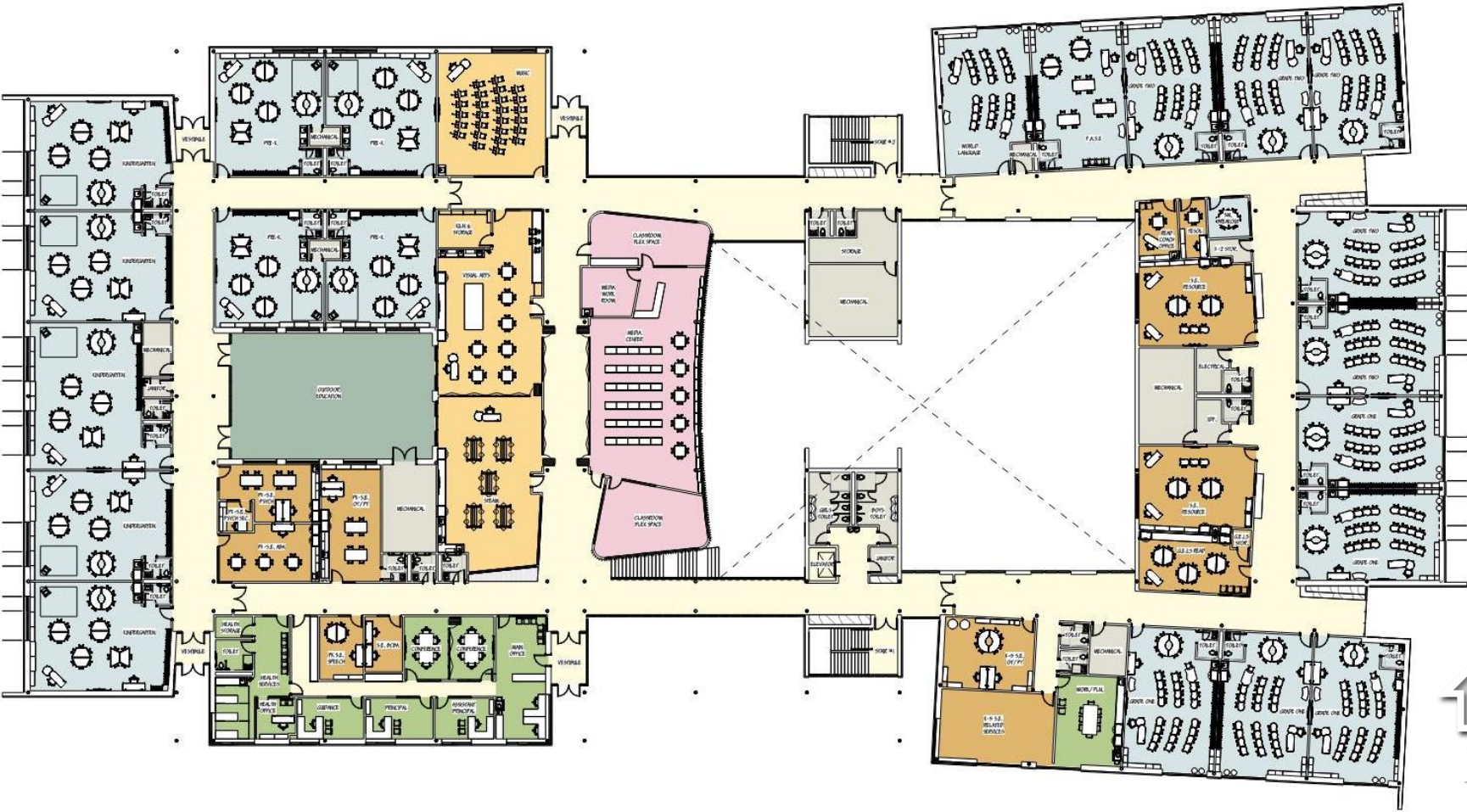
Tecton
ARCHITECTS

ACTIVE LISTENING SESSION!

What we'd like your feedback on:

- **What do you like?**
- **What needs improvement?**
- **For each area, consider...**
 - Is it functioning effectively?
 - Is it adjacent to the right spaces?
 - Is it safe and secure?
 - Does it allow for innovative teaching & learning?







TOWN OF MADISON NEW ELEMENTARY SCHOOL



Tecton
ARCHITECTS

Every Child. Every Day. Leading the Way.

DISTRICT VISION: Prepare all learners to make a unique, positive contribution in a complex, global society. We are committed to fostering the diverse talents and abilities of each and every child in an emotionally and physically safe environment.

Project Objective

To ensure Madison children are able to attend a school that is safe, modern, compliant with current building codes and able to support the educational program.

UPCOMING EVENTS:

9/28 Workshop #1 Visioning Session 6-8pm

Wed.

Location: Polson Middle School Auditorium

A big-picture thinking event to hear the community's goals, aspirations, and priorities for the project.

9/28 Community Survey #1

Wed.

Location: Online; Survey opens 9/28 after Workshop #1 and closes 10/10

A short online survey based on Workshop #1 to gather the community's goals and aspirations for the project and what's most important.

10/21 PRC Meeting 9:30-11am

Fri.

Location: Central Office Town Campus Board Room

11/9 Workshop #2 Concept Workshop 6-8pm

Wed.

Location: Virtual

An event designed to hear and gather the community's preferences as multiple conceptual options are explored.

11/9 Community Survey #2

Wed.

Location: Online; Survey opens 11/9 after Workshop #2 and closes 11/21

A short online survey based on Workshop #2 to gather the community's preferences as multiple conceptual options are explored.

1/18 Workshop #3 Refining the Design 6-8pm

Wed.

Location: Polson Middle School Auditorium

The designation of a preferred community direction as the concepts are narrowed down into one collective vision.

Community Survey #2 will be open soon!

1/18 Workshop #3 Refining the Design 6-8pm

Wed.

Location: Polson Middle School Auditorium

The designation of a preferred community direction as the concepts are narrowed down into one collective vision.

Connect
with us!



Email address:
sbc@madisonct.org



Find us on Facebook:
[@Madison Public Schools](https://www.facebook.com/MadisonPublicSchools)



Project website:
<https://www.madison.k12.ct.us/district/renewal>



Project Email

sbc@madisonct.org



Project Website

madison.k12.ct.us/district/renewal



Social Media

@Madison Public Schools



Tecton
ARCHITECTS

WORKSHOP #2

CONCEPT WORKSHOP

NEW ELEMENTARY SCHOOL (PK-5)

Virtual Zoom Webinar

11.09.2022