



**TAIPEI
EUROPEAN
SCHOOL**



Brief about School





THE SCHOOL

The aim of Taipei European School (TES) is to provide educational excellence, with European culture and values, within the context of Taiwan and local culture.

The School has attracted regional and worldwide attention with its unique model for integrating British, French, German and British High School sections in terms of their curricula, administration, finance, buildings and facilities. Taipei British School, *Ecole Française de Taipei* and *Deutsche Schule Taipei* began around 1990 in response to the needs of expatriate families living in Taipei. The schools soon realised that there was much to be gained by joining forces to establish a combined European school and moved onto a shared campus in 1992. TES is now a single legal entity operating through a non-profit Foundation and comprising the original British, French and German school sections plus a High School established in 2002.

TES has grown steadily since its establishment and now has around 1800 students of some 50 nationalities. TES operates on two campuses with well-appointed, modern facilities and has a total staff of approximately 400.

Teaching staff from TES come predominantly from the UK, France and Germany with smaller numbers from other European countries, Australia, New Zealand, Canada and USA. Taiwanese staff are employed in a variety of positions across school. Class sizes are maximum of 24 in British Sections with smaller classes across the British High School and in the French and German Sections.

TES is well supported by the various foreign institutes as well as the international chambers of commerce and foreign businesses in Taipei.

SCHOOL GOVERNANCE

As a school combining three different curricula plus a High School, TES has a professional, integrated organisational structure in place to provide efficient leadership and management. The executive body of the TES is governed by the Board of Directors (Foundation), which consists of 9 members. These 9 voting members, of whom 5 are current or past parents, are volunteers who are responsible for setting the strategic direction of the school.

The CEO is hired, supported and evaluated by the Board. While the Board sets the overall strategic direction and mission of the school, it delegates the operations and fulfilment of the mission to the CEO.

The CEO is the Executive Principal of the school but delegates significant responsibility to the respective Heads of Section who are line managed and report directly to the CEO. The CEO is also supported by the Leadership Team, covering the Sections and the different administrative functions of the School.

Vision, Mission and Core Values

As the European School in Taipei, we created 'One School' from three schools: British, French and German, to focus on developing European Culture and Values in order to achieve our shared vision and mission.

Vision

To be a flourishing, multilingual and multicultural community of lifelong learners that embraces independence, curiosity and empathy to make a positive difference in local, national and global environments.

Mission

Through world class curricula, Taipei European School cultivates lifelong learners and responsible global citizens who are ready to rise to the challenges of the future. We nurture independence, embrace diversity, and encourage all to “do well by doing good”. We embrace holistic education programmes that value academic accomplishment while prioritising the social and emotional wellbeing of each learner.

Community Values

We expect each member of our community to exhibit

- Respect
- Creativity
- Participation
- Perseverance
- Responsibility

Graduate Attributes

We strive for each graduate to be

- A Lifelong Learner
- Socially Responsible
- A Critical Thinker
- Interculturally Aware
- Independent
- Globally Minded
- Empathetic



THE CURRICULUM

The British, French and German sections follow their respective national curricula up to the age of around 14 years. The British Section broadly follows the National Curriculum of England and Wales from Early Years through to Key Stage 3. The curriculum of the French section is based on the *Programme du Ministère de L'Education Nationale Français*, and students may enter for the *Brevet des Collèges* in class 3eme. The German section follows the curriculum of the state of Thuringen.

Considerable work has been undertaken in recent years to streamline the vertical and horizontal alignment of the curricula across Primary and Secondary as well as across the Sections. Currently, there are progressively arranged joint classes for certain year groups in subjects such as Chinese Language and Culture, physical education, music and art, as well as coordinated breaks, lunch times, co-curricular activities and a joint Student Council. The result is that the students lead the way in demonstrating how friendships and co-operation can flourish across different nationalities and language groups.

From 14 to 18 years of age, the students enter the High School Section, which offers two distinct two-year programmes, taught mainly in English, but with some French and German curricular units. High School students from the age of 14 to 16 follow a number of IGCSE core and optional subjects, culminating in examinations at the end of the second year. The 16 to 18-year-olds undertake the International Baccalaureate (IB) Diploma Programme or the French Baccalauréat, largely as a preparation for university or college entrance. There are plans to offer a greater variety of programmes in the last two years of High School, with some vocational option and the IBCP.





Upcoming Changes

The school is currently undergoing a construction project to relocate our Middle School (11- to 14-year-olds) to a newly constructed building expected to be completed and fitted out by mid-2025. Additionally, an ongoing renovation project will improve facilities to our Upper Secondary Campus. The relocation of the Middle School and the redevelopment of the Upper Secondary Campus will bring opportunities for visionary leaders to join the transformation of the school. The Secondary School will transition to the IB Middle Years Programme (MYP) over a period of five years, from August 2022, to gradually replace the current Key Stage 3 and IGCSE programmes. The existing IBDP programmes will be enriched with opportunities made available with the additional learning spaces and enhanced facilities.

SCHOOL OBJECTIVES

TES's vision is to be a flourishing, multilingual and multicultural community of lifelong learners that embraces independence, curiosity and empathy to make a positive difference in local, national and global environments. We aim to be the school of choice for parents, students and staff who are looking for excellent, accredited education programmes delivered in a variety of languages and who want to join an active and caring community.

TES is one of a kind, being the first school to have French, German and British curricula running in parallel and intertwining. Situated in Taiwan, TES is blessed to be immersed in the traditional Chinese language and cultural environment. The combination allows students to experience and embrace a truly diverse culture and history from around the world, supporting the development of global citizenship. TES is a model for the future, and a great representation of the importance of common values and collaboration in a diverse international world. The School has a strong and inclusive programme of support for children with diverse needs.

TES's student numbers have been steadily growing each year, but the enrolment has now reached approximately 1,800 and effectively the school is now at capacity. In 2011 TES received full accreditation from two of the world's leading accreditation bodies: the Council of International Schools (CIS) and the Western Association of Schools and Colleges (WASC).





THE CAMPUSES

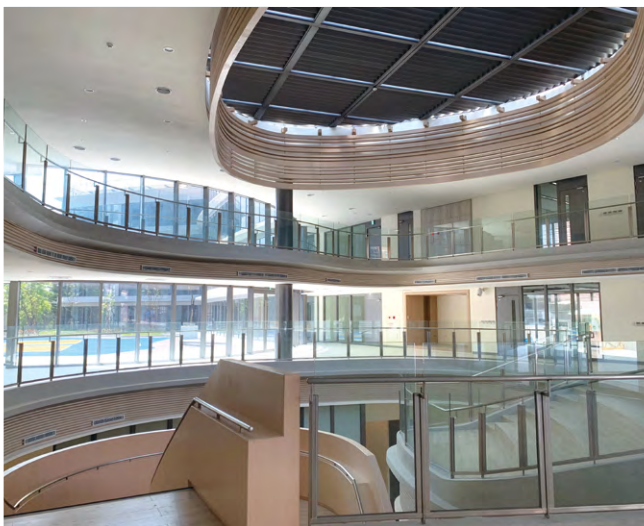
TES operates on two campuses: Swire European Primary Campus in Shilin offers convenient first-class learning spaces for the younger students; and Swire European Secondary campus, located close to the Yang Ming Shan national park, offering spectacular views of the city as well as purpose built facilities. The Primary Campus and Secondary Campus are designed with the age group's most appropriate learning environment in mind.



Primary Campus

Housing Nursery through to upper Primary, the school is split into zones with classrooms and other learning spaces for the needs of each age group. Separate playgrounds for Nursery, Infant, and Primary ensure the children are engaged in age-appropriate recreation. Classroom learning spaces are large with space for the children to learn with enquiry-based and exploratory approaches. Teachers are able to adjust the space to fit different learning goals. An outdoor sports field and indoor gymnasiums provide facilities to support PE classes and a thriving co-curricular activities programme.





Secondary Campus

The campus has 3 buildings which offer fit-for-purpose learning areas. With a new building completed in 2020, Phase 3 offers 2 underground gymnasiums, a weights room, a dance studio, as well as highly advanced classroom spaces where technology is utilised for best practice teaching. There is also a Sports Centre located close by, ensuring a football pitch and tennis courts are available for PE lessons.



CULTURE AND COMMUNITY

The British, French and German Sections combine to be the only school in Taiwan offering a range of national curricula options as well as the High School programmes. As such, we are the natural choice for a more diverse community of parents and students. Our international make up is truly diverse with over 50 nationalities represented. While our school culture reflects the influences of our European heritages: British, French and German, we appreciate and acknowledge all cultures. We have strong connections to the context of our host country and take every opportunity to draw upon the culture of Taiwan in our educational programmes.

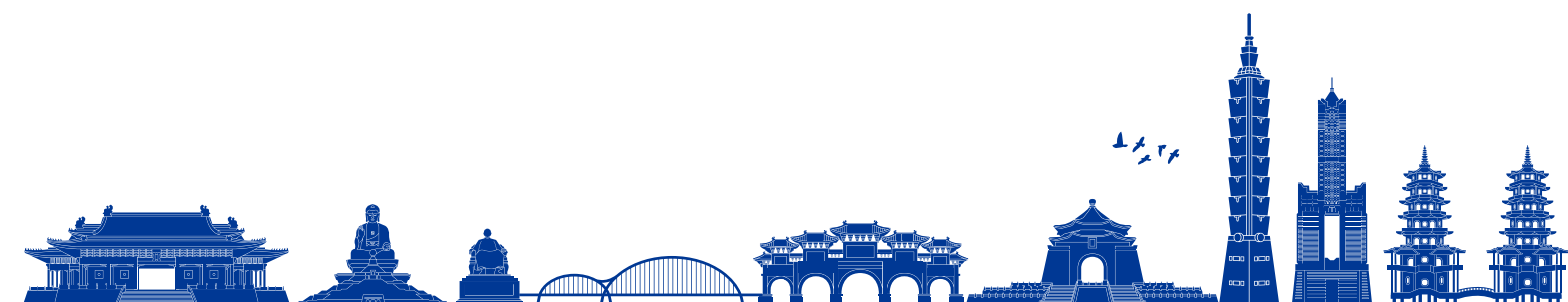


REPUBLIC OF CHINA (TAIWAN)


The Republic of China (Taiwan) is a semi-tropical island in East Asia, one of the world's most exciting and rapidly changing regions. Republic of China (Taiwan) friendliness, clean air, safety, health care system, and the overall quality of life have helped put it above the likes of the USA, Australia, and Hong Kong as one of the best places in the world for expats to live. The people of Taiwan are extremely friendly, helpful, and supportive to foreigners. The expatriate population is smaller than in some other Asian cities, but the community is close-knit and welcoming to newcomers.

Taipei is the political, economic, educational and cultural center of Taiwan and is a developed, vibrant city of around three million people. Described by the International Herald Tribune as the "world's most underrated capital city", it is not especially large by Asian standards and rather less congested and less polluted than most other Asian cities. The city offers many opportunities for recreation, both sporting and cultural. It boasts many theatres, nightclubs, concert halls, museums, and temples,

and it is therefore easy for people to enjoy an active social life. Taipei's eateries, ranging from street stalls to Michelin-starred restaurants are a real culinary treat for foodies. The mountains surrounding the city and nearby coast offer quick and scenic get-aways, and the rest of Taiwan and its surrounding islands are well worth exploring. Taiwan is also ideally situated for excursions to other attractive locations in South East Asia, such as Japan, Thailand, Vietnam, the Philippines and Malaysia.




Swire European Primary Campus

 99 FuGuo Road, ShiLin District
Taipei 11158, Taiwan ROC

 Tel: +886-2-8145-9007

Swire European Secondary Campus

 31 JianYe Road, ShiLin District
Taipei 11193, Taiwan ROC

 Tel: +886-2-8145-9007

 <https://www.tes.tp.edu.tw/>