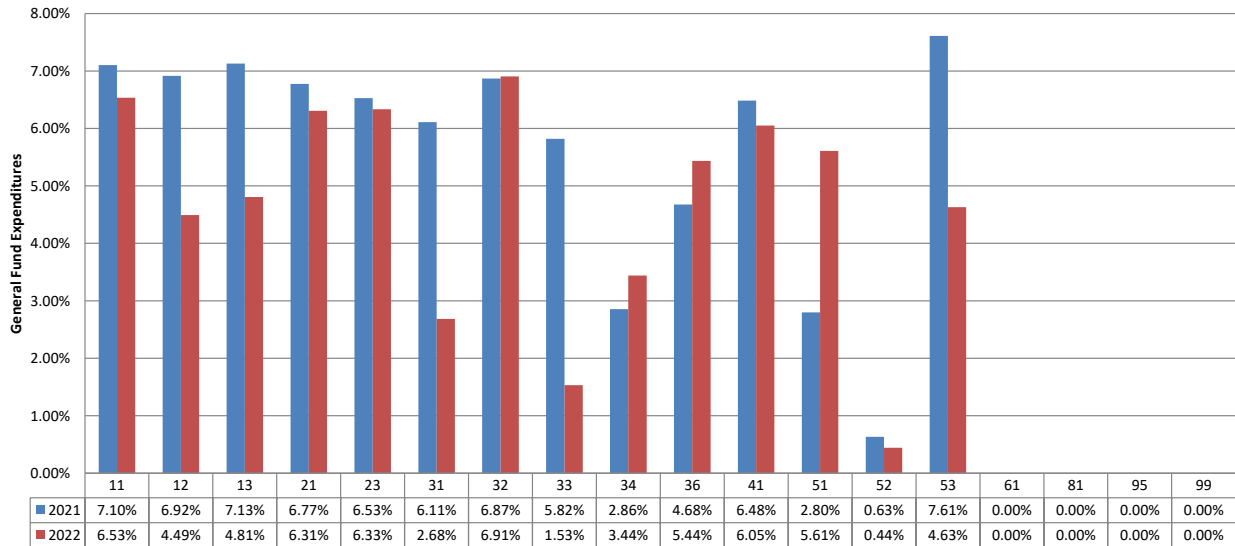


**TOMBALL INDEPENDENT SCHOOL DISTRICT
FINANCIAL COMPARISON REPORT
As of July 31, 2022
General Fund, Food Service, and Debt Service Funds
(AMOUNTS IN \$000)**

	<u>Budget</u>	<u>Actual</u>	<u>% of Budget Realized / Expended</u>
General Fund Revenues			
Property Taxes and P&I	\$ 122,550	\$ 443	0.4%
Co-Curricular Activity	57	4	7.5%
Investment Income	933	3	0.3%
Rents, Fees, Misc.	644	0	0.1%
State Rev.- Foundation Program	57,064	0	0.0%
State Revenue - TRS On-Behalf	9,902	0	0.0%
State Revenue - Other Programs	0	0	0.0%
Federal Revenue Programs	1,350	0	0.0%
Total General Fund Revenues	<u>\$ 192,500</u>	<u>\$ 450</u>	0.2%
General Fund Expenditures by Function			
11 Instruction	\$ 118,112	\$ 7,718	6.5%
12 Instr. Resource & Media Services	2,754	124	4.5%
13 Curriculum Dev./Instr. Staff Development	1,120	54	4.8%
21 Instructional Leadership	5,188	327	6.3%
23 School Leadership	11,282	715	6.3%
31 Guidance & Counseling Services	7,659	206	2.7%
32 Social Work Services	77	5	6.9%
33 Health Services	2,434	37	1.5%
34 Pupil Transportation	8,826	304	3.4%
36 Co-curr./Extracurr. Activities	4,350	236	5.4%
41 General Administration	7,808	472	6.1%
51 Plant Maintenance & Operations	18,047	1,012	5.6%
52 Security & Monitoring	1,554	7	0.4%
53 Data Processing Services	3,350	155	4.6%
61 Community Services	22	0	0.0%
71 Leases	400	0	0.0%
81 Fac. Acquisition & Construction	0	0	0.0%
95 Juvenile Justice Alt. Ed. Program	25	0	0.0%
99 Other Intergovernmental	1,370	0	0.0%
Total General Fund Expenditures	<u>\$ 194,378</u>	<u>\$ 11,372</u>	5.9%

Budget Targets:

This chart represents the percentage actually expended of the appropriations approved by the Board by Function.



TOMBALL INDEPENDENT SCHOOL DISTRICT
 FINANCIAL COMPARISON REPORT
 As of July 31, 2022
 General Fund, Food Service, and Debt Service Funds
 (AMOUNTS IN \$000)

	<u>Budget</u>	<u>Actual</u>	<u>% of Budget Realized / Expended</u>
<u>Food Service Fund Revenues</u>			
Food Sales	\$ 4,818	\$ 3	0.1%
State Revenue - TRS On-Behalf	239	0	0.0%
Federal/State Reimbursement	3,930	0	0.0%
Total Food Service Fund Revenues	<u>\$ 8,987</u>	<u>\$ 3</u>	0.0%
<u>Food Service Fund Expenditures</u>	<u>\$ 8,851</u>	<u>\$ 104</u>	1.2%
<u>Debt Service Fund Revenues</u>			
Property Taxes and P&I	\$ 51,573	\$ 172	0.3%
Investment Income	12	0	0.1%
State Rev.-Foundation Allocation	715	0	0.0%
Sale of Bonds	0	0	0.0%
Total Debt Service Fund Revenues	<u>\$ 52,300</u>	<u>\$ 172</u>	0.3%
<u>Debt Service Fund Expenditures</u>	<u>\$ 52,700</u>	<u>\$ 1</u>	0.0%

**Review additional tabs (worksheets) for reconciliations of amendments to adopted revenue and expenditure appropriations.

