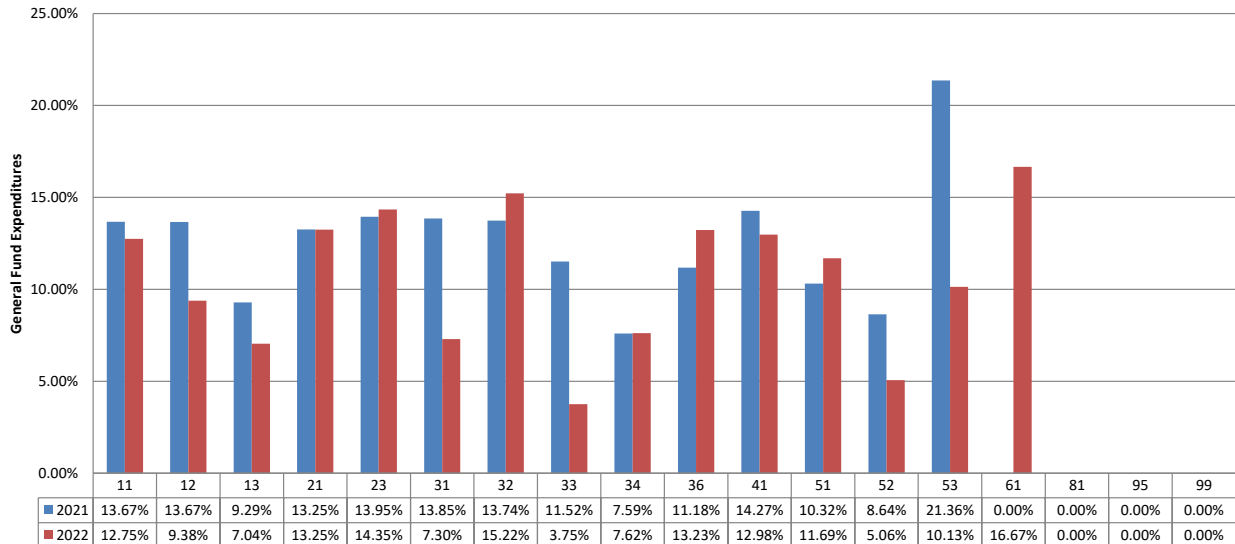


**TOMBALL INDEPENDENT SCHOOL DISTRICT**  
**FINANCIAL COMPARISON REPORT**  
As of August 31, 2022  
General Fund, Food Service, and Debt Service Funds  
(AMOUNTS IN \$000)

	Budget	Actual	% of Budget Realized / Expended
<b>General Fund Revenues</b>			
Property Taxes and P&I	\$ 122,550	\$ 814	0.7%
Co-Curricular Activity	57	7	12.9%
Investment Income	933	135	14.4%
Rents, Fees, Misc.	644	189	29.4%
State Rev.- Foundation Program	57,064	0	0.0%
State Revenue - TRS On-Behalf	9,902	865	8.7%
State Revenue - Other Programs	0	0	0.0%
Federal Revenue Programs	1,350	47	3.4%
<b>Total General Fund Revenues</b>	<b>\$ 192,500</b>	<b>\$ 2,057</b>	<b>1.1%</b>
<b>General Fund Expenditures by Function</b>			
11 Instruction	\$ 118,049	\$ 15,050	12.7%
12 Instr. Resource & Media Services	2,775	260	9.4%
13 Curriculum Dev./Instr. Staff Development	1,262	89	7.0%
21 Instructional Leadership	5,190	688	13.3%
23 School Leadership	11,274	1,617	14.3%
31 Guidance & Counseling Services	7,697	562	7.3%
32 Social Work Services	77	12	15.2%
33 Health Services	2,434	91	3.8%
34 Pupil Transportation	8,831	673	7.6%
36 Co-curr./Extracurr. Activities	4,354	576	13.2%
41 General Administration	7,834	1,016	13.0%
51 Plant Maintenance & Operations	18,582	2,172	11.7%
52 Security & Monitoring	1,569	79	5.1%
53 Data Processing Services	3,342	339	10.1%
61 Community Services	22	4	16.7%
71 Leases	400	0	
81 Fac. Acquisition & Construction	0	0	0.0%
95 Juvenile Justice Alt. Ed. Program	25	0	0.0%
99 Other Intergovernmental	1,370	0	0.0%
<b>Total General Fund Expenditures</b>	<b>\$ 195,087</b>	<b>\$ 23,228</b>	<b>11.9%</b>

**Budget Targets:**

**This chart represents the percentage actually expended of the appropriations approved by the Board by Function.**



TOMBALL INDEPENDENT SCHOOL DISTRICT  
 FINANCIAL COMPARISON REPORT  
 As of August 31, 2022  
 General Fund, Food Service, and Debt Service Funds  
 (AMOUNTS IN \$000)

	<u>Budget</u>	<u>Actual</u>	<u>% of Budget Realized / Expended</u>
<b><u>Food Service Fund Revenues</u></b>			
Food Sales	\$ 4,818	\$ 307	6.4%
State Revenue - TRS On-Behalf	239	35	14.6%
Federal/State Reimbursement	3,930	4	0.1%
Total Food Service Fund Revenues	<u>\$ 8,987</u>	<u>\$ 346</u>	3.8%
<b><u>Food Service Fund Expenditures</u></b>	<u>\$ 8,851</u>	<u>\$ 241</u>	2.7%
<b><u>Debt Service Fund Revenues</u></b>			
Property Taxes and P&I	\$ 51,573	\$ 330	0.6%
Investment Income	12	31	259.0%
State Rev.-Foundation Allocation	715	0	0.0%
Sale of Bonds	0	25,650	0.0%
Total Debt Service Fund Revenues	<u>\$ 52,300</u>	<u>\$ 26,011</u>	49.7%
<b><u>Debt Service Fund Expenditures</u></b>	<u>\$ 52,700</u>	<u>\$ 39,046</u>	74.1%

**\*\*Review additional tabs (worksheets) for reconciliations of amendments to adopted revenue and expenditure appropriations.**



