



AGENDA FOR THE REGULAR BOARD MEETING
Monday, November 7, 2022 - 6 pm
Union Event Center, 12509 N. Market St., Bldg. D, Mead, WA 99021

Webinar Link: mead354-org.zoom.us/j/88591274801
Or Call 669-900-6833 Webinar ID 885 9127 4801

- I. PLEDGE OF ALLEGIANCE**
- II. APPROVAL OF AGENDA (Action)**
- III. APPROVAL OF MINUTES (Action)**
Approval of the Minutes of the Regular Board Meeting of October 24, 2022
- IV. REMARKS FOR THE GOOD OF THE SCHOOLS - Public Comment**
- V. CONTINUING BUSINESS - none**
- VI. NEW BUSINESS**
 - A. Consent Agenda (Action) 1**
Vouchers, Personnel Actions, Extra-Curricular and Supplemental Contracts
 - B. Resolution 22-10 (Action) 2**
Transferring Territories in Director Districts
(Presented by: *Heather Ellingson, Chief Financial Officer*)
 - C. Student Travel Proposal (Action) 3**
Mead High School Girls Basketball
(Presented by: *Darren Nelson, Director Secondary Education*)
 - D. Resolution 22-07 Revision (Action) 4**
2022/23 School Nutrition Fees
(Presented by: *Kim Elkins, Nutrition Services Director*)
 - E. Award Supplemental Prime Vendor Contract (Action) 5**
(Presented by: *Kim Elkins, Nutrition Services Director*)
- VII. REPORTS**
 - A. 2021/2022 Year End Financial Report 6**
(Presented by: *Heather Ellingson, Chief Financial Officer*)
 - B. Financial Report for the month of September 2022 7**
(Presented by: *Heather Ellingson, Chief Financial Officer*)
 - C. Superintendent's Report**
- VIII. ADJOURN**

Public Participation – Policy 1430

The Board recognizes the value of public comment on educational issues and the importance of involving members of the public in its meetings. Therefore, the opportunity for individuals (staff, guests and/or district residents) to express an opinion is provided at the beginning of School Board meetings. Per Policy 1430 public comment should relate to agenda items. Those wishing to speak must sign-in with: name, address, phone number and topic being addressed. Sign-in must be done prior to the beginning of the meeting before the gavel has dropped. If a group wishes to speak, it is recommended they choose a spokesperson to speak on behalf of the group. The Board President will recognize each speaker and invite him/her to step up to the podium. Comment time is limited to three (3) minutes. Individuals making public comments are asked to refrain from any inappropriate behavior, including but not limited to: clapping, shouting and/or sarcastic, vulgar or disrespectful language or actions. The School Board will not respond to public comments during the meeting. The board may express regret regarding the speaker's concerns and thank them for their contribution. This allows the Board time to confer with district staff and gain valuable knowledge before determining whether or not to more fully respond to a speaker's comments.

Individuals with disabilities who may need a modification to participate in a meeting should contact the Superintendent's office no later than three days before a regular meeting and as soon as possible in advance of a special meeting so that arrangements for the modification can be made.



**Minutes from the Regular Meeting of the Board of Directors
Monday, October 24, 2022**

The Board of Directors held a Regular Board Meeting on Monday, October 24, 2022. This meeting was held in-person and virtually via a Zoom link posted on the Mead School District website. Directors Denholm, Olson, Cannon and Gray were present. Director Burchard was excused. Also attending were Superintendent Shawn Woodward, Chief Financial Officer Heather Ellingson and Assistant Superintendents Heather Havens and Jared Hoadley.

I. Pledge of Allegiance

The meeting began with Vice-President Denholm asking all to rise for the Pledge of Allegiance.

II. Approval of Agenda

Director Olson made a motion to approve the meeting agenda, as presented. Director Gray seconded the motion. The motion carried unanimously.

III. Approval of Minutes

Director Cannon made a motion to approve the minutes of the October 10, 2022, Regular Board Meeting, as presented. Director Gray seconded the motion. The motion carried unanimously.

IV. Remarks for the Good of the Schools – Public Comment

Noting there were no community members/individuals present who signed-up to speak on agenda topics, Vice-President Denholm opened the floor for board/staff comments.

Board/Staff Comments

Director Gray expressed her appreciation for the upcoming (November 10th) Special Education Information Night where families will have the opportunity to ask questions and learn more about services available in the Mead School District.

Director Olson shared it is a big week for high school athletics noting in particular the *Cat Fight* volleyball match (Mt. Spokane High School at Mead High School) on Thursday and *Battle of the Bell* on Friday at Union Stadium.

Darren Nelson, Director of Secondary Education, shared the following upcoming, and recently completed, events/contests for high school and middle school athletics and activities:

Football – *Battle of the Bell*, Friday, October 28, 7 pm @ Union Stadium

Mt. Spokane High School is undefeated. Mead High School has only one loss. Winner will be the GSL Champion and #1 3A seed to State.

Volleyball – *Cat Fight*, Thursday, October 27, 7 pm @ Mead High School

Both Mt. Spokane and Mead High are undefeated. Winner will be the GSL Champion and #1 seed heading into postseason.

Girls Soccer

Both Mt. Spokane and Mead High have qualified for Districts. Mead High is the #2 seed and will play Cheney at Union Stadium on October 25 @ 5 pm. Mt. Spokane is the #6 seed and will travel to Walla Walla for a 3:30 pm game on October 25.

Boys & Girls Cross-Country

Mead High Girls and Mt. Spokane Boys are GSL Champions. Districts takes place in Walla Walla on Saturday, October 29.

Slowpitch Softball

Mt. Spokane is the #2 seed and Mead High is the #7 seed heading into the State tournament taking place Friday (October 28) and Saturday (October 29) in Yakima.

Marching Band

Mt. Spokane wrapped up their season earning a 3rd place overall finish, and the *Best Music* Caption Award, at the recent Puget Sound Festival of Bands. Mead High will wrap up their season by traveling to Hillsboro, Oregon, to compete on October 29 at the Liberty Marching Arts Challenge. Mead High placed 3rd overall at the recent Washington State University Marching Band Championships.

Fall Theatre Productions

After Veterans Day, the Mt. Spokane High School Theatre Arts Department will perform *A Christmas Carol*. Prior to Veterans Day, the Mead High School Theatre Arts Department is performing *Leaving Iowa*.

Choir

Northwood, Highland and Mt. Spokane each had concerts the week of October 17. Mead High School will host a concert on October 25, 7 pm. Mountainside will host a concert at Mt. Spokane on October 27, 7 pm.

Orchestra

Spooktacular takes place this evening (October 24) at Mead High School. Mt. Spokane and Mountainside are taking part in a combined concert this evening (October 24) at Mt. Spokane.

Band

All three middle schools are holding band concerts at their respective locations on October 26, 7 pm.

Vice-President Denholm thanked Mr. Nelson for this update, noting he likes hearing about the many athletic contests, music events and drama productions taking place throughout the district. It is his hope this sort of report will be presented at board meetings on a regular basis.

V. Continuing Business - none

VI. Public Hearing – Proposed/Updated Director District Boundaries

Chief Financial Officer Heather Ellingson, in accordance with state law, presented proposed new Director District Boundaries for public comment. This is a process that takes place every ten years following receipt of new/updated census data.

The population of the Mead School District, using 2020 US Census data, is 61,433, an increase of 10,514 since 2010. With growth of approximately 20% there are significant enough variances between the population in current director districts to warrant reconfiguring boundaries to, as nearly as possible, have an equal number of individuals residing in each director district.

In her presentation Ms. Ellingson shared the redistricting criteria, guidance and process used by Sammamish Data Systems (outside organization contracted to do this work) to redraw boundaries. The ideal population for each director district, based on a total population of 61,433, is 12,287. The presented boundary proposal ranges from a high of 12,336 (district #3) to a low

of 12,226 (district #1). It was noted that in drafting boundaries adjustments can only be made by moving entire census blocks. It is not permissible to move individual homes.

Ms. Ellingson noted that in preparing the proposed new boundaries Sammamish Data Systems was provided with board member residential addresses to assure that each board member is living within the director district boundary they represent. Ms. Ellingson noted, in comparing current boundaries to proposed boundaries, that there is very little change between the two.

There are no changes to the procedures involved in running for office or who votes for each open position. To run for office an individual must live within the boundary of the director position they wish to represent and the entire Mead community votes for all positions.

Proposed boundaries are posted on the Mead School District homepage and, as noted by Director Cannon, by zooming in street names are visible. Approval of the new director district boundaries will be brought forward as an action item at the November 7, 2022, board meeting.

There were no public comments on the presented proposed/updated Director District Boundaries.

VII. New Business

**A. Policy 1105 Revision
Director District Boundaries**

Chief Financial Officer Heather Ellingson presented a revision to Policy 1105, Director District Boundaries, for board consideration. This policy, that replaced Policy 1230 was adopted on January 29, 2007. The policy notes it is the responsibility of the Board of Directors to establish Director District Boundaries and to redistrict within eight months under a number of circumstances including receipt of new federal census data.

The presented revision, reducing the days from 45 to 15 for a registered voter in the district to challenge adoption of new Director District Boundaries, brings the policy into compliance with a recent change to RCW 29A.76.010. A copy of this RCW was provided to board members.

Director Cannon made a motion to approve the revision to Policy 1105, Director District Boundaries, as presented. Director Olson seconded the motion. The motion carried unanimously.

B. Consent Agenda

Noting it is good to see the hiring of so many bus drivers, Director Cannon made a motion to approve the Consent Agenda, as presented. Director Gray seconded the motion. The motion carried. Director Olson abstained. (An Extra-Curricular stipend included as a part of the Consent Agenda is being paid to a relative of Director Olson.)

Consent Agenda

1. Hired Certificated Personnel:

Holly Chase	Highland	Cert	.2 FTE Continuing teacher in addition to .6 FTE Continuing effective 8/30/22
Michael Caraballo	Shiloh Hills	Cert	1.0 FTE Continuing Transitional K teacher effective 9/26/22
Susanna Stutzman	Highland	Cert	.6 FTE Continuing English teacher effective 9/30/22
Allison Moyer	Evergreen	Cert	.4 FTE Leave Replacement Combo Support teacher 22/23 school year effective 10/3/22
Emily Moman	Midway	Cert	.2 FTE Leave Replacement Combo Support teacher 22/23 school year effective 10/11/22

2. Hired Classified Personnel:

Shelia Jalbert	Mead HS	Class	5.75 hrs/day Para Ed effective 9/20/22
Stephanie Butler	Technology	Class	8 hrs/day CTE//Tech Support Specialist (no longer at Mt. Spokane) effective 10/18/22
Edward West	Custodial	Class	8 hrs/day Custodian II effective 9/30/22
Kyle King	Custodial	Class	8 hrs/day Custodian II effective 10/5/22

Shawn Phillips	Special Services	Class	6 hrs/day Para Ed (leave replacement) 22/23 school year effective 9/19/22
Jillian Madsen	Transportation	Class	8 hrs/day Bookkeeper effective 10/3/22
Tamara Korth	Shiloh Hills	Class	8 hrs/day SOAR Program Director (1 year position . . . 10/10/22 - 6/30/23)
James Kramer	Transportation	Class	5.25 hrs/day Bus Driver effective 9/6/22
John Gillis	Transportation	Class	5.25 hrs/day Bus Driver effective 9/6/22
Wayne Kuntz	Transportation	Class	4.0 hrs/day Bus Driver effective 10/3/22
Wayne Turner	Transportation	Class	4.0 hrs/day Bus Driver effective 10/4/22
Kristopher McKethen	Transportation	Class	4.0 hrs/day Bus Driver effective 10/3/22
Joseph Randall	Transportation	Class	4.0 hrs/day Bus Driver effective 10/5/22
Monique Palm	District Office	Class	4.0 hrs/day Public Records Specialist effective 10/5/22
Loree Swegle	Business Services	Class	8 hrs/day Accounting Specialist effective 10/24/22 (no longer working as an HR Specialist)

3. Hired Certificated Substitutes:

Sara Ferris	Christine Ulmer	Dana Batt	Betty Todd
Brittany Anderson	Summer Smith		

4. Hired Classified Substitutes:

Anna Downs	Suzanna Canwell	Samuel Wygren	Brianna Busch
Tasha Marchand	Lindsey Bench	Heidi Hogan	Georga Clark

5. Approved AP Vouchers for General Fund, Capitol Projects, Private Purpose Trust & ASB.

Vouchers audited and certified by auditing officers as required by RCW 42.24.080, and those expense reimbursement claims certified as required by RCW 42.24.090, have been recorded on a listing which has been made available to the Board. As of this day, **October 24, 2022**, the Board, by a unanimous vote does approve for payment the vouchers included in the above referenced list and further described as **Warrant Numbers 108367 to 108582** in the following amounts:

<u>Fund</u>	<u>Amount</u>
General Fund - AP	\$ 711,276.64
General Fund - PR	173,490.73
ASB Fund	143,433.26
Capital Projects Fund	14,700.00

6. Approved Extra-Curricular, Supplemental & Co-Curricular Contracts.

7. Accepted the Following Donation:

\$1,000 from Emily Hatcher to Mead High School Cybe Security Club

8. Approved Requests for Retirement/Resignation:

Jessica Maxwell	Highland	Cert	Resignation effective 12/2/22 (teacher)
Ena O'Connor	Nutrition Services	Class	Resignation effective 10/19/22 (Cook III . . . remains employed as a Bus Assistant)
Michelle Pilimai	Prairie View	Class	Resignation effective 10/21/22 (Para Ed)
Tonya Riggan	Shiloh Hills	Class	Resignation effective 10/28/22 (Para Ed)

9. Approved Request for Unpaid Leave (i.e., parenting, medical Good of the District, etc.):

Alexandrea Hunt	Mountainside	Class	1.5 hrs M/T/Th/F through 6/16/23 (employed as a 6.15 hrs/day Para Educator)
-----------------	--------------	-------	---

**C. Student Travel Proposal
Mead High School Yearbook**

Darren Nelson, Director of Secondary Education, presented for board consideration a travel request from the Mead High School Yearbook staff (eight members) and advisor Makena Busch, plus one additional chaperone, to travel to St. Louis, Missouri, November 10-13, 2022, to attend the JEA Journalism National Convention. This is an opportunity for students to attend convention sessions on various journalism and yearbook topics, compete in national competitions, bond with fellow Mead High School Yearbook students and meet professionals in the journalism and publishing community.

This trip is very similar to the trip approved at the October 10, 2022, board meeting for the Mt. Spokane High School Yearbook staff. Like the Mt. Spokane trip, the estimated per student cost is \$660 with fundraising opportunities available. The remaining costs associated with the trip will be covered by the Mead High School Yearbook ASB budget. Mr. Nelson additionally noted

the proposal takes into consideration House Bill 1660 and that money will not be an attendance issue for any student who qualifies under the provisions of this bill.

Students will miss one day of school (November 10) and Ms. Busch will need a substitute teacher for that day.

In response to a question from Vice-President Denholm, Mr. Nelson assured students are chaperoned at all times and are not permitted to be out alone in the evenings.

Director Cannon made a motion to approve the request from Mead High School Yearbook to travel to St. Louis, Missouri, November 10-13, 2022, to attend the JEA Journalism National Convention, as presented. Director Olson seconded the motion. The motion carried unanimously.

VIII. Reports

A. Superintendent's Report

Topics covered in Superintendent Woodward's report included the following:

#1 - In providing an update on the new Transitional Kindergarten program at Shiloh Hills Elementary School, Superintendent Woodward shared that if you are "feeling stressed out" visiting a Transitional Kindergarten classroom will relieve that stress. Shiloh Hills started the year with one classroom and, because of demand, a second classroom has been added. There are currently 33 students enrolled in Transitional Kindergarten at Shiloh Hills. This program serves students who do not have access to other pre-K programs. The district is confident being enrolled will make a big difference for these students moving forward. Based on need, plans include expanding the program to other schools next year. For any board member wishing to visit a Transitional Kindergarten classroom, Superintendent Woodward asked that they let him know so he can make arrangements.

#2 - Superintendent Woodward referenced the upcoming (October 25th) Priority Spokane meeting invitation he forwarded to board members noting he will be in attendance at the event. Working collaboratively with a variety of stakeholders, including school districts, the organization's current priority is to reduce the harmful impact of trauma and violence on children and families across Spokane County.

#3 - Following up on the webpage updates designed to provide parents with easy access to resources/information on what children are learning in schools, that was shared at the last board meeting, Superintendent Woodward noted lots of progress has been made in the past two weeks. Within the next two weeks a link to 5th grade sex ed curriculum will be available with other grade levels to follow.

#4 - Superintendent Woodward shared the possibility of the entire board scheduling formal school visits. Three visits, one to an elementary school, middle school and high school, could be arranged with the first visit taking place in January. Each visit, that would be considered an official board meeting, would begin with a meeting in the library with building administration, next would be visits to 4-5 classrooms, followed by reconvening in the library where the board would have the opportunity to ask questions. It is anticipated each school visit would last approximately two hours. All board members expressed interest in participating in this type of official school board event.

IX. Adjourn

The meeting was adjourned at 6:30 pm.

President

Secretary

MEAD SCHOOL DISTRICT

Board Meeting of November 7, 2022

New Business

VI.A.

Agenda Item: Consent Agenda

Background:

The Consent Agenda contains items that are normal and customary in the operation of the school district.

Fiscal Impact:

The Consent Agenda items have no significant impact beyond the adopted budget. Expenditure or employment requests that exceed budget authorization should not appear as a consent item.

Staffing Implications:

None, other than the personnel recommendations, as presented.

Other Considerations:

None

Recommendation:

Approval of the Consent Agenda, as presented, is recommended.

Consent Agenda
Regular Board Meeting of November 7, 2022

1. Hire Certificated Personnel:

Karly Wittkopp	Mead High	Cert	.8 FTE Continuing Math teacher effective 9/28/22
Cheyenne Wolf	Mead High	Cert	1.0 FTE Continuing ELA/SS teacher effective 10/17/22
Angela Thedens	Creekside	Cert	.2 FTE Leave Replacement Music Teacher (in addition to .5 FTE Continuing) 22/23 school year effective 10/17/22

2. Hire Classified Personnel:

Carter VandenDriessche	Custodial Services	Class	8 hrs/day Custodian II effective 10/20/22
David Hutson	Transportation	Class	4 hrs/day Bus Driver effective 9/19/22
Heather Ruiz	Evergreen	Class	6.25 hrs/day Para Ed effective 10/18/22
Angel Baumann	Colbert	Class	6.10 hrs/day Para Ed effective 10/12/22
Jennifer Noonan	Colbert	Class	6.10 hrs/day Para Ed effective 10/13/22
Jennifer Thomas	Mt. Spokane	Class	8 hrs/day Data Processor effective 10/20/22
Naysha Richmond	Mead High	Class	6.15 hrs/day Para Ed effective 10/17/22
Tasha Marchand	Student Services	Class	6.25 hrs/day Classified Nurst effective 10/25/22

3. Hire Certificated Substitutes:

Jennifer Tourgee | Jessica Scruggs | Jacobe Valenzuela |

4. Hire Classified Substitutes:

Heidi Hogan	Michael Ferrell	Shirley Schrawyer	Alexandria Wiltse
Mari Heaton	Danika Enfield	Robert Meilke	Charles Oliver

5. Approve AP Vouchers for General Fund, Capitol Projects, Private Purpose Trust and ASB, as attached.

6. Declare Items (attached) as Surplus.

7. Accept the Following Donation:

- \$750 from Bloomsday Road Runners to Mead High School Cheerleaders
- \$300 from Schweitzer Engineering Labs to Prairie View Elementary
- 750 reading books (approx. value \$4,500) from Ella Fitzgerald Charitable Foundation to Mead Student Resource Hub
- \$1,500 from CBRE Project Management to Mead Student Resource Hub
- \$3,000 from Dorian Photography to Mead Student Resource Hub
- \$750 from Mead Bus Driver Union to Mead Student Resource Hub

8. Approve Request for Unpaid Leave (i.e. parenting, medical, Good of the District, Etc.):

Tasha Marchand	Colbert	Class	Jan 5-6, 2023
Katie Patry	Special Services	Cert	2 nd Semester 22/23
Melissa Kehr	Special Services	Cert	2 nd Semester 22/23

9. Approve Retirements and Resignations:

Carter VandenDriessche	Custodial Services	Class	Resignation effective 11/9/22 (Custodian II)
Colleen Ferguson	Northwood	Class	Resignation effective 10/31/22 (Cook III)
Robert Hess	Transportation	Class	Retirement effective 12/31/22 (Bus Driver)
Angela Puri	Mountainside	Class	Resignation effective 12/16/22 (Para Ed)

GENERAL FUND

Mead School District No 354

Payee Listing

Fiscal Year: 2022-2023

Criteria:

Bank Account: SPOKANE COUNTY TREASURER
153607390207

Voucher: 1041

Starting Check Number: 108584

Check #	Date	Payee	Amount
108584	10/28/2022	ACCESS INFORMATION PROTECTED	\$4,233.26
108585	10/28/2022	ACE HARDWARE	\$14.69
108586	10/28/2022	ACTION SPORTSWEAR	\$626.88
108587	10/28/2022	ADVANCED PAGING & COMMUNICATIONS INC	\$288.59
108588	10/28/2022	AI-MEDIA TECHNOLOGIES LLC	\$1,518.00
108589	10/28/2022	AMAZON	\$1,168.97
108590	10/28/2022	AMERIGAS PROPANE LP	\$979.60
108591	10/28/2022	APPLE COMPUTER INC	\$334.45
108592	10/28/2022	AVAIL HOME HEALTH INC	\$2,450.00
108593	10/28/2022	BARGREEN ELLINGSON INC	\$852.03
108594	10/28/2022	BLUUM OF TEXAS LLC	\$424.71
108595	10/28/2022	BLX GROUP LLC	\$750.00
108596	10/28/2022	BRYSON SALES & SERVICE OF WASHINGTON	\$3,246.16
108597	10/28/2022	CO ENERGY	\$586.66
108598	10/28/2022	DANSIE CURRICULUM DESIGN LLC	\$27.00
108599	10/28/2022	DIONNE, THOMAS	\$980.46
108600	10/28/2022	E3 DIAGNOSTICS	\$2,019.99
108601	10/28/2022	ESD 101	\$1,402.22
108602	10/28/2022	FIELDTURF USA, INC	\$1,095.00
108603	10/28/2022	FIRST CHOICE SERVICES	\$179.16
108604	10/28/2022	FIRST IMPRESSIONS	\$917.78
108605	10/28/2022	FRANKLIN PARK URGENT CARE CENTER	\$350.00
108606	10/28/2022	FUNK, SHELBY	\$25.00
108607	10/28/2022	GERL, ANGELLE	\$35.00
108608	10/28/2022	HOFFMAN MUSIC CO	\$234.25
108609	10/28/2022	HOME DEPOT CREDIT SERVICES	\$618.18
108610	10/28/2022	HOME DEPOT PRO	\$515.64
108611	10/28/2022	HORIZON AUTOMATIC RAIN COMPANY DBA	\$502.59
108612	10/28/2022	HUMPHREY, ALISHA	\$30.00
108613	10/28/2022	INTERSTATE ALL BATTERY CENTER	\$105.75
108614	10/28/2022	JAE ENTERPRISES LLC	\$189.72
108615	10/28/2022	JOHNSTONE SUPPLY	\$581.15
108616	10/28/2022	JW PEPPER	\$212.36
108617	10/28/2022	KCDA	\$3,897.80
108618	10/28/2022	LAWSON PRODUCTS INC	\$409.56
108619	10/28/2022	LEARNING A-Z	\$418.18
108620	10/28/2022	LILAC CITY BEHAVIORAL SERVICES PLLC	\$27,488.83
108621	10/28/2022	M & L SUPPLY	\$202.20

Mead School District No 354

Payee Listing

Fiscal Year: 2022-2023

Criteria:

Bank Account: SPOKANE COUNTY TREASURER
153607390207

Voucher: 1041

Starting Check Number: 108584

Check #	Date	Payee	Amount
108622	10/28/2022	MAXIM STAFFING SOLUTIONS	\$3,700.40
108623	10/28/2022	MILLERSMITH, TISHA	\$2,400.00
108624	10/28/2022	MOORE, ZION	\$45.00
108625	10/28/2022	MOUNT SPOKANE HIGH SCHOOL	\$74.00
108626	10/28/2022	NEWS-2-YOU INC	\$1,127.53
108627	10/28/2022	NORTH 40 OUTFITTERS	\$21.93
108628	10/28/2022	NORTHWEST TEXTBOOK DEPOSITORY	\$10,373.26
108629	10/28/2022	PIERGALLINI, MONICA HULUBEI	\$1,500.00
108630	10/28/2022	PROVIDENCE HEALTH CARE FOUNDATION	\$760.00
108631	10/28/2022	RAINBOW RESOURCES	\$299.13
108632	10/28/2022	RWC INTERNATIONAL	\$9,480.97
108633	10/28/2022	SACRED HEART CHILDREN'S HOSPITAL	\$60.00
108634	10/28/2022	SAFETY-KLEEN	\$255.65
108635	10/28/2022	SCENARIO LEARNING LLC	\$1,050.00
108636	10/28/2022	SCHOOL SPECIALTY	\$12,828.40
108637	10/28/2022	SPOKANE FALLS MUSIC ED ASSOC	\$825.00
108638	10/28/2022	SPOKANE INTERNATIONAL TRANSLATION	\$120.85
108639	10/28/2022	ST GEORGE'S SCHOOL	\$3,240.00
108640	10/28/2022	STAPLES ADVANTAGE	\$101.74
108641	10/28/2022	STARPLEX CORPORATION	\$3,347.00
108642	10/28/2022	STEVENS, CLAY PS	\$31,698.22
108643	10/28/2022	STONEWAY ELECTRIC	\$517.02
108644	10/28/2022	SUN.RENTAL	\$94.15
108645	10/28/2022	TEACHING TEXTBOOKS INC	\$43.08
108646	10/28/2022	TERRY'S DAIRY INC	\$17,259.59
108647	10/28/2022	THE MATH LEARNING CENTER	\$719.40
108648	10/28/2022	TYLER TECH INC	\$106,866.37
108649	10/28/2022	US FOODS INC	\$72,545.41
108650	10/28/2022	US FOODS INC	\$7,226.36
108651	10/28/2022	US LINEN & UNIFORM INC	\$91.04
108652	10/28/2022	WA ST FIRST AID	\$480.00
108653	10/28/2022	WALTER E NELSON CO	\$109.07
108654	10/28/2022	WITHERSPOON BRAJCICH MCPHEE PLLC	\$1,522.50
108655	10/28/2022	ZIGGY'S	\$19.95
Total Amount:			\$350,714.84

End of Report

Mead School District No 354

Voucher Supplement Account Summary

Fiscal Year: 2022-2023

Voucher Batch Number: 1042

10/28/2022

Vendor Remit Name	Vendor #	Account	Description	Amount
Doyle, Shelley Ann				
		1.0.530.9900.52.5190.09.36.000.0000	UNIFORM REPLACEMENT	\$91.64
Erickson, Randy L			Vendor Total:	\$91.64
		1.0.530.9900.52.7340.09.36.000.0000	DRIVER PHYSICALS	\$150.00
Jordan, Cynthia Gret			Vendor Total:	\$150.00
		1.0.530.0100.21.5100.01.08.000.0000	STUDENT SERVICE SUPPLIES	\$66.58
Lee, Robert Edward II			Vendor Total:	\$66.58
		1.1.530.0128.28.8582.27.27.000.0000	AD/SPORTS TRAVEL-OUT OF DISTRICT	\$71.25
Smith-Wallis, Tija Winslow			Vendor Total:	\$71.25
		1.0.530.0100.27.8581.22.03.000.0000	TRAVEL-IN DISTRICT	\$18.59
		1.0.530.0100.27.8581.26.03.000.0000	TRAVEL-IN DISTRICT	\$18.60
St Clair, Mark E			Vendor Total:	\$37.19
		1.0.530.3151.27.8582.01.39.000.0000	TRAVEL-OUT OF DISTRICT	\$116.13
		1.0.530.3451.27.8582.01.39.000.0000	TRAVEL-OUT OF DISTRICT	\$116.13
			Vendor Total:	\$232.26
			Grand Total:	\$648.92

End of Report

Mead School District No 354

Payee Listing

Fiscal Year: 2022-2023

Criteria:

Bank Account: SPOKANE COUNTY TREASURER
153607390207

Voucher: 1053

Starting Check Number: 108742

Check #	Date	Payee	Amount
108742	11/04/2022	A2Z INTERPRETING, LLC	\$110.00
108743	11/04/2022	ACE HARDWARE	\$1.83
108744	11/04/2022	ADVANCED PAGING & COMMUNICATIONS INC	\$30.38
108745	11/04/2022	AGPARTS WORLDWIDE INC	\$3,028.85
108746	11/04/2022	AI-MEDIA TECHNOLOGIES LLC	\$3,795.00
108747	11/04/2022	ALPHA OMEGA TOURS & CHARTERS	\$4,229.00
108748	11/04/2022	AMAZON	\$846.76
108749	11/04/2022	AMERICAN SOLUTIONS FOR BUSINESS	\$316.35
108750	11/04/2022	ASCD	\$59.00
108751	11/04/2022	AVISTA UTILITIES	\$101,970.83
108752	11/04/2022	BARGREEN ELLINGSON INC	\$30.18
108753	11/04/2022	BEST WESTERN - WALLA WALLA	\$1,105.92
108754	11/04/2022	BLX GROUP LLC	\$2,250.00
108755	11/04/2022	CEREBELLUM CORPORATION	\$120.62
108756	11/04/2022	CI SOLUTION	\$26,048.88
108757	11/04/2022	CUSTOMINK LLC	\$884.13
108758	11/04/2022	CUTLER, DAN J	\$400.00
108759	11/04/2022	DEER PARK SCHOOL DIST 414	\$418.76
108760	11/04/2022	DEPT OF LICENSING	\$91.00
108761	11/04/2022	DORIAN STUDIO	\$2,138.13
108762	11/04/2022	DreamBox Learning Inc	\$544.50
108763	11/04/2022	DUNRITE REPAIR	\$148.10
108764	11/04/2022	ENGRAVER	\$245.25
108765	11/04/2022	ESD 113	\$600.00
108766	11/04/2022	EXCELSIOR HOLISTIC SCHOOLS LLC	\$23,200.00
108767	11/04/2022	FISHER'S TECHNOLOGY	\$10,783.55
108768	11/04/2022	GANDER PUBLISHING, INC.	\$1,236.23
108769	11/04/2022	GOPHER	\$571.03
108770	11/04/2022	HENRY SCHEIN INC	\$3,443.85
108771	11/04/2022	HILTON-YAKIMA	\$2,353.42
108772	11/04/2022	HOFFMAN MUSIC CO	\$239.80
108773	11/04/2022	HOME DEPOT CREDIT SERVICES	\$271.15
108774	11/04/2022	HOME DEPOT PRO	\$14,073.94
108775	11/04/2022	INCWEBS INC	\$1,490.00
108776	11/04/2022	INTERMAX NETWORKS	\$4,922.45
108777	11/04/2022	JAE ENTERPRISES LLC	\$929.42
108778	11/04/2022	JOSTENS	\$3,597.51
108779	11/04/2022	JW PEPPER	\$204.45

Mead School District No 354

Payee Listing

Fiscal Year: 2022-2023

Criteria:

Bank Account: SPOKANE COUNTY TREASURER
153607390207

Voucher: 1053

Starting Check Number: 108742

Check #	Date	Payee	Amount
108780	11/04/2022	KCDA	\$5,066.91
108781	11/04/2022	LAWSON PRODUCTS INC	\$258.20
108782	11/04/2022	LINC FOODS	\$1,020.00
108783	11/04/2022	MAXIM STAFFING SOLUTIONS	\$1,808.95
108784	11/04/2022	MCRUFFY PRESS	\$119.80
108785	11/04/2022	NAPA AUTO PARTS	\$2,245.64
108786	11/04/2022	NORTH 40 OUTFITTERS	\$71.29
108787	11/04/2022	POWERSCHOOL GROUP LLC	\$111,739.38
108788	11/04/2022	PROVDIENCE HEALTH AND SERVICES WA	\$90.00
108789	11/04/2022	PUMPTECH LLC	\$2,157.07
108790	11/04/2022	RAINBOW RESOURCES	\$1,014.85
108791	11/04/2022	RIO GRANDE ALBUQUERQUE	\$2,491.13
108792	11/04/2022	RWC INTERNATIONAL	\$2,013.57
108793	11/04/2022	SCHOLASTIC BOOK FAIRS	\$917.83
108794	11/04/2022	SHARP STUFF	\$1,045.31
108795	11/04/2022	SHERWIN WILLIAMS	\$103.91
108796	11/04/2022	SPOKANE CO WATER DIST 3	\$6,015.94
108797	11/04/2022	SPOKANE TESTING SOLUTIONS	\$165.00
108798	11/04/2022	SPOKESMAN REVIEW.	\$133.80
108799	11/04/2022	STAPLES ADVANTAGE	\$264.88
108800	11/04/2022	TDS TELECOM SERVICE LLC	\$2,198.02
108801	11/04/2022	TOOLS4EVER	\$1,750.00
108802	11/04/2022	US LINEN & UNIFORM INC	\$2,645.91
108803	11/04/2022	WASBO	\$50.00
108804	11/04/2022	WASHINGTON STATE ARCHERY ASSOCIATION	\$240.00
108805	11/04/2022	WCP SOLUTIONS	\$6,740.15
108806	11/04/2022	WELLS FARGO FINANCIAL LEASING INC	\$5,749.13
108807	11/04/2022	WHITESTONE MOUNTAIN ORCHARD INC	\$1,553.75
108808	11/04/2022	WSGCA	\$170.00
108809	11/04/2022	WSU SCHOOL OF MUSIC	\$300.00
108810	11/04/2022	YOKES	\$25.35

Total Amount: \$376,896.04

End of Report

Mead School District No 354

Voucher Supplement Account Summary

Fiscal Year: 2022-2023

Voucher Batch Number: 1054

11/04/2022

Vendor Remit Name	Vendor #	Account	Description	Amount
Adams, Carl				
		1.1.530.0128.28.8582.27.27.000.0000	AD/SPORTS TRAVEL-OUT OF DISTRICT	\$149.00
Bagdon, Katie Lyanne			Vendor Total:	\$149.00
		1.0.530.2100.21.8582.01.09.000.0000	TRAVEL-OUT OF DISTRICT	\$530.50
Clegg, Summer A			Vendor Total:	\$530.50
		1.1.530.0128.28.8582.27.27.000.0000	AD/SPORTS TRAVEL-OUT OF DISTRICT	\$82.00
Daratha, Irvin Scott			Vendor Total:	\$82.00
		1.1.530.0128.28.8582.27.27.000.0000	AD/SPORTS TRAVEL-OUT OF DISTRICT	\$82.00
Fry, Jacob Christian			Vendor Total:	\$82.00
		1.1.530.0128.28.8582.27.27.000.0000	AD/SPORTS TRAVEL-OUT OF DISTRICT	\$82.00
Gilbert, Donald L			Vendor Total:	\$82.00
		1.0.530.9700.63.8581.07.35.000.0000	TRAVEL-IN DISTRICT	\$115.38
Gunther, Tanya M			Vendor Total:	\$115.38
		1.0.530.0100.27.8581.01.05.000.0000	TRAVEL-IN DISTRICT	\$22.38
Heifer, Jeanne Eggart			Vendor Total:	\$22.38
		1.1.530.0128.28.8582.27.27.000.0000	AD/SPORTS TRAVEL-OUT OF DISTRICT	\$82.00
Hennessy, Kari J			Vendor Total:	\$82.00
		1.0.530.0100.27.8581.01.05.000.0000	TRAVEL-IN DISTRICT	\$26.25
Mann, Katheryn Jeanne			Vendor Total:	\$26.25
		1.1.530.0128.28.8582.27.27.000.0000	AD/SPORTS TRAVEL-OUT OF DISTRICT	\$82.00

Mead School District No 354

Voucher Supplement Account Summary

Fiscal Year: 2022-2023

Voucher Batch Number: 1054

11/04/2022

Vendor Remit Name	Vendor #	Account	Description	Amount
McCarville, Jane			Vendor Total:	\$82.00
		1.0.530.0100.27.8581.01.05.000.0000	TRAVEL-IN DISTRICT	\$49.19
Schuerman, Alexander D			Vendor Total:	\$49.19
		1.1.530.0128.28.8582.27.27.000.0000	AD/SPORTS TRAVEL-OUT OF DISTRICT	\$149.00
Shoop-Swanson, Karen Jo			Vendor Total:	\$149.00
		1.0.530.2107.27.8581.01.09.000.0000	TRAVEL-IN DISTRICT	\$236.76
Sonneland, Andrew Arthur			Vendor Total:	\$236.76
		1.1.530.0128.28.8582.27.27.000.0000	AD/SPORTS TRAVEL-OUT OF DISTRICT	\$82.00
Wurst, Danette K			Vendor Total:	\$82.00
		1.0.530.2133.26.8581.01.09.000.0000	TRAVEL-IN DISTRICT	\$63.63
			Vendor Total:	\$63.63
			Grand Total:	\$1,834.09

End of Report

**CAPITAL
PROJECTS
FUND**

Mead School District No 354

Payee Listing

Fiscal Year: 2022-2023

Criteria:

Bank Account: SPOKANE COUNTY TREASURER
153607390207

Voucher: 1043

Starting Check Number: 108656

Check #	Date	Payee	Amount
108656	10/28/2022	EVCO SOUND & ELECTRONICS	\$8,277.34
Total Amount:			<u>\$8,277.34</u>

End of Report

Mead School District No 354

Payee Listing

Fiscal Year: 2022-2023

Criteria:

Bank Account: SPOKANE COUNTY TREASURER
153607390207

Voucher: 1055

Starting Check Number: 108811

Check #	Date	Payee	Amount
108811	11/04/2022	STANDARD PLUMBING & HEATING	\$8,125.70
Total Amount:			<u>\$8,125.70</u>

End of Report

ASB FUND

Mead School District No 354

Payee Listing

Fiscal Year: 2022-2023

Criteria:

Bank Account: SPOKANE COUNTY TREASURER
153607390207

Voucher: 1044

Starting Check Number: 108657

Check #	Date	Payee	Amount
108657	10/28/2022	ALPHA OMEGA TOURS & CHARTERS	\$13,463.25
108658	10/28/2022	APPLE COMPUTER INC	\$1,326.40
108659	10/28/2022	ARVER, OLIVIA	\$15.00
108660	10/28/2022	BSN SPORTS	\$1,118.07
108661	10/28/2022	COEUR D'ALENE CHARTER ACADEMY, INC	\$190.00
108662	10/28/2022	EDUCATIONAL THEATRE ASSOCIATION	\$420.00
108663	10/28/2022	GERL, ANGELLE	\$40.00
108664	10/28/2022	HARVEST MARCHING BAND FESTIVAL	\$275.00
108665	10/28/2022	LONE STAR PERCUSSION	\$93.98
108666	10/28/2022	MEAD SCHOOL DISTRICT	\$60.00
108667	10/28/2022	MECA SPORTSWEAR	\$607.01
108668	10/28/2022	MOORE, ZION	\$50.00
108669	10/28/2022	PENSKE TRUCK LEASING CO	\$1,352.97
108670	10/28/2022	RIDDELL	\$28.59
108671	10/28/2022	SUNRISE CUSTOM APPAREL	\$3,727.68
108672	10/28/2022	TAT, TYLER	\$15.00
108673	10/28/2022	UNIVERSAL ATHLETIC	\$813.17
108674	10/28/2022	WASHINGTON OFFICIALS ASSOCIATION	\$15,980.00
		Total Amount:	\$39,576.12

End of Report

Mead School District No 354

Voucher Supplement Account Summary

Voucher Batch Number: 1046 10/28/2022

Fiscal Year: 2022-2023

Vendor Remit Name	Vendor #	Account	Description	Amount
Collins, Maureen Lynn		4.0.530.4250.00.0000.27.00.000.0000	FCCLA	\$158.16
			Vendor Total:	\$158.16
Patterson, Brian Ray		4.0.530.2401.00.0000.28.00.000.0000	FOOTBALL	\$351.28
			Vendor Total:	\$351.28
			Grand Total:	\$509.44

End of Report

Mead School District No 354

Payee Listing

Fiscal Year: 2022-2023

Criteria:

Bank Account: SPOKANE COUNTY TREASURER
153607390207

Voucher: 1056

Starting Check Number: 108812

Check #	Date	Payee	Amount
108812	11/04/2022	ALPHA OMEGA TOURS & CHARTERS	\$9,520.00
108813	11/04/2022	AMERICAN ACADEMIC COMPETITION INST LLC	\$600.00
108814	11/04/2022	AREA XI DECA	\$484.00
108815	11/04/2022	ASSISTANT COACH FUNDRAISING LLC	\$7,091.00
108816	11/04/2022	BSN SPORTS	\$3,732.81
108817	11/04/2022	CENTRAL VALLEY HIGH SCHOOL	\$75.00
108818	11/04/2022	CLEARWATER MUSIC	\$108.90
108819	11/04/2022	COEUR D'ALENE CHARTER ACADEMY, INC	\$100.00
108820	11/04/2022	CREATIVE SOLUTIONS INC	\$2,520.28
108821	11/04/2022	ELLISON, GARY	\$700.00
108822	11/04/2022	FERRIS HIGH SCHOOL	\$300.00
108823	11/04/2022	HAMILTON, KENNETH	\$100.00
108824	11/04/2022	HANSEN, HEATHER	\$100.00
108825	11/04/2022	JAE ENTERPRISES LLC	\$482.13
108826	11/04/2022	K C ENTERPRISES	\$52.36
108827	11/04/2022	KCDA	\$18.93
108828	11/04/2022	LEVY SPOKANE CONVENTION CENTER	\$165.55
108829	11/04/2022	MEAD SCHOOL DISTRICT	\$15.00
108830	11/04/2022	MOUNT SPOKANE HIGH SCHOOL	\$117.00
108831	11/04/2022	MT SPOKANE ASB	\$38.00
108832	11/04/2022	NATIONAL COLOR GRAPHICS, INC	\$478.51
108833	11/04/2022	NORTH STAR ENTERPRISES INC	\$645.00
108834	11/04/2022	NORTHWOOD MIDDLE SCHOOL	\$50.00
108835	11/04/2022	PENSKE TRUCK LEASING CO	\$1,117.09
108836	11/04/2022	RIZK, KELLY	\$50.00
108837	11/04/2022	SHADLE PARK HIGH SCHOOL	\$350.00
108838	11/04/2022	SPOKANE CO TREASURER	\$852.50
108839	11/04/2022	THEAL, SARAH	\$100.00
108840	11/04/2022	WANDERMERE GOLF COURSE	\$100.00
108841	11/04/2022	WORLDSTRIDES HERITAGE PERFORMANCE PROG	\$18,800.00
Total Amount:			\$48,864.06

End of Report

Mead School District No 354

Voucher Supplement Account Summary

Fiscal Year: 2022-2023

Voucher Batch Number: 1057 11/04/2022

Vendor Remit Name	Vendor #	Account	Description	Amount
Wurst, Danette K		4.0.530.6030.00.0000.27.00.000.0000	INVESTED (SAUL HAUS)	\$50.12
			Vendor Total:	\$50.12
			Grand Total:	\$50.12

End of Report

November 7, 2022 Surplus Items

Quantity	Item	Description	Serial Number
1	Sony	ATRAC DSP TYPE-R/ATRAC 3	8802921
1	marantz	CD recorder/CD player CDR500	MZ000047020774
1	Sony	ATRAC DSP TYPE-R/ATRAC 3	8802947
1	marantz	CD recorder/CD player CDR500	MZ000047020716
1	DAEWOO	DVD/video-CD/CD player DS-2500N	D12USJ1Y 14514
1	GOVIDEO	DVD/VHS player	4262140034726
1	TASCAM	CD-A700	210007
1	Sony	ATRAC DSP TYPE-R/ATRAC 3	8800883
178	Marching Uniform	Jacket	
186	Marching Uniform	Vest	
159	Marching Uniform	Shako (Hat)	
1	Shure	Wireless Receiver	1006000446
1	Shure	Wireless Receiver	1006000445
1	Shure	Wireless Receiver	1005000417
1	Shure	Wireless Receiver	1005000415
1	Slingerland	29" Bass Drum	337873
1	Slingerland	27" Bass Drum	337874
1	Slingerland	23" Bass Drum	341437
1	Shure	Antenna/Power Distribution System	00004029381
1	Shure	Antenna/Power Distribution System	00004029388
1	Shure	Wireless Receiver	1005000416
1	Shure	Wireless Receiver	1011000505
1	Shure	Wireless Receiver	1006000600
1	Shure	Wireless Receiver	1006000444
1	Insignia	CD Player	13G04A0000331
1	Audiovox	CD Player	
	23 boxes of old marching band uniforms		
6	cloth benches	red	
1	chemical box/table		
1	word building cards	grade 4 treasures	

MEAD SCHOOL DISTRICT

Board Meeting of November 7, 2022

New Business

VI.B.

Agenda Item: **Resolution 22-10 – Transferring Territories in Director Districts**

Background: RCW 29A.76.010 requires school districts in the state of Washington to review, and if necessary, make changes to Director District Boundaries from time to time as the population of the district changes. This process takes place every ten years after census data is collected.

Sammamish Data Systems has assisted the district in modifying the current boundaries so that each Director District has essentially the same population. The ideal population for each Director District, based on a total population of 61,433, is 12,287. The presented boundary proposal ranges from a high of 12,336 (District #3) to a low of 12,226 (District #1).

A public hearing on the proposed boundary changes was held on October 24, 2022, at the regularly scheduled board meeting. There were no public comments made on the proposed boundaries at this meeting. The proposed boundaries have also been posted on the Mead School District homepage since October 4, 2022.

Recommendation: It is recommended the Board approve Resolution 22-10, as presented.

Attachments: Resolution 22-10



RESOLUTION 22-10
Transferring Territories in Director Districts

WHEREAS, RCW 29A.76.010 requires the Mead School District Board of Directors to review and, if necessary, make changes to the boundaries of Board Member Director Districts so as to provide, so far as practicable, equal representation according to population, and

WHEREAS, the data compiled from the 2020 U.S. Census illustrates a population imbalance in most Director Districts.

NOW THEREFORE BE IT RESOLVED, that the Mead School District Director Districts have been revised per the attached Director District Boundary Proposal dated September 22, 2022 in order to provide, as far as practicable, equal representation according to population.

ADOPTED by the Board of Directors of Mead School District No. 354, Spokane County, Washington and authenticated by the signatures affixed below.

Dated this 7th day of November, 2022.

Attest:

Mead School District No. 354
Board of Directors

Secretary to the Board

**Mead School District -
Proposed Board Districts
as Approximated Using
Census 2020 Geography**

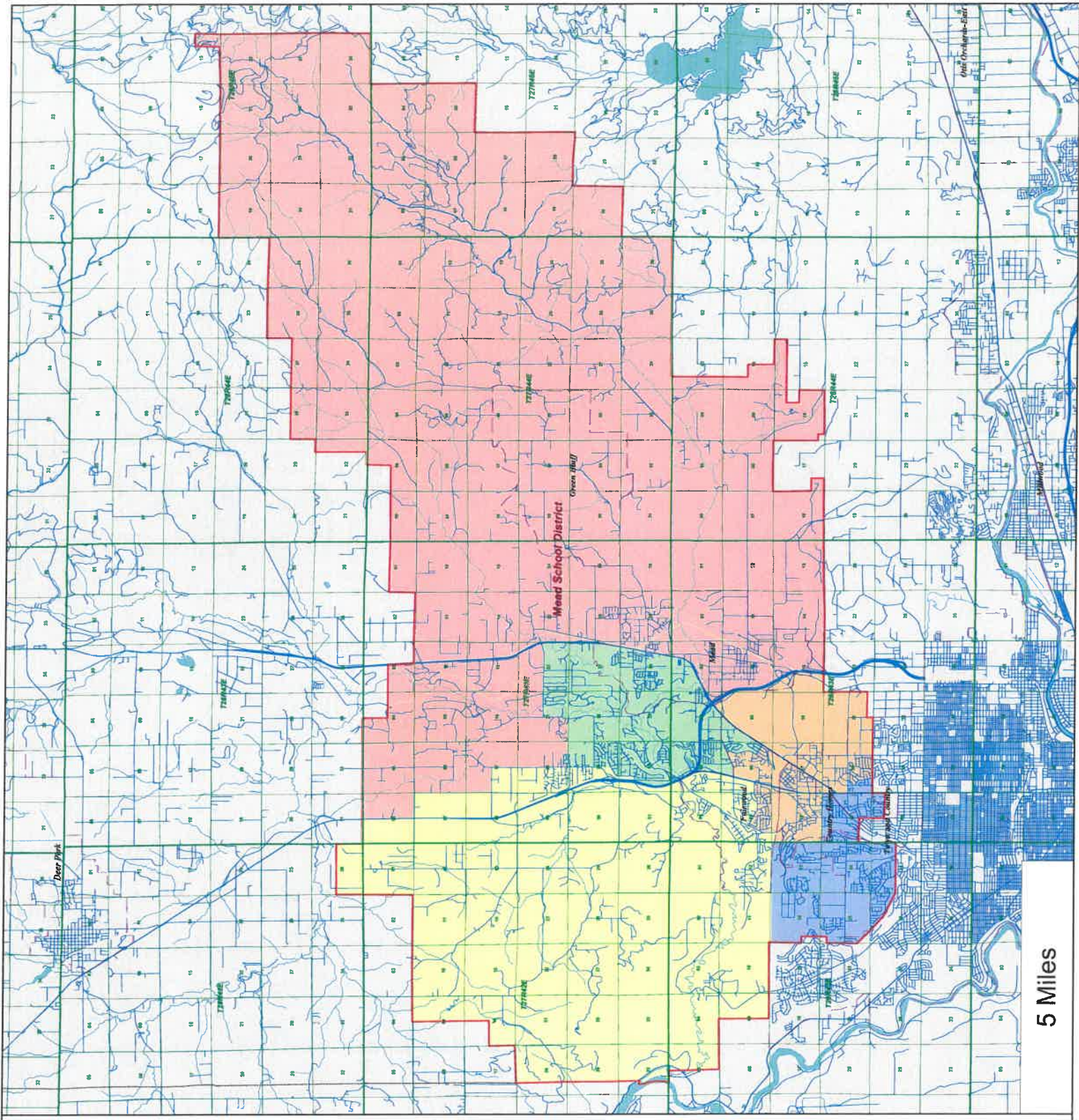
- 1st District
- 2nd District
- 3rd District
- 4th District
- 5th District

City Limits

District Outline

Sectional Centers

Townships



5 Miles






District Summary Report

Director District Number	Ideal Population	Total Population	Deviation from Ideal	% Deviation from Ideal	White Population	Hispanic Origin (of any race)	Non White & Mixed
1st	12,287	12,226	-61	-0.50	10,581	606	1,645
2nd	12,287	12,310	23	0.19	10,742	642	1,568
3rd	12,287	12,336	49	0.40	9,607	774	2,729
4th	12,287	12,271	-16	-0.13	10,130	700	2,141
5th	12,287	12,290	3	0.02	10,836	491	1,454
Totals.....		<u>61,433</u>	<u>-2</u>		<u>51,896</u>	<u>3,213</u>	<u>9,537</u>

Summary of Population by Race and Hispanic Origin

District Number	Total Population	Total Population by Race										Two or More Races		Hispanic Origin (of any race)
		Single Race										Other Race	Total	
		Total	White	Black African American	American Indian and Alaska Native	Asian	Hawaiian and Other Pacific Islander	Native and Other Pacific Islander						
1st	12,226	11,286	10,581	137	120	214	83	151	940	606				
2nd	12,310	11,339	10,742	120	91	220	18	148	971	642				
3rd	12,336	11,020	9,607	337	178	423	187	288	1,316	774				
4th	12,271	11,234	10,130	178	142	507	91	186	1,037	700				
5th	12,290	11,284	10,836	59	115	106	22	146	1,006	491				
Totals	61,433	56,163	51,896	831	646	1,470	401	919	5,270	3,213				

**Mead School District -
Proposed Board Districts
as Approximated Using
Census 2020 Geography**

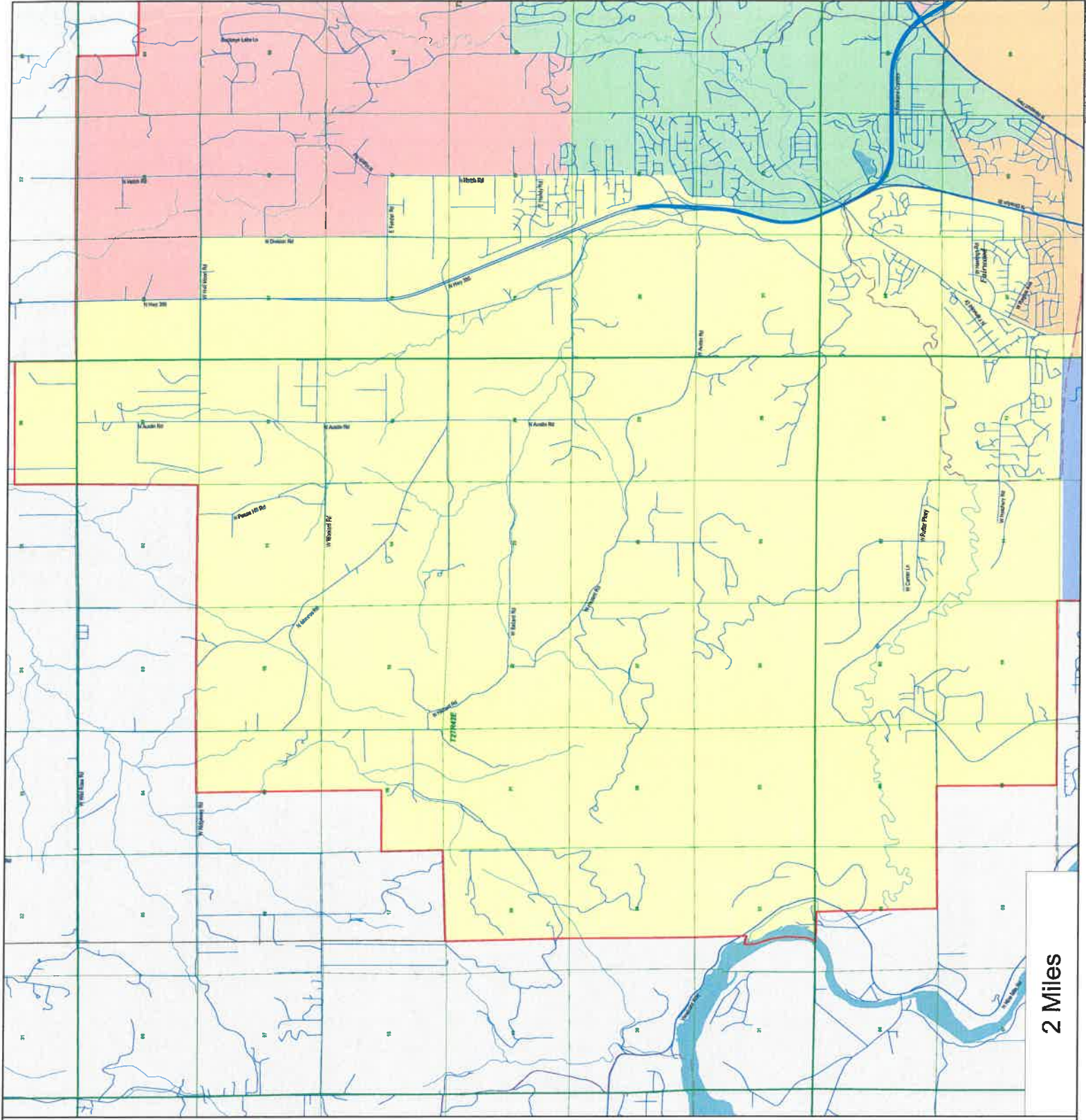
-  1st District
-  2nd District
-  3rd District
-  4th District
-  5th District

 City Limits

 District Outline





 Sectional Centers

 Townships



2 Miles

**Mead School District -
Proposed Board Districts
as Approximated Using
Census 2020 Geography**

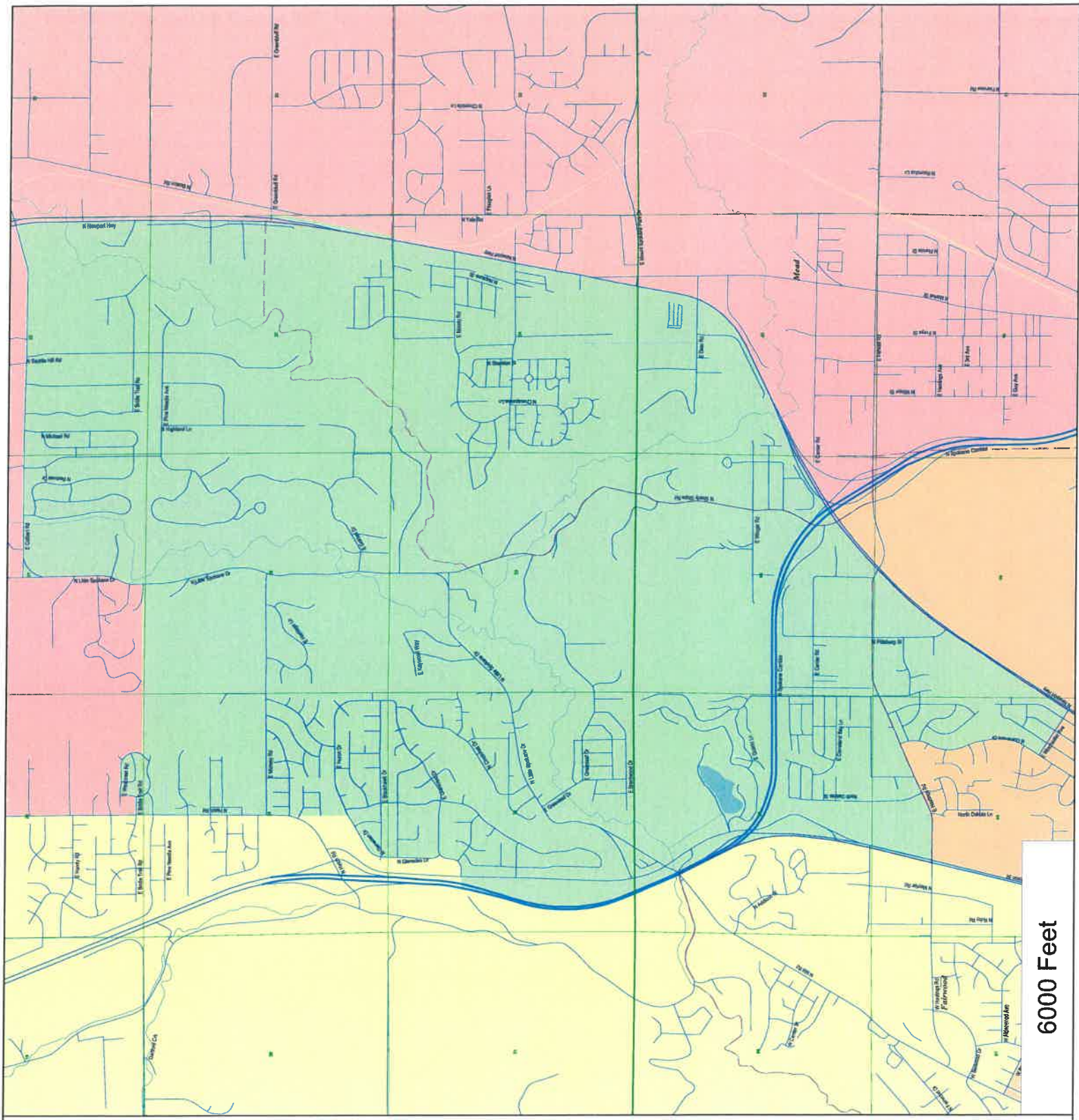
-  1st District
-  2nd District
-  3rd District
-  5th District

 City Limits

 District Outline






 Sectional Centers

 Townships



6000 Feet

**Mead School District -
Proposed Board Districts
as Approximated Using
Census 2020 Geography**

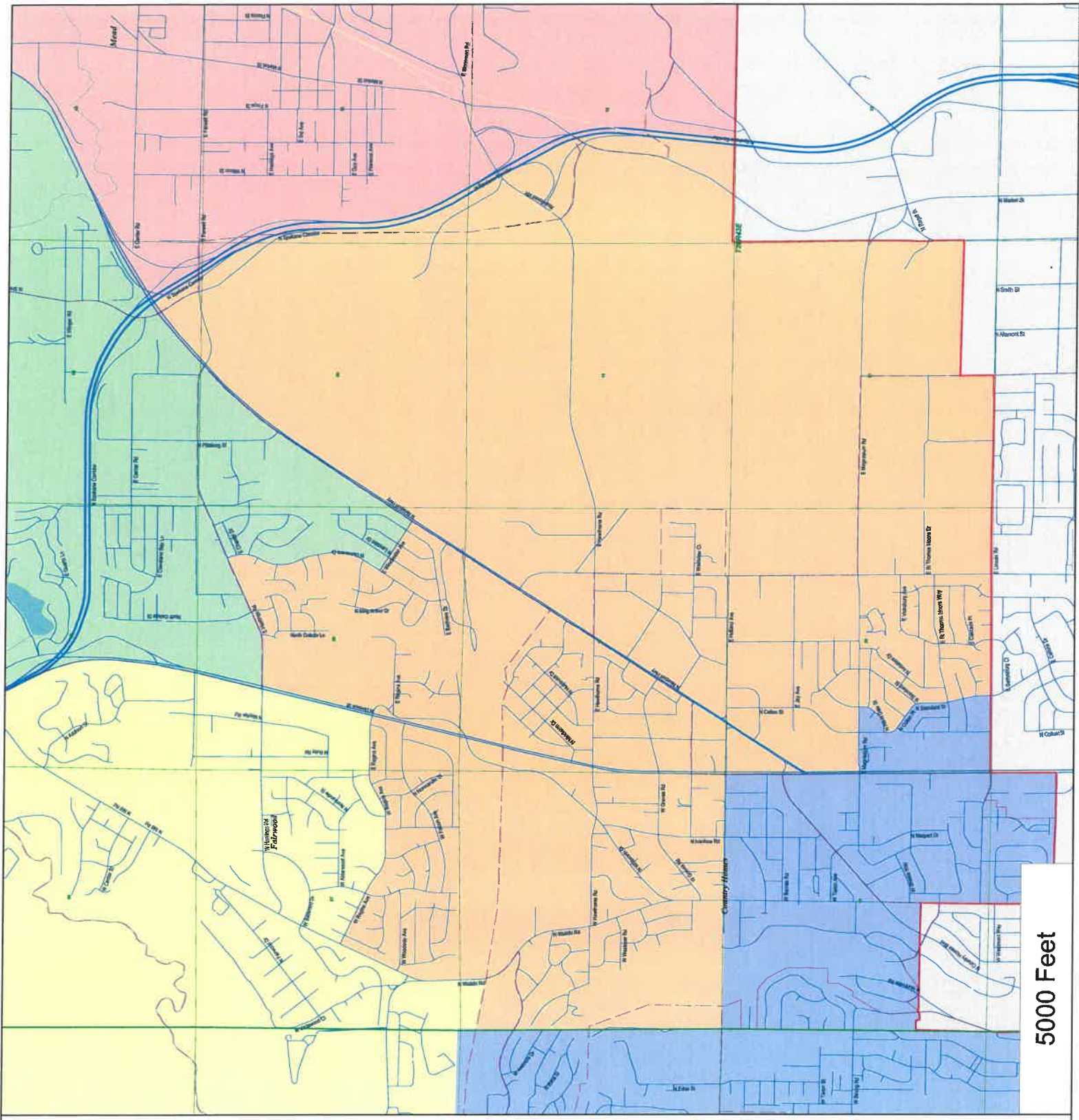
-  1st District
-  2nd District
-  3rd District
-  4th District
-  5th District

 City Limits

 District Outline

 Sectional Centers

 Townships



5000 Feet

**Mead School District -
Proposed Board Districts
as Approximated Using
Census 2020 Geography**



1st District
2nd District
3rd District
4th District



City Limits



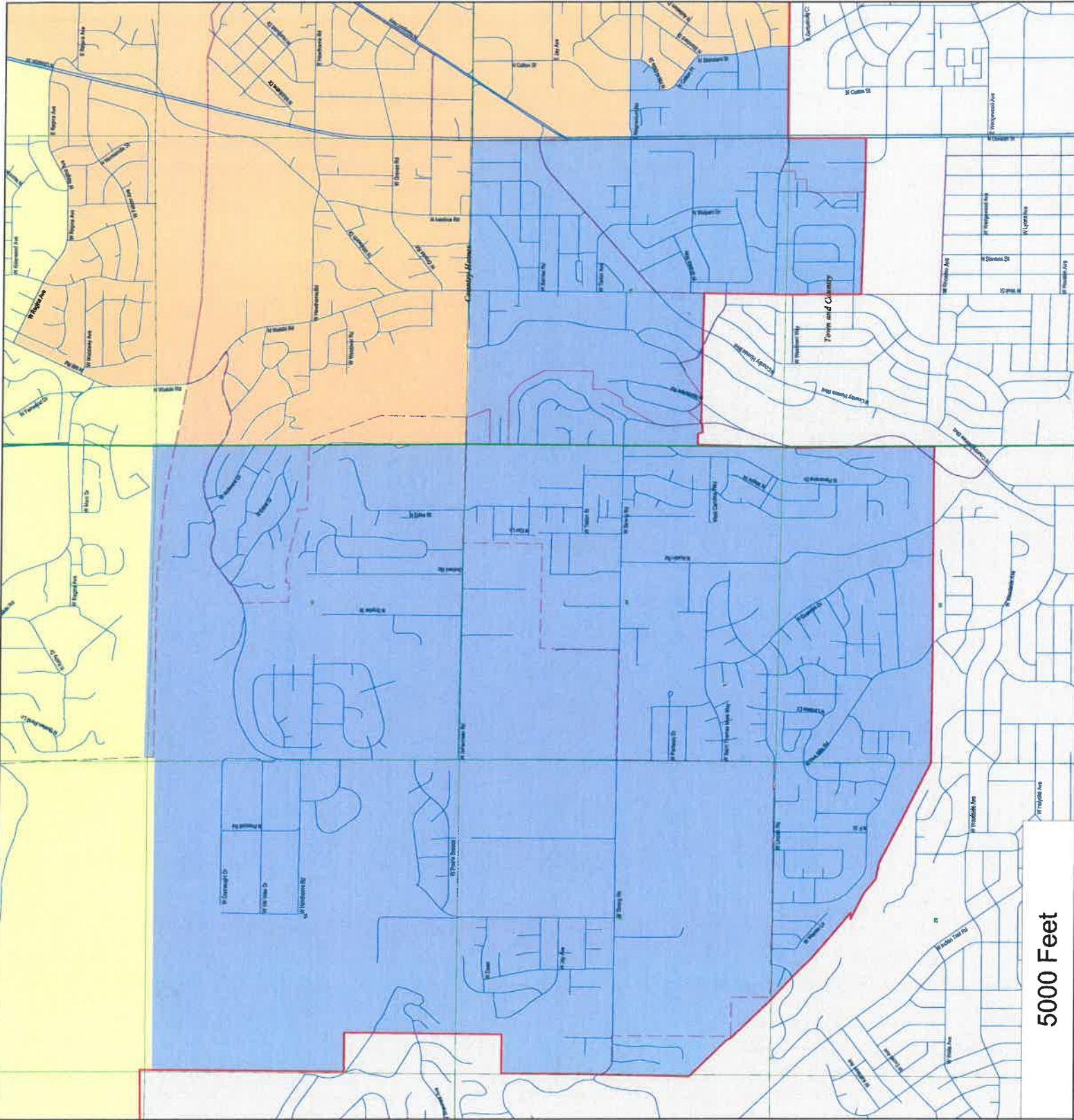
District Outline



Sectional Centers








Townships




5000 Feet

**Mead School District -
Proposed Board Districts
as Approximated Using
Census 2020 Geography**

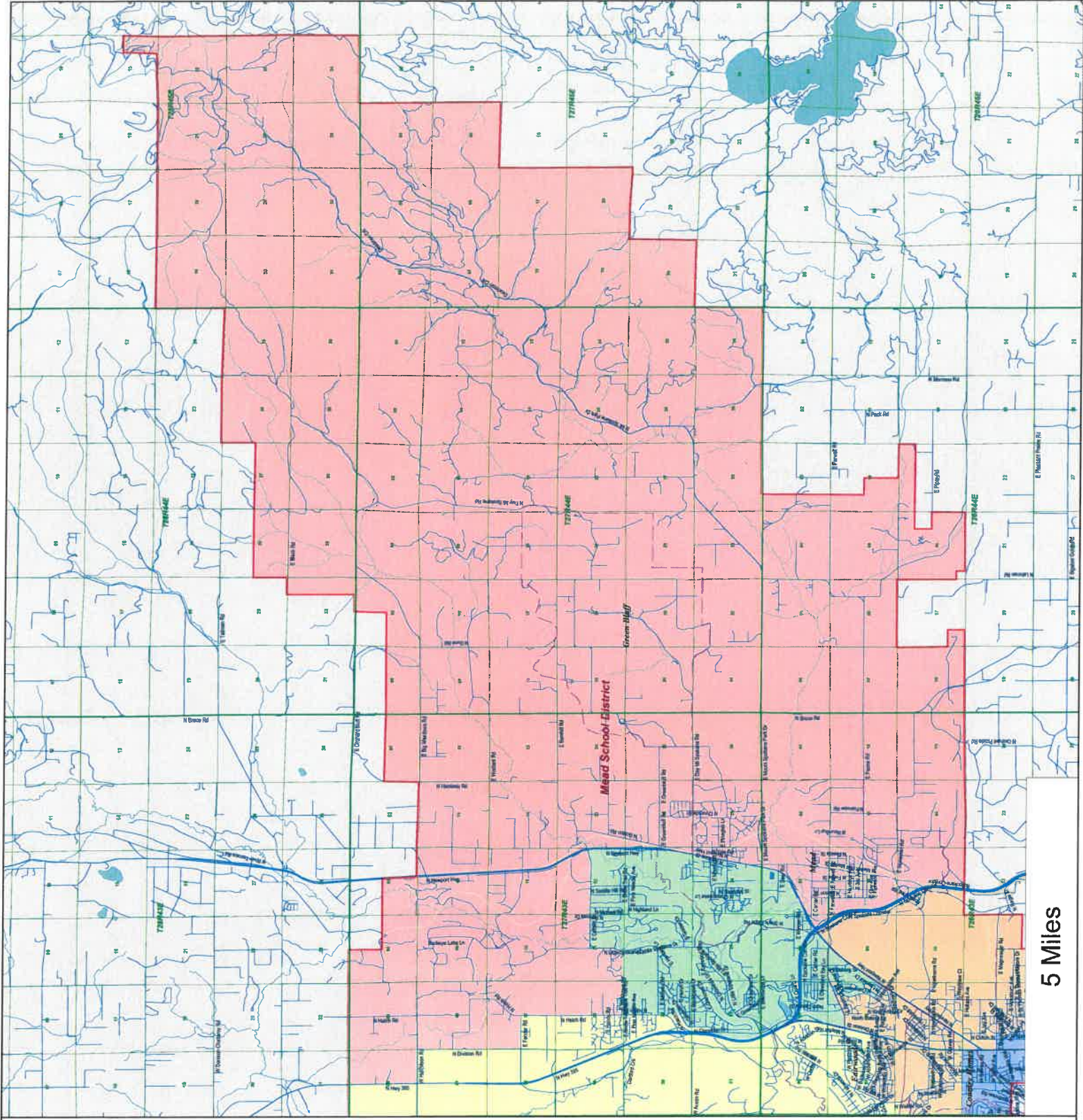
-  1st District
-  2nd District
-  3rd District
-  4th District
-  5th District

 City Limits

 District Outline

 Sectional
Centers

 Townships



5 Miles

MEAD SCHOOL DISTRICT

Board Meeting of November 7, 2022
New Business

VI.C.

Agenda Item: Student Travel Proposal
Mead High School Girls Basketball

Background:

The Mead High School Girls Basketball team requests permission to travel to Phoenix/Tempe, Arizona, December 26-31, 2022, to compete in the Cactus Jam basketball tournament where they are guaranteed three games against high caliber competition. It is estimated twelve student athletes will participate, accompanied by three chaperones/coaches including Head Coach Quantae Anderson.

The proposed trip takes place during Winter Break so no school will be missed.

Fiscal Impact:

The estimated per student cost of the trip is \$1,360.

Recommendation:

Approval of the request from the Mead High School Girls Basketball team to travel to Phoenix/Tempe, Arizona, to participate in the Cactus Jam basketball tournament December 26-31, 2022, is recommended.

Attachment(s): Student Travel Proposal



STUDENT TRAVEL PROPOSAL

School: Mead High School

Group: Girls Basketball

Trip Name: Cactus Jam

Submission Date: 10/06/2022

For every student who travels as part of this activity I will have in my possession:

- A signed Student Travel Permission Form
- A Medical Emergency Information Form

Teacher/Coach/Advisor

Date

Extended Field Trip (Overnight)

Trips related to club, leadership or academic activities that involve overnight stays in Washington, Montana, Idaho, Oregon or British Columbia (e.g. overnight leadership camps). Requires preliminary approval of building Principal, Activities/Athletic Director & Director of Secondary Education or Director of Elementary Education (depending on grade level).

X Special Event Trip (Overnight)

Co-curricular or extra-curricular trips that are not part of sanctioned regular or post-season schedules and involve overnight stays and substantial cost to the student (e.g. band trip to bowl parade and trips to national or regional student leadership conference). Requires preliminary approval of building Principal, Activities/Athletic Director & Director of Secondary Education or Director of Elementary Education (depending on grade level) followed by final School Board approval. All trips to destinations outside of Washington, Montana, Idaho, Oregon or British Columbia fall into this category.

Academic Study Trip (Overnight)

School sponsored academic trip that is supervised by school staff and results in educational credit for the student (e.g. government class trip to Washington, D.C., etc.). Requires preliminary approval of building Principal, Activities/Athletic Director & lead Student Services administrator followed by final School Board approval.

Day Trip

No overnight stay . . . Requires building principal authorization only.

Date(s) of Trip: December 26-31, 2022 Person in Charge Quantae Anderson

Destination(s) Phoenix & Tempe, Arizona

Approvals

Principal

Activities/Athletic Director

Director of Elementary or Secondary

Nurse

Pending Student List TBD.

School Board

Final Approval Date

Trip Educational Benefit and Planned Activities:

The "Cactus Jam" includes three (3) guaranteed games against great competition. Our student-athletes will have the opportunity to face & meet teams/players from different states and participate in some team bonding activities.

Cost & Funding Sources:

Building Budget Covering: No building budget funds will be used for this opportunity.	\$ 0
ASB Funds Covering: No ASB funds will be used for this opportunity.	\$ 0
District Funds Covering: No district funds will be used for this opportunity.	\$ 0
Student/Parent Cost (per student) Covering – Please Itemize: \$575.00 - Mission Palms Hotel for five (5) nights + Ground transportation to and from the airport and tournament fees. \$600.00 - Airfare to and from Phoenix, Arizona \$185.00 - Meals for the six day trip	\$ 575.00/player 600.00/player 185.00/player Total = \$1360.00/player

Fundraising Opportunities:

Participants:

Estimated # of Students 12 Estimated # of Adults (Chaperons & Staff) 3
of School Days Missed: 0 # of Sub Days Needed: 0 Student/Chaperone Ratio: 4:1

Additional Information:

1. Does the trip involve any of the following . . . please circle:

- Swimming and/or Boating
- Remote Locations/Hiking
- Outdoor Education
- Animals
- Air Travel
- Motorized Activities

2. Lodging: Tempe Mission Palms by Hyatt; 60 E 5th Street Tempe, AZ 85281; Phone: 480-894-1400

3. Transportation: Airfare will be paid by families of student/athletes. Ground transportation provided by tournament officials.

4. Supporting Documents:

Preliminary Trip Itinerary attached? X Yes No

Related brochures/information attached: X Yes No

Student Trip Expectations attached: X Yes No

Itinerary for Cactus Jam

**December 26-31, 2022
Phoenix/Tempe Arizona**

Monday, Dec. 26th

Destination: Phoenix, Arizona

Departure Time: Determined on flights.

Arrive in Phoenix: Determined on flights.

Hotel Check-in: TBA

Dinner/Activity: TBA

Lights Out: TBA

Tuesday, Dec 27th

Game Day #1

Details to come

Wednesday, Dec 28th

Game Day #2

Details to come

Thursday, Dec 29th

Off Day

Details to come

Friday, Dec 30th

Game Day #3

Details to come

Saturday, Dec 31st

Depart Phoenix

***Needs**

Both sets of Uniforms, socks, shoes, etc.

Water bottles

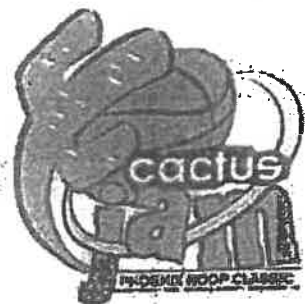
Personal hygiene products.

Snacks and money for food

Clothes for before and after games.

Mead Basketball expectations for Cactus Jam

- 1. Represent Self, Our Program, Mead High School, and our Mead Community in the highest regards.**
- 2. Abide by Mead Girls' Basketball Program Policies.**
- 3. Adhere to the Mead School District Athletic Code within the Athletic Handbook**
- 4. Families are responsible for travel accommodations to and from Phoenix/Tempe, Arizona.**
- 5. Families are responsible for food outside of breakfast.**



CACTUS JAM

22st ANNUAL PHOENIX HOOP CLASSIC DEC. 26-31, 2022 | PHOENIX, ARIZONA

Warm desert sun, relaxed shopping, and endless dining options to walk to, Phoenix makes for a fun and exciting winter destination for your team! With Arizona State University minutes away, athletes can take advantage of campus tours. There are also hikes, excursions to the Grand Canyon, and opportunities to catch a Phoenix Suns game. You are sure to have an unforgettable experience and face great competition.

Each team is guaranteed three games. Teams are split in to brackets based upon skill level and will be announced after all teams have signed up (typically late October).



WHAT'S INCLUDED

- Accommodations at Tempe Mission Palms (5 nights)
- Complimentary buffet breakfast (4 per person)
- Ground transportation to games, airport, Tempe Marketplace
- Tickets to Arizona State basketball game (pending schedule)
- Tournament fees
- Long sleeve tournament t-shirt
- Coaches gift



WHAT'S NOT INCLUDED

- Airfare or travel costs to Cactus Jam
- Meals outside of hotel breakfast
- Incidental expenses (phone, laundry, etc.)
- Travel insurance

CONTACT

JASON SARKIES
jason@globalsande.com

ERIK EVANS
erik@globalsande.com

ITINERARY

- DEC 26 Arrive in Phoenix/Tempe
- DEC 27 Game Day #1
- DEC 28 Game Day #2
- DEC 29 Off Day
- DEC 30 Game Day #3
- DEC 31 Depart Phoenix/Tempe

ELIGIBILITY

This holiday tournament is open to all NFHSA/AIA-sanctioned and eligible boys and girls varsity high school teams.

PRICING

QUAD \$575	TRIPLE \$605
DOUBLE \$685	SINGLE \$995

Note: Pricing is per person based upon number of people per room. All players and coaches must purchase tournament pricing.

SIGN UP NOW
\$500 deposit

SEPT. 10, 2022
\$1,500 due

NOV. 15, 2022
Remainder of payment due

Note: The deposit secures your spot in the tournament and is first come first served.

MEAD SCHOOL DISTRICT

Board Meeting of November 7, 2022

New Business

VI.D.

Agenda Item: **Resolution 22-07 Revision
2022/23 School Nutrition Fees**

Background: On August 15, 2022, the board approved school nutrition fees for the 2022/23 school year, which included no change in the amount charged for an adult breakfast.

Since board approval of school nutrition fees on August 15th it has come to our attention that an adjustment needs to be made in the amount charged for an adult breakfast. Pricing for Adult Meal Prices is based on a calculation from the U.S. Department of Agriculture. Based on the current calculation the district needs to increase the Adult Breakfast price from \$3.00 to at least \$3.10. Nutrition Services recommends increasing the price to \$3.25. A copy of the 2022-2023 Meal Price Recommendation Adjustment, along with a copy of Amended Resolution 22-07, are attached.

The increase as set forth above will meet USDA requirements and also assist in covering food and supply costs.

Recommendation: It is recommended the Board approve Amended Resolution 22-07, as presented.

Attachments: 2022-2023 Meal Price Recommendation Adjustment
Amended Resolution 22-07, 2022/23 School Nutrition Fees



Nutrition Services
 12509 N. Market St. Bldg E, Mead, WA 99021
 Telephone (509) 465-6100 FAX (509) 461-5111

2022-2023 Meal Price Recommendation Adjustment

	Current Breakfast	Proposed Breakfast	Current Lunch	Proposed Lunch
Elementary	1.60	1.85	2.85	2.95
Middle	1.85	2.00	3.40	3.50
High	1.85	2.00	3.40	3.50
Adult	3.00	3.25	5.00	No change
Milk	.65	No change	.65	No change

Pricing for Adult Meal Prices is based on a calculation from US Dept. of Agriculture. Based on the current calculation we need to increase the Adult Breakfast price from \$3.00 to at least \$3.10. Our recommendation is to increase to \$3.25.

Pricing Adult Meal Prices for Non-Pricing Programs

*Values current for SY 2022-23

Federal Reimbursement for *FREE student meals	\$2.67
Menu Certification	\$0.00
Value of USDA Foods	\$0.4300
Minimum Adult Lunch Price:	\$3.10



**RESOLUTION 22-07 - AMENDED
2022/23 School Nutrition Fees**

WHEREAS, fees and budget policies for school nutrition fees are incorporated into the operations of the school budget,

NOW, THEREFORE BE IT RESOLVED by the Board of Directors that the amounts set forth on the attached 2022/2023 Meal Price Recommendation be established and administered in the 2022/2023 operating budget.

ADOPTED by the Board of Directors of Mead School District No. 354, Spokane County, Washington and authenticated by the signatures affixed below.

Dated this 7th day of November, 2022.

Attest:

Mead School District No. 354
Board of Directors

Secretary to the Board



Nutrition Services
12509 N. Market St. Bldg E, Mead, WA 99021
Telephone (509) 465-6100 FAX (509) 461-5111

2022-2023 Meal Price Recommendation

	Current Breakfast	Proposed Breakfast	Current Lunch	Proposed Lunch
Elementary	1.60	1.85	2.85	2.95
Middle	1.85	2.00	3.40	3.50
High	1.85	2.00	3.40	3.50
Adult	3.00	3.25	5.00	No change
Milk	.65	No change	.65	No change

MEAD SCHOOL DISTRICT

Board Meeting of November 7, 2022

New Business

VI.E.

Agenda Item:

Award of Supplemental Prime Vendor Contract

Background:

The district has the option to access RFP 7-2122, Supplemental Prime Vendor, through an interlocal agreement with Spokane Public Schools.

The district's Prime Vendor is US Foods and they partner well with the district. However, issues with distribution and manufacturing shortages continue to disrupt the supply chain and product availability across the United States. In an effort to minimize unexpected issues and provide a stable supply of core menu products, the district recommends awarding a Supplemental Prime Vendor Contract to Good Source Solutions/Gold Star Foods.

Nutrition Services has previously used this distributor as a sole source supplier of some menu products and has been pleased with their customer service and product quality.

Fiscal Impact:

Overall pricing is consistent with similar products at US Foods.

Staffing Implications:

None

Other Considerations:

None

Recommendation:

Approval from the Board of Directors to award SPS RFP 7-2122, Supplemental Prime Vendor contract, for the 2022-2023 school year for the Mead School District to Good Source Solutions/Gold Star Foods is recommended.

Mead School District
 Budget Status Summary
 as of 8/31/2022

	Annual Budget (original)	Annual Budget (revised)	YTD Actual
Enrollment	10,084.00	10,197.00	10,197.50
			0.50
			0.00%
Revenues & Expenditures			
Revenues & Other Financing Sources	\$ 141,217,409	\$ 146,279,393	\$ 147,843,973
Expenditures & Other Financing Uses	\$ 148,433,728	\$ 150,183,728	\$ 149,373,346
Transfers (to)/from other Funds	\$ -	\$ -	\$ -
Net Change in Fund Balance	\$ (7,216,319)	\$ (3,904,335)	\$ (1,529,372)

Fund Balance

Beginning Fund Balance	\$ 15,053,688
Current Fund Balance	\$ 13,524,316
% of budgeted Expenditures	9.01%

	General Fund	ASB Fund	Debt Service Fund	Capital Projects Fund	Transportation Vehicle Fund	Permanent Fund	Total
Assets							
Cash and Cash Equivalents	15,645,333.11	1,222,362.28	3,884,495.21	10,212,089.87	609,639.85	0.00	31,573,920.32
Minus Warrants Outstanding	-2,150,812.07	-37,683.12	0.00	0.00	0.00	0.00	-2,188,495.19
Taxes Receivable	7,445,827.18		6,159,252.57	0.00	0.00	0.00	13,605,079.75
Due From Other Funds	48,902.82	0.00	0.00	0.00	0.00	0.00	48,902.82
Due From Other Governmental Units	1,094,282.06	0.00	0.00	0.00	0.00	0.00	1,094,282.06
Accounts Receivable	32,252.54	0.00	0.00	0.00	0.00	0.00	32,252.54
Interfund Loans Receivable	0.00	0.00	0.00	0.00	0.00	0.00	0.00
Accrued Interest Receivable	0.00	0.00	0.00	0.00	0.00	0.00	0.00
Inventory	335,712.10	0.00	0.00	0.00	0.00	0.00	335,712.10
Prepaid Items	206,493.37	11,665.69	0.00	0.00	0.00	0.00	218,159.06
Investments	0.00	0.00	0.00	0.00	0.00	0.00	0.00
Investments/Cash With Trustee	0.00	0.00	0.00	0.00	0.00	0.00	0.00
Investments-Deferred Compensation	0.00	0.00	0.00	0.00	0.00	0.00	0.00
Self-Insurance Security Deposit	0.00	0.00	0.00	0.00	0.00	0.00	0.00
TOTAL ASSETS	22,657,991.11	1,196,344.85	10,043,747.78	10,212,089.87	609,639.85	0.00	44,719,813.46
DEFERRED OUTFLOWS OF RESOURCES:							
Deferred Outflows of Resources - Other	0.00	0.00	0.00	0.00	0.00	0.00	0.00
TOTAL DEFERRED OUTFLOWS OF RESOURCES	0.00	0.00	0.00	0.00	0.00	0.00	0.00
TOTAL ASSETS AND DEFERRED OUTFLOWS OF RESOURCES	22,657,991.11	1,196,344.85	10,043,747.78	10,212,089.87	609,639.85	0.00	44,719,813.46
LIABILITIES							
Accounts Payable	1,240,320.99	58,814.97	0.00	520,758.00	0.00	0.00	1,819,893.96
Contracts Payable Current	0.00	0.00	0.00	0.00	0.00	0.00	0.00
Accrued Interest Payable	0.00	0.00	0.00	0.00	0.00	0.00	0.00

	General Fund	ASB Fund	Debt Service Fund	Capital Projects Fund	Transportation Vehicle Fund	Permanent Fund	Total
Accrued Salaries	181,778.82	0.00	0.00	0.00	0.00	0.00	181,778.82
Anticipation Notes Payable	0.00		0.00	0.00	0.00		0.00
LIABILITIES:							
Payroll Deductions and Taxes Payable	260,493.22	0.00	0.00	0.00	0.00	0.00	260,493.22
Due To Other Governmental Units	0.00	0.00	0.00	0.00	0.00	0.00	0.00
Deferred Compensation Payable	0.00			0.00			0.00
Estimated Employee Benefits Payable	0.00						0.00
Due To Other Funds	0.00	61.39	0.00	48,841.43	0.00	0.00	48,902.82
Interfund Loans Payable	0.00		0.00	0.00	0.00		0.00
Deposits	5,255.00	0.00		0.00			5,255.00
Unearned Revenue	0.00	0.00	0.00	0.00	0.00		0.00
Matured Bonds Payable			0.00				0.00
Matured Bond Interest Payable			0.00				0.00
Arbitrage Rebate Payable	0.00		0.00	0.00	0.00	0.00	0.00
TOTAL LIABILITIES	1,687,848.03	58,876.36	0.00	569,599.43	0.00	0.00	2,316,323.82
DEFERRED INFLOWS OF RESOURCES							
Unavailable Revenue	0.00	0.00	0.00	0.00	0.00	0.00	0.00
Unavailable Revenue - Taxes Receivable	7,445,827.18		6,159,252.57	0.00	0.00		13,605,079.75
TOTAL DEFERRED INFLOWS OF RESOURCES	7,445,827.18	0.00	6,159,252.57	0.00	0.00	0.00	13,605,079.75
FUND BALANCE:							
Nonspendable Fund Balance	542,205.47	0.00	0.00	0.00	0.00	0.00	542,205.47
Restricted Fund Balance	2,062,202.04	1,137,468.49	3,884,495.21	7,827,981.13	609,639.85	0.00	15,521,786.72
Committed Fund Balance	0.00	0.00	0.00	0.00	0.00	0.00	0.00
Assigned Fund Balance	3,546,979.91	0.00	0.00	1,814,509.31	0.00	0.00	5,361,489.22

REPORT F196

E.S.D. 101

COUNTY: 32 Spokane

Mead School District No. 354

Balance Sheet - Governmental Funds

August 31, 2022

RUN DATE: 11/1/2022

RUN TIME: 1:40:04 PM

	General Fund	ASB Fund	Debt Service Fund	Capital Projects Fund	Transportation Vehicle Fund	Permanent Fund	Total
Unassigned Fund Balance	7,372,928.48	0.00	0.00	0.00	0.00	0.00	7,372,928.48
TOTAL FUND BALANCE	13,524,315.90	1,137,468.49	3,884,495.21	9,642,490.44	609,639.85	0.00	28,798,409.89
TOTAL LIABILITIES, DEFERRED INFLOW OF RESOURCES, AND FUND BALANCE	22,657,991.11	1,196,344.85	10,043,747.78	10,212,089.87	609,639.85	0.00	44,719,813.46

	General Fund	ASB Fund	Debt Service Fund	Capital Projects Fund	Transportation Vehicle Fund	Permanent Fund	Total
REVENUES:							
Local	15,367,350.46	1,786,966.65	13,257,335.93	134,547.14	20,953.68		30,567,153.86
State	116,905,471.66		0.00	1,738,633.52	573,309.84		119,217,415.02
Federal	15,078,907.19		0.00	0.00	0.00		15,078,907.19
Other	52,898.49		0.00	0.00	0.00	0.00	52,898.49
TOTAL REVENUES	147,404,627.80	1,786,966.65	13,257,335.93	1,873,180.66	594,263.52	0.00	164,916,374.56
EXPENDITURES:							
CURRENT:							
Regular Instruction	84,002,099.73						84,002,099.73
Special Education	20,213,760.44						20,213,760.44
Vocational Education	6,273,373.25						6,273,373.25
Skill Center	0.00						0.00
Compensatory Programs	5,230,660.89						5,230,660.89
Other Instructional Programs	325,558.75						325,558.75
Federal Stimulus COVID-19	4,737,733.38						4,737,733.38
Community Services	283,667.70						283,667.70
Support Services	28,247,656.52						28,247,656.52
Student Activities/Other		1,750,847.52				0.00	1,750,847.52
CAPITAL OUTLAY:							
Sites				134,593.78			134,593.78
Building				3,453,911.38			3,453,911.38
Equipment				1,673,007.10			1,673,007.10
Instructional Technology				0.00		0.00	0.00
Energy				0.00			0.00
Transportation Equipment					565,695.51		565,695.51
Sales and Lease				0.00			0.00
Other	58,835.09						58,835.09
DEBT SERVICE:							
Principal			5,040,000.00	0.00	0.00		5,040,000.00

	General Fund	ASB Fund	Debt Service Fund	Capital Projects Fund	Transportation Vehicle Fund	Permanent Fund	Total
Interest and Other Charges	0.00		7,866,026.58	0.00	0.00		7,866,026.58
Bond/Levy Issuance				0.00	0.00		0.00
TOTAL EXPENDITURES	149,373,345.75	1,750,847.52	12,906,026.58	5,261,512.26	565,695.51	0.00	169,857,427.62
REVENUES OVER (UNDER) EXPENDITURES	-1,968,717.95	36,119.13	351,309.35	-3,388,331.60	28,568.01	0.00	-4,941,053.06
OTHER FINANCING SOURCES (USES) :							
Bond Sales & Refunding Bond Sales	0.00		0.00	0.00	0.00		0.00
Long-Term Financing	0.00		0.00	0.00	0.00		0.00
Transfers In	0.00		0.00	0.00	0.00		0.00
Transfers Out (GL 536)	0.00		0.00	0.00	0.00		0.00
Other Financing Uses (GL 535)	0.00		0.00	0.00	0.00		0.00
Other	439,345.50		0.00	0.00	16,884.28		456,229.78
TOTAL OTHER FINANCING SOURCES (USES)	439,345.50		0.00	0.00	16,884.28	0.00	456,229.78
EXCESS OF REVENUES/OTHER FINANCING SOURCES OVER (UNDER) EXPENDITURES AND OTHER FINANCING USES	-1,529,372.45	36,119.13	351,309.35	-3,388,331.60	45,452.29	0.00	-4,484,823.28
BEGINNING TOTAL FUND BALANCE	15,053,688.35	1,101,349.36	3,533,185.86	13,030,822.04	564,187.56	0.00	33,283,233.17
Prior Year(s) Corrections or Restatements	0.00	0.00	0.00	0.00	0.00	0.00	0.00
ENDING TOTAL FUND BALANCE	13,524,315.90	1,137,468.49	3,884,495.21	9,642,490.44	609,639.85	0.00	28,798,409.89

	Sub-Fund 10	Sub-Fund 11	General Fund
REVENUES:			
Local	105,426.07	15,261,924.39	15,367,350.46
State	112,222,397.82	4,683,073.84	116,905,471.66
Federal	15,078,907.19	0.00	15,078,907.19
Other	13,075.47	39,823.02	52,898.49
TOTAL REVENUES	127,419,806.55	19,984,821.25	147,404,627.80
EXPENDITURES:			
CURRENT: (excluding Object 9)			
Regular Instruction	69,550,284.75	14,451,814.98	84,002,099.73
Special Education	19,907,550.12	306,210.32	20,213,760.44
Vocational Education	6,273,373.25	0.00	6,273,373.25
Skills Center	0.00	0.00	0.00
Compensatory Programs	4,646,456.42	584,204.47	5,230,660.89
Other Instructional Programs	265,376.42	60,182.33	325,558.75
Federal Stimulus COVID-19	4,737,733.38	0.00	4,737,733.38
Community Services	1,709.15	281,958.55	283,667.70
Support Services	23,688,958.72	4,558,697.80	28,247,656.52
CAPITAL OUTLAY:			
Other	58,835.09	0.00	58,835.09
DEBT SERVICE:			
Principal	0.00	0.00	0.00
Interest and Other Charges	0.00	0.00	0.00
TOTAL EXPENDITURES	129,130,277.30	20,243,068.45	149,373,345.75
REVENUES OVER (UNDER) EXPENDITURES:	-1,710,470.75	-258,247.20	-1,968,717.95
OTHER FINANCING SOURCES (USES):			
Bond Sales & Refunding Bond Sales		0.00	0.00
Long-Term Financing		0.00	0.00
Transfers In	0.00	0.00	0.00
Transfers Out (GL 536)	0.00	0.00	0.00
Other Financing Uses (GL 535)	0.00	0.00	0.00
Other		439,345.50	439,345.50

REPORT F196

Mead School District No. 354

RUN DATE: 11/1/2022

E.S.D. 101

Statement of Revenues, Expenditures, and Changes in Fund Balance - General Fund, By Sub-Fund

RUN TIME: 1:40:04 PM

COUNTY: 32 Spokane

For the Year Ended August 31, 2022

	Sub-Fund 10	Sub-Fund 11	General Fund
TOTAL OTHER FINANCING SOURCES (USES) :	0.00	439,345.50	439,345.50
EXCESS OF REVENUES AND OTHER FINANCING SOURCES OVER (UNDER) EXPENDITURES AND OTHER FINANCING USES	-1,710,470.75	181,098.30	-1,529,372.45
BEGINNING TOTAL FUND BALANCE	13,277,561.82	1,776,126.53	15,053,688.35
Prior Year(s) Corrections or Restatements	0.00	0.00	0.00
ENDING TOTAL FUND BALANCE	11,567,091.07	1,957,224.83	13,524,315.90

PROGRAM EXPENDITURE SUMMARY			ACTIVITY EXPENDITURE SUMMARY			OBJECT EXPENDITURE SUMMARY		
NO. PROGRAM TITLE	AMOUNT	NO. ACTIVITY TITLE	AMOUNT	NO. OBJECT TITLE	AMOUNT			
01 Basic Education	79,238,300.11	11 Bd of Dir	467,648.60	0 Debit Transfer	269,152.53			
02 ALE	4,725,666.08	12 Supt Off	430,813.56	1 Credit Transfer	-269,152.53			
03 Basic Education - Dropout Reengagement	38,133.54	13 Busns Off	1,504,355.66	2 Cert. Salaries	68,503,218.62			
11 Stim, Title, GEER	2,318,749.49	14 HR	817,315.09	3 Class. Salaries	23,139,760.80			
12 Stim, ESSER II	38,104.17	15 Pblc Rltn	215,088.10	4 Employee Benefits	35,179,526.86			
13 Stim, ESSER III	777,331.89	21 Supv Inst	2,936,253.97	5 Supplies / Materials	10,943,359.00			
14 Federal Stimulus, ESSER III (Learning Loss)	967,152.58	22 Lrn Resrc	425,842.90	7 Purchased Services	11,277,376.55			
18 Stim, RSVD N/A 20-21	0.00	23 Princ Off	8,587,671.06	8 Travel	271,268.83			
19 Federal Special Purpose - Other	636,395.25	24 Guid/Coun	4,658,257.81	9 Capital Outlay	58,835.09			
21 Sp Ed, Sup, St	18,053,732.47	25 Pupil M/S	917,904.36	TOTAL ALL OBJECTS	149,373,345.75			
22 Sp Ed, Infants and Toddlers, State	0.00	26 Health	6,847,583.30					
23 Sp Ed, Sup, IDEA, Fed	354,369.39	27 Teaching	86,750,295.69					
24 Sp Ed, Sup, Fed	1,805,658.58	28 Extracur	3,473,024.68					
25 Sp Ed, Infants and Toddlers, Federal	0.00	29 Fmt to SD	0.00					
26 Sp Ed, Inst, St	0.00	31 InstProDev	814,721.67					
29 Sp Ed, Oth, Fed	0.00	32 Inst Tech	2,054,164.37					
31 Voc, Basic, St	2,868,606.24	33 Curriculum	900,107.97					
34 MidSchCar/Tec	3,355,657.01	34 Pro Learn	731,335.04					
38 Voc, Fed	49,110.00	41 Supervisn	453,872.13					
39 Voc, Other	0.00	42 Food	2,093,896.58					
45 Skill Cnt, Bas, St	0.00	44 Operation	2,047,128.85					
46 Skill Cntr, Fed	0.00	49 Transfers	-9,898.30					
47 Skill Cnt, Fac Upgrade	0.00	51 Supervisn	749,980.04					
51 ESEA Disadvantaged, Fed	1,170,310.34	52 Operation	4,182,643.99					
52 Other Title, ESEA, Fed	708,633.54	53 Maintnce	1,076,981.46					
53 ESEA Migrant, Federal	0.00	56 Insurance	137,968.16					
54 Read First, Fed	0.00	58 Rem. Learn OP.	0.00					

FTE Enrollment Report
October 3, 2022

	Brentwood Elem	Colbert Elem	Creekside Elem	Evergreen Elem	Farwell	Meadow Ridge Elem	Midway Elem	Prairie View Elem	Shiloh Hills Elem	Skyline Elem	Highland Middle	Northwood Middle	Mountainside Middle	Mead High	Mt Spokane High	Total October 2022 Less AL	Budgeted #'s 22/23 Less AL	Difference
K Full Day	80.00	49.00	39.00	79.00	59.00	60.00	75.00	56.00	103.00	55.00						655.00	622.00	33.00
Grade 1	81.00	69.00	38.52	73.00	72.00	69.00	57.00	66.00	61.00	62.00						648.52	602.00	46.52
Grade 2	80.00	70.00	41.00	76.00	67.00	61.00	61.00	72.00	78.00	68.00						674.00	644.00	30.00
Grade 3	87.00	70.00	44.00	77.00	84.00	58.00	69.00	64.00	51.00	52.00						656.00	639.00	17.00
Grade 4	91.00	78.00	27.00	95.00	102.00	78.00	77.00	73.00	67.00	70.00						758.00	734.00	24.00
Grade 5	86.00	73.00	27.00	85.00	90.00	71.00	77.00	79.00	55.00	58.00						701.00	671.00	30.00
Grade 6											222.57	261.00	261.94			745.51	724.00	21.51
Grade 7											250.59	257.07	240.18			747.84	716.00	31.84
Grade 8											266.75	276.70	282.84			826.29	821.00	5.29
Grade 9														456.62	337.68	794.30	753.00	41.30
Grade 10														463.60	394.83	858.43	862.00	96.43
Grade 11														376.17	300.75	676.92	836.00	159.08
Grade 12														356.68	292.32	649.00	645.00	4.00
Total 10/2022	505.00	409.00	216.52	485.00	474.00	397.00	416.00	410.00	415.00	365.00	739.91	794.77	784.96	1653.07	1325.58	9390.81	9269.00	121.81

*Includes Open Doors & Gateway to College
22/23 Budgetec 10.00

HC	Nov Voc	Voc
19	17.66	0

TBIP	
K-6 HC	EXITED HC
214	45

Vocational	
Northwood	129.24
Mountainside	93.67
Highland MS	117.90
Total	340.81
Mead High School	185.67
Mt. Spokane HS	143.35
Total	329.02

FTE Summary-Monthly

Kindergarten	686.60
Grades 1-3	2,097.32
Grade 4	805.20
Grades 5-6	1,541.51
Grades 7-8	1,668.53
Grades 9-12	3,138.05
K-12 Total	9,937.21
Running Start	314.16
Open Doors	17.66
Grand Total	10,269.03

ALE	RADIATION ALLIANCE				TOTAL FTE
	MLO	MHS	MSHS	FTE	
k	31.60				31.60
1	36.40				36.40
2	35.00				35.00
3	47.40				47.40
4	47.20				47.20
5	40.80				40.80
6	54.20				54.20
7	51.00				51.00
8	43.40				43.40
9	43.80				43.80
10	43.60	2.00	3.00		48.60
11	31.80	3.00	3.00		37.80
12	40.20	13.00	16.00		69.20
	546.40	18.00	22.00		586.40

Running Start	Total	College Only	Non-Voc	Voc
October - June	141.00	65.00	122.11	4.04
Mead High School	146.00	73.00	131.44	4.30
Five Mile - MEPP	58.00	12.00	44.28	7.99
Total	345.00	150.00	297.83	16.33

22/23 Budgeted Running Start 302.00

22/23 Budgeted FTE 600

**Headcount Enrollment
10/3/2022**

	Brentwood Elem	Colbert Elem	Creekside Elem	Evergreen Elem	Farwell Elem	Meadow Ridge Elem	Midway Elem	Prairie View Elem	Shiloh Hills Elem	Skyline Elem	Highland Middle	Northwood Middle	Mountainside Middle	Mead Learning Options	Mead High School	Mt Spokane High	Total October 2022
K Full Day	80	49	39	79	59	60	75	56	103	55				32			687
Grade 1	81	69	39	73	72	69	57	66	61	62				37			686
Grade 2	80	70	41	76	67	61	61	72	78	68				36			710
Grade 3	87	70	44	77	84	58	69	64	51	52				48			704
Grade 4	91	78	27	95	102	78	77	73	67	70				48			806
Grade 5	86	73	27	85	90	71	77	79	55	58				42			743
Grade 6											224	262	265	56			807
Grade 7											251	261	243	52			807
Grade 8											267	279	286	44			876
Grade 9														44	457	339	840
Grade 10														44	466	397	907
Grade 11														51	425	386	862
Grade 12														59	395	377	831
Total 10/2022	505	409	217	485	474	397	416	410	415	365	742	802	794	593	1743	1499	10266

		GRADUATION ALLIANCE			TOTAL HC
		MLO	MHS	MSHS	
ALE	HC	HC	HC	HC	
k	32				32
1	37				37
2	36				36
3	48				48
4	48				48
5	42				42
6	56				56
7	52				52
8	44				44
9	44				44
10	44	2	3	49	49
11	51	3	3	57	57
12	59	13	16	88	88
TOTAL	593	18	22	633	

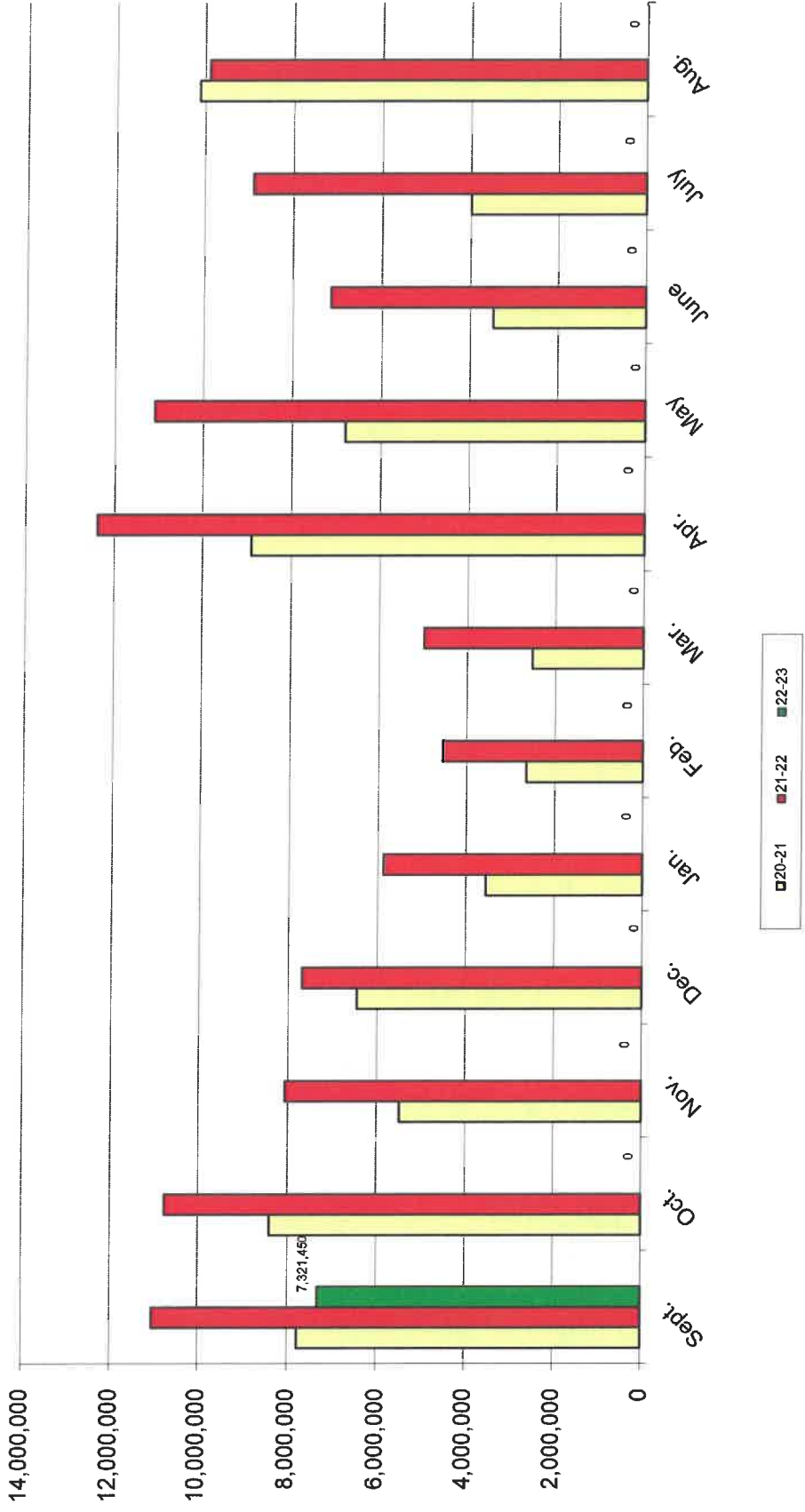
MEAD SCHOOL DISTRICT #354
GENERAL FUND

CASH FLOW SCHEDULE

SEPTEMBER 1, 2022 TO AUGUST 31, 2023

MONTH	TAX COLLECTIONS	STATE APPORTIONMENT	OTHER REVENUE	TOTAL RECEIPTS	ACCOUNTS PAYABLE	PAYROLL	TOTAL DISBURSEMENT	TRANSFER OTHER FUND	INTER-FUND LOAN	CASH & INVESTMENT BALANCE
Beginning Cash 9/1/2022										
9/30/2022										13,259,417
Estimate:										
ACTUAL:	307,388	11,629,880	531,726	12,468,994	3,805,504	11,226,700	15,032,203			10,696,208
10/31/2022										
Estimate:										
ACTUAL:				0			0			10,696,208
11/30/2022										
Estimate:										
ACTUAL:				0			0			10,696,208
12/31/2022										
Estimate:										
ACTUAL:				0			0			10,696,208
1/31/2023										
Estimate:										
ACTUAL:				0			0			10,696,208
2/28/2023										
Estimate:										
ACTUAL:				0			0			10,696,208
3/31/2023										
Estimate:										
ACTUAL:				0			0			10,696,208
4/30/2023										
Estimate:										
ACTUAL:				0			0			10,696,208
5/31/2023										
Estimate:										
ACTUAL:				0			0			10,696,208
6/30/2023										
Estimate:										
ACTUAL:				0			0			10,696,208
7/31/2023										
Estimate:										
ACTUAL:				0			0			10,696,208
8/31/2023										
Estimate:										
ACTUAL:				0			0			10,696,208
Total Actual	\$307,388	\$11,629,880	\$531,726	\$12,468,994	\$3,805,504	\$11,226,700	\$15,032,203			\$10,696,208

**Revised Year-to-Year Comparison of Net Cash Balance
Less Assigned Fund Balance**



Projection of Year-End Net Cash Balance

14000000

Mead School District No 354
Budget Status Report
Fiscal Year 2022-23
September 01, 2022 through September 30, 2022

General Fund

<input type="checkbox"/> Include Pre Encumbrance	ANNUAL BUDGET	ACTUAL FOR DATE RANGE	ACTUAL FOR YEAR	ENCUMB	BALANCE	% USED
A. Revenue						
1000 Local Taxes (+)	16,862,540.00	307,388.43	307,388.43		16,555,151.57	1.8%
2000 Local Support Nontax (+)	1,176,025.00	340,002.30	340,002.30		836,197.70	28.9%
3000 State, General Purpose (+)	101,033,242.00	8,692,630.05	8,692,630.05		92,340,611.95	8.6%
4000 State, Special Purpose (+)	23,448,575.00	1,977,955.09	1,977,955.09		21,470,619.91	8.4%
5000 Federal, General Purpose (+)	0.00	0.00	0.00		0.00	0.0%
6000 Federal, Special Purpose (+)	10,825,120.00	(39,937.63)	(39,937.63)		10,865,057.63	-0.4%
7000 Revenues Fr Oth Sch Dist (+)	50,000.00	0.00	0.00		50,000.00	0.0%
8000 Other Agencies & Associates (+)	0.00	0.00	0.00		0.00	0.0%
9000 Other Financing Sources (+)	0.00	3,500.00	3,500.00		(3,500.00)	0.0%
TOTAL Revenue	153,395,502.00	11,281,538.24	11,281,538.24		142,114,138.76	7.4%
B. Expenses						
00 Regular Instruction (-)	88,594,193.00	7,016,884.88	7,016,884.88	55,784,818.98	25,792,489.14	70.9%
10 Federal Stimulus (-)	1,468,821.00	47,306.65	47,306.65	520,825.78	900,688.57	38.7%
20 Special Ed Instruction (-)	21,254,344.00	1,771,047.80	1,771,047.80	13,649,546.90	5,833,749.30	72.6%
30 Vocational Ed Instruction (-)	6,347,208.00	406,799.47	406,799.47	3,023,693.93	2,916,714.60	54.0%
40 Skills Center Instruction (-)	0.00	0.00	0.00	0.00	0.00	0.0%
50 & 60 Compensatory Ed Instruction (-)	6,874,287.00	507,966.93	507,966.93	3,126,100.73	3,240,219.34	52.9%
70 Other Instructional Programs (-)	1,342,842.00	27,679.60	27,679.60	235,691.18	1,079,471.22	19.6%
80 Community Services (-)	255,227.00	20,516.66	20,516.66	121,574.83	113,135.51	55.7%
90 Support Services (-)	32,477,931.00	3,789,134.61	3,789,134.61	12,621,497.22	16,067,299.17	50.5%
TOTAL Expenses	158,614,853.00	13,587,336.60	13,587,336.60	89,083,749.55	55,943,766.85	64.7%
C. Other Fin Uses Trans Out	0.00	0.00	0.00	0.00	0.00	0.0%
D. Other Fin Uses	0.00	0.00	0.00	0.00	0.00	0.0%
E. EXCESS OF REVENUES/OTHER FIN. SOURCES OVER(UNDER) EXP/OTHER FIN USES (A-B-C-D)						
	(5,219,351.00)	(2,305,798.36)	(2,305,798.36)		86,170,371.91	(57.4%)
F. TOTAL BEGINNING FUND BALANCES						
	0.00		13,524,315.90			
G. G/L 898 PRIOR YEAR ADJUSTMENTS (+OR-)						
	XXXXXX		0.00			
H. TOTAL ENDING FUND BALANCE (E+F+/-G)						
	(5,219,351.00)		11,218,517.54			
I. ENDING FUND BALANCE ACCOUNTS						
G/L 810 Restricted for Other Items (-)	0.00		0.00			
G/L 821 Restricted for CO of Restricted Rev (-)	0.00		383,965.99			
G/L 828 Restricted for CO of F/S Rev (-)	0.00		1,678,236.05			
G/L 830 Restricted for Debt Service (-)	0.00		0.00			
G/L 835 Restricted For Arbitrage Rebate (-)	0.00		0.00			
G/L 840 Nonspnd FB - Inventory & Prepaid (-)	0.00		542,205.47			
G/L 870 Committed to Other Purposes (-)	0.00		0.00			
G/L 875 Assigned to Contingencies (-)	0.00		0.00			
G/L 888 Assigned to Other Purposes (-)	0.00		3,546,979.91			
G/L 891 Unassigned to Minimum FB Policy (-)	0.00		7,372,928.48			
G/L 898 PY Corrections or Restatements (-)	0.00		0.00			
G/L 890 Unassigned Fund Balance (H - I)	(5,219,351.00)		(2,305,798.36)			
TOTALS	(5,219,351.00)		11,218,517.54			

\$13,587,336.60	= .085%
\$158,614,853.00	

Mead School District No 354
Budget Status Report
Fiscal Year 2022-23
September 01, 2022 through September 30, 2022

Capital Projects Fund

<input type="checkbox"/> Include Pre Encumbrance	ANNUAL BUDGET	ACTUAL FOR DATE RANGE	ACTUAL FOR YEAR	ENCUMB	BALANCE	% USED
A. Revenue						
1000 Local Taxes (+)	0.00	0.00	0.00		0.00	0.0%
2000 Local Support Nontax (+)	60,000.00	11,218.84	11,218.84		48,781.16	18.7%
3000 State, General Purpose (+)	0.00	0.00	0.00		0.00	0.0%
4000 State, Special Purpose (+)	0.00	0.00	0.00		0.00	0.0%
5000 Federal, General Purpose (+)	0.00	0.00	0.00		0.00	0.0%
6000 Federal, Special Purpose (+)	0.00	0.00	0.00		0.00	0.0%
7000 Revenues Fr Oth Sch Districts (+)	0.00	0.00	0.00		0.00	0.0%
8000 Other Agencies & Associates (+)	0.00	0.00	0.00		0.00	0.0%
9000 Other Financing Sources (+)	0.00	0.00	0.00		0.00	0.0%
TOTAL Revenue	60,000.00	11,218.84	11,218.84		48,781.16	18.7%
B. Expenses						
10 Sites (-)	2,800,000.00	0.00	0.00	0.00	2,800,000.00	0.0%
20 Buildings (-)	2,350,000.00	(48,841.43)	(48,841.43)	315,061.95	2,083,779.48	11.3%
30 Equipment (-)	305,772.00	0.00	0.00	103,880.02	201,891.98	34.0%
40 Energy (-)	0.00	0.00	0.00	0.00	0.00	0.0%
50 Sale and Lease Expenditures (-)	0.00	0.00	0.00	0.00	0.00	0.0%
60 Bond/Levy Issuance (-)	0.00	0.00	0.00	0.00	0.00	0.0%
90 Debt (-)	0.00	0.00	0.00	0.00	0.00	0.0%
TOTAL Expenses	5,455,772.00	(48,841.43)	(48,841.43)	418,941.97	5,085,671.46	6.8%
C. Other Fin Uses Trans Out	0.00	0.00	0.00	0.00	0.00	0.0%
D. Other Fin Uses	0.00	0.00	0.00	0.00	0.00	0.0%
E. EXCESS OF REVENUES/OTHER FIN. SOURCES OVER(UNDER) EXP/OTHER FIN USES (A-B-C-D)						
	(5,395,772.00)	60,060.27	60,060.27		(5,036,890.30)	11.9%
F. TOTAL BEGINNING FUND BALANCES						
	7,845,821.00		9,642,490.44			
G. G/L 898 PRIOR YEAR ADJUSTMENTS (+OR-)						
	XXXXXX		0.00			
H. TOTAL ENDING FUND BALANCE (E+F+/-G)						
	2,450,049.00		9,702,550.71			
I. ENDING FUND BALANCE ACCOUNTS						
G/L 810 Restricted For Other items (-)	0.00		0.00			
G/L 830 Restricted For Debt Service (-)	0.00		0.00			
G/L 835 Restricted For Arbitrage Rebate (-)	0.00		0.00			
G/L 861 Restricted From Bond Proceeds (H-I)	(5,455,772.00)		7,876,822.56			
G/L 863 Restricted From State Proceeds (H-I)	0.00		0.00			
G/L 870 Committed to Other Purposes (-)	0.00		0.00			
G/L 889 Assigned to Fund Purposes (H-I)	7,905,821.00		1,825,728.15			
G/L 890 Unassigned Fund Balance (H - I)	0.00		0.00			
TOTALS	2,450,049.00		9,702,550.71			

Mead School District No 354
Budget Status Report
Fiscal Year 2022-23
September 01, 2022 through September 30, 2022

Debt Service Fund

<input type="checkbox"/> Include Pre Encumbrance	ANNUAL BUDGET	ACTUAL FOR DATE RANGE	ACTUAL FOR YEAR	ENCUMB	BALANCE	% USED
A. Revenue						
1000 Local Taxes (+)	14,063,760.00	253,861.67	253,861.67		13,809,898.33	1.8%
2000 Local Support Nontax (+)	0.00	0.00	0.00		0.00	0.0%
3000 State, General Purpose (+)	0.00	0.00	0.00		0.00	0.0%
5000 Federal, General Purpose (+)	0.00	0.00	0.00		0.00	0.0%
6000 Federal, Special Purpose (+)	0.00	0.00	0.00		0.00	0.0%
9000 Other Financing Sources (+)	0.00	0.00	0.00		0.00	0.0%
TOTAL Revenue	14,063,760.00	253,861.67	253,861.67		13,809,898.33	1.8%
B. Expenses						
Matured Bond Expenditures (-)	5,700,000.00	0.00	0.00	0.00	5,700,000.00	0.0%
Interest on Bonds (-)	7,656,888.00	0.00	0.00	0.00	7,656,888.00	0.0%
Interest on Interfund Loan (-)	0.00	0.00	0.00	0.00	0.00	0.0%
Bond Transfer Fees (-)	15,000.00	1,500.00	1,500.00	0.00	13,500.00	10.0%
TOTAL Expenses	13,371,888.00	1,500.00	1,500.00	0.00	13,370,388.00	0.0%
C. Other Fin Uses Trans Out	0.00	0.00	0.00	0.00	0.00	0.0%
D. Other Fin Uses	0.00	0.00	0.00	0.00	0.00	0.0%
E. EXCESS OF REVENUES/OTHER FIN. SOURCES OVER(UNDER) EXP/OTHER FIN USES (A-B-C-D)						
	691,872.00	252,361.67	252,361.67		439,510.33	1.8%
F. TOTAL BEGINNING FUND BALANCES						
	0.00		3,884,495.21			
G. G/L 898 PRIOR YEAR ADJUSTMENTS (+OR-)						
	XXXXXX		0.00			
H. TOTAL ENDING FUND BALANCE (E+F+/-G)						
	691,872.00		4,136,856.88			
I. ENDING FUND BALANCE ACCOUNTS						
G/L 810 Restricted For Other Items (-)	0.00		0.00			
G/L 835 Restricted For Arbitrage Rebate (-)	0.00		0.00			
G/L 870 Committed to Other Purposes (-)	0.00		0.00			
G/L 889 Assigned to Fund Purposes (-)	0.00		0.00			
G/L 890 Unassigned Fund Balance (-)	0.00		0.00			
G/L 830 Restricted For Debt Service (H - I)	691,872.00		4,136,856.88			
TOTALS	691,872.00		4,136,856.88			

Mead School District No 354
Budget Status Report
Fiscal Year 2022-23
September 01, 2022 through September 30, 2022

Associated Student Body Fund

<input type="checkbox"/> Include Pre Encumbrance	ANNUAL BUDGET	ACTUAL FOR DATE RANGE	ACTUAL FOR YEAR	ENCUMB	BALANCE	% USED
A. Revenue						
1000 General Student Body (+)	728,525.00	81,648.04	81,648.04		646,966.96	11.2%
2000 Athletics (+)	515,590.00	56,996.14	56,996.14		458,593.86	11.1%
3000 Classes (+)	542,670.00	84,928.55	84,928.55		457,741.45	15.7%
4000 Clubs (+)	96,025.00	3,519.75	3,519.75		92,505.25	3.7%
6000 Private Moneys (+)	151,300.00	1,690.00	1,690.00		149,610.00	1.1%
TOTAL Revenue	2,034,110.00	228,782.48	228,782.48		1,805,417.52	11.2%
B. Expenses						
1000 General Student Body (-)	663,973.00	53,528.58	53,528.58	5,981.70	604,462.72	9.0%
2000 Athletics (-)	911,000.00	49,456.41	49,456.41	27,872.47	833,671.12	8.5%
3000 Classes (-)	665,100.00	18,412.52	18,412.52	2,717.07	643,970.41	3.2%
4000 Clubs (-)	128,442.00	1,630.00	1,630.00	0.00	126,812.00	1.3%
6000 Private Moneys (-)	156,947.00	302.32	302.32	10.00	156,634.68	0.2%
TOTAL Expenses	2,525,462.00	123,329.83	123,329.83	36,581.24	2,365,550.93	6.3%
C. Other Fin Uses Trans Out	0.00	0.00	0.00	0.00	0.00	0.0%
D. Other Fin Uses	0.00	0.00	0.00	0.00	0.00	0.0%
E. EXCESS OF REVENUES/OTHER FIN. SOURCES OVER(UNDER) EXP/OTHER FIN USES (A-B-C-D)						
	(491,352.00)	105,452.65	105,452.65		(560,133.41)	4.9%
F. TOTAL BEGINNING FUND BALANCES						
	987,601.00		1,137,468.49			
G. G/L 898 PRIOR YEAR ADJUSTMENTS (+OR-)						
	XXXXXX		0.00			
H. TOTAL ENDING FUND BALANCE (E+F+/-G)						
	496,249.00		1,242,921.14			
I. ENDING FUND BALANCE ACCOUNTS						
G/L 810 Restricted For Other Items (-)	0.00		0.00			
G/L 840 Nonspnd FB - Invent/Prepd Itms (-)	0.00		0.00			
G/L 850 Restricted For Uninsured Risks (-)	0.00		0.00			
G/L 870 Committed to Other Purposes (-)	0.00		0.00			
G/L 888 Assigned to Fund Purposes (-)	0.00		0.00			
G/L 890 Unassigned Fund Balance (-)	0.00		0.00			
G/L 819 Restricted For Fund Purposes (H - I)	496,249.00		1,242,921.14			
TOTALS	496,249.00		1,242,921.14			

Mead School District No 354
Budget Status Report
Fiscal Year 2022-23
September 01, 2022 through September 30, 2022

Transportation Vehicle Fund

<input type="checkbox"/> Include Pre Encumbrance	ANNUAL BUDGET	ACTUAL FOR DATE RANGE	ACTUAL FOR YEAR	ENCUMB	BALANCE	% USE
A. Revenue						
1000 Local Taxes (+)	0.00	0.00	0.00		0.00	0.0%
2000 Local Support Nontax (+)	2,500.00	687.04	687.04		1,812.96	27.5%
3000 State, General Purpose (+)	0.00	0.00	0.00		0.00	0.0%
4000 State, Special Purpose (+)	594,937.00	0.00	0.00		594,937.00	0.0%
5000 Federal, General Purpose (+)	0.00	0.00	0.00		0.00	0.0%
8000 Other Agencies and Assoc. (+)	0.00	0.00	0.00		0.00	0.0%
9000 Other Financing Sources (+)	0.00	0.00	0.00		0.00	0.0%
TOTAL Revenue	597,437.00	687.04	687.04		596,749.96	0.1%
B. Expenses						
Type 30 Equipment (-)	1,100,000.00	0.00	0.00	0.00	1,100,000.00	0.0%
Type 60 Bond Levy Issuance (-)	0.00	0.00	0.00	0.00	0.00	0.0%
Type 90 Debt (-)	0.00	0.00	0.00	0.00	0.00	0.0%
TOTAL Expenses	1,100,000.00	0.00	0.00	0.00	1,100,000.00	0.0%
C. Other Fin Uses Trans Out	0.00	0.00	0.00	0.00	0.00	0.0%
D. Other Fin Uses	0.00	0.00	0.00	0.00	0.00	0.0%
E. EXCESS OF REVENUES/OTHER FIN. SOURCES OVER(UNDER) EXP/OTHER FIN USES (A-B-C-D)						
	(502,563.00)	687.04	687.04		(503,250.04)	0.1%
F. TOTAL BEGINNING FUND BALANCES						
	592,633.00		609,639.85			
G. G/L 898 PRIOR YEAR ADJUSTMENTS (+OR-)						
	XXXXXX		0.00			
H. TOTAL ENDING FUND BALANCE (E+F+/-G)						
	90,070.00		610,326.89			
I. ENDING FUND BALANCE ACCOUNTS						
G/L 810 Restricted For Other Items (-)	0.00		0.00			
G/L 830 Reserved For Debt Service (-)	0.00		0.00			
G/L 889 Assigned to Fund Purposes (-)	0.00		0.00			
G/L 890 Unassigned Fund Balance (-)	0.00		0.00			
G/L 819 Restricted For Fund Purposes (H - I)	90,070.00		610,326.89			
TOTALS	90,070.00		610,326.89			