



FLORENCE BIG RED BAND

Band Handbook

2022-2023

Beau Robinson, Director of Bands

Nick Papania, Assistant Band Director

Josh Menard, Percussion / Assistant Director

Florence High School Music Program

Welcome to the Florence High School Band. Each year, the Florence High School Band has the potential to be a great band if we choose to be. With the enthusiasm and dedication of the students, I would like to take this band to the next level. It is my hope that you make many friendships in the band, make many memories, and feel a sense of pride as a result of your accomplishments. Pride is an integral part of the band. You should be able to walk away from this experience saying, "I was a part to the Florence High School Big Red Band!"

By accepting membership into the Florence High School Band, you agree to perform to the best of your abilities and work hard together with the band staff to make this year's band the finest musical organization that our combined efforts can produce.

You are expected to:

Report consistently and on time to all rehearsals and performances. Students must be in the right place at the right time; in the proper dress or uniform with music, instrument, and/or other required equipment; and ready to put forth their best effort to create a fine product.

Practice with hard work and dedication.

Cooperate fully with your leaders, knowing that you will be held accountable for your actions and your contribution to the success of this organization.

Commit financially. Band dues are vital to making this program successful; therefore, they must be paid and paid on time.

Enthusiasm and hard work on your part can take this band to the next level. Let's make this a year to remember!

Sincerely,

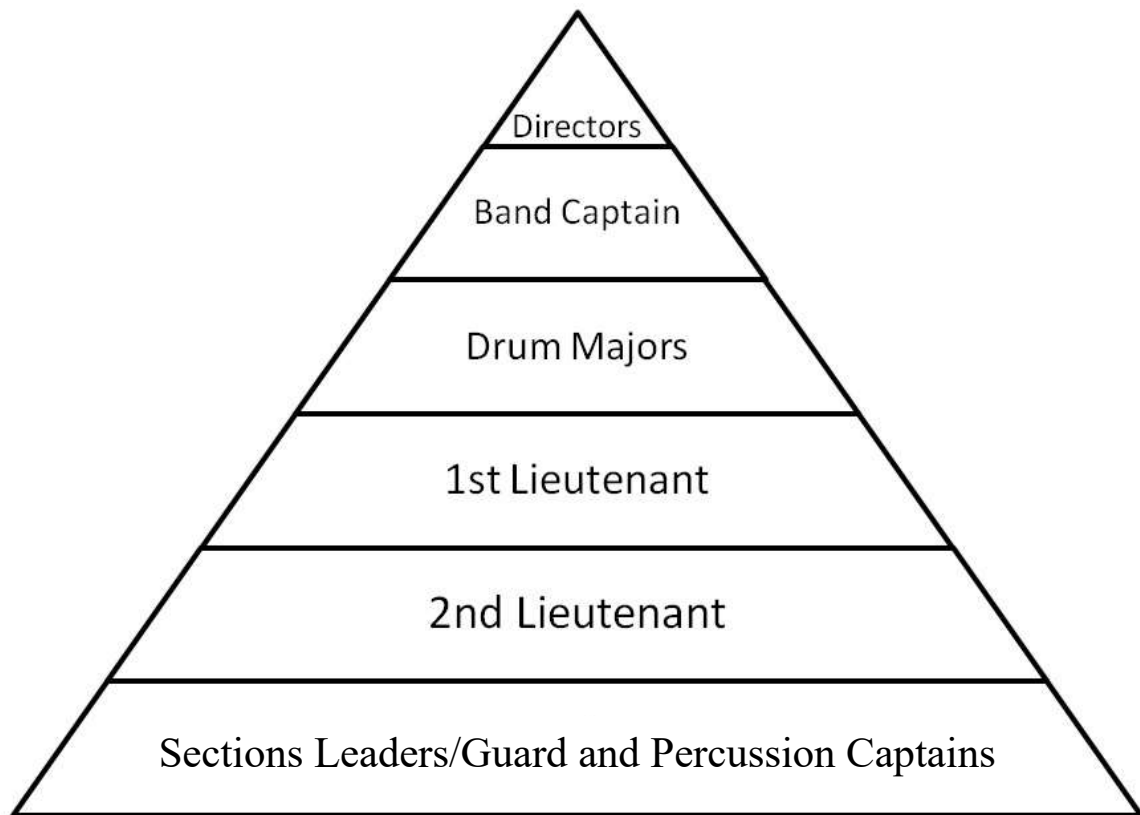
Beau Robinson
Director of Bands
Edw201@rcsd.ms
(601)829-6946

Josh Menard
Percussion/Assistant Band Director
Jos509@rcsd.ms

Nick Papania
Assistant Band Director
Nic510@rcsd.ms

Band Chain of Command

The leadership structure of the Big Red Band is set up in a hierarchy. Any issues that arise should be taken care of at the lowest level possible! Something should never come to the band directors if it could have been handled by a section leader.



The Directors and Instructors will work very hard to make this the best year for all of you. We ask that you cooperate with us by working hard, being on time, listening, and pushing yourselves to greatness, while enjoying your time in the band and making memories. Remember, we are there to help you achieve excellence.

Discipline

The Directors want this band to be very proud of who they are and what they accomplish. This pride should be built on self-discipline, sincere respect for other people, hard work, and high standards of personal conduct and performance. You should always be mindful that you will be treated as a mature, responsible person, and you are expected to act like one. Also, you will be treated with respect, so you should likewise treat others with respect. You will be held accountable for your own actions.

As a representative group of Florence High School, the band must follow the school discipline code. These rules are included in this handbook and may also be obtained through the Band Office.

Disrespect to any staff member, parent volunteer, or fellow student will not be tolerated and will result in disciplinary action. Do not question the staff, directors or parents! What they say is the law! They are there for your benefit.

Students are to be at designated areas during all practices and activities on time. Any departures or absences, without prior permission from the Band Director, are grounds for disciplinary actions.

Disciplinary options for The Florence High School Big Red Band members include, but are not limited to:

1. Lowering of Grade
2. Parent conferences
3. Those found in the School Disciplinary Code
4. Dismissal from the Florence High School Big Red Band

The following are a few reasons for dismissal from the band program: Drug or alcohol violation of any kind and consistent absents.

Attendance Policy

In order for this Band to achieve greatness, it is important that we use our practice time wisely. Your commitment to this band will be directly affected by your attendance and preparation for each Scheduled Band Activity (SBA). An SBA is an activity that is scheduled on the calendar. SBA's include rehearsals and performances. If changes are required, we will do our best to give you ample notice. The attendance policy will go into effect upon the **first day of Band Camp**. The band as a whole is like a chain; one weak link will cause the chain to break and the band will fall short of its goals. Each person in the band is important, and it is essential to be present at each SBA.

There are unavoidable absences. These must be cleared at least one week in advance with the Director. The only event that will be permitted after the absence is an emergency. An absence will be considered excused if:

- You have a medical emergency, accompanied by a physician's note
- There is a death in your family
- You have a personal illness, accompanied by a physician's note
- An unavoidable academic or school related conflict at Florence High School

If at all possible, please let us know when an emergency occurs, so we do not worry or wonder where you are.

The following procedures will be followed for absences from an after-school rehearsals:

One unexcused absence will result in a 50 out of 100 summative grade. Examples of unexcused absences are homework, work, practices that were not approved, going to sporting events, etc. Practices are not scheduled as punishment, but to make you better, and all rehearsals are equally important.

If a student is absent (unexcused) from school on a Friday of a football game, that student may not participate in said football game. This will result in an unexcused absent from a performance.

If absent you **MUST** bring a signed note to the next practice, no later. The note must be submitted for the absence to be excused. If you do not bring a note your absence will be unexcused.

The following procedures will be followed for absences from performances:

One unexcused absence will result in a 0 summative grade in the grade book.

A second unexcused absence will result in a removal from the band program.

Any student missing any portion of Band Camp without a prior notice to Mr. Robinson will be subject to immediate removal from the show and/or removal from the program. These practices are imperative, because this is when we will learn the majority of the show. If you miss these practices, you will fall behind. **Parents, please plan vacation around Band Camp.**

Tardiness to or unapproved early dismissal from rehearsal is grounds for disciplinary action. More than three tardies or leaving early will be grounds for parent conference. Consistent tardiness to rehearsals and performances impedes the flow of the band's progress and negatively affects the morale of the organization.

In the event that a student belongs to an out of school related organization, **the Florence Big Red Band will take precedence.**

Employment is not an excuse for missing a rehearsal or a performance. Any student who misses a rehearsal or performance due to work will be charged with an unexcused absence and subject to the above attendance policies.

The attendance policies above apply to all Big Red Band rehearsals and performances, football games, parades, and special events.

Each student is expected to come to each rehearsal and performance prepared and ready to participate to the fullest of his or her ability. Any student that comes to a rehearsal or performance and does not actively participate will be subject to disciplinary action. This includes, but is not limited to: forgetting an instrument; not having a reed, mouthpiece, sticks, mallets, batons, or flags; not having music; or not having the correct shoes for marching, etc. (Students that have medical excuses or verified instrument repair issues will be exempt from penalty.)

School Owned Instruments

Students are expected to take excellent care of all equipment regardless of ownership. School Owned Instruments will be issued to specific members. Once issued, students are responsible for that instrument. If damaged, depending on the severity, students will be responsible for repairs. To cover minor damages, each student that will be using a school owned instrument (percussion included) must pay a rental fee of \$50 a semester. This fee helps to offset the expenses of maintenance from year to year.

Color Guard

To participate in the color guard, an incoming 9th grader or older may audition. Each student that makes the guard must pay a fee of \$200 to cover his or her uniform. This fee is in addition to their Fair Share/Band Dues. Each student must pay this fee before they receive their uniform. Students are also expected to complete a Color Guard Contract.

Band Hall Etiquette

The Band Hall is the home of our band. It is to be kept neat, clean, and clutter free.

Some Band Hall rules include.

- Gum Chewing will not be allowed as it damages the instruments. Gum can also damage the carpet, stands, and chairs in the band hall.
- Just as gum, food is also not allowed in the band hall as it can also damage horns and the band hall in the same way.
- As a member of the band, you are considered ladies and gentlemen. No profanity or profane language is to be used by members of the band.
- Fighting in any way is not to be tolerated in the band program.
- The instruments and members of the band are very important. So, no horseplay is to be carried out in the band hall.
- Only Band Members, Band Directors, Parents, and Administrators are allowed in the band hall.
- Our band hall is not only our home, but also part of the High School campus. No writing or drawing on any school property.
- Students have worked hard on their instrument to understand how to play and care for it. No one should play any instrument that is not your own.
- Only good attitudes (Leave your bad mood at the door.)
- Any clothes that are left in the floor are considered trash and will be disposed of. If you have something important take it with you.
- The Instrument cubbies are to be kept clean. No trash should be left in cubbies. Any loose paper may be disposed of.
- Any destruction of property will be paid for entirely by the student. If payment is not collected, a hold will be placed on that student's grade.

Destruction of property may include and is not limited to:

- Writing on walls
- Writing on stands
- Writing on chairs
- Any broken instruments due to horseplay or poor behavior

Rehearsal Etiquette

A well-defined and executed rehearsal technique has a direct impact on the success of the group. It is expected that all members adhere to the following rehearsal etiquette.

Be in the right place at the right time with the right equipment. You should have the following items with you at all rehearsals:

1. Instruments
 2. Pencil; you will need to make notes on your music and drill at every rehearsal. It is very difficult to remember everything from rehearsal to rehearsal.
 3. Drill Sheets!!!!!!
 4. Water jugs; this is very important. Marching Band is a physically taxing activity and you will need water. Members should have their own (school provide) water jug or bottle, especially in the summer months.
 5. All band members should dress comfortably and appropriately for all rehearsals. It is important for you to realize that we will be outside and moving at nearly every rehearsal. It is also up to you to watch the weather forecast and to dress for it. Appropriate clothing for rehearsals include: **t-shirts, shorts, sweats, and tennis shoes** (no sandals, dress shoes, or boots).
- In order to have the most productive rehearsals possible, the instructional staff has established guidelines for etiquette during rehearsals. The following guidelines are needed to keep order, and thus make efficient use of rehearsal time. At no time do we wish to convey a boot-camp type of atmosphere, but these few guidelines are absolutely necessary to avoid wasted time and undue lack of concentration.
 - Due to the large area in which we work, it is essential that the majority of the talking be limited to the staff. Corrections and instructions will come from the top of the stand first. The Drum Major may repeat the instructions for the continuation of rehearsal. Questions are expected and encouraged under proper circumstances; simply raise your hand.
 - When you are given a break, please take it!! **Do not play your instruments during scheduled breaks.**

Performance Etiquette

Do not be late. All times to perform or rehearse before a game, competition, or other event will be announced prior to the event.

Members should march to and from the stadium with pride. The uniform is to be worn PROPERLY at all times. Your performance begins as soon as we march to the stadium or get off the bus for a parade or competition. It does not end until the Director or Drum Major dismisses you. Do not break ranks until instructed to do so. When marching in ranks you should stand tall and proud. Do not let anyone outside of the band cut through the ranks. Do not talk when marching in rank!

You may not eat or drink in your uniform, except for water. Accidents may occur unexpectedly that may soil, stain, or permanently damage your uniform. You will be instructed at performances as to when it is appropriate to remove your band jacket and shako to get something to eat and drink.

While at a performance it is imperative that you sit with your designated section. This not only gives the band a uniform look, but also is crucial in maintaining a well-balanced and consistent sound.

Do not lean or sit on anything that will soil, tear, or snag your uniform.

Never run in uniform. There is always a possibility of falling and ripping the uniform. There is never a reason to run. If you plan ahead, you can always take your time to reach any destination required.

There are to be no visitors in the stands during a football game. Only current Florence High Big Red Band members, chaperones, instructors, and administrators are allowed in the band's stands. This is important from the standpoint of your safety. There will be no exceptions to this rule.

The general rule is that if you have any questions regarding whether you should or should not be doing something in uniform, **DO NOT DO IT!!** When you are wearing the uniform, you are not looked upon by others as an individual, but rather as a part of the Florence High Big Red Band. Most of the spectators and band members from other groups, who will see you behind the scenes, will form their opinion of the entire band from observing your behavior in uniform.

Dress attire at all concert performances will be dress black. Dress black is defined as formal black school appropriate clothes. Male students must wear a black collared shirt with black slacks. A white button down with a black vest or jacket is acceptable. Female students must wear either a black dress or suit. Attire must be school appropriate. Any student not in proper dress attire will not be allowed to perform and may be asked to change or leave.

PARENTS' RESPONSIBILITY TO THE BAND

It is the responsibility of every parent and guardian to see that the policies outlined in the HANDBOOK are followed and that the forms are signed and returned. This states that you UNDERSTAND the policies therein, and that any questions are to be directed to the Band Director by making an appointment. Each parent IS responsible for the attendance of his/her child at all band functions. It is the responsibility of each parent to ensure that their child practices his / her instrument daily. The hands of the directors are tied without the help of parents.

HOW PARENTS CAN HELP

When a “band question” arises, it is important that you get factual information before discussing it with others. We do more harm to ourselves, the band family, when we talk about things that contain one or more “falsehoods” but consider them facts. If questions arise, it is important to remember this axiom: If it is a performance issue or anything dealing with the band program, contact a Director. If it is a fundraising question or Band Dues question, talk with the Booster Club President.

- Show an interest in the music study of your child.
- Arrange a regular time for your child to practice.
- Find a quiet place where he/she can practice without interruption.
- Listen to performances of practice material when asked to do so.
- Help the student keep a DAILY RECORD of practicing.
- Initiate a reward system for DAILY practice.
- **Keep the instrument in good repair and keep at least three reeds in the case; get a metronome!**
- Be extra careful with school-owned instruments. Repair costs are high!
- **Pay Fair Share/Band Dues.** We cannot operate if these aren't paid in a timely manner.
- Teach your child to be prepared and on time to each rehearsal or lesson.
- Provide private instruction!
- **Make faithful attendance at all band activities a priority.**
- Buy your child a personal planner for marking important dates.
- Keep the Handbook in a safe place and refer to it often.
- Notify the teacher if the student is to be absent for rehearsals or lessons.
- Double-check behind the student to make sure that they have their instrument.
- If student is absent, make sure that their music gets to school if they share it with someone.
- **Attend booster meetings, concerts, games, and contests.**
- **Turn in fundraising money on time.**

As band directors, our door is always open to parents and students. If there is ever a concern about your child or the band in general, please come see a director. We will do anything we can to help.

Band Dues explained.

The band operates almost entirely independent of the finances of Florence High School. Therefore, the band has significant financial burden from year to year. This cost is passed on in the form of dues/fees to the students wishing to participate. Each student is required to pay **\$250 annually** in Band Dues. These dues/fees are considered their “fair share” of the cost and is shared by all members. Some of the items “fair share/band dues” pays for:

Travel/Trips/Competitions – The band does not receive compensation for travel to away games and our Marching Band and Concert Band evaluation. The band pays for all travel. These travel expenses include paying the driver(s) of the bus(es). The band also has to pay to participate or compete at any event we are attending. Further, we do not receive compensation for the transportation of the band trailer nor maintenance, upkeep or fuel to move it.

Marching Band Staff – Teaching a marching band show requires the expertise of trained staff members to make for a high-quality product that we are committed to producing.

Show – Each year, we purchase/pay for the materials necessary to create a marching band show to include: Music, Drill, Choreography, Copyrights and props if needed.

Music – From stand tunes to concert music, all must be purchased to play. The school does provide some financial help here. Although there is assistance, music is expensive. The band typically uses what money is provided and then some just to get us through the year.

Instruments/Maintenance – Maintenance and care for our instruments is incredibly limited. The district does provide a small amount of money for instrument maintenance and is used up prior to accessing any band funds for this. The district does provide financial contribution to the purchase of instruments each year and it is used to replenish needs or plan for future needs.

Uniforms – Uniform (Jacket and Shako) upkeep and modifications are paid entirely by the band. Bibbers and Guard uniforms are considered consumable by the members and are paid for entirely by the members aside from Dues. When new Uniforms are needed, they are very expensive.

Booster Needs – The boosters have a number of expenses they need to cover in order to provide for the needs of the band. This includes software for accounting, office supplies, and maintenance of booster equipment. These needs are limited.

Food – The band covers feeding the students in as many instances as possible. There are a lot of kids...there is a lot of food.

Stay Connected!

There are a few ways to stay updated with upcoming event, news, and other important information. All information will be told to your student as well as sent out via remind.

1. Your Student – Students are told ALL information that is uploaded to Remind, Facebook, and Band Website. They are your best source of information.
2. Remind – Remind is a text messaging service that allows Directors to send out important information directly to students and parent’s phones. **We strongly recommend joining.**
 - a. Codes vary by graduation class (see band website for codes).
3. Official Big Red Band Facebook Page –This serves as public page for directors to post pictures or videos of the band.
4. Booster Facebook Page – The Booster’s Facebook page is where you can upload your own pictures as well as find information regarding fundraisers.
5. Band Website – The Band website stays updated with all upcoming events and also has a copy of this handbook.
6. Booster Meetings – Every band parent is considered a member of the FHS Band Boosters. The Boosters meet every third Thursday of the month at 7pm. All parents are welcome and encouraged to attend.



Band Website



Official Band
Facebook Page



Band Booster
Facebook Page

Band Camp Schedule 2022 - 2023

July 6 - 8 - **Percussion**

July 11 - 12 - **Guard and Percussion only**

July 13 - **Freshmen, Guard, Percussion, and LT only**

July 14 - Morning - **Freshmen, Guard, Percussion and LT Only**

Afternoon - **All Band Members**

July 15 - **All Band Members**

July 18 - 22 - **All Band Members**

TBA - Shoe and Bib Day (All Freshmen and new Band members will need Shoes and Bibs.)

Rehearsal time: 8am - 5pm

Lunch Daily (not provided): 11:30am - 1pm

1st 1/2 of Band Dues Due 1st day of Band Camp. (Balance must be at or below \$125. Students will not be in the marching show if balance is above \$125. NO EXCEPTION)

Guard uniform fees are due before uniforms will be given out. (Students will not be allowed to perform until paid.)

Tentative Schedule

Fall 2022

After School every Monday & Thursday 3:25 – 5:00

Parent/Booster Meeting every third Thursday of the Month at 7pm.

TBA – Meet the Eagles (attendance required)

August 26 – Football vs. Pelahatchie

September 2 – Football @ Richland

September 9 – Football @ Magee

TBA – Homecoming Parade

September 15– Homecoming vs Jim Hill

September 23 – Football vs. Laurel

September 24 – C.D. Hagan Invitational (Brandon H.S.)

September 30 – Football @ Wayne County

October 1 – Titan Marching Invitational (Ridgeland H.S.)

October 7 – Football vs. Hattiesburg

October 8 – State Marching Festival (Pearl H.S.)

October 14 - Football @ West Jones

October 21 – Football vs. Brookhaven

October 28 – Football @ South Jones

October 29 – State Marching Championships (Location TBA)

November 4 – Football vs. Natchez

November 11 – Playoff Game – TBA

November 18 – Playoff Game – TBA

November 25 – Football: South State - TBA

December 6 – Christmas Concert

TBA – Christmas Parade

Tentative Spring Dates

March 10 – 12 – Branson Trip

March 6 - 9 – MHSAA Concert Band Evaluation

Future Band Camp Dates:

2023 - 2024: July 10 – 14 & July 17 – 21

2024 – 2025: July 15 – 19 & 22 - 26

Commitment Contract

I have read the Florence High School Band Handbook and understand the rules, regulations, and attendance policy. I have noted the performance and rehearsal schedule and have included them in my personal schedule. I understand that participation in Marching Band requires mandatory attendance at band camp, rehearsals and performances. I understand that music and choreography must be memorized. I understand that if I do not meet these obligations, I will not be guaranteed a spot in the marching band show. I realize that I may be dismissed from Marching Band or Concert Band for poor attendance or unexcused tardiness. **I understand Band Dues/Fair Share (\$250.00) must be paid in a timely fashion.** I realize the importance of this commitment and agree to abide by these conditions for the 2022 - 2023

Student Signature: _____

Parent Signature: _____

Date: _____

Please Return

**FLORENCE HIGH SCHOOL BAND, FLORENCE, MS
2022 – 2023 MEDICAL INFORMATION FORM**

STUDENT _____

SEX (M) (F) BIRTH DATE / / INSURANCE CARRIER: _____

PARENTS _____ POLICY #: _____

.....
PLEASE COMPLETE THE QUESTIONS BELOW. It is imperative that we have medical information in order that we may care for the student in case of emergency.

1. **DOES THE STUDENT HAVE CHRONIC HEALTH PROBLEMS?** _____

2. **IS THE STUDENT ALLERGIC TO ANY MEDICINES?** _____

3. **DOES HE / SHE HAVE ALLERGIES?** _____

4. **IS HE / SHE CURRENTLY TAKING ANY MEDICATIONS?** _____

5. **WHAT IS THE DATE OF THE STUDENT'S LAST TETANUS SHOT?** _____

6. **PLEASE LIST ANY ADDITIONAL PERTINENT INFORMATION** _____

FAMILY PHYSICIAN _____

TELEPHONE & ADDRESS _____

In case of minor illness, the Florence High School Band Director or chaperones of the Band Boosters have my permission to give over-the-counter drugs such as Tylenol, Maalox, Sudafed, Ibuprofen, or Dramamine to my son / daughter.

YES _____ NO _____

Please Return

**FLORENCE HIGH SCHOOL BAND, FLORENCE, MS
2022 - 2023 CONSENT FOR MEDICAL TREATMENT**

TO WHOM IT MAY CONCERN, I, the undersigned parent or guardian of:

Name of Student

Date of Birth

Hereby grant authorization to the Band Director or any chaperone of the Florence Band Boosters standing in loco parentis, to obtain any emergency medical and/or surgical procedures from a physician or hospital emergency room physician on behalf of the above-named minor. For and in consideration of emergency services and goods rendered by or through the attending physician(s), the undersigned hereby guarantees payment in full, immediately upon receipt of the final billing.

Signature _____ Date / /

Parent's Printed Name _____

ALTERNATE TO NOTIFY IN CASE OF EMERGENCY

Name _____

Relationship _____ Phone _____

City _____ State _____ Zip _____

Please Return

Rankin County RECURRING FIELD TRIP PERMISSION FORM

Dear Parent or Guardian:

Because of your child's involvement with band, he / she will be taking part in a series of field trips during the course of the year. An agenda of scheduled trips is contained in the Band Handbook.

All special activity trip regulations, local school rules, as well as those outlined in the Rankin County Students' Rights and Responsibilities brochure will be enforced.

Please be advised that the school will take every precaution to provide for the safety of your child on each trip. You are requested to grant permission for your child to attend and participate. You are also requested to relieve the school, the area and county boards, the administrators, the band director, and chaperones of liability for any accident that may occur on these trips.

**Beau Robinson
Director of Bands**

Dear Mr. Robinson,

**I grant permission for my child, _____,
to go on the trips associated with band according to the schedule in the Handbook
for the year. I relieve the school, the constituent and county boards, the
administrators, the band director, and chaperones of liability for any accident that
may occur.**

Parent or Guardian Signature

Date

Please Return

**FLORENCE HIGH SCHOOL BAND, FLORENCE, MS
2022 - 2023 MEDIA RELEASE FORM**

Florence High School Band may develop, participate in, or be the subject of media-based presentations and events, which highlight various educational activities that take place during the course of the year. These presentations/events are of two types:

- 1. Those developed by Florence High School students, Florence High School Staff, F.H.S. personnel and/or commercial enterprises. They may include but are not limited to;**
 - **Photographs of students and activities**
 - **Slide/tape presentations**
 - **Video of students and activities**
 - **Computer-generated presentations which may incorporate scanned photographs and video clips**
 - **Computer-based productions transmitted via telecommunications**

- 2. These media-based presentations may be used in:**
 - **Faculty and services**
 - **Parent programs**
 - **Staff development activities**
 - **Media festivals (local, state, and international)**
 - **Public relations**
 - **Newspaper articles**
 - **TV presentations**
 - **Florence School District Approved Internet web pages**

I hereby give my permission to Florence High School Band to publish my child's photograph and identification in as well as to publish my child's presentation (as listed above) in any of Florence School District's media-based productions for the above stated purposes.

Student's Name

Parent/Guardian Signature

Date

Please Return