



MISSION STATEMENT

In a community that fosters academic excellence, ethical responsibility, and global engagement, Pacific Ridge School prepares students for college and a purposeful life.

Head of School

Dr. Bob Ogle

Dean of College Guidance

Rachel E. Petrella

760.448.9842

rpetrella@pacificridge.org

Directors of College Guidance

Emily T. Moscol

760.448.9898

emoscol@pacificridge.org

Danny Irving

760.448.9881

dirving@pacificridge.org

Class of
2023
117 SENIORS

17 Recognized by
NATIONAL MERIT
SCHOLARSHIP
CORPORATION

100% hold a passport

83 compete on at least 1 PRS team

68 visual or performing artists

33 multilingual households*

18 speak English as a second language

7 first in their family to attend college

19 born outside the U.S.

*Arabic, Armenian, Chinese, Farsi, French, German, Gujarati, Hindi, Italian, Japanese, Korean, Marati, Portuguese, Serbian, Spanish, Tamil

AP 192 exams
99 Juniors
87 scores 3+
75 scores 4-5

Standardized Testing, Averages

SAT 1375

692
EBRW

681
MATH

ACT 32

ENGLISH 33
READING 33
MATH 31
SCIENCE 32

Testing data for current seniors is based on the small percentage taking the SAT (46) and/or the ACT (14). Pacific Ridge School is not a testing center.

STUDENTS & FACULTY

Pacific Ridge School draws students from over 20 San Diego County communities. Thirty-eight percent of students identify as a student of color.

3.8 million awarded in tuition assistance

7:1 student-to-teacher ratio

30% students receive tuition assistance

Pacific Ridge School maintains an average class size of 15, allowing talented and experienced teachers (70% with advanced degrees) to engage in working partnerships with students and extend the educational experience beyond the classroom.

THE SCHOOL

Founded in 2007, Pacific Ridge School is an independent, coeducational, college preparatory day school in Carlsbad, California, serving 685 students in grades 6-12. Accredited by WASC, Pacific Ridge School is a member of NAIS, CAIS, the College Board, the ERB, NACAC, WACAC, and ACCIS.

GRADUATION & DIPLOMA REQUIREMENTS

Pacific Ridge School's curriculum and graduation requirements exceed those of the State of California diploma and UC/CSU eligibility. All courses required for graduation must be completed on the Pacific Ridge campus.

- English: 4 years
- Math: 3 years (Geometry through Algebra 2 /Trigonometry)
- History: 3 years (Ancient & Modern World History, U.S. History)
- Science: 3 years (Integrated Biology & Chemistry I & II)
- Language: 3 years of same language in Upper School
- Arts: 2 years
- Health: 1 trimester, PE/Athletics: 5 trimesters
- Service Learning: 2 years
- Sophomore & Junior Project & Senior Signature



GRADE-LEVEL EXPERIENCES

9 Grade 9 students choose a topic of importance to them, research, craft and deliver an **oration** to their entire grade. Finalists are chosen by each advisory to present to the Upper School, faculty, administration, and the Board of Trustees. The Class of 2023 presented on topics ranging from the psychological benefits of laughter to the challenges of remote learning, as they tackled this tradition over Zoom, during the lockdown of 2020. Prior to the pandemic, the class created a **MUSEum** to showcase the breadth of interests that inspire them.

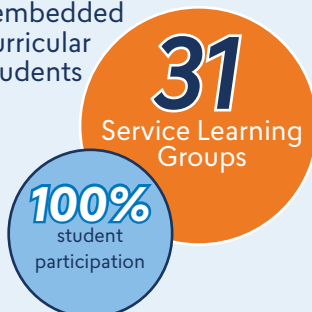
10 Grade 10 students connect their understanding with memorials by researching a historically significant topic and exploring how the dominant narrative may have relegated important, lesser-known persons or events to footnotes. The **Memorial Project** culminates in a public art gallery created to stoke curiosity about the intersectionality of art, history, and social movements as expressed in displays introducing everything from seed theories to unsung innovators.

11 **Junior Project** encourages 11th graders to look to the future. Each junior is encouraged to identify an interview subject based on a field of interest, set a career-focused interview, ask questions to learn more about their subject's path and insights, then transcribe the experience into a presentation to educate the school community. Current seniors interviewed activists, local leaders in biotech, music & theater production, politics, and environmental conservation.

12 Seniors develop a solo or team project to reflect their emerging identities and share these with the community in presentations, installations, or performances. **Signatures** are designed to reflect and celebrate the various arcs of their development supported by the Pacific Ridge experience and include everything from garden design and spirit events to programs supporting students' health and well-being.

SERVICE LEARNING

77% of seniors collaborate in student-led service learning groups to advance solutions promoting equity, peace and social justice, leading change in health and education, science, innovation, and the environment. Our commitment to service learning is embedded in the 9th grade co-curricular and not required of students beyond 10th grade.



GLOBAL ENGAGEMENT

Global issues are woven into the curriculum with 2 weeks each spring devoted to field courses connecting curricula, service, and curiosity about key issues in travels with classmates and faculty.

GLOBAL TRAVEL PROGRAM

COUNTRIES VISITED 65 | 26 US CITIES VISITED

90% of Students Participate in Yearly Global Travel Program (on average)



ACADEMIC PROGRAM & REPORTING

Deliberate curricular integration in instruction teaches students to draw connections across disciplines, which builds a broader understanding of themes, ideas, questions, and topics. Small classes taught around the Harkness table allow teachers to combine the best of one-on-one instruction with the dynamics of group discussion. Pacific Ridge operates on a final mastery grade system, whereby grades-in-progress are reported to students at 11-week, trimester intervals and only the final, transcript grade in each course is calculated in the cumulative GPA. Our Midyear Report to colleges in late January provides grade-in-progress as an average of Trimester 1 and Interim 2.

RANK IN CLASS & GPA

Pacific Ridge School does not rank students numerically due to the small size of each graduating class and the nature of an academic culture concentrated on fostering a life-long love of learning beyond the classroom. Each Senior's weighted grade-point average is reported by College Guidance in the Secondary School Report, submitted with the official transcript. Our GPA is based on all graded courses taken at Pacific Ridge grades 9-12, and each honors, AP, and post-AP honors course with a grade of C or higher is weighted one point.

COURSE OFFERINGS

Honors and AP coursework is available to students who have completed the appropriate prerequisites and have the recommendation of the faculty. Seniors enrolled in more than our **cap of 3 AP courses** have petitioned for and been granted an exception.

ENGLISH

English 9
 English 10
 American Literature
 Honors American Literature
 African American Literature
 Genre Studies
 Rhetoric
 Women in Literature
 World Literature
 AP English Language & Composition
 AP English Literature & Composition

SOCIAL SCIENCE & HISTORY

Ancient World History
 Modern World History
 US History
 AP US History
 Ethnic Studies
 Middle East History & Diplomacy
 US Government & Politics
 Theories of Social Change
 Theory of Knowledge
(not offered in 2022-23)

GENERAL ELECTIVES

AP Psychology
 Economics
 Film Studies
 Journalism & Media Studies
 Programming 1, 2
 Robotics

MATH

Introduction to Algebra
 Algebra 1, 1B
 Algebra 1 Advanced
 Data Science
 Geometry
 Honors Geometry
 Algebra 2/Trig
 Honors Algebra 2/Trig
 Precalculus
 Honors Precalculus
 Statistics
 Honors Statistics
 Essentials of Calculus
 AP Calculus AB
 AP Calculus BC
 Multi-Variable Calculus
(post-AP honors)

ARTS

Introduction to Visual Arts **
 AP Art History
 2D, 3D Design
 Graphic Design ** 1, 2
 Advanced Topics in Design
 AP 2D Art: Graphic Design
 Digital Photography
 Advanced Digital Photography
 AP 2D Art & Design: Photography
 Digital Filmmaking 1, 2
 Yearbook
 Digital Music Production
 AP Music Theory *** indicates additional honors section offered*

SCIENCE

Science 9 *
 Science 10 *
 AP Biology
 AP Chemistry
 Engineering Design
 Honors Physics
 AP Physics C
 Anatomy & Physiology
 Honors Environmental Science
 AP Environmental Science
 Marine Biology
 Conceptual Physics
(8th grade Science)
** Replaces Bio/Chem 1+2 with a phenomena-based inquiry and project-oriented curriculum that weaves together life, physical, earth, space, and computer science, rooted in design and engineering practices.*

Jazz Rock Ensemble **
 Classical Music Ensemble **
 Vocal Ensemble **
 Theater Arts **
 Advanced Theater Arts:
 Acting & Directing
 Dance * 1, 2, 3, 4

World Languages

Chinese 1, 2, 3, 4
 Chinese 2 Advanced
 Honors Chinese 3, 4, 5
 AP Chinese Language & Culture
 French 1, 1B, 2, 3, 4
 French 2 Advanced
 Honors French 3, 4
 AP French Language & Culture
 Spanish 1, 1B, 2, 3, 4
 Honors Spanish 3, 4, 5
 AP Spanish Language & Culture

SHTeam

Architectural Foundations
 Entrepreneurship & Venture Capital
 Forensics
 Hands-on Aerodynamics
 Industrial Design
 Modern Markets
 Nanotechnology
 The Politics of Business
 Product Design
 Social Entrepreneurship
 Sociology of Food
 Surf & Sk8: Design/Build



399 GRADUATES FROM **CLASSES 2019 - 2022**
135 COLLEGES & UNIVERSITIES | **34** STATES **6** COUNTRIES

NORTHEAST

Babson College
Bard College
Barnard College
Bentley University *
Berklee College of Music
Boston College *
Boston University *
Brown University *
Colgate University
College of Holy Cross
Columbia University *
Cornell University
Dartmouth College
Emerson College *
Fordham University *
Harvard College *
Mannes School of Music
Middlebury College
The New School *
New York University *
Northeastern University *
Pace University *
Parsons School of Design *
Sarah Lawrence College
Southern Connecticut State University
Springfield College
Syracuse University *
Tufts University *
University of Massachusetts Amherst
University of Rhode Island
Utica University
Vassar College
Wesleyan University
Worcester Polytechnic Institute *
Yale University *

MID-ATLANTIC

American University *
Bryn Mawr College
Carnegie Mellon University *
Drexel University *
Duquesne University
George Washington University *
Georgetown University
Johns Hopkins University *
University of Pennsylvania
Villanova University
Washington & Lee University

SOUTH/SOUTHEAST

Auburn University *
Belmont University
Duke University
Elon University
Emory University
Georgia Institute of Technology
Louisiana State University
Rice University
Savannah College of Art & Design
Southern Methodist University *
Texas Christian University *
Tulane University
University of Miami *
University of Mississippi
University of Texas, Austin
Wake Forest University

MID-WEST

Augustana College
Bradley University *
Carleton College
Indiana University, Bloomington *
Lake Forest College
Marquette University
Miami University of Ohio *
Northwestern University *
The University of Oklahoma
Purdue University *
St. Olaf College
The Ohio State University *
University of Chicago
University of Illinois, Urbana-Champaign*
University of Michigan *
University of Notre Dame
Washington University in St. Louis *

WEST / MOUNTAIN

Arizona Christian University
Arizona State University *
Brigham Young University, Idaho
Brigham Young University, Provo
Regis University
The University of Arizona *
University of Colorado, Boulder *
University of Denver *
University of Hawai'i at Mānoa
University of Utah *

CALIFORNIA

ArtCenter College of Design
California Institute of Technology *
Cal Poly San Luis Obispo *
CSU Long Beach
Chapman University *
Harvey Mudd College
Loyola Marymount University *
Mira Costa College *
Palomar College
Pepperdine University *
Pitzer College *
Pomona College *
San Diego State University *
San Jose State University
Santa Clara University *
Santa Monica College *
Scripps College *
Sonoma State University
St. Mary's College of California
Stanford University *
UC Berkeley *
UC Davis *
UC Irvine *
UC Los Angeles *
UC San Diego *
UC Santa Barbara *
UC Santa Cruz *
University of Redlands
University of San Diego *
University of San Francisco *
University of Southern California *
Westmont College

PACIFIC & NORTHWEST

Gonzaga University
Lewis and Clark College
Seattle University *
University of Oregon *
University of Washington *

INTERNATIONAL

The American University of Paris (FR)
New York University Shanghai (CH) *
Regent's University London (UK)
Sciences Po - Columbia University
Trinity University - Columbia University (IRE)
University of British Columbia, Okanagan*
University of British Columbia, Vancouver*
University of Toronto (CA)

* indicates more than one matriculation at that institution