

The 6th Grade Environmental Trip

Camp Huston 2015

You've heard stories, you've seen pictures, now it is your turn! This is your year to participate in the Camp Huston environmental field trip. The time and effort placed by the camp planning team is evident as the plans for the camp trip are well under way. Camp is a marvelous event for the students to experience. The two and a half days at Camp Lutherlyn will be a time the students will never forget. The memories will last a lifetime. Learning will be fun when students interact with peers outside the classroom with true hands-on environmental experiences. The Camp Lutherlyn trip will be from May 19-21, 2015. Teamwork will be

demonstrated as a group building course is completed. GPS units will be used to assist them as they travel through the woods. Stream study gives the opportunity to look for a variety of creatures living in the stream and classify each accordingly. There has to be time for cooking and eating as students create the ultimate mountain pie, trail mix, and s'more. These are just a few of the classes students will experience while at Camp Lutherlyn. Although spring seems distant, now is the time to prepare for camp.

Camp Huston

724-334-1443

X3156 or X3157

Points of Interest

- ☺ Fundraiser
- ☺ Parent Volunteers
- ☺ Camp Supplies
- ☺ Classes at Camp
- ☺ Required Forms

Camp Lutherlyn

Camp Lutherlyn is located in Prospect, PA seven miles west of Butler and approximately forty miles north of Pittsburgh. Camp Lutherlyn has 640 acres of land, two lakes, 17 miles of trails, and comfortable accommodations. Camp Lutherlyn serves delicious, "all you care to eat" meals in a state-of-the-art dining facility. Meals are tailored to the needs of the group, accommodating adults, children, vegetarians, and those with allergies.

Camp Lutherlyn
500 Lutherlyn Lane
Prospect, PA 16052
724-865-2161
www.lutherlyn.com

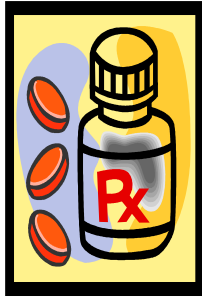


Inside this issue:

Medications	2
Parent Volunteers	2
Equipment	3
Discipline	3
Fundraiser	4
Classes	4

Medical Concerns

All medications, both prescriptions and over-the-counter medications, must be given to the school nurse approximately two weeks prior camp departure. Over-the-counter drugs include, but are not limited to such items as aspirin, TUMS, and cough drops. Students and parents are NOT permitted to keep these items in their cabins or on them at any time.



All medications need to be given to the school nurse at least **TWO WEEKS** prior to camp departure.

Please deliver any item that you think your child may need while at camp to the nurses office. The medication must be in the original container and in a ziplock bag with your child's name. Remember that prescriptions must have a written order from the doctor included with the medication.

When Will my Child Attend?

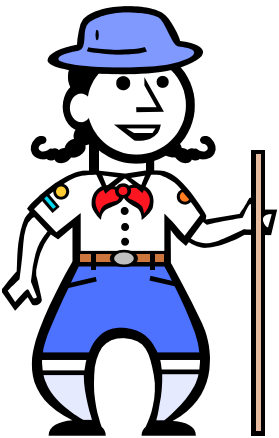
Each child will be attending the environmental trip at the same three-day session. The session will be Tuesday, May 19 through Thursday, May 21, 2015. Students who choose not to attend camp will have classes at HMS during the camp session.



The environmental trip is a wonderful experience allowing students to learn outside of the classroom.

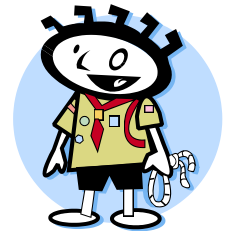
Parent Volunteers

The environmental trip is a real success due to the help and dedication of the Burrell faculty, administration, community, and most importantly, the parents. We are currently compiling a pool of parent volunteers this year for camp. Parents will be responsible for moving students as directed by their schedule, getting students to meals and activities on time, and chaperoning students while sleeping in their cabins. If you are interested, it is important to notify the camp planning team immediately using the attached form.



We will need of more volunteers than can be scheduled into the program. Parents are initially selected by a

lottery. The remaining parents will comprise the waiting list. It is important to remember that many parents on the waiting list are contacted to fill vacancies as circumstances change prior to camp week. If your child has a special medical concern that requires your attendance, please note that on your form. If you are the same sex as your child, you will be assigned to his/her cabin. If you are not the same sex, you will be assigned to a same sex cabin. **All parents must complete the criminal record check, child abuse, and FBI fingerprinting clearance forms that are required by all school employees and volunteers.** The cost of obtaining these clearances are the responsibility of the parent volunteer. If you are currently a district-approved volunteer, there is no need to repeat the clearance process. A meeting will be held prior to camp to provide more details on volunteer responsibilities.



Parent volunteers are an extremely important component to the success of the environmental trip experiences.

Essential Camp Supplies

It is important for students to be prepared with the necessary equipment for the camp trip. Here is a list of items that are essential for an enjoyable trip. By providing this list to you now, you will be able to gather, borrow, purchase, or use some of these items as gifts for your child. A more detailed list will be provided at the camp meeting in the spring.



These items make great holiday gifts!

- Sleeping Bag
- Pillow
- Sneakers and/or Hiking Boots
- Rain Parka/Windbreaker
- Backpack
- Empty Water Bottle
- Shower Shoes
- Sweatpants/Sweatshirts
- Camera (Optional)
- Warm Jacket
- Hairdryer (Optional)
- Flashlight/Batteries
- Sunglasses
- Hat
- Shorts/Jeans
- Pencil
- Towel/Washcloth/Shampoo
- Chapstick/Sunscreen
- Insect Repellent
- Zip-lock Bag—Soap, Toothpaste/Brush, Deodorant
- Duffle Bag/Luggage
- Extra Socks

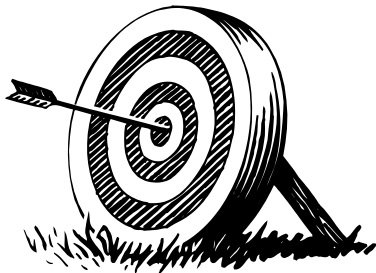
Discipline Guidelines

We wish for every student to attend and share this wonderful learning experience together. Attending camp is a privilege, not a right. Mr. Ferra, Mr. Pruitt, and the camp planning team have developed guidelines for student behavior for the remainder of the school year. Frequent discipline problems at HMS can prevent a student from attending camp.

Our HMS discipline guidelines also apply to our behavior while at Camp Lutherlyn. *While at camp, students will be held accountable for any damages caused to Camp Lutherlyn property.*

Student refunds cannot be made for any reason after payment has been sent to Camp Lutherlyn. Please discuss these guidelines with your child, sign the attached form and return to your child's homeroom teacher by

Thursday, October 9, 2014.



Make the mistakes of yesterday
your lessons for today.

Students will not attend camp if they are in violation of any of the following:

- *suspended from school more than one day or suspended at the time he/she is to attend camp.
- *have outstanding detentions for disciplinary reasons at the time he/she is to attend camp.
- *are failing sixth grade at the end of the third nine-week grading period.

Students **MAY** not be able to attend if they have received 5+ detentions for behavior during the school year.

2014-2015 Camp Fundraiser

Planning an activity of this magnitude is costly. The students will be responsible for a portion of the camp costs. **The cost per child is \$150.** We do understand that this is a large sum of money for a school event. A candy bar fundraiser will be conducted to allow students the opportunity to cover a portion or the entire cost of the trip. Students will use the money they earn to offset their personal camp cost. An individual account for each student will be opened. It is not mandatory for students to participate in the fundraiser, although it is highly recommended. Families may choose to provide the funds for the entire cost of the trip and not fundraise.

Details about the fundraiser will be coming soon. A child may sell enough to pay for the entire trip or a portion of the cost. If you are attending camp as a volunteer, your child may sell extra items to cover your cost of \$120.

Acceptable forms of payments are by dollar bills or checks made payable to "HMS Student Activity Fund." Please do not send coins.

A refund for any student who is unable to attend camp for any reason will be given prior to April 24, 2015. A refund will only be given for "out of pocket" money. Money earned through the fundraiser will not be refunded.

Make all checks payable to
"HMS Student Activity
Fund."



Classes Offered at Camp Lutherlyn

Impairment
Canoeing
Stream Studies
Rocketry
Ecosystems

The attached forms on the following pages must be returned to the guidance office by October 9th, 2014.

Geology Hike
Fishing
Campfire Cooking
Archery
Geocache

Camp Permission Slip and Fundraiser

Due October 9, 2014

The cost to attend Camp Lutherlyn is \$150. You may choose to participate in the fundraisers to help cover a portion or all of the costs. Students choosing to participate in the fundraiser will receive details soon.

CHILD'S NAME _____

CHILD'S HOMEROOM _____

Please check one of the following:

_____ My child **WILL** attend and participate in the fundraiser.

_____ My child **WILL** attend but **WILL NOT** participate in the fundraiser. (*You may either pay in full or installments of approximately \$30/month.*)

_____ My child **WILL NOT BE ATTENDING CAMP.**

T-shirt size --- ___S ___M ___L ___XL ___XXL (*All shirts are **adult** sizes*)

My child has permission to attend the environmental program at Camp Lutherlyn.

PARENT NAME _____

PARENT/GUARDIAN SIGNATURE _____

DISCIPLINE GUIDELINES

CHILD'S NAME _____ HR _____

I have read and understand the discipline guidelines for attending Camp Lutherlyn.

CHILD'S SIGNATURE _____

PARENT/GUARDIAN SIGNATURE _____ DATE _____

PARENT/GUARDIAN VOLUNTEER FORM

Please disregard this page and throw it away if you are NOT interested in going to Camp Lutherlyn as a volunteer or if you will not be available to attend Camp Lutherlyn during May 19-21, 2015.

If you are interested and are available to help at camp, this form is to be returned with the student permission and fundraiser form.

PARENT/GUARDIAN NAME _____

ADDRESS _____

PHONE _____

EMAIL _____

CHILD'S NAME _____

CHILD'S HOMEROOM _____

I have completed my clearances to attend camp. These forms must also be turned in to HMS Guidance as soon as you receive them so they can be approved by the Burrell School Board. Copies of these forms can be found on Edline.

PA Child Abuse Clearance

PA State Police Criminal Record Check

FBI Fingerprint Check

T-Shirt size --- S M L XL XXL

Cost for parent volunteer is **\$120**

**You will be assigned to be the chaperone of your child's group unless you are not the same gender as your child. If you are not the same gender, but still wish to volunteer as a chaperone, you will be placed with a group of the same gender. However, we cannot guarantee the amount of time you will be able to spend with your child as you will be with a different group.*