



# Concordia

INTERNATIONAL SCHOOL SHANGHAI

上海协和国际外籍人员子女学校

CONCORDIA  
INTERNATIONAL  
SCHOOL SHANGHAI  
IS LOOKING FOR

**DIRECTOR OF EARLY CHILDHOOD**

START: AUGUST 2023

---

it starts here





## Our Mission

At Concordia, we view every student as a gift from God, entrusted to us by parents and are committed in Christian stewardship to educate students holistically in a nurturing environment that includes comprehensive and challenging opportunities in academics, creative arts, spirituality, athletics, co-curricular activities, and service.



## Vision:

Concordia Shanghai will be a global platform fostering deeper learning and transforming lives to lead change in a dynamic and complex world.



## Our Core Values

We partner with students and parents in a learning community that facilitates holistic education with high expectations. By giving more than taking, being kind and loving, and practicing forgiveness and peace, our community enables servant leaders. Celebrating our spiritual lives together and valuing everyone as equal, we respect and care for all people, making the best decisions for the individual in the context of community.



## Schoolwide Learner Outcomes

We expect our students to become:





## Who We Are

Concordia is and has always been about community. Since Concordia's inception in 1998 with 22 students from 5 families to 2011 with more than 1200 students from almost 800 families, Concordia continues to attract those seeking rigorous academics, whole child philosophy and a welcoming environment. The small community feel creates an atmosphere of connection and concern for others where we watch out for one another, physically and emotionally, academically and socially. The Concordia experience powerfully impacts both students and families and our embracing community, proven academics and culture of familial partnership all lend themselves to our small community feel with world class results.

Concordia International School Shanghai has foundational and ongoing relationships with Hong Kong International School and Concordia International School Hanoi. These relationships provide opportunities for professional collaboration and fellowship between the schools—the only partners of this kind worldwide.

From Shanghai, the world is at our fingertips, yet at Concordia we have intentional focus on our host country, China. Across all grades, Concordia seeks to develop in students a deep interest in China through academic exploration, educational travel, language studies and service. We believe that the highly sensory cultural context of our location enriches each student's learning experience and daily life.

## Where We Are Located

Concordia is conveniently located in a modern neighborhood of Pudong called Jinqiao. Nicknamed the "Green City", its tree-lined streets are home to restaurants, cafes, and shopping areas. While biking is the primary mode of transportation in the area, the subway system is close by, giving easy access to the rest of the city of Shanghai.

Shanghai is a cosmopolitan city with a unique blend of Eastern and Western influences. Apart from the concert halls, sporting arenas and well-curated museums, large green spaces balance out the growth of the city, and a variety of cultural and social opportunities are on offer for families and singles.





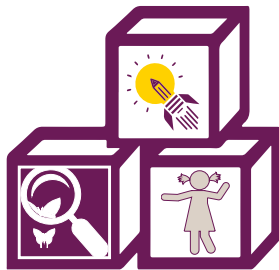
# Concordia by the Numbers

**14** Homeroom classrooms  
Outdoor learning spaces **2**  
Intentional Art and Music & Movement classrooms



**AGE-APPROPRIATE ACADEMICS**

**SELF-REGULATION  
EXECUTIVE FUNCTION  
SOCIAL-EMOTIONAL  
GROWTH**



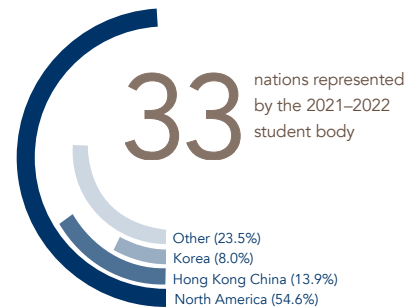
Supportive faculty and diverse offerings allow students to excel both in and out of the classroom.

Our culture of involvement and interaction between students, faculty and engaged parents creates a unique academic ecosystem where students thrive holistically.



## Student Demographics

## Faculty Demographics



**1:8**  
TEACHER : STUDENT



**15.4**  
AVERAGE TEACHER  
EXPERIENCE



## Academics at Concordia

EC Division supports a nurturing learning experience that honors the notion of the “whole child” in partnership with the family. A combination of teacher-directed and child-initiated activities ensure that engagement supports meaning-making, choice, and purposeful learning.

An emphasis on developmentally appropriate environments and situations allows our ES students to flourish as they build a solid foundation in the fundamental areas of literacy (Reading & Writing Workshop), mathematics, science and social studies and are exposed to various areas of fine arts and physical education.

The MS years expand upon academic areas explored in earlier years of education, and students are presented with increased expectations for independence, responsibility and leadership, all within a supportive and positive environment.

The HS focus is on providing life experience and a more tailored academic curriculum. Whether pursuing a special interest in science, mathematics, English or the arts, our students have opportunities to flourish. Advanced Placement (AP) classes are offered as a way to challenge our students to excel across disciplines. Students are the most important stakeholders. Their needs are the first filter we use.



MUSIC



PHYSICAL  
EDUCATION



VISUAL ARTS



SOCIAL  
STUDIES



MANDARIN

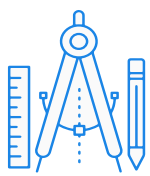


WORLD  
LANGUAGE

LANGUAGE ARTS



STEM



MATH



SCIENCE



TECHNOLOGY



ELECTIVES



SWIMMING



SERVICE  
LEARNING



ELL  
& LEARNING  
SUPPORT



## Position Overview

The Director of Early Childhood (EC) serves as the educational leader responsible for empowering and supporting the EC Division to carry out the school's vision and mission. S/he is responsible for managing the policies, facilities, regulations and procedures that ensure all EC students are learning, are supervised in a safe learning environment, and that a high-quality education that meets the approved curricula as framed by the Schoolwide Learner Outcomes (SLO) is provided.

The Director of Early Childhood works collaboratively with faculty, administrators, and parents to meet the academic, spiritual, mental, and social-emotional needs of early childhood school students, advance the school's core values; foster a sense of community throughout the school; monitor progress toward school-wide goals; and establish divisional goals for ongoing improvement which align with the school-wide goals.

To view the full job description click [HERE](#)

## How to Apply?

A complete application includes:

- **Cover letter**
- Up-to-date **resume**

