

Sustainability Week at Gordon School

October 24th - 28th



**GORDON
SCHOOL**

A week to raise community awareness and engagement in addressing the global climate crisis, concluding in a symposium for middle school students from Rhode Island public and independent schools.

Sustainability Week

What we're up to...



In classrooms

Throughout the week, Gordon students across all three divisions will participate in lessons and activities about sustainability across all subject areas. On Wednesday, Peter Milne, founder of the Beyond COP21 Symposium, will lead Lower School and Middle School talks related to the UN Sustainable Development Goals.

In the Commons

Gordon parents and caregivers are invited to participate in a series of conversations in the Commons designed to support families in developing more sustainable energy and transportation practices.

Monday, October 24th: Solar panels

Wednesday October 26th: Electric and hybrid cars

Friday, October 27th: Biking your commute

all conversations start at 8:15am



In the community

On Wednesday, October 26th at 6:30pm, Peter Milne will give a talk entitled *Sustainability Education: Giving Children a Voice in Their Future*. This talk is free and open to the public. Please spread the word and join us in the Wales Theater for this very special community event.



Middle School Symposium

Thursday, October 27th



MORNING

Wales Theater



8:30AM

Arrival and check-in



9:00AM

Welcome

Louisa Flynn and Ida Marcus, Student Co-Presidents, Gordon School
Dr. Noni Thomas López, Head of School, Gordon School
Senator Jack Reed
Senator Sheldon Whitehouse
Congressman David Cicilline
Video greeting from Bill McKibben, founder of 350.org



9:30AM

Understanding local and global environmental Issues

Peter Milne, founder of the Beyond COP21 Symposium, presents the first session about the state of the planet, the impact of climate change and the purpose of the United Nations' Sustainable Development Goals



10:30AM

Break and pledge writing

During break, students can enjoy a snack and have the opportunity to complete their personal commitments to effecting positive change



10:45AM

Sharing a voice

Through mind-mapping, students will work together in small groups to reflect on the UN Sustainable Development Goals, focusing specifically on Goal #12: Responsible Consumption and Production

Middle School Symposium

Thursday, October 27th



KEYNOTES

Wales Theater

11:30AM

Groundwork Rhode Island



Groundwork Rhode Island is a non-profit, community-based organization that helps make Rhode Island's urban communities healthier and more resilient places to live by improving the physical environment and creating economic opportunities for local residents through job training, employment and social venture programs.



11th Hour Racing

11th Hour Racing establishes strategic partnerships within the sailing, maritime, and coastal communities to promote collaborative, systemic change benefitting the health of our ocean – one degree at a time.



Vatic Kuumba

Vatic Kuumba is an activist artist who began creating worlds using language. Vatic believes that rap is a gateway art form. Working with the youth of Providence has helped Vatic Kuumba hone his edge to engage with populations least consulted when creating theater.

LUNCH

Nelson Dining Hall

12:30PM

Vegan lunch sponsored by Plant City

PLANT CITY
PROVIDENCE

Salad
Chick'n fingers
Mac and "cheese"
Chocolate chip cookie

Middle School Symposium

Thursday, October 27th



WORKSHOPS

Various locations

1:15PM

Thirty-minute workshop rotations



WORKSHOP 1: NELSON FIELD HOUSE

Exhibition hall

Students will visit exhibit tables to learn about how local organizations are working to achieve the UN Sustainable Development Goals

WORKSHOP 2: NELSON DINING HALL

Eli Nixon



Eli Nixon is a settler-descended transqueer clown, a cardboard constructionist, and a maker of plays, puppets, parades, pageants, suitcase theaters, illustrations, installations and low-tech public spectaculah. Eli collaborates with artists, activists, libraries, schools, and the more-than-human world to expand imaginative capacity and build muscles for collective liberation. They are proposing a new holiday in homage to horseshoe crabs, everybody's invited!

WORKSHOP 3: WALES THEATER

Whale Guitar Project



The Whale Guitar Project is a work of art and an instrument of change that has been played and signed by hundreds of guitarists on an epic journey to amplify voices for climate justice and ocean health.

WORKSHOP 4: OUTDOOR CLASSROOM

Woonasquatucket River Greenway



The Woonasquatucket River Greenway Project, was initiated in 1993 by Fred Lippett of the Gordon class of 1930. Fred and others realized that the Olneyville neighborhood had a hidden and untapped asset, the Woonasquatucket River, and were determined to restore it, and the adjacent, abandoned industrial lands, as a catalyst for positive change.

Middle School Symposium

Thursday, October 27th



CLOSING

Wales Theater

Thank
you!

3:30PM

Break and return to Wales Theater

3:40PM

Reflections and closing

One student from each school will share a short reflection from the day
A thank you from Gordon sixth graders
Closing from Peter Milne

4:00PM

Dismissal



What is Plastic Free Lunch Day?

A day when school lunch is prepared without plastic!

An action day to reduce as much plastic as possible.

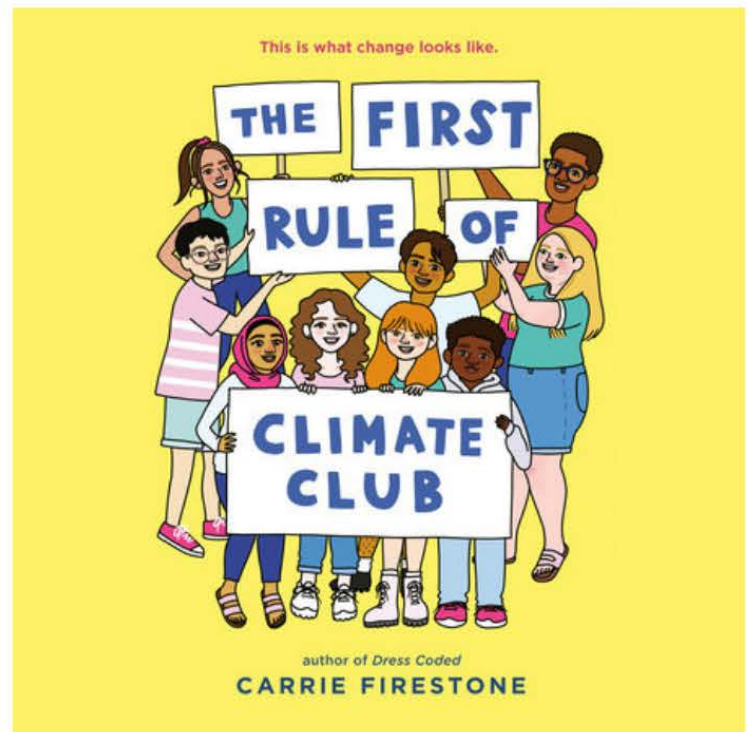
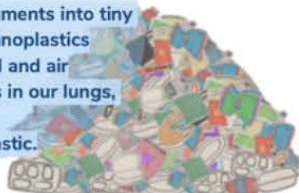
A way to protect the environment and student health.

Provide a glimpse of a plastic-free school cafeteria future.

Connect with students everywhere,
who are taking climate action in their cafeteria.

Why Plastic Free Lunch Day?

- School cafeterias serve over 7 billion meals per year
- School meals are loaded with single-use plastics
- Less than 9% of plastic is recycled
- Most plastic ends up in a landfill or the environment
- Plastic does not biodegrade; it fragments into tiny pieces called microplastics, then nanoplastics
- Microplastics are in our oceans, soil and air
- Scientists have found microplastics in our lungs, liver, digestive tract, and blood.
- We are all eating and breathing plastic.



Gordon School thanks author Carrie Firestone for providing all attending schools a copy of her book *The First Rule of Climate Club* for their school libraries!

Sustainability Exhibition in Nelson Field House



The Exhibition Hall will be open on Thursday from 11:00am to 1:00pm to Gordon community members (current and former parents and caregivers, non-Gordon siblings, alumni and grandfriends) and Gordon students not participating in the Symposium. We hope to see you there!

Gordon welcomes the following exhibitors to the Symposium:

15-MINUTE FIELD TRIPS

15 Minute Field Trips offers hands-on education programs at the intersection of art, community action, and the natural world. They believe art is an especially effective motivator of environmental advocacy.

BOOTSTRAP COMPOSTING

Bootstrap Compost is a residential and commercial food scrap pickup service operating in Greater Boston, Providence, Worcester, and the Berkshires.

BE THE SOLUTION TO POLLUTION

Be the Solution's purpose is to clean South Coast shorelines while educating the public about plastic in the ocean. They offer alternatives to single use plastic and speak at schools, events, and have presented documentaries about plastic pollution.

THE DREDGING PROJECT

A mobile, interactive artwork that incorporates litter collected during dredging of the Providence rivers, designed to demonstrate the impact of water pollution on our environment.

FARM FRESH RHODE ISLAND

Farm Fresh RI's mission is to grow a local food system that values the environment, health, and quality of life of the farmers and eaters in our region.

THE FARM SCHOOL

The Farm School is an organization of multiple interweaving programs spread out over almost four hundred acres of land in rural Massachusetts, linked together under common purpose and stewardship.

GROUNDWORK RHODE ISLAND

Groundwork Rhode Island is a non-profit, community-based organization that helps make Rhode Island's urban communities healthier and more resilient places to live by improving the physical environment and creating economic opportunities for local residents.

GROWING FUTURES RHODE ISLAND

Growing Futures RI's vision is to cultivate, train and educate the next generation of natural resource professionals who will be charged with stewarding, protecting, and responding to a changing environment and feeding our community.

Sustainability Exhibition in Nelson Field House



HOPE'S HARVEST

Hope's Harvest mobilizes volunteers to harvest surplus fruits and vegetables from farms, contracts with local growers, and pays for surplus produce — all for distribution to hunger relief agencies throughout Rhode Island.

NEW BEDFORD WHALING MUSEUM

The New Bedford Whaling Museum ignites learning through explorations of art, history, science and culture, rooted in the stories of people, the region and an international seaport.

PLANT CITY

Our lunch sponsor Plant City is the world's first plant-based vegan food hall and marketplace. Plant City is completely animal-free, 100% compostable and powered by wind. The owners believe eating plant-based is not just critical for the climate, but also for environmental and social justice.

RHODE ISLAND DEPARTMENT OF HEALTH

RIDOH's mission is to prevent disease and protect and promote the health and safety of the people of Rhode Island.

RHODE ISLAND FARM TO SCHOOL NETWORK

A statewide network providing leadership, coordination, and advocacy to advance farm to school efforts in Rhode Island cafeterias, classrooms, and communities.

RHODE ISLAND RESOURCE RECOVERY

The mission of the Resource Recovery is to provide safe, environmentally compliant, clean and affordable solid waste and recycling services for the Rhode Island community.

WHALE GUITAR PROJECT

The Whale Guitar Project is a work of art and an instrument of change that has been played and signed by hundreds of guitarists on an epic journey to amplify voices for climate justice and ocean health.

WOONASQUATUCKET RIVER WATERSHED COUNCIL

The WRWC is a successful model of community revitalization that helps people discover the Woonasquatucket River, and its natural resources, channeling life and economic development into neighborhoods.

WOONASQUATUCKET RIVER GREENWAY

The Greenway is a catalyst for renewal along the Woonasquatucket River in Providence, Johnston and North Smithfield. The Woonasquatucket River Greenway is Rhode Island's only funky, urban bike path, linking parks and green spaces for the enjoyment of neighborhood residents and people from across our watershed towns.