



**KITCHEN EQUIPMENT AT VARIOUS SITES, PHASE II**

10/25/2022

**Addendum # 3**

This addendum is hereby a part of those documents and contracts, the same as if bound therein and it shall supersede anything contained in the original bid manual with which it might conflict.

- Please see attached documents.

The end

10/18/2022

Chris Hudgins  
Tulsa Public Schools  
3027 South New Haven Avenue  
Tulsa, Oklahoma 74114

Re: Memorial High School

Dear Chris,

The following are items for Addendum #1.

**The following are clarifications to the items specified:**

**ITEM NO. 26 - STAINLESS STEEL WINDOW SILL (1 REQUIRED)**

Custom fabricated stainless steel window sill to be constructed per the drawings from fully welded 16 gauge type 304 stainless steel. The stainless steel sill to extend the full width and the full depth of the window sill. Turn the front edge down 2" with a raw edge. Attach the sill with industrial adhesive. Seal the sill with silicone caulking.

**The following are changes to the drawings:**

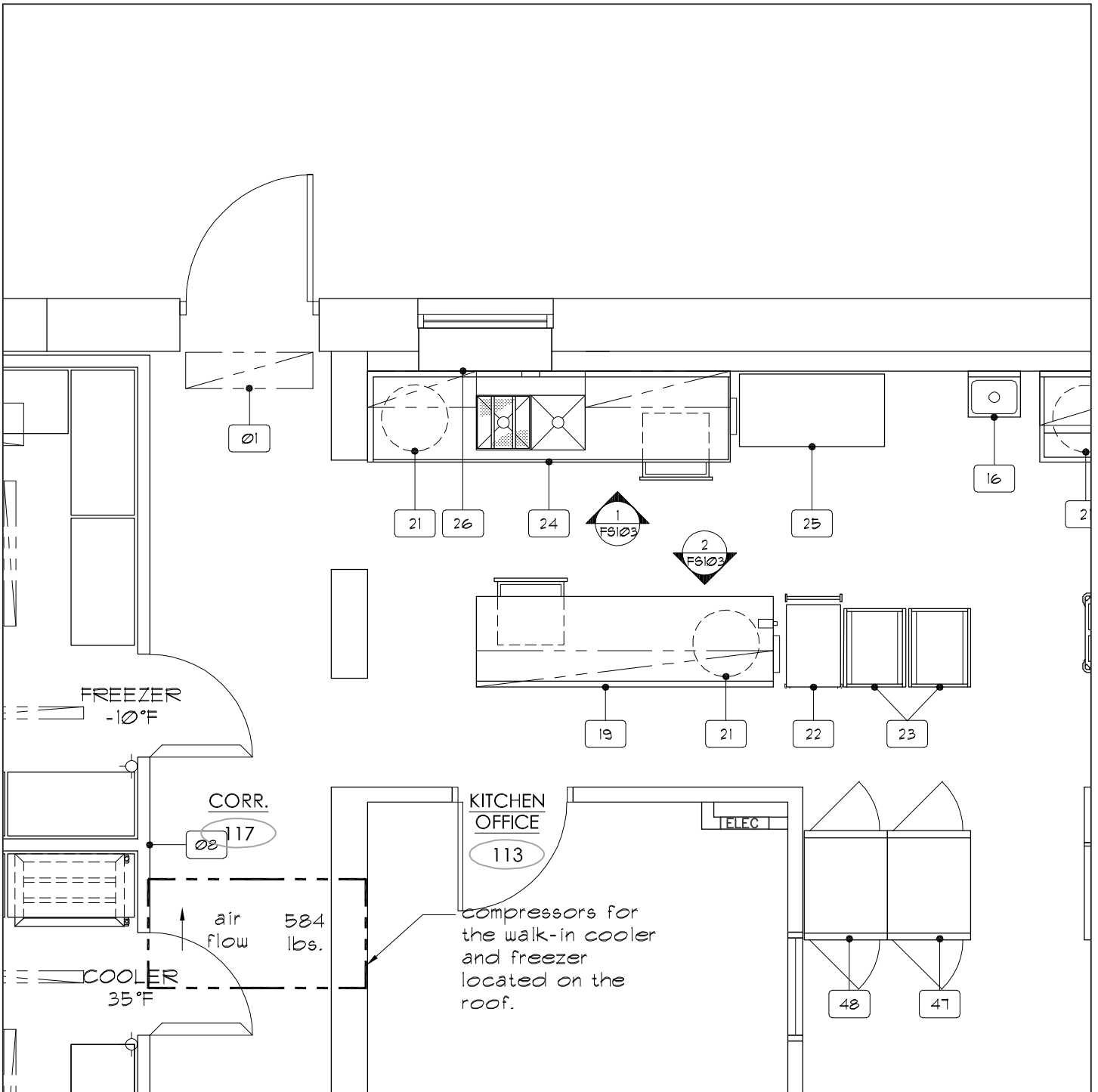
Drawing Addendum Number 3 - FS1.1.3. Added Item 26 to the plan.

**The following items are acceptable as substitutions to the items specified:**

There none submitted or approved. The bid will be as specified.

Sincerely,

Rocky Sturm, CFSP



# 1 FOODSERVICE EQUIPMENT ARRANGEMENT PLAN

1/4" = 1'-0"

**MEMORIAL HIGH SCHOOL**

5840 S. HUDSON AVE., TULSA, OKLAHOMA

PROJECT NUMBER 2020.11

SHEET NUMBER FS1.1.3

**ADDENDUM NUMBER 3**

DATE: 10/21/2022

**STURM CONSULTING, INC.**  
FOODSERVICE DESIGN & PLANNING

5838 SOUTH HUDSON PLACE  
TULSA, OKLAHOMA 74135  
PHONE (918) 260-0887  
FAX (918) 489-3933  
rockysturm@cox.net

