



EARLY COLLEGE ACCESS

RICHARD LOHMAN
Assistant Superintendent

EDUCATIONAL SERVICES 10/12/22



Closing Opportunity Gap Through Higher Education

The U.S. Bureau of Labor Statistics (BLS) notes that workers with a postsecondary degree typically earn more than those with only a high school education.

The median yearly earnings—or the middle amount in a set of data—for people with a high school diploma compared to a college degree is stark:

Associate's Degree	\$8,000
Bachelor's Degree	\$27,000
Master's Degree	\$40,000



One Way to Address the
Opportunity Gap is . . .

***Early College
Access through
Dual Enrollment***



Dual Enrollment

- Nuts, Bolts
“Where We Are?”

CA Community Colleges Enrollment for Minors

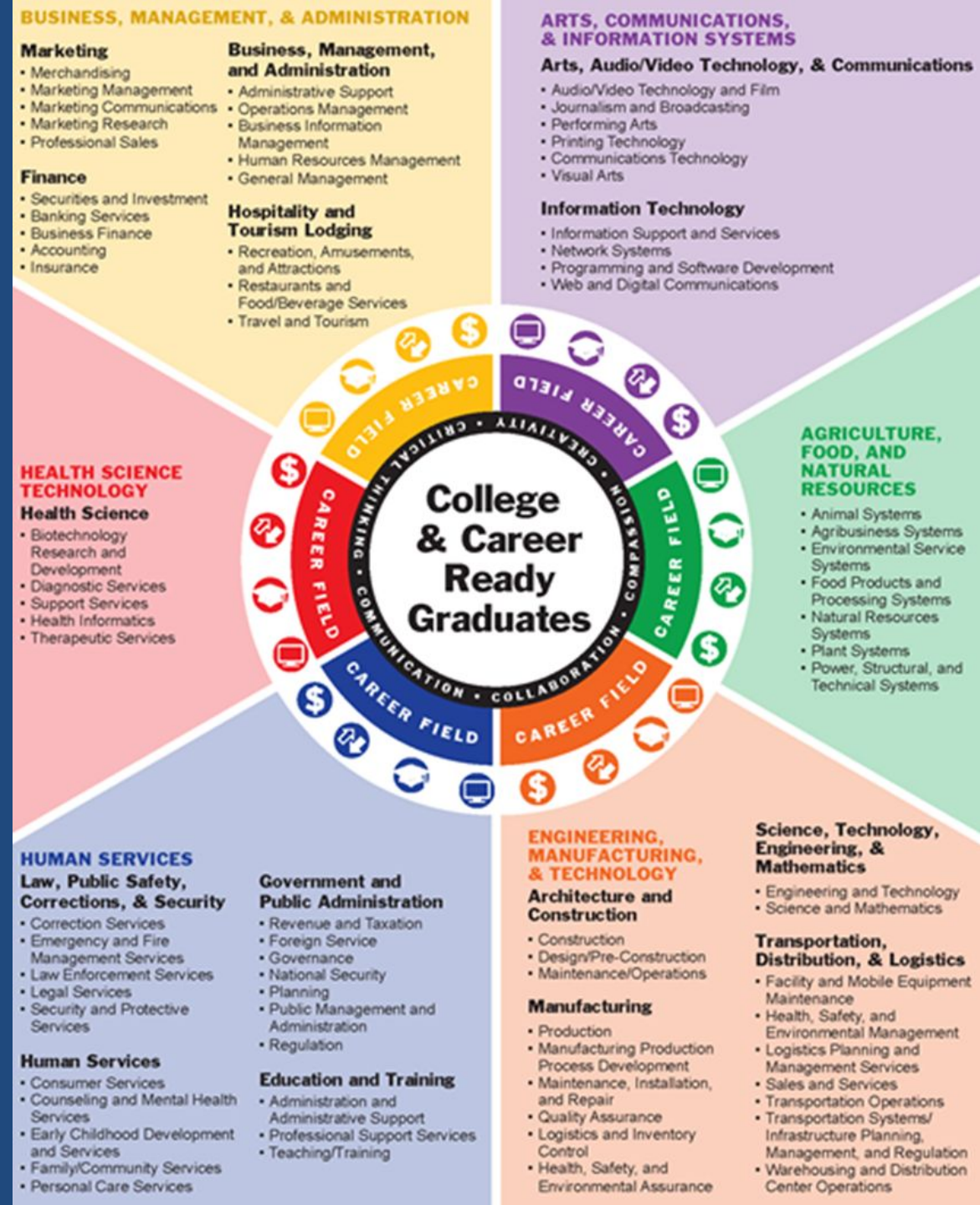
Dual Enrollment:

- Students enrolled at a school in partnership with a local community college.
- Course offerings are at the school site, and in support of specific goals. Fees are waived.
- All students must apply, secure authorization from parents and school (in partnership) and enrollment is completed via our partnership.

Dual Enrollment

Dual Enrollment: Pathways to College and Careers and helping students achieve college and career readiness

- Strengthen the talent pipeline to employment
- Support students to stay on track, maintain momentum and complete a college degree
- Best if there is a strong partnership between high school and college



Opportunities & Benefits for Students

- Complete high school and college credits concurrently
- Smoother transition to college life
- More time for career and/or college major exploration
- Address skills gaps and improve study skills/academic knowledge
- Increased confidence and motivation to persist
- Students learn the benefits of a college education

Educational Partnership Programs

Dual Enrollment



PASADENA
CITY COLLEGE

Quick view: Current MOU

- **No Student Fees**
- **Student Access**
- **Course Materials**
- **Course Selection**
 - Career Technical Education(CTE), transferable, or college and career readiness
 - PCC and TCUSD will ensure that no PCC faculty or high school faculty are displaced as a result of this agreement

NEXT STEPS

- Update our MOU with PCC
- Meet with High School Principals and Counselors to determine student needs
- Based on student need, work with PCC to determine what classes we can offer



EARLY COLLEGE ACCESS

RICHARD LOHMAN

