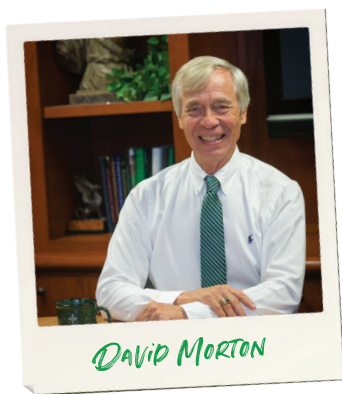




**YEARS OF
EXCELLENCE
IN EDUCATION**



From a single wing, 18 room school building constructed in 1949-50, Central Catholic High School/Bishop McGuinness Catholic High School has evolved. Now a 42 classroom building sits in the shadow of what was the first school. The modern 21st century school stands ready to meet the needs of a multi-talented, diverse student body.

Two-hundred seventy-five students were greeted on Central Catholic High's first day of school in September of 1950. A centerpiece in Bishop Eugene J. McGuinness' vision of growing our Catholic faith across the state, the school, which would later bear his name, was one of many new Catholic facilities constructed during his nine years serving as Bishop of Oklahoma.

By the year 2000, while other Catholic High Schools across the country were closing, Bishop McGuinness Catholic High School's population was growing, serving nearly 700 students. Education was changing, and it became necessary to address the needs of an aging building. The Building Faith Capital Campaign was launched in 2003 with a goal of raising \$10.5 million to rebuild the school. Building Faith II began with a \$5 million goal to expand and renovate the aging gymnasium. Finally, in 2010 Building Faith III was launched. The project provided five additional classrooms, a lecture hall and office space for maintenance and the school's athletic director.

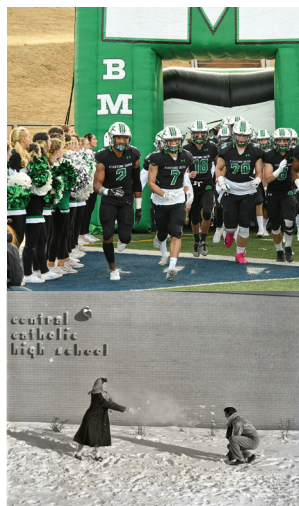
In 2016, construction began on the All Girls Sports Complex. Designed to provide practice space for the school's competitive cheer and pom programs, the facility

would also provide much needed locker room space for girls soccer, cross country, and track.

As the school approaches its 75th Anniversary, classroom space, once again, has become a critical need. As the population of our city and Catholic community have grown, so has the enrollment of the school. A record number of 740 students were welcomed to our campus this fall. One temporary trailer classroom building was added in 2021 to provide classroom space for our growing numbers.

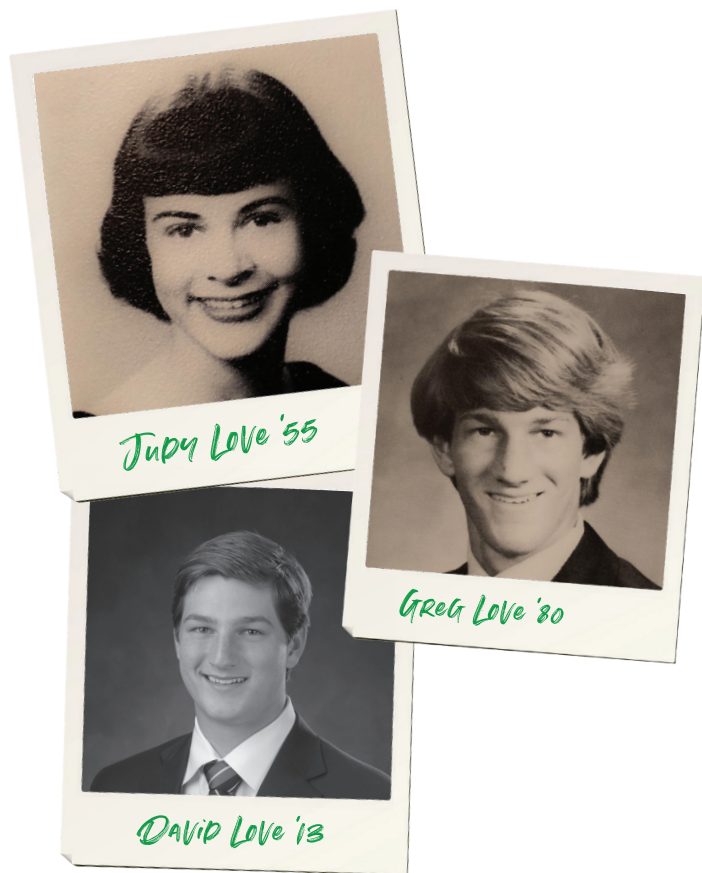
As we look to the next 75 years, our school must continue to evolve with the times. Projects to meet the needs of the students and their teachers are inevitable and will not be possible without the support of the Archdiocese and our Catholic community. The baton is now passed to us in order to address these growing needs. Help us continue our climb "Toward the Top."

David Morton
Principal and President



MISSION STATEMENT

As a Catholic community of faith, Bishop McGuinness Catholic High School is dedicated to educating and developing the whole person, providing a moral, ethical and Christ-centered compass for life. The teachings of the church permeate the school's spiritual, academic and social life, forming "a person for others."



CAMPAIGN CO-CHAIRMEN THREE GENERATIONS

Three generations of Love Family graduates are working together toward the celebration of the 75th Anniversary of Bishop McGuinness Catholic High School in 2025. As we approach the 75th anniversary of the school, we recognize the critical need to expand to provide more space for the ever-growing student body. We are excited to be a part of this project. Please join us in this climb to take Bishop McGuinness into the future.

THE FUTURE OF BISHOP MCGUINNESS



THE RUFFIN FAMILY CENTER

Vestina and Joseph Ruffin raised six children who all attended Bishop McGuinness: the late Joe '73 (graduated from Classen High School), Carlos '76 and Mark '80; as well as Mykl '74, Rick '77 and Lisa '82. Rick and Lisa have raised their families in Oklahoma City and Mykl and his family live in Chicago.

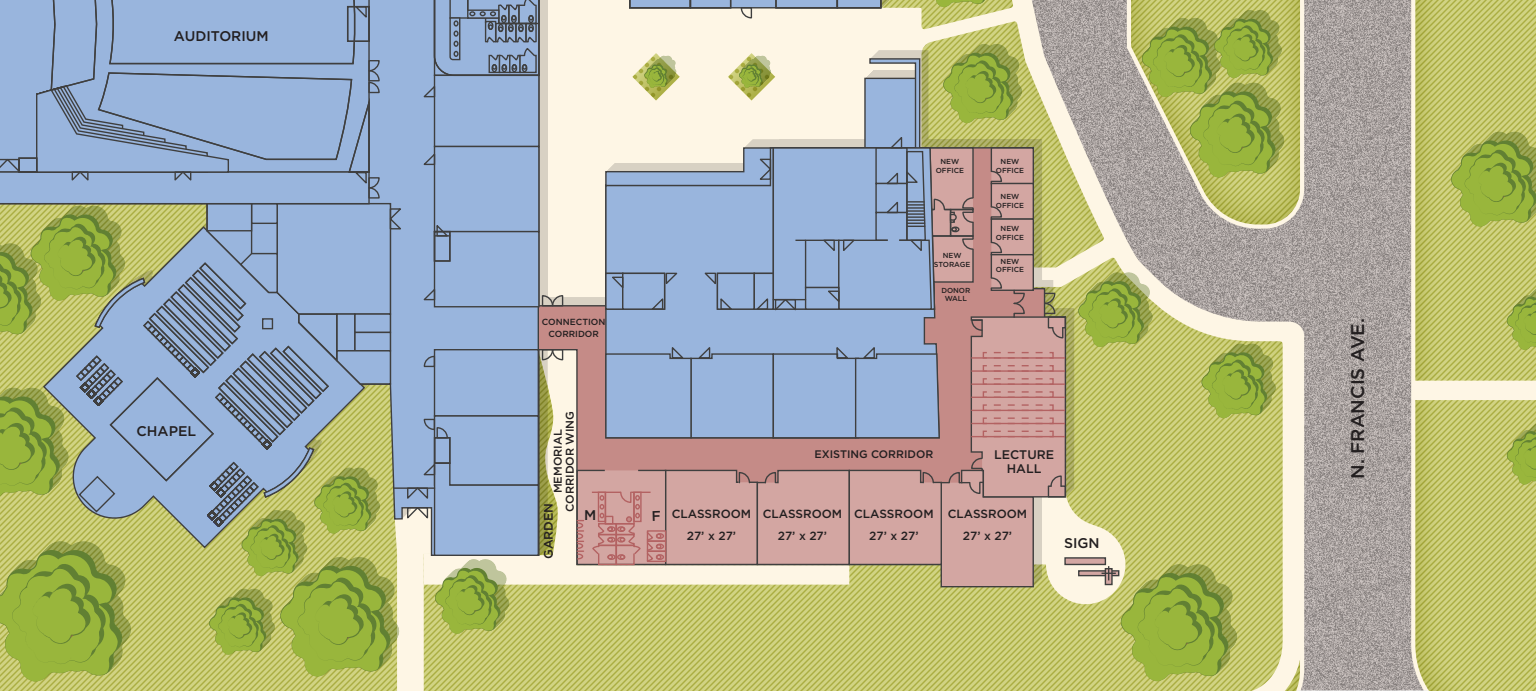


high school days, and the family grandchildren have been present in the halls of Bishop McGuinness since 1999, spanning every year to the present.

As they watch their families continue the Irish tradition, they embrace a favorite quote from Mark Ruffin: "Reach Your Full Potential!" The Ruffin family encourages the BMCHS community to live out this quote and to be a person for others.



The entire Ruffin family is grateful for their parents' sacrifice to provide them with a Catholic education, as well as their dedication to upholding Catholic values. Each one enjoys memories and lifelong friends from their



NAMING OPPORTUNITIES

Major gifts to the 75th Anniversary Campaign can be honored through the naming of prominent and important spaces on our campus.

\$500,000

Reach the Summit

Naming of the Theology Wing

\$25,000

Reach Your Full Potential

Name a bench in the Garden

\$350,000

The Higher We Go

Naming of the Memorial Corridor Wing

\$10,000

Onward, McGuinness

Plaque in Connection Corridor for all donors \$10,000 and above

\$250,000

Continue the Climb

Naming of the Garden

\$5,000

On Belay

Signage in east side flower beds

\$100,000

Toward the Top

Naming of the Lecture Hall*

**This Lecture Hall will be 2 classrooms combined to form a lecture hall.*

\$1,000

Moving On Up

Name a brick in the new connection corridor

\$50,000

Elevating Education

Name a Classroom

\$500

Excellence in Education

Name on plaque in existing corridor

PROJECT SCHEDULE

PROJECT LAUNCH: AUGUST 2022

FUNDRAISING

Begins Fall of 2022

PROJECTED CONSTRUCTION

Summer/Fall 2023

PLANNING MY THREE-YEAR PLEDGE

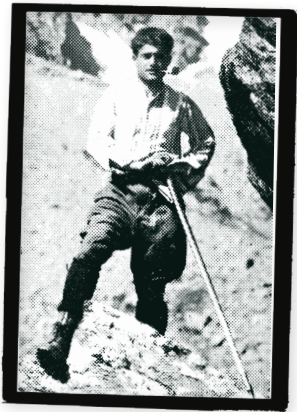
TOTAL PLEDGE	ANNUAL AMOUNT	MONTHLY	WEEKLY
\$50,000	\$16,666	\$1,388	\$347
\$25,000	\$8,333	\$694	\$173
\$10,000	\$3,333	\$277	\$69
\$7,500	\$2,500	\$208	\$52
\$5,000	\$1,666	\$138	\$34
\$2,500	\$833	\$69	\$17
\$1,000	\$333	\$27	\$7



ON BELAY

We are constantly climbing as a community, to reach new heights always in our walk with God. Before grabbing a single rock, climbers will ask their partner holding the rope, “on belay?” as a way of saying, “I’m about to climb and I need to make sure you’re there to support me.” As we near our 75th Anniversary, we have no intention of slowing our climbing pace, but we need to make sure you — as a critical member of this community — are here to support us as we continue heading toward the top. **On belay?**

We are always elated at the overflow of support Bishop McGuinness is shown. Contributing to our campaigns in any capacity, big or small, directly makes an impact on our community, our facilities and most importantly our students. Thank you for helping us climb towards the top.



**“THE HIGHER WE GO, THE
MORE WE CAN HEAR THE
VOICE OF CHRIST.”**

BLESSED PIER GIORGIO



**“IF YOU HAVE GOD AT THE
CENTER OF ALL YOUR ACTIONS,
YOU WILL ACHIEVE THE GOAL.”**

BLESSED PIER GIORGIO

CAMPAIGN CO-CHAIRMEN

Judy Love '55

Greg Love '80

David Love '13

CAMPAIGN CONTACTS

David Morton, President and Principal

Mary Joyce, Director of Advancement

Janie Kinsinger, Assistant Director of Advancement

Janet Ciupak, Chief Financial Officer

Bishop McGuinness **75**

HOW CAN I JOIN THE CLIMB?



For more information or to donate online,
please visit www.BMCHS.org
405-758-4912 | advancement@bmchs.org

Scan the QR code to watch our anniversary video

Gifts are 100% tax-deductible