



KITCHEN EQUIPMENT AT VARIOUS SITES, PHASE II

10/19/2022

Addendum # 1

This addendum is hereby a part of those documents and contracts, the same as if bound therein and it shall supersede anything contained in the original bid manual with which it might conflict.

- Please see attached files.

The end

10/18/2022

Chris Hudgins
Tulsa Public Schools
3027 South New Haven Avenue
Tulsa, Oklahoma 74114

Re: Elliot Elementary School

Dear Chris,

The following are items for Addendum #1.

The following are clarifications to the items specified:

ITEM NO. 07 - STORAGE SHELVING (1 LOT REQUIRED)

Eagle Group model Quad TRUSS storage shelves. Locate the bottom shelf at 10" above the finish floor and the remaining four (4) shelves at 17" O.C. at the balance of the shelving.

Accessories

- 2 ea. Model 1842C shelves. Locate at the top and the bottom of the units.
- 3 ea. Model QA1842C shelves.
- 2 ea. Model 1848C shelves. Locate at the top and the bottom of the units.
- 3 ea. Model QA1848C shelves.
- 2 ea. Model 2142C shelves. Locate at the top and the bottom of the units.
- 3 ea. Model QA2142C shelves.
- 8 ea. Model 2148C shelves. Locate at the top and the bottom of the units.
- 12 ea. Model QA2148C shelves.
- 4 ea. Model 2154C shelves. Locate at the top and the bottom of the units.
- 6 ea. Model QA2154C shelves.
- 36 ea. Model 86P posts.

ITEM NO. 13 - MOBILE DUNNAGE RACKS (1 LOT)

New Age dunnage racks with all the standard features.

Accessories

- 2 ea. Model 1204.
- 2 ea. Model 1205.
- 4 sets. Provide with all swivel polyurethane tired casters with brakes.
- 4 ea. Model 1174 handles. Shorten the handle to 42" above the finished floor installed height.

The following are changes to the drawings:

There are no revisions at this time.

The following items are acceptable as substitutions to the items specified:

There none submitted or approved. The bid will be as specified.

Sincerely,

Rocky Sturm, CFSP

10/18/2022

Chris Hudgins
Tulsa Public Schools
3027 South New Haven Avenue
Tulsa, Oklahoma 74114

Re: Elliot Elementary School

Dear Chris,

The following are items for Addendum #1.

The following are clarifications to the items specified:

ITEM NO. 03 - STORAGE SHELVING (1 LOT REQUIRED)

Eagle Group model Quad TRUSS storage shelves. Locate the bottom shelf at 10" above the finish floor and the remaining four (4) shelves at 17" O.C. at the balance of the shelving. Provide units of three (3) shelves with 86" high posts and footplates at the dunnage racks. Mount the bottom shelf at 44" above the finish floor. Mount the remaining shelves at 17" on center.

Accessories

- 6 ea. Model 2136C shelves. Locate at the top and the bottom of the units.
- 9 ea. Model QA2136C shelves.
- 6 ea. Model 2148C shelves. Locate at the top and the bottom of the units.
- 9 ea. Model QA2148C shelves.
- 3 ea. Model 2160C shelves. Locate at the top and the bottom of the units.
- 32 ea. Model 86P posts.
- 8 ea. Model FOOT-PLATE-S foot plates. Mount the foot plates to the floor with stainless steel fasteners. Locate the foot plates on the units at the dunnage racks.

ITEM NO. 06 - WALK-IN SHELVING (1 LOT REQUIRED)

Eagle Group QuadPLUS walk-in shelves. Provide units of four (4) shelves with 74" high posts at the evaporators and units of five (5) shelves with 86" high posts at the balance of the walk-ins. Mount the bottom shelf at 10" above the finish floor. Mount the remaining shelves at 17" on center. Provide units of three (3) shelves with 86" high posts and footplates at the dunnage racks. Mount the bottom shelf at 44" above the finish floor. Mount the remaining shelves at 17" on center.

Accessories

- 10 ea. Model QPF-2136E-GL shelves. Locate at the top and the bottom of the units.
- 21 ea. Model QPF-QA2136E-GL shelves.
- 8 ea. Model QPF-2142E-GL shelves. Locate at the top and the bottom of the units.
- 8 ea. Model QPF-QA2142E-GL shelves.
- 6 ea. Model QPF-2148E-GL shelves. Locate at the top and the bottom of the units.
- 9 ea. Model QPF-QA2148E-GL shelves.
- 12 ea. Model QPF-2154E-GL shelves. Locate at the top and the bottom of the units.
- 16 ea. Model P74-E posts.

- 52 ea. Model P86-E posts.
- 16 ea. Model FOOT-PLATE-S foot plates. Mount the foot plates to the floor with stainless steel fasteners. Locate the foot plates on the units at the dunnage racks.

ITEM NO. 31 - MOBILE PROOF/HOT CABINET (2 REQUIRED)

CresCor model 121-PH-UA-11D with all the standard features.

Accessories

- 2 ea. 120 volts, single phase.
- 2 ea. Model 1405-135 perimeter bumper
- 2 sets Provide with 5" polyurethane casters with brakes on all the casters.

The following are changes to the drawings:

There are no revisions at this time.

The following items are acceptable as substitutions to the items specified:

There none submitted or approved. The bid will be as specified.

Sincerely,

Rocky Sturm, CFSP

10/18/2022

Chris Hudgins
Tulsa Public Schools
3027 South New Haven Avenue
Tulsa, Oklahoma 74114

Re: Hale High School

Dear Chris,

The following are items for Addendum #1.

The following are clarifications to the items specified:

ITEM NO. 03 - STORAGE SHELVING (1 LOT REQUIRED)

Eagle Group model Quad TRUSS storage shelves. Locate the bottom shelf at 10" above the finish floor and the remaining four (4) shelves at 17" O.C. at the balance of the shelving. Provide units of three (3) shelves with 86" high posts and footplates at the dunnage racks. Mount the bottom shelf at 44" above the finish floor. Mount the remaining shelves at 17" on center.

Accessories

- 6 ea. Model 2136C shelves. Locate at the top and the bottom of the units.
- 9 ea. Model QA2136C shelves.
- 2 ea. Model 2142C shelves. Locate at the top and the bottom of the units.
- 3 ea. Model QA2142C shelves.
- 6 ea. Model 2148C shelves. Locate at the top and the bottom of the units.
- 8 ea. Model 2154C shelves. Locate at the top and the bottom of the units.
- 11 ea. Model QA2154C shelves.
- 7 ea. Model 2160C shelves. Locate at the top and the bottom of the units.
- 6 ea. Model QA2160C shelves.
- 4 ea. Model 74P posts.
- 48 ea. Model 86P posts.
- 12 ea. Model FOOT-PLATE-S foot plates. Mount the foot plates to the floor with stainless steel fasteners. Locate the foot plates on the units at the dunnage racks.

ITEM NO. 04 - MOBILE DUNNAGE RACKS (1 LOT)

New Age dunnage racks with all the standard features.

Accessories

- 1 ea. Model 1204.
- 1 ea. Model 1205.
- 1 ea. Model 1206.
- 3 sets. Provide with all swivel polyurethane tired casters with brakes.
- 3 ea. Model 1174 handles. Shorten the handle to 42" above the finished floor installed height.

ITEM NO. 10 - STAINLESS STEEL TRIM (1 REQUIRED)

Custom fabricated 14 Gauge fully welded stainless steel trim around the opening in the building and the walk-in box pre drawings and details. Notch the trim around the door frame in a tight manner.

The following are changes to the drawings:

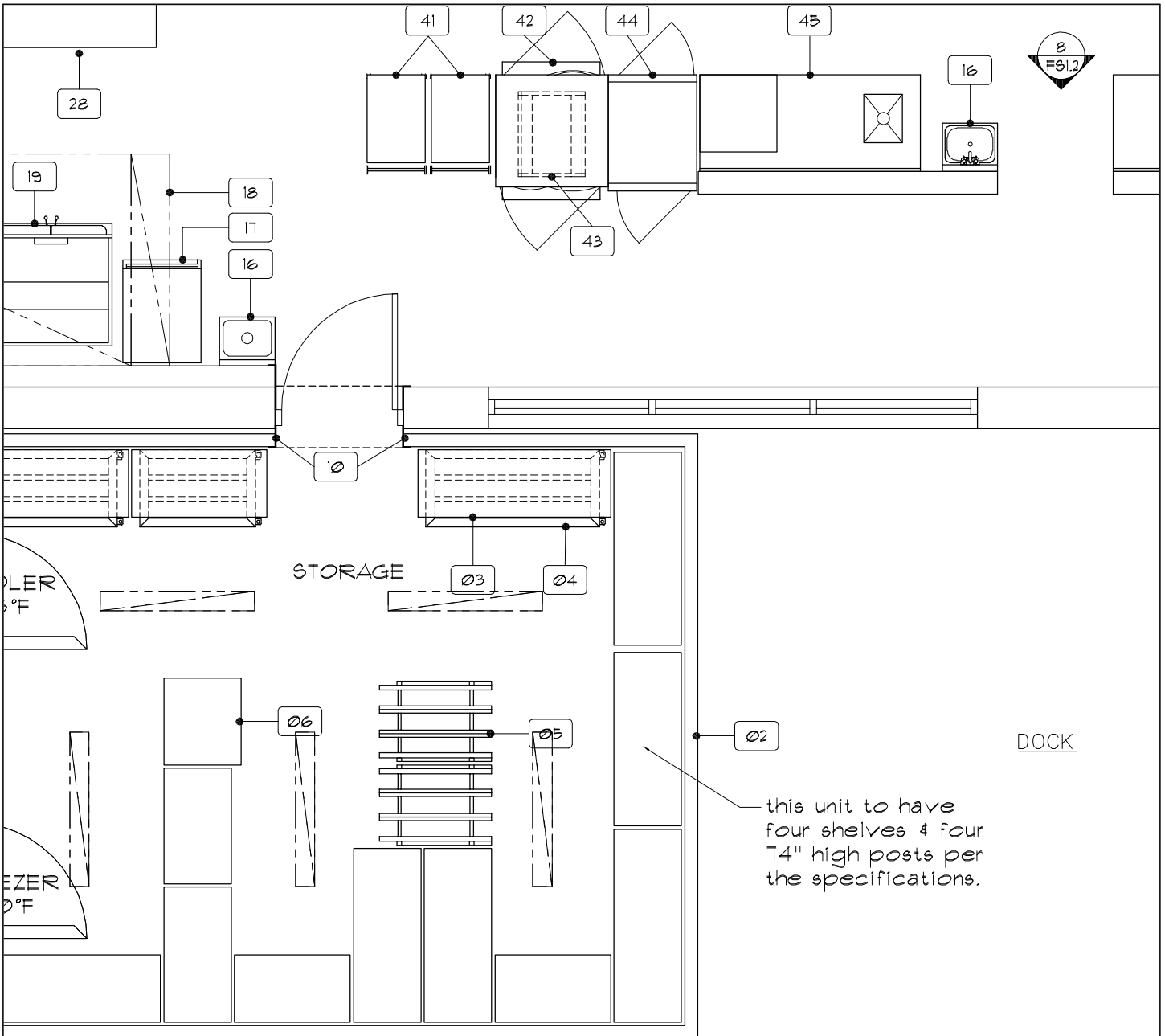
Drawing Addendum Number 1 - FS1.1.1

The following items are acceptable as substitutions to the items specified:

There none submitted or approved. The bid will be as specified.

Sincerely,

Rocky Sturm, CFSP



1 FOODSERVICE EQUIPMENT ARRANGEMENT PLAN

1/4" = 1'-0"

HALE HIGH SCHOOL

6960 E. 21ST STREET, TULSA, OKLAHOMA

PROJECT NUMBER 2022.15

SHEET NUMBER FS1.1.1

ADDENDUM NUMBER 1

DATE: 10/18/2022

STURM CONSULTING, INC. FOODSERVICE DESIGN & PLANNING

5838 SOUTH HUDSON PLACE
TULSA, OKLAHOMA 74136
PHONE (918) 260-0887
FAX (918) 489-3933
rockysturm@cox.net



10/18/2022

Chris Hudgins
Tulsa Public Schools
3027 South New Haven Avenue
Tulsa, Oklahoma 74114

Re: Memorial High School

Dear Chris,

The following are items for Addendum #1.

The following are clarifications to the items specified:

ITEM NO. 26 - STAINLESS STEEL WINDOW SILL (1 REQUIRED)

Custom fabricated stainless steel window sill to be constructed per the drawings from fully welded 16 gauge type 304 stainless steel. The stainless steel sill to extend the full width and the full depth of the window sill. Turn the front edge down 2" with a raw edge. Attach the sill with industrial adhesive. Seal the sill with silicone caulking.

ITEM NO. 33 - MOBILE COMBI-OVEN (1 REQUIRED)

Rational model ICP 6-FUL/6-FULLL NG with all the standard features.

Accessories

- 1 ea. 208 volts, single phase.
- 1 ea. Hinge the doors on the right.
- 1 kt. Model 60.74.725 combi-duo staking kit.
- 1 ea. Model 60.31.635 mobile combi-duo kit.
- 1 lot CAP program.
- 1 lot Model 9999.2271 certified installation.
- 1 ea. Model 8720.1569US installation kit.
- 2 ea. Model 60.76.317 external core temperature probe.
- 1 cs. Model 56.01.535 detergent tablets.
- 1 cs. Model 56.00.598 defoamer tablets.
- 1 cs. Model 56.00.562 care tablets.
- 1 ea. Model 1900.1150US water filter system. Mount the unit on the side of the unit with stainless steel screws.
- 2 ea. Model 1900.1155US replacement cartridges.
- 1 ea. Provide with Dormont model W50BP2Q48PS water hose. Provide to the plumbing contractor for installation.
- 3 ea. Provide with Dormont model W50BP2@48 water hose. Provide to the plumbing contractor for installation.
- 1 ea. Provide with Dormont model 1675KIT2S48 gas hoses. Provide to the plumbing contractor for installation.
- 1 ea. Provide with Dormont model 1675KIT2S48PS gas hoses. Provide to the plumbing contractor for installation.

ITEM NO. 62 - DROP-IN COLD FOOD WELLS (1 REQUIRED)

Low Temp Industries model DI-2050TA with all the standard features.

Accessories

- 1 ea. 120 volts, single phase.

The following are changes to the drawings:

There are no revisions at this time.

The following items are acceptable as substitutions to the items specified:

There none submitted or approved. The bid will be as specified.

Sincerely,

Rocky Sturm, CFSP

10/18/2022

Chris Hudgins
Tulsa Public Schools
3027 South New Haven Avenue
Tulsa, Oklahoma 74114

Re: Bell Elementary School

Dear Chris,

The following are items for Addendum #1.

The following are clarifications to the items specified:

ITEM NO. 20 - AIR CURTAIN (1 REQUIRED)

Mars Air Systems model N242-1UA-SS with all the standard features. Mount with stainless screws per the manufactures requirements.

Accessories

1 ea.	120 volts, single phase with a cord and plug.
1 ea.	Model 99-014 level 1 control package.
1 lot	Model J2142 filter kit.

The following are changes to the drawings:

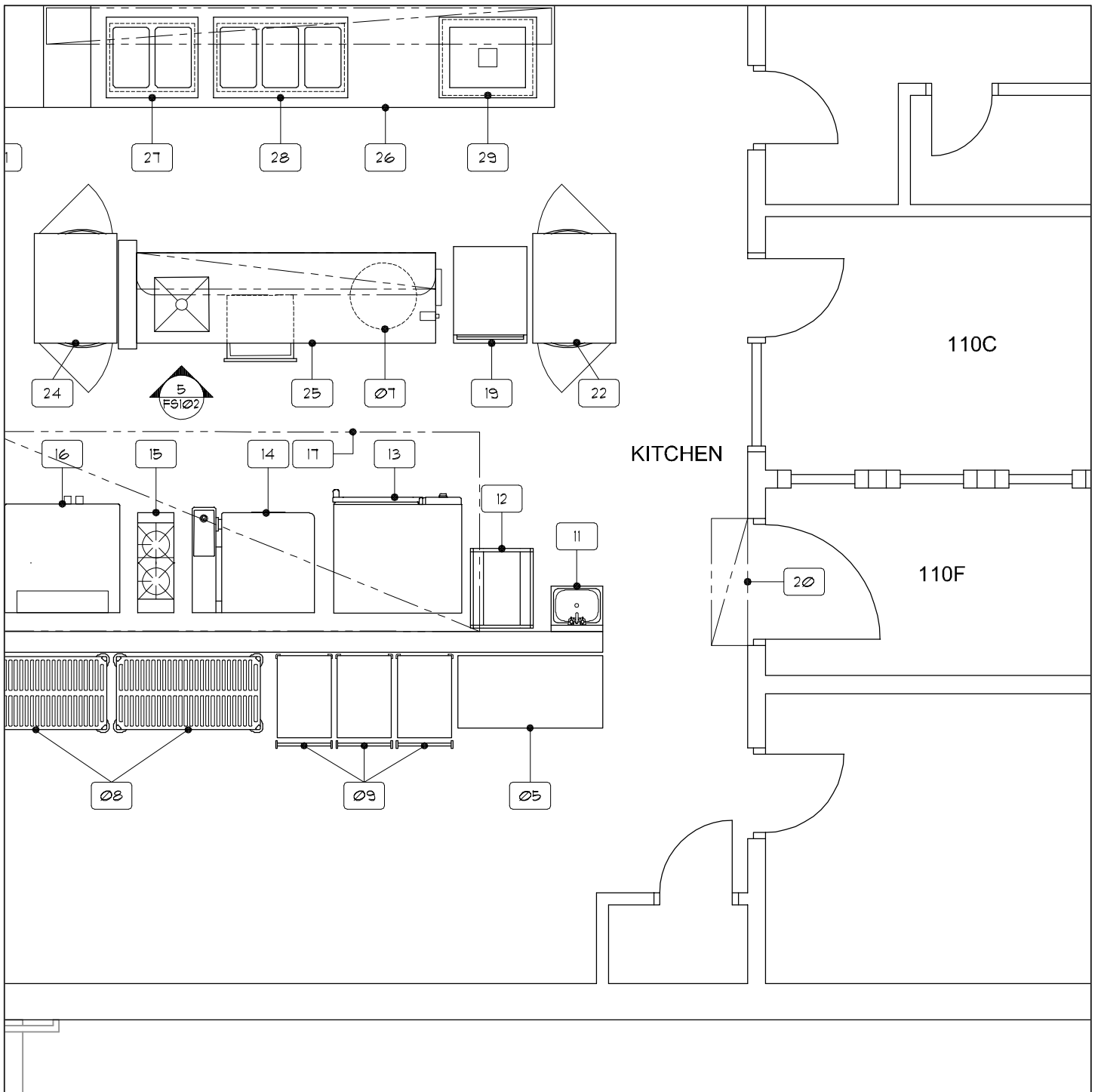
Drawing Addendum Number 1 - FS1.1.1

The following items are acceptable as substitutions to the items specified:

There none submitted or approved. The bid will be as specified.

Sincerely,

Rocky Sturm, CFSP



1 FOODSERVICE EQUIPMENT ARRANGEMENT PLAN

1/4" = 1'-0"

BELL ELEMENTARY SCHOOL

6304 E. ADMIRAL BLVD., TULSA, OKLAHOMA

PROJECT NUMBER 2022.25

SHEET NUMBER FS1.1.1

ADDENDUM NUMBER 1

DATE: 10/18/2022

STURM CONSULTING, INC.
FOODSERVICE DESIGN & PLANNING

5838 SOUTH HUDSON PLACE
TULSA, OKLAHOMA 74135
PHONE (918) 260-0887
FAX (918) 489-3933
rockysturm@cox.net

