

Facilities, Planning and Construction

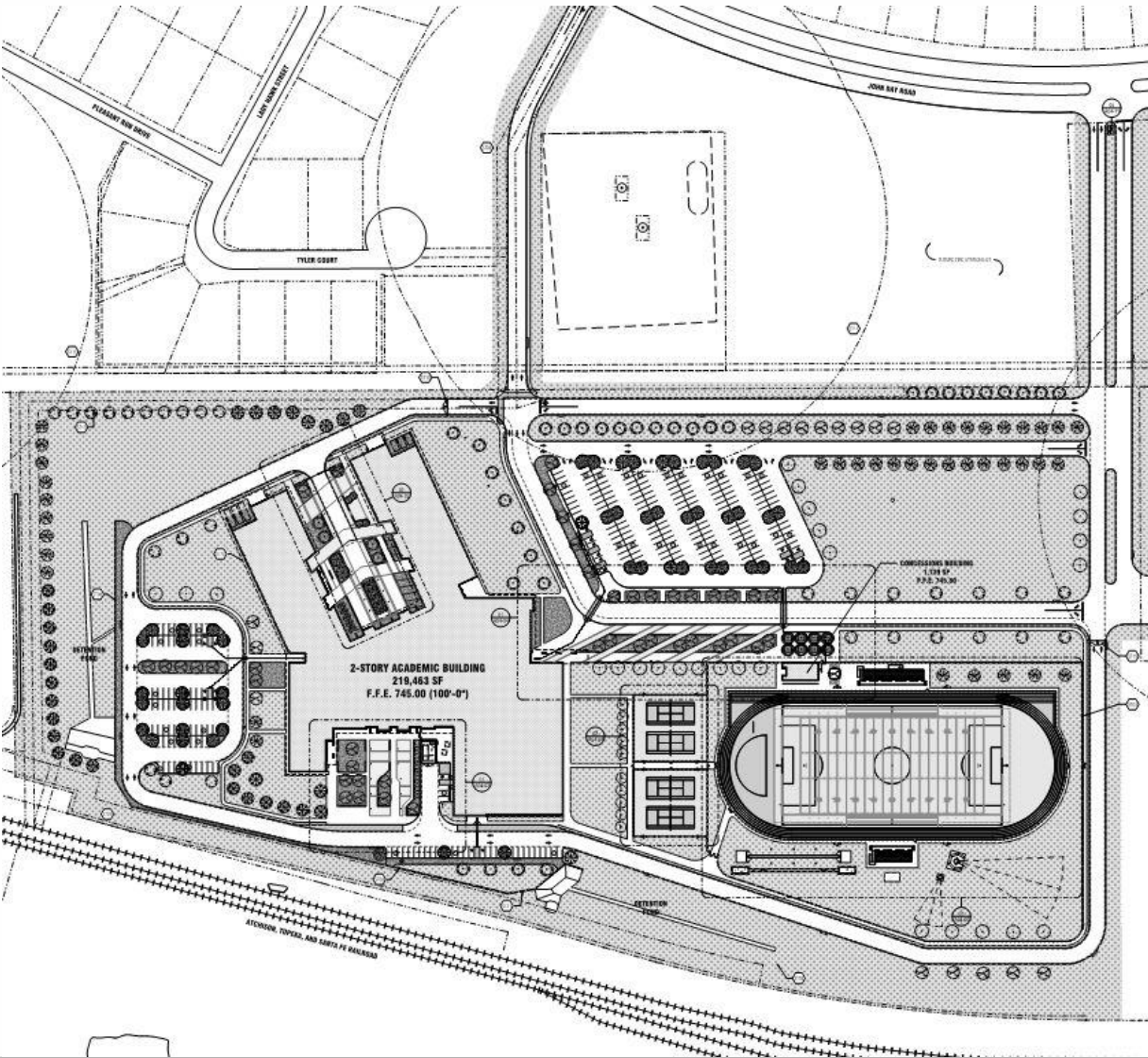
October 17, 2022



Construction Update:

- C.W. Worthington Middle School #7
- Carter Elementary School #21
- Daniel Elementary School #22
- Hatfield Replacement ES
- Seven Hills Replacement ES
- Northwest HS – Renovations & Additions
- Pike Replacement MS (no photos)

C.W. Worthington - Middle School #7











Carter Elementary School #21



Daniel Elementary School #22



Hatfield Replacement ES



Seven Hills Replacement ES



Northwest HS – Renovations & Additions





www.nisdtxconstruction.org

NORTHWEST ISD

LONG RANGE PLANNING COMMITTEE

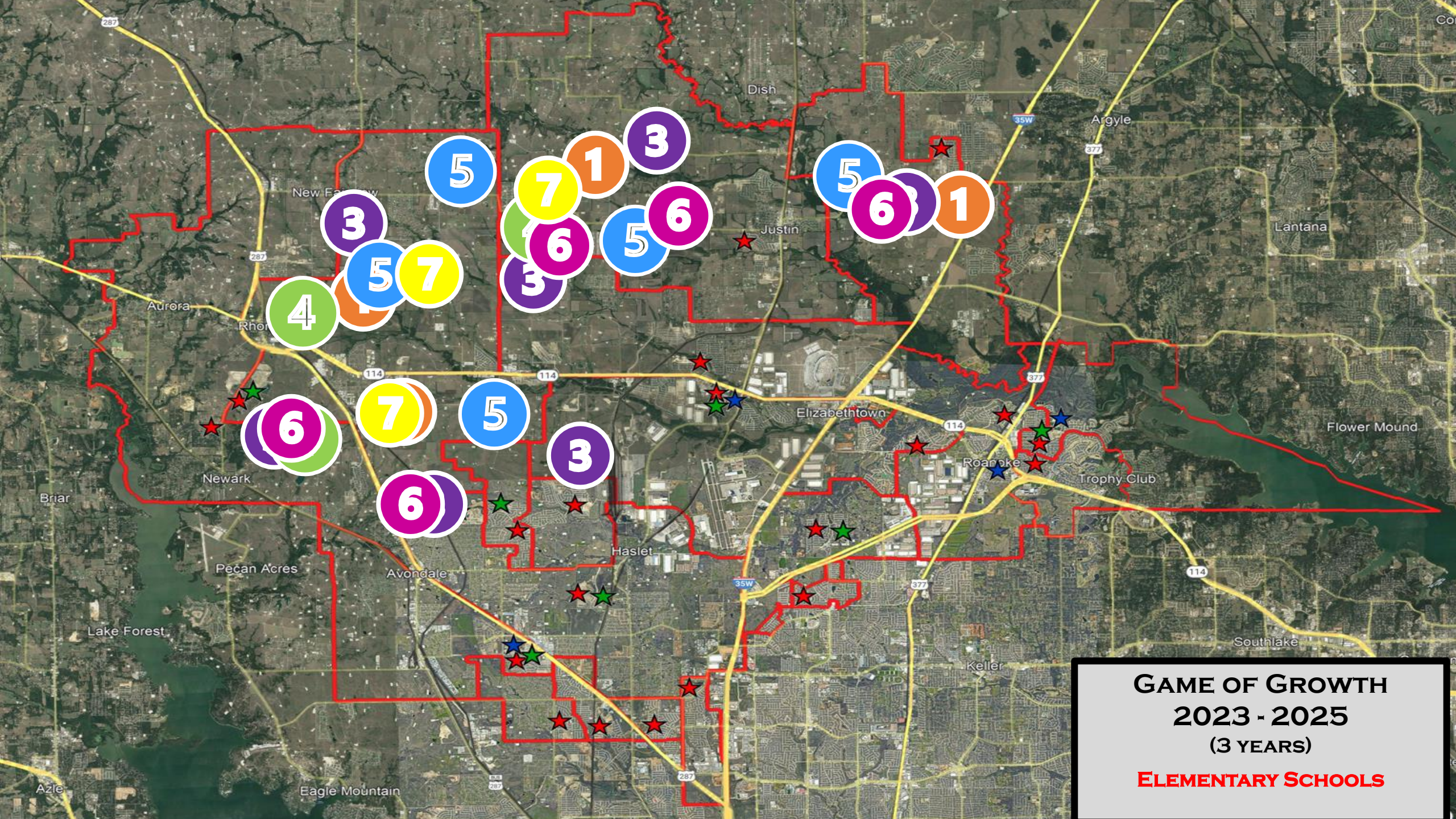


Meeting #3 Summary

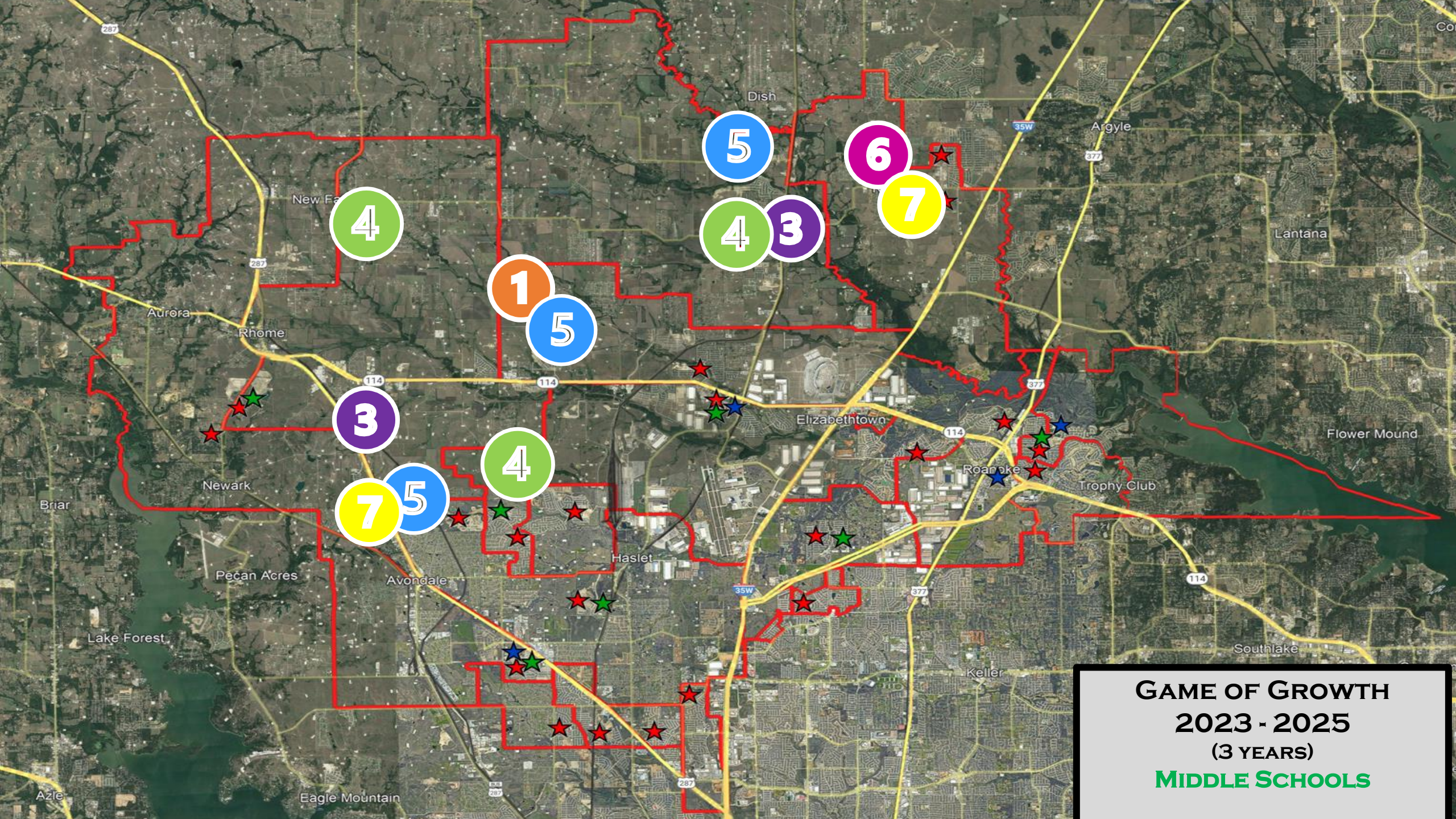
Game of Growth

Committee Responses

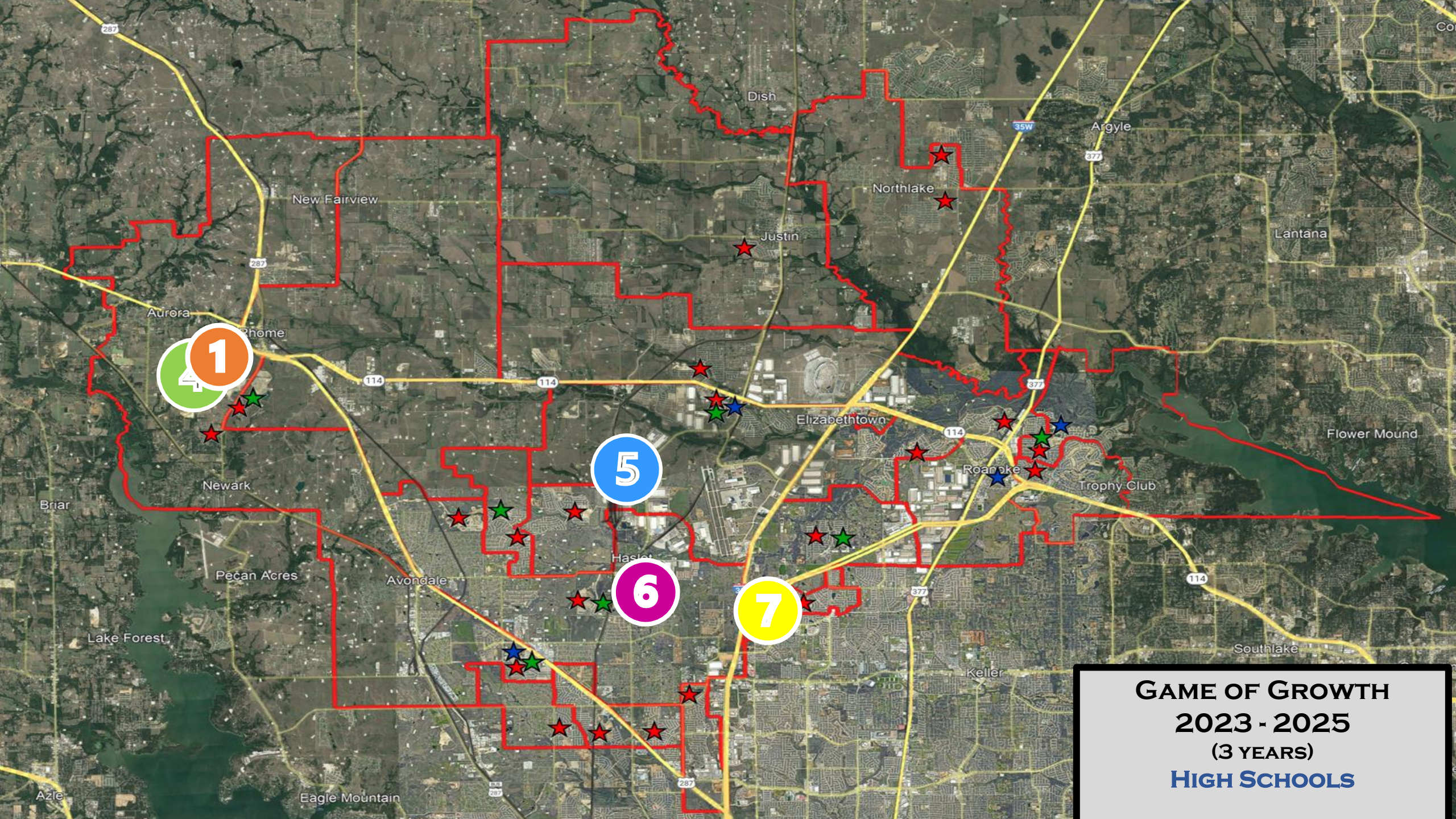




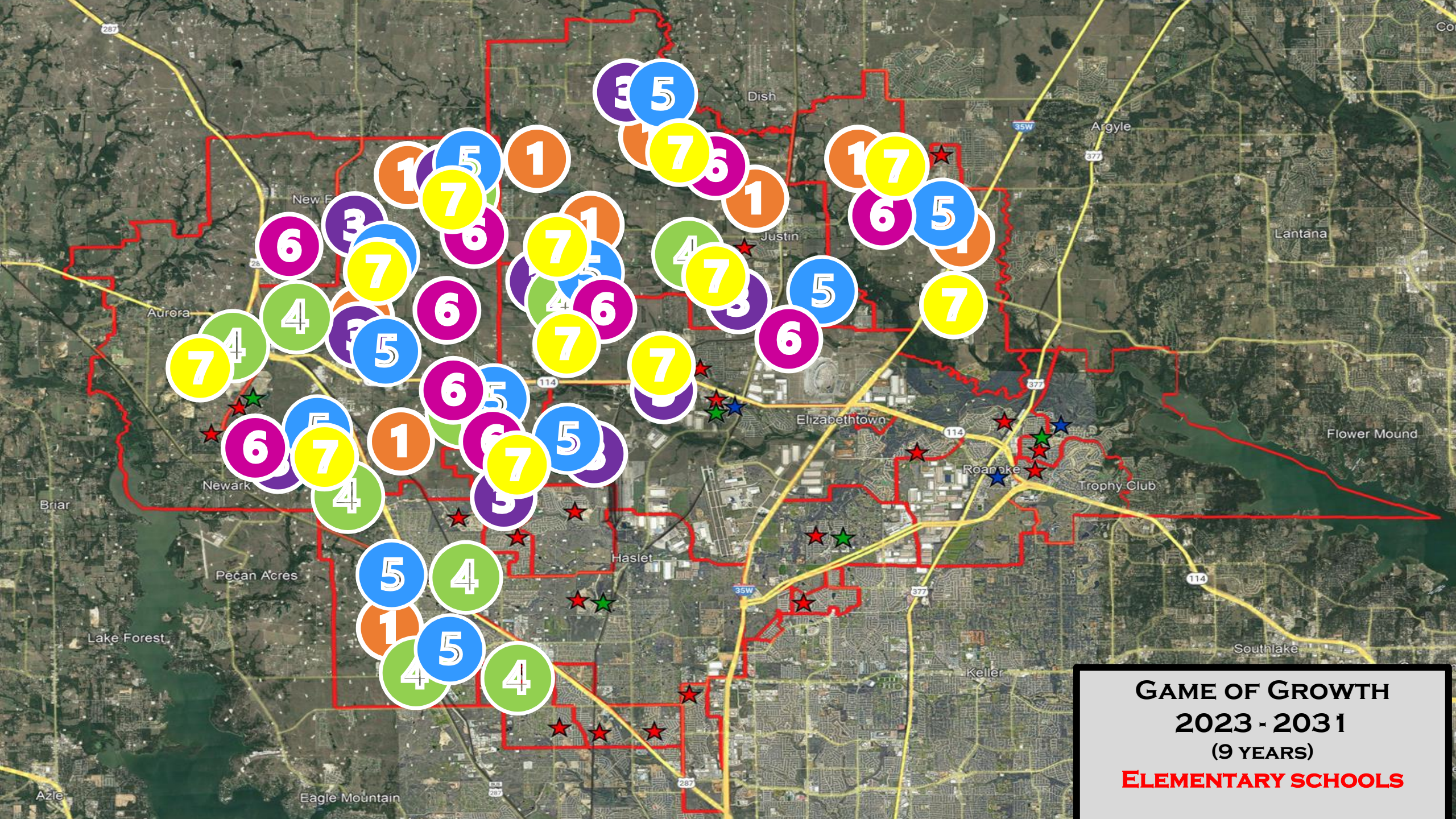
GAME OF GROWTH
2023 - 2025
(3 YEARS)
ELEMENTARY SCHOOLS



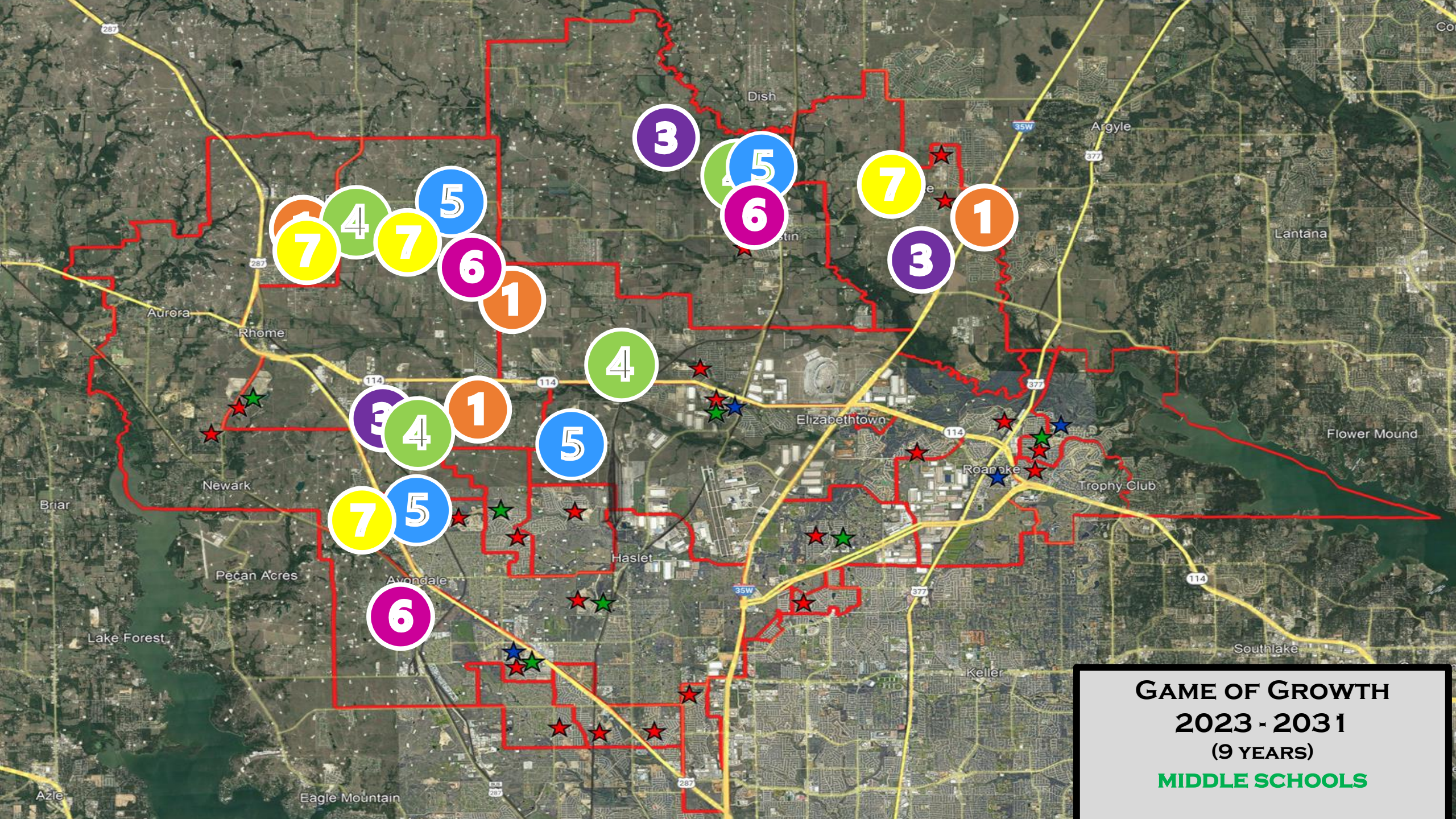
GAME OF GROWTH
2023 - 2025
(3 YEARS)
MIDDLE SCHOOLS



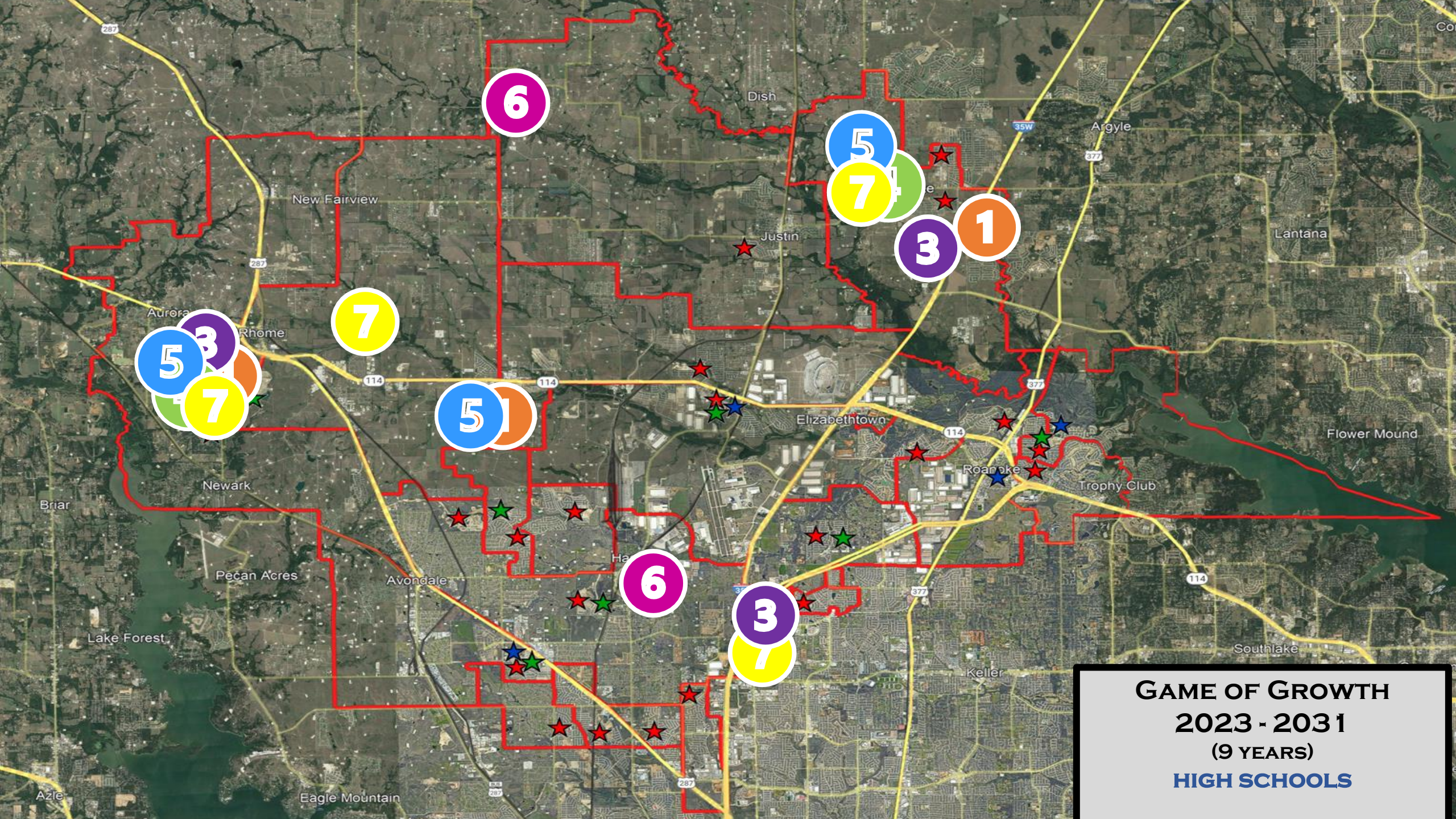
GAME OF GROWTH
2023 - 2025
(3 YEARS)
HIGH SCHOOLS



GAME OF GROWTH
2023 - 2031
(9 YEARS)
ELEMENTARY SCHOOLS



GAME OF GROWTH
2023 - 2031
(9 YEARS)
MIDDLE SCHOOLS

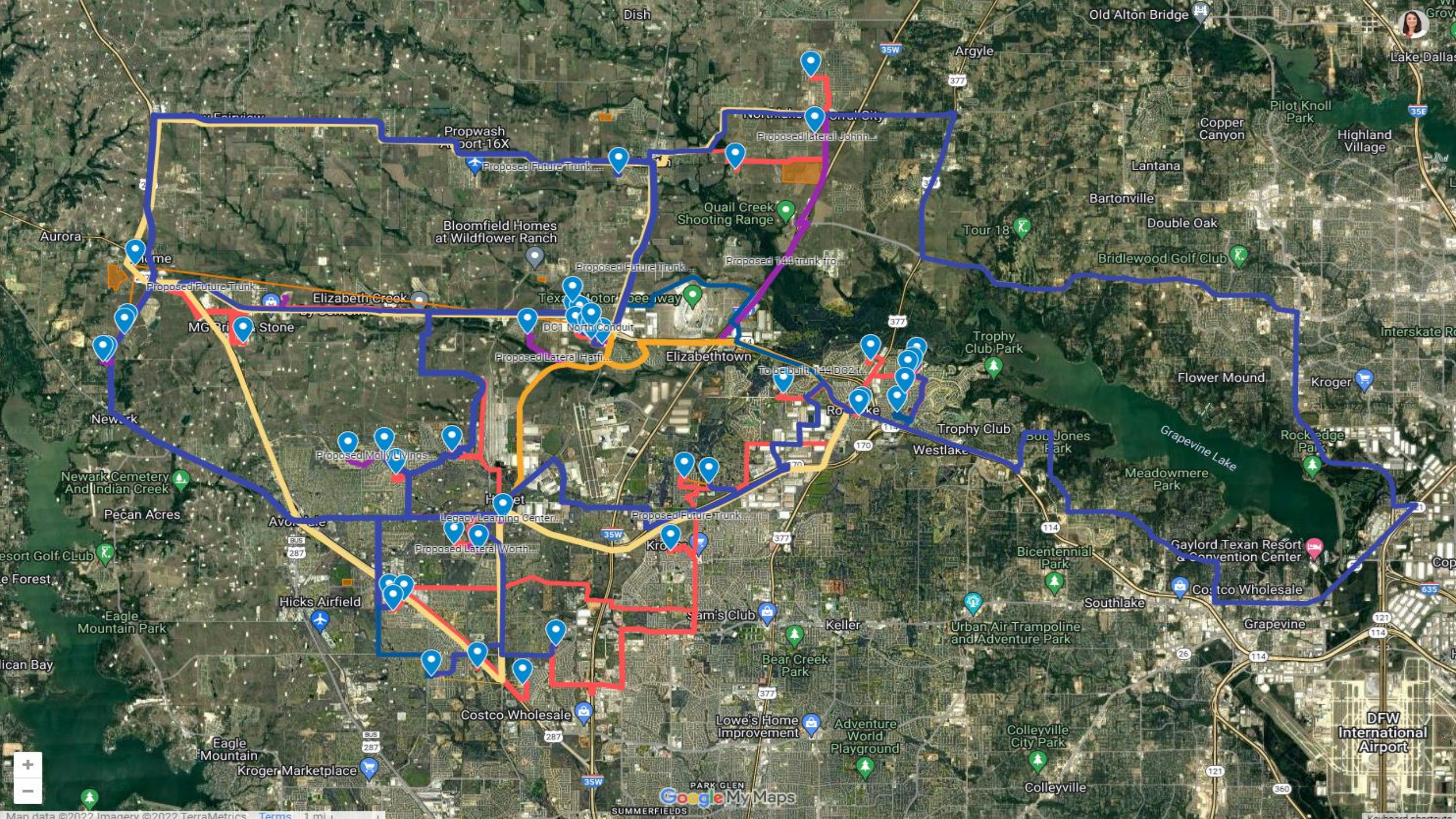


GAME OF GROWTH
2023 - 2031
(9 YEARS)
HIGH SCHOOLS

Technology Program Overview

- What are the achievements of technology in Northwest ISD?
- How does technology fit into long range planning?
- What are next steps for planning?







Technology Project Considerations

Potential Project	Location	Notes
Device refresh for teachers and students	Districtwide	Waterfall
Data center upgrades	2 locations (Admin & Steele)	Maintain equipment
Infrastructure refresh	Districtwide	Wireless, security firewall, switchgear, servers etc.
Informacast PA expansion and upgrade	Districtwide	HD clocks
Cybersecurity	Districtwide	Enterprise agreement, SEIM, firewall, monitoring & utilities
Phones	Districtwide	Enterprise agreement & hardware
Security camera growth, maintenance, and hardware	Districtwide	Upgraded feature set
Resilient fiber connectivity for future growth	Districtwide	
Access control growth and maintenance	Districtwide	

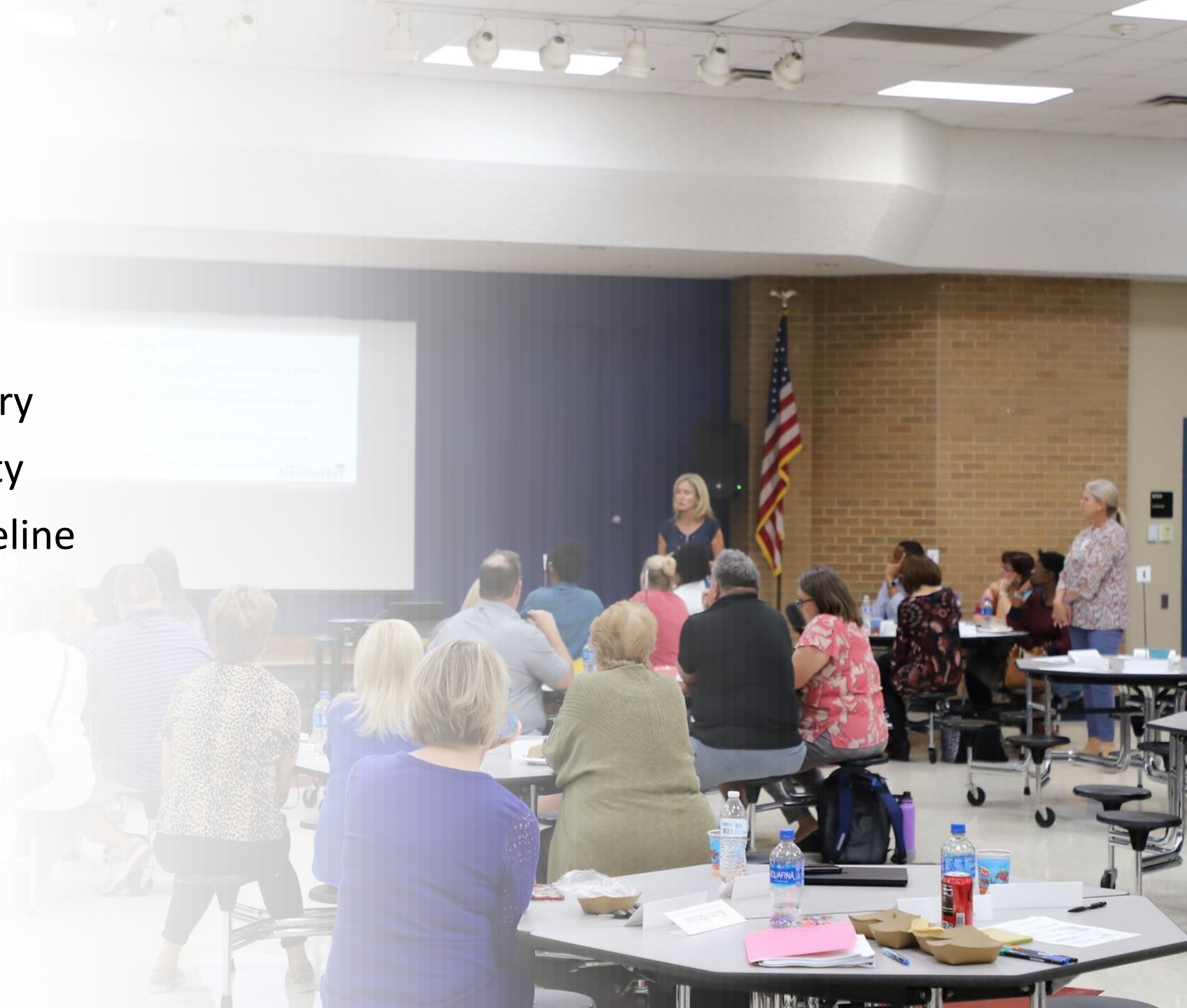
Pre-Kindergarten

Northwest ISD



Pre-Kindergarten & ECSE Summary

- Pre-Kindergarten Summary
- Pre-Kindergarten Eligibility
- State's Requirement Timeline
- NISD's Historical Data
- NISD's Enrollment
- NISD ECSE numbers
- Tuition
- Challenges
- Considerations



6 Year Historical Data

*started 21-22 with 370 students

School Year	Number of Campuses	Enrollment	Notes
2016-17	9	235	Tuition PreK was not offered at this time.
2017-18	10	299	First year for tuition and it was offered at 7 campuses. Added PK at Lakeview.
2018-19	12	360	Tuition at all 12 campuses. Added PK at Curtis and Haslet
2019-20	13	401	Tuition at all 13 campuses. Added PK to Lance Thompson
2020-21	14	359	15 actual programs, English and DL at PV full day, full day at Love (No tuition for full day programs) Added PK to Hatfield
2021-22	16	482*	18 programs
2022-23	17	560	21 programs

Total Enrollment

as of September 28, 2022

Campus	AM	PM		Total
Berkshire	17	17		34
Cox	17	12		29
Haslet	19	15		34
Hatfield	19	17		36
Lakeview	13	8		21
Lance	11	11		22
Lance	11	10		21
Lizzie Curtis	21	18		39
Peterson	20	19		39
Nance	16	17		33
Sendera	19	17		36
Seven Hills	16	13		29
Thompson	18	17		35
Hughes			21	21
Clara Love			20	20
Justin			15	15
Prairie View			20	20
Prairie View - DL			16	16
Prairie View - DL 2			16	16
Roanoke- DL			22	22
Roanoke- DL			22	22
	217	191	131	560

At capacity

ECSE

over 500 child find intakes this year

*2022-23 numbers do not reflect any summer or fall testing that is already underway

Concerns: moving to full day, space, staffing, ARD meetings, evaluations

Year	BOY	EOY	Intakes	ECSE from CF	Number of Units
2017-18			354	63	6
2018-19			400	65	8
2019-20	70	134	397	66	9
2020-21	54	133	436	55	10
2021-22	71	138	536	97	9
2022-23	135		200 as of 8/9/22	8	10

Challenges

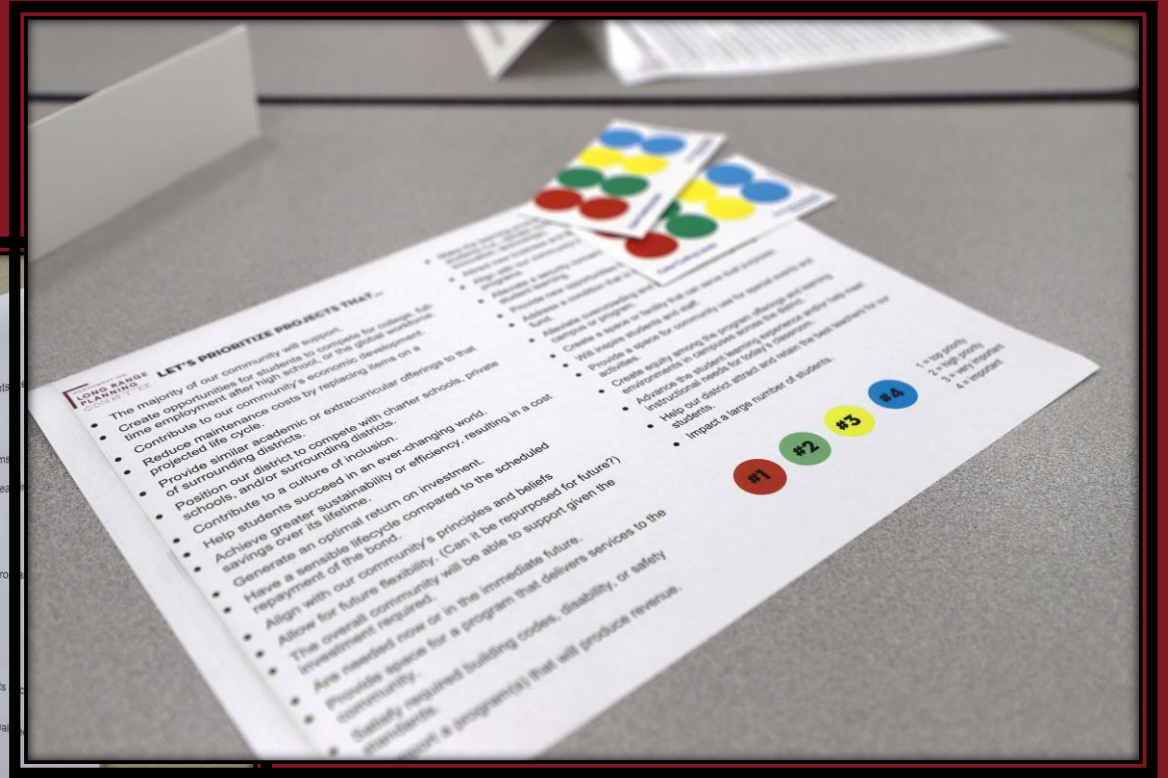
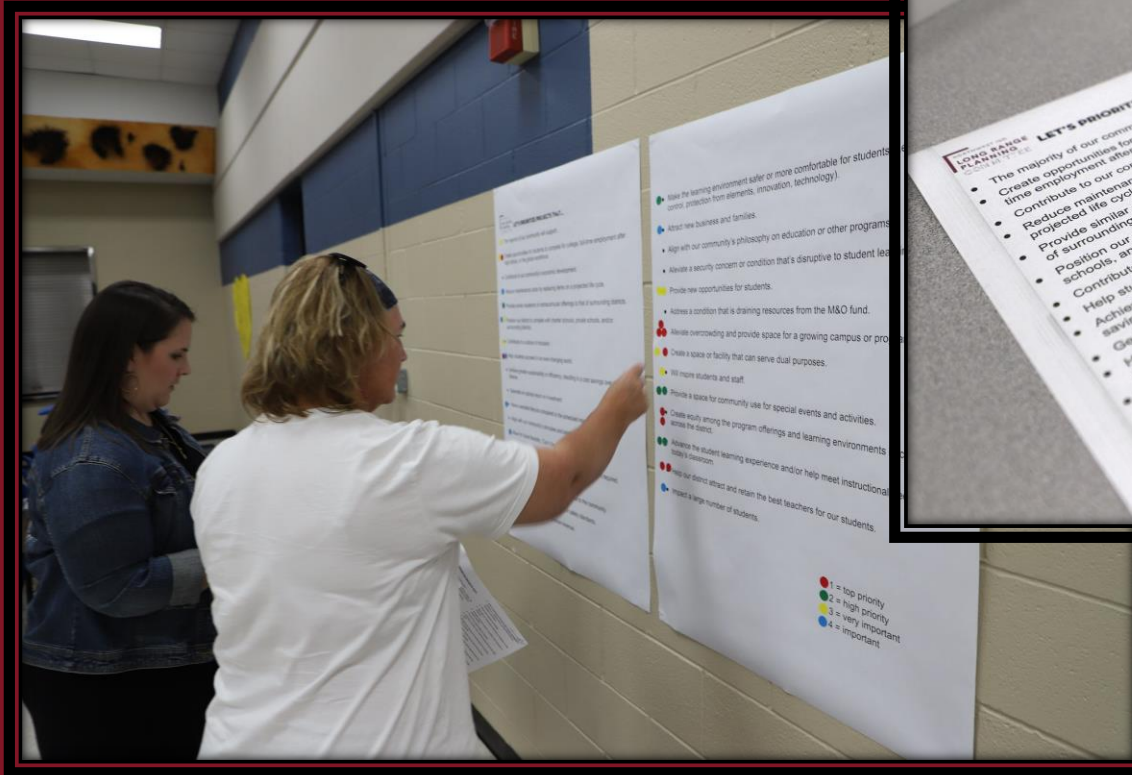
- Full day programs show greater gains than half day programs
- We do not offer full day programs at all campuses
- We do not offer tuition with full day programs
- Space is limited
- Hard to predict PK numbers

Considerations

- Early Learning Centers
 - 4 locations
 - Staff daycare
 - Serve more students because we also accept tuition-based students
 - Customize learning opportunities throughout the building
- Add additional classrooms to all locations to account for more PreK and ECSE students
 - Each campus would need a minimum of 4 additional classrooms (2 PK and 2 ECSE)



Weighting Factors & Grading Criteria



Prioritization Framework

COMPREHENSIVE

Allows for a comprehensive evaluation of each project

CONSISTENT

Establishes a consistent series of factors to determine priorities

FAIR COMPARISON

Focuses the discussion on priorities even as each project is different

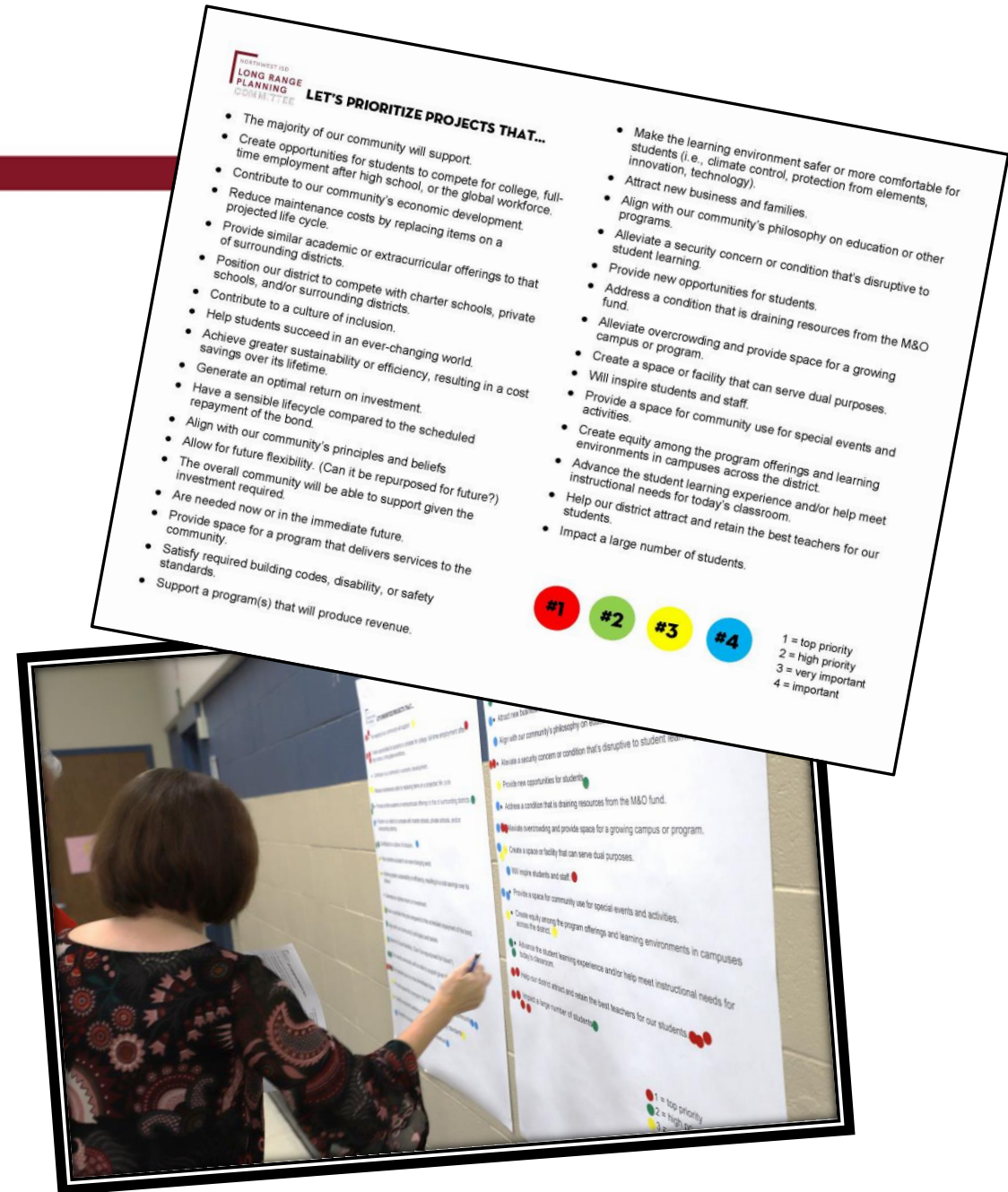
COMPLETE LOOK

Assists in considering the overarching priority all projects

Ranking Priorities

Hot Dots Activity

- Review the handout.
- Determine your priorities.
- During the tour find the posters and place your dots on the priorities that are most important to you.
- Use the key on the handout.
 - Red dot = Top Priority
 - Green dot = High Priority
 - Yellow dot = Very Important
 - Blue dot = Important
- Use all your dots. There will be more factors than you have dots. Choose wisely!

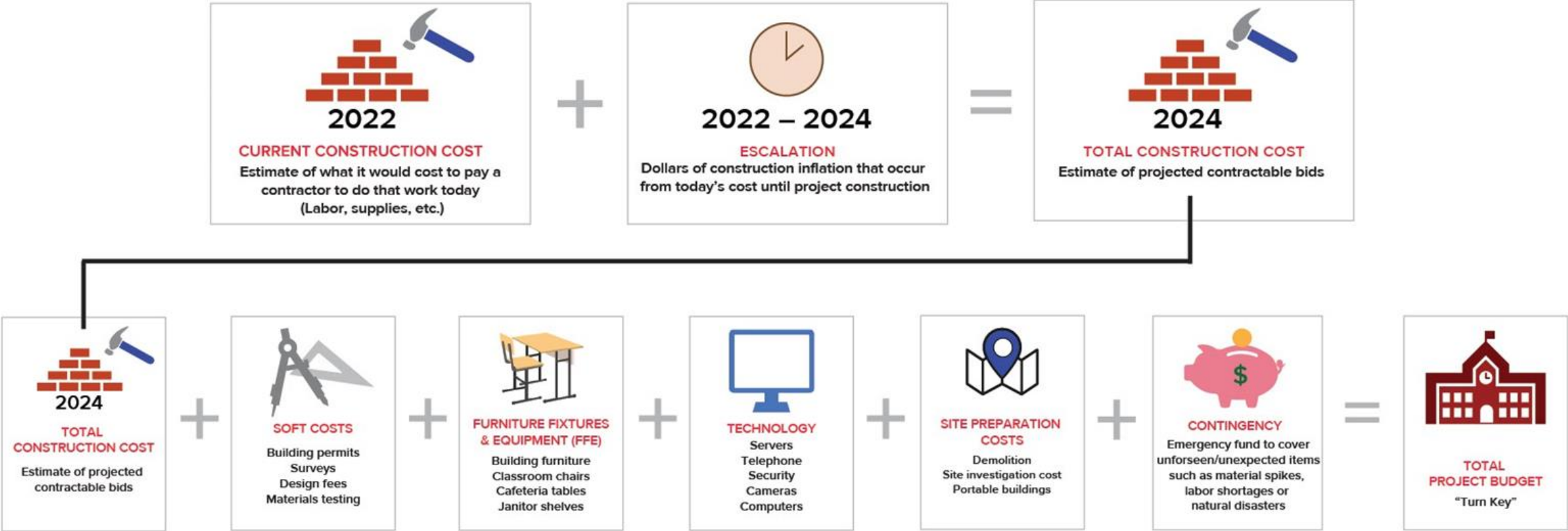


Construction Cost Forecasting

Panel Discussion



Building a Bond Budget



Committee Schedule

	Date	Location
Meeting 1	Tuesday, September 6	Legacy Learning Center
Meeting 2	Tuesday, September 20	Berkshire Elementary School
Meeting 3	Tuesday, October 4	Justin Elementary School
Meeting 4	Tuesday, October 18	Chisholm Trail Middle School
Meeting 5	Tuesday, November 8	Adams Middle School
Meeting 6	Tuesday, November 29	Eaton High School
Meeting 7	Tuesday, December 13	Northwest High School
Meeting 8	Tuesday, January 10	Legacy Learning Center
Recommendation	Monday, January 23	Administration Building
Board Meeting	Monday, February 13	Administration Building

Committee Transparency

NORTHWEST ISD
LONG RANGE
PLANNING COMMITTEE

HOME COMMITTEE MEETINGS RESOURCES QUESTIONS

NISD Long Range Planning Committee

As one of the fastest growing school districts in the state that attracts more than 1,400 new students each year, we must continually evaluate our facilities and support systems to determine if our learning environments, equipment and infrastructure are equipped to best support the future of our growing student population.

To assist us in this effort, we rely on input from members of the NISD Long Range Planning Committee (LRPC). The LRPC helps us study and prioritize the facility needs of the school district and assists us in providing recommendations to the Northwest ISD Board of Trustees on possible future building projects.

This website has been created to keep our community informed on the progress of the committee and the facility planning process that led to the 2017 bond election.

THE LRPC IS INVALUABLE TO THE PLANNING PROCESS BECAUSE IT ALLOWS THE DISTRICT TO HEAR FROM AND INCORPORATE MANY DIFFERENT PERSPECTIVES FROM PEOPLE IN THE COMMUNITY.

MEETINGS

The LRPC will meet at least six times in 2019-2020 before making its recommendation to the Board of Trustees.

View Meeting Details

RESOURCES

A variety of resources, from administrative liaisons to helpful documents, are available to the LRPC.

See Resources

QUESTIONS

Citizens can submit their own questions or view a list of Frequently Asked Questions.


Submit a Question

NORTHWEST ISD
LONG RANGE
PLANNING COMMITTEE

HOME COMMITTEE MEETINGS RESOURCES QUESTIONS

Meetings

LRPC Meetings



MEETING #1 - TUESDAY, OCTOBER 8, 2019

6:00 p.m.

NISD Administration Building
Board Room

Agenda

Presentation

Meeting Notes

nisdtxlrpc.org