



# Our Global Dimension

www.jesuitportland.org



**1540** Society Of Jesus Formed



Almost 500 Years of Jesuit Education, Tradition and Innovation



**2019 - 2029**

The Next 10 Years

Universal Apostolic Preferences



Showing The Way To God



Walking With The Excluded



Journeying With Youth



Caring For Our Common Home

## 1 Global Community

**6** Regions  
Latin America  
North America  
Europe, South Asia  
Asia Pacific, Africa

**72** Countries



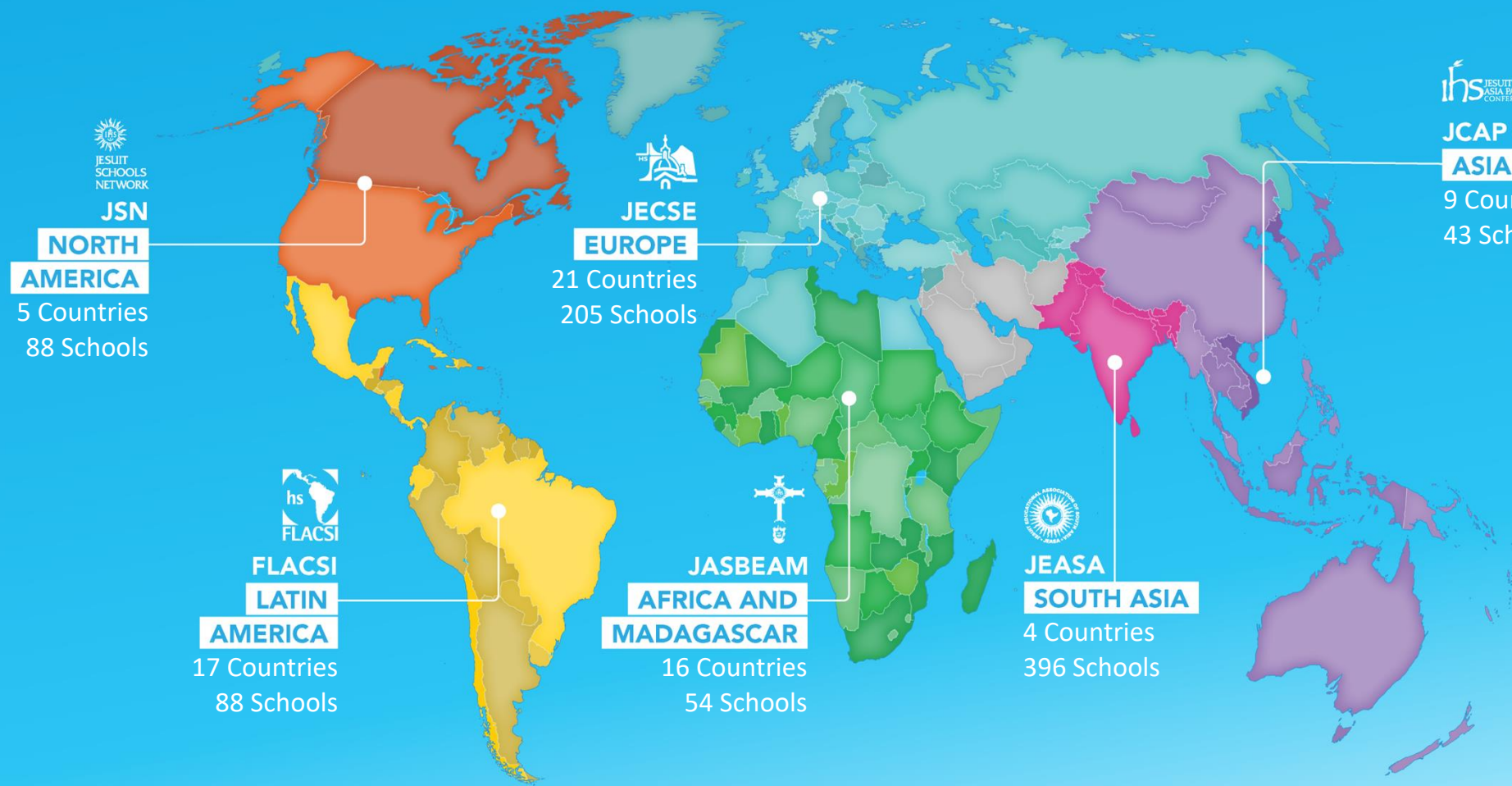
**874** Jesuit Schools

**870,746** Students

**88 Schools** in North America



JESUIT SCHOOLS NETWORK



**FE Y ALEGRÍA**

1,847 Schools & Education Projects

**JRS**

**JRS**

98 Schools & Education Projects

## Opening Our Students' Eyes And Hearts To The World Around Them!



Global Social Justice projects



Global Connected Classrooms



Global Exchange Programme



Global Citizenship



educate magis



Jesuit Global Network of Schools

Educate Magis is the global community of educators from Jesuit and Ignatian schools

