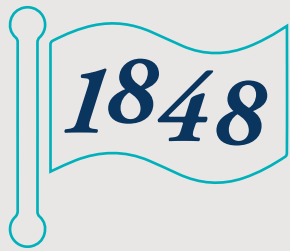


Founded in



17%  
INTERNATIONAL  
STUDENTS



26  
U.S. states  
&  
29  
countries  
represented

160  
COURSE OFFERINGS

72% of day students  
receive aid



Total aid awarded  
to day students  
**\$1.375 MILLION**



21  
quiet spots in the library  
for getting your study on!

## BLAIR by the numbers



State-of-the-art  
labs in the  
Bogle Science  
Center

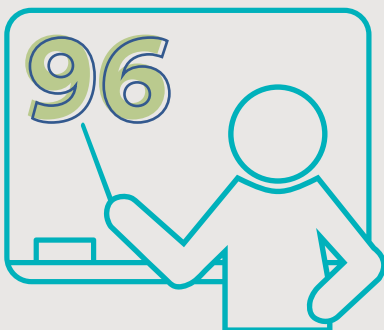


25  
annual  
Society of  
Skeptics  
speakers



54  
Honors, advanced  
placement & post-AP  
course offerings

**WANT TO  
LEARN MORE?**



96  
FACULTY MEMBERS



**\$13,200**  
Average tuition cost  
per day student on aid



**CONTACT US**  
admission@blair.edu  
(800) 462-5247  
www.blair.edu

# WHAT WILL MY DAY LOOK LIKE?



**Breakfast**  
(optional)  
7:30-8:30 A.M.



**Classes**  
8:30 A.M.-3:15 P.M.

**Clubs**  
(Monday, Wednesday & Friday)  
7 P.M.

**Society of Skeptics Lectures**  
(Tuesday)  
7 P.M.

**Family-Style Dinner**  
(Tuesday & Thursday)  
6:15-7 P.M.

**Roundtable Discussions**  
(Wednesday)  
7 P.M.

**Art Openings**  
(Thursday)  
7 P.M.



**Dinner**  
(optional)  
6-7 P.M.



**Activities/rehearsals/  
athletic practices**  
3:45-5:30 P.M.



**Free time**  
Meet up with friends  
in the Can  
7 P.M.



**Head home  
for the night**  
8 P.M.