



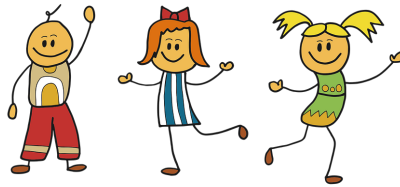
Lincoln Elementary School After School Program **GROWING GREAT MINDS- SESSION 1**

We Strive to provide quality academic and enrichment classes to all students in
Grades K through 5.

October 10th-November 18th-(six weeks)

Monday, Tuesday, and Thursday from 3:30 - 4:45

***NO CLASSES ON:
Thursday October 20 and Thursday Oct 27th***



****We strive to provide your child with fun, engaging, and enlightening
academic and enrichment classes.***

**PLEASE NOTE: CLASS SIZES ARE LIMITED SO RETURN YOUR FORMS AS SOON AS
POSSIBLE. IF CLASSES ARE FILLED YOUR CHILD MAY NOT BE ABLE TO PARTICIPATE
THIS SESSION**

Registration Forms: Please fill out all forms completely and return by September 30th

The Wausau School District does not discriminate on the basis of race, age, color, religion, national origin, ancestry, creed, pregnancy, marital status, parental status, sexual orientation, sex (including transgender status, change of sex or gender identity), or physical, mental, emotional, or learning disability ("Protected Classes").

Description of Class Choices

Sharpen the Saw - (3 days per week-Grades K-2 with Ms Ally & 3-5 with Mrs. Lehman).

Working together through games, crafts, inside and outside activities, and special guests, come and learn some tools, tricks, and techniques to apply to your life to help *sharpen your saw* and keep our minds and bodies in tip top shape!

Sewing - (3 days per week-Grades 4 & 5) Mrs. Bennett is teaching a sewing class where students will learn sewing basics as well as other sewing techniques. This class is for 4-5th graders and has capacity for six to eight students. Students will be involved in this class all 3 nights of the week for the entire session.

Magnificent Math - (3 days per week - Grades 2-3) Don't think you are here just to learn math!!! You will love playing the fun games Miss Susan has ready for you!

B I N G O - (Mondays-Tuesdays-Thursdays - see attached schedule) Miss Cindy is here to share her passion of playing BINGO! Each week will be a new themed bingo game with fun little prizes.

Kindness Counts - (Grades 3-5 Mondays and Grades 1-2 Tuesdays) Ms. Kramar has so much fun planned! Here is a chance to spread kindness while strengthening your leadership skills. We plan to do activities that involve arts and crafts, plus rock painting and a walk to the park to hide rocks for the community. We invite students to gather ideas and create activities to share with the group to promote kindness at Lincoln School.

Roller Blading (Mondays Grades 3-5) Join in on a popular recreational activity that involves gliding on skates around the school grounds. This class will strengthen your balance and your patience and perseverance as well!

Hmong Language (Grades 3-5 Tuesdays and Thursdays) Strengthen or learn the Hmong Language! This is the first session of a four part series, but you can join at any time. Students will learn to speak, read and write simple words, phrases, and sentences in the Hmong language. They will also get the opportunity to listen to stories.

Kiddin Around Yoga (Mondays-Grades K-5) Welcome recruits! You've been selected to attend a secret yoga spy training. Your mission, should you choose to accept it, is to complete a series of checkpoints and earn your spy certification by going undercover to develop strong minds and bodies! Our code breaking training will be more fun than you ever thought possible, with special operative missions that are physically, musically, and artistically challenging! Let's create healthy self-esteem and body awareness with feelings of joy and peace in this wildly awesome class!

Macrame (Tuesdays Grades 3-5) Macrame is an art form that uses different knots in string to create everything from jewelry to decorations and household items. In this class, we will learn several beginner knots and use them with different types of string to create a wall hanging and some jewelry.

M & M's (Thursdays Grades 1-2) **Mega & More! Marvelous & Magnificent! Much & Many! Merkel & Math!** Are you ready to join in on **mega** fun games and **many marvelous** activities with Mrs. **Merkel** that will keep you moving forward with your **math** skills? It's **much more** fun in a group and you are sure to have a **magnificent** time!

Play it Safe! (Thursdays- Grades K-2) The friendly staff from the Women's Community Shelter will be here with a program where students will be involved in fun activities, stories and games fostered around the topic of being safe. Overall, this program will promote self-esteem and confidence and do so in a fun and friendly way.

Martial Arts/Self Defense (Thursdays grades 3-5) Come and learn the basics of self defense techniques. This includes being aware of your surroundings, avoiding strangers, using your voice to draw attention and weakness, avoiding confrontation, basic blocks, and more!

General Guidelines for Kids on the Grow

- Class size may be limited and if class fills, students will be chosen randomly to participate, and alternate classes will be offered to those not chosen.
- If there is a discipline problem during the program, the child receives one warning and a call home to the parents. The second offense will result in removal from all remaining classes for that session.
- All contact information must be clearly filled out before returning your form. If it is not-form will be returned and you run the risk of losing class choices.
- **A note must be sent to authorize any changes in the after school plan and/or attendance. Call Nancy Dreikosen at 715-261-0970 with any questions or changes.**

Please, be prompt in picking your child up at 4:45 pm at the NORTH SCHOOL ENTRANCE. Program dismissal may be incurred for a consistently late pick-up.

Registration Forms: Please fill out completely and return by September 30th

Student Information

Student's Name _____ Gr. _____ Teacher _____

Parent/Guardian Information: FILL OUT COMPLETELY

Parent/Guardian Name _____

Address _____

Home Phone _____ Work Phone _____ Cell _____

Emergency Contact Name _____

Home Phone _____ Work Phone _____ Cell _____

Email _____

Please let us know if your child has any physical limitations and/or food allergies.

Registration Forms: Please complete the last 4 pages of paperwork and return by September 30

Class choices - Please check the class(es) your child would like:

Every Monday/Tuesday/Thursday (Same group all 3 days)

Sharpen Your Saw - grades K-2 _____

Sharpen Your Saw - grades 3-5 _____

Sewing - grades 4-5 _____

Magnificent Math - grades 2-3 _____

Mondays

Bingo - Mondays grades K-1 _____

Kiddin Around Yoga - Mondays K-5 _____

RollerBlading - Mondays grades 3-5 _____

Kindness Counts - Mondays grades 1-2 _____

Tuesdays

Bingo - Tuesdays grades 2-3 _____

Kindness Counts - Tuesdays grades 3-5 _____

Macrame - Tuesdays grades 3-5 _____

Tuesdays and Thursdays

Hmong Language - Tuesdays and Thursdays grades 3-5 _____

Thursdays

Bingo - Thursdays grades 4-5 _____

M & M's -Thursdays grades 1-2 _____

Play It Safe - Thursdays grades K-2 _____

Martial Arts/Self Defense - Thursdays grades 3-5 _____

I give my permission for my child to participate in G2M "Growing Great Minds"

Name of Child _____ Teacher/Grade: _____

Parent Signature _____ Phones: _____

How will your child get home from the program?

___ Walk/ride bike ___ Will get picked up.

**PLEASE NOTE:* Participation in the G2M programs is a privilege. We do reserve the right to limit participation based on negative or aggressive behaviors exhibited during the school day as well as out of school hours. The principal, parents, and supporting teachers will be involved in this decision.



G2M Health and Behavioral Guidelines

Health Needs: G2M Staff will be trained in First Aid, CPR, and how to administer rescue medication. G2M staff will **NOT** be able to administer scheduled medication. Any prescribed medication will need to be administered prior to the end of the school day. G2M Community Connection is staffed by district employees, community agencies, and high school tutors. G2M strives to create a successful environment for all students with our programs. G2M follows the same behavior guidelines as stated in the **Wausau School District Board Policy 5000, "Student Code of Classroom Conduct."** Please let staff know of any allergies and dietary restrictions.

Behavioral Expectations: The G2M program is designed to ensure students receive the emotional, intellectual, and physical support that is essential for child development and well-being. The Wausau School District and community partner staff provide fun, educational, and challenging activities and seek to maintain an atmosphere conducive to learning. It is our responsibility that each child is in a safe, constructive environment. In order to support this environment, the following rules are to be followed by all G2M participants:

THE RULES:

- Students will be kind and respect themselves, others, and property.
- Students will not behave in a way that disrupts the classroom or school site.
- Students will be on time and prepared for G2M activities.
- Students are not allowed to bring toys or expensive equipment. We are not responsible for lost, stolen, or broken items.
- Students will not have access to their personal cell phones during programming. Phones will remain in their backpack.

DISCIPLINE PLAN:

- **FIRST WARNING:** The child and parent will receive a verbal warning.
- **SECOND WARNING:** The child's parents will be contacted and the child may be suspended temporarily from the program.
- **THIRD WARNING:** The child may be permanently removed from the program, after consultation with all partnering agency staff.

GROUNDS FOR IMMEDIATE REMOVAL: In the event of fighting, misuse of facilities, illegal or sexual activities, possession of drugs or firearms, or other extreme disruptive behavior, the G2M staff has the right to immediately remove the student from the program. The guardians of the students will be contacted, as will local authorities, if necessary. Decisions will be made based on all the information on hand and will be final.

The Wausau School District does not discriminate on the basis of race, age, color, religion, national origin, ancestry, creed, pregnancy, marital status, parental status, sexual orientation, sex (including transgender status, change of sex or gender identity), or physical, mental, emotional, or learning disability ("Protected Classes").

I have read the Health and Behavioral Guidelines

Parent Name (Print) _____ Parent Signature _____

Student Name (Print) _____ Student Signature _____



Registration Forms: Please fill out completely and return by September 30

G2M Student Memberships - THIS IS A ONE TIME ANNUAL FEE. Please disregard if you have paid.

The cost for membership is \$10 per year, or a \$25 maximum per family to offset the cost of supplies. *This is not intended to be a barrier to participation.* Families are asked to pay, as they are able. Whether your child attends one class or several, this is a one-time annual fee. Please note that this membership fee is separate from and should not be confused with any athletic fees, membership fees for outside community agencies or other site-specific special programs or events. Parents can pay the G2M program fee via your Infinite campus portal Parent Portal at <https://tinyurl.com/G2Mafterschool>, or by sending payment with your student to the attention of your G2M Coordinator.



Payment enclosed with registration. Please make checks payable to *Wausau School District* to the attention of your G2M Coordinator.

Payment made previously or online

Request waiver of fee at this time

Registration Forms: Please fill out completely and return by **Sep 30, 2022**