

**MISSION:** Cristo Rey Jesuit High school provides a Catholic, college preparatory education and professional work experience to students from Spanish-speaking families with limited financial means.

**VISION:** The reason for the school's existence is to advance the human and intellectual capacities, as well as the religious and cultural heritage, of the immigrant families it serves. Through its Corporate Work Study Program, faith-based college preparatory education, and Spanish heritage language curriculum, the goal is to prepare students to succeed in college and to assume leadership roles in the civic, religious, business and cultural life of our city and nation.

As committed alumni of a Jesuit high school, graduates become men and women for others who are open to growth, religious, intellectually competent, loving, committed to justice, and work experienced.



## CURRICULUM & BILITERACY

All students take a rigorous college preparatory curriculum rooted in the liberal arts. Coursework requires four years of English, Math, and Religion, and three years of Science and Social Science. Cristo Rey does not rank students.

All of this takes place within our distinct dual language program, which promotes proficiency in both Spanish and English. The program requires that 30% of classes be taught entirely in Spanish; the remaining 70% of coursework is taught in English. In addition to AP English for seniors, students might also take British Literature. In addition to AP Spanish for seniors, students might also take Spanish Literature 4. Of the current senior class, 65 will be awarded a Global Seal of Bilingualism.

All students are required to take the AP Spanish Literature and Culture exam. In the 2020-21 school year, 86% of junior test-takers passed the AP Spanish Literature and Culture exam with a score of 3 or better.

## CORPORATE WORK STUDY PROGRAM (CWSP)

The CWSP provides students with professional work experience at one of more than 100 partner organizations, while allowing students to earn a majority of the cost of their education at Cristo Rey. Every student works five, eight-hour days per month without missing any scheduled classes. Students develop workforce skills, connect with professional mentors, and explore possible career paths. A longer school day and school year allow for this integral learning experience.

## ADMISSION REQUIREMENTS

Cristo Rey takes a holistic approach to admissions, considering: past academic performance, motivation, low-income verification, discipline record, employability, and Spanish language proficiency. In 2022, 272 applications were submitted for a freshman class of 151 with an average income of \$38,199 (family of four).

**Founded:** 1996  
**Enrollment:** 536

**Accreditation**  
AdvanceEd  
Illinois State Board of Education

**Membership**  
Jesuit Schools Network  
Cristo Rey Network  
Illinois High School Association  
Chicago Prep Conference

### School Administration

Antonio Ortiz, President  
aortiz@crstorey.net / (773) 890-6822

Mayra Gradilla, Interim Principal  
mgradilla@crstorey.net / (773) 890-6836

Elizabeth Torres, Associate Principal, Academics  
etorres@crstorey.net / (773) 890-6835

Maricruz Maynez, Registrar  
mmaynez@crstorey.net / (773) 890-6823

### College Counseling Staff

Reina Garcia, Director of College Counseling  
reinagarcia@crstorey.net / (773) 890-6839

Daisy Castillo, M.Ed., Manager of Alumni Support  
dcastillo@crstorey.net / (773) 890-6819

Joanna Mena, College Counselor  
jmena@crstorey.net / (773) 890-7154

Isabel Hernández, College Counselor  
ihernandez@crstorey.net / (773) 890-6830

## ACTIVITIES

Students participate in 19 varsity and junior varsity sports teams, through 11 different sports, and close to 30 different student clubs and activities. More than 78% of the student body participates in at least one sport or extra-curricular activity. Through athletics and activities, students develop leadership skills, work cooperatively with others, and grow emotionally, spiritually, and intellectually outside the classroom.

## FAITH & SERVICE LEARNING

As the only Catholic high school in Chicago serving exclusively Spanish-speaking students, Cristo Rey serves as a bridge to faith by providing opportunities to deepen their relationship with God in the context of a Christian community. In addition to learning about faith in religion class, students participate in retreats, liturgies, and other programs. Students take on many leadership roles as ministers to one another as retreat leaders, lectors, Eucharistic Ministers, and prayer leaders. Freshmen, sophomores, and juniors are required to complete a class-based service project. Seniors are required to complete a minimum of 15 hours at an approved non-profit organization of their choice. Additional service opportunities are available including local, national, and international summer enrichment programs.

## SCHOOL CURRICULUM

Department	Freshman Year	Sophomore Year	Junior Year	Senior Year
<b>Corporate Work Study Program</b>	CWSP 1	CWSP 2	CWSP 3	CWSP 4
<b>English</b>	English 1	English 2	American Literature	AP English Literature and Composition British Literature
<b>Fine Arts</b>	Fine Arts I: Intro to Music			Fine Arts 4: Art History
<b>Mathematics</b>	(H) Algebra I	Geometry (H) Algebra II / Geometry	Algebra II / Trigonometry (H) Pre-Calculus	AP Statistics AP Calculus Pre-Calculus Statistics
<b>Religion</b>	Religion 1: Catholic Christianity *	Religion 2: Hebrew Scripture/ Sacraments *	Religion 3: New Testament/Church History	Ethics and the Christian Life
<b>Science</b>	(H) Biology Health Physical Education	(H) Physics	(H) Chemistry	Physical Education
<b>Social Studies</b>		World History*	U.S. History History of the Americas*	Civics AP United States Government and Politics
<b>Spanish</b>	Spanish for Heritage Speakers I: Introductory Grammar and Literature *	Spanish II: Advanced Spanish Literature *	Advanced Spanish 3: History of the Americas *	Advanced Spanish Literature & Culture * AP Spanish Literature & Culture *

The following electives are offered to Seniors only: Finance, Voices of Latin America \*, Broadcast Journalism \*, Advanced Biology, Chicano Studies, College Seminar

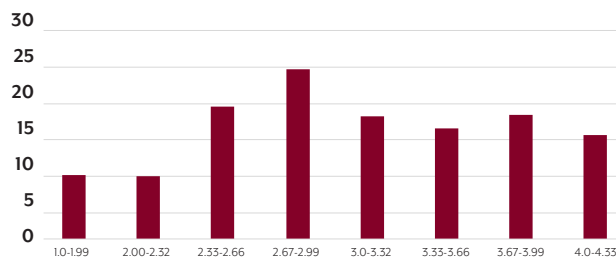
\* = Courses taught in Spanish as a part of the dual language program (H) = Honors option available

## CWSP FRESHMAN CURRICULUM

The mission of the Corporate Work Study Program is to provide all students with four years of professional work experience. Currently, about 2/3 of freshmen are not deployed to work as job recruitment was impacted by the pandemic. Those freshmen instead are engaging with external partners to develop technical and interpersonal skills ahead of their future work placement and give them meaningful education and skills for their eventual career. Cristo Rey is partnering with Code Nation, NextWave, Economic Awareness Council to provide courses including: Leadership & Career, Executive Functioning, Technology, Business Problem Solving, Khan Academy, and Socio-Emotional Learning.

## GRADING PROCEDURES

Weighted GPA Distribution - Class of 2023  
120 Students - Six Semester Grades



Cristo Rey Jesuit High School utilizes a 4.0 grading scale: A=4.0; A-=3.67; B+=3.33; B=3.0; B-=2.67; C+=2.33; C=2.0; C-=1.67; D+=1.33; D=1.0; F=0.0. All grades for AP and Honors courses are multiplied by 1.25.

For students that faced severe hardship due to the COVID-19 pandemic, Cristo Rey offered courses as Pass/Fail. Incompletes were issued if the student had a finite amount of work to complete in order to earn a passing grade.

## GRADUATION REQUIREMENTS

A minimum of 28.5 credits are required for graduation, including:

**Corporate Work Study Program:** 1 Credit/year

**Electives:** 1.5 Credits

**English:** 1 Credit/year

**Fine Arts:** .5 Credit

**Mathematics:** 1 Credit/year

**Physical Education:** .5 Credit

**Religion:** 1 Credit/year

**Science:** 3 Credits

**Social Studies:** 3 Credits

**Spanish:** 1 Credit/year

100% of Cristo Rey graduates gained acceptance to at least one college or university

## COLLEGES AND UNIVERSITIES THAT OFFERED ADMISSION TO THE CLASS OF 2022

Albion College  
Arrupe College of Loyola University Chicago  
Augustana College  
Aurora University  
Beloit College  
Benedict College  
Blackburn College  
Boston University  
Bradley University  
Butler University  
California Lutheran University  
Carroll University  
Carthage College  
Case Western Reserve University  
Coe College  
College of DuPage  
College of Saint Benedict  
Columbia College Chicago  
Concordia University-Chicago  
Denison University  
DePaul University  
DePauw University  
Dominican University  
Eastern Illinois University  
Elmhurst University  
Fairfield University  
Fordham University  
Fox College  
Georgetown University  
Governors State University  
Greenville University  
Harold Washington College  
Hawaii Pacific University  
Illinois College  
Illinois Institute of Technology  
Illinois State University  
Indiana State University  
Indiana Tech

Iowa State University  
Johnson & Wales University - Providence  
Judson University  
Kalamazoo College  
Kennedy-King College  
Lake Forest College  
Lawrence University  
Lesley University  
Lewis University  
Lincoln College  
Loras College  
Lourdes University  
Loyola Marymount University  
Loyola University Chicago  
Malcolm X College  
Marquette University  
Miami University, Oxford  
Michigan State University  
Middlebury College  
Monmouth College  
Morton College  
Mount Mary University  
National Louis University  
North Central College  
North Park University  
Northeastern Illinois University  
Northern Illinois University  
Oakton Community College  
Olivet College  
Olivet Nazarene University  
Pace University, New York City Campus  
Pennsylvania State University - Penn State  
Main Campus  
Purdue University Fort Wayne  
Purdue University - Main Campus  
Regis University  
Richard J. Daley College  
Roosevelt University

Saint Johns University  
Saint Louis University  
Saint Mary's College  
Saint Mary's University of Minnesota  
Saint Michael's College  
Saint Xavier University  
Santa Clara University  
Savannah College of Art & Design - SCAD  
Seattle University  
Southern Illinois University - Carbondale  
Southern Illinois University - Edwardsville  
St. Olaf College  
Stonehill College  
The College of Saint Rose  
The College of Wooster  
The Posse Foundation  
The University of Texas at Dallas  
Trinity Christian College  
Trinity University  
Triton College  
University of Dayton  
University of Denver  
University of Illinois at Springfield  
University of Illinois at Urbana-Champaign  
University of Illinois Chicago  
University of Massachusetts - Boston  
University of Michigan - Ann Arbor  
University of Oregon  
University of San Francisco  
University of St. Thomas (MN)  
University of the District of Columbia  
University of Wisconsin - Madison  
University of Wisconsin - Milwaukee  
Valparaiso University  
Western Illinois University  
Western Michigan University  
Xavier University

## CORPORATE WORK STUDY INDUSTRIES

Through the Corporate Work Study Program, CWSP, students earn a majority of their tuition, making the dream of a safe, affordable, quality college prep education a reality. Students gain valuable work experience and cultivate a strong network of professional relationships that will benefit them for a lifetime. Students work at partner companies in the following industries:

- **Architecture, Construction, Engineering & Design**
- **Banking**
- **Consumer Products**
- **Creative & Events**
- **Education & Museum**
- **Financial & Business Services**
- **Offices Of Government**
- **Health Care**
- **Hospitality**
- **Insurance**
- **Law**
- **Civic, Member, Community & Faith-Based, and Non-Profit Organizations**
- **Real Estate**
- **Shipping, Logistics & Distribution**
- **Technology & Energy**

*For a full list of our Corporate Work Study program partners, please visit [www.cristorey.net](http://www.cristorey.net)*

Our graduates have succeeded in post-secondary education at rates exceeding their peers. For the class of 2016, 63% have earned a degree in 6 years or less - 55% have a 4-year degree and 8% have a 2-year degree. In comparison, the most recent national data from the Pew Research Center finds that just 35% of Hispanics ages 18 to 24 are enrolled in two- or four-year post-secondary institutions and, among Hispanics ages 25 to 29, just 15% have earned a bachelor's degree.

