



Town Hall Meeting

FALL 2020 SAFE RETURN

Recovery, Redesign, Return

July 15, 2020

Fall 2020 Safe Return Planning

Your input is important!

www.smcps.org/streaming

Ask questions!

Timeline

Parent/Staff
Surveys

Stakeholder
Groups

Family
Communication

School
Year
Begins

June 2020

July 2020

August 2020

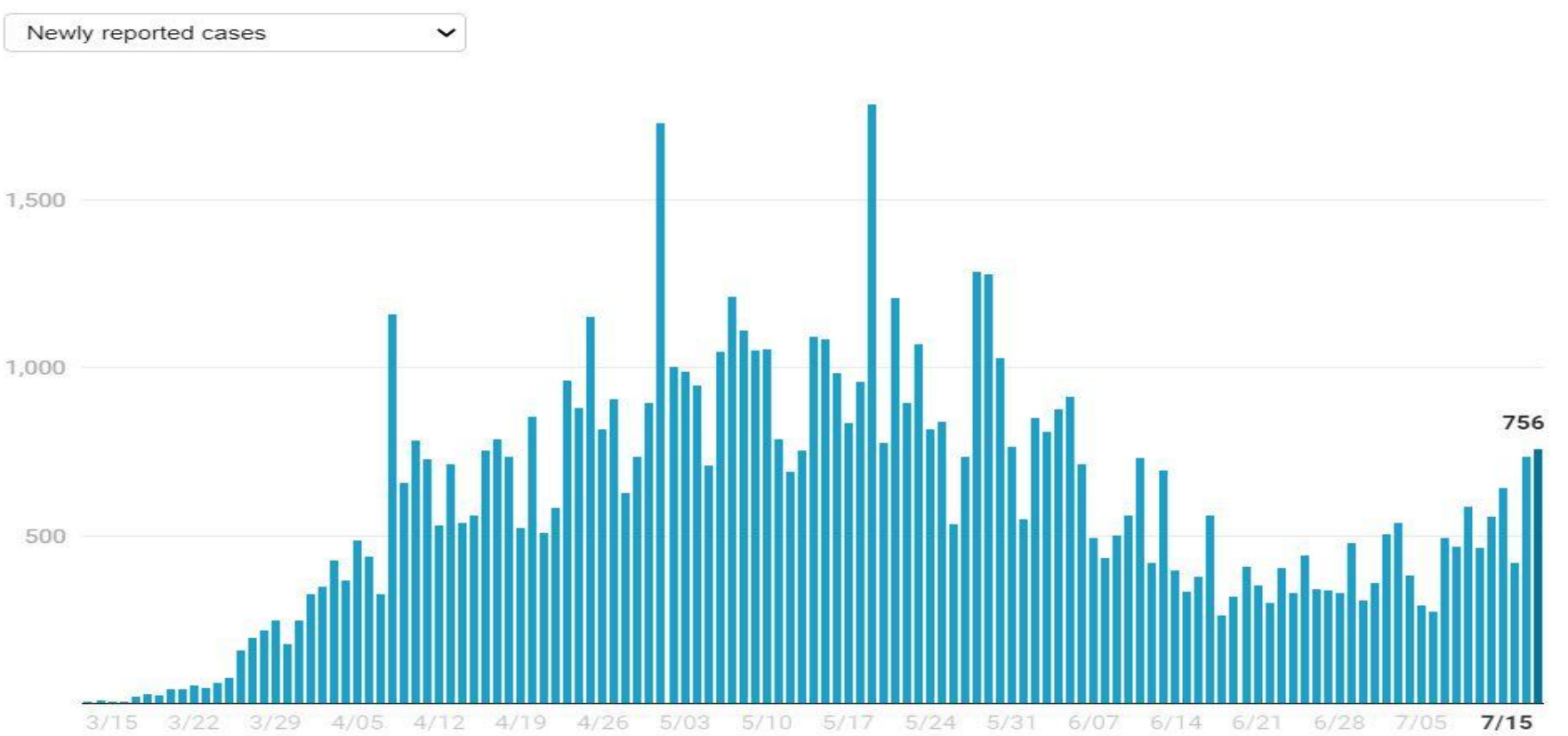
Review of Spring
2020

Town Hall
Meetings

Board
Presentation

Final Recovery
Plan

Daily Reported COVID Cases in Maryland



Guiding Principles

Health and Safety

Equity and Access

Communication and Engagement

Engaging and High Quality Instruction

Technology and Resource Support

Meeting the Diverse Needs of Students

STAGE 2 REQUIREMENTS FOR OPENING SCHOOLS

Strategies for Reopening Process

In Stage 2 of Governor Hogan's Roadmap for Recovery, schools and school programs will begin the reopening process. The decision on the reopening of schools is a decision of the State Superintendent in concert with the Governor, the State Board of Education, the MD Department of Health, and other MD agencies and personnel. Upon a decision, Dr. Karen Salmon, State Superintendent of Schools, will announce the reopening and will communicate directly with the Local School Superintendents and the public. In preparation of reopening, the Maryland Together: Maryland's Recovery Plan for Education will serve as a roadmap for the local school systems in developing Local Recovery Plans. Requirements are enumerated below. Each school system must include these requirements in their reopening plan. The requirements for opening schools during Stage 3 will be determined.



MSDE Decision Matrix June 23, 2020

Reopening Maryland Schools K-12 Decision Matrix

STEP ONE: The Governor's Office, in coordination with members of the coronavirus recovery team and experts at the Maryland Department of Health, monitor key health metrics and identify the appropriate stage within Maryland's *Roadmap to Recovery*. The State Superintendent of Schools, in consultation with the State Board of Education, subsequently determines the operational status of schools within each stage.

Impacts on School System

When the State is in Stage 1: All school activities are to be conducted online and through distance learning platforms.	When the State is in Stage 2: Some in-person school activities may commence, in accordance with the Governor's gating and social distancing measures.
---	---

STEP TWO: When the State is in Stage 2, each local school system shall determine the appropriate reopening strategy in accordance with the *Requirements for Opening Schools* as outlined in *Maryland's Recovery Plan for Education*.

- Develop and submit local education plans with a plan for reopening schools
- Incorporate equity as a component in the local recovery plan
- Establish local education recovery stakeholder groups
- Identify learning gaps and instructional placement of students
- Follow and maintain curricular frameworks and MD CEs
- Adhere to components of IDEA, Section 504 of the Rehabilitation Act, and other federal laws
- Adopt and follow health procedures outlined by the MDH
- Ensure safe transportation for all students
- Develop system for tracking attendance

When the State is in Stage 1:
All school activities are to be conducted online and through distance learning platforms.

When the State is in Stage 2:
Some in-person school activities may commence, in accordance with the Governor's gating and social distancing measures.

When the State is in Stage 3:
In-person school activities may fully resume, and schools can begin normal operations.

STEP THREE: Local school systems make determinations regarding which groups of students and staff will be able to re-enter buildings. Specific schedules, calendar modifications, and delivery of instruction are at the discretion of the local school system. School systems can be more restrictive than the requirements outlined in the State Recovery Plan, and the health and safety measures outlined by the Governor and MDH depending on conditions in their locality.

Impacts on School System Decisions

All decisions prior to step three can be reevaluated depending on emerging data and trends at the State level

MSDE Decision Matrix July 8, 2020

Reopening Maryland Schools K-12 Decision Matrix

STEP ONE: The Governor's Office, in coordination with members of the coronavirus recovery team and experts at the Maryland Department of Health, monitor key health metrics and identify the appropriate stage within Maryland's *Roadmap to Recovery*. The State Superintendent of Schools, in consultation with the State Board of Education, subsequently determines the operational requirements for each stage.

Impacts on School System

When the State is in Stage 1:

All school activities are to be conducted online and through distance learning platforms.

When the State is in Stage 2:

Some in-person school activities may commence, in accordance with the Governor's gating and social distancing measures.

STEP TWO: When the State is in Stage 2, each local school system shall develop and submit local education plans with a plan for COVID-19 recovery. The local education plans shall be consistent with the *Requirements for Opening Schools* as outlined in Maryland's *Recovery Plan for Education*.

- Develop and submit local education plans with a plan for COVID-19 recovery.
- Incorporate equity as a component in the local recovery plan.
- Establish local education recovery stakeholder groups.
- Identify learning gaps and instructional placement of students.
- Follow and maintain curricular frameworks and MD College-Ready standards.
- Adhere to components of IDEA, Section 504 of the Rehabilitation Act, and other federal and state laws.
- Adopt and follow health procedures outlined by the MSDE, MDH, and local health departments.
- Ensure safe transportation for all students.
- Develop system for tracking attendance.

STEP THREE: Local school systems make determinations regarding which groups of students and staff will be able to re-enter buildings. Specific schedules, calendar modifications, and delivery of instruction are at the discretion of the local school system. Depending on conditions in their locality, school systems may be more restrictive than the requirements outlined in the State Recovery Plan, and the health and safety measures outlined by the Governor and MDH.

Impacts on School System Decisions

When the State is in Stage 1:

All school activities are to be conducted online and through distance learning platforms.

When the State is in Stage 2:

Some in-person school activities may commence, in accordance with the Governor's gating and social distancing measures.

When the State is in Stage 3:

In-person activities may fully resume, and schools can begin normal operations consistent with additional safety measures.

New language "consistent with additional safety measures"

All decisions prior to step three can be reevaluated depending on emerging data and trends at the State level

Health and Safety

SMC Health Department COVID data webpage

Age

- 0-9: 24
- 10-19: 51
- 20-29: 92
- 30-39: 81
- 40-49: 91
- 50-59: 90
- 60-69: 85
- 70-79: 101
- 80-89: 85
- 90+: 40
- Data unavailable/not identified: 1

ST. MARY'S COUNTY HEALTH DEPARTMENT

HOME ABOUT CONTACT US INDIVIDUALS COMMUNITY HEALTH CARE PROVIDERS RECORDS, FORMS & PERMITS NEWS ROOM
OFFICE STATUS: CLOSED TO WALK-IN CLIENTS COVID-19 UPDATES & INFORMATION LOCAL COVID-19 DATA COVID-19 TESTING COVID-19 TRAVEL

Select Language

Search this website ... Search

COVID-19 Data

Case Information - St. Mary's County Residents

Page will be updated daily by noon.

As of 7-14-20:
Negative Test Results: 9467*
Confirmed Cases: 741**

Data Breakdown for Confirmed Cases

Gender

- Male: 415
- Female: 324
- Data unavailable/not identified: 2

Race/Ethnicity

- African American/Black: 273
- Caucasian/White: 365
- Hispanic/Latino: 59
- Other or not identified: 44

Age

- 0-9: 24
- 10-19: 51
- 20-29: 92
- 30-39: 81
- 40-49: 91
- 50-59: 90
- 60-69: 85
- 70-79: 101
- 80-89: 85
- 90+: 40
- Data unavailable/not identified: 1

CORONAVIRUS INFORMATION (COVID-19)

Coronavirus Disease 2019 (COVID-19)

Centers for Disease Control and Prevention

HOW DO I?

- Get —
- Apply —
- Report —
- Find —

NEWS RELEASES

- Local Public Health Advisory: Travel from States with Significant Community Spread of COVID-19
- Holiday Closures - COVID-19 Community Hotline & Testing Sites
- Joint Resolution Signed to Advance Equity in Public Safety, Education and Health

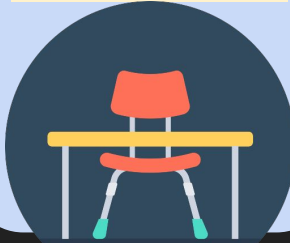
Recovery Planning Teams

Over 90 members

- Parents
- Students
- Teachers
- Education Association Members (EASMC/SMASA)
- Administrators
- Central Office Staff
- SMC Health Department

Options for the Fall

Hybrid Classroom Instruction



Blended Learning
A/B Schedule

- 2 days in person at school
- 3 days online

Completely Virtual Learning



Online/Virtual

- Majority self-paced asynchronous structure
- Some real-time synchronous elements

Phasing into a Hybrid Schedule

Phased In
Schedules



Step

1

Begin with online learning with consideration for students receiving specialized services

Step

2

Sequence bringing in grade-level groups starting with Kindergarten, 6th grade, 9th grade

Step

3

Monitor and add additional grades until all levels are back pre K-12

In the School /At the Workplace



Hand Washing



Hand Sanitizer



Face Coverings



Physical Distancing



Cleaning



Training



MARYLAND STRONG

ROADMAP TO RECOVERY

RELEASED APRIL 24, 2020

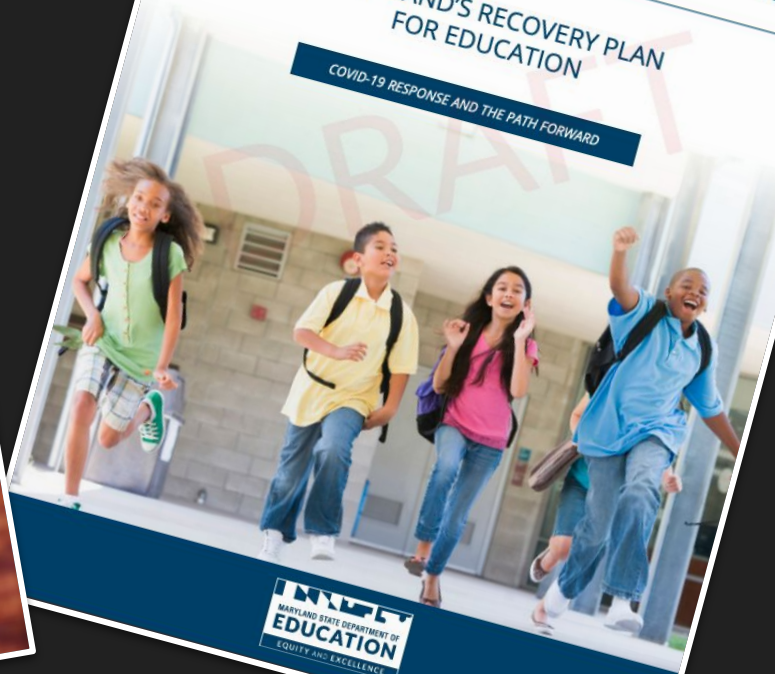
GOVERNOR
LARRY HOGAN

JUNE 2020

MARYLAND TOGETHER

MARYLAND'S RECOVERY PLAN FOR EDUCATION

COVID-19 RESPONSE AND THE PATH FORWARD



MDDE
MARYLAND STATE DEPARTMENT OF
EDUCATION
EQUITY AND EXCELLENCE

SMCPS Safe Return Plan for Education

Four Primary Pillars

Teaching and Learning

Services for Students

Supporting Services

Organization and System Support

Equity

Staff Development

Stakeholder Input

Organizational Planning

Communication and Engagement

- Town Hall and Board Meeting presentations
- Letter for Families
- Technology Survey

Scheduling

- Schoology
- Virtual
- Options and Models - A/B
- Choices

Staffing Support

Instruction

Courses are being built in Schoology ensuring content standards, as well as identification and mitigation of instructional gaps are addressed.

Schoology will allow SMCPS to provide instruction to all of our students in all courses normally offered.

Grade recordation practices for teachers/students will “return to normal.”

At this time, materials such as textbooks and novels, will be inventoried, issued to students, and able to be taken to and from home/school.

There is a Parent and Student Schoology Resources Google Site currently under development.

Student Services

Specialized Instruction/IEP/504

- Student interventions will be provided using a virtual platform for students not in school
- Schoology platform will allow opportunity to meet IEP services through virtual face-to-face instruction for those not in school
- Diagnostic assessments to begin SY21 to identify specific instructional needs due to school closure

Attendance

- Attendance will be recorded for in school and virtual environments

Student Services (Continued)

Health Services

- Health room management of student care
- Health education: handwashing, face coverings, maintaining healthy school environment
- Collaboration with St. Mary's County Health Department to ensure best practice

Mental Health Services

- Access to social-emotional learning lessons
- Access to mental health and counseling support for school and virtual environments

Supporting Services

Transportation

- Reviewing seating capacity and routing options
- Reviewing impacts on daily school bus arrivals and afternoon departures
- Reviewing bus driver, bus attendant, and student expectations
- Reviewing bus cleaning protocol

Clean and Healthy

- Establish a proactive approach to cleaning and maintaining safe facilities based on recommended cleaning protocols (i.e., disinfection of high touch surfaces, air and water quality)
- Establish response plans to address potential illness in students and staff

Supporting Services (Continued)

Food Services

- Considering a pre-ordering system that would allow ordering meals in advance
- Hoping to provide multiple days of meals if students are not in school every day. Pre-ordering options may be available for in-school and/or pick-up at the home school location.
- Food distribution sites (sites to be determined) will be established if SMCPS initiates a fully virtual learning environment

Athletics and Extracurricular activities

- Effective July 13th: Outdoor only summer conditioning activities with safeguards in place
- Developing multiple scenarios for Athletics and Extracurricular Activities in future phases including but not limited to competition schedules, seasonal start dates, compressed seasons, modified seasonal play, and limitations on gatherings

Next Steps

Board of Education Meeting

- July 22, 2020 at 9:00 a.m.

Town Hall Presentation

- July 29, 2020 at 4:00 p.m.

Parent Letter

Updates to SMCPS Website

Fall 2020 Safe Return Planning

Your input is important!

www.smcps.org/streaming

Ask questions!

Questions submitted so far...

Will a fully virtual option be available?

Will masks be required if a hybrid model is implemented and what will be the consequence for students refusing to wear one?

Will there be fall sports / extracurricular activities ?

What will happen when a student or staff member test positive for COVID?



Town Hall Meeting

FALL 2020 SAFE RETURN

Recovery, Redesign, Return