

Facilities Assessment & Campus Master Plan



FALMOUTH NAVIGATORS

Navigating Creative Pathways to Courageous, Compassionate, and Fulfilling Lives



OAK POINT
ASSOCIATES

architecture
engineering
planning

who we are

Oak Point Associates by the numbers

- 2 offices
- 72 team members
- 11 registered architects
- 21 professional engineers
- 22 LEED accredited professionals
- 43 years in business



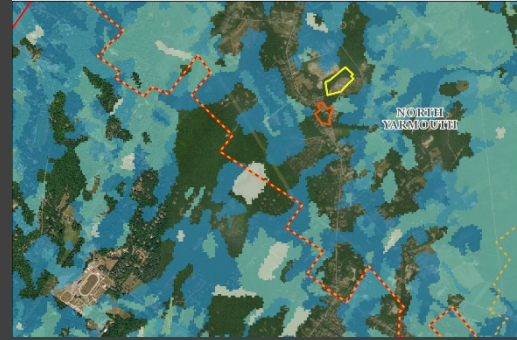
what we do



ARCHITECTURE



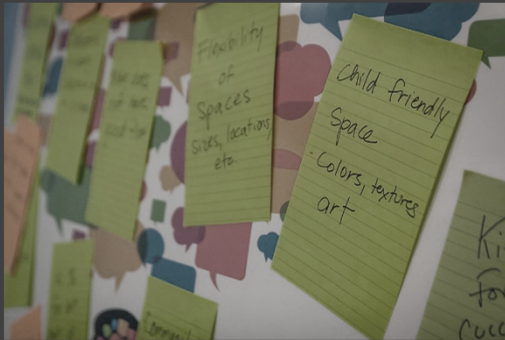
INTERIOR DESIGN



SITE EVALUATION



EDUCATIONAL PLANNING



CLIENT ENGAGEMENT



FIRE PROTECTION



SUSTAINABLE DESIGN



LANDSCAPE ARCHITECTURE



CIVIL ENGINEERING



ELECTRICAL ENGINEERING



MECHANICAL ENGINEERING



STRUCTURAL ENGINEERING

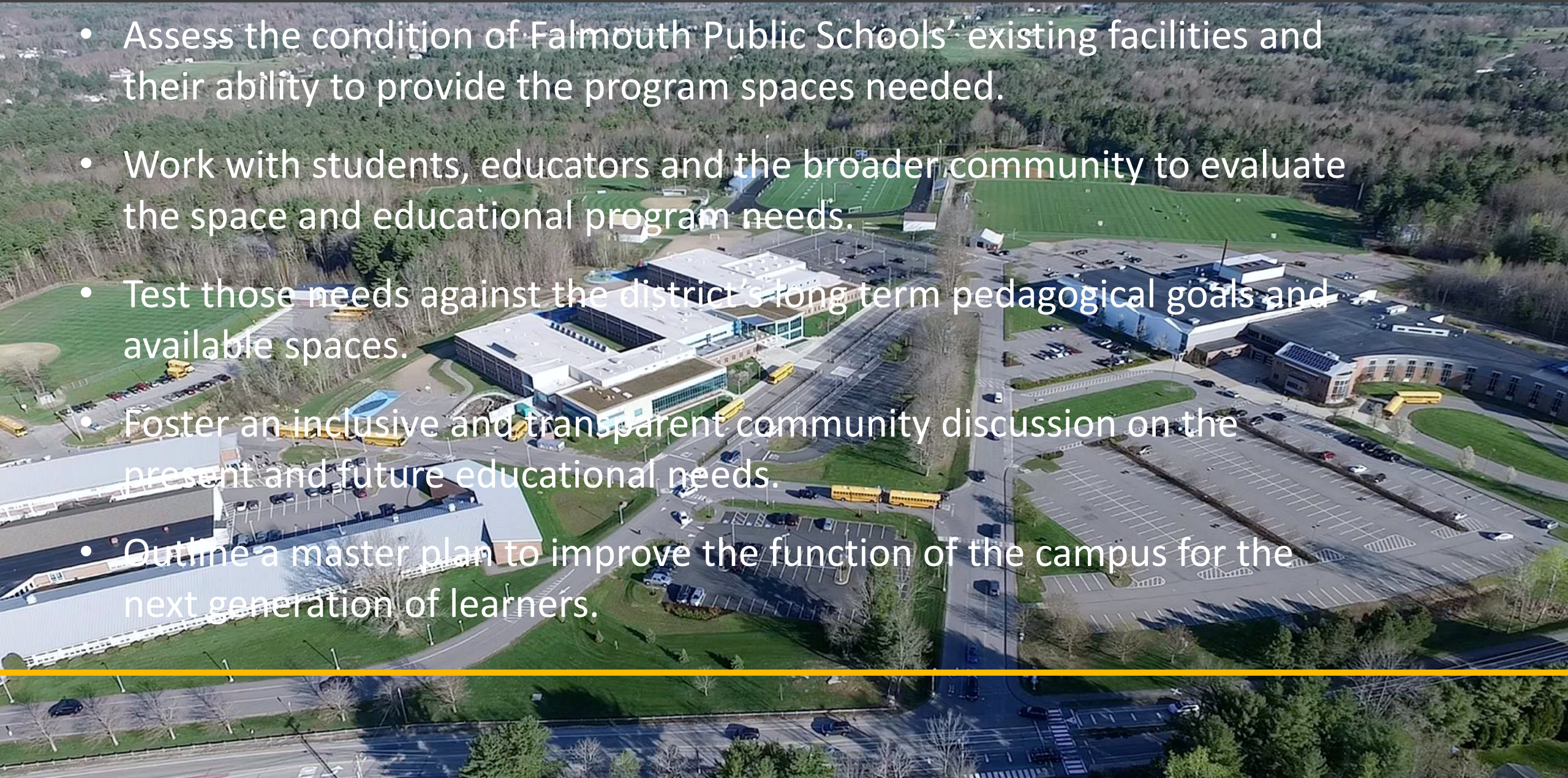
what is a master plan?

- Inventories current usage of all buildings and site facilities.
- Evaluates highest and best use of entire property (developed and undeveloped).
- Provides an implementation plan for optimizing the use of your buildings and site in a way that will meet your current and projected future needs.



project tasks

- Assess the condition of Falmouth Public Schools' existing facilities and their ability to provide the program spaces needed.
- Work with students, educators and the broader community to evaluate the space and educational program needs.
- Test those needs against the district's long term pedagogical goals and available spaces.
- Foster an inclusive and transparent community discussion on the present and future educational needs.
- Outline a master plan to improve the function of the campus for the next generation of learners.



strategic plan

Priority Area I: Campus Facilities: Falmouth Schools will develop and implement a campus facilities master plan that supports our Guiding Principles.

OBJECTIVES	
NORTH: A cohesive, dynamic and responsive K-12 Learning Pathway, driven by student voice	<ul style="list-style-type: none">● Learning spaces (inside and outside) are ample and flexible, able to foster disciplinary, interdisciplinary, and experiential learning in personalized and collaborative contexts, for all learners.● Facilities provide for varied innovative learning interests, ranging from STEM to Performance, from Athletics to Gardens, from Maker Space to Media Literacy, from Seminar to Virtual Collaborations, from Special Education to Wellness etc.
SOUTH: Ongoing, collaborative, Professional Learning structures that strengthen & improve practice	<ul style="list-style-type: none">● Spaces support collaborative work and professional learning in small and larger groups● Professionals have appropriate spaces in which to do their work● Resources, materials, and equipment storage spaces support the work of professionals and the needs of students
EAST: A climate and culture that is safe, equitable, and fosters wellness.	<ul style="list-style-type: none">● Appropriate, welcoming spaces are created for play and informal gatherings of all staff, students, and community members● Campus design and systems optimize aesthetics and mental-wellbeing, security, accessibility, sustainability, efficiency
WEST: Community Partnerships that foster authentic learning and both local and global citizenship	<ul style="list-style-type: none">● The campus master planning process uses data, input, and feedback from all stakeholders (students, staff, community, etc.) throughout the process.● The campus design and offerings are responsive to and provide benefit to the broader community● The process and determinations account for the importance of both long-term vision and fiscal responsibility

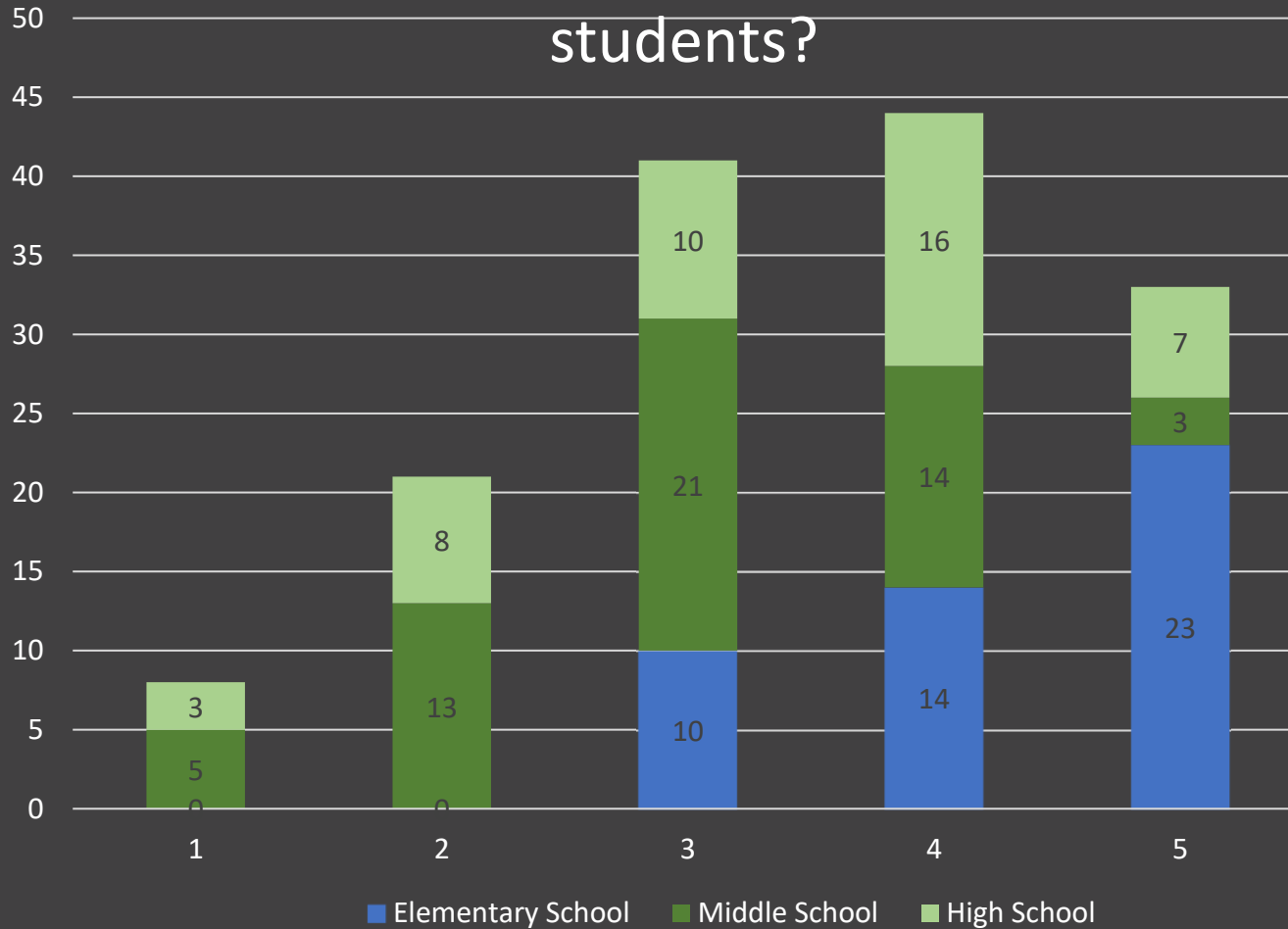
This project includes extensive community engagement including:

- ✓ **Online surveys** are created to gather information from specific groups
- ✓ Interviews and discussions with **Staff and Students** for a complete understanding of the education needs
- **Community Charrettes and Public Forums** to engage the full community at large
- Presentations to the **School Board and Building Committee**



student polls

How welcoming is your school building design and layout for students?



ES Comments:

Welcoming: "Artwork, modern design and colors, natural light, break out spaces and teachers"

Need: "Student hang out space, bigger art room, large soccer goals"

MS Comments:

Welcoming: "Outdoor courtyard, art/posters, open lobby, familiar, inclusive restrooms, natural light and teachers"

Need: "Auditorium, pool, weight room, better playground, renovate/new because building is old, worn and creepy"

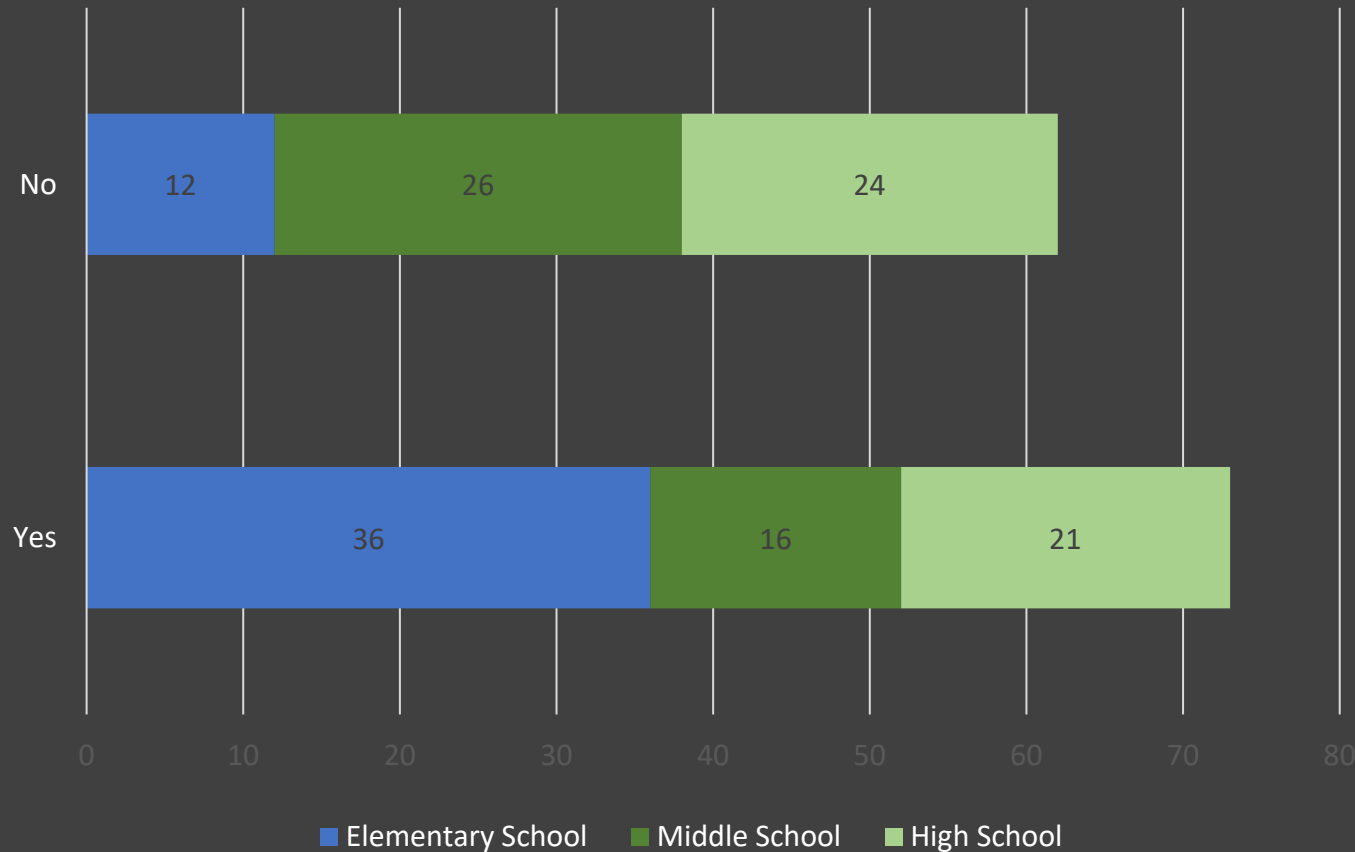
HS Comments:

Welcoming: "Open commons to work and socialize with friends, easy to navigate, two gyms and gardens"

Need: "Larger lobby, space, quieter small group rooms, more eating space, natural light, AC, updated colors/design and better wayfinding."

student polls

Does the design of your school make you proud? Does it feel like it is yours?



ES Comments:

Yes: "Modern, welcoming, looks cool, colorful and playful, big, bright and clean"

No: "Dead plants, no AC and not big enough"

MS Comments:

Yes: "Welcoming, nice staff, homey, know where to go after a while"

No: "Old, outdated compared to other schools, confusing layout and gross"

HS Comments:

Yes: "Modern, school colors and pride, unique, clean, easy to navigate, makes me happy"

No: "Outdated, not modern, basic and not unique, building/classrooms too small and dark"

staff polls

ES Comments:

Welcoming: "Glass and natural light, entryway, library, student art displays"

Lacking: "Sterile, too big and separated, air flow and staff collaboration"

Like best: "Windows, pretty design, spacious and open, staff, new and fresh"

Like least: "Too separated and big, out of space, lack of teacher and sped space, no AC"

MS Comments:

Welcoming: "Courtyard, trees, front entrance, quirky, art, not much"

Lacking: "Light, small group and community spaces, connection, accessibility, kid hang out spaces, non-gender toilets, modern layout"

Like best: "Courtyard, science room, spacious, central library, people, character"

Like least: "Too hot, layout, dark, bathrooms, spread out, run down, lack of equity, narrow hallways "

HS Comments:

Welcoming: "Entry, theater, commons, atmosphere, not much"

Lacking: "Front entry, collaboration areas, light, traffic flow, classrooms, larger cafeteria & auditorium, staff space, color"

Like best: "Open, easy sightlines, student display, clean, people, campus, library, auditorium, light, grounds"

Like least: "Classroom sizes, no staff areas/toilets, windows, lack of space, poor ventilation, loud hallways, no character, science labs, portables"

breakout groups

architecture and interiors



environmental/mechanical



outdoor learning, playgrounds and fields



sustainability



facilitator





OAK POINT
ASSOCIATES

architecture
engineering
planning