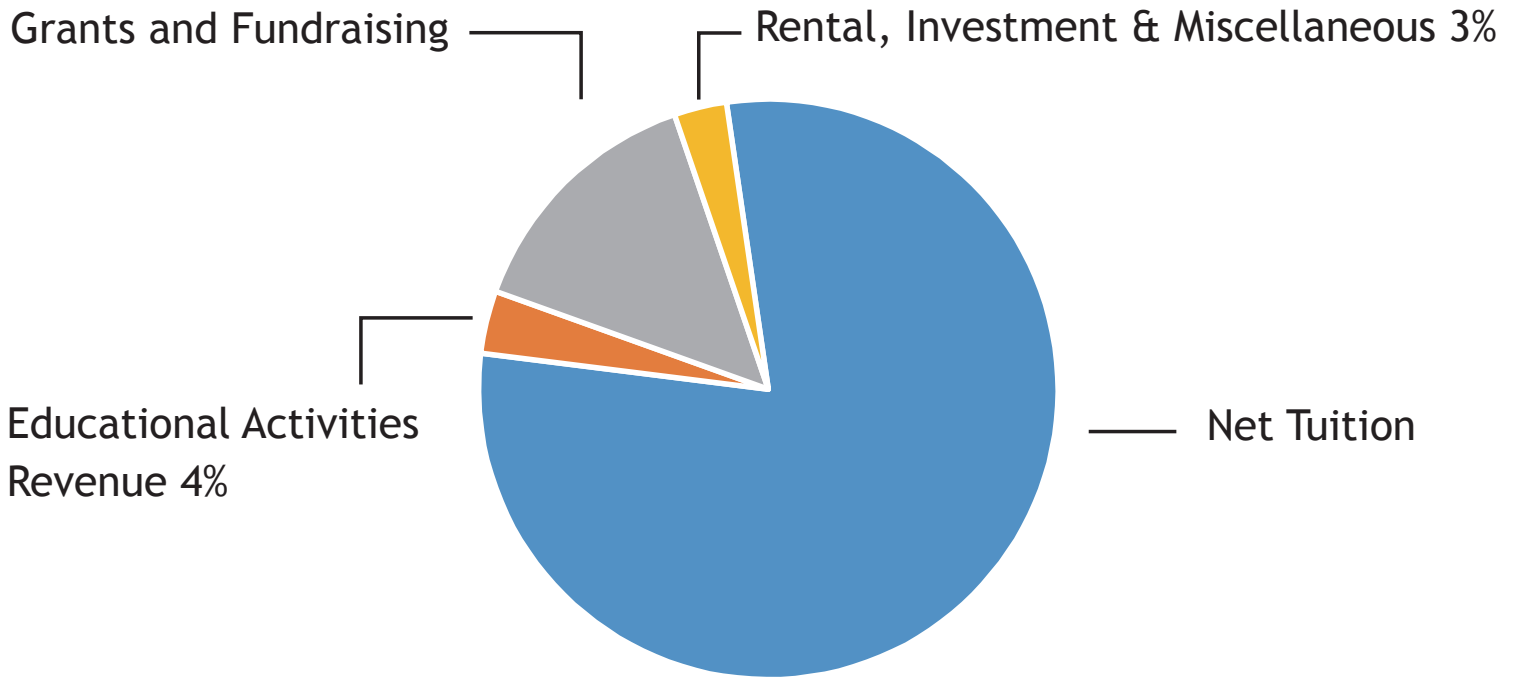
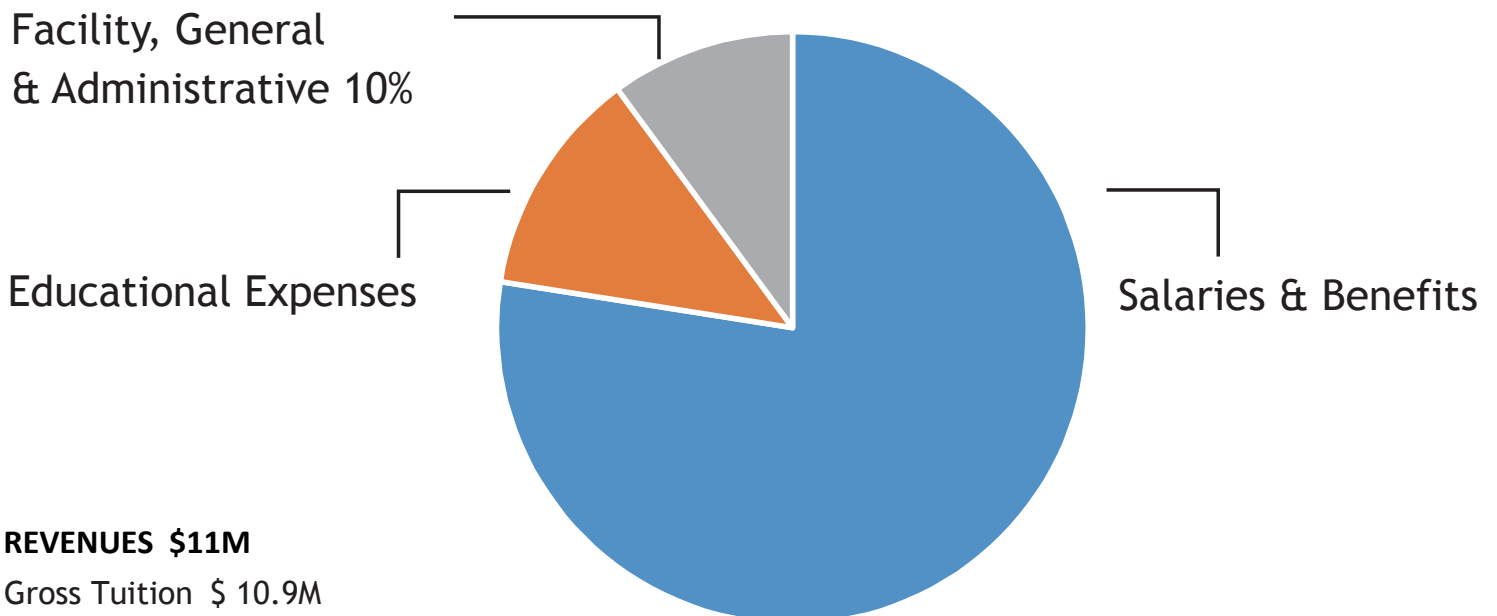


# Fiscal Year 2021-2022

## Operating Revenue



## Operating Expenses



### REVENUES \$11M

Gross Tuition \$ 10.9M

Tuition Assistance \$ (2.1M)

- Net Tuition \$ 8.8M
- Grants and Fundraising \$ 1.6M
- Educational Activities Revenue \$ 383K
- Rental, Investment & Miscellaneous \$ 323K

### EXPENSES \$11M

- Salaries & Benefits \$ 8.6M
- Educational Expenses \$ 1.4M
- Facility, General & Administrative \$ 1.1M