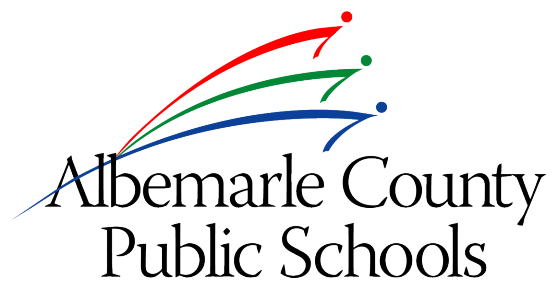




# **2022-23** SCHOOL YEAR CALENDAR





# ABOUT THIS CALENDAR

The Albemarle County Public Schools 2022-23 School Year Calendar celebrates the creativity and talents of our students. The art featured in this calendar\* was created by Albemarle County students during the previous school year, and at least one original piece of artwork from every school is included.

All of this artwork, as well as additional pieces that were shown in our 2021-22 Student Art Show are available in a gallery on our Fine Arts web page. Last year, the Student Art Show was displayed as a projection-mapped show on the side of the CODE building in Downtown Charlottesville. A video of this show can also be viewed on our Fine Arts web page.

For more information about our Fine Arts programming in Albemarle County Public Schools, please speak with an art teacher at your child's school or visit [k12albemarle.org/FineArts](http://k12albemarle.org/FineArts).



In an effort to make all of our communications more accessible to everyone in our community, you may see a number of QR codes scattered throughout the informational sections of this calendar. By scanning these codes with the camera of a smart phone, you are able to easily access web pages referenced in this publication, which can be translated to six different languages as well as browsed with accessibility assistants like screen readers.

*\*Photographs of artwork featured in this calendar may have been cropped to fit available space and/or printing dimensions.*

**COVER ARTWORK**  
**TEYLAN BECKER / MONTICELLO**

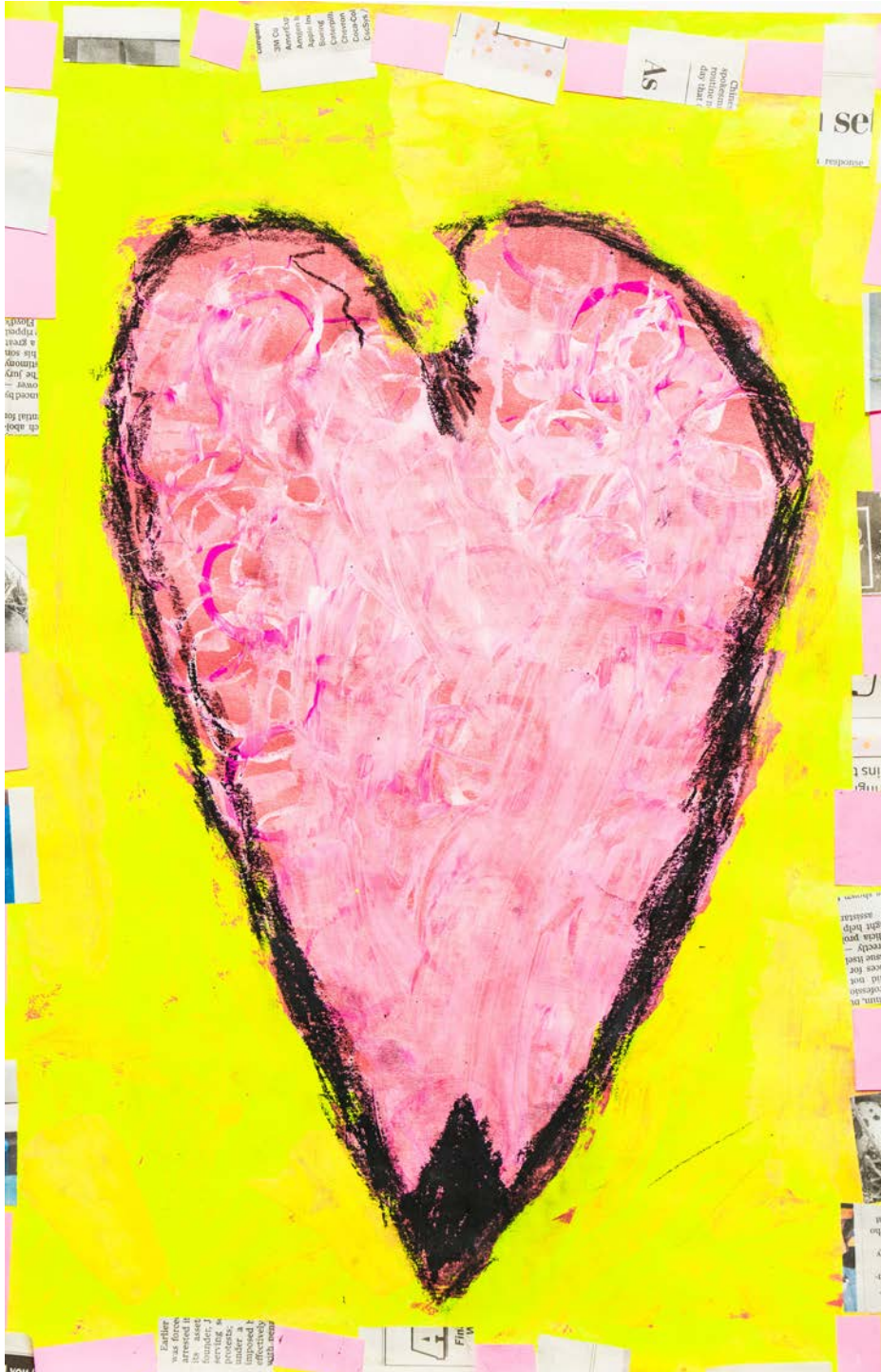


**CHARLINE KASONDWA / AGNOR-HURT**

# TABLE OF CONTENTS

- 3** ..... Welcome from the Superintendent & School Board Chair
- 4** ..... School Board Information
- 5** ..... Superintendent's Cabinet
- 6** ..... Strategic Plan: *Learning for All*
- 7** ..... Policy Statements
- 8-33** ..... 13-Month Calendar
- 34** ..... Important Dates
- 35** ..... Test Schedules
- 36** ..... Inclement Weather Policy
- 37** ..... School Lunch Information
- 38** ..... Department Directory
- 39** ..... School Directory
- 41** ..... Key Advisory Groups
- 42** ..... Keep in Touch
- 43** ..... At-a-Glance School Calendar





ETTA GOLDWATER-MADDOX / GREER

## WELCOME!



### Dear School Community Members,

I am so excited to welcome you back to another year with Albemarle County Public Schools, and — if this is your first year with us — I'd like to welcome you with open arms into our school community.

We look forward to our calendar publication each year as a wonderful celebration of the creativity and artistic eye that all of our students possess. I love getting a glimpse of our world through the eyes of our students.

Maybe the most important part of the mission of our new strategic plan, *Learning for All*, is the statement **"We will know every student."** Our calendar publication is one of the many ways we learn about how

our students express themselves through art, and we are so happy to be able to share that expression with you.

We hope that this calendar will help you connect and engage with your school community, whether this is your first, fifth or tenth calendar. I can't wait to see what wonderful things our students will accomplish this school year.

Sincerely,  
Dr. Matthew S. Haas, Superintendent



### Dear ACPS Community Members,

On behalf of the Albemarle County School Board, welcome to another year in Albemarle County Public Schools. We are so excited to have you with us this year.

As a school board, our top priority is always the social, emotional and physical well-being of our students. This is reflected in our new strategic plan, *Learning for All*, which we use as a lens through which to view every decision we make and project we start.

Each year, our goal is to create a learning environment that is safe and welcoming to all students. Each member of the board may set out to achieve this goal in different ways, but we all put 100% of our effort into creating the best possible school experience for our students.

This publication is more than just a calendar. Is it chock-full of all kinds of information to serve you throughout the school year, as well as a celebration of our many creative and talented students. The school board wishes you an exciting and successful school year.

Sincerely  
Graham Paige, School Board Chair

# SCHOOL BOARD INFORMATION

## ABOUT THE BOARD



The Albemarle County School Board and the Superintendent of Schools are bound in a partnership of mutual trust and vision. The school board and the superintendent are responsible for selecting the results that the school system should be pursuing. Together, the school board and the superintendent take primary responsibility for ensuring that Albemarle County

Public Schools is an effective school system. The school board governs Albemarle County Public Schools as a corporate body according to law. Members are elected by the citizens of the county and serve staggered four-year terms. There are seven members; six representing each of our magisterial districts and one at-large member.

## SCHOOL BOARD POLICIES



The school board develops policies to govern the operation of the school system. These policies cover instructional programs, fiscal management, personnel, students, school and community relations, facility maintenance, and many other areas. Copies of our policies are available online through our ElectronicSchoolBoard website and copies that can

be translated can be found on our School Board Policies web page. Community members can also access policies at school division offices and each of our county schools.

## SCHOOL BOARD MEETINGS

The school board meets regularly throughout the school year, typically on the second and fourth Thursday of each month. The board meets at 6:30 p.m. in Lane Auditorium in the County Office Building at 401 McIntire Road. Board meetings are open to the public. Community members can visit the School Board web page at [k12albemarle.org/board](http://k12albemarle.org/board) to access meeting livestreams and recordings; sign up to provide public comment; and view meeting schedules, agendas and minutes.

## CONTACT THE BOARD

Contact information for school board members is provided on the right side of this page and also on our School Board Members web page. Community members may email the entire board at [SchoolBoard@k12albemarle.org](mailto:SchoolBoard@k12albemarle.org). If you are unsure who your school board representative is, you can reference a map of the county's magisterial districts on the school board's Magisterial Districts web page. If you have questions or would like more information about the board, please contact the School Board Clerk at (434) 296-5893.



### JACK JOUETT DISTRICT

**Kate Acuff, J.D., Ph.D.**  
(434) 979-6333  
[kacuff@k12albemarle.org](mailto:kacuff@k12albemarle.org)  
*Term expires: 12/31/2025*



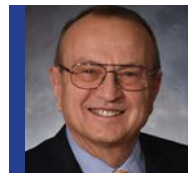
### RIVANNA DISTRICT

**Judy Le**  
(434) 326-8315  
[jle@k12albemarle.org](mailto:jle@k12albemarle.org)  
*Term expires: 12/31/2023*



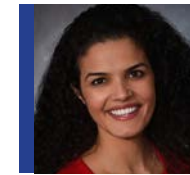
### SCOTTSVILLE DISTRICT

**Ellen Osborne**  
(434) 249-3295  
[eosborne@k12albemarle.org](mailto:eosborne@k12albemarle.org)  
*Term expires: 12/31/2023*



### AT-LARGE REP.

**Jonno Alcaro**  
(434) 906-9300  
[jalcaro@k12albemarle.org](mailto:jalcaro@k12albemarle.org)  
*Term expires: 12/31/2023*



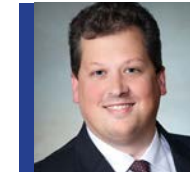
### RIO DISTRICT

**Katrina Callsen, Vice Chair**  
(860) 753-1335  
[kcallsen@k12albemarle.org](mailto:kcallsen@k12albemarle.org)  
*Term expires: 12/31/2025*



### SAMUEL MILLER DISTRICT

**Graham Paige, Chair**  
(434) 286-3639  
[gpaige@k12albemarle.org](mailto:gpaige@k12albemarle.org)  
*Term expires: 12/31/2025*



### WHITE HALL DISTRICT

**David Oberg**  
(434) 981-1160  
[doberg@k12albemarle.org](mailto:doberg@k12albemarle.org)  
*Term expires: 12/31/2023*

**VIEW DISTRICT MAP**



(FROM LEFT)  
JOOSJE LA FLEUR / WESTERN ALBEMARLE  
BELLA FARMER / WESTERN ALBEMARLE  
JENNA WICEK / WESTERN ALBEMARLE  
NORA WILSON / WESTERN ALBEMARLE  
LILLY LEWIS / HENLEY



# SUPERINTENDENT'S CABINET



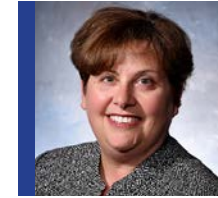
**Dr. Matthew S. Haas**  
Superintendent of Schools  
SuperintendentOffice@  
k12albemarle.org

(434) 296-5826



**Debora Collins**  
Deputy Superintendent

(434) 296-5820



**Dr. Clare Keiser**  
Assistant Superintendent for  
Organizational Development and  
Human Resource Leadership

(434) 296-5820



**Dr. Daphne Keiser**  
Assistant Superintendent for School  
Community Engagement

(434) 296-5820



**Patrick McLaughlin**  
Assistant Superintendent for  
Strategic Planning

(434) 296-5820



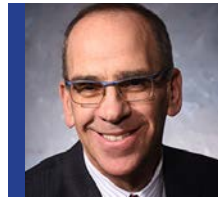
**Rosalyn Schmitt**  
Chief Operating Officer

(434) 296-5820



**Dr. Christine Diggs**  
Chief Technology Officer

(434) 872-4569



**Ross Holden**  
School Board Attorney

(434) 296-5820

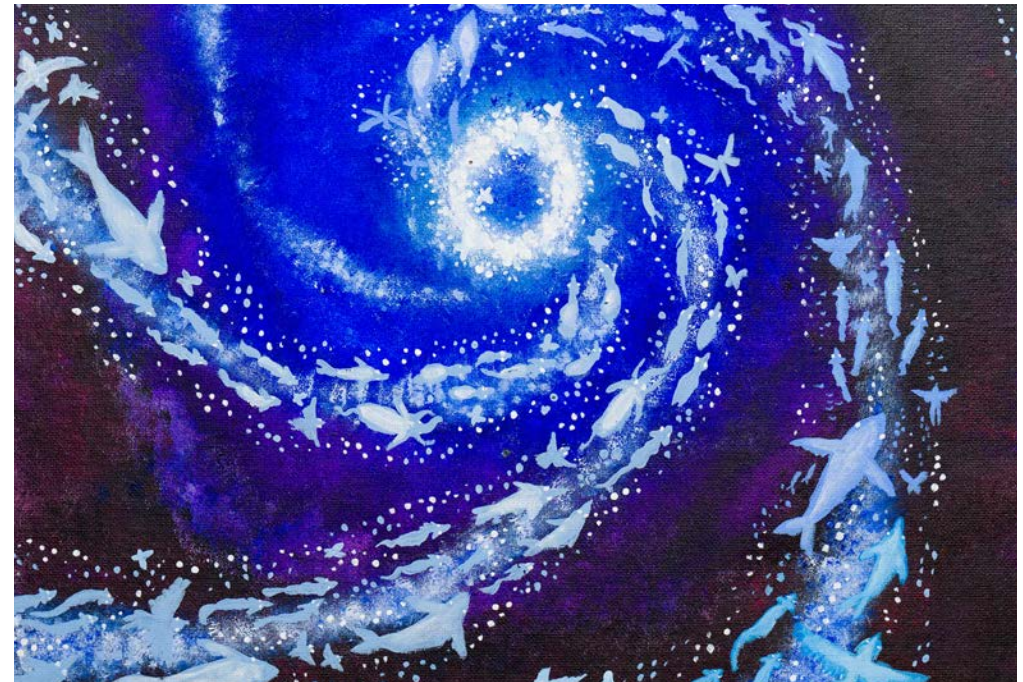


**Phil Giaramita**  
Strategic Communications Officer

(434) 972-4049



JACKSON KINGERY / HOLLYMEAD



NEELA COOPER / MONTICELLO



# LEARNING FOR ALL

## VISION

Our learners are engaged in authentic, challenging and relevant learning experiences, becoming lifelong contributors and leaders in our dynamic and diverse society.

## MISSION

Working together as a team, we will end the predictive value of race, class, gender, and special capacities for our children’s success through high-quality teaching and learning for all. We seek to build relationships with families and communities to ensure that every student succeeds.

**We will know every student.**

## VALUES

- » **Equity:** We will provide every student with the level of support necessary to thrive.
- » **Excellence:** We will mitigate barriers and provide opportunities for every student to be academically successful.
- » **Family and Community:** We will engage with and share the responsibility for student success with families and community partners.
- » **Wellness:** We will support the physical and emotional health of our students and staff.



## GOALS

### THRIVING STUDENTS

ACPS will facilitate learning experiences grounded in high expectations, networks of care, and student curiosity to ensure academic and social-emotional development for all students while eliminating opportunity, access, and achievement gaps.

### AFFIRMING AND EMPOWERING COMMUNITIES

ACPS commits to developing a culturally-responsive environment that will respect and champion the diversity of life experiences of all stakeholders and supports the physical and mental health of our students, staff, and families so they are actively empowered to engage in our school community.

### EQUITABLE, TRANSFORMATIVE RESOURCES

ACPS will attract, develop, and retain the highest quality staff; develop sustainable and modern facilities, infrastructure, and equipment; and distribute all resources in an equitable manner to transform learning experiences and opportunities.



NOAH MAMADOU / WOODBROOK



MEGAN TAYLOR / LAKESIDE



# POLICY STATEMENTS

## ANTI-RACISM

The Albemarle County School Board and Albemarle County Public Schools reject all forms of racism as destructive to the school division's mission, vision, values and goals. The board is committed to the following principles:



1. Establishing and sustaining a school community that shares the collective responsibility to address, eliminate and prevent actions, decisions and outcomes that result from and perpetuate racism.
2. Eliminating inequitable practices and cultivating the unique gifts, talents and interests of every child to end the predictive value of social or cultural factors such as race, class or gender on student success.
3. Respecting and championing the diversity and life experiences of all community members to support the school division's mission, vision, values, goals and objectives.
4. Acknowledging that racism is often compounded by other forms of discrimination, including, but not limited to, those protective classes referenced in School Board Policy AC, *Nondiscrimination*.

## NONDISCRIMINATION

Albemarle County Public Schools does not discriminate on the basis of sex, gender, race, color, national origin, disability, religion, ancestry, age, marital status, genetic information or any other characteristic protected by law in its programs and activities, and provides equal access to the Boy Scouts of America, the Girl Scouts of the USA, and other designated youth groups.

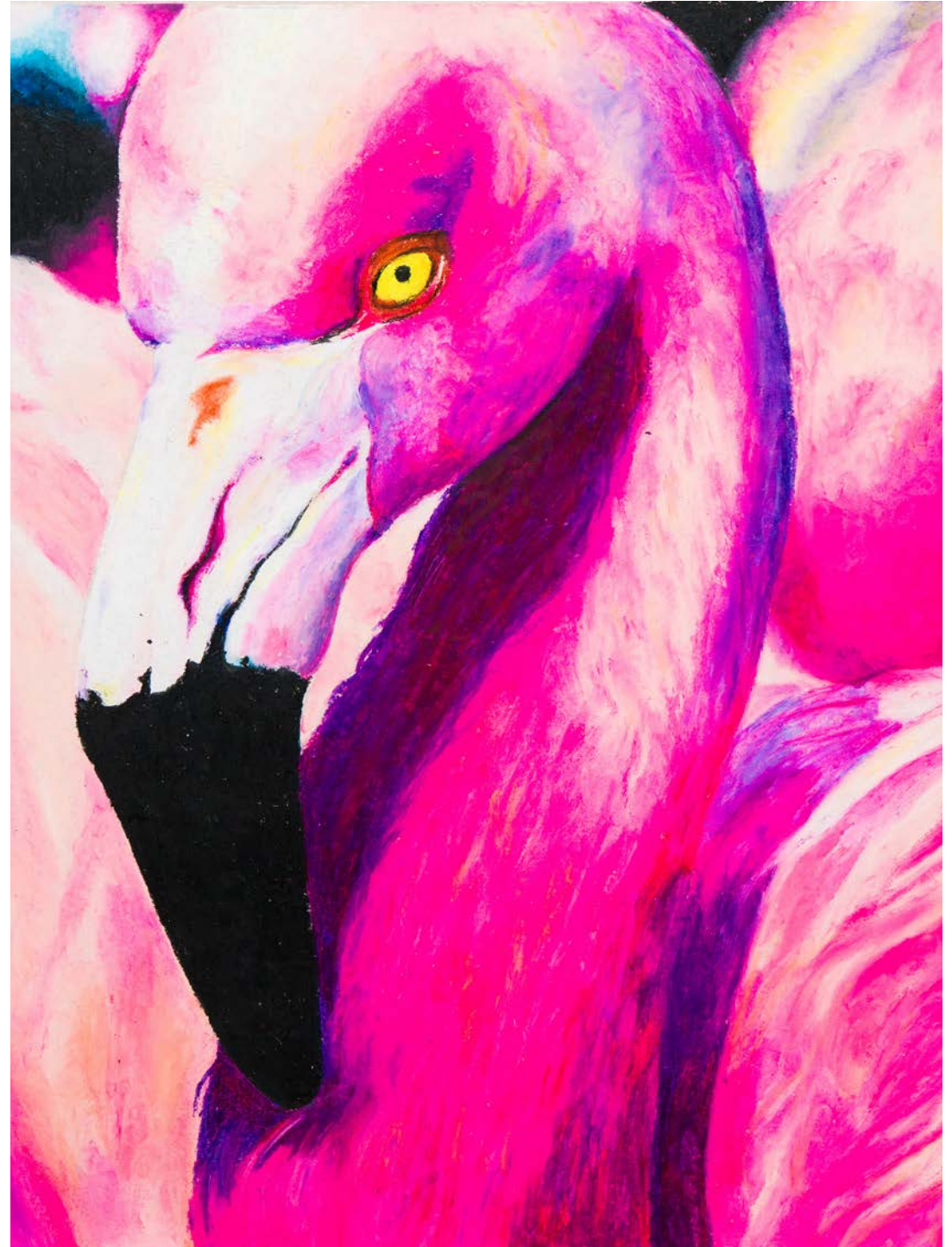


**Students** who have questions or concerns regarding compliance with the school division's Nondiscrimination Policy should contact:

Executive Director of Special Education & Student Services  
401 McIntire Road, 3rd Floor, Charlottesville, VA 22902  
(434) 296-5885

**Employees** who have questions or concerns regarding compliance with the school division's Nondiscrimination Policy should contact:

Director of Human Resources  
401 McIntire Road, 1st Floor, Charlottesville, VA 22902  
(434) 296-5827



JORDAN STONE / WESTERN ALBEMARLE







SUN	MON	TUES	WEDS	THURS	FRI	SAT
31	1	2	3	4	5	6
7	8	9 New Teacher Academy (Aug. 9-12)	10	11 Regular School Board Meeting 6:30 p.m. Lane Auditorium	12	13
14	15 Teacher Workday/ Professional Development (PD) Day	16 Full Day of PD	17 Teacher Workday/ PD Day	18 Teacher Workday/ PD Day	19 Full Day of PD	20
21	22 Teacher Workday/ PD Day	23 Teacher Workday/ PD Day	24 First Day of School!	25 School Board Work Session 6:30 p.m. Lane Auditorium	26	27
28	29	30	31	1	2	3

## NOTES

Schools host Open House events prior to the first day of school. Please see page 34 for the Open House schedule.

---



---



---



---



---



---



---



---

### JULY 2022

S	M	T	W	T	F	S
					1	2
3	4	5	6	7	8	9
10	11	12	13	14	15	16
17	18	19	20	21	22	23
24	25	26	27	28	29	30
31						

### SEPTEMBER 2022

S	M	T	W	T	F	S
				1	2	3
4	5	6	7	8	9	10
11	12	13	14	15	16	17
18	19	20	21	22	23	24
25	26	27	28	29	30	







SUN	MON	TUES	WEDS	THURS	FRI	SAT
28	29	30	31	1	2	3
4	5 Labor Day Holiday	6	7	8 Regular School Board Meeting 6:30 p.m. Lane Auditorium	9	10
11 National Arts in Education Week (Sept. 11 to Sept. 17)	12	13 Special Education Advisory Committee (SEAC) Meeting 7 p.m. to 9 p.m.	14	15	16	17
18	19	20	21 School Health Advisory Board (SHAB) Meeting 6:30 p.m. to 8:30 p.m. Parent Council Meeting 6:30 p.m.	22 School Board Work Session 6:30 p.m. Lane Auditorium	23 First Day of Autumn	24
25	26 Morning Reserved for DPLC (No School) Afternoon Reserved for PD	27	28	29	30	1

## NOTES

National Hispanic Heritage Month is observed Sept. 15 to Oct. 15.

Individual schools will share information for Back-to-School Dates.

Please see Important Dates on page 34 for a schedule.

### AUGUST 2022

S	M	T	W	T	F	S
	1	2	3	4	5	6
7	8	9	10	11	12	13
14	15	16	17	18	19	20
21	22	23	24	25	26	27
28	29	30	31			

### OCTOBER 2022

S	M	T	W	T	F	S
						1
2	3	4	5	6	7	8
9	10	11	12	13	14	15
16	17	18	19	20	21	22
23	24	25	26	27	28	29
30	31					







SUN	MON	TUES	WEDS	THURS	FRI	SAT
25	26	27	28	29	30	1
2 <i>National Custodian Day</i>	3	4	5 <i>International Walk to School Day</i>	6	7	8
9	10 <i>National School Lunch Week (Oct. 10 to Oct. 14)</i>	11 SEAC Meeting 7 p.m. to 9 p.m.	12	13 Regular School Board Meeting 6:30 p.m. Lane Auditorium	14	15
16	17 <i>National School Bus Safety Week (Oct. 17 to Oct. 21)</i>  <i>Digital Citizenship Week (Oct. 17 to Oct. 21)</i>	18	19 Parent Council Meeting 6:30 p.m.	20	21	22
23	24	25	26 <i>End of First Quarter</i>	27 Morning Reserved for DPLC (No School)  Afternoon Reserved for Teacher Workday	28 Teacher Workday (No School)	29
30	31					

## NOTES

National Hispanic Heritage Month is observed Sept. 15 to Oct. 15.

October is National Bullying

Prevention Month, National Principals

Month, and Disability History and Awareness Month.

October 27 is National Mentoring Day.

The School Board will hold a work session on October 27.

Schools hold fall parent conferences in October and November. See page 34 for the parent conference schedule.

### SEPTEMBER 2022

S	M	T	W	T	F	S
				1	2	3
4	5	6	7	8	9	10
11	12	13	14	15	16	17
18	19	20	21	22	23	24
25	26	27	28	29	30	

### NOVEMBER 2022

S	M	T	W	T	F	S
		1	2	3	4	5
6	7	8	9	10	11	12
13	14	15	16	17	18	19
20	21	22	23	24	25	26
27	28	29	30			







# NOVEMBER 2022

(LEFT) ISABELLA SOUKOULIS  
 STONY POINT  
 (RIGHT) NOAH DICKERSON  
 MOUNTAIN VIEW

SUN	MON	TUES	WEDS	THURS	FRI	SAT
30	31	1	2	3	4	5
6 <i>Daylight Saving Time Ends (Set clocks back 1 hour)</i>	7 <i>Full Day of PD (No school)</i>	8 <i>Election Day (No school)</i> Day reserved for Parent Conferences	9	10 <i>Regular School Board Meeting 6:30 p.m. Lane Auditorium</i>	11 <i>Veterans Day</i>	12
13	14	15 <i>SEAC Meeting 7 p.m. to 9 p.m.</i>	16 <i>Education Support Professionals Day</i>  <i>Parent Council Meeting 6:30 p.m.</i>	17	18 <i>Substitute Educators Day</i>	19
20	21	22	23 <i>Thanksgiving Holiday (Nov. 23 to Nov. 25)</i>	24	25	26
27	28	29	30	1	2	3

## NOTES

*Schools hold fall parent conferences in October and November. See page 34 for the parent conference schedule.*

---



---



---



---



---



---



---



---

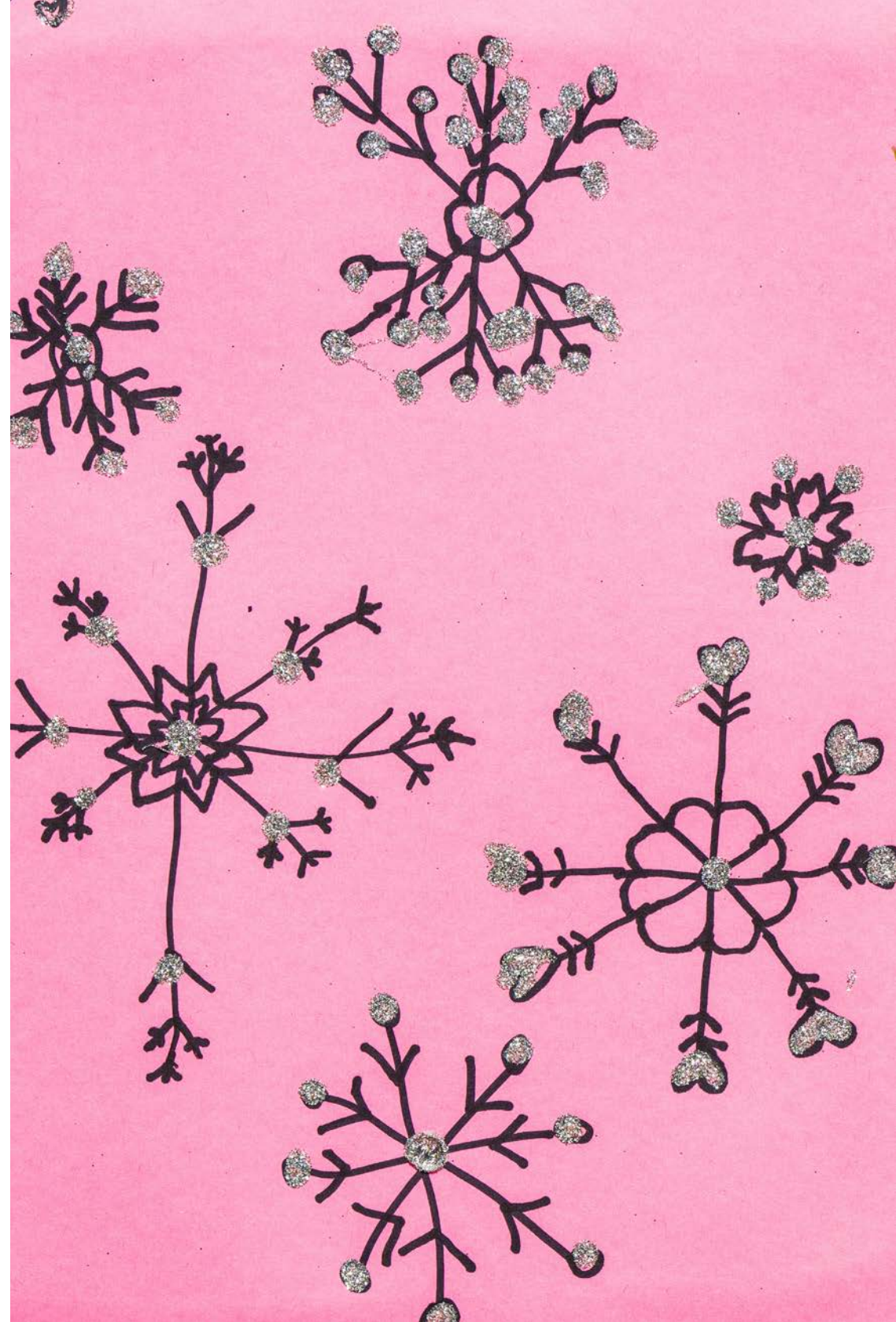
### OCTOBER 2022

S	M	T	W	T	F	S
						1
2	3	4	5	6	7	8
9	10	11	12	13	14	15
16	17	18	19	20	21	22
23	24	25	26	27	28	29
30	31					

### DECEMBER 2022

S	M	T	W	T	F	S
				1	2	3
4	5	6	7	8	9	10
11	12	13	14	15	16	17
18	19	20	21	22	23	24
25	26	27	28	29	30	31















# JANUARY 2023

SUN	MON	TUES	WEDS	THURS	FRI	SAT
<b>1</b> <i>New Year's Day</i>	<b>2</b> Last Day of Winter Break (Dec. 19 to Jan. 2)	<b>3</b>	<b>4</b>	<b>5</b>	<b>6</b>	<b>7</b>
<b>8</b>	<b>9</b>	<b>10</b> SEAC Meeting 7 p.m. to 9 p.m.	<b>11</b>	<b>12</b> Regular School Board Meeting (Organizational/Business) 6:30 p.m. Lane Auditorium	<b>13</b>	<b>14</b>
<b>15</b>	<b>16</b> Martin Luther King, Jr. Day Holiday	<b>17</b>	<b>18</b> SHAB Meeting 6:30 p.m. to 8:30 p.m.  Parent Council Meeting 6:30 p.m.	<b>19</b>	<b>20</b> End of Second Quarter	<b>21</b>
<b>22</b>	<b>23</b> Teacher Workday (No School)	<b>24</b> Morning Reserved for DPLC (No School)  Afternoon Reserved for Teacher Workday	<b>25</b>	<b>26</b>	<b>27</b>	<b>28</b>
<b>29</b>	<b>30</b>	<b>31</b>	<b>1</b>	<b>2</b>	<b>3</b>	<b>4</b>

## NOTES

Please visit [esb.k12albemarle.org](http://esb.k12albemarle.org) for School Board meeting dates for 2023.

---



---



---



---



---



---



---



---

### DECEMBER 2022

S	M	T	W	T	F	S
				1	2	3
4	5	6	7	8	9	10
11	12	13	14	15	16	17
18	19	20	21	22	23	24
25	26	27	28	29	30	31

### FEBRUARY 2023

S	M	T	W	T	F	S
			1	2	3	4
5	6	7	8	9	10	11
12	13	14	15	16	17	18
19	20	21	22	23	24	25
26	27	28				







# FEBRUARY 2023

(LEFT) CLAIRE MENG  
HOLLYMEAD  
(RIGHT) LENNOX MESLAR  
MURRAY

SUN	MON	TUES	WEDS	THURS	FRI	SAT
29	30	31	1	2	3	4
5	6 <i>National School Counseling Week (Feb. 6 to Feb. 10)</i>	7	8	9	10	11
12	13	14 <i>SEAC Meeting 7 p.m. to 9 p.m.</i>	15 <i>Parent Council Meeting 6:30 p.m.</i>	16	17	18
19	20 <i>Morning Reserved for DPLC (No School)</i> <i>Afternoon Reserved for Teacher Workday</i>	21	22	23 <i>Digital Learning Day</i>	24	25
26	27	28	1	2	3	4

## NOTES

February is Black History Month and Career and Technical Education Month. Schools hold spring parent conferences in February and March. See page 34 for the parent conference schedule.

---



---



---



---



---



---

### JANUARY 2023

S	M	T	W	T	F	S
1	2	3	4	5	6	7
8	9	10	11	12	13	14
15	16	17	18	19	20	21
22	23	24	25	26	27	28
29	30	31				

### MARCH 2023

S	M	T	W	T	F	S
			1	2	3	4
5	6	7	8	9	10	11
12	13	14	15	16	17	18
19	20	21	22	23	24	25
26	27	28	29	30	31	







SUN	MON	TUES	WEDS	THURS	FRI	SAT
26	27	28	1	2 <i>Read Across America Day</i>	3	4
5	6 <i>National School Breakfast Week (March 6 to March 10)</i>	7	8	9	10	11
12 <i>Daylight Saving Time Ends (Set clocks back 1 hour)</i>	13	14 SEAC Meeting 7 p.m. to 9 p.m.	15 SHAB Meeting 6:30 p.m. to 8:30 p.m.  Parent Council Meeting 6:30 p.m.	16	17 Morning Reserved for DPLC (No School)  Afternoon Reserved for Teacher Workday	18
19	20 <i>First Day of Spring</i>	21	22	23	24	25
26	27	28	29	30 <i>End of Third Quarter</i>	31 Teacher Workday (No School)	1

## NOTES

March is Equity in Education Month, Music in Our Schools Month, Women's History Month, and Youth in Art Month.

Schools hold spring parent conferences in February and March. See page 34 for the parent conference schedule.

### FEBRUARY 2023

S	M	T	W	T	F	S
			1	2	3	4
5	6	7	8	9	10	11
12	13	14	15	16	17	18
19	20	21	22	23	24	25
26	27	28				

### APRIL 2023

S	M	T	W	T	F	S
						1
2	3	4	5	6	7	8
9	10	11	12	13	14	15
16	17	18	19	20	21	22
23	24	25	26	27	28	29
30						







SUN	MON	TUES	WEDS	THURS	FRI	SAT
26	27	28	29	30	31	1
2	3 Spring Break (April 3 to April 7)  National Assistant Principals Week (April 3 to April 7)	4	5	6	7	8
9	10 ACPS Building Services Professionals Appreciation Week (April 10 to April 14)	11 SEAC Meeting 7 p.m. to 9 p.m.	12	13	14	15
16 National Student Leadership Week (April 16 to April 22)	17 Public School Volunteer Week (April 17 to April 21)	18	19 Parent Council Meeting 6:30 p.m.	20	21	22
23 30	24 National Library Week (April 23 to April 29)	25	26 Administrative Professionals Day	27	28 Morning Reserved for DPLC (No School)  Afternoon Reserved for Teacher Workday	29

## NOTES

April is School Library Month.

---



---



---



---



---



---



---



---



---



---

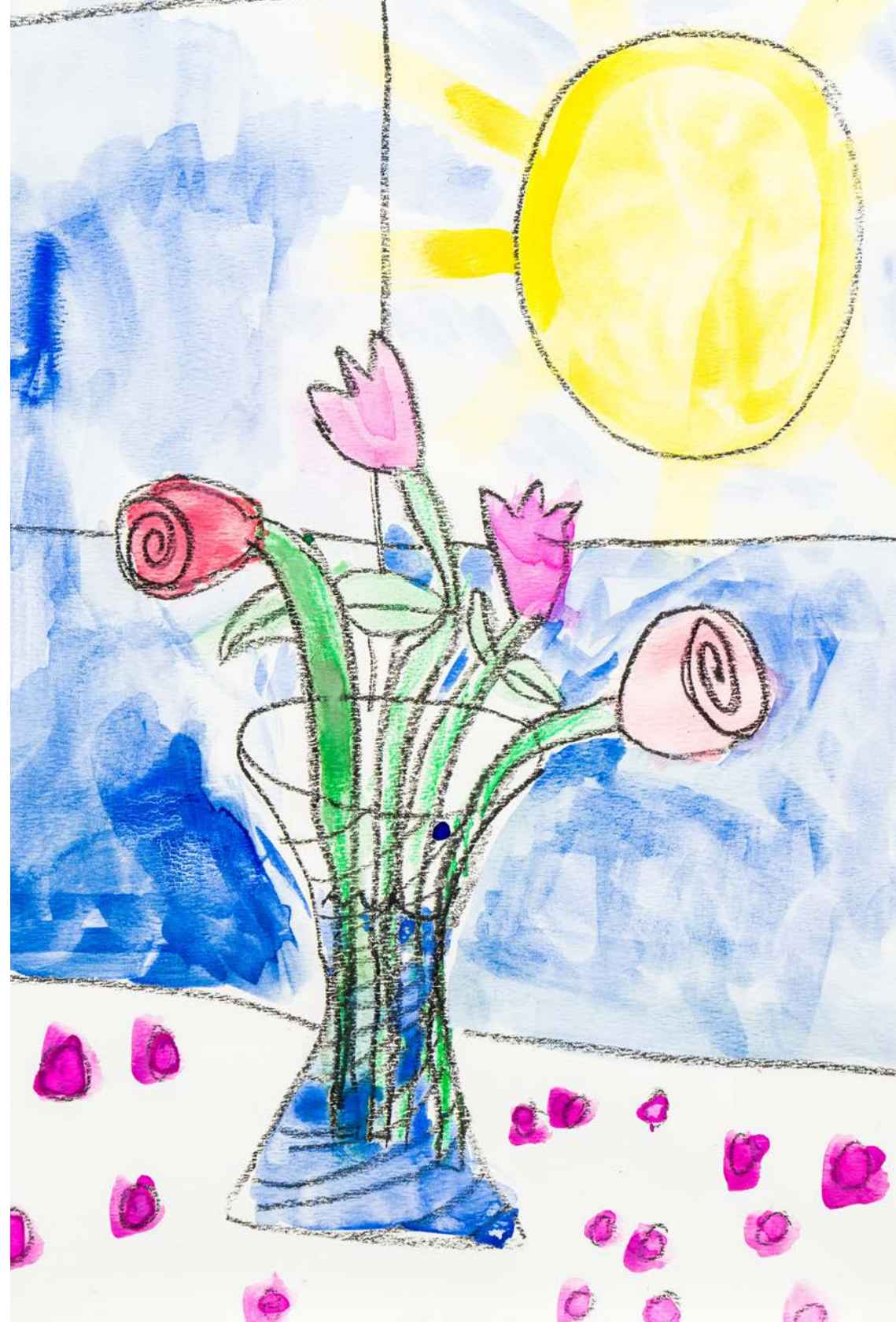
### MARCH 2023

S	M	T	W	T	F	S
			1	2	3	4
5	6	7	8	9	10	11
12	13	14	15	16	17	18
19	20	21	22	23	24	25
26	27	28	29	30	31	

### MAY 2023

S	M	T	W	T	F	S
	1	2	3	4	5	6
7	8	9	10	11	12	13
14	15	16	17	18	19	20
21	22	23	24	25	26	27
28	29	30	31			







SUN	MON	TUES	WEDS	THURS	FRI	SAT
30	1 <i>National Teacher Appreciation Week (May 1 to May 5)</i>  <i>National School Principals' Day</i>	2 <i>National Teacher Day</i>	3	4	5 <i>School Lunch Hero Day</i>	6
7	8	9 <i>SEAC Meeting 7 p.m. to 9 p.m.</i>	10 <i>National School Nurse Day</i>	11	12	13
14	15	16	17 <i>SHAB Meeting 6:30 p.m. to 8:30 p.m.</i>  <i>Parent Council Meeting 6:30 p.m.</i>	18	19	20
21	22	23	24	25	26	27
28	29 <i>Memorial Day Holiday</i>	30	31	1	2	3

## NOTES

May is Asian Pacific American

Heritage Month.

---

---

---

---

---

---

---

---

---

---

---

---

### APRIL 2023

S	M	T	W	T	F	S
						1
2	3	4	5	6	7	8
9	10	11	12	13	14	15
16	17	18	19	20	21	22
23	24	25	26	27	28	29
30						

### JUNE 2023

S	M	T	W	T	F	S
				1	2	3
4	5	6	7	8	9	10
11	12	13	14	15	16	17
18	19	20	21	22	23	24
25	26	27	28	29	30	















# 07

# JULY 2023

CELIA BEDARD  
BROADUS WOOD

SUN	MON	TUES	WEDS	THURS	FRI	SAT
25	26	27	28	29	30	1
2	3	4 Independence Day Holiday	5	6	7	8
9	10	11	12	13	14	15
16	17	18	19	20	21	22
23	24	25	26	27	28	29
30	31					

## NOTES

---

---

---

---

---

---

---

---

---

---

---

---

### JUNE 2023

S	M	T	W	T	F	S
				1	2	3
4	5	6	7	8	9	10
11	12	13	14	15	16	17
18	19	20	21	22	23	24
25	26	27	28	29	30	

### AUGUST 2023

S	M	T	W	T	F	S
		1	2	3	4	5
6	7	8	9	10	11	12
13	14	15	16	17	18	19
20	21	22	23	24	25	26
27	28	29	30	31		











# IMPORTANT DATES

*Note: Dates printed in this calendar are subject to change. Individual schools will share details for these events.*

*Special Notes: Dates for high school prom and graduation will be announced at a later date. JROTC and Early College will communicate event schedules separately.*

## OPEN HOUSE DATES

<b>WEDNESDAY, AUGUST 17</b>	All Middle Schools
<b>THURSDAY, AUGUST 18</b>	All High Schools/Academies and CLS
<b>MONDAY, AUGUST 22</b>	All Elementary Schools
<b>TUESDAY, AUGUST 23</b>	CATEC and Center I

## BACK-TO-SCHOOL EVENTS

<b>TUESDAY, SEPTEMBER 13</b>	All Middle Schools
<b>THURSDAY, SEPTEMBER 15</b>	All High Schools/Academies and CLS
<b>TUESDAY, SEPTEMBER 20</b>	All Elementary Schools
<b>WEDNESDAY, SEPTEMBER 21</b>	Center I

## FALL PARENT CONFERENCES

<b>WEDNESDAY, OCTOBER 19</b>	All High Schools/Academies and CLS
<b>THURSDAY, OCTOBER 20</b>	All Middle Schools
<b>TUESDAY, OCTOBER 25</b>	All High Schools/Academies and CLS
<b>WEDNESDAY, OCTOBER 26</b>	All Middle Schools
<b>THURSDAY, NOVEMBER 3</b>	All High Schools/Academies and CLS
<b>WEDNESDAY, OCTOBER 12 TO</b>	All Elementary Schools
<b>WEDNESDAY, NOVEMBER 9</b>	
<b>TUESDAY, NOVEMBER 8 TO</b>	CATEC and Center I
<b>THURSDAY, NOVEMBER 10</b>	

## SPRING PARENT CONFERENCES

<b>TUESDAY, FEBRUARY 28</b>	All High Schools/Academies and CLS
<b>WEDNESDAY, MARCH 1</b>	All High Schools/Academies and CLS
<b>MONDAY, MARCH 13 TO</b>	CATEC and Center I
<b>THURSDAY, MARCH 16</b>	





# TESTING SCHEDULES

## VIRGINIA STANDARDS OF LEARNING

During the course of the school year, students in grades 3 through 8 and some in grades 9 through 12 will participate in required state academic testing. The Standards of Learning (SOL) for Virginia Public Schools establish minimum expectations for student learning and achievement.



Students in grades 3 through 8 take SOL tests in reading, writing, and math. In addition, students in grades 5 and 8 take SOL tests in science and history/social studies. High school students take end-of-course SOL exams in all four subject areas.

## 2022-23 SOL TESTING WINDOWS

- Fall 2022 SOL Writing test Window: October 18 through November 5
- Fall 2022 Non-Writing Test Window: December 8 through January 21
- Spring 2023 SOL Writing Test Window: March 7 through April 1
- Spring 2023 SOL Non-Writing Test Window: May 9 through June 6

## SAT & SAT SUBJECT TESTS

The SAT and SAT Subject Tests are designed to assess students' academic readiness for college. The SAT is a college entrance exam that measures skills in reading, writing and math. Most students take the SAT during their junior or senior year of high school.



SAT Subject tests are content-based tests that allow students to showcase their achievement in specific subject areas. Registration and testing dates for the SAT and SAT Subject Tests can be found at [sat.org](https://sat.org).

## PSAT/NMSQT

The Preliminary SAT/National Merit Scholarship Qualifying Test (PSAT/NMSQT) measures critical reading skills, writing skills and math problem-solving skills, and provides first-hand practice for college entrance exams, such as the SAT. Taking the test can qualify students for scholarships and other honors. Typically, students take the test as sophomores and juniors, though some take it earlier.

High schools will offer the PSAT/NMSQT on **Wednesday, October 12, 2022**.



## ADVANCED PLACEMENT EXAMS

The Advanced Placement (AP) Examinations are administered each year in May and represent the culmination of college-level work in a given discipline in a secondary school setting. Rigorously developed by committees of college and AP high school faculty, the AP Exams test students' ability to perform at a college level. Students who perform well can receive college credit and/or advanced standing at thousands of universities worldwide. For more information, visit [apstudents.org](https://apstudents.org).



## 2022-23 AP EXAM SCHEDULE

Week 1	Morning (8 a.m.) Local Time	Afternoon (12 noon) Local Time
Monday, May 1	United States Government and Politics	Chemistry Spanish Literature and Culture
Tuesday, May 2	Chinese Language and Culture Environmental Science	Psychology
Wednesday, May 3	English Literature and Composition	Comparative Government and Politics Computer Science A
Thursday, May 4	Human Geography Macroeconomics	Seminar Statistics
Friday, May 5	European History United States History	Art History Microeconomics
Week 2	Morning (8 a.m.) Local Time	Afternoon (12 noon) Local Time
Monday, May 8	Calculus AB Calculus BC	Computer Science Principles Italian Language and Culture
Tuesday, May 9	English Language and Composition Japanese Language and Culture	Physics C: Mechanics (12 p.m.) Physics C: Electricity & Magnetism (2 p.m.)
Wednesday, May 10	Spanish Language and Culture	Biology
Thursday, May 11	French Language and Culture World History: Modern	Physics 1: Algebra-Based
Friday, May 12	German Language and Culture Music Theory	Latin Physics 2: Algebra-Based

**Art and Design:** Friday, May 5, 2023 (8 p.m. ET), is the deadline for AP Art and Design digital portfolios to be submitted to the AP Program. May 5 is also the last day to gather 2-D Art and Design and Drawing students to assemble physical portfolios.





ANNABEL AXFORD / MOUNTAIN VIEW



MANISH MONGER / MONTICELLO

## INCLEMENT WEATHER DECISIONS

ACPS approaches inclement weather decisions with the safety of our students, staff, and other members of our community as our primary concern. We consider information from several sources to help us reach each decision, including:



- Road conditions within the entire county for bus travel and student and staff drivers;
- Weather forecasts; and
- Assessments by law enforcement, the Virginia Department of Transportation (VDOT), and other localities.

## FIND OUT ABOUT SCHEDULE CHANGES

Families and community members can learn the division's school schedule status during inclement weather in several ways:

### SCHOOL SCHEDULE HOTLINE

Community members may call (434) 296-5886 to listen to a prerecorded message about school operations for the day. The recording is updated by 5:30 a.m.

*Para español, llame al (434) 975-9332.*

### ELECTRONIC ALERT: PHONE, EMAIL AND/OR TEXT

Parents and guardians are provided an opportunity at the start of each school year to enroll in the Electronic School Notification System to receive notifications from the school division by phone (landline or cellphone), email and/or text. Parents or guardians may also enroll at any time or change their preferences by contacting their child's school.

### ALBEMARLE COUNTY PUBLIC SCHOOLS WEBSITE

The division will activate our web alert system to help communicate school schedule changes. The system uses pop-up messages to alert website visitors to important information.

### SOCIAL MEDIA

Like us on Facebook at [facebook.com/k12albemarle](https://www.facebook.com/k12albemarle) or follow us on Twitter at [twitter.com/k12albemarle](https://twitter.com/k12albemarle) for inclement weather updates.

### LOCAL MEDIA OUTLETS

School schedule changes are broadcast on several local radio and television stations, as well as local media websites.

For more information about school schedule changes due to inclement weather, including decision and communication timelines, visit [k12albemarle.org/closings](https://www.k12albemarle.org/closings).



# SCHOOL MEALS

The purpose of the Child Nutrition Program, in partnership with our school community, is to provide healthy and balanced meals by offering excellent service while promoting nutrition and wellness. Visit us online at [k12albemarle.org/ChildNutrition](http://k12albemarle.org/ChildNutrition) to access menus, nutritional standards, the Application for Free and Reduced Price Meals, income guidelines and more. Or, call (434) 295-0566.



## BREAKFAST AND LUNCH

Breakfast is available at all schools and provides students with the energy and nutrients needed to keep on task throughout the school day. All elementary, middle and comprehensive high schools in Albemarle County offer school lunch as part of the United States Department of Agriculture (USDA) National School Lunch Program.

## MENUS

Albemarle County Public Schools menus are planned by a nutritionist and follow the regulations set forth in the Healthy, Hunger-Free Kids Act of 2010. In accordance with regulations, students must choose a serving of either fruit or vegetables to qualify their meal as a school breakfast or lunch. Each day, a variety of entree choices, featured salads, fresh fruit and vegetables, and whole grains are offered. A la carte items, such as yogurt, fresh fruit and reduced-fat snacks, are available as well. Menus can be viewed on our website at [k12albemarle.org/ChildNutrition](http://k12albemarle.org/ChildNutrition). Students have choices in the food they select. Come join us for a meal and see the great choices we offer!

## FREE AND REDUCED PRICE MEALS

Families may apply for free and reduced meal benefits online. The process is safe, secure, private and available any time. Your data is transmitted to the Child Nutrition Office the same day you apply, allowing for faster processing so you can receive benefits more quickly. Additionally, an Application for Free and Reduced Price Meals is included in every student's annual school registration packet and available at each school office. The form is also available at [k12albemarle.org/ChildNutrition](http://k12albemarle.org/ChildNutrition). For those interested in applying, **a new application should be completed each school year.**

Families are encouraged to complete the application if they believe they may be eligible for free or reduced price meals. Eligibility status is completely confidential and applications are accepted at any time.

### 2022-23 MEAL PRICES

	Full Price	Reduced
Student Breakfast	Information not available as of publication	
Student Lunch, Elementary	Information not available as of publication	
Student Lunch, Middle & High	Information not available as of publication	
Adult Breakfast	\$1.90	
Adult Lunch	\$3.90	

*\*Student breakfast and lunch prices were unavailable as of publication. Please see [k12albemarle.org/our-departments/nutrition/pricing](http://k12albemarle.org/our-departments/nutrition/pricing) for school meal pricing information.*

## PAYMENT

Individual student accounts allow all students to prepay for meals, which helps speed up the lunch lines. When they reach the end of the lunch line, students simply enter a five-digit PIN into a keypad, and the cost of their meal is deducted from their balance. Students in need of a meal who have no funds available will be provided with a qualified USDA meal and their parent or guardian will be responsible for those charges. Parents or guardians are responsible for keeping up-to-date with their child's meal account balance.



Any amount of money can be deposited into an account using cash or check. With this option, please be sure to write the student's full name and PIN on the check or envelope containing the money. We encourage all parents or guardians to set up an account at [mySchoolBucks.com](http://mySchoolBucks.com). There is no cost to set up an account, which allows parents or guardians to view and manage their child's transactions and even set up low-balance notifications. The mySchoolBucks site also offers an online credit card payment option, with a convenience fee. Visit [mySchoolBucks.com](http://mySchoolBucks.com) for details.



ELIZABETH HART / BURLEY



HAYDEN CAHILL / STONE-ROBINSON



# SERVICE DIRECTORY

Included below are many of the most requested phone numbers for our services. For a more extensive list of services, including contact names and web page links, please visit our Directories web page at [k12albemarle.org/directories](http://k12albemarle.org/directories). For assistance locating the information you need, please call (434) 296-5820.

## A-B

Adult, Homeless & Migrant Education .....	(434) 296-3872
Albemarle County Parent Resource Center .....	(434) 296-5885
Assessment (Testing) .....	(434) 296-5820
Athletics .....	(434) 296-5820
Attendance Areas .....	(434) 973-5716
Building Services (Custodial Services, Maintenance) .....	(434) 975-9340
Bus Routes .....	(434) 973-5716

## C-D

Capital Project Planning (Facilities Planning) .....	(434) 296-5829
Child Nutrition Program (School Meals) .....	(434) 295-0566
Communications .....	(434) 972-4049
Community Education: Open Doors .....	(434) 975-9450
Community Engagement .....	(434) 296-5820
Community Usage Hotline .....	(434) 975-9331
Culturally Responsive Teaching .....	(434) 296-5820
Donations .....	(434) 296-5829
Driver Education .....	(434) 975-9450

## E-G

Early Childhood Special Education .....	(434) 296-5885
Elementary Education (Pre-K through 5th Grade) .....	(434) 296-5820
Environmental Management .....	(434) 975-9340
Equity Education .....	(434) 296-5820
Extended Day Enrichment Programs (EDEP) .....	(434) 296-5840
Facility Rental .....	(434) 975-9340
Families in Crisis Program .....	(434) 296-3872
Family Support Program (Social Services Partnership) .....	(434) 972-4010
Fiscal Services (Budget, School Finance) .....	(434) 296-5829
Freedom of Information Act (FOIA) Requests .....	(434) 972-4049
Gold Card Club .....	(434) 296-5820

## H-M

Homeschool .....	(434)296-6517
Human Resources .....	(434) 296-5827
International & ESOL Welcome Center .....	(434) 296-6517
Media Relations.....	(434) 972-4049

## P-R

Policies .....	(434) 296-5820
Preschool .....	(434) 296-5820
ProfessionalDevelopment.....	(434) 296-5820
Research and Survey Requests .....	(434) 296-5820

## S

School Board Information .....	(434) 972-4055
School Counseling .....	(434) 296-5820
School Health Services .....	(434) 296-5820
School Schedule Hotline (English) .....	(434) 296-5886
School Schedule Hotline (español) .....	(434) 975-9332
Secondary Education (Grades 6 through 12) .....	(434) 296-5820
Social Media and Website Services .....	(434) 296-5820
Special Education .....	(434) 296-5885
Strategic Planning .....	(434) 296-5820
Student Registration .....	(434) 296-5820
Student Services (Mental Health and Wellness, Safety, Support) .....	(434) 296-5820
Superintendent's Office .....	(434) 296-5826

## T-W

Technology Support.....	(434) 872-4569
Technology Supper (Service Desk) .....	(434) 975-9444
Transportation Services .....	(434) 973-5716
Volunteer & Business Partnerships .....	(434) 296-5820
Work-Based Learning & Internships .....	(434) 296-5820



# SCHOOL DIRECTORY

SCHOOL/ACADEMY/CENTER	ADDRESS	PHONE	PRINCIPAL/DIRECTOR
Agnor-Hurt Elementary School	3201 Berkmar Dr., Charlottesville, VA 22901	(434) 973-5211	Michael Irani
Baker-Butler Elementary School	2740 Proffit Rd., Charlottesville, VA 22911	(434) 974-7777	Seth Kennard
Broadus Wood Elementary School	185 Buck Mountain Rd., Earlysville, VA 22936	(434) 973-3865	Amy Morris
Brownsville Elementary School	5870 Rockfish Gap Tpke., Crozet, VA 22932	(434) 823-4658	Jason Crutchfield
Crozet Elementary School	1407 Crozet Ave., Crozet, VA 22932	(434) 823-4800	Staci England
Greer Elementary School	190 Lambs Ln., Charlottesville, VA 22901	(434) 973-8371	Stephen Saunders
Hollymead Elementary School	2775 Powell Creek Dr., Charlottesville, VA 22911	(434) 973-8301	Joe McCauley
Meriwether Lewis Elementary School	1610 Owensville Rd., Charlottesville, VA 22901	(434) 293-9304	Jennifer Underwood
Mountain View Elementary School	1757 Avon St. Extended, Charlottesville, VA 22902	(434) 293-7455	Cyndi Wells
Murray Elementary School	3251 Morgantown Rd., Charlottesville, VA 22903	(434) 977-4599	C'ta DeLaurier
Red Hill Elementary School	3901 Red Hill School Rd., North Garden, VA 22959	(434) 293-5332	Nancy McCullen
Scottsville Elementary School	7868 Scottsville Rd., Scottsville, VA 24590	(434) 286-2441	Art Stow, Interim
Stone-Robinson Elementary School	958 North Milton Rd., Charlottesville, VA 22911	(434) 296-3754	Angela Stokes
Stony Point Elementary School	3893 Stony Point Rd., Keswick, VA 22947	(434) 973-6405	Maureen Jensen
Woodbrook Elementary School	100 Woodbrook Dr., Charlottesville, VA 22901	(434) 973-6600	Kristen Williams
Burley Middle School	901 Rose Hill Dr., Charlottesville, VA 22903	(434) 295-5101	Kasaundra Blount
Henley Middle School	5880 Rockfish Gap Tpke., Crozet, VA 22932	(434) 823-4393	LaRuth Ensley
Journey Middle School (formerly Jouett)	210 Lambs Ln., Charlottesville, VA 22901	(434) 975-9320	Ashby Johnson
Lakeside Middle School	2801 Powell Creek Dr., Charlottesville, VA 22911	(434) 975-0599	Michael Craddock
Walton Middle School	4217 Red Hill Rd., Charlottesville, VA 22903	(434) 977-5615	Josh Walton
Albemarle High School	2775 Hydraulic Rd., Charlottesville, VA 22901	(434) 975-9300	Darah Bonham
Monticello High School	1400 Independence Way, Charlottesville, VA 22902	(434) 244-3100	Beth Costa
Western Albemarle High School	5941 Rockfish Gap Tpke., Crozet, VA 22932	(434) 823-8700	Jennifer Sublette
Community Lab School (grades 6-12)	1200 Forest St., Charlottesville, VA 22903	(434) 296-3090	Chad Ratliff
Environmental Studies Academy (ESA)	5941 Rockfish Gap Tpke., Crozet, VA 22932	(434) 823-8700	
Health and Medical Sciences Academy (HMSA)	1400 Independence Way, Charlottesville, VA 22902	(434) 244-3100	Jeremy Dove
Information and Communication Technology Academy (ICTA)	1180 Seminole Trl., Ste. 225, Charlottesville, VA 22901	(434) 244-8900	
Math, Engineering & Science Academy (MESA)	2775 Hydraulic Rd., Charlottesville, VA 22901	(434) 975-9300	Tony Wayne
Center for Learning & Growth	225 Lambs Ln., Charlottesville, VA 22901	(434) 974-8070	Ashley Struzik
Center I	1180 Seminole Trl., Ste. 225, Charlottesville, VA 22901	(434) 244-8900	
Post High	915 Henry Ave., Charlottesville, VA 22903	(434) 977-4610	Ashley Struzik
Charlottesville Albemarle Technical Education Center (CATEC)	1000 East Rio Rd., Charlottesville, VA 22901	(434) 973-4461	Stephanie Carter
Ivy Creek School	227 Lambs Ln., Charlottesville, VA 22901	(434) 975-9420	Gary Wintersgill
Piedmont Regional Education Program	227 Lambs Ln., Charlottesville, VA 22901	(434) 975-9400	Angela Neely

*\*Some program leadership had not been determined at the time of print. Please visit [k12albemarle.org/our-schools](http://k12albemarle.org/our-schools) for the most up-to-date information on leadership.*







## KEY ADVISORY GROUPS

Parent and citizen advisory groups offer a broad range of opportunities for community engagement with public education. For more information about our division-level advisory groups, including opportunities for contributing to their important work, please visit [k12albemarle.org/advisory](http://k12albemarle.org/advisory).



### ADVISORY COMMITTEE FOR ENVIRONMENTAL SUSTAINABILITY (ACES)

Informs and advises the superintendent and school board about measures to help the school division develop and reach sustainability goals and foster an integrated series of tools and knowledge for the growth of environmental awareness. The committee meets at least quarterly.

### ATHLETIC ADVISORY COUNCIL

Serves as a forum for parents, students and school officials to share ideas and exchange information in order to further advance the quality of the athletic student experience within ACPS. The Athletic Advisory Council meets annually.

### BUDGET ADVISORY COMMITTEE

Analyzes, evaluates and advises the superintendent and division staff regarding budgeting practices and priorities from a business perspective. The committee is composed of business professionals with significant budgeting experience. The Budget Advisory Council meets three times between October and February.

### CHARTER SCHOOLS REVIEW COMMITTEE

Reviews charter school applications, conducts applicant interviews, and makes recommendations to the school board. The committee convenes upon receipt of charter school applications and meets, as necessary, to carry out the responsibilities designated in School Board Policy LC, *Albemarle County Charter Schools*.

### CLASSIFIED EMPLOYEE ADVISORY COMMITTEE

Provides a two-way forum for classified employees to have input regarding potential employee policy creation and/or changes and to bring forward employee issues that could not be successfully addressed through existing channels. The Classified Employee Advisory Committee meets bi-monthly.

### COUNTY STUDENT ADVISORY COUNCIL

Represents the opinions of students in an advisory capacity to the school board. Council members aim to better share and exchange ideas and solutions to common problems across schools and work to better the school system and the surrounding community. The County Student Advisory Council meets monthly.

### EQUITY & DIVERSITY ADVISORY COMMITTEE

Advises the division on adopting and modifying policies and practices to address equity and opportunity gaps to improve student achievement. Committee members serve two-year terms. The Equity & Diversity Advisory Council meets monthly.



CECILIA BURKE (ABOVE)  
JOURNEY

EVANGELINE HOWARD (LEFT)  
BROWNSVILLE

### LONG-RANGE PLANNING ADVISORY COMMITTEE (LRPAC)

Informs and advises the superintendent and school board in the development of comprehensive, long-term plans for facilities needs in the most effective and efficient way and in support of the school division's strategic plan. LRPAC meets monthly.

### PARENT COUNCIL

Serves as a forum for parents, educators and school officials to share ideas and exchange information in order to further advance the quality of the public education system within Albemarle County. Parent Council meets monthly.

### SCHOOL HEALTH ADVISORY BOARD (SHAB)

Assists with developing health policy in the division and evaluating the status of school health, health education, the school environment, and health services. SHAB meets quarterly, but also by special session at the request of the superintendent or school board.

### SPECIAL EDUCATION ADVISORY COMMITTEE (SEAC)

Comprised of parents of students who require special education services, educators in the field, and community members who have an interest in special education. The committee provides advice concerning the needs of children with disabilities receiving special education services and assists in the formulation and development of long-range plans for these children. SEAC meets monthly.

### TALENT DEVELOPMENT ADVISORY COMMITTEE

Oversees the implementation of the *Local Plan for the Education of the Gifted*, including participating in the biennial review and revision of the Local Plan and reporting to the school board through the superintendent about the needs of gifted learners in our county. The Talent Development Advisory Committee (formerly the Gifted Advisory Committee) meets quarterly.

### TEACHER ADVISORY COMMITTEE (TAC)

Group of teachers, including a representative from each school, who meet with central staff to discuss items of interest to teachers and give feedback on county initiatives and programs. TAC meets monthly for nine months of the school year.

### TITLE I PARENT ADVISORY

Provides feedback and suggestions for ways Albemarle County can improve our Title I program. The Title I Parent Advisory meets semi-annually.



## OUTREACH

One of the main goals of ACPS is to ensure that our community stays informed about the goings-on within the division. We use many channels to send information to parents, staff and students.



JULIA CARTWRIGHT / SCOTTSVILLE

### OPT IN TO TEXT MESSAGES FROM ACPS!

Would you like to begin receiving text messages from Albemarle County Public Schools? You can opt in to text messaging at any time by sending the word "Yes" to the short code 87569. Once you opt in, you will receive a confirmation message from BrightArrow, our mass messaging system.

*Please note: To receive text messages, your mobile phone number must also be listed as one of your child's electronic notification system contact numbers. If you need to update your contact preferences, please call your child's school.*

### ACPS WEBSITE

An essential communications tool, the Albemarle County Public Schools website helps the division meet the diverse communication needs of our school communities and increases opportunities for meaningful engagement. Our website supports mobile-first design and meets accessibility requirements of the Americans with Disabilities Act (ADA). Find our website at [k12albemarle.org](http://k12albemarle.org).

### CONNECTIONS: DIVISION NEWSLETTER

Our monthly newsletter, *Connections*, is a way to connect with our community on a monthly basis and share positive and important news with our stakeholders. Designed to be visually pleasing and dynamic, *Connections* is sent to all staff, parents and secondary students on the last Friday of each month.



*Connections* contains a short message from the superintendent each month, a parent perspective on current events in the division, upcoming events and opportunities, and much more!

### PORTRAITS OF A DIVISION

Our Portraits of a Division aim to highlight the amazing staff and students we know are scattered all throughout our division. We post two types of features here: Portrait of an ACPS Student, which highlights students from across our division, and Portrait of an ACPS Staff Member, which highlights our amazing employees.



### SOCIAL MEDIA

The division virtually shares information and collaborates with our community and larger audiences through multiple social media channels, including Facebook, Twitter and YouTube. Social media posts may include text, photos and/or videos.



### VIDEOS

Video is just one way the Communications team works with schools and departments across the division to promote the work we are doing in our division to facilitate high-quality teaching and learning. Members of the public can visit our ACPS Videos page to watch a featured video and preview other recent videos. All ACPS videos are available through our YouTube channel.

### ¡OPTAR POR LA MENSAJERÍA DE TEXTO!

¿Le gustaría comenzar a recibir mensajes de texto de las Escuelas Públicas del Condado de Albemarle? Puede optar por recibir mensajes de texto en cualquier momento enviando la palabra "Sí" al código corto 87569. Una vez que se haya suscrito, recibirá un mensaje de confirmación de BrightArrow, nuestro sistema de mensajería masiva.

Tenga en cuenta: Para recibir mensajes de texto, su número de teléfono móvil también debe figurar como uno de los números de contacto del sistema de notificación electrónica de su hijo. Si necesita actualizar sus preferencias de contacto, comuníquese con la escuela de su hijo.



# 2022-23 CALENDAR-AT-A-GLANCE

## JULY 2022

S	M	T	W	T	F	S
					1	2
3	4	5	6	7	8	9
10	11	12	13	14	15	16
17	18	19	20	21	22	23
24	25	26	27	28	29	30
31						

## AUGUST

S	M	T	W	T	F	S
	1	2	3	4	5	6
7	8	9	10	11	12	13
14	15	16	17	18	19	20
21	22	23	24	25	26	27
28	29	30	31			

## SEPTEMBER

S	M	T	W	T	F	S
				1	2	3
4	5	6	7	8	9	10
11	12	13	14	15	16	17
18	19	20	21	22	23	24
25	26	27	28	29	30	

## OCTOBER

S	M	T	W	T	F	S
						1
2	3	4	5	6	7	8
9	10	11	12	13	14	15
16	17	18	19	20	21	22
23	24	25	26	27	28	29
30	31					

## NOVEMBER

S	M	T	W	T	F	S
		1	2	3	4	5
6	7	8	9	10	11	12
13	14	15	16	17	18	19
20	21	22	23	24	25	26
27	28	29	30			

## DECEMBER

S	M	T	W	T	F	S
				1	2	3
4	5	6	7	8	9	10
11	12	13	14	15	16	17
18	19	20	21	22	23	24
25	26	27	28	29	30	31

## JANUARY 2023

S	M	T	W	T	F	S
1	2	3	4	5	6	7
8	9	10	11	12	13	14
15	16	17	18	19	20	21
22	23	24	25	26	27	28
29	30	31				

## FEBRUARY

S	M	T	W	T	F	S
			1	2	3	4
5	6	7	8	9	10	11
12	13	14	15	16	17	18
19	20	21	22	23	24	25
26	27	28				

## MARCH

S	M	T	W	T	F	S
			1	2	3	4
5	6	7	8	9	10	11
12	13	14	15	16	17	18
19	20	21	22	23	24	25
26	27	28	29	30	31	

## APRIL

S	M	T	W	T	F	S
						1
2	3	4	5	6	7	8
9	10	11	12	13	14	15
16	17	18	19	20	21	22
23	24	25	26	27	28	29
30						

## MAY

S	M	T	W	T	F	S
	1	2	3	4	5	6
7	8	9	10	11	12	13
14	15	16	17	18	19	20
21	22	23	24	25	26	27
28	29	30	31			

## JUNE

S	M	T	W	T	F	S
				1	2	3
4	5	6	7	8	9	10
11	12	13	14	15	16	17
18	19	20	21	22	23	24
25	26	27	28	29	30	

Quarter 1 = 44 days  
 Quarter 2 = 43 days  
 Quarter 3 = 45 days  
 Quarter 4 = 43 days

*Calendar approved January 13, 2022, and updated in July 2022. Dates subject to change due to inclement weather. Visit our Calendars web page for the most up-to-date information.*



## CALENDAR KEY

- Holiday: July 4; Sept 5; Nov 23-25; Dec 19-30; Jan 2, 16; April 3-7; May 29; June 19
- New Teacher Academy: Aug 9-12
- Combination Teacher Workday/Professional Development (PD) Day: Aug 15, 17, 18, 22, 23
- Full day of PD (no school for students): Aug 16, 19; Nov 7
- First day of school for students: Aug 24
- First half of day reserved for Division Professional Learning Community (PLC) meetings; second half of day reserved for PD (no school for students): Sept 26
- End of Quarter: Oct 26; Jan 20; March 30; June 9
- First half of day reserved for Division PLC meetings; second half of day reserved for Teacher Workday (no school for students): Oct 27; Jan 24; Feb 20; March 17; April 28
- Teacher Workday (no school for students): Oct 28; Jan 23; March 31; June 12
- Reserved for Parent Conferences (no school for students): Nov 8
- Students will learn in person for first half of day; second half of day reserved for Teacher Workday: June 9
- Last day of school for students (half-day in person): June 9
- Last day of work for teachers: June 12

**Note:** If schools close an unusually high number of days due to inclement weather, one or more teacher workdays in the spring may be converted to instructional days.



**CONNECT  
WITH US!**



[k12albemarle.org](http://k12albemarle.org)



Albemarle County Public Schools  
401 McIntire Road, 3rd Floor  
Charlottesville, VA 22902-4596

NON-PROFIT ORG.

U.S. POSTAGE

**PAID**

CHARLOTTESVILLE, VA  
PERMIT NO. 216



CHLOE ROOT / COMMUNITY LAB SCHOOL

**WORK WITH US!**

Looking to work in a school division where you can make a real impact on students' lives and receive incredible professional growth opportunities?

Albemarle County Public Schools seeks to hire educators and support staff who demonstrate the ability to work with culturally diverse students and who see themselves as lifelong learners — always wanting to learn new things to best meet the ever-changing needs of our students.

Visit [k12albemarle.org/employment](http://k12albemarle.org/employment) for more information on how to apply.

