



RPS 205 Organizational Chart

Revised: as of Board Date 9/27/22



Table of Contents

Superintendent

[Superintendent's Cabinet](#)

[Superintendent's Office](#)

Academics

[Director Overview](#)

[Bilingual](#)

[College & Career Readiness](#)

[Curriculum](#)

[Early Childhood](#)

[Improvement & Innovation](#)

[Special Education](#)

[Student Services](#)

Communications

[Director & Manager Overview](#)

[Communications & Family Engagement](#)

[Process Improvement](#)

[Welcome Center](#)

[Athletics & Fine Arts](#)

Diversity, Equity, and Inclusion

[Department Overview](#)

Finance

[Director Overview](#)

[Finance & Budgeting](#)

[Payroll & Purchasing](#)

Human Resources

[Director & Manager Overview](#)

[Human Resources](#)

[Talent Development](#)

[Allocations & Compliance](#)

[Benefits & Accountability](#)

Information and Technology

[Director Overview](#)

[Educational Technology](#)

[Information Services](#)

[IT/IS Security](#)

[Technology Services](#)

Operations

[Director Overview](#)

[Design & Construction](#)

[Facilities](#)

[Nutrition Services](#)

[Operations](#)

[Transportation](#)

Schools Team

[Director Overview](#)

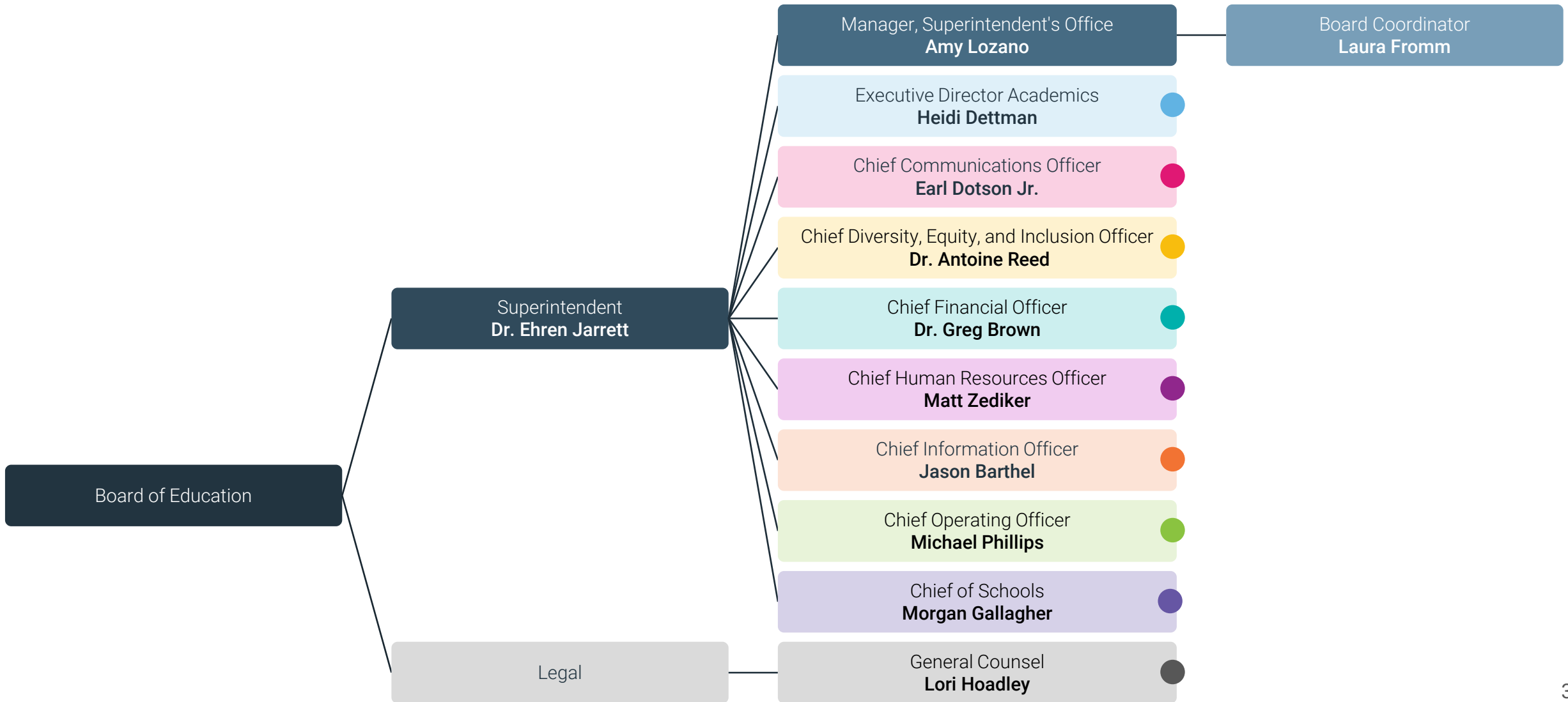
[School](#)

[Breakdowns](#)

Legal

[Department Overview](#)

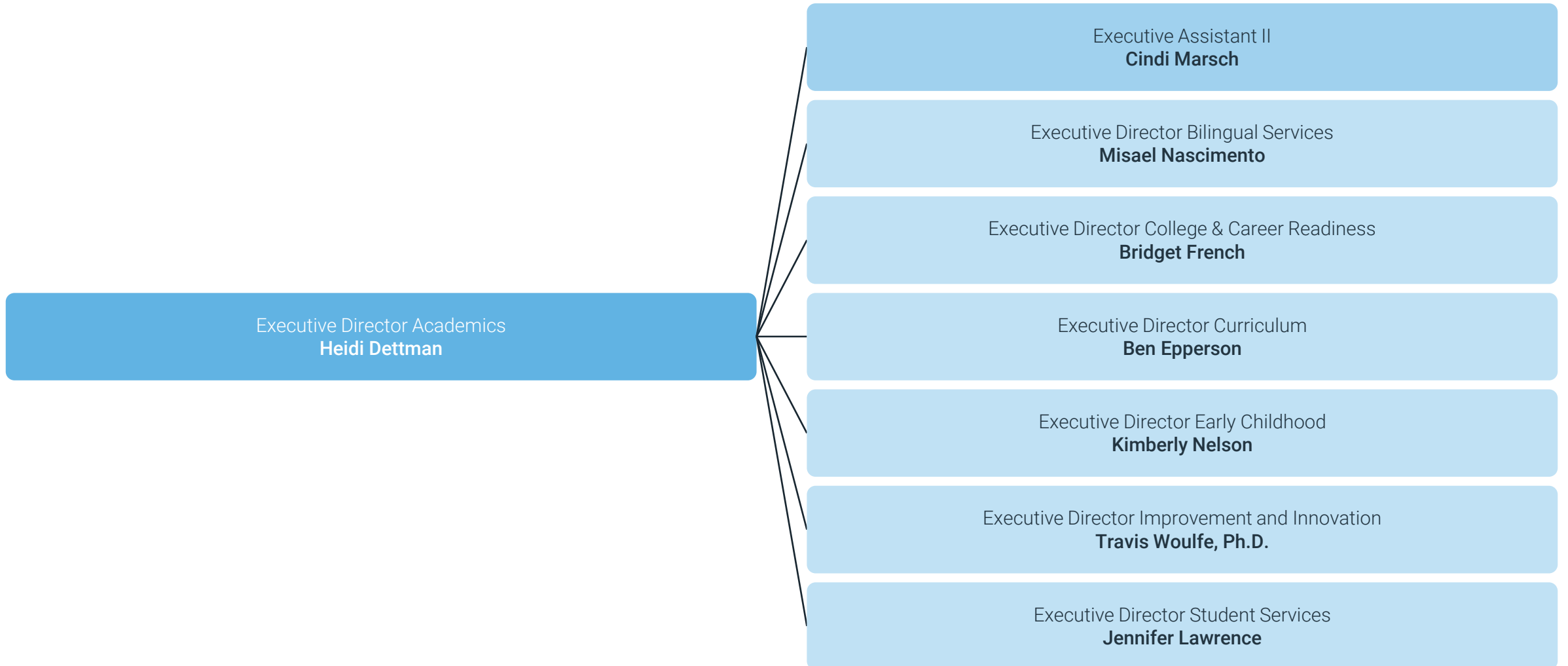
Superintendent's Cabinet



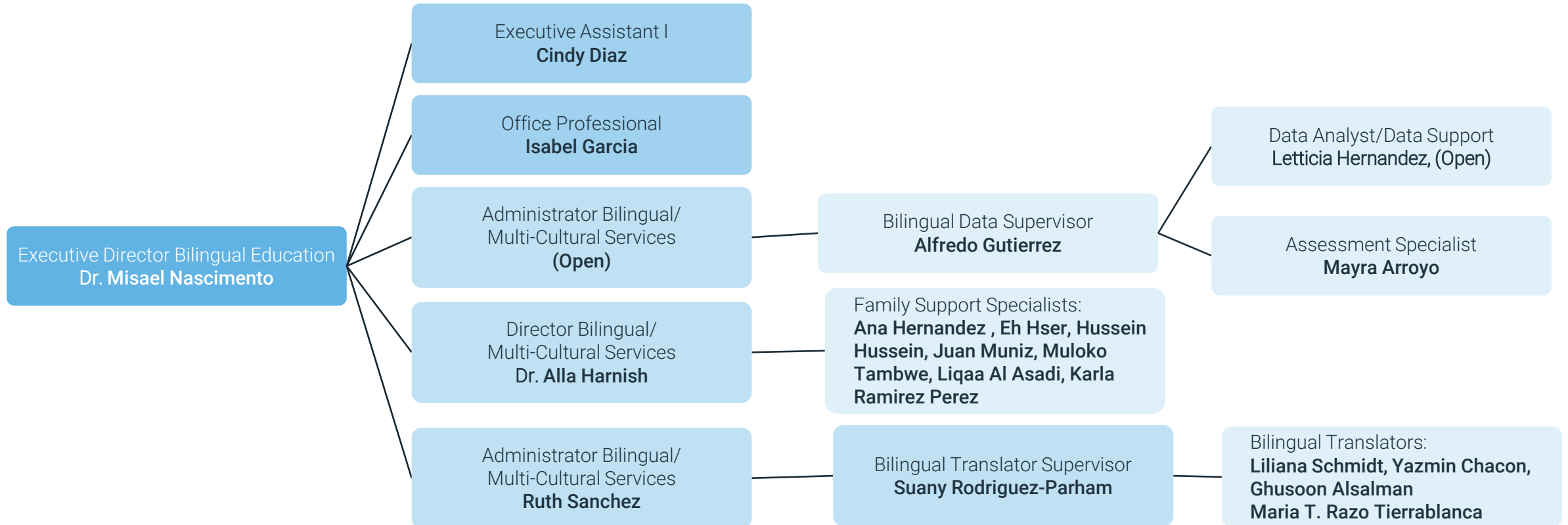
Superintendent's Office



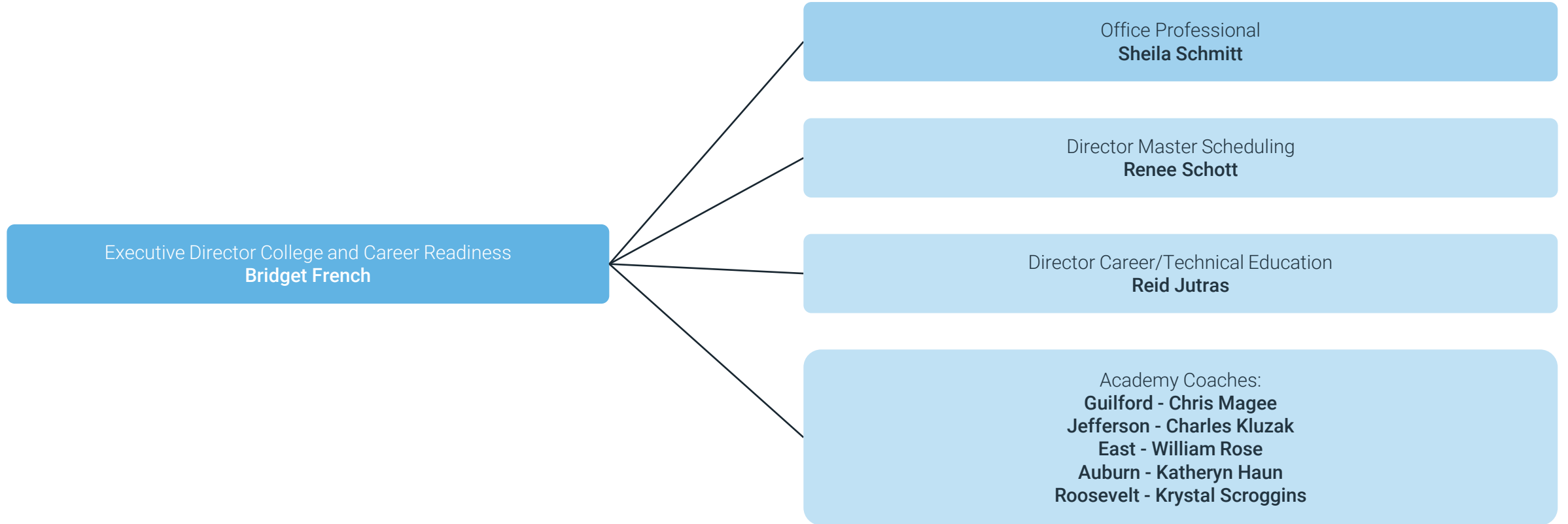
Academics: Director Overview



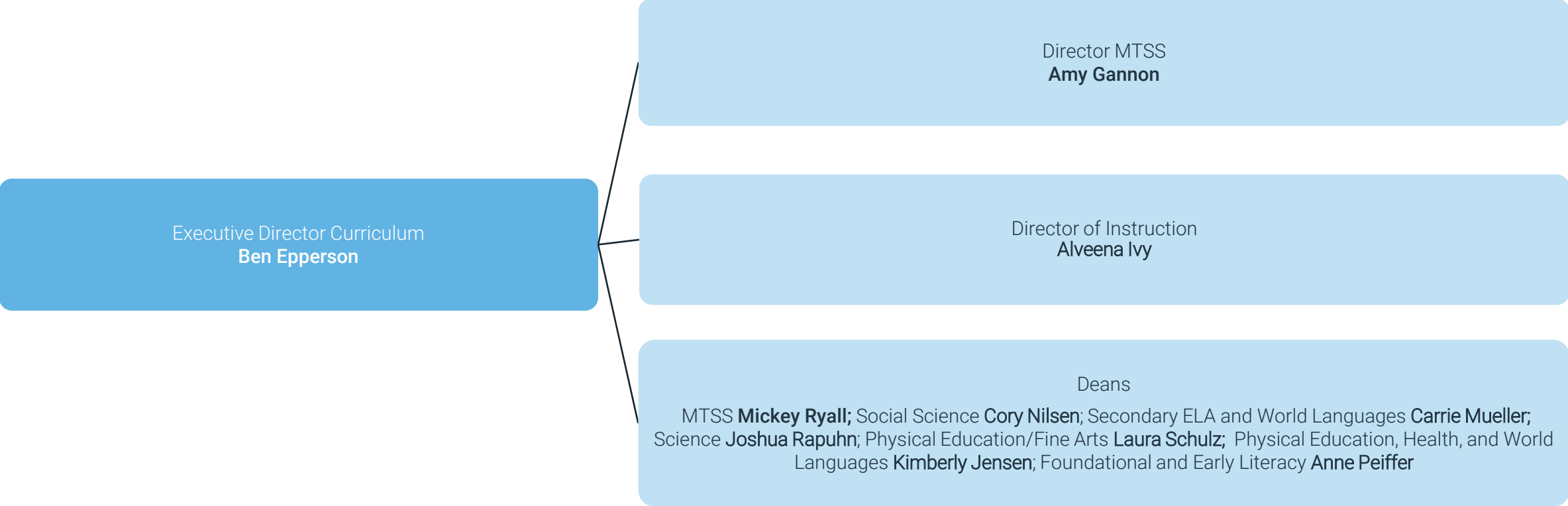
Academics: Bilingual Department



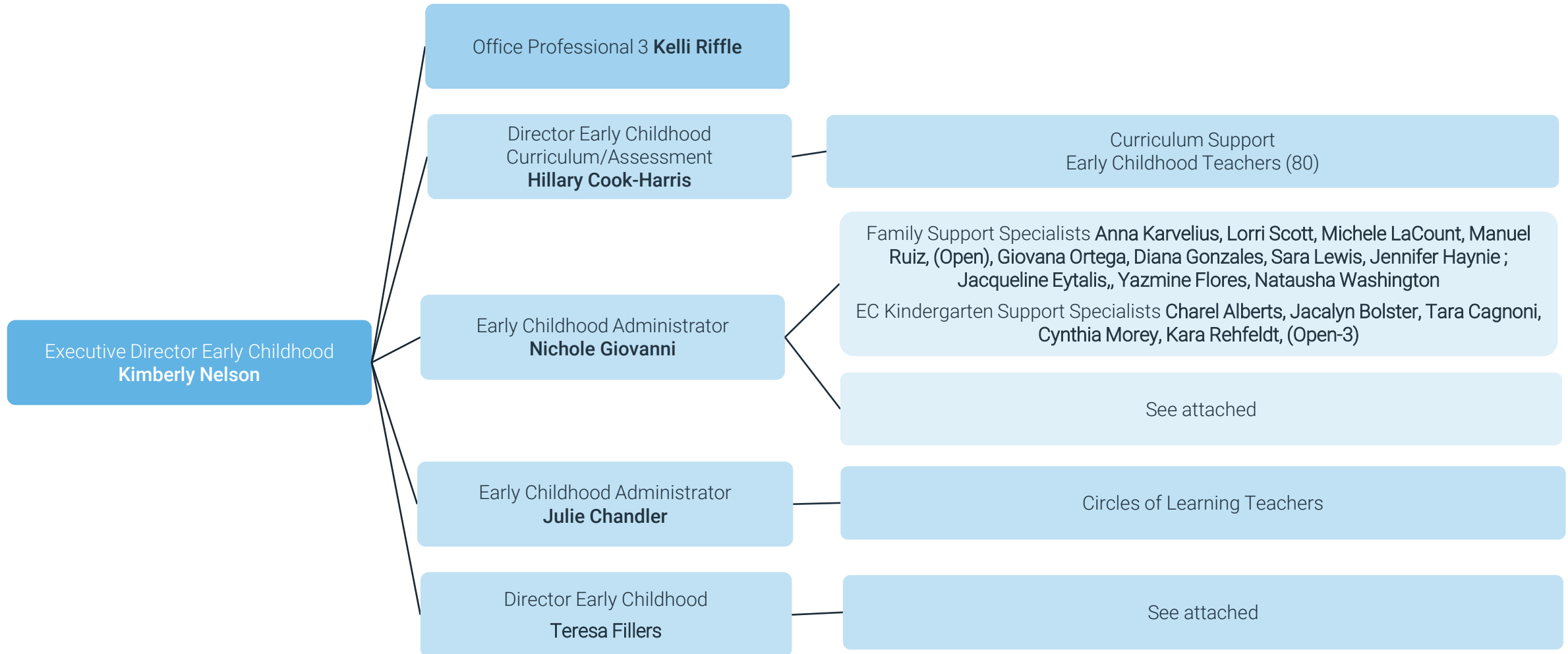
Academics: College & Career Readiness



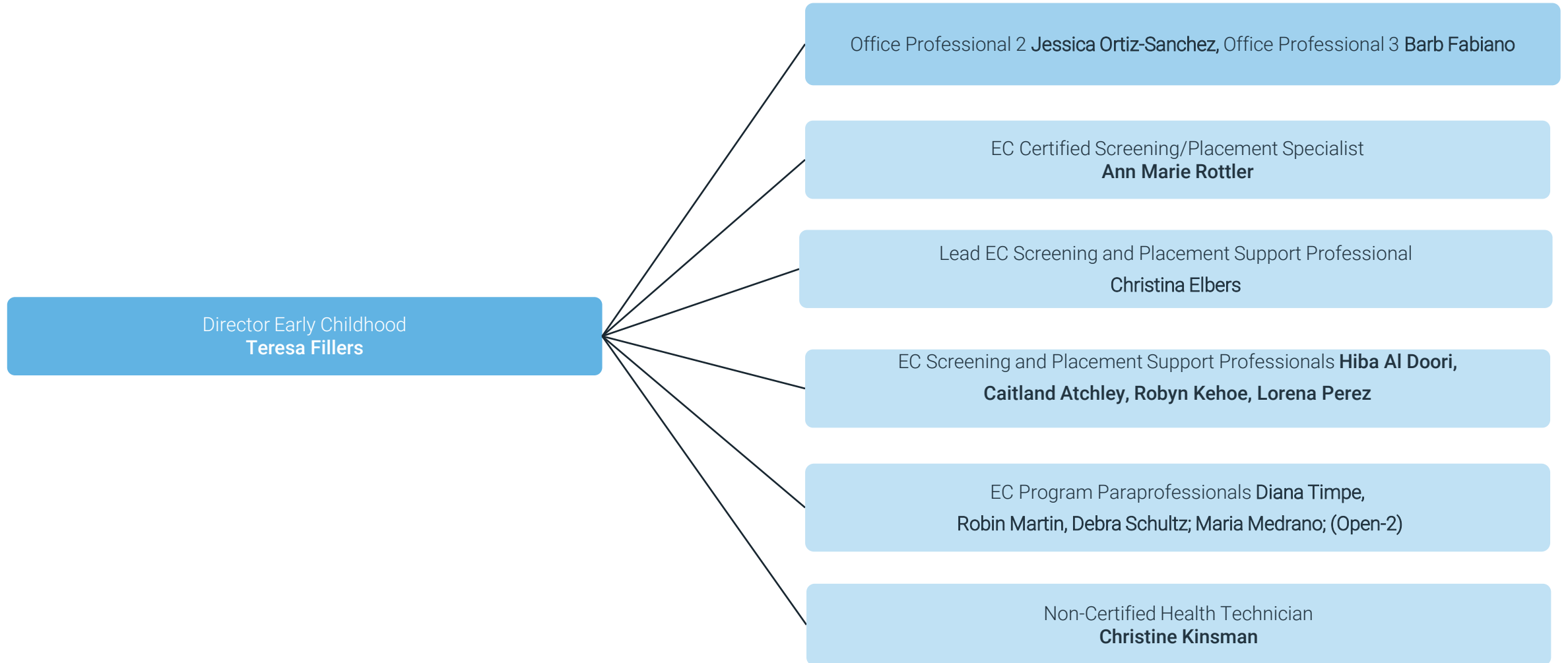
Academics: Curriculum



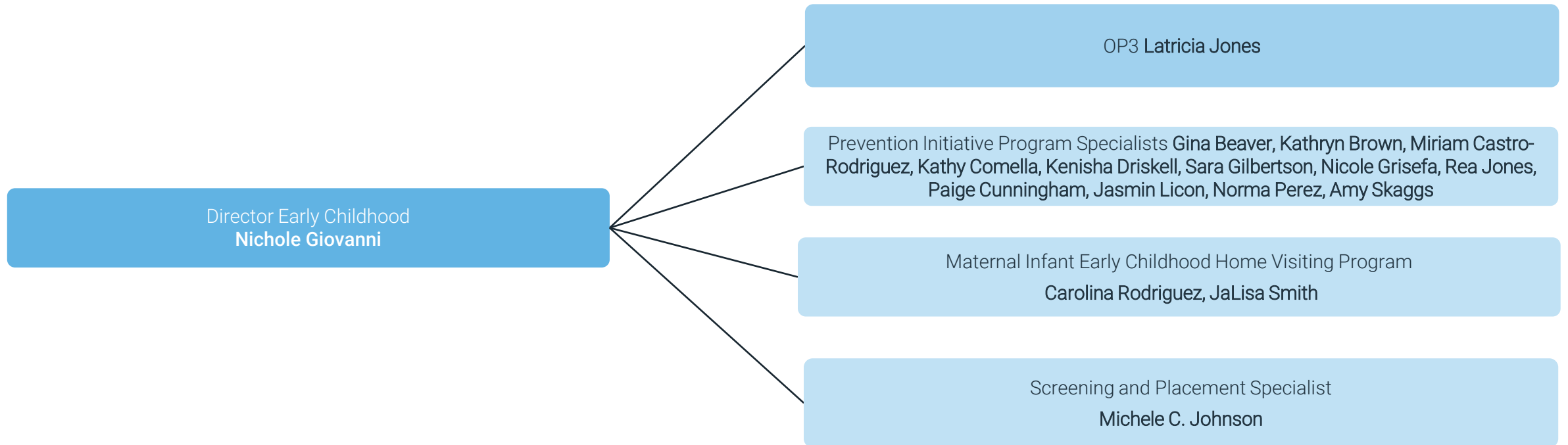
Academics: Early Childhood



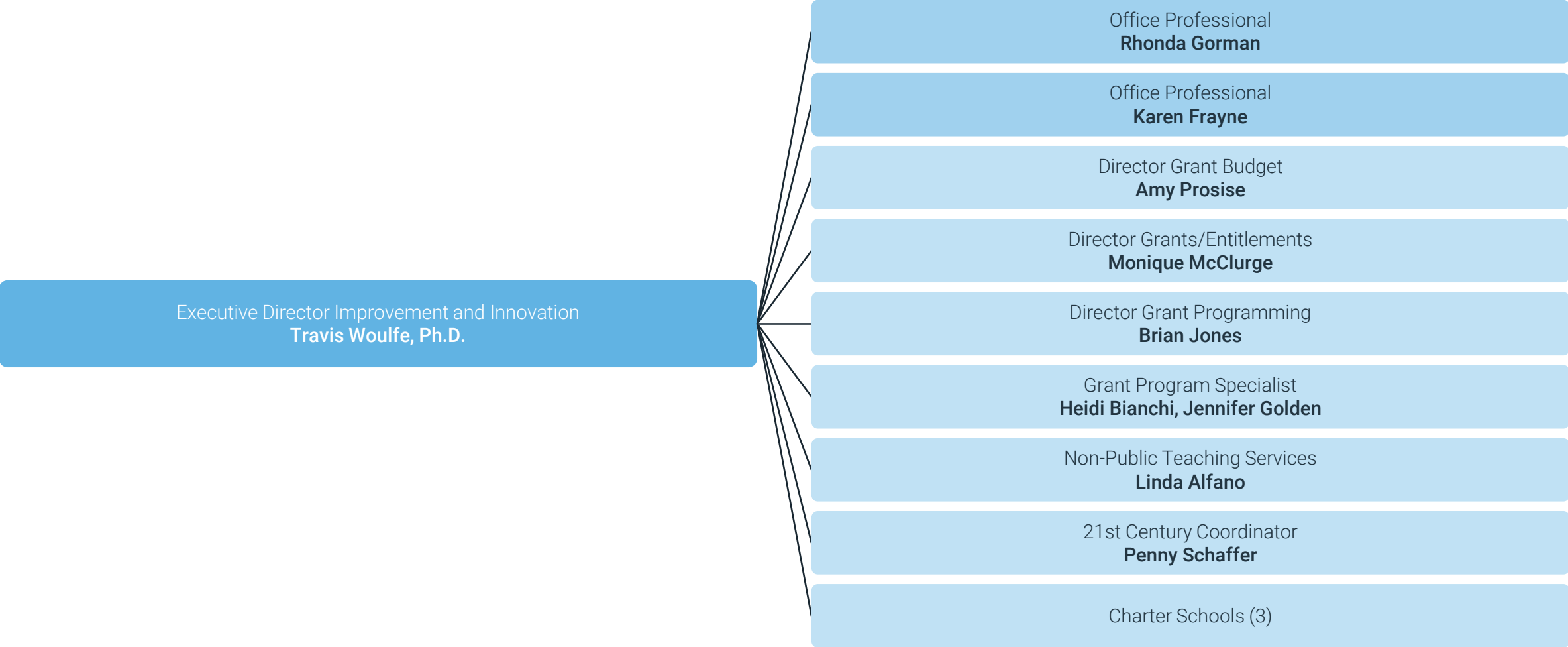
Academics: Early Childhood



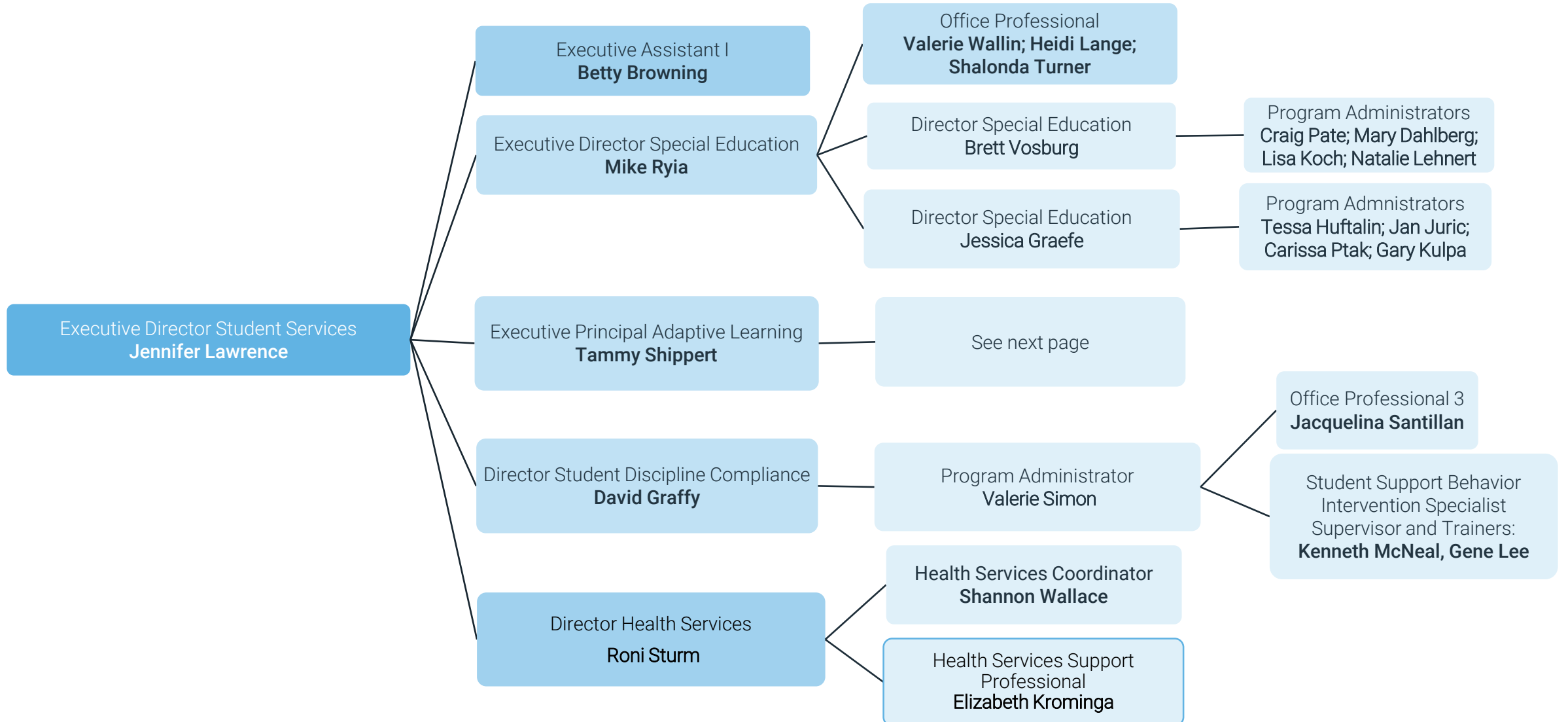
Academics: Early Childhood



Academics: Improvement & Innovation

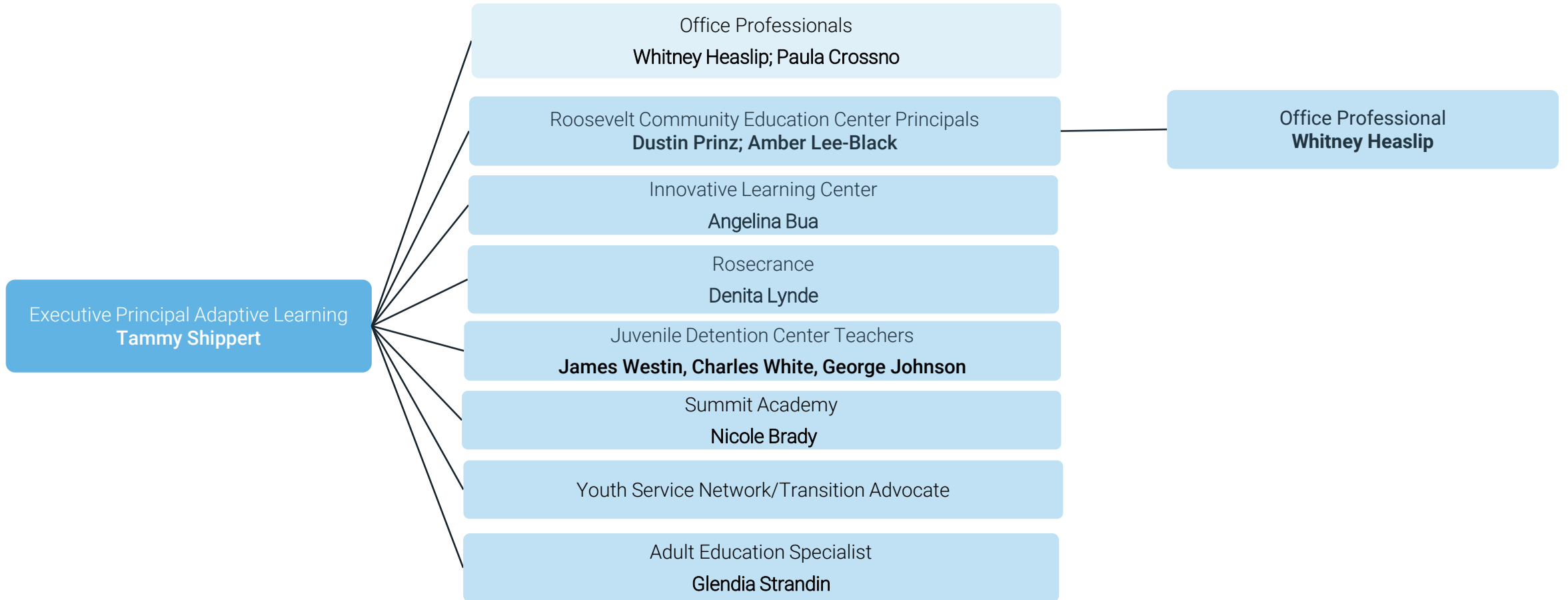


Academics: Student Services

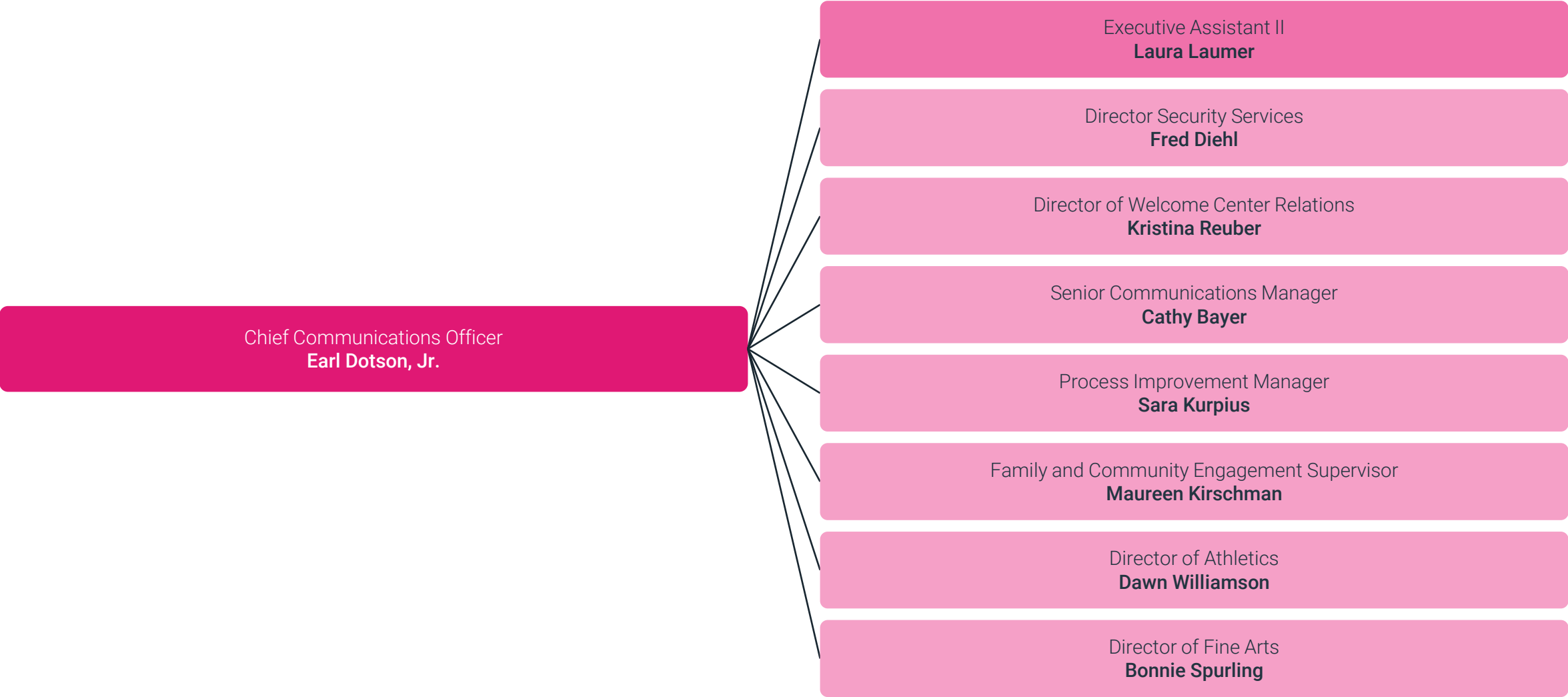


Academics: Student Services

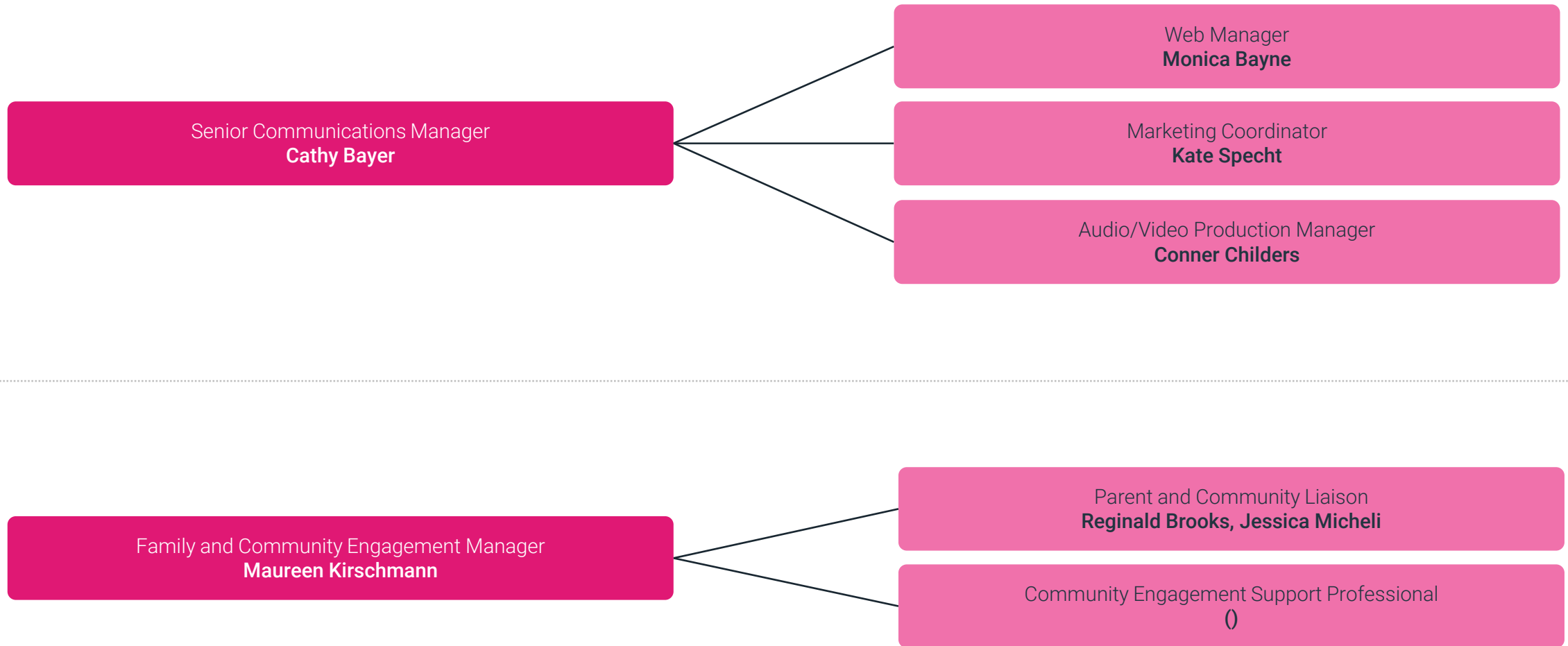
Adaptive Learning



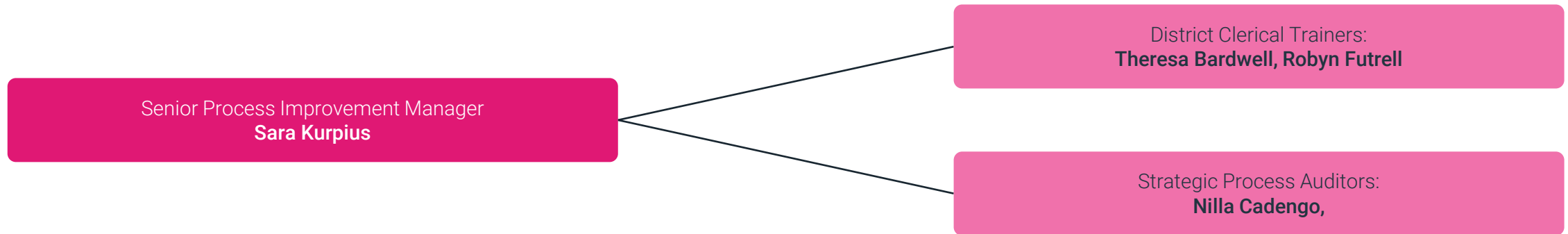
Communications Director & Manager Overview



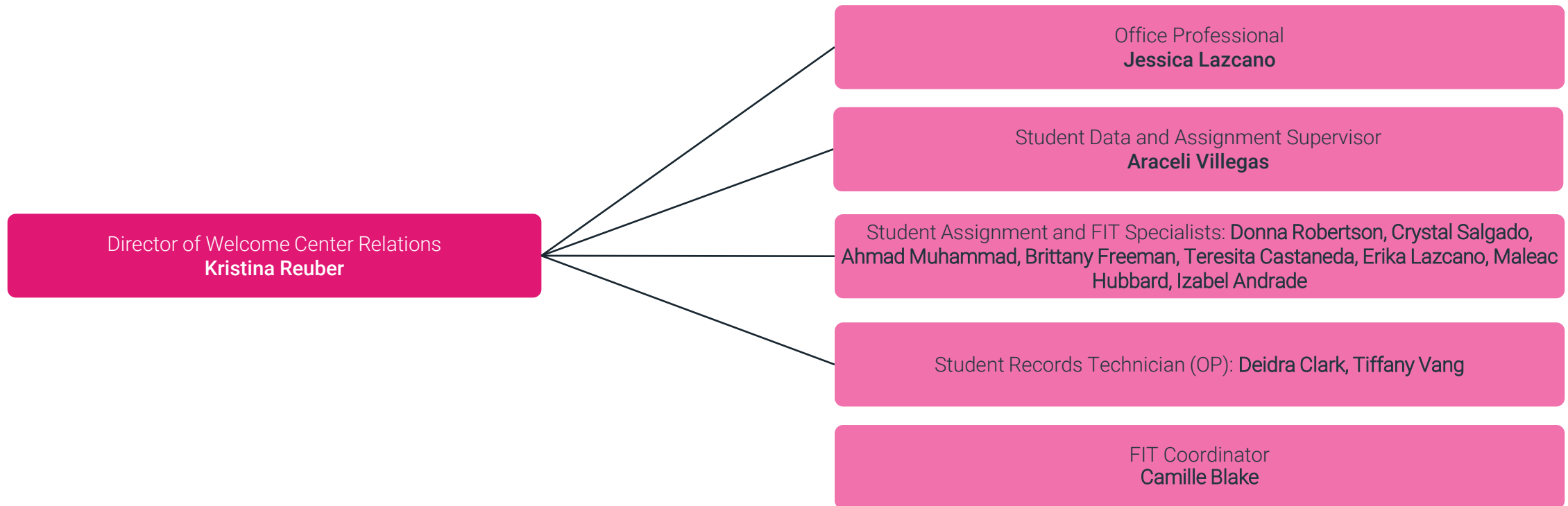
Communications & Family and Community Engagement



Process Improvement



Welcome Center



Athletics & Fine Arts

Director of Athletics
Dawn Williamson

Athletic Support Specialist
Abby Compton

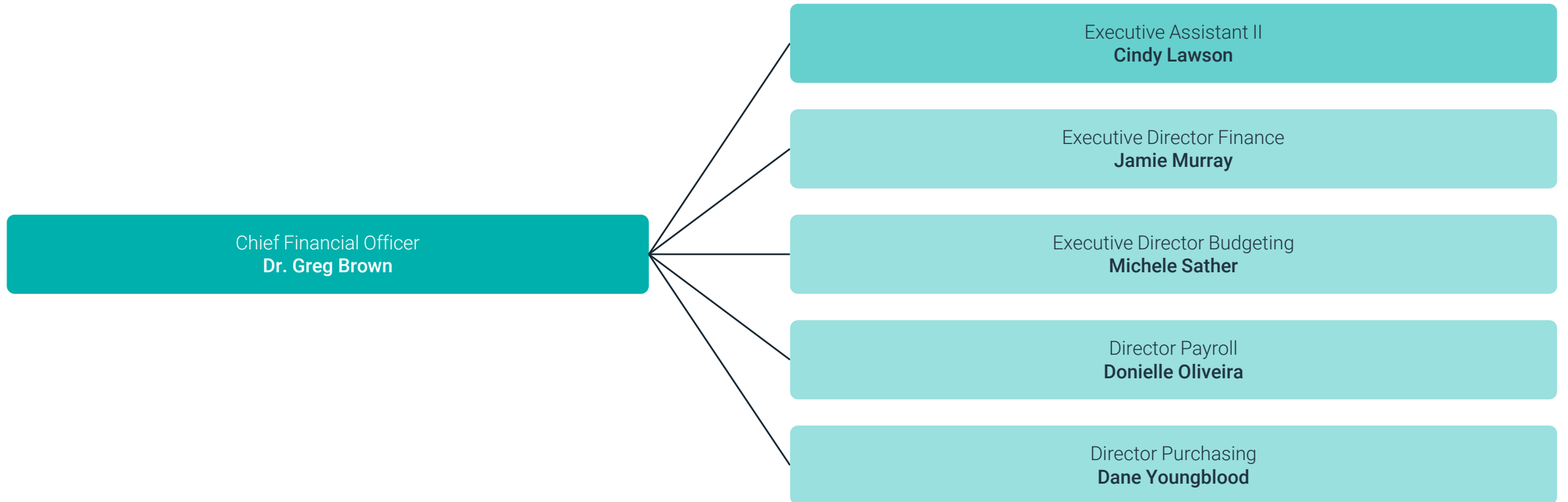
Director of Fine Arts
Bonnie Spurling

Fine Arts Specialist
Simon Davis

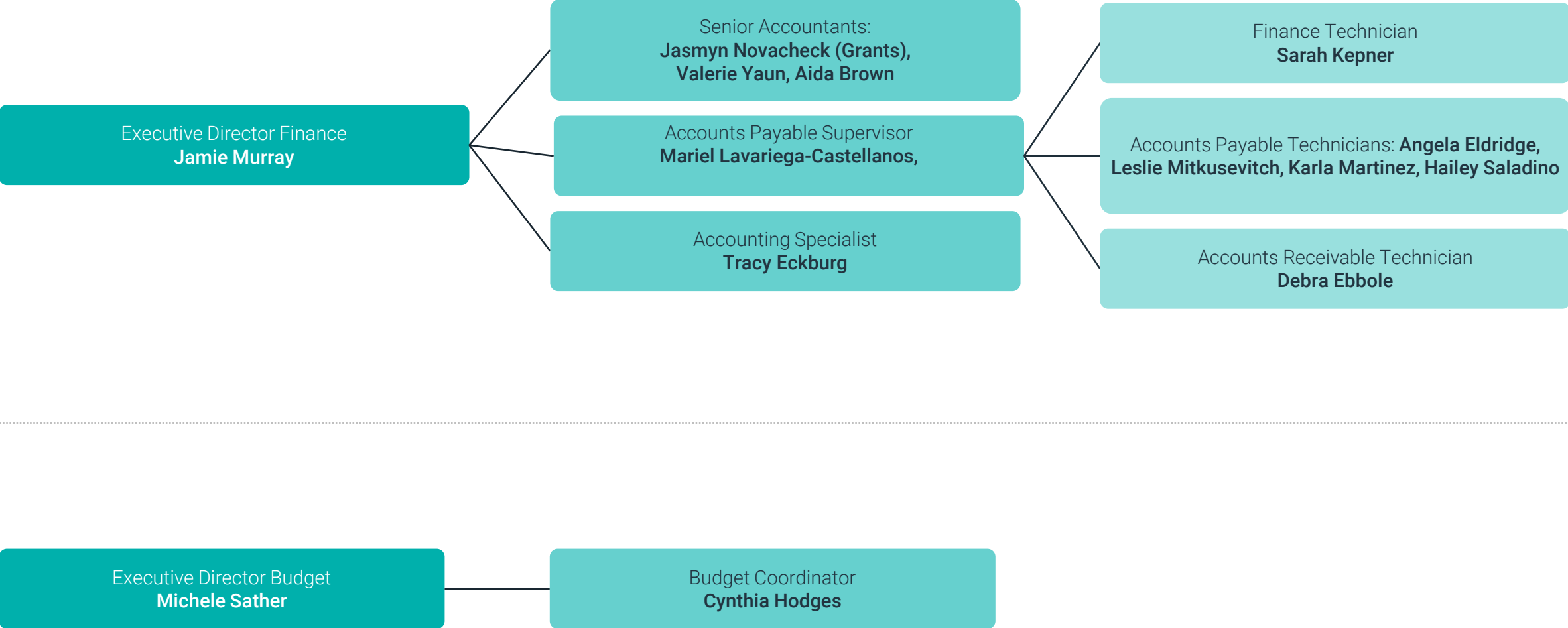
Diversity, Equity & Inclusion: Department Overview



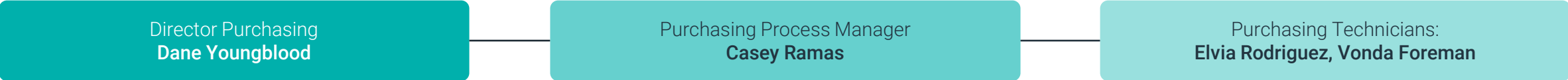
Finance: Director Overview



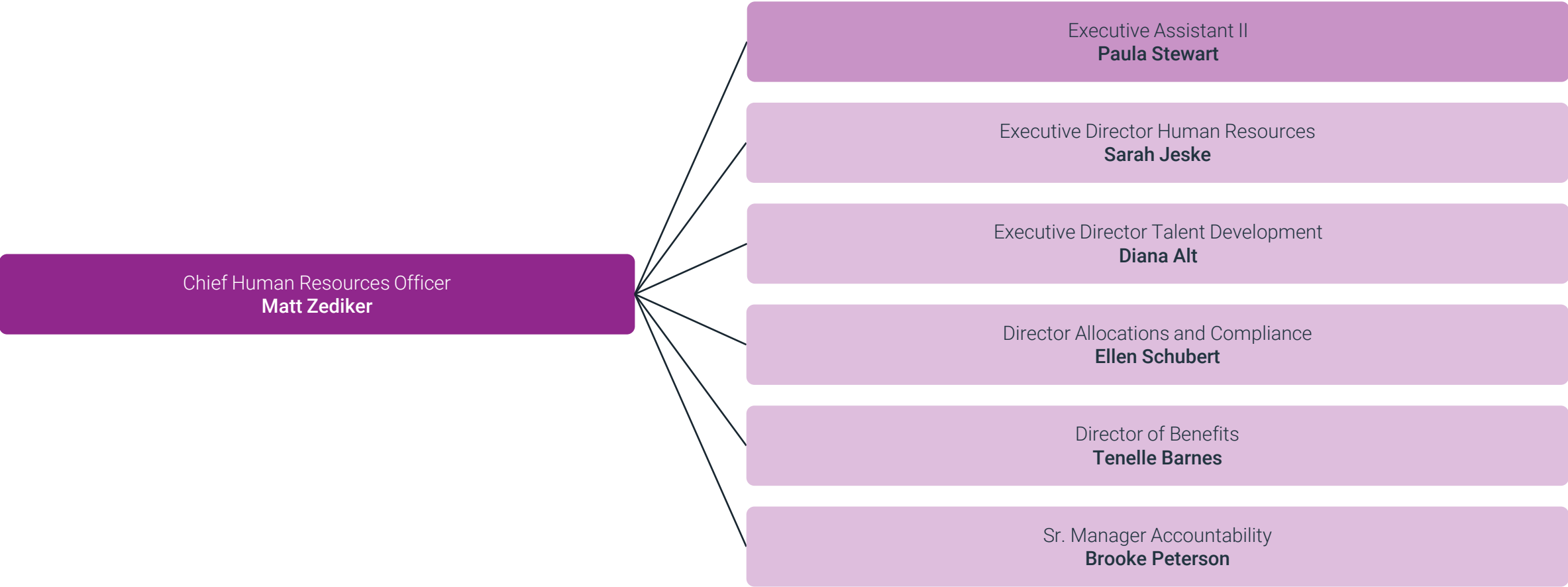
Finance & Budget



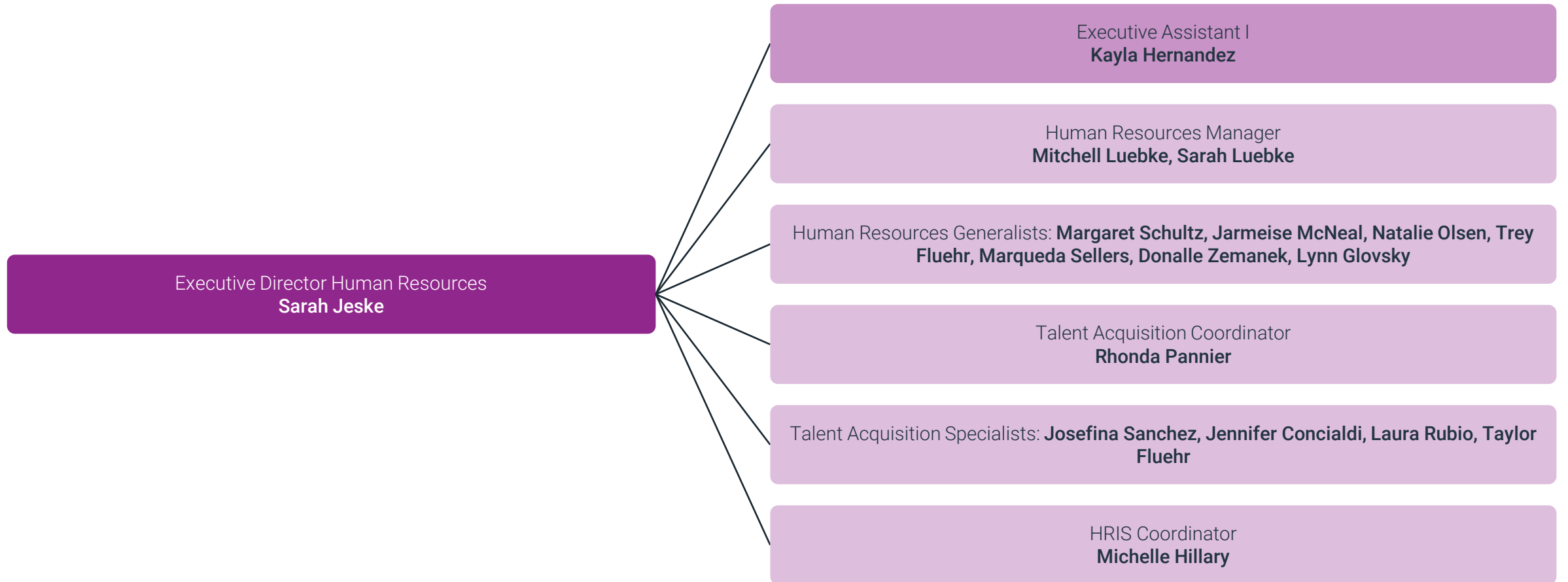
Payroll & Purchasing



Human Resources: Director & Manager Overview



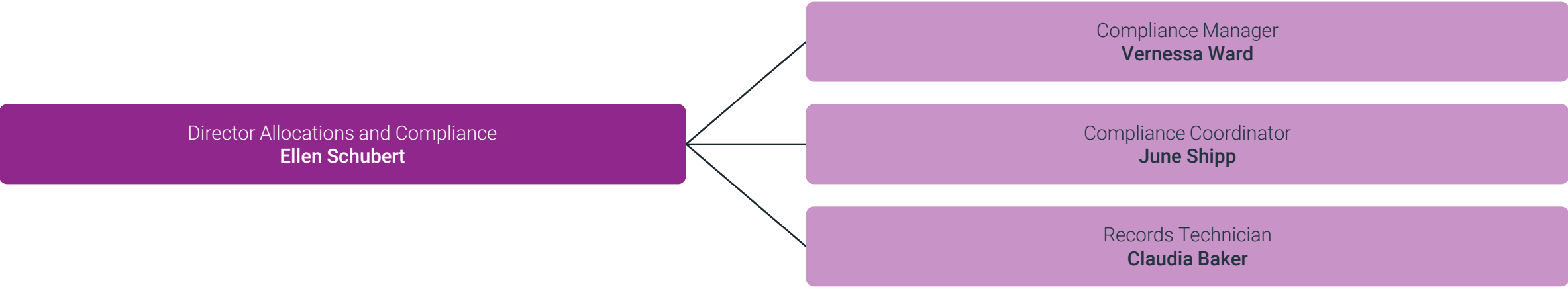
Human Resources



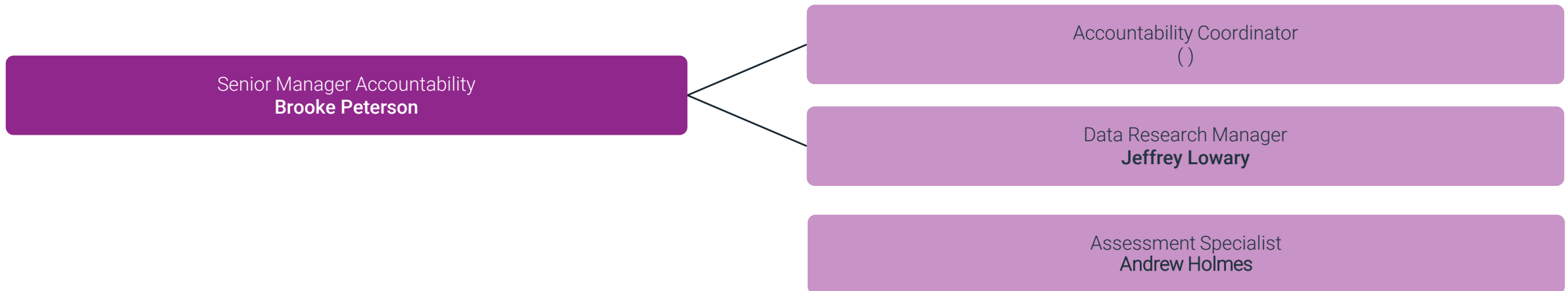
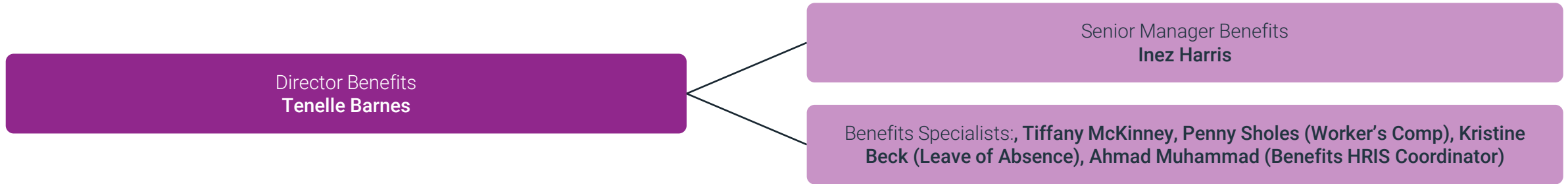
Human Resources: Talent Development



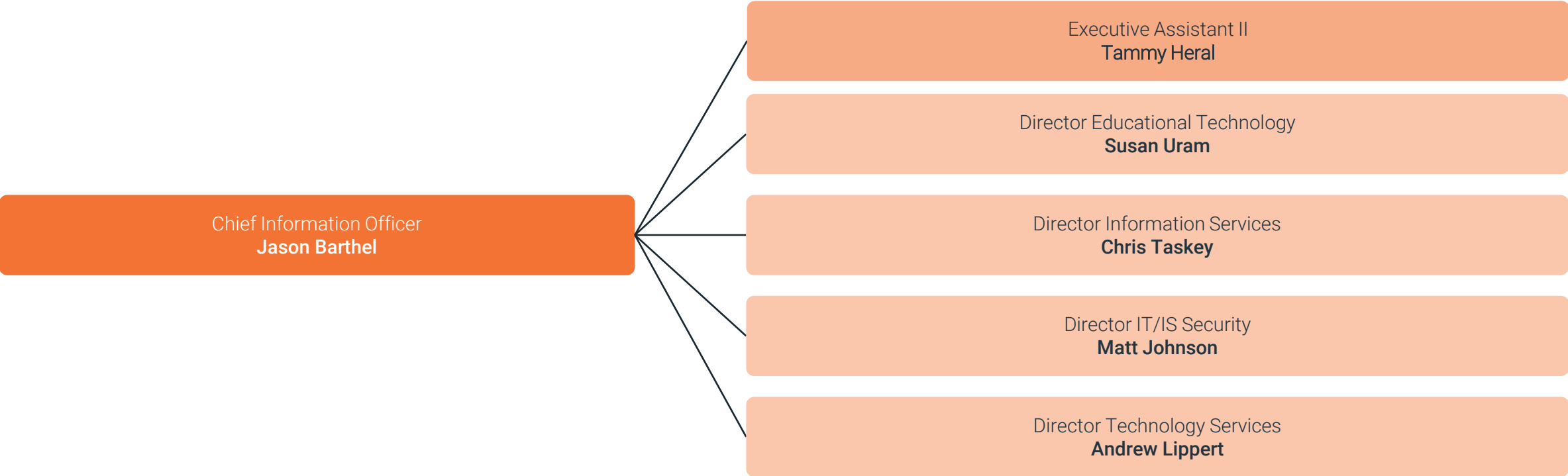
Human Resources: Allocations and Compliance



Human Resources: Benefits & Accountability



Information & Technology: Director Overview



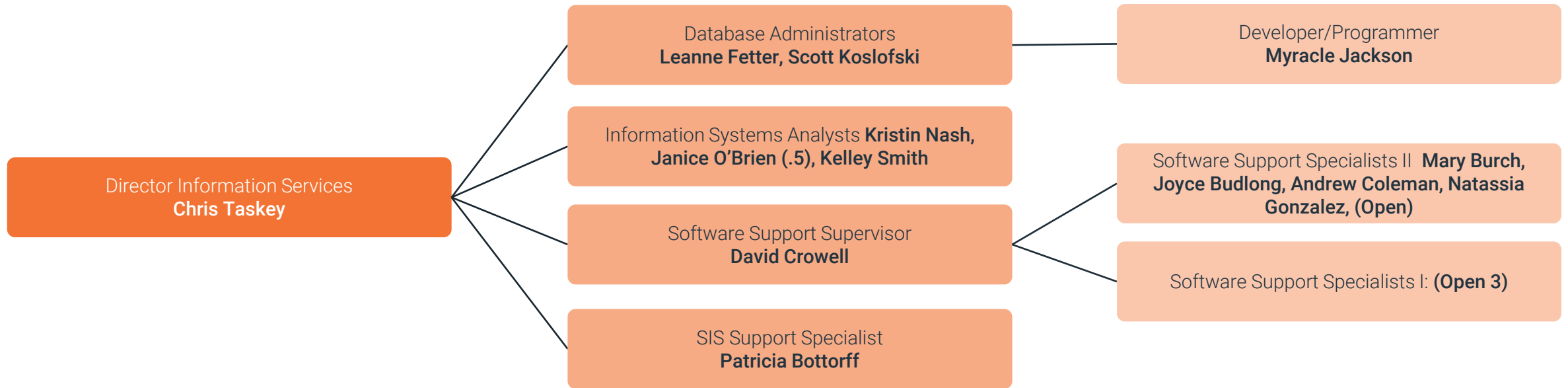
Information & Technology: Educational Technology

Director Educational Technology
Susan Uram

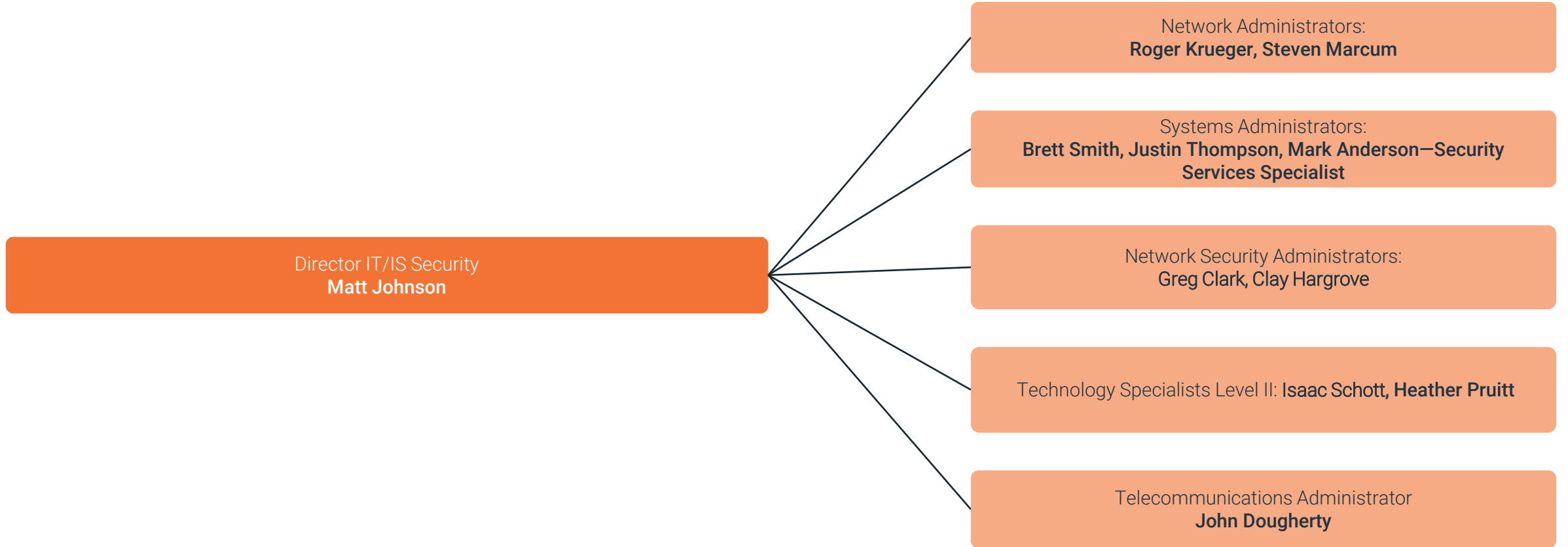
Educational Technology Innovation Instructor
Dallas Turner

Teacher Technology Support Specialists **Paige Fitton (EC), Kari Graffy (EC), Abigail Crose (EC), Tui Harned (EC), Lindsey Mason (EL), (Open EL), Jason Peters (EL), Jessica Berg (EL), Dave Bartel (EL), Julian Jacques (EL), Martin Lowenthal (EL), Bryanna Scharre (EL), Jean Johnson (EL), Sheryl Crowell (EL), Melissa Jacques (EL), Maureen Barndt (MS), Cindy Beaudry (MS), Brooke Imback (MS), Abi Krebs (MS), Carrie Goings (MS), Carol Ann Egan (MS), Taylor Grant (HS), Doug McArthur (HS), (Open) (HS), Michael Whitemore (HS)**

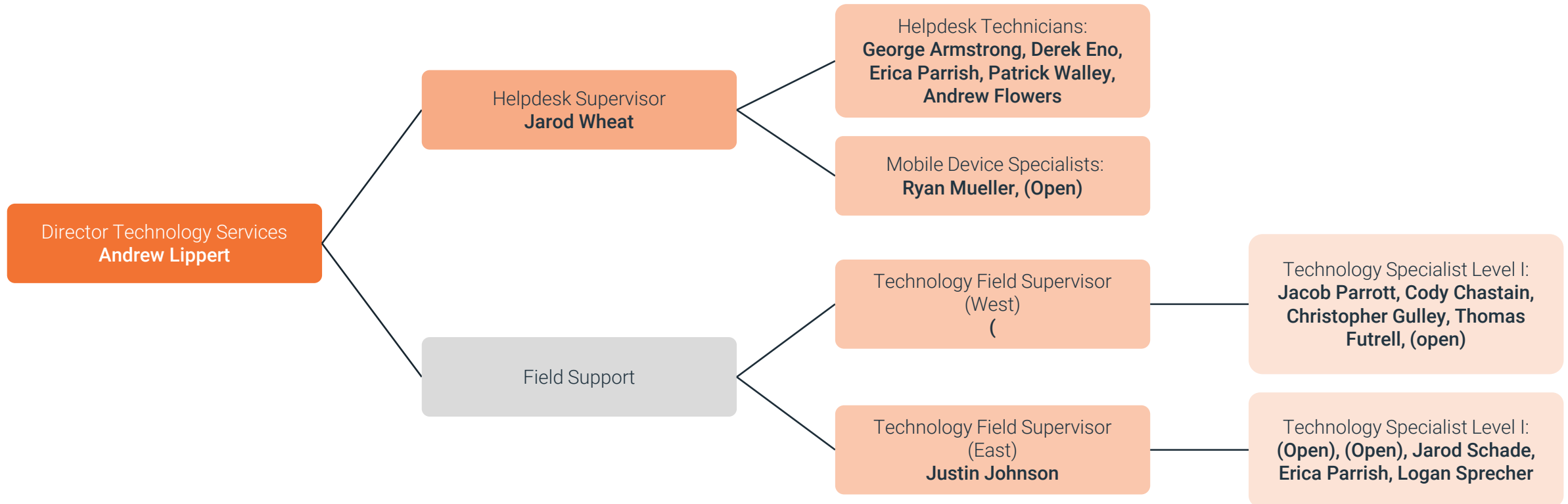
Information & Technology: Information Services



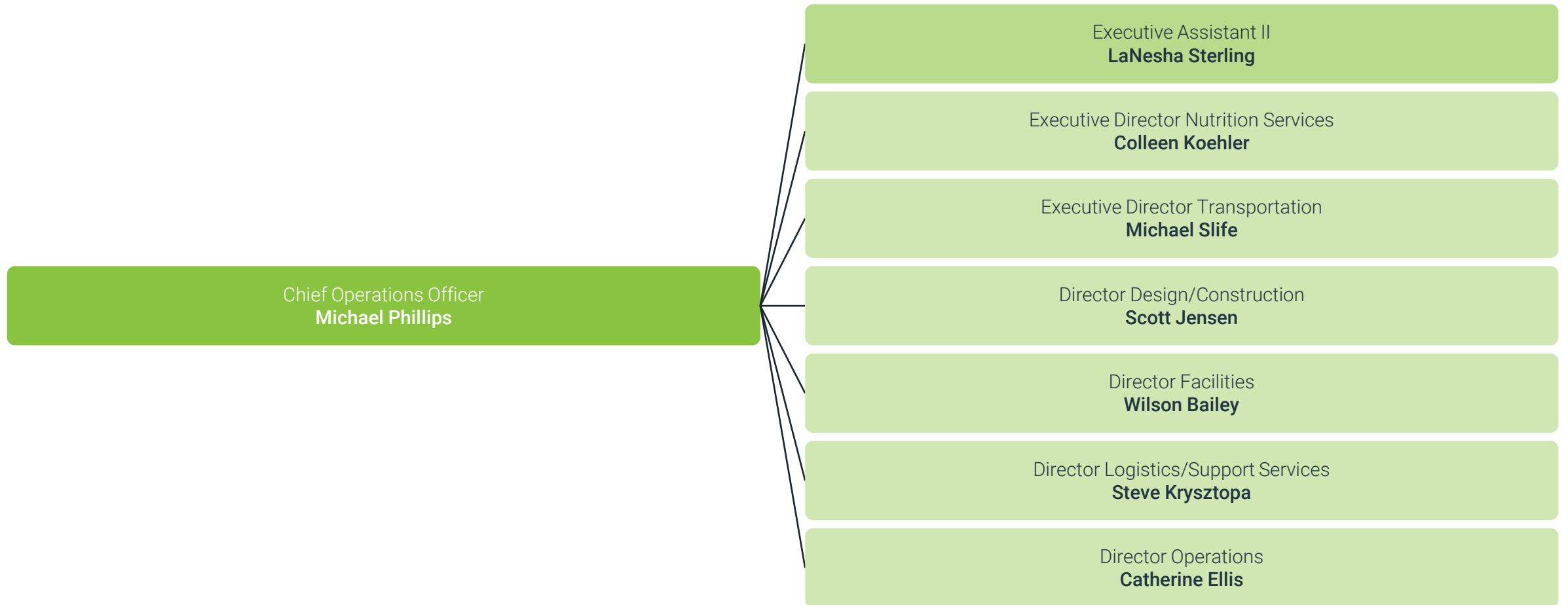
Information & Technology: IT/IS Security



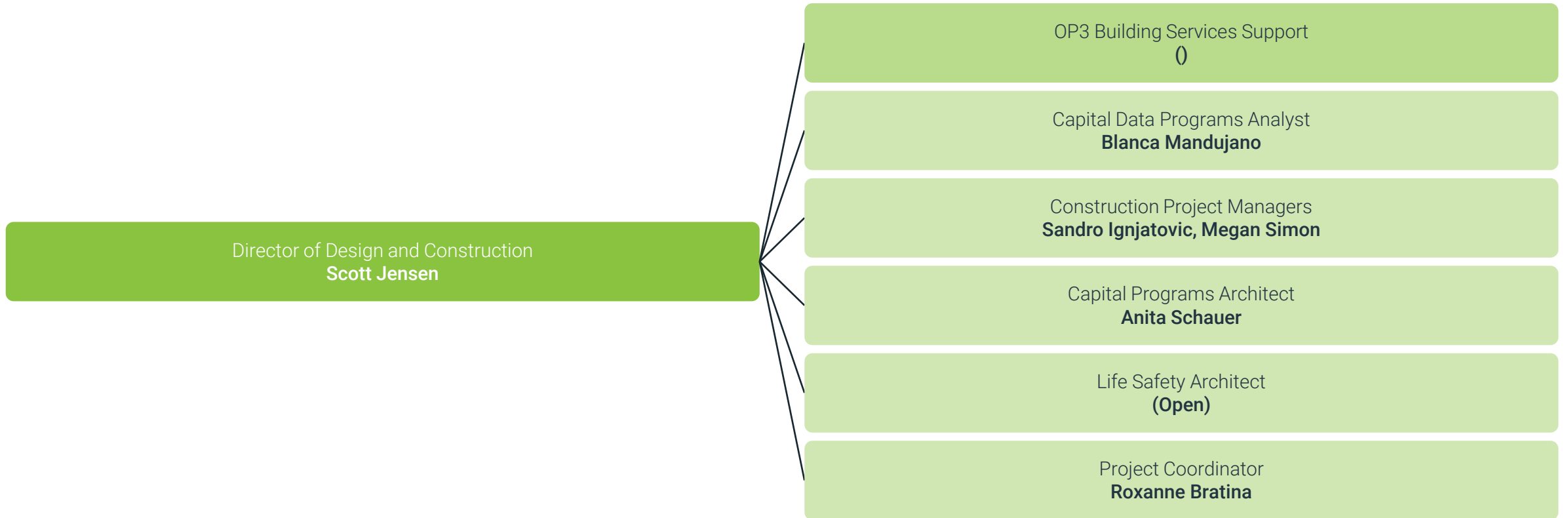
Information & Technology: Technology Services



Operations: Director Overview



Operations: Design & Construction

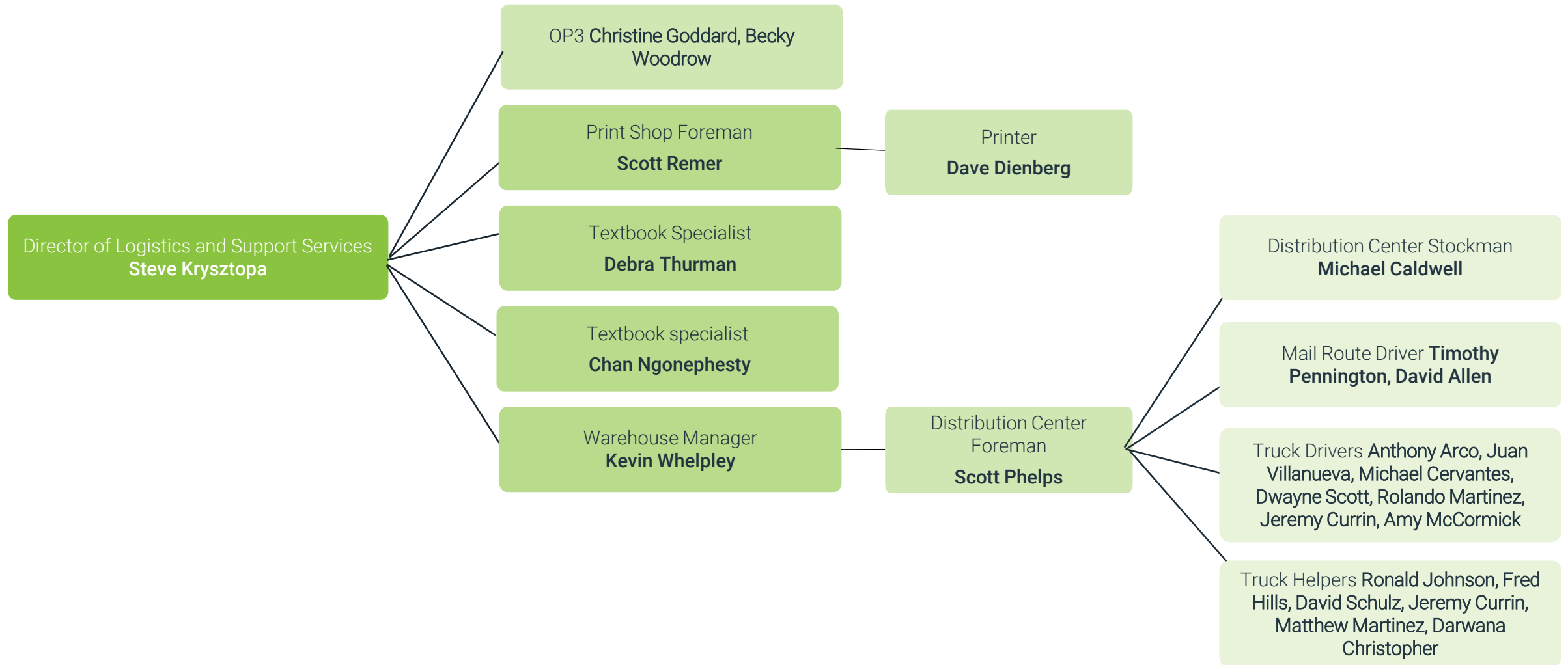


Operations: Facilities

Energy Management Technician **Matthew Houchin**



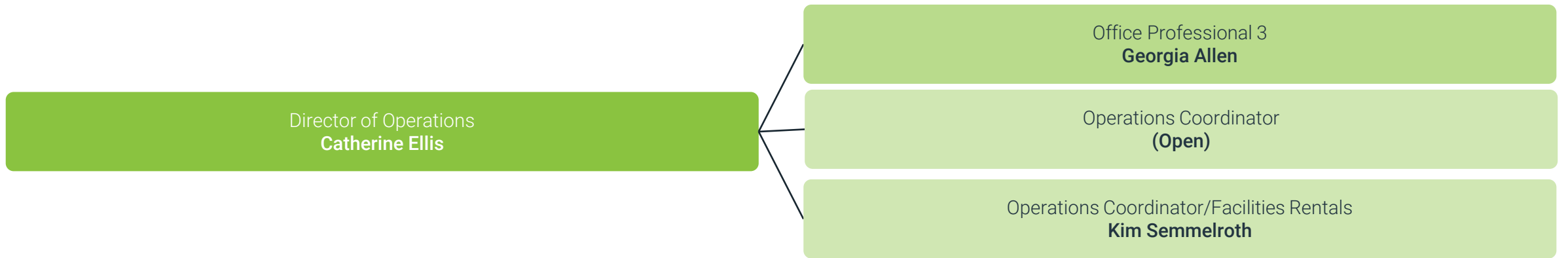
Operations: Logistics and Support Services



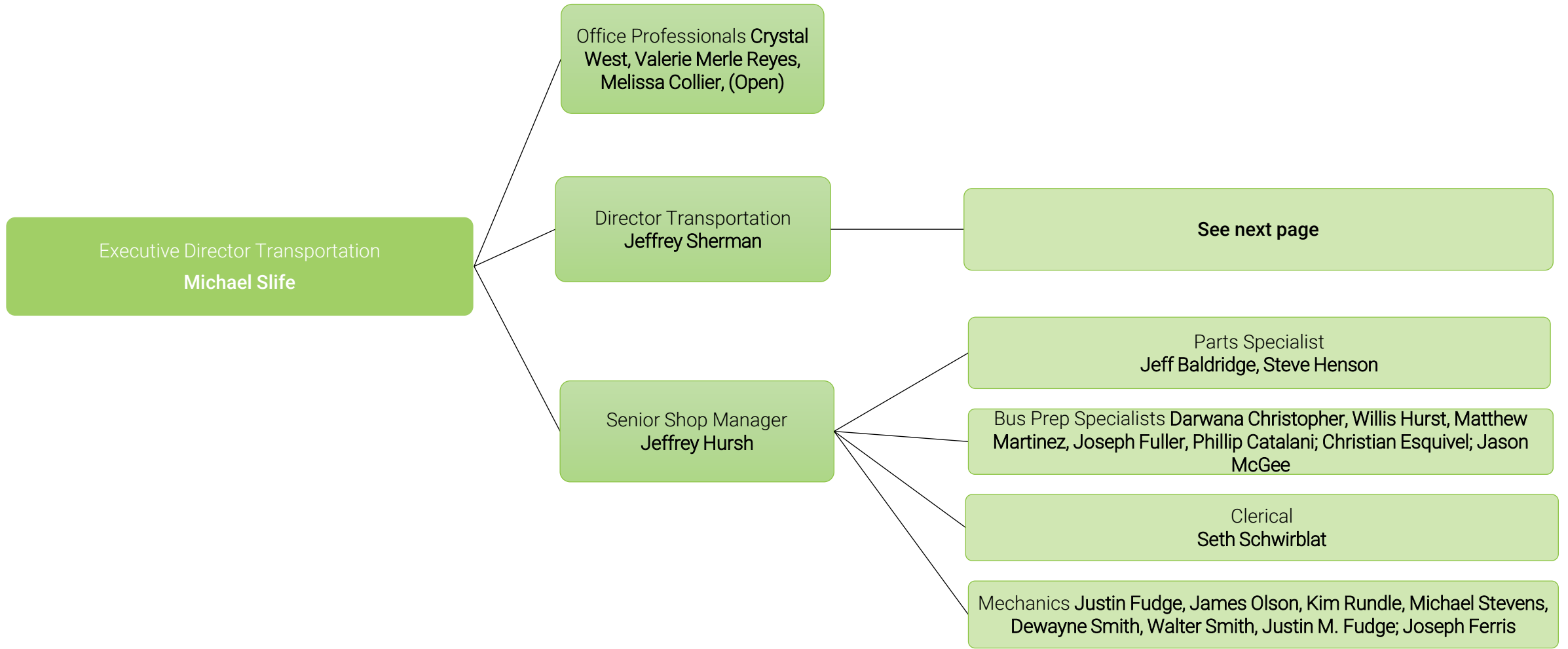
Operations: Nutrition Services



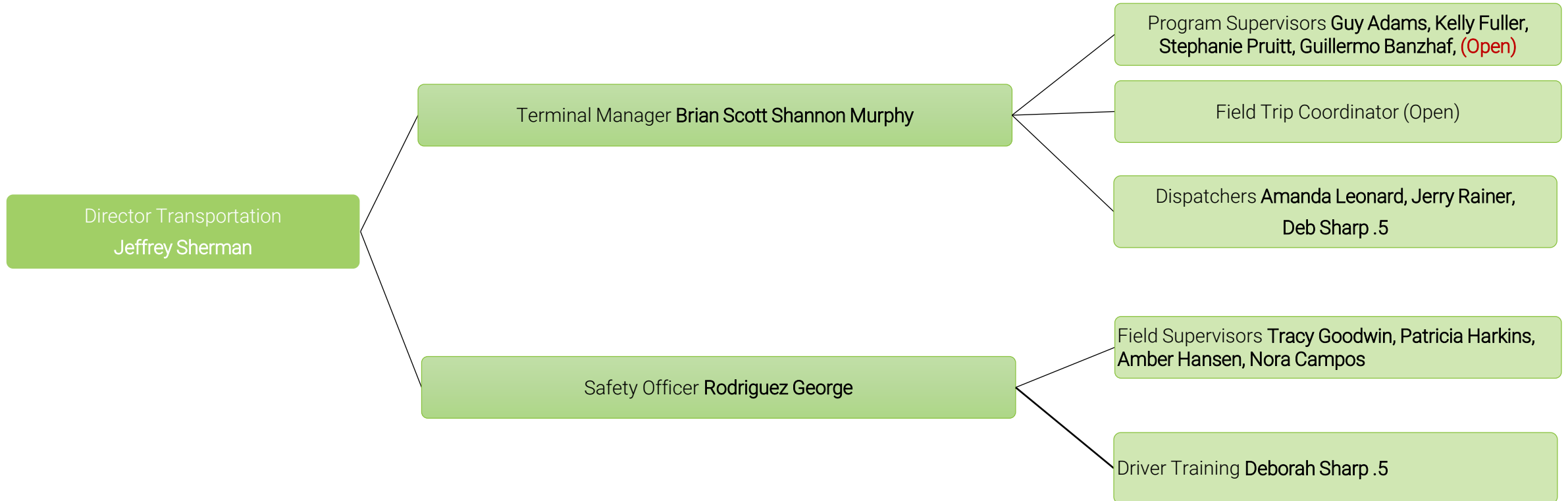
Operations



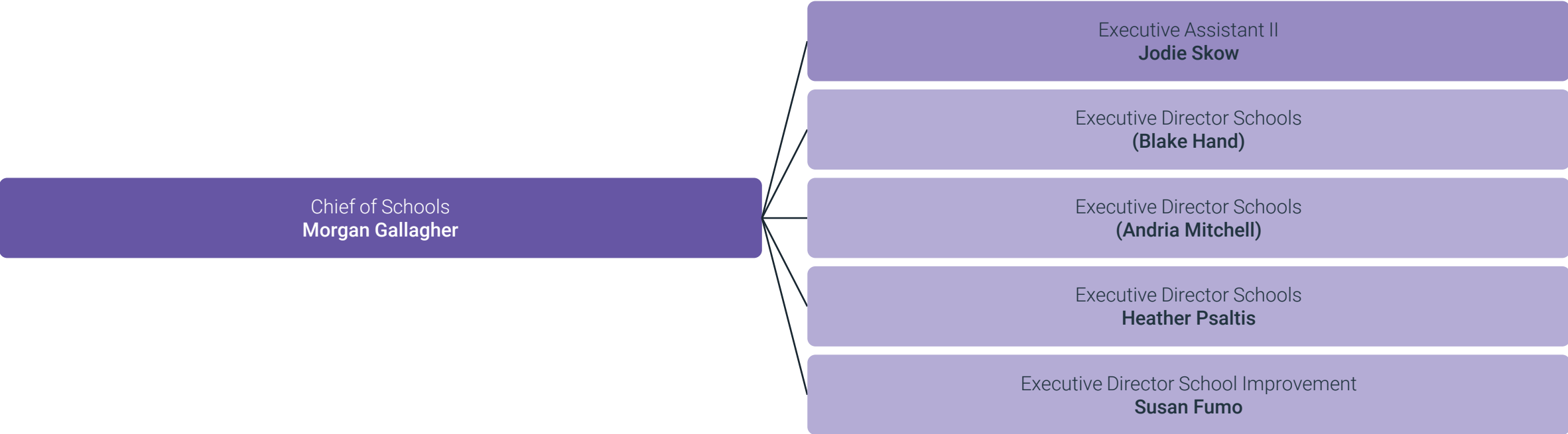
Operations: Transportation



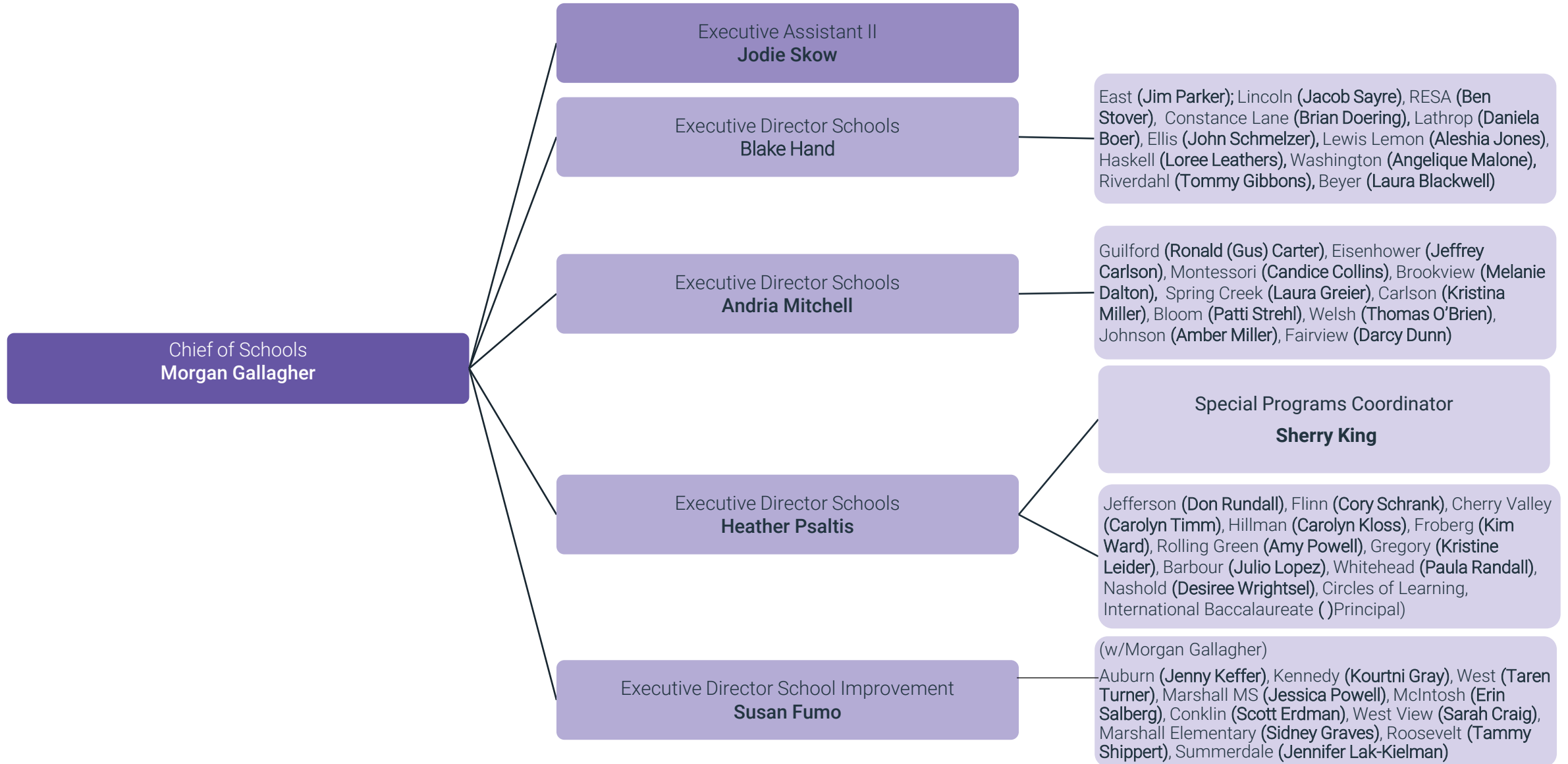
Operations: Transportation



Schools Team: Director Overview



Schools Team: School Breakdowns



Legal: Department Overview

