

Facilities, Planning and Construction

September 26, 2022



Construction Update:

- C.W. Worthington Middle School #7
- West Operations Facility – Renovations
- Carter Elementary School #21
- Daniel Elementary School #22
- Hatfield Replacement ES
- Seven Hills Replacement ES
- Northwest HS – Renovations & Additions

C.W. Worthington - Middle School #7











West Operations Facility

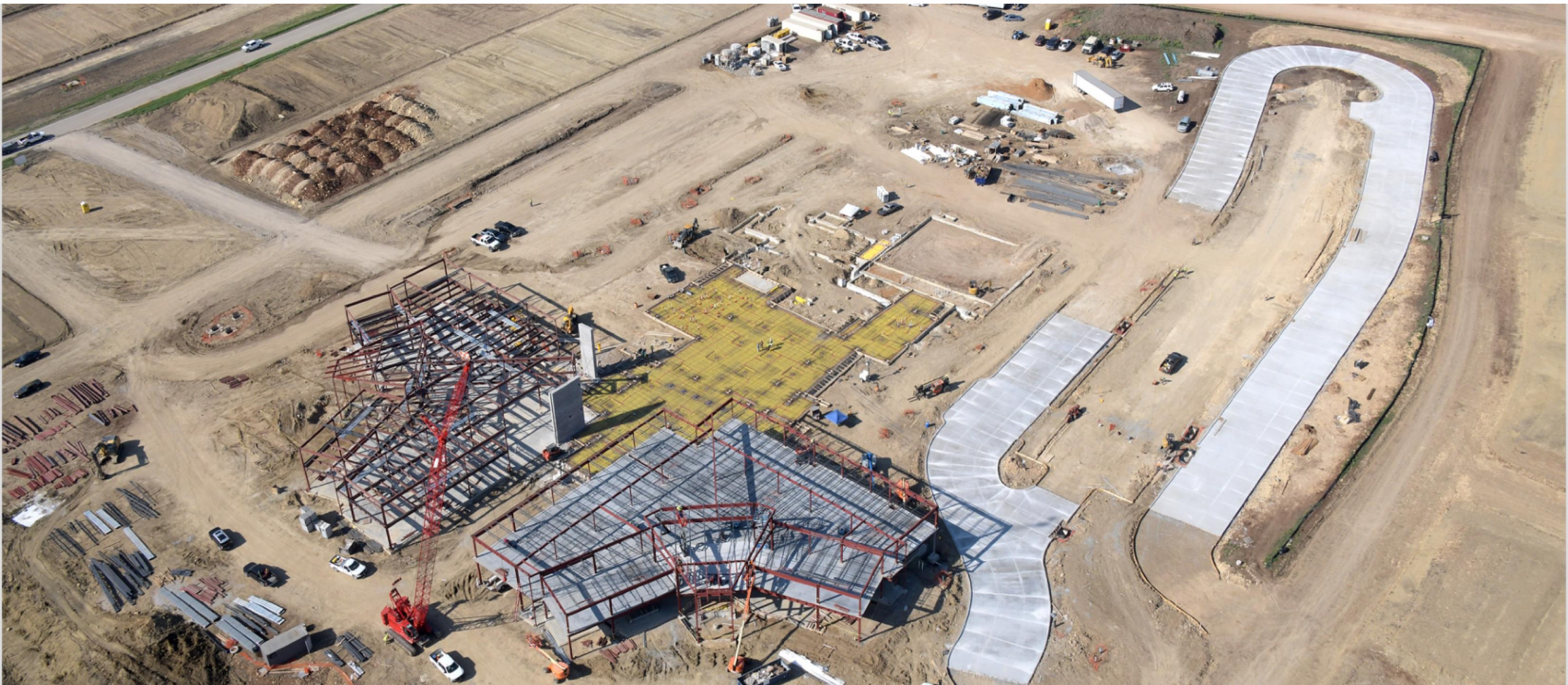




Carter Elementary School #21



Daniel Elementary School #22



Hatfield Replacement ES



Seven Hills Replacement ES



Northwest HS – Renovations & Additions









An aerial photograph of a large-scale construction project. The main structure is a long, multi-sectioned industrial building with a dark grey roof and walls. Some sections are still under construction, showing steel framing and scaffolding. A large red and white crane is positioned in the foreground, its boom extending over the building. The construction site is surrounded by dirt roads, construction materials, and equipment. In the background, there are residential houses, a railway line, and open fields.

www.nisdtxconstruction.org

NORTHWEST ISD

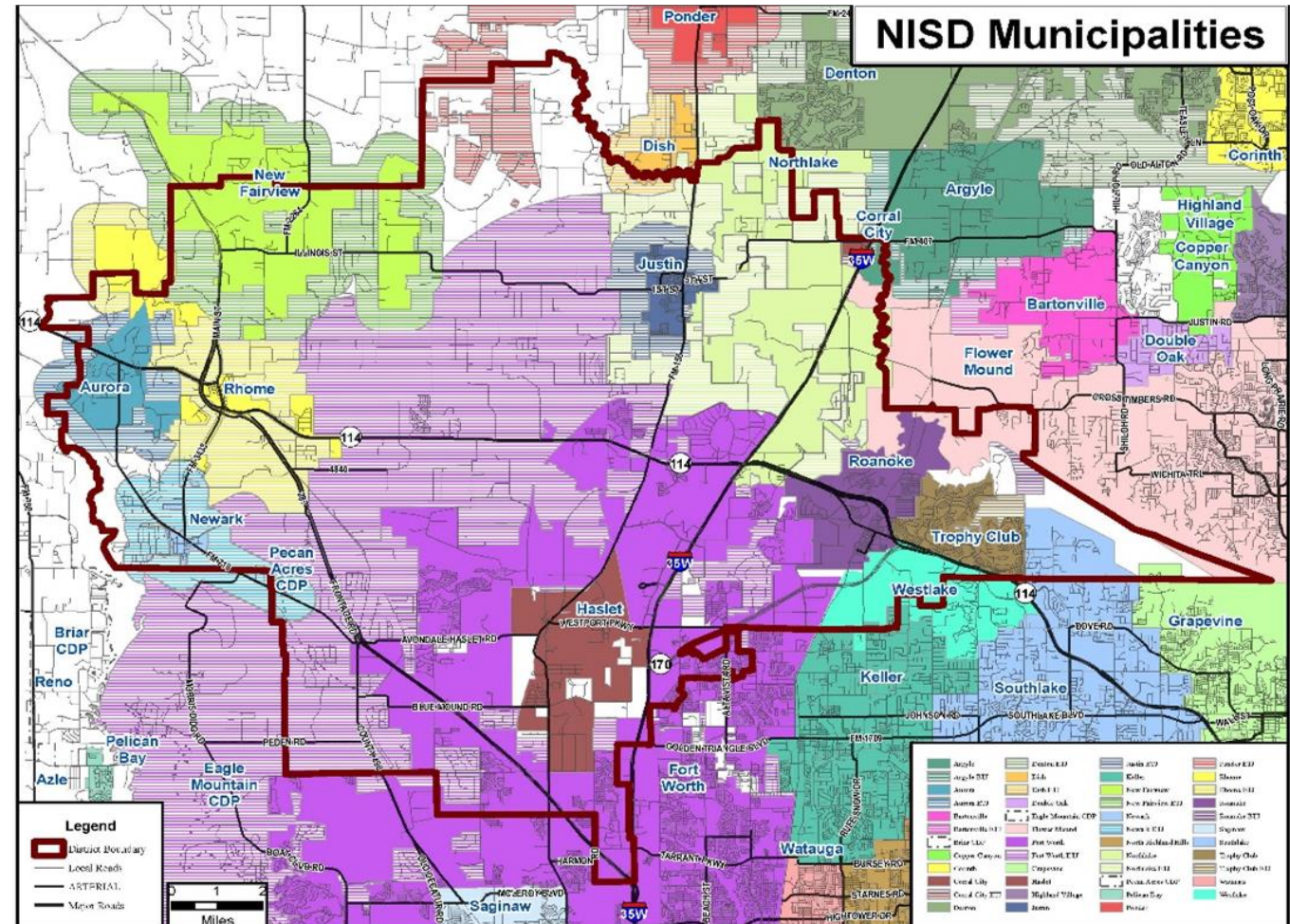
LONG RANGE PLANNING COMMITTEE



Meeting #1 Board Summary

About Our Community

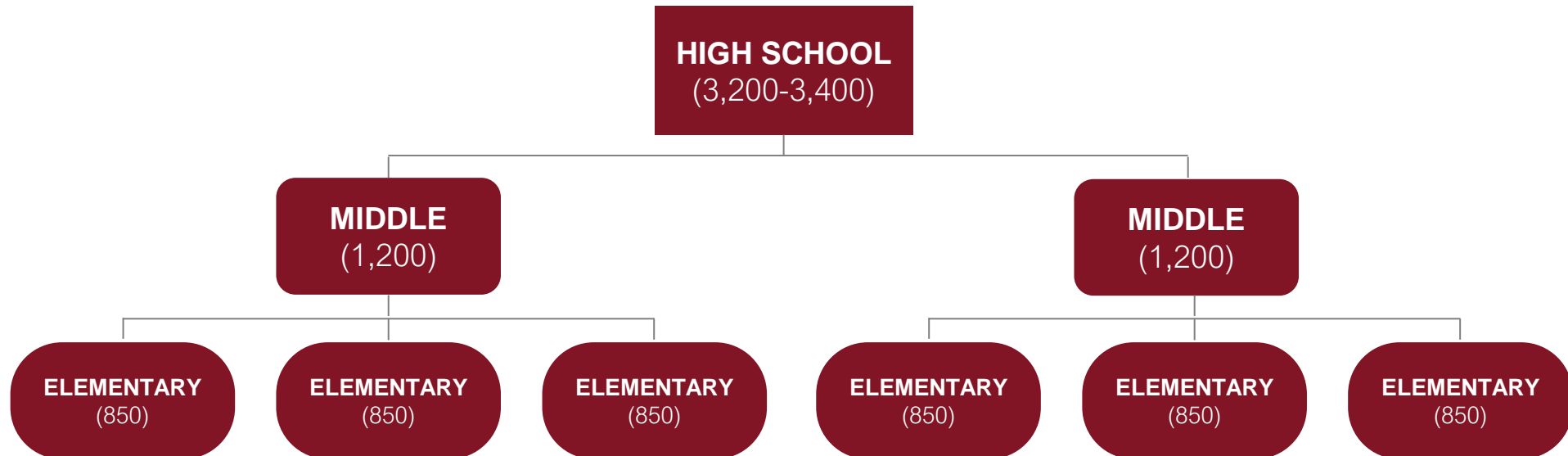
1. Aurora
2. Flower Mound
3. Fort Worth
4. Haslet
5. Justin
6. Keller
7. Newark
8. New Fairview
9. Northlake
10. Rhome
11. Roanoke
12. Southlake
13. Trophy Club
14. Westlake



Feeder Patterns

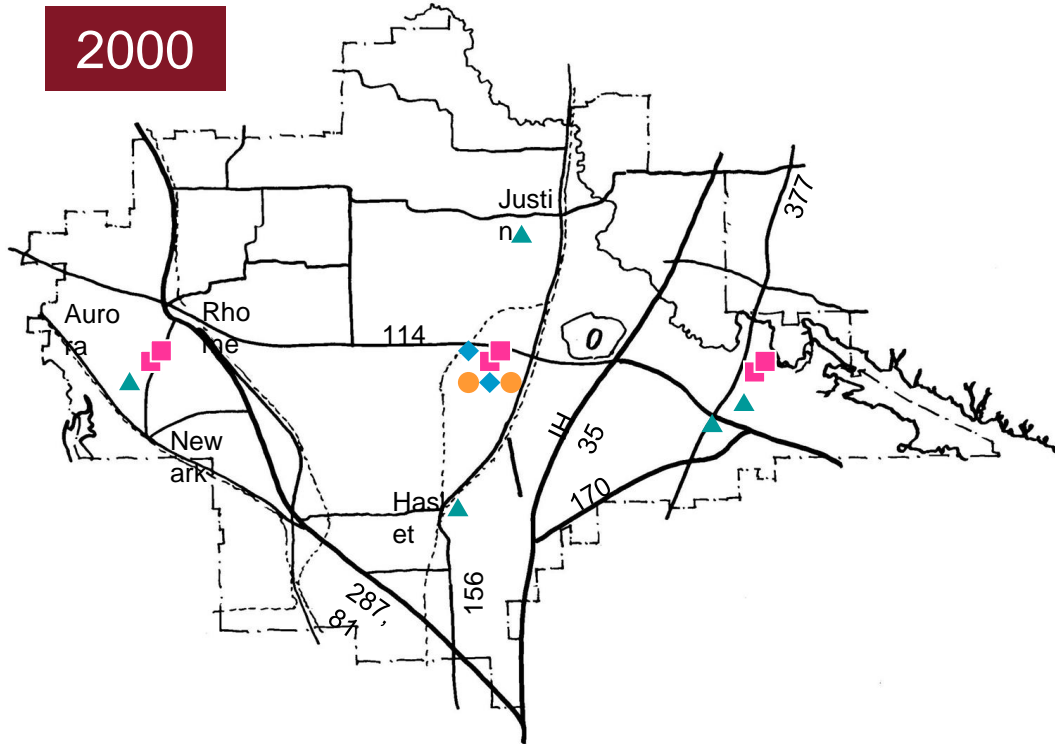
Current Model

- 6 Elementary Schools (850 capacity = 140 students/grade)
- 2 Middle Schools (1200 capacity = 426 students/grade)
- 1 High School (3,200 – 3,400 capacity = 850 students/grade)



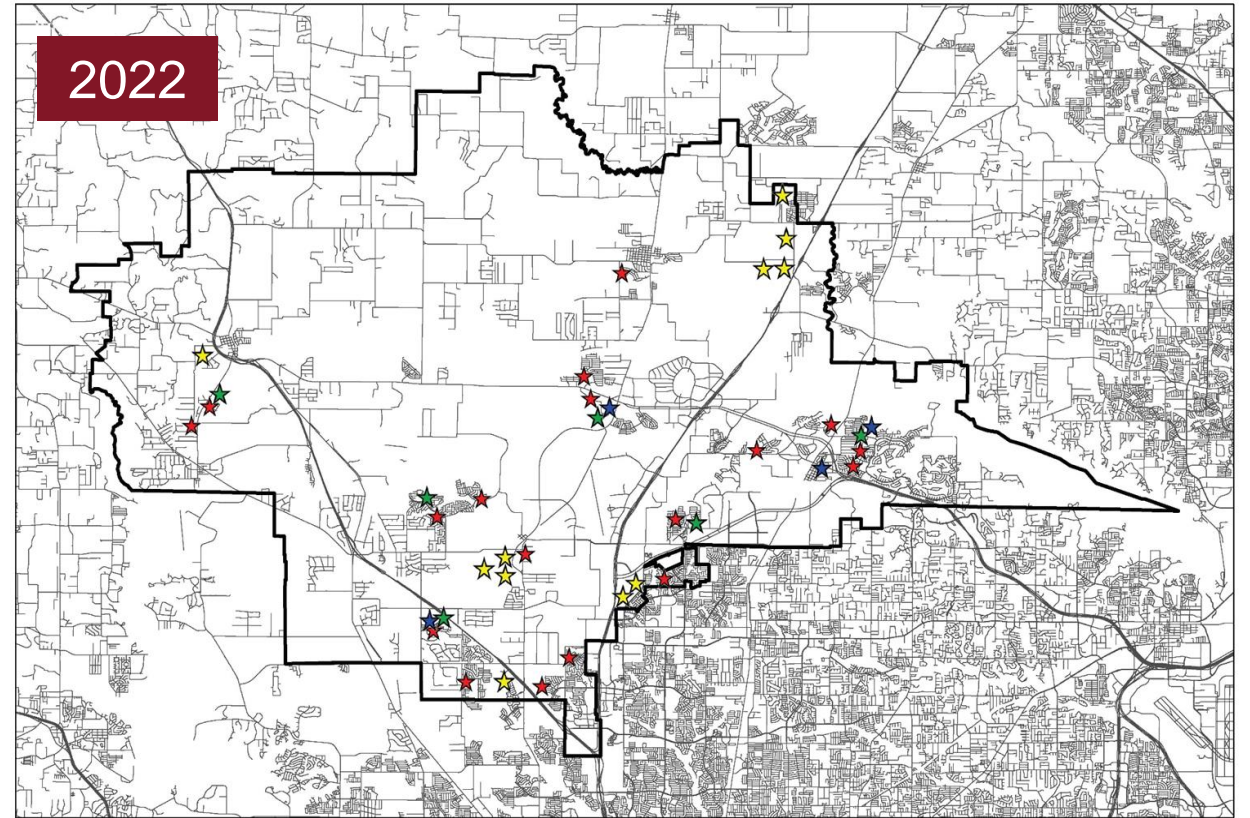
History of the LRPC

2000



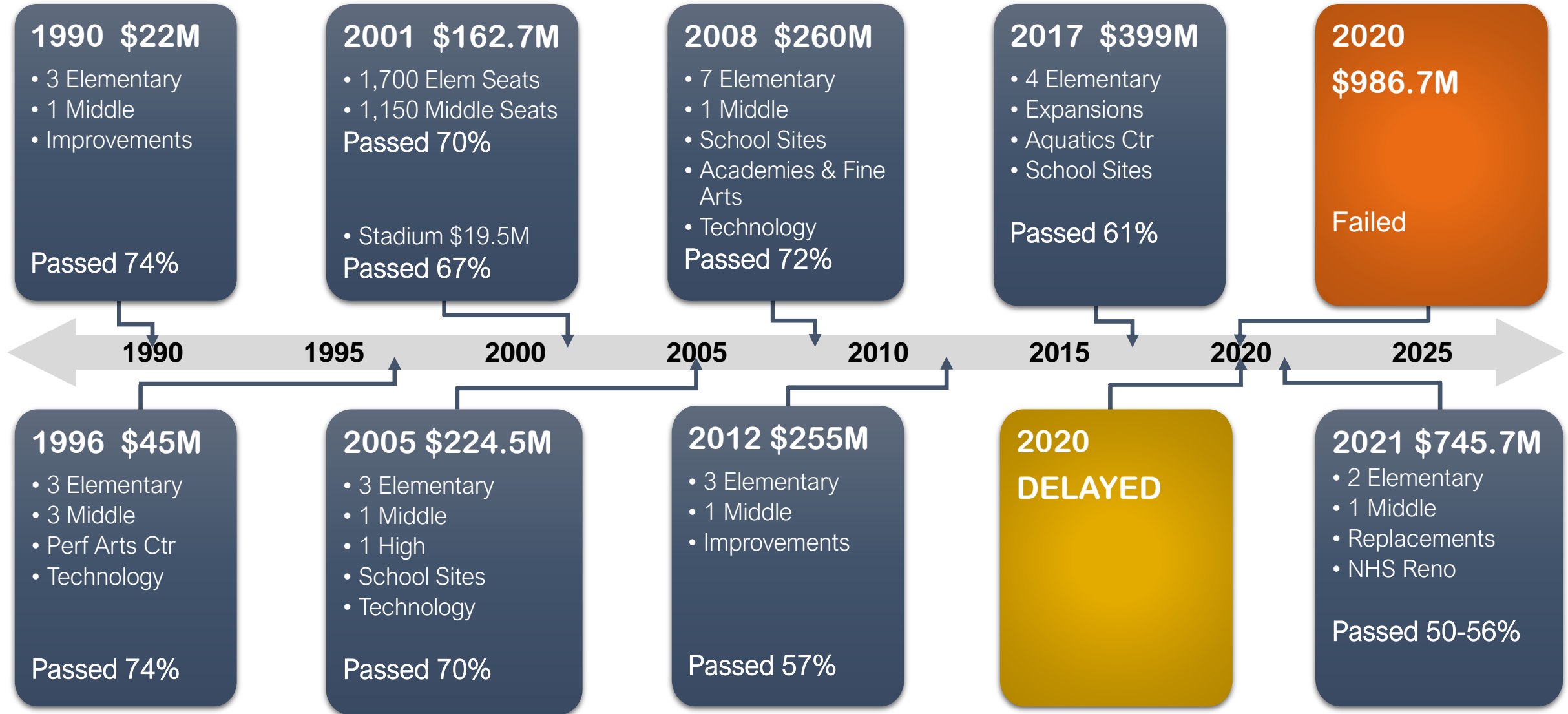
- 5,425 students
- 232 Square Miles
- 1,000,000 SF space
- 5 Elementary Schools
- 3 Intermediate Schools
- 3 Middle Schools
- 1 High School
- 2 Alternative Schools

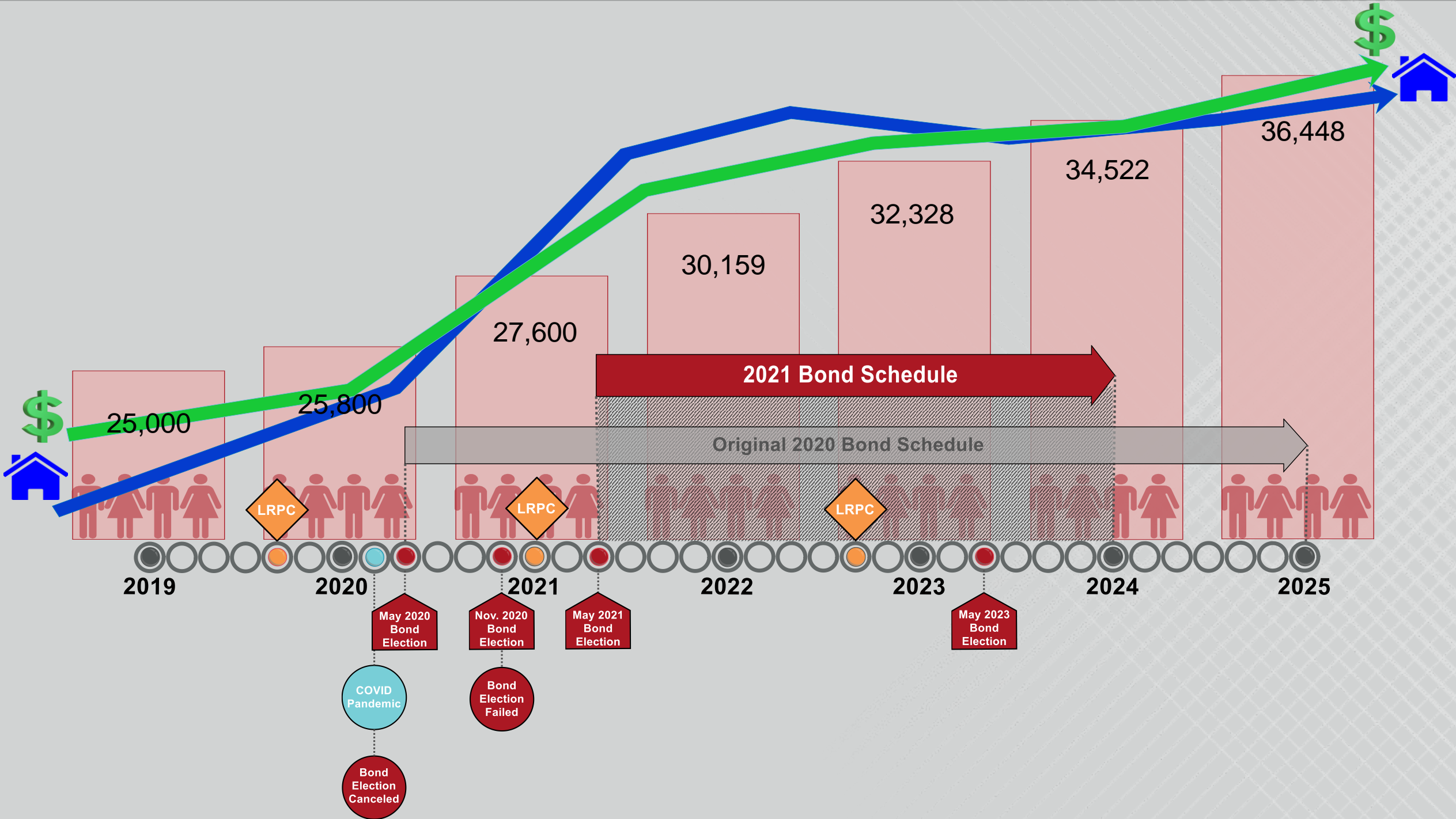
2022



- 29,144 students
- 234 Square Miles
- 5,400,000+ SF space
- 20 Elementary Schools
- 6 Middle Schools
- 4 High Schools
- 1 Alternative Schools

Bond History





Committee Charge

- Consider the educational needs of all students and align with the district's mission, vision and goals
- Represent the entire NISD community, its values and perceptions during the planning process
- Assess and prioritize the district's current and long-term facility needs, including, but not limited to:
 - District Growth and Capacity
 - Building Conditions and Infrastructure
 - Safety and Security
 - Evolving Educational Delivery and Programs
- Form a recommendation for consideration by the NISD Board of Trustees

Safety & Security Initiatives

- District standardized door vision kit coverings for all doors and spaces
- Continued standardization of stop the bleed kits and cabinets
- Radio replacement – (life cycle replacements units)
- Radio Accessories – (batteries)
- Wave on Cloud Technologies for communications and LTE support for responder staff
- LP Cameras
- Orchestrate and Ally – Modules
- Radio Wave & devices – Coordinators and Monitors
- Traffic Control devices - barricades pylons and cones
- License Plate Reading Technology
- RMS - Orchestrate - will include parking management etc.
- Call Center EOC technologies and backup systems
- Weapons detections upgrades for NISD Stadium (possibly other events)

NORTHWEST ISD

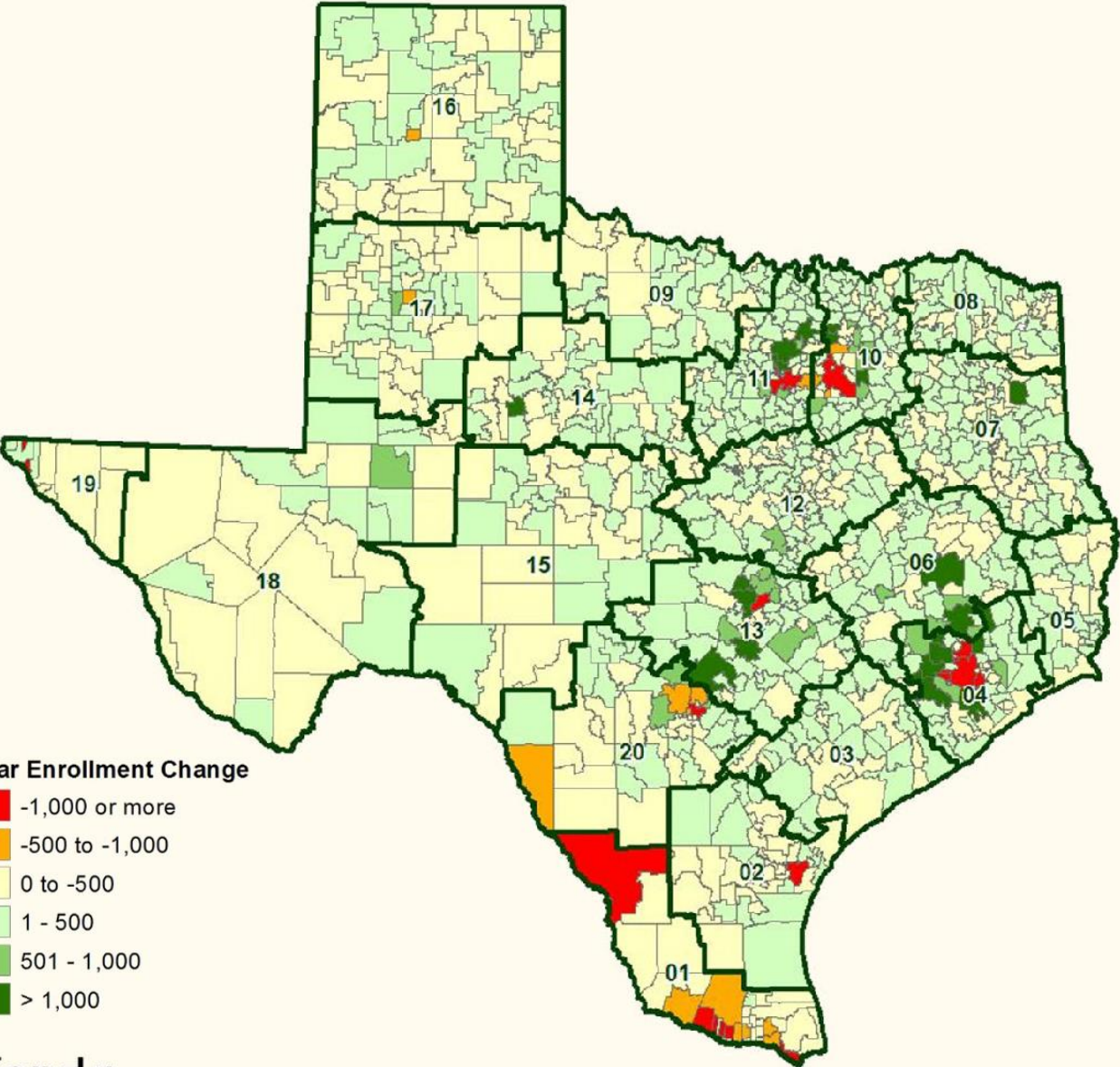
LONG RANGE PLANNING COMMITTEE



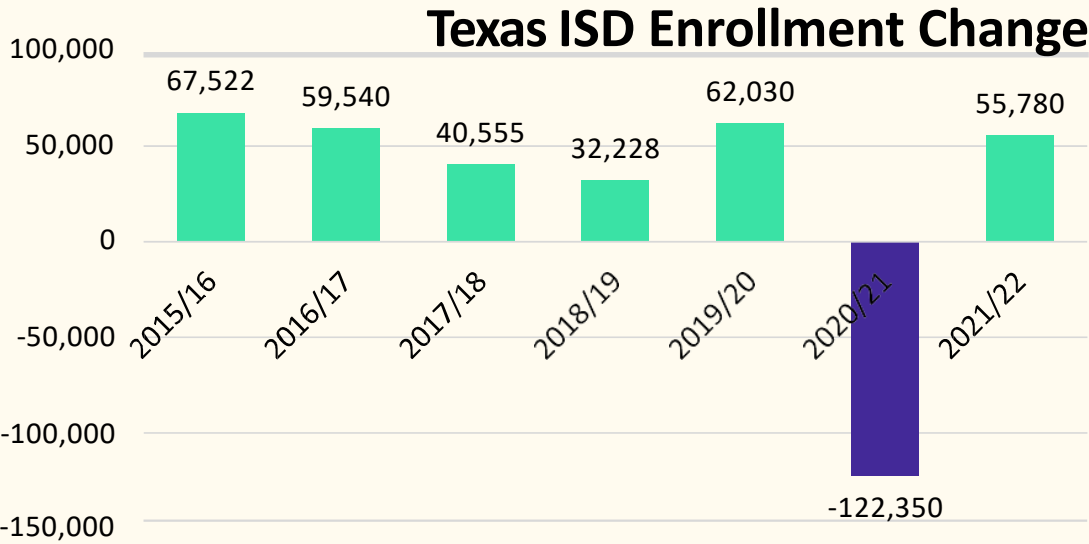
Meeting #2 Board Summary



State Enrollment Trends



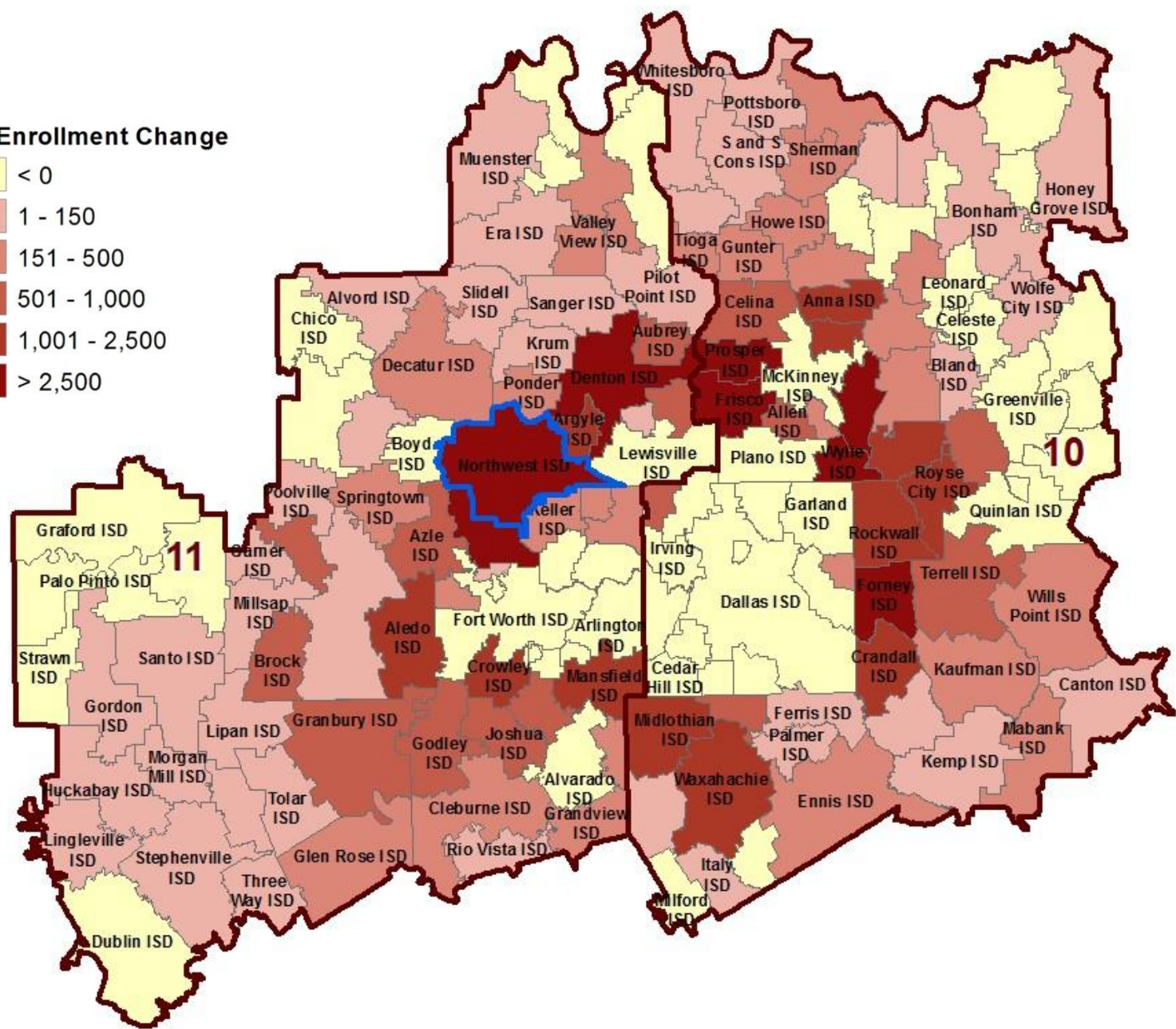
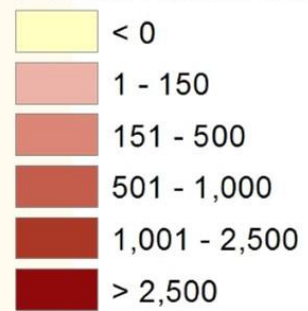
2021/22 State Enrollment	
Total Enrollment	5,427,370
Total Growth	55,780





Region 10 & 11 Enrollment Trends

5 Yr Enrollment Change



- Northwest ISD enrollment grew by 5,539 students between 2016/17 and 2021/22, an increase of 25.1%

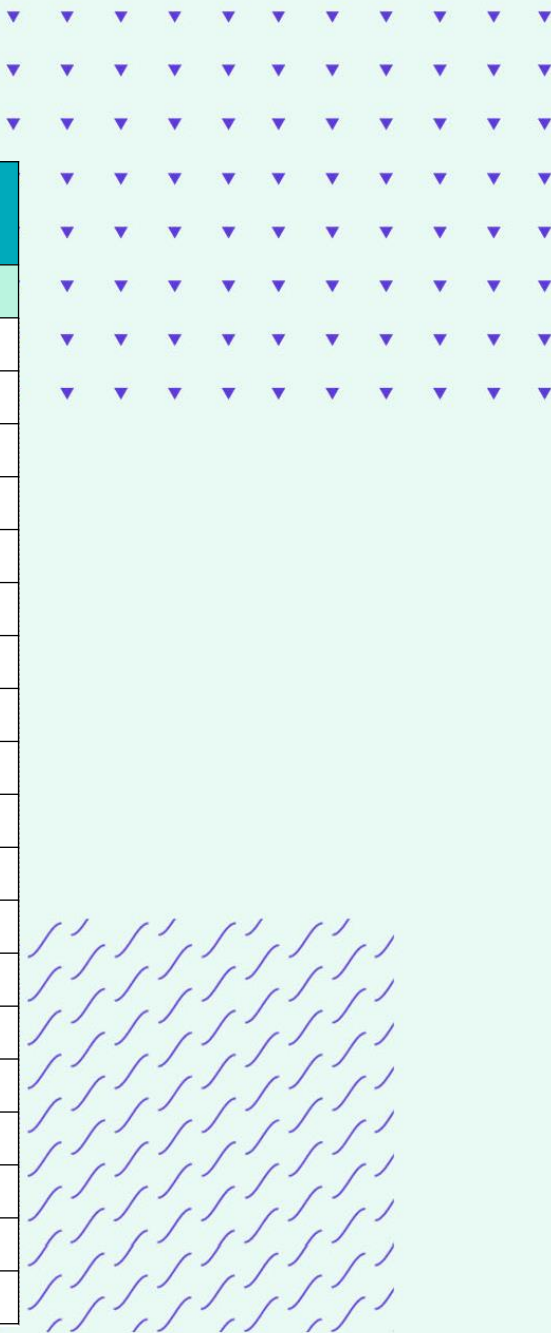
Rank	DISTRICT	5-YEAR CHANGE (16/17-21/22)	ANNUAL CHANGE (20/21-21/22)	SQUARE MILES
1	Northwest ISD	5,539	2,200	252.1
2	Denton ISD	3,323	1,684	170.5
3	Eagle Mt-Saginaw ISD	2,811	1,219	72.9
4	Aledo ISD	1,925	645	131.1
5	Argyle ISD	1,893	543	35.2
6	Mansfield ISD	1,250	432	94.0
7	Crowley ISD	1,063	547	57.2
8	Little Elm ISD	912	179	38.6
9	Burleson ISD	850	199	50.2
10	Aubrey ISD	711	468	46.0



DFW New Home Ranking Report

ISD Ranked by Annual Closings – 2Q22

Rank	District Name	Annual Starts	Annual Closings	Inventory	VDL	Futures
1	NORTHWEST ISD*	4,519	3,608	2,508	3,040	36,070
2	DENTON ISD	2,817	2,753	2,160	3,124	31,273
3	FORNEY ISD	2,484	2,712	1,109	2,412	30,175
4	PROSPER ISD	2,844	2,630	2,323	3,032	21,195
5	FRISCO ISD	1,590	1,799	1,291	1,339	9,749
6	DALLAS ISD	2,031	1,614	1,834	2,128	6,257
7	PRINCETON ISD	2,434	1,557	1,609	1,826	9,571
8	ROYSE CITY ISD	1,812	1,312	1,348	1,929	8,515
9	MIDLOTHIAN ISD	1,341	1,157	916	1,037	20,949
10	CROWLEY ISD	1,334	1,154	796	2,130	16,373
11	CRANDALL ISD	1,486	1,138	890	1,021	13,856
12	WAXAHACHIE ISD	1,030	1,072	540	1,172	26,958
13	LEWISVILLE ISD	1,242	1,015	989	1,208	2,504
14	EAGLE MT-SAGINAW ISD	1,225	987	820	2,277	16,479
15	ROCKWALL ISD	1,411	942	1,214	2,369	8,989
16	MCKINNEY ISD	1,146	940	883	1,512	14,761
17	ANNA ISD	1,164	913	732	880	7,162
18	CELINA ISD	1,330	880	1,035	765	33,549
19	AUBREY ISD	1,590	841	1,154	680	5,737
20	COMMUNITY ISD	1,245	835	895	706	8,679



* Based on additional Templeton Demographics housing research
**Includes Age-Restricted subdivisions

Elementary Campus Utilization

Elementary Schools	Nominal Building Capacity	2022-23 Building Capacity	% Current Capacity
Beck	850	725	85.00%
Berkshire	850	706	83.00%
Haslet	850	883	103.00%
Hatfield	450	597	132.00%
Hughes	850	660	77.60%
Granger	850	749	88.00%
Sendera	850	680	80.00%
Peterson	850	702	82.50%
Love	850	749	88.00%
Justin	650	601	92.46%
Lakeview	650	543	83.54%
Nance	650	518	79.69%
Prairie View	650	621	95.54%
Roanoke	850	653	76.82%
Seven Hills	650	649	99.85%
JC Thompson	850	819	96.35%
Carl E Schluter	850	701	82.47%
Lizzie Curtis	850	679	79.88%
Lance Thompson	850	820	96.47%

Secondary Campus Utilization

Middle Schools	Nominal Building Capacity	2022-23 Building Capacity	% Current Capacity
Chisholm	1100	676	61.00%
Pike	1100	1156	105.00%
Tidwell	1200	1047	87.25%
Medlin	1200	990	82.50%
Wilson	1200	1415	118.00%
Adams	1200	1380	115.00%
High School	Nominal Building Capacity	2022-23 Building Capacity	% Current Capacity
Northwest High School	2525	2278	90.22%
BNHS	3200	2813	87.90%
Steele	450	229	50.89%
V.R. Eaton	3200	3278	102.44%

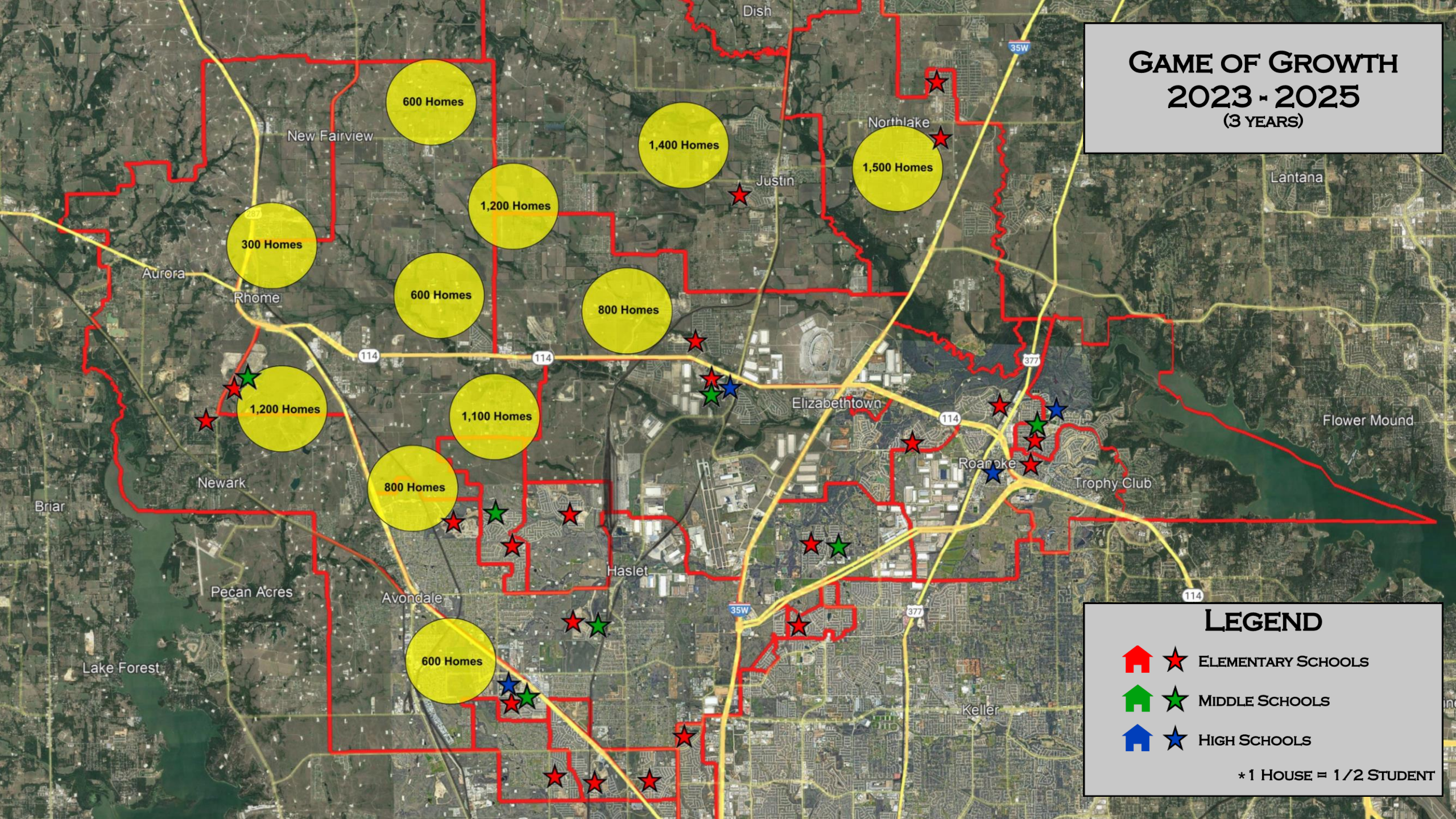
NISD Game of Growth









Game of Growth Instructions

- Map of the district showing multiple hot spots of growth
- Different colored buildings to represent ES, MS, and HS
- Work as a table to plan how many additional schools will be needed over the given time period
- A district representative will be with you capture your solutions

GAME OF GROWTH
2023 - 2025
(3 YEARS)

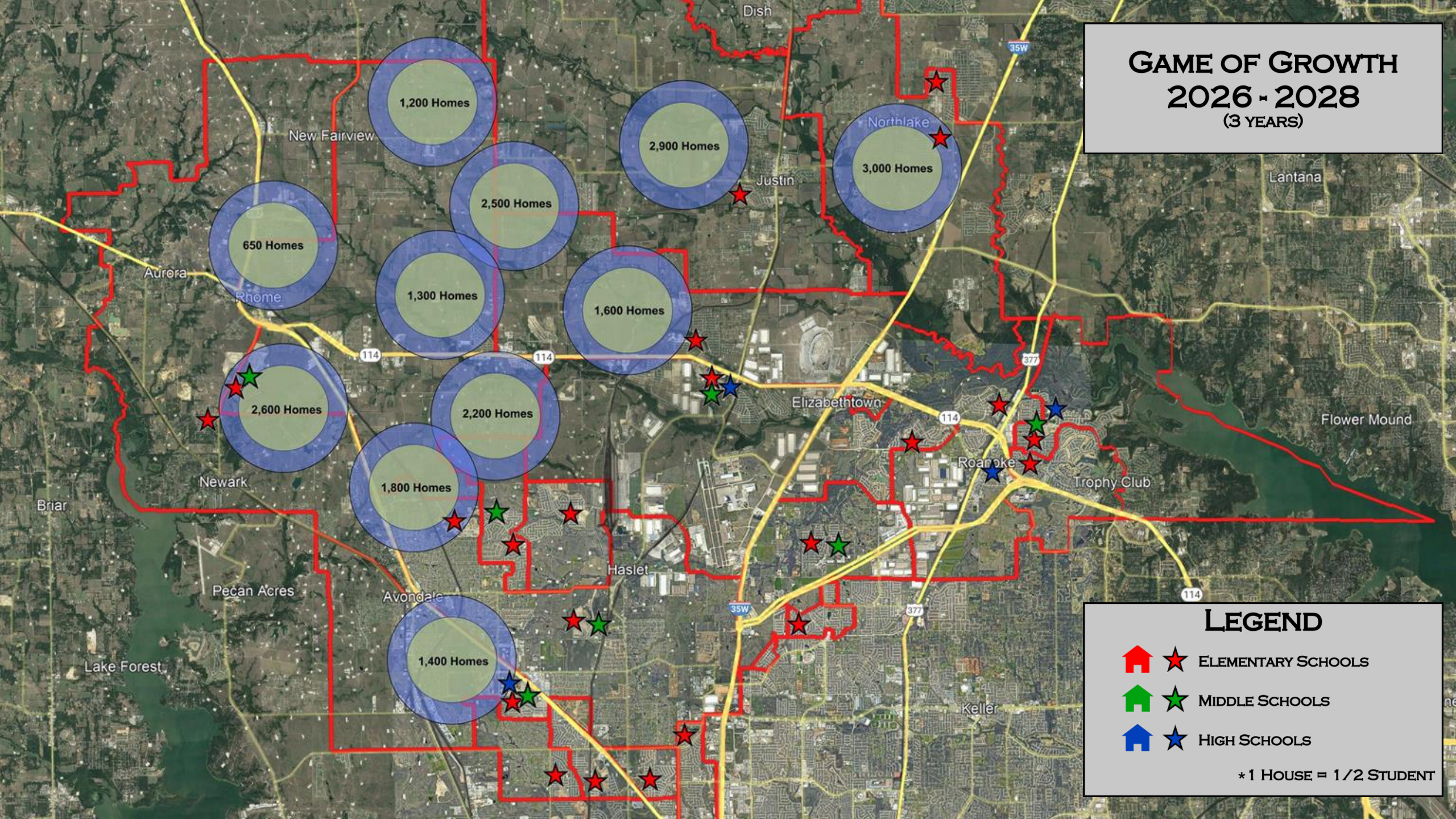


LEGEND







-   ELEMENTARY SCHOOLS
-   MIDDLE SCHOOLS
-   HIGH SCHOOLS

* 1 HOUSE = 1/2 STUDENT

GAME OF GROWTH
2026 - 2028
(3 YEARS)

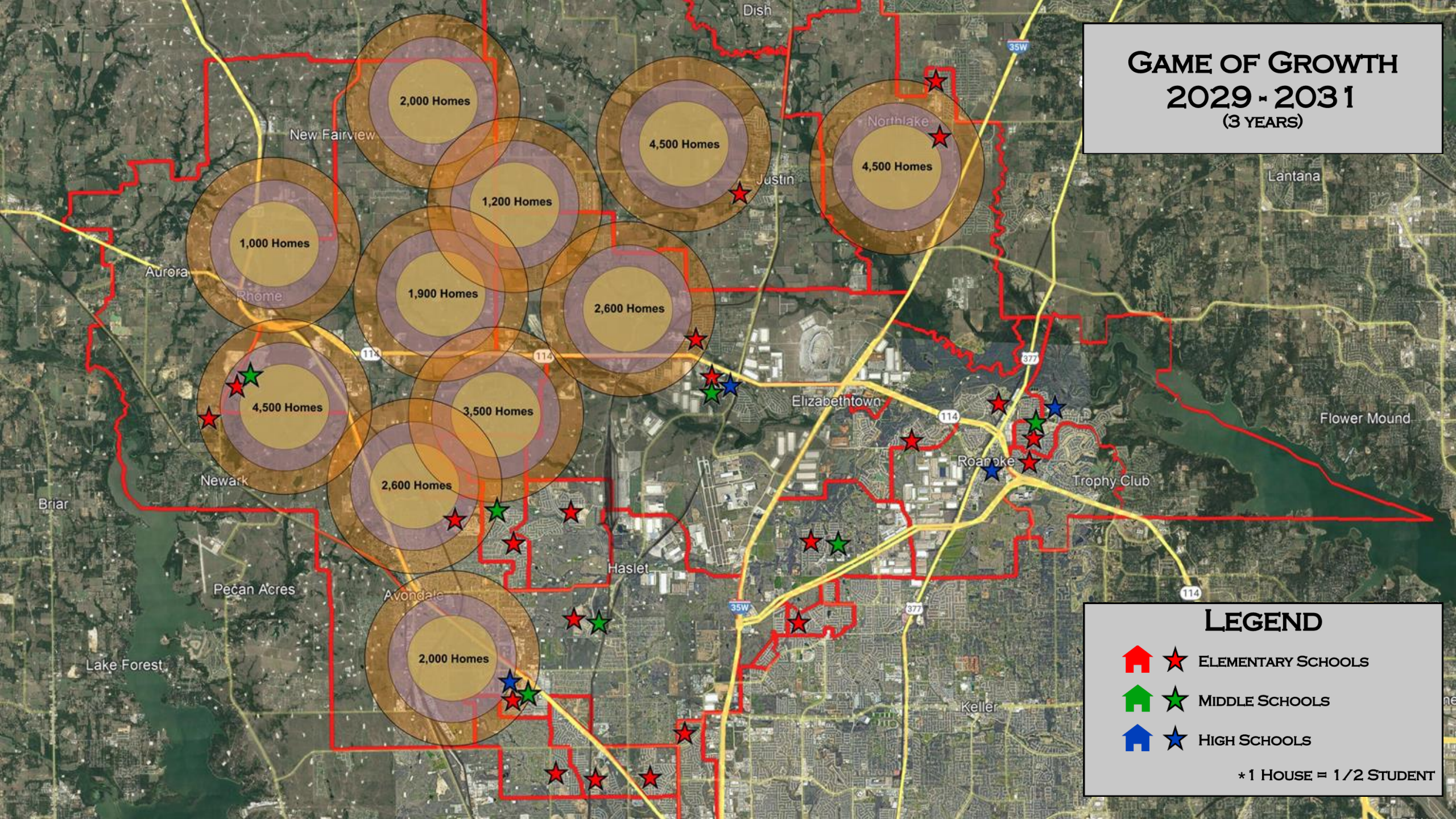


LEGEND







-   ELEMENTARY SCHOOLS
-   MIDDLE SCHOOLS
-   HIGH SCHOOLS

* 1 HOUSE = 1/2 STUDENT

GAME OF GROWTH
2029 - 2031
(3 YEARS)



LEGEND

-   ELEMENTARY SCHOOLS
-   MIDDLE SCHOOLS
-   HIGH SCHOOLS

* 1 HOUSE = 1/2 STUDENT



What will we need to accommodate growth?

- Land
- Buses
- Early Childhood Centers
- Elementary Schools
 - Replacement Schools
- Middle Schools
- High Schools
- Stadium(s)
- Performing Arts Center
- Multipurpose Arena
- Another Ag Facility
- Infrastructure
 - Technology
 - Safety & Security
- Anything Else?

Anticipated Forecasting Schedule

	2019-20	2020-21	2021-22	2022-23	2023-24	2024-25	2025-26	2026-27	2027-28	2028-29	2029-30
ELEM. SCHOOLS	Lance Thompson (#19) Expansions Sendera Ranch JC Thompson	Haslet Elem. Replacement	New Elem. #20 (Berkshire) Renovate Existing Haslet Elem.		New Elem. #21 (Livengood Carter) New Elem. #22 (Daniel) Replacement Elementary #1 (Hatfield) Replacement Elementary #2 (Seven Hills)	New Elementary #23	New Elementary #24 New Elementary #25 Replacement ES (Justin) Nance Addition	New Elementary #26 Replacement ES (PVES)	New Elementary #27	New Elementary #28	New Elementary #29
MIDDLE SCHOOLS		MS Fine Arts Additions & Renovations Medlin Addition			New Middle School #7 (Worthington)	Pike MS Replacement	New Middle School #8		New Middle School #9		New Middle School #10
HIGH SCHOOLS		Expansions - BNHS - EHS				NHS Expansion		New Comp. High School #4	New Stadium #2		New Comp. High School #5

 2017 Bond Program

 2021 Bond Program

 Future Bond Programs

Committee Transparency

NORTHWEST ISD
LONG RANGE
PLANNING COMMITTEE

HOME COMMITTEE MEETINGS RESOURCES QUESTIONS

NISD Long Range Planning Committee

As one of the fastest growing school districts in the state that attracts more than 1,400 new students each year, we must continually evaluate our facilities and support systems to determine if our learning environments, equipment and infrastructure are equipped to best support the future of our growing student population.

To assist us in this effort, we rely on input from members of the NISD Long Range Planning Committee (LRPC). The LRPC helps us study and prioritize the facility needs of the school district and assists us in providing recommendations to the Northwest ISD Board of Trustees on possible future building projects.

This website has been created to keep our community informed on the progress of the committee and the facility planning process that led to the 2017 bond election.

THE LRPC IS INVALUABLE TO THE PLANNING PROCESS BECAUSE IT ALLOWS THE DISTRICT TO HEAR FROM AND INCORPORATE MANY DIFFERENT PERSPECTIVES FROM PEOPLE IN THE COMMUNITY.

MEETINGS

The LRPC will meet at least six times in 2019-2020 before making its recommendation to the Board of Trustees.

View Meeting Details

RESOURCES

A variety of resources, from administrative liaisons to helpful documents, are available to the LRPC.

See Resources

QUESTIONS

Citizens can submit their own questions or view a list of Frequently Asked Questions.


Submit a Question

NORTHWEST ISD
LONG RANGE
PLANNING COMMITTEE

HOME COMMITTEE MEETINGS RESOURCES QUESTIONS

Meetings

LRPC Meetings



MEETING #1 - TUESDAY, OCTOBER 8, 2019
6:00 p.m.
NISD Administration Building
Board Room

Agenda

Presentation

Meeting Notes

nisdtxlrpc.org

Committee Schedule

	Date	Location
Meeting 1	Tuesday, September 6	Legacy Learning Center
Meeting 2	Tuesday, September 20	Berkshire Elementary School
Meeting 3	Tuesday, October 4	Justin Elementary School
Meeting 4	Tuesday, October 18	Chisholm Trail Middle School
Meeting 5	Tuesday, November 8	Adams Middle School
Meeting 6	Tuesday, November 29	Eaton High School
Meeting 7	Tuesday, December 13	Northwest High School
Meeting 8	Tuesday, January 10	Legacy Learning Center
Recommendation	Monday, January 23	Administration Building
Board Meeting	Monday, February 13	Administration Building