



AMITY REGIONAL HIGH SCHOOL

COLLEGE ADMISSIONS PROFILE 2022 – 2023 | CEEB CODE # 070965
Regional School District #5: Bethany – Orange – Woodbridge



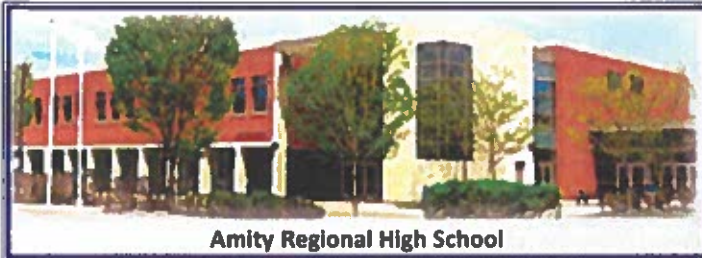
Dr. Jennifer Byars - Superintendent of Schools
Frank Purcaro - Assistant Superintendent of Schools
Andre Hauser - Principal
Jill LaPlante - Director of Counseling

25 Newton Road
Woodbridge, Connecticut 06525
203-397-4830 – Main office
203-397-4846 – Counseling Office
amityregion5.org

COMMUNITY

SPANNING 58 SQUARE MILES AND LOCATED 75 miles east of New York City, Amity Regional School District #5 serves the educational needs of Bethany, Orange and Woodbridge, Connecticut for grades 7-12. It consists of one high school, grades 9-12, and two middle schools, grades 7-8. The district is contiguous to New Haven, a major center of higher education, medicine and the arts. Home to many professionals, the median household incomes* range from \$102K – \$133K by town. The vast majority of family dwellings are single-family owner-owned homes. *2020 US Census

SCHOOL



Amity Regional High School

AMITY REGIONAL HIGH SCHOOL IS A COMPREHENSIVE four-year public high school enrolling 1,323 students in grades 9–12. The school opened in 1954 and was rebuilt in the early 1990s. Amity Regional High School was recently re-accredited by the New England Association of Schools and Colleges with superior ratings. The school is a member of the National Association for College Admission Counseling.

In recent years, the school ranked #1 in Connecticut in an annual Newsweek poll and was also named a National Blue Ribbon High School.

SPECIAL PROGRAMS

- Science Research Program: A four-year honors, application only, program taken in conjunction with a regular science course load.
- Educational Center for The Arts: An off-campus program in New Haven offering courses in dance, instrumental and vocal music, poetry and prose, theater and visual arts. Admission is competitive. Students earn two courses worth of honors credit annually toward graduation.
- University of Connecticut ECE: An opportunity for students to take UConn courses while still in high school.



Partnerships with Yale University, Southern CT State University, and Gateway Community College: Students apply to take courses and seminars offered after school, evenings and Saturdays on the college campuses.

- Independent Study: Sophomores, juniors and seniors may apply. After approval, students conduct an in-depth study in an area of interest. Honors credit is awarded.
- International Studies Program: Amity students come together with students from surrounding schools to study a specific international topic.
- Senior Internship Program: Seniors may apply for an internship that occurs in the final month of senior year. Students are placed in work experiences where they receive on-the-job

GRADUATION REQUIREMENTS

GRADUATION REQUIRES 25 CREDITS, which must include successful completion of four years of English; three years of social studies; four years of math; three years of science; two years of world language; three years of physical education and health; and one year of applied education or fine arts/media. Full-year courses are awarded 1.0 credit, semester courses earn .50 credit. Amity offers a *community service incentive*. Students who complete 100 hours of community service, at least 25 during each high school year, are recognized with a *Community Service Graduation Distinction*.

ADVANCED PLACEMENT COURSES: 27 | HONORS COURSES: 39

ENGLISH

- AP Capstone Research
- AP Capstone Seminar
- AP Language & Composition
- AP Literature & Composition
- LH English II
- LH Humanities
- LH Reading & Writing Poetry
- LH Shakespeare
- LH Philosophy
- LH World Literature
- LH Lit. & Music: *A Reflection of Culture*
- LH Other Voices, Other Rooms: *Literature of the Other America*

MATH

- AP Statistics
- AP Calculus AB
- AP Calculus BC
- AP Computer Science A
- AP Computer Science Principles
- LH Algebra II
- LH Pre-Calculus

SCIENCE

- AP Biology
- AP Physics C
- AP Physics I
- AP Chemistry
- AP Environmental Science
- LH Marine Biology & Oceanography
- LH Human Anatomy & Physiology
- LH Chemistry I
- LH Science Research Year 1
- LH Advanced Science Research

In 2022 Amity administered 753 AP exams to 379 students. 89% scored 3 or better. 60% scored 4 or 5.

SOCIAL STUDIES

- AP US Government & Politics
- AP US History
- AP Psychology
- LH Black and Latino Studies
- LH Critical Issues in Foreign & Domestic Politics
- LH Introduction to Sociology
- LH Multi-Cult. Diversity in Amer.
- LH Cultural Geography

WORLD LANGUAGE

- AP Spanish Lang & Culture
- AP Spanish Lit & Culture
- AP French Lang & Culture
- AP Chinese Lang & Culture
- AP Latin
- LH Spanish III
- LH Chinese III & IV
- LH French III
- LH Latin III

THE ARTS

- AP Music Theory
- AP Studio Art: Drawing
- AP Studio Art 2D
- AP 3D Design
- AP Art History
- LH Symph Wind Ensemble
- LH Symph Orchestra
- LH Chamber Orchestra
- LH Honors Choir
- LH Educational Center for the Arts
- LH Understanding Film
- LH Broadcast Journalism
- LH Filmmaking II
- LH Acting and Directing for Film
- LH Theater II
- LH Theater III
- LH Ceramics III
- LH Studio Art II
- CAREER & TECH ED
- LH Advanced Accounting

training and field experience in a chosen career field.

- Senior Interest Project (SIP): Seniors may apply to explore, investigate and learn about a topic of personal interest. Projects can be interdisciplinary experiences helping students prepare for college, career and life.

COURSE LEVEL DESCRIPTIONS

LH – Honors level provides the most rigorous courses and requires superior scholarship. Some involve preparation for AP exams and are conducted at a pace comparable to college level courses.

L1 – Level one provides a comprehensive, challenging curriculum and includes preparation for some AP exams.

L2 – Level two provides courses that offer a challenging and comprehensive curriculum requiring above average academic ability.

L3 – Level three provides a basic foundation for academic work for post-secondary schools and colleges.

LE – Level electives provides courses in which course objectives and activities are appropriate for all students. These courses receive the same weight in calculating WGPA as a Level 2 course.

WEIGHTED GRADE POINT AVERAGE & GRADING SYSTEM

All courses are included in the weighted and unweighted GPA calculations except any pass/fail or transfer courses. The scale below is used to calculate a WGPA:

| Grade | GPA | LH | L1 | L2 | L3 |
|-------|-----|-----|------|------|-----|
| A+ | 4.3 | 5.6 | 5.16 | 4.73 | 4.3 |
| A | 4.0 | 5.3 | 4.86 | 4.43 | 4.0 |
| A- | 3.7 | 5.0 | 4.56 | 4.13 | 3.7 |
| B+ | 3.3 | 4.6 | 4.16 | 3.73 | 3.3 |
| B | 3.0 | 4.3 | 3.86 | 3.43 | 3.0 |
| B- | 2.7 | 4.0 | 3.56 | 3.13 | 2.7 |
| C+ | 2.3 | 3.6 | 3.16 | 2.73 | 2.3 |
| C | 2.0 | 3.3 | 2.86 | 2.43 | 2.0 |
| C- | 1.7 | 3.0 | 2.56 | 2.13 | 1.7 |
| D+ | 1.3 | 2.6 | 2.16 | 1.73 | 1.3 |
| D | 1.0 | 2.3 | 1.86 | 1.43 | 1.0 |
| D- | 0.7 | 2.0 | 1.56 | 1.13 | 0.7 |
| F | 0.0 | 0.0 | 0.0 | 0.0 | 0.0 |



| Graduates | 378 |
|----------------------|-----|
| 4-Year Schools | 324 |
| 2-Year Schools | 18 |
| Trade Apprenticeship | 10 |
| Work/Gap/Military | 18 |
| Other/Unknown | 8 |

TESTING

SAT Reasoning Summary -- 368 tested

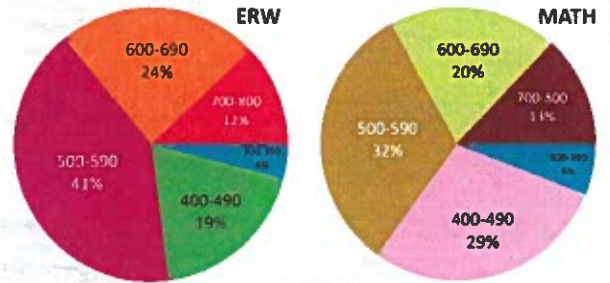
- Mean Scores: Evidence-Based Reading & Writing - 566
- Math: 551

ACT Summary

Mean Scores - 90 tested

- English: 28.5
- Math: 27.3
- Reading: 27.5
- Science: 26.9
- Composite: 27.7

SAT Percent Distribution



NATIONAL MERIT SCHOLARSHIP PROGRAM

- 3 National semi-finalists
- 3 National finalists
- 15 National commended students

ATHLETICS

Amity High School has a rich history of outstanding athletics offering 32 varsity level programs and capturing 61 state titles. Some overall achievements were:

★ 2021 CIAC Michaels Achievement Cup - "Class Act School" ★

- CIAC State Runner-up – **Girls:** Tennis
- SCC Champions – **Girls:** Swimming & Diving, Tennis, Golf
- SCC Runners-Up – **Girls:** Soccer, Volleyball
- SCC Divisional Champions – **Girls:** Cross Country, Volleyball, Tennis
- **Boys:** Baseball, Indoor Track & Field, Outdoor Track & Field
- SCC Players of the Year – **Boys:** Football **Girls:** Soccer, Golf
- SCC Player of the Month – **Girls:** Tennis
- SCC Coach of the Year – **Boys:** Baseball

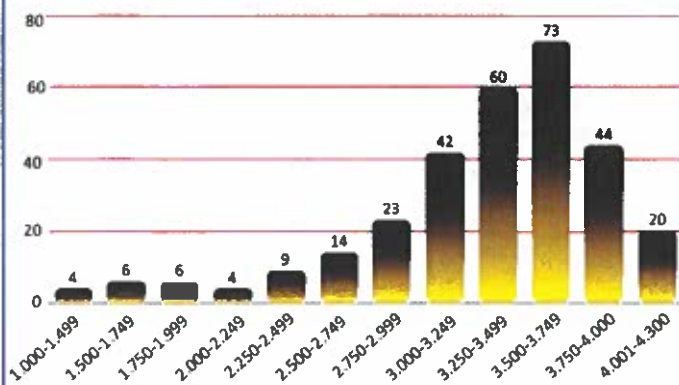


CLASS OF 2023 CLASS RANK AND GPA

Individual class rank is not reported. A weighted Grade Point Average and an unweighted Grade Point Average are reported for the 305 seniors who have attended Amity High School for three full years. (See table at left and charts below.)

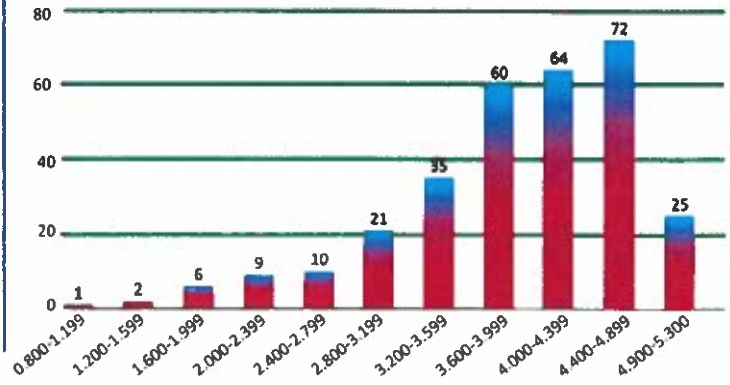
Class of 2023 Grade Point Averages – N=305

Highest GPA: 4.239 | Lowest GPA: 0.851 | Average GPA: 3.313



Class of 2023 Weighted Grade Point Averages – N=305

Highest WGPA: 5.357 | Lowest WGPA: 0.985 | Average WGPA: 3.943



School Counselors

Email Format: firstname.lastname@amityregionh.org

- Marjan Boyns
- Courtney Campbell
- Lisa Conley
- Gerilyn Ferguson
- Lynn Cocco — College & Career Counselor
- John Ierzo
- Ashley Iovanello
- Alison Starr
- Karen Waterman

Disclosure Statement

Amity Regional High School does not disclose confidential disciplinary records to post secondary institutions except as it may be required by law.

COLLEGES ATTENDED BY AMITY REGIONAL HIGH SCHOOL CLASS OF 2022

| | | |
|---|--|--|
| <i>Albertus Magnus College</i> | <i>Marist College</i> | <i>University of California-Berkeley</i> |
| <i>American University</i> | <i>Massachusetts College of Liberal Arts</i> | <i>University of California-San Diego</i> |
| <i>Babson College</i> | <i>Massachusetts College of Pharmacy and Health Sciences</i> | <i>University of Cincinnati</i> |
| <i>Barnard College</i> | <i>McMaster University</i> | <i>University of Colorado-Boulder</i> |
| <i>Barry University</i> | <i>Molloy College</i> | <i>University of Connecticut</i> |
| <i>Bentley University</i> | <i>Montserrat College of Art</i> | <i>University of Delaware</i> |
| <i>Binghamton University</i> | <i>Naugatuck Valley Community College</i> | <i>University of Florida</i> |
| <i>Boston College</i> | <i>New England Institute of Technology</i> | <i>University of Hartford</i> |
| <i>Boston University</i> | <i>New York University</i> | <i>University of Illinois</i> |
| <i>Bowdoin College</i> | <i>Newberry College</i> | <i>University of Iowa</i> |
| <i>Brandeis University</i> | <i>Nichols College</i> | <i>University of Kansas</i> |
| <i>Bryant University</i> | <i>Norfolk State University</i> | <i>University of Maine</i> |
| <i>Bucknell University</i> | <i>Northeastern University</i> | <i>University of Maryland</i> |
| <i>Carleton College</i> | <i>Northwestern University</i> | <i>University of Massachusetts-Amherst</i> |
| <i>Central Connecticut State University</i> | <i>Pace University</i> | <i>University of Massachusetts-Boston</i> |
| <i>Clemson University</i> | <i>Paier College</i> | <i>University of Massachusetts-Lowell</i> |
| <i>College of Mount Saint Vincent</i> | <i>Plymouth State University</i> | <i>University of Michigan-Ann Arbor</i> |
| <i>Colorado State University-Fort Collins</i> | <i>Post University</i> | <i>University of Mississippi</i> |
| <i>Columbia University</i> | <i>Pratt Institute-Main</i> | <i>University of New Hampshire</i> |
| <i>Connecticut College</i> | <i>Princeton University</i> | <i>University of New Haven</i> |
| <i>Converse College</i> | <i>Providence College</i> | <i>University of North Carolina Wilmington</i> |
| <i>Curry College</i> | <i>Purdue University</i> | <i>University of Rhode Island</i> |
| <i>Dartmouth College</i> | <i>Quinnipiac University</i> | <i>University of Rochester</i> |
| <i>Drexel University</i> | <i>Rensselaer Polytechnic Institute</i> | <i>University of Saint Joseph</i> |
| <i>Embry-Riddle Aeronautical University</i> | <i>Roanoke College</i> | <i>University of South Carolina-Columbia</i> |
| <i>Emory University</i> | <i>Roger Williams University</i> | <i>University of South Florida</i> |
| <i>Endicott College</i> | <i>Rollins College</i> | <i>University of Southern California</i> |
| <i>Fairfield University</i> | <i>Rutgers University</i> | <i>University of St Andrews</i> |
| <i>Fashion Institute of Technology</i> | <i>Sacred Heart University</i> | <i>University of Vermont</i> |
| <i>Ferris State University - Grand Rapids</i> | <i>Salve Regina University</i> | <i>University of Washington-Seattle Camp</i> |
| <i>Florida Atlantic University</i> | <i>Smith College</i> | <i>Vanderbilt University</i> |
| <i>Florida Gulf Coast University</i> | <i>Southern Connecticut State University</i> | <i>Vassar College</i> |
| <i>Florida State University</i> | <i>Springfield College</i> | <i>Villanova University</i> |
| <i>Fordham University</i> | <i>St. John's University</i> | <i>Virginia Polytechnic Institute and State University</i> |
| <i>Gateway Community College</i> | <i>Stone Academy</i> | <i>Wake Forest University</i> |
| <i>George Washington University</i> | <i>Stonehill College</i> | <i>Wentworth Institute of Technology</i> |
| <i>Goucher College</i> | <i>Stony Brook University</i> | <i>Wesleyan University</i> |
| <i>High Point University</i> | <i>Suffolk University</i> | <i>West Virginia University</i> |
| <i>Hofstra University</i> | <i>Syracuse University</i> | <i>Western Connecticut State University</i> |
| <i>Housatonic Community College</i> | <i>Temple University</i> | <i>Western New England University</i> |
| <i>Indiana University-Bloomington</i> | <i>The University of Alabama</i> | <i>William & Mary</i> |
| <i>Iona University</i> | <i>The University of Tampa</i> | <i>Worcester Polytechnic Institute</i> |
| <i>Ithaca College</i> | <i>Trinity College</i> | <i>Worcester State University</i> |
| <i>James Madison University</i> | <i>Tulane University of Louisiana</i> | <i>Xavier University</i> |
| <i>Juniata College</i> | <i>Union College</i> | |
| <i>Kenyon College</i> | <i>United States Naval Academy</i> | |
| <i>Loyola University Maryland</i> | <i>University of Bridgeport</i> | |
| <i>Manhattan College</i> | | |