

BRAWERMAN ELEMENTARY SCHOOL

ANNUAL REPORT

2021-2022



MESSAGE FROM Advisory Board Chair

It was an honor and a privilege to serve my first year as the Chair of Brawerman's Advisory Board. The theme for the 2021-2022 school year, *kadima*, helped our board envision a welcoming and comfortable transition, as Brawerman prepared our students for what the future could look like moving onward and forward. Led by our Head of School Brandon Cohen, the Advisory Board parents, administrators, clergy, and faculty all came together to support the year's theme by discussing opportunities and issues that arose and advising on how we could positively embrace each moment.



Brandon, with the support of administrators and teachers, has continued to motivate and push our students to an even higher level. Each part of the curriculum is viewed as an opportunity for students to discover something different and exciting with their peers. Brawerman continually finds innovative ways to provide our children with a higher level education while still implementing core Jewish values. So, it is not surprising that we remain a highly competitive independent school, and proudly watch our children matriculate into the best secondary schools across Los Angeles.

Collaboration between the administrators and this amazing group of parents from our East and West campuses provides the input needed to navigate the needs and practical experiences surrounding this wonderful educational program. During the 2021-2022 school year, Wilshire Boulevard Temple and Brawerman celebrated the opening of the Audrey Irmias Pavillion, the addition of the Resnick Campus, and bringing back our community building events such as our Makers Fair, field trips, party book, and even re-imagining what our food program could look like in the 2022-2023 school year. Members of the board are a strong voice for the community and nothing is impossible with their support. Thank you all for your vision, enthusiasm, and wisdom.

I am excited to explore the path forward. *Kadima!*

JESSICA LEWENSZTAIN, Chair, Brawerman Advisory Board

BRAWERMAN ADVISORY BOARD

Jessica Lewensztain, Chair
Alex Berman
Brad Conroy
Nahal Danesh
Anna Fridman

Craig Gerber
Jennifer Ghosland
Carrie Rifkin
Jessica Rosenberg
Jannelle Ross

Ben Scott
Anat Simantob
Steven Taylor

BRAWERMAN Parent Association

Once again, the **Brawerman Parent Association** (PA) embraced the ever-changing landscape of the 2021-2022 school year. We continued to invent ways to engage our community, while keeping everyone safe and healthy. In the spirit of the school year's theme *kadima* - moving forward - the PA found creative ways to celebrate the Jewish holidays and Brawerman traditions and bring our community together.

The **Brawerman West** PA kicked off the year with the Jewish holidays, celebrating *Rosh HaShana* with apples and honey and shaking the *lulav* and *etrog* in two beautifully decorated *sukkot*. Our Consecration and *Simchat Torah* celebration provided a meaningful opportunity to bring Kindergarten and Grade 6 parents on campus as our oldest students officially welcomed our youngest learners into our community. November brought a focus on *tikkun olam* with our annual Candy Drive, Thanksgiving Basket Drive, and Toy Drive, where parents were back on campus collecting much needed donations for partner organizations. In the spring, parents were back on campus for in-class volunteering. We had our Book Fair inside the chapel as a joint event with the Mann ECC to support our annual scholarship fund. Our Book Drive took place at the same time, and has always been a great way to give back to our neighboring community. Our teacher appreciation committee continued to provide our faculty with snacks and lunches throughout the year. We even had a surprise coffee cart along with churros to thank the teachers for all their hard work!

The **Brawerman East** PA focused the start of the year on *tikkun olam*, including parent volunteers packing groceries at the Karsh Center every other week, a book drive benefiting Corporation for Better Housing, a toy drive benefiting the Karsh community for the holidays, and a candy drive for Operation Gratitude. Parents decorated the Karsh Center for the holidays to create a winter wonderland for the toy distribution. To bring our parent community together, we held two parent socials in the backyards of our own school families' homes where laughter was heard and hugs were exchanged as friends reunited and new friends were made. We kicked off the first opportunity for the entire school to be back together with our Healthy Heart community event where families joined for a day of outdoor physical activity and challenges to raise awareness and donations for the American Heart Association. As we reached full-circle two years after the pandemic shutdown, we came back in full swing for *Purim* with bounce house obstacle courses, a dunk tank, donut eating races, glitter tattoos, photo booth keychains, cotton candy, and so much more. The year rounded out with party book celebrations to raise funds for scholarship, a book fair in partnership with the Glazer ECC, a Makers Fair to showcase our student tinkers, crafters, scientists, and artists, a VIP shabbat with special guests invited to shop at the book fair and schmooze before *Shabbat*, and our Sports Day celebration to culminate the school year!

It was such a meaningful and eventful year where our community came together and moved forward - *kadima!*



Nahal Danesh
PA Co-President,
Brawerman West



Carrie Rifkin
PA Co-President,
Brawerman West



Jennifer Ghosland
PA President,
Brawerman East

MESSAGE FROM

The Head of School

We have come a long, long way. The 2021-2022 school year saw us make many strides to a pre-pandemic time. We will remember the year less for the challenges and more for what it returned to us. We returned to being together for events such as *Purim*, Sports Day, and graduations. We returned to competing with other schools in Blaze Athletics, going on field trips, and traveling on airplanes for overnight extended visits to Sacramento, Boston, and Israel. Buddies shared time together and parents shared *Shabbat* with their children. We returned to a focus on the kind of academic excellence and social emotional growth only achievable when in person. We got to be together sharing hugs and smiles, and we returned to the feeling of being part of Brawerman that we so dearly missed in the earlier days of keeping school open while navigating Covid.



Author Daniel Pink recently published a book about regret where one of the main takeaways was that what we most regret signals what we most value. So when we so intensely missed being together to learn when we were forced to be apart, we recognized how much we valued being together. When we so intensely missed seeing each other's faces, and should I say, smiles, we realized how much we appreciated seeing each other's faces – and smiles. There was much that we regretted over the last two years, but that showed us what was most important to us. It helped us recognize how we need to prioritize what we do next as a community. We better, and more deeply, understand what we most value, especially here at Brawerman. We never valued the feelings of being together more than we did this last year; the feelings of being part of something bigger than ourselves and steeped in our shared Jewish values; the feeling of being part of something joyful, connected, and meaningful.

It is no surprise our very fitting theme for the year was *kadima*, forward. We, as an administration with the faculty, parents, and Temple, leaned into always looking at what we could do next to bring back that Brawerman feeling. The mantra of "*kadima!*" carried us through the year, and none of it would have been possible without both the dedication and passion of the teachers and the commitment and resolve of the parents, led by the respective Parent Associations. The PA presidents and officers worked tirelessly to keep moving us forward together while always remembering to shower the faculty with love and appreciation. The

pages in this Annual Report are another example of the parents' investment in the school, and I am deeply grateful for your support and belief in Brawerman.

There was so much to celebrate over the course of the year. Brawerman East and West had their highest enrollments in the history of the school, with 105 and 282 students, respectively. This year's admissions cycle has generated the largest ever number of new kindergarten students entering the two campuses for next school year, a true testament to work we have done as a community. And Brawerman East and West graduates continue to matriculate to the most selective schools in the Los Angeles area, where Brawerman's track record of placements is very much a reflection of the quality of our students, families, and faculty.

Another blessing we celebrate at Brawerman is that we are more than a school. When a family joins the Brawerman family, they are also joining the Wilshire Boulevard Temple community. We are blessed with the dedication of the clergy who teach weekly Judaics lessons in classrooms, where students, with Rabbis and Cantors, discuss *Torah*, and values, and what it means to be a Jew. We are blessed with the resources of Wilshire Boulevard Temple, with its multiple beautiful campuses, camps, programming, the Karsh Center, and the beautiful Audrey Irmas Pavilion—where we have started to celebrate life cycle events together and look forward to celebrating more in the future.

We also have the benefit of the Temple's deep bench of leadership, with newest member Executive Director of Education Naomi Reem. She is helping spearhead a new strategic plan to catapult us, along with the Early Childhood Centers and in coordination with the Temple, into the future with a clarity of vision and purpose. Her extensive background in Jewish education will be a catalyst for building on Brawerman's strengths moving forward.

I could not be more proud of the school and the community. I am filled with gratitude for you, for believing in and trusting us. I am filled with gratefulness, or should I say, great fullness in my heart and in my mind for being a part of something as meaningful and as important as this community, this *kehilla kedosha*. We have so much to look forward to. We are committed to moving forward, together, to be even better than we were before. *Kadima!*

A handwritten signature in dark ink, appearing to read "Brandon Cohen".

BRANDON COHEN



PURIM

We were all ready to celebrate when *Purim* came around this year, and we went big! To gear up for the festivities, students spent the week dressing in different themes chosen by Student Council, going back in time in clothing from different decades, showing grade-level spirit in selected colors, getting sporty in athletic gear, and saying, “Yeehaw!” in western attire. The week culminated with a joyous *Purim* celebration. We gathered as a community to read from the *Megillah*, make *mishloach manot* bags for the elderly, bake *hamantaschen*, bounce on inflatables galore, and of course eat some sweet treats! The day concluded with Grade 6 students performing self-written parodies about the story of *Purim*. For the first time in a long time, we were back as one Brawerman *kehillah*, and it felt good!



Brawerman WEST Spotlights

STEAM DAY

The 2021-2022 school year’s immersive STEAM experience had a new level of energy as Brawerman students collaborated and learned alongside UCLA’s Tau Beta Pi Engineering Honor’s Society students. Together they made slime and lava lamps while learning about density, static electricity, and surface tension. The various learning modules melded the five critical disciplines (science, technology, engineering, arts, and math) to promote participation, creativity, and curiosity. The holistic approach of STEAM shows students how they can solve almost any problem they face by being both an analytical and a creative thinker.



MAKERS FAIR

Brawerman East's 4th Annual Makers Fair gathered crafters, scientists, tinkerers, and artists. Every grade level showcased their work, and many teachers, parents, and alumni led interactive activity booths and demonstrations. The spirit of creativity and community was back in action on the Glazer Campus!



Brawerman EAST Spotlights

GENSPACE

The Wallis Annenberg GenSpace in the new Audrey Irmas Pavillion hosted Brawerman East students and organized activities that encouraged intergenerational connection. Grade 2 students used GenSpace's art room to create inspirational writing and pictures in conjunction with their theme of *L'dor V'dor* (from Generation to Generation). Grade 5 students led a technology coaching program at GenSpace's tech bar by walking older adults through the features of their smartphones and other devices. Grade 6 students created a learning plan to help strengthen older adults's technology skills so they can stay socially connected.

Brawerman East students and grandparents also got a tour of the age-inclusive space, including the beautiful art on display and the sunken garden on the third floor's central atrium. The tours and intergenerational programming are the first installment of GenSpace's partnership with Brawerman to foster these important intergenerational connections.



Brawerman Trips



Our upper grades had the opportunity to embark on overnight trips for the first time in more than two years. These trips are a cornerstone of our curriculum.

As part of an in-depth study of California history, Grade 4 visited Sacramento. Some trip highlights included a visit to the Capitol Building, a step back in time at Sutter's Fort, and an exploration of the Gold Bug Mine where students got to pan for gold.

Traveling to Boston allowed our Grade 5 students to explore early historical sites that mirrored their in-class study of U.S. history. Students not only visited famous places like Bunker Hill, Fenway Park, and Paul Revere's House, but they also developed their independence skills by flying on a red-eye, ordering dinner on their own, and being away from home for five nights.





For our capstone trip, Grade 6 students headed to Israel to see and feel our Jewish homeland. Students used their Hebrew skills, experienced Shabbat at the Kotel, and felt a deep sense of pride in Israel's history and their Jewish identity.

These trips bring our curricula alive and they build life-long skills for students. Educational destination field trips are the embodiment of experiential education. Students gain independence as they navigate the airport and tour sites in large groups, sleep away from home in hotels, learn how to manage their spending money, reorganize their suitcases, wake up and get ready on their own, and advocate for themselves when in need. The student who arrives at the airport for the start of the trip is not the same one who returns after the transformative journey with their classmates.



BRAWERMAN LEADERSHIP



Brandon Cohen
Head of School



Nadine Zysman
Assistant Head of
School & Principal, East



Andrea
Weinstein
Principal, West



Rabbi Elissa
Ben-Naim
Director of Jewish
Life and Learning



Gillian Feldman
Assistant
Principal, West



Michelle Handzo
Assistant
Principal, West



Noa Grant
Assistant
Principal, East



Danielle Sebring
Assistant
Principal, East



Lindy Goldberg
Director of
Admissions, West



Chris Donohoe
Director of
Admissions, East



Rebecca Spain
Director of
Advancement



Erin Jacobs
Director of
Operations

Wilshire Boulevard Temple Clergy



Rabbi Steven Z.
Leder



Cantor Don
Gurney



Rabbi Elissa
Ben-Naim



Rabbi David
Eshel



Rabbi M. Beaumont
Shapiro



Rabbi Susan
Nanus



Rabbi Joel
Nickerson



Cantor Lisa
Peicott



Cantor Kerith
Spencer-Shapiro



Rabbi Joel
Simonds

Message from Wilshire Boulevard Temple's Executive Director of Education:

NAOMI REEM



Listening to the Brawerman students speak at graduation was the perfect ending to my first year as Executive Director of Education at Wilshire Boulevard Temple. For me, it was a year of discovery and of falling in love with the Temple and the schools. It would be an understatement to say it was a hard year. But it was also a year of resilience, growth, deepening of relationships, and tremendous achievement for the Brawerman students and its faculty and staff. Students spoke about the opportunities they have been given and how every aspect of school life - strong academics, joyful Judaism, athletics, relationships with faculty and staff, the arts, friendships, spiritual moments, the Israel trip - made them the confident young people they are today.

None of this happens on its own. Intentionality permeates everything we do and everyone involved in the schools' success acts from a place of true commitment. The unity of purpose - creating, sustaining, and nurturing the best possible schools for our students and our community - will also guide us to growth in the future as well. Thank you for being an integral part of Brawerman's success!

SPOTLIGHT ON Clergy in Residence

The clergy of Wilshire Boulevard Temple are an integral part of the Judaics program at Brawerman. Each grade level has a member (or more) of clergy assigned for the course of the year to build meaningful relationships as well as to impart knowledge and skills to inspire lifelong Jewish living and learning. In addition to prayers and classical Jewish texts, clergy engage in soulful, reflective conversations that are the cornerstone of our integrated curriculum. Our younger grades learn Jewish music and basic core prayers, and explore holidays and *Torah* studies. Our older grades learn *midrash* (creative stories about *Torah*) and about the Prophets and the function of leadership, as well as prayer preparation for their *b'nei mitzvah*. Students wrestle with high-level questions that do not always have a singular answer, developing minds and souls that are curious, inquisitive, and nurtured. We are proud that our Temple and school work so closely together to ensure the quality of our Judaics program.

~ Rabbi Elissa Ben-Naim
Director of Jewish Life and Learning

MATRICULATION

Brawerman students matriculate to the top-tier independent schools in Los Angeles.

American University
Art Center College of Design
Bard College
Barnard College
Belmont University
Boston College
Boston University
Boulder Business School
Brown University
Cal Poly, San Luis Obispo
Carleton College
Carnegie Mellon University
Chapman University
Claremont McKenna College
Colby College
Colorado College
Columbia University
Cornell University
Dartmouth College
Drexel University
Elon University
Eugene Lang College
FIDM
George Washington University
Georgia Institute of Technology
Hamilton College

Harvard University
Indiana University
Ithaca College
Kenyon College
Lewis and Clark College
Loyola Marymount University
Michigan State University
Middlebury College
New York University
Northeastern University
Northwestern University
Oregon State University
Otis College of Art and Design
Parsons School of Design
Pitzer College
Pomona College
Princeton University
Purdue University
Rhode Island School of Design
Rutgers University
San Jose State University
Scripps College
Southern Methodist University
Stanford University

Syracuse University
Tufts University
Tulane University
University of Arizona
University of California, Berkeley
University of California, Los Angeles
University of California, Riverside
University of California, Santa Barbara
University of California, Santa Cruz
University of California, San Diego
University of Chicago
University of Colorado, Boulder
University of Miami
University of Michigan
University of Pennsylvania
University of Southern California
University of St. Andrews
University of Texas at Austin
University of Vermont
University of Wisconsin
Vanderbilt University
Washington University in St. Louis
Wesleyan University

Secondary Schools	2020-2022
Brentwood School	19
Campbell Hall	5
Crossroads School	9
Geffen Academy	6
Harvard-Westlake School	18
Milken Community School	31
Windward School	30
Other*	18
TOTAL	136

Our alumni
have attended

MORE THAN

< 50
DIFFERENT
COLLEGES

*1-2 student(s) between 2020-2022 has matriculated to the following schools:
The Archer School for Girls, The Buckley School, Chadwick School, The Episcopal School of Los Angeles,
Marlborough School, Oakwood School, Pressman Academy, Sinai Akiba Academy, Tree Academy,
Valley Preparatory School (Redlands, CA), Viewpoint School, Westridge School, and Wildwood School.

MAZAL TOV

to the

Brawerman Alumni Class of 2016!



THEY ARE ATTENDING THE FOLLOWING COLLEGES AND UNIVERSITIES:

Belmont University
Columbia University/Jewish
Theological Seminary
George Washington University
Indiana University
Northeastern University
Northwestern University
Parsons School of Design
Pitzer College

Southern Methodist University
Stanford University
Syracuse University
Tufts University
Tulane University
University of California, Berkeley
University of California, Los Angeles
University of California, Santa Barbara
University of Miami

University of Michigan
University of Pennsylvania
University of Southern California
University of St. Andrews
University of Texas at Austin
University of Wisconsin
Washington University in St. Louis

Alumni Sushi and Shmooze



BRAWERMAN GRANDparents

We are thrilled to thank our Brawerman GRANDparents* for their generous support of our 2021-2022 Annual Giving Campaign. Purposeful connections with grandparents enrich our school community. By connecting *l'dor v'dor*, from generation to generation, we make personal meaning of the world we live in. We look forward to the expansion of this valuable program as it furthers the reach and scope of our school experience while providing additional layers of love and joy to our Brawerman extended family members.

Halina and Alan Alter (*Sam Kleinman*, '27)
 Ana Bercovici (*Siena Shakouri*, '27)
 Lynette and Derek Brown (*Liv Altshule*, '25; *Winston Altshule*, '27)
 Susan and Michael Castle (*Madeleine Ross*, '26)
 Gaby and Gregory Chazanas (*Valentina Chazanas*, '27)
 Betty Cota (*Levi Teitelbaum*, '27; *Eli and Ezra Teitelbaum*, '28)
 Helen and Gary Dosik (*Kayla Nickerson*, '22; *Rebecca Nickerson*, '25)
 Lucy and Gregory Gelfan (*Levi Bloom*, '27)
 Janet and Bill Glucksman (*Sam Glucksman*, '22; *Henry Glucksman*, '24; *Grace Glucksman*, '26)
 Rhonda and John Jacobs (*Noa Bornstein*, '27)
 Debbie and Jimmy Lustig (*Grayson Gardner*, '28)
 Linda F. Lynn (*Eden Lynn*, '20; *Talia Lynn*, '24)
 Phyllis Ribakoff and José Mandes (*Asher Ribakoff*, '26; *Aiden Ribakoff*, '28)
 Janet and Lenny Rosenblatt (*Chloe Conroy*, '21; *Teddy Conroy*, '26; *Courtney Conroy*, '28; *Nathan Labranche*, '24; *Sophia Labranche*, '26)
 Linda and Bill Rouse (*Hudson Messenger*, '25)
 Corrine and Lenny Sands (*Isabel Sands*, '27)
 Anna (z"l) and Leonard Shabason (*Aiden Shabason*, '26; *Zachary Shabason*, '28)
 Gerry and Marvin Teitelbaum (*Levi Teitelbaum*, '27; *Eli and Ezra Teitelbaum*, '28)
 Joan and Bill Vogel (*Gavin Vogel*, '18; *Dorothy Vogel*, '22)
 Betty and Ross Winn (*Brodie Dorfman*, '28)



“

Thank you, Brawerman, for confronting the Covid epidemic with resolve, professionalism, and compassion. The transitions from in-school to home learning and back again were seamless and ensured high quality education for our grandchildren. Kudos to all.”

- HELEN AND GARY DOSIK
Grandparents of Kayla ('22) and Rebecca ('27) Nickerson

“

Experiencing the evolution of Gavin and Dorothy along with the evolution of Brawerman East has added an amazing dimension to our grand-parenting. The school has developed in a wondrous way, while nurturing our grandkids in an exceptional environment.”

- JOAN AND BILL VOGEL
Grandparents of Gavin ('18) and Dorothy ('22) Vogel



“

Our precious granddaughter Isabel is thriving at Brawerman. Every day she bounds out of the car with great enthusiasm to meet the challenges of the day. She is learning the academics and absorbing the values of her Jewish heritage. Isabel, her family, and Brawerman are a perfect match! We are so grateful to the entire Brawerman community.”

- CORRINE AND LENNY SANDS
Grandparents of Isabel Sands ('27)



*Brawerman GRANDparents donated a minimum of \$1,000 to this year's Annual Giving Campaign.

Fundraising & Engagement

REBECCA SPAIN DIRECTOR OF ADVANCEMENT



Another year in the books, and what a great year it was! It was amazing to be back on campus where we could see students' smiling faces and have parents, grandparents, and alumni return to campus for a multitude of events. I am grateful to work for an organization with such a hands-on community that is devoted to making Brawerman the most academic, nurturing, and safest learning environment for our students.

Once again, our incredibly high participation percentage in our Annual Giving Campaign, accompanied by multiple new endowment gifts, are true testaments to the strength and dedication of our community. Thank you to the East and West Annual Giving Co-Chairs, as well as the members of our Endowment Committee. Your support, along with the support of the entire Brawerman community, allowed us to bridge the budget gap, engage in additional programming and trips throughout the school year, and ensure that Brawerman will continue to be here for decades to come.

MORE THAN

\$150,000

in **NEW** endowment gifts and pledges.

52 Families

joined the Brawerman Giving Circle by donating gifts of

\$10,000+

to Brawerman's Annual Giving Campaign.

MORE THAN

\$30,000

from Brawerman grandparents.

RAISED MORE THAN

\$1.432 Million

for our Annual Giving Campaign

to help pay operational costs, update the school's facilities, enhance programming, provide professional development opportunities for our staff, and help cover significant COVID-19 related expenses.

MORE THAN

\$148,000



spent on new technology including 90 laptops for students and faculty.



HOSTED AN

Alumni Sushi and Shmooze

for the Brawerman Class of 2016 Graduates.

HOSTED

Lunch and Learn event for grandparents

celebrating *Chanukah* with Brawerman's Rabbi Elissa Ben-Naim.



Endowment

Brawerman currently has more than \$9 million in cash and legacy pledges.

A robust endowment is an essential component for independent schools in a landscape of rising tuition costs and scholarship requests. It also allows us to support families and areas of need for Brawerman during times of crisis. This fund is a source of long-term support for the school. The principal is invested, and the yearly interest may be used to:

- Provide financial assistance
- Retain and recruit faculty
- Stabilize tuition
- Fund programs

Both Annual Giving and Endowment are critical to Brawerman's success:

- Annual Giving raises funds from all school families every year for current use
- Endowment provides for the future

Endowment gifts of \$25,000 and above will be recognized on our legacy walls on both campuses as well as in Brawerman and Wilshire Boulevard Temple publications. Opportunities are also available to endow special programs at the school.

ENDOWMENT COMMITTEE



Joli Altshule



Margo Freedman



Rochelle Glucksman



Lauryn Harris



Gretchen Klein



Jessica Rosenberg

Not Pictured: Marsha Levin

This is a school we love.
Let's ensure its future.

CHAMPION

\$1,000,000+

Geri and Richard (z"l) Brawerman
Dana and Richard Pachulski
Talía and Jason Rimokh
The Shirken Family

LEADER

\$500,000 - \$999,999

Goldhirsh-Yellin Foundation,
in Memory of Bernard and
Wendy Goldhirsh

BUILDER

\$100,000 - \$249,999

Joli, Andrew, Liv, and Winston Altshule
Nadine Breuer Retirement Event
de Toledo Family Scholarship Fund
Rochelle and Jacob Glucksman
Goldstein Family Fund
Gretchen and Jon Klein
The Sklaver Family

BENEFACTOR

\$50,000 - \$99,999

The Joseph Alexander Foundation
The Samuel Family
The Ullendorff Family

SUPPORTER

\$25,000 - \$49,999

Abrams Family Foundation
The Alpern Family
Allison and Larry Berg
Brawerman Alumni Association Fund
Brawerman Parent Association
Nadine and Steve Breuer
Robin and Elliott Broidy
Lynette and Derek Brown
Shelly and Mike Cohen and
Fran and Joel Parker, in Memory
of Sylvia and Mayer Gutman
The Essey Family
Sherri and John Fogelman
Julie Monkarsh Gadinsky
Margo E. Freedman and
David B. Goldman
Marsha and Fredrick Levin
Marcia and Doug Mankoff
Lauryn Harris and Greg Pimstone
Orit and Nadav Ravid
Michelle and Marc Rosenbach
Caleb Rosenblum '16 and
Micah Rosenblum '21
The Rosman Family, in Memory
of Lily and Don Rosman
The Sabet Family
Lauren and Anton Schiff
Caroline and Robby Soofer
Amy and Jeffrey P. Straus
The Waters Family

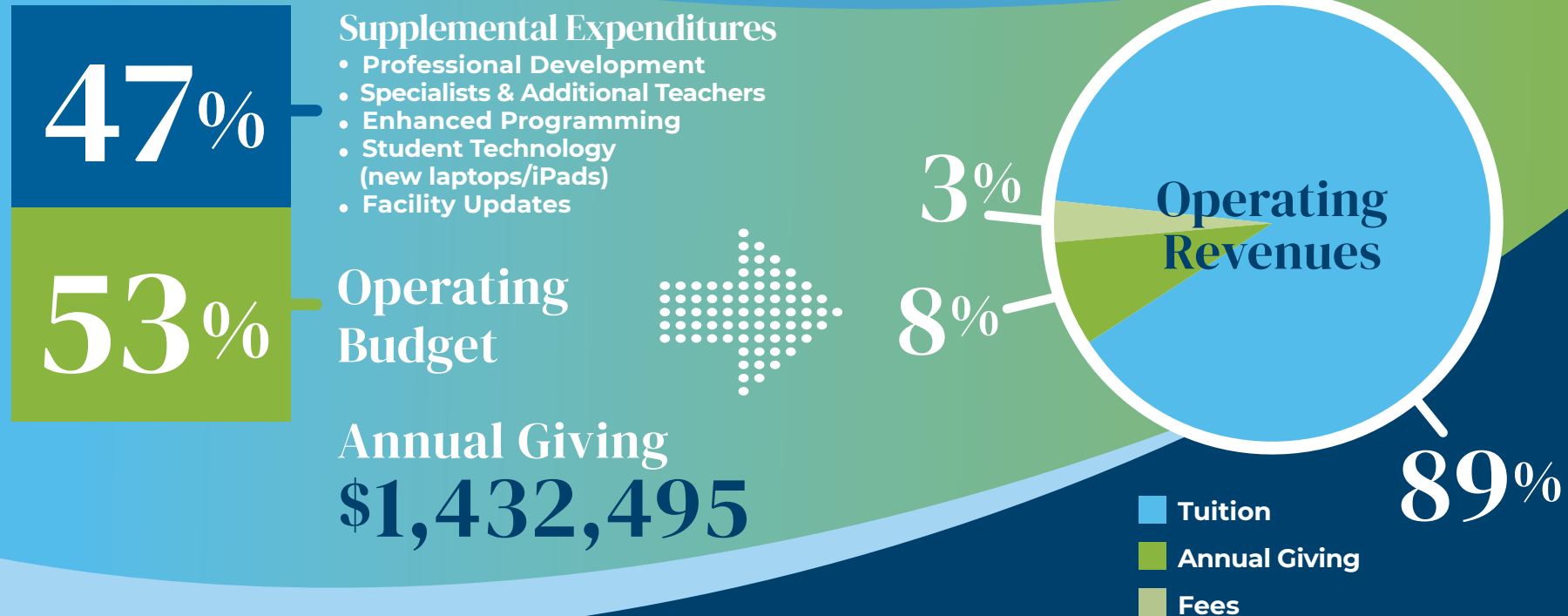
MORE THAN
\$9 Million in cash and
legacy pledges

2021-2022

Annual Giving Campaign

Brawerman's Annual Giving Campaign raised more than \$1.4 million, exceeding our goal of \$1,000,000. These contributions make up 8% of Brawerman's operating budget, which represents 53% of the total proceeds of the Annual Giving Campaign.

The funds raised during the Annual Giving Campaign are vital to every part of the annual operating budget and enable Brawerman to continue growing and making investments in our facilities, education specialists, new teachers and administrators, and ongoing, enhanced programs for our students.





Annual Giving Campaign 2021-2022

Browerman reached 88% participation from East families, 90% participation from West families, and 100% participation from faculty, and we surpassed 100% of our financial goal!



Annual Giving Co-Chairs (East):
Alisha Pedowitz,
Jessica Lewensztain,
and Julie Gerber



Annual Giving Co-Chairs (West):
Amy & Brad Conroy,
Nahal & Kevin
Danesh, and
Kara & Brad Slater

We raised \$1,432,495 to help pay operational costs, update the school's facilities, provide professional development opportunities for our staff, and so much more.

Browerman Giving Circle

VISIONARY (\$50,000+)

Anonymous
Anonymous
The Goldhirsh-Yellin Foundation

BUILDER (\$36,000-\$49,999)

Charlotte and Gary Gilbert
Jason and Talia Rimokh
Reagan Silber
Wendy Sacks and Steven Sklaver

BENEFACTOR (\$25,000-\$35,999)

Lissa and Adam Chesnoff
Amy and Brad Conroy
Nahal and Kevin Danesh
The Essey Family
Goldstein Family Fund
Dorit and Adir Haroni
Ebi and Natalie Nikjoo
The Samuel Family
The Silverman Family
Kara and Brad Slater

PILLAR (\$18,000-\$24,999)

Ghazal and Houman Bana
Rochelle and Jacob Glucksman
The Michiel Family
Bryce and Jason Ozur
Steven and Stephanie Teitelbaum

LEADERSHIP (\$10,000-\$17,999)

Sharon and David Akhtarzad
The Joseph Alexander Foundation
The Alpern Family
Joli and Andrew Altshule
Anonymous
Anonymous
Claudia and Roberto Apelfeld
The Berman Family
Ashley and Michael Bressler
Michael and Behnoosh Farzam
The Gerber Family

Melissa and Brian Haloossim
Neda and Cyrus Harouni
Sharona and Foo Katan
Kirsh Foundation
Michelle and Morris Kokhab
Tannaz and Simon Lavi
Genna and Robert Liebesman
Stefanie and Marc Lipson
Diana and David Makkabi
Sharon and Fred Monempour
Simon and Sharon Ourian
The Rosenberg Family
Jannelle and Benjamin Ross
Beth and Michael Sands
Gina and Todd Schwartz
Pegah and Payam Shahian
Sarah and Adam Sher
Marin and Ross Sklar
Caroline and Robby Soofer
Amy and Jeffrey P. Straus
The Taylor Family
Bonnie and Bill Todman, Jr.
Deborah and David Tractenberg



Annual Giving Campaign 2021-2022

BRAWERMAN ELEMENTARY SCHOOL

PATRON (\$7,200-\$9,999)

Sally and Jack Azad
Rene and Danny Farah
Deborah and Joshua Heald
Jennifer and Manny Labranche
Imbar Sagi-Lebowitz and
Stuart Lebowitz
Michelle and Gregory Nathan
Samantha and Michael
Nussbaum
Charlotte and Richard Offsay
Lauren and Andrew Schwartz
Melissa and Mark Shabason
Rachel and Pouya Yadegar

SUPPORTER (\$3,600-\$7,199)

Anonymous
Anonymous
Orie Argamany
Carolyn and Rob Becher
Arezou and Stephan Berghoff
Megan and Craig Bloom

Elishia and David Bolour
Hadar Granit and Daniel Borenstein
Arika Jacobs and Daniel Bornstein
Lynette and Derek Brown
Susan and Michael Castle
Demetra and Ari Chazanas
Karyn and Marc Cohen
Briana and Seth Dorfman
Monica and Keith Dragoon
Maile Moore and Robert Ellin
Jenn and Todd Feldman
Rachel and Zach Fine
Marianna and Yoel Flohr
Lisa and Alex Fridman
Samantha and Jordan Friedman
Talia and Tyler Friedman
Jennifer and Michael Gardner
Suzanne and Jacob Gehl
Jennifer and Michael Ghosland
Christina and Joshua Glotzer
Lisa Amster and Sam Gorodistian
Emily and Alexander Hakim
Brooke and Kenneth Halsband
Irena Hazon
Dana and Jeff Hynick
Deborah and Brent Iloulain
Bethany Grabiec and
Matthew Jacobs
Rhonda and John Jacobs

Dina and Michael Javaheri
Ellie and Simon Javaheri
Opal and David Judaken
Michelle and Maxwell Kaizer
David Kaminow
Danielle Sebring and Alex Kargher
Gina and Stu Katz
Jennifer and Eric Kaufman
Shanon and Daniel Khakshouri
Carol and Avi Klein
Allison and Jeffrey Kleinman
Jodi and Dana Kravetz
Casey and Joe Leavitt
Diana and Richard Leher
Talia and Martin Lesak
Lindsay and Ori Levy
Jessica and Lior Lewensztain
Maryam and Josh Lieberman
Debbie and Jimmy Lustig
Jamie and Douglas Lynn
Rebecca and Joel Mandel
Lindsey Goldberg and
Alec McMordie
Heather and Scott Menkus
Rena and Alex Merino
Alexis and Michael Messinger
Milken Community School
Staci and Adam Miller
Natale and Dan Naim
Misha Starr and Elliot Nayssan
Jennifer and Zev Norotsky
Amanda and Nic Paul
Dana and David Pogoda
Julia and David Ramin
Naomi Reem
Carrie and Evan Rifkin
Alexis and Seth Ross
Golnaz and Kayvon Rouhani

Corrine and Lenny Sands
Cami and Scott Sargent
Jacqueline and Joshua Schechter
Schuyler and Michael Schwimer
Nicole and Steve Seigel
Ashley and Rabbi Beau Shapiro
Anat and Joseph Simantob
Jenny and Rony Shram
Jennifer and Jason Silverstein
Dori and Larry Simon
Kelly and Matt Sloan
Joanne Nabielsky and
Emilio Smeke
Tatiana and Leo Smirnov
Neda and Danny Sooferian
Neta and Sean Soroudi
Jessica Kronstadt and Will Turner
Amy and Jacob Weber
Erica and Adi Weinberg
Alyssa and Steve Weinberger
Lauren and Matt Weisbarth
Julie and Rusty Weiss
Shirin and Peyman Yadegar
Nadine and Zach Zysman

DONOR (up to \$3,599)

Lida Abramov
Susan Smith and Jeremy Adler
Hillary and David Allen
Halina and Alan Alter
Will Alvarado
Anonymous
Anonymous
Leslie Appelbaum
Ada Arita

Karen Yenofsky and William Askins
 Miri Avraham
 Kevin Ayala
 Nooshin and Igal Bakshandeh
 Barbara and Brad Ballard
 Alexis Barbag
 Lia and Gabriel Barenfeld
 Emily Barnett
 Julia Barrett
 Rabbi Elissa Ben-Naim
 Olivia and Jonathan Benabou
 Lemor and Tomer Benito
 Ana Bercovici
 Sahar and Ophir Bitton
 Linda and Donald Blauner
 Helena and David Bloch
 Geri Brawerman
 Paul Callahan
 Gaby and Gregory Chazanas
 Hillary Chesler
 Lisa Eppel and Craig Chisvin
 Adrienne Coffield
 Arlo Cohen
 Brandon Cohen
 Dina and Noel Cohen
 Shelly and Mike Cohen
 Betty Cota
 Chesley Cunningham
 Darline Cuevas and Randy Curtis
 Judith Daniels
 Nicole and Ronn Davids
 Hugo de Castro-Abeger
 Karen and Michael De Vore
 Auriane Desombre
 Chloe Director
 Chris Donohoe
 Mark Dorner
 Helen and Gary Dosik

Tova Leibovic-Douglas and
 Austin Douglas
 Courtney Edson
 Stephanie and Rabbi David Eshel
 Rozita Farahdel
 Gillian and Adam Feldman
 Chelsea File
 Fernanda and Jonathan Flicker
 Christine Flynn
 Linda and Sean Foley
 Nina and Steven Freund
 Amy Wakeland and Eric Garcetti
 Harrison Gaskill
 Joy Schwartz and Tim Gaylord
 Lucy and Gregory Gelfan
 Isai German
 Haley Ginsberg
 Girl Scout Troop 4945
 Jaimie Glasson
 Janet and Bill Glucksman
 Lindy Goldberg
 Dikla and Guy Goldshmit
 Lindsay Astor Grant and Robert Grant
 Noa and Jon Grant
 Bruce Green
 Gail Greene
 Michelle Groveman
 Analia Saban and Erwin Grussie
 Michelle Handzo
 Romy Harari, *Class of 2020*
 Chloe Beckerman and Justin Hardt
 Yonit Harounian
 Nicole Hebert
 Luke Heller
 Amy Lerner-Hill and Charles Hill
 Leah Hochman
 Luis Honorato
 Oriana Horowitz

Laura Hussey
 Jeff Imerman
 Allison Inoshita
 Erin Jacobs
 Ben Kamer
 Rambod Kamrava
 Joshua Karbelnig
 Noa and Josh Keimach
 Maxine Keith
 Anne Kessler
 Margaret Soper and Jason Kessler
 Nomi Shichor and Michael Koepke
 Logan Kosko
 Rachel Malamed and Steven Kroll
 Rachel Kupferberg
 Ariel and Maximo Langer
 Liliana Larios
 Peter Levenson
 Amanda Levin and Neil Leventhal

Marsha and Fredrick Levin
 Charlie Lewensztain, *Class of 2024*
 Mila Lewensztain, *Class of 2026*
 Adena Loewenthal
 Rocio Lona
 Yvette Lopez
 Dafna Ben-Gera and Samson Lov
 Linda F. Lynn
 Stanley Ma
 Wendy Maduff
 Limor Magen
 Mitzvah Makers
 Jennifer Maman
 Emily Mandelberg, *Class of 2019*
 Phyllis Ribakoff and José Mandes
 Parastou Shilian and Joseph Mann
 Stephanie and Brian Mau
 Jessica Meisels





Annual Giving Campaign 2021-2022

BRAWERMAN ELEMENTARY SCHOOL

Jessica Mackenzie and Daniel Miller
Paula and Jim Miller
Tamara and Jeremy Miller
Sharon and Pooya Mobasser
Sarah Moody
Rebecca Moray
Karen Morgenstern
Sara and Burton Morris
Randi and Patrick Moss
Donna Nadel
Kirin and Babak Nehoray
Marlee Nesser
Valeria Nevarez
Julia and Rabbi Joel Nickerson
Charlene Niku
Rachel Olguin
Morissa O'Mara
Samantha Parker
Ashley Paul
Alisha Pedowitz
Jennifer Jarrett and Dave Pedowitz
Paula Epstein and Dan Persoff
Yael Koren and Eran Pick
Maya Popkin
Melissa and David Presby
Orly Renetzky
Michelle and Keith Richman

Margarita and Danny Rojany
Gail and Fred Rollman
Dani Rosenbach
Floryn and Daniel Rosenberg
Tracy Rosenberg
Janet and Lenny Rosenblatt
Gillian and Ira Rosensweig
Jessica Rosner
Helen and Jack Ross
Rachel and Allen Roth
Linda and Bill Rouse
Maddie Rozells
Adrienne and Stanford Rubin
Galit and Randall Rubin
Judithe and Art Salter
Marla Saltzman
Fariba Sameyah
Natalie and Gil Saraf
Jessica Savel
Barry Schapira
Mauricio Schwartzman
Carrie and Ben Scott
Jason Serrano
Anna (z"l) and Leonard Shabason
Galite and David Shafer
Lisa and Camran Shafii
Jennifer and Farbod Shakouri
Lisa and Alan Sher
Emily Wagner and Jayson Shore

Jodi Shorr
Kara and Seth Silverman
Melanie Silvernail
Benjamin Siskin
Sara and Larry Sloan
Jessica and Boris Solodkiy
Rebecca Spain
Lee Spiro
Ryan Stearn
Sophia and Josh Stein
Jae Steinic
Selena and Nick Sternberg

Santiago Svidler
Gila Tabibian
Julie Tasoff
Ariana Urbont and William Taylor
Gerry and Marvin Teitelbaum
Jenny and Paul Tennen
Angie and Josh Tepper
Bic Thatawat
Carrie and Daniel Tischler
Suzana and Jacques Tizabi
Stephanie and Michael Todd



Bonnie Tucker and Scott Tommey
Danielle and Alex Umansky
Angelica Villalobos
Joan and Bill Vogel
Michelle and Peter Vogel
Andrea Weinstein
Dorie Weiss and Ryan Weinstein
Gilad Weisner
Jill Weiss
Tali and Jordan Weiss
Jennifer and David Wiener
Betty and Ross Winn
Ruth Yablans
Melody and Roby Yadegar
Hofit De Levie and
Hanan Yochelman
Jeanette Yoon
Jayme Zahavi
Jenny and Ronen Zipkin
Joseph Zipkin
Brian Zipser
Orit Ziv
Debbie Zolla

COMMUNITY SPONSORS

BJE: Builders of Jewish
Education
The Jewish Federation
of Greater Los Angeles
Milken Community School
Ralph's Community
Contribution Program

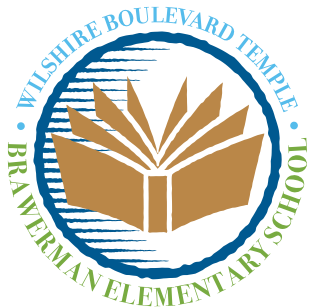
Thank you

to the entire Brawerman community
for your generosity.

We deeply appreciate your support
and commitment to this campaign.

We could not have succeeded
without each and every one of you!



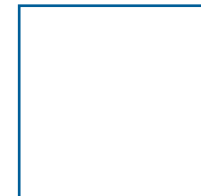


EAST CAMPUS

3663 Wilshire Boulevard
Los Angeles, CA 90010

WEST CAMPUS

11661 W. Olympic Boulevard
Los Angeles, CA 90064



BRAWERMAN ADMINISTRATION

Brandon Cohen, *Head of School*
Nadine Zysman, *Assistant Head of School & Principal, East*
Andrea Weinstein, *Principal, West*
Rabbi Elissa Ben-Naim, *Director of Jewish Life and Learning*
Gillian Feldman, *Assistant Principal, West*
Michelle Handzo, *Assistant Principal, West*
Noa Grant, *Assistant Principal, East*
Danielle Sebring, *Assistant Principal, East*
Lindy Goldberg, *Director of Admissions, West*
Chris Donohoe, *Director of Admissions, East*
Rebecca Spain, *Director of Advancement*
Erin Jacobs, *Director of Operations*

For information on how to support Brawerman, contact Rebecca Spain at (424) 208-8944 or rspain@brawerman.org.

BRAWERMAN MISSION STATEMENT

We provide an unparalleled educational experience rooted in Jewish values - inspiring innovative thinking, empowering responsible leadership, and honoring individuality within a nurturing community.

WILSHIRE BOULEVARD TEMPLE CLERGY

Rabbi Steven Z. Leder, *Pritzker Chair, Senior Rabbis*
Cantor Don Gurney
Rabbi Elissa Ben-Naim
Rabbi David Eshel
Rabbi M. Beaumont Shapiro

Rabbi Susan Nanus
Rabbi Joel Nickerson
Cantor Lisa Peicott
Cantor Kerith Spencer-Shapiro
Rabbi Joel Simonds

BOARD OF TRUSTEES

Scott Edelman, *President*
Deborah Dragon, *Vice President*
Claire Goldsmith, *Vice President*
Rebecca Jonah, *Vice President*
Kevin Neustadt, *Treasurer*
Caroline Kuperstock, *Secretary*
Jeffrey H. Cohen
Carolyn Enenstein
Jennifer Haarman
Abbi Hertz
Charles Hirschhorn
Skip Kessler
Fern Topas Salka
Reagan Silber
Skip Victor

David Wimmer
Betty Winn
Robin Zucker
Michael Swartz, *Counsel*
Alberto Valner, *Immediate Past President*

Honorary Board Members

Howard M. Bernstein, Audrey Irmas,
Julie Miller, Richard Pachulski

Donna S. Nadel, *Executive Director*
Naomi Reem, *Executive Director of Education*
Toby Berkow, *Associate Executive Director*
Jodi Berman, *Associate Executive Director*
Douglas Lynn, *Associate Executive Director*

2021-2022 EDUCATION & SCHOOL GOVERNANCE COMMITTEE FOR WILSHIRE BOULEVARD TEMPLE SCHOOLS

Caroline Kuperstock, *Chair*
Dena Bloom
Ronn Davids
Deborah Dragon
Claire Goldsmith
Lauryn Harris-Pimstone
Rebecca Jonah
Jenny Zipkin

