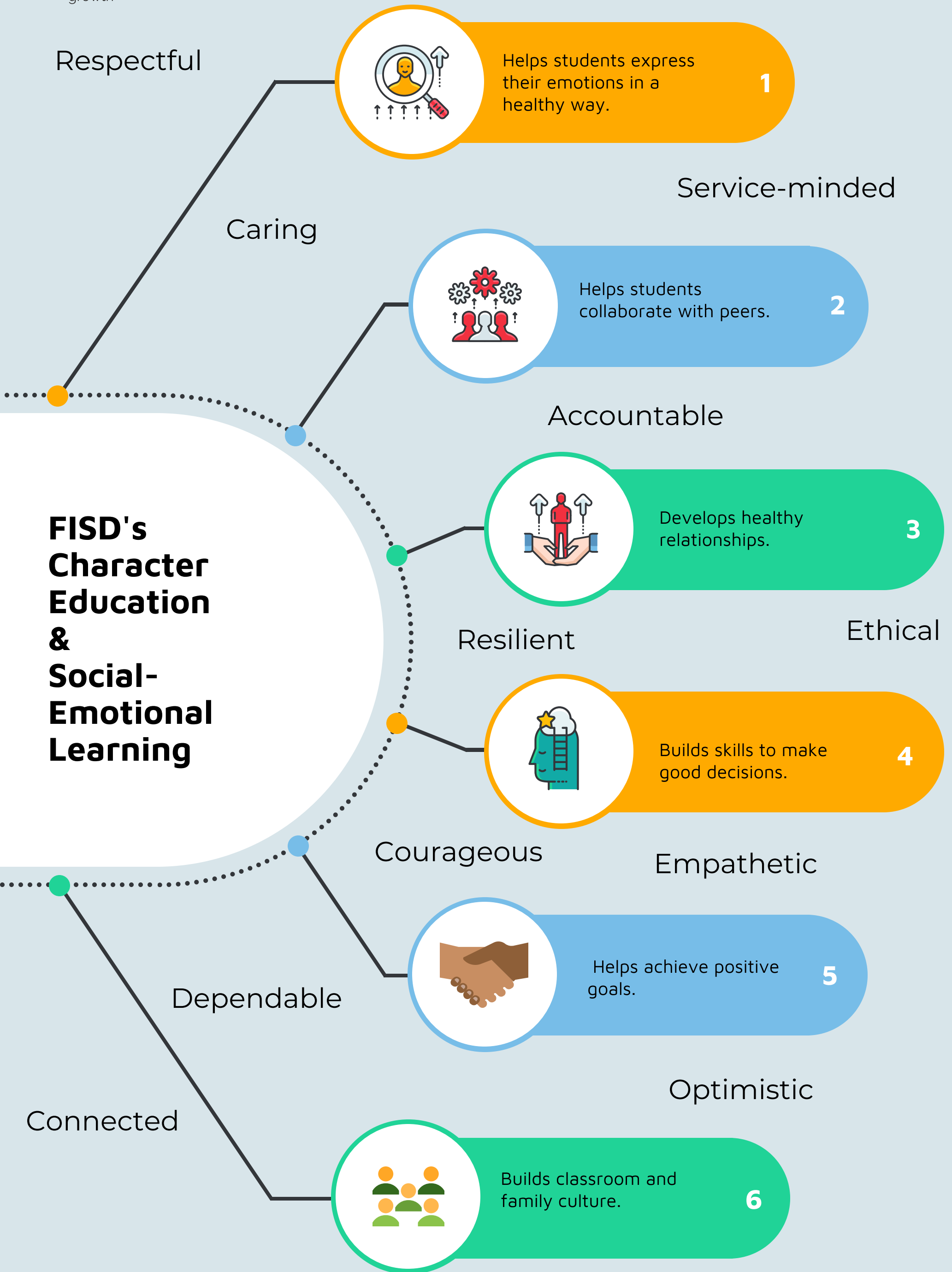


Friendswood ISD defines social and emotional learning as the processes through which children and adults acquire and effectively apply the knowledge, attitudes and skills necessary to: understand and manage emotions, set and achieve positive goals, feel and show empathy for others, establish and maintain healthy relationships, and make responsible decisions to foster lifelong learning and growth



Social - Emotional Learning in FISD is NOT connected to CRT, political, isolating, therapy, a one sized solution and does not take the place of academics.