

# HIGH-DEMAND ONLY

HIGH SCHOOL DIPLOMA OR EQUIVALENT AND SHORT-TERM TRAINING			
OCCUPATION (JOB TITLE)	ANNUAL OPENINGS	GROWTH (%)	WAGE RANGE
Amusement & Recreation Attendants	2,200	42.8	\$11–\$13
Animal Caretakers	1,605	39.2	\$11–\$14
Bartenders	3,295	37.7	\$11–\$18
Construction Laborers	3,555	9.2	\$17–\$23
Dining Room & Cafeteria Attendants	2,610	28.2	\$11–\$14
Dishwashers	2,045	24.2	\$11–\$14
Driver/Sales Workers	1,410	20.9	\$11–\$18
Exercise Trainers & Group Fitness Instructors	1,330	38.0	\$14–\$24
Fast Food & Counter Workers	26,480	18.1	\$11–\$13
Home Health & Personal Care Aides	11,555	25.2	\$11–\$14
Hosts & Hostesses, Rest., Lounge, & Coffee Shop	2,640	30.2	\$11–\$13
Industrial Truck & Tractor Operators	2,735	13.9	\$18–\$23
Laborers & Freight, Stock & Material Movers	12,540	13.4	\$14–\$18
Light Truck Drivers	3,465	11.9	\$14–\$23
Maids & Housekeeping Cleaners	3,640	14.2	\$12–\$15
Passenger Vehicle Drivers, Except Bus Drivers	2,870	18.2	\$14–\$19
Recreation Workers	2,450	15.6	\$12–\$17
Security Guards	3,755	13.8	\$13–\$18
Stockers & Order Fillers	12,150	13.4	\$12–\$18
Waiters & Waitresses	13,880	24.8	\$11–\$19

**Note:** These lists include occupations that show a favorable mix of projected long-term job growth, projected annual job openings, and median wages. They do not necessarily reflect current hiring demand. Hourly wage represents the 25th to 75th percentiles.

# HIGH-DEMAND AND HIGH-WAGE

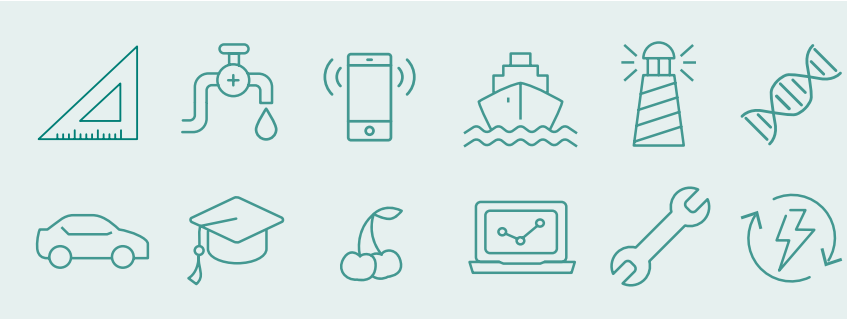
SCIENCE, TECHNOLOGY, ENGINEERING, AND MATHEMATICS (STEM)			
OCCUPATION (JOB TITLE)	ANNUAL OPENINGS	GROWTH (%)	WAGE RANGE
Architectural & Engineering Managers	860	8.2	\$58–\$78
Biological Science Teachers, Postsecondary	160	16.4	\$30–\$50*
Chemists	375	12.0	\$31–\$61
Civil Engineers	530	12.3	\$30–\$47
Computer & Information Systems Managers	925	7.6	\$49–\$78
Computer Systems Analysts	1,100	2.5	\$38–\$60
Computer User Support Specialists	1,710	5.6	\$18–\$29
Data Scientists & Mathematical Science Occupations	215	29.4	\$30–\$49
Electrical Engineers	645	8.2	\$37–\$58
Electronics Engineers, Except Computer	305	8.5	\$38–\$61
Engineering Teachers, Postsecondary	200	14.4	\$40–\$65*
Industrial Engineering Technologists & Technicians	360	10.0	\$23–\$30
Industrial Engineers	2,280	20.4	\$36–\$48
Information Security Analysts	235	28.2	\$30–\$51
Mechanical Engineering Technologists & Technicians	420	8.5	\$23–\$37
Mechanical Engineers	2,920	10.1	\$37–\$49
Medical Scientists, Except Epidemiologists	240	20.2	\$29–\$50
Operations Research Analysts	190	25.8	\$30–\$47
Sales Reps., Goods, Technical or Scientific	635	8.1	\$32–\$63
Software Developers & Quality Assurance Analysts	3,965	22.8	\$37–\$58

\* These occupational wages are typically published as annual wages. To calculate hourly wages for these occupations, annual wages were divided by 2,080 hours.



## MICHIGAN'S

# CAREER OUTLOOK THROUGH 2030



**STATE OF MICHIGAN**  
 Department of Technology, Management & Budget  
 Bureau of Labor Market Information and Strategic Initiatives

[www.Michigan.gov/LMI](http://www.Michigan.gov/LMI) @MILMISI

# HIGH-DEMAND AND HIGH-WAGE

POSTSECONDARY CERTIFICATE OR MODERATE-TERM TRAINING			
OCCUPATION (JOB TITLE)	ANNUAL OPENINGS	GROWTH (%)	WAGE RANGE
Aircraft Mechanics & Service Technicians	305	13.3	\$23–\$38
Audio & Video Technicians	285	18.8	\$19–\$29
CNC Tool Programmers	335	33.0	\$23–\$30
Computer User Support Specialists	1,710	5.6	\$18–\$29
Construction & Building Inspectors	535	3.9	\$22–\$30
Eligibility Interviewers, Government Programs	455	6.5	\$24–\$28
First-Line Supervisors of Police & Detectives	190	7.4	\$37–\$48
Flight Attendants	520	21.5	\$29–\$37*
Heavy & Tractor-Trailer Truck Drivers	7,635	12.7	\$19–\$29
Highway Maintenance Workers	380	7.8	\$20–\$24
Insurance Sales Agents	1,290	8.2	\$18–\$38
Licensed Practical & Licensed Vocational Nurses	1,115	6.8	\$23–\$29
Massage Therapists	485	29.6	\$23–\$37
Med. Dosimetrists & Health Technicians, All Other	690	8.5	\$18–\$28
Operating Engineers	1,020	7.5	\$23–\$31
Police & Sheriff's Patrol Officers	1,575	7.9	\$25–\$37
Production, Planning, & Expediting Clerks	1,035	8.4	\$18–\$29
Sales Reps., Services	3,010	9.9	\$19–\$38
Sales Reps., Goods, Nontechnical	5,230	9.5	\$22–\$46
Surgical Technologists	330	7.3	\$18–\$28

# HIGH-DEMAND AND HIGH-WAGE

ASSOCIATE DEGREE/LONG-TERM TRAINING/APPRENTICESHIPS			
OCCUPATION (JOB TITLE)	ANNUAL OPENINGS	GROWTH (%)	WAGE RANGE
Bus & Truck Mech. & Diesel Engine Specialists	855	12.7	\$19–\$29
Carpenters	2,175	1.9	\$18–\$29
Dental Hygienists	505	10.6	\$29–\$37
Diagnostic Medical Sonographers	245	18.1	\$29–\$37
Electricians	2,655	13.1	\$23–\$38
Firefighters	635	8.2	\$18–\$29
HVAC & Refrigeration Mechanics & Installers	970	9.2	\$19–\$30
Ind. Engineering Technologists & Technicians	360	10.0	\$23–\$30
Industrial Machinery Mechanics	2,650	28.2	\$23–\$30
Machinists	2,740	11.1	\$18–\$28
Mech. Engineering Technologists & Technicians	420	8.5	\$23–\$37
Millwrights	310	18.1	\$30–\$37
Mobile Heavy Equip. Mechanics, Except Engines	395	14.5	\$23–\$31
Occupational Therapy Assistants	220	37.5	\$23–\$29
Paralegals & Legal Assistants	965	17.5	\$22–\$30
Physical Therapist Assistants	535	30.6	\$23–\$30
Plumbers, Pipefitters, & Steamfitters	1,420	8.0	\$22–\$38
Radiologic Technologists & Technicians	555	6.9	\$23–\$30
Respiratory Therapists	345	22.8	\$28–\$30
Tool & Die Makers	1,045	2.6	\$23–\$37

# HIGH-DEMAND AND HIGH-WAGE

BACHELOR'S DEGREE OR HIGHER			
OCCUPATION (JOB TITLE)	ANNUAL OPENINGS	GROWTH (%)	WAGE RANGE
Accountants & Auditors	3,735	9.4	\$29–\$44
Child, Family, & School Social Workers	1,420	12.0	\$19–\$30
Financial Managers	1,485	17.6	\$47–\$78
General & Operations Managers	6,545	11.9	\$29–\$72
Human Resources Specialists	1,925	10.7	\$23–\$37
Industrial Engineers	2,280	20.4	\$36–\$48
Industrial Production Managers	930	10.1	\$39–\$63
Lawyers	1,080	11.6	\$37–\$75
Logisticians	1,150	29.7	\$29–\$48
Management Analysts	1,960	11.0	\$30–\$50
Market Research Analysts & Marketing Specialists	2,465	23.9	\$23–\$39
Mechanical Engineers	2,920	10.1	\$37–\$49
Medical & Health Services Managers	1,505	31.5	\$37–\$61
Nurse Practitioners	595	50.7	\$48–\$60
Physical Therapists	485	18.5	\$36–\$48
Physician Assistants	435	31.9	\$48–\$62
Project Management & Business Oper. Specialists	3,770	8.1	\$29–\$48
Registered Nurses	6,345	7.9	\$30–\$38
Software Developers & Quality Assurance Analysts	3,965	22.8	\$37–\$58
Substance, Behavioral, & Mental Health Counselors	1,025	21.3	\$19–\$29

\* These occupational wages are typically published as annual wages. To calculate hourly wages for these occupations, annual wages were divided by 2,080 hours.



Source: Bureau of Labor Market Information and Strategic Initiatives, Michigan Department of Technology, Management & Budget