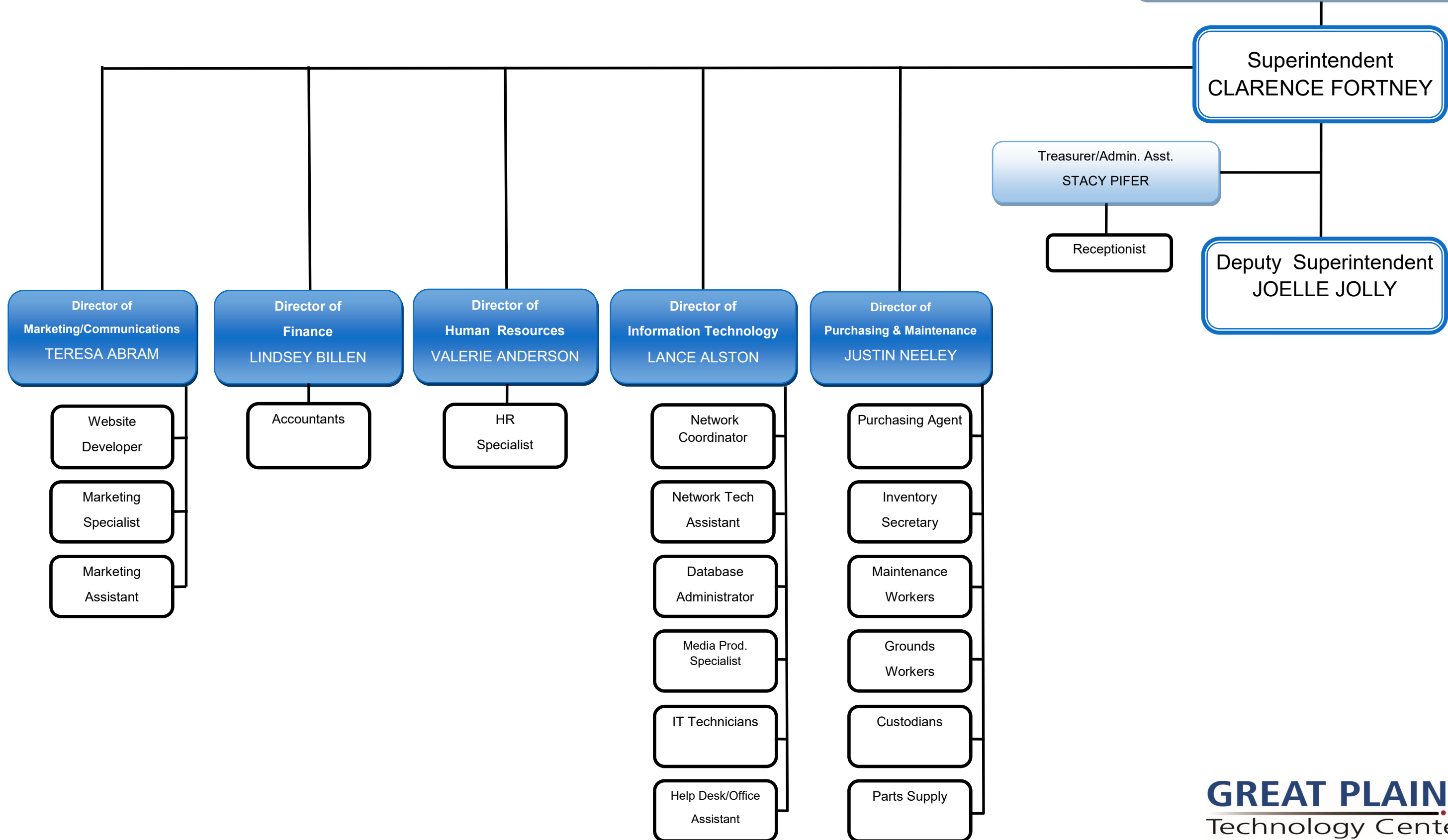


Board of Education



**Deputy Superintendent
Joelle Jolly**

**Executive Director of
Instructional Development (LAW)
JUSTIN McNEIL**

**Executive Director of
Business & Industry Services & Adult Career Development
MORGAN GOULD**

- Instructors
- ABE Coordinator ERICA STUCK
- Instructors*
- Counselor
- Secretaries
- Testing Ctr. Coordinator MIKE ARCHER
- Prof. Dev. Specialist
- Inst. Support Specialist
- Accred/Plan Coordinator
- Proctors
- Academic Ctr. Coord.
- Financial Aid Coordinator
- Disability Coordinator
- Counselors
- Employment Advisor
- Secretary
- Recruitment Specialist

**Director of
S.C.O.R.E & ABE
BLAKE THOMAS**

Assistant Director
MITCH DORRELL

- *S.C.O.R.E
- *Carpentry
- *Electrical

**Director of
Instructional Support
Services
BRANDON MAYER**

**Director of
Student Support
Services
COURTNEY FERGUSON**

Culinary Arts

**Director of
Instruction
JAMES BISHOP**

- *HVAC
- *AST I/II
- *Combination Collision Repair
- *Criminal Justice
- *Cyber Security
- *Digital Graphics & Photography
- *Firefighter
- *Information Technology
- *Medical Office/Financial Clerk
- *Teacher Prep
- *Network Administrator
- *Service Careers
- *Video Producer
- *Welding

**Director of
HSS and STEM
Education
BILL MATTHEY**

- Activities Coordinator
- Registrar
- Attendance Secretary
- Security Officers
- Bus Drivers

- EMS Prog. Coordinator
- Secretary
- Instructors*
- Pub. Safety Prog. Coord.

- LPN Nurse Coordinator KAREN SHIREY
- Asst. LPN Nurse Coord.

Surg. Tech Coordinator LIV ROCHA

- School Nurse
- STEM Instructors
- Biomedical Instructors
- Nursing Instructors
- Surg Tech. Instructor
- Medical Bldg. Manager
- Medical Bldg. Secretary

**Director of
Economic Development
KEITH BRIDGES**

- Business Center Coordinator CODY HOLT
- Cust. Training Coordinator CASSANDRA WILLRICH
- Safety Training Coordinator SHAWN JOHNSON
- Yield Coordinator JAMES REGAN

- Yield Production Manager
- Business Training Coordinator
- Agri Business Development Coordinator
- Small Business Development Coordinator
- Bid Assistance Coordinator
- Health and Safety Instructor
- Industrial Maintenance Instructors
- Courseware Specialist
- Fac/Transp.Cust. Service Assist.
- BIS Secretaries
- BDC Secretary

**Assistant Director
Adult Career Development
LINDA JAMISON**

- ACD Office Manager DEVON HICKS
- ACD Secretaries
- ACD Coordinators MARCY PENNINGTON/OPEN

Instructors

..... Denotes Matrix Supervision

**Deputy
Superintendent
Joelle Jolly**

**Executive Director of
Instructional Development (FRED)
KEN MCKEE**

Economic Development

Adult Career Development

Counselor

Instructors*

Secretary

Maintenance

Custodian

*Cosmetology

*Welding

*Multimedia

*Practical Nursing

*Carpentry

*Health Sciences