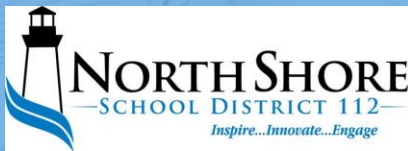


# VISION

What changes will we see?



Wight



YESTERDAY

# Capacity

?

**More than just seats in a room...**

- Core classrooms available
- Room size / number of students
- Site size / Traffic / Playspace
- Teaching & Learning style

TODAY & TOMORROW

9 Schools NOW					Capacity Relative to Number of Students Per Classroom									
		Core Classrooms	Sixth Day Enrollment		20	21	22	23	24	25	26	27	28	29
Braeside	K-5	13	269		260	273	286							
Indian Trail	K-5	23	430		460	483	506							
Oak Terrace	K-5	29	479		580	609	638							
Ravinia	K-5	13	226		260	273	286							
Red Oak	K-5	19	250		380	399	418							
Sherwood	K-5	20	376		400	420	440							
Wayne Thomas	K-5	20	324		400	420	440							
Edgewood Middle	6-8	27	791					621	648	675	702	729	756	783
Northwood Middle	6-8	21	516					483	504	525	546	567	588	609
Capacity Totals		185	3,661		2,740	2,877	3,014	1,104	1,152	1,200	1,248	1,296	1,344	1,392

Fall 2018 Sixth Day Enrollment:

K-5 (2,354) 6-8 (1,307) Total 3,661 students



8 Schools FUTURE					Capacity Relative to Number of Students Per Classroom									
		Core Classrooms	Target		20	21	22	23	24	25	26	27	28	29
Braeside	K-5	13	260		260	273	286							
Indian Trail	K-5	23	455		460	483	506							
Oak Terrace	K-5	29	466		580	609	638							
Ravinia	K-5	13	222		260	273	286							
Red Oak	K-5	31	615		620	651	682							
Wayne Thomas	K-5	20	331		400	420	440							
Edgewood Middle	6-8	40	950					920	960	1,000	1,040			
Northwood Middle	6-8	26	600					598	624	650	676			
Capacity Totals		195	3,899		2,580	2,709	2,838	1,518	1,584	1,650	1,716			

Fall 2018 Sixth Day Enrollment: K-5 (2,354) 6-8 (1,307) Total 3,661 students

Target Enrollment: K-5 (2,349) 6-8 (1,550) Total 3,899 students



# THE DNA OF A MODERN-LEARNING SCHOOL



## MEET NEEDS OF ALL LEARNERS

Agile classrooms  
Small group collaboration  
Non-traditional learning  
spaces




## DISCOVERY & EXPLORATION

STEM | Maker + CMA  
Learning Commons  
Independent work areas



## VISUAL & PERFORMING FINE ARTS

Acoustically appropriate  
Performance venues  
Arts embedded culture



# How your schools will support students preparing for an unknown future ?

*Optimize Learning Environment – IMPROVE CLASSROOMS*

*INFORMAL LEARNING ENVIRONMENTS outside of formal classroom*

*Robust LEARNING RESOURCE CENTERS – engaging hubs for learning*

*Improve MULTI-PURPOSE | CAFETERIA spaces and dining experience*

*Align vision for MAKER | STEM | CMA with better spaces*

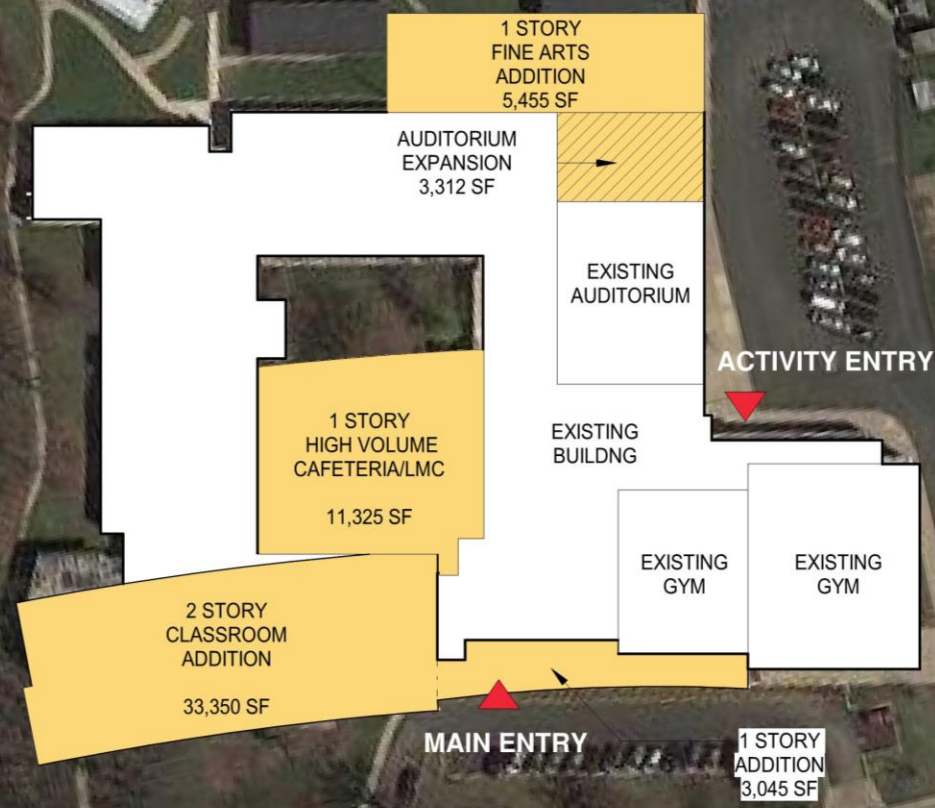
*PERFORMING ARTS auditorium spaces consistent with community*

*Maximize INDOOR AIR QUALITY for student health, comfort & focus*

## THE DNA OF A MODERN-LEARNING SCHOOL



SUMMIT AVE



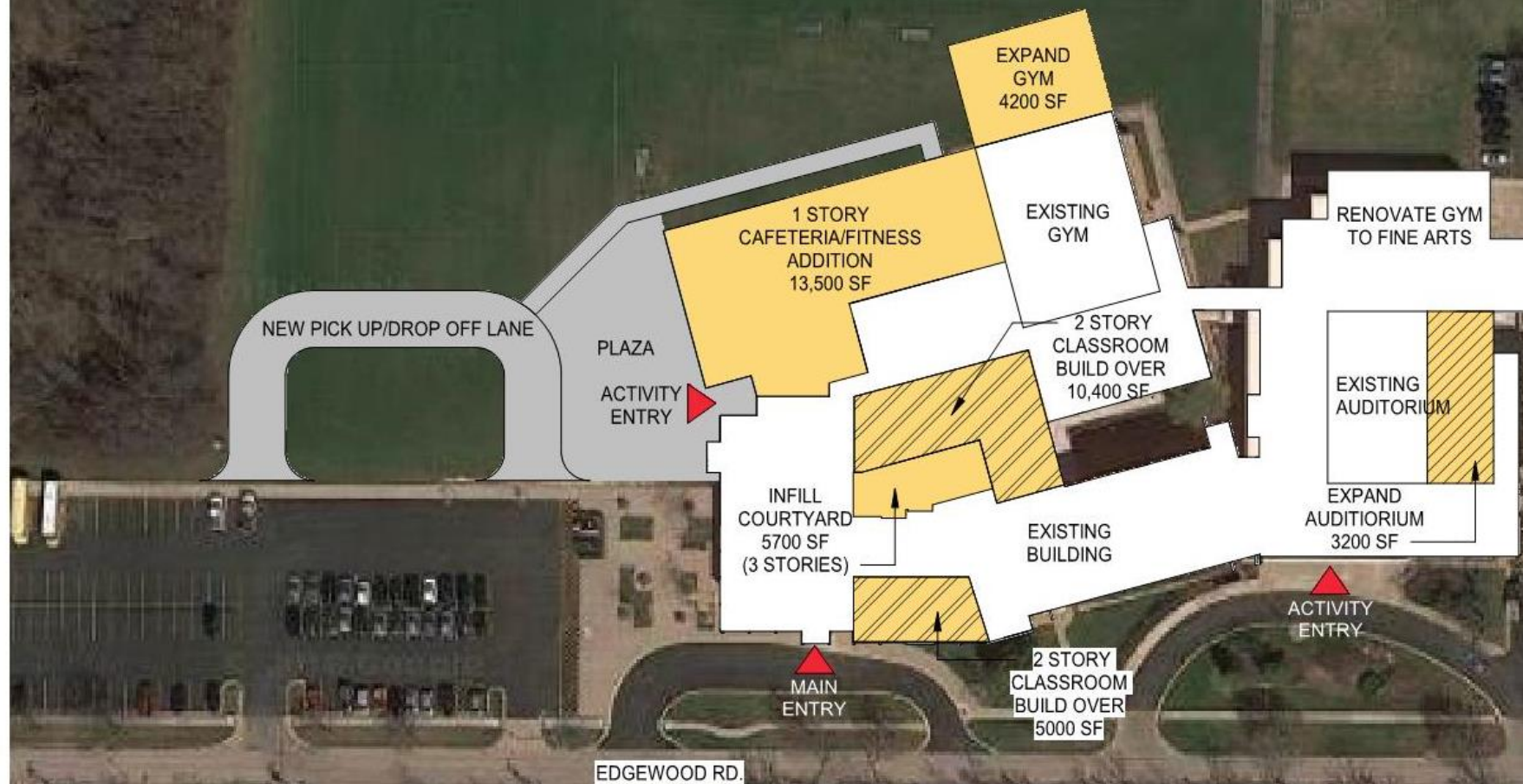
EXTEND PARKING

NORTH AVE

# NORTHWOOD MIDDLE SCHOOL



# EDGEWOOD MIDDLE SCHOOL





SITE PLAN-  
OPTION 1

EXISTING  
HARDSCAPE

# RED OAK ELEMENTARY SCHOOL

EXISTING  
PLAYGROUND

EXISTING  
PLAYGROUND

NEW DRIVE

EXISTING  
TENNIS COURTS

ACTIVITY  
ENTRY

2 STORY  
CLASSROOMS  
6,555 SF

1 STORY  
CAFETERIA/LMC  
3,443 SF

EXISTING  
59,090 SF

▲ MAIN ENTRY

BUS LANE

EXISTING  
PARKING

NEW PARKING

NEW PARKING

RED OAK LN





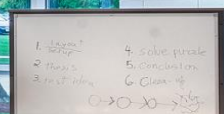


- ✓ Agile classrooms
- ✓ Small group collaboration
- ✓ Non traditional learning environment













- ✓ Learning everywhere
- ✓ Group collaboration



D112



POTENTIAL





D112



POTENTIAL



✓ Leverage all real estate



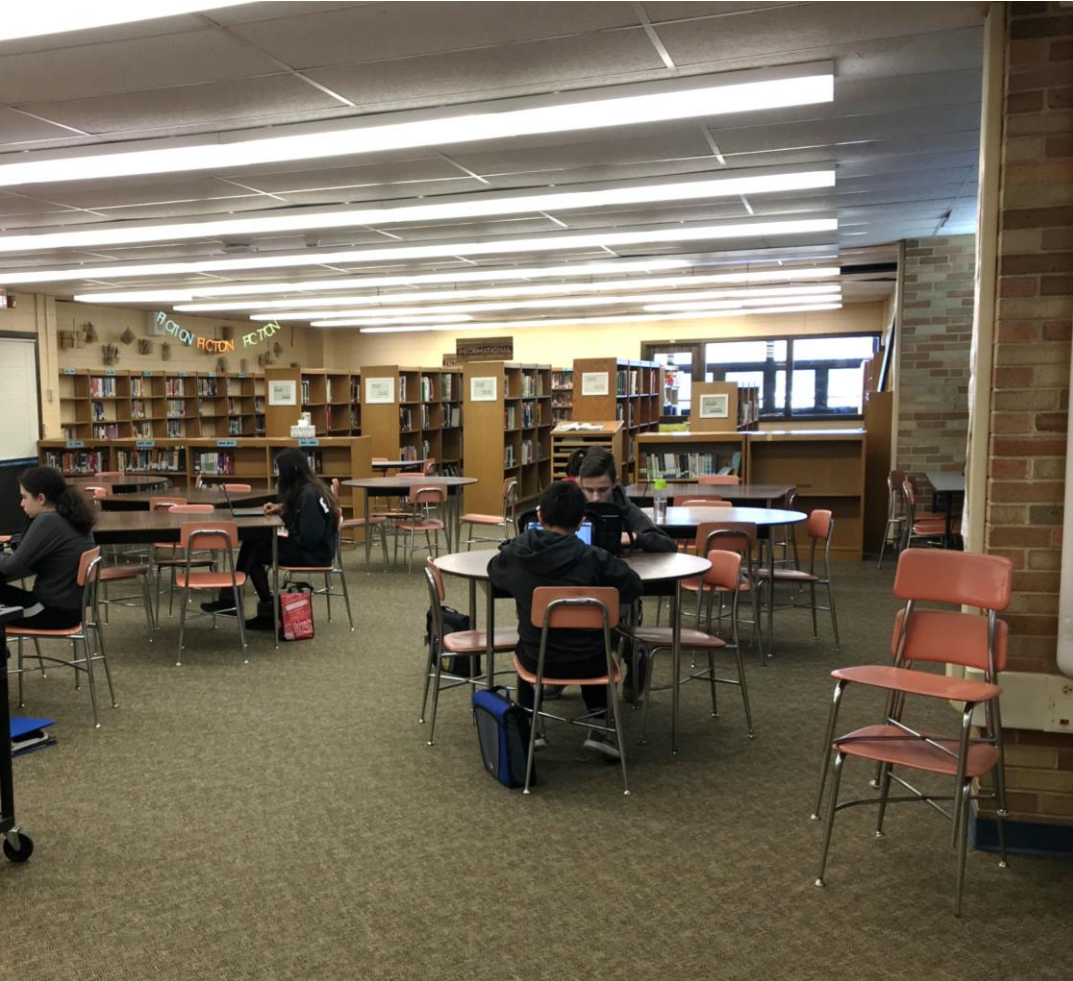


- ✓ **Project space**
- ✓ **Student support rooms**



- ✓ **Learning everywhere**
- ✓ **Group collaboration**





- ✓ NEW Learning Commons
- ✓ Engaging activity “hub” for students
- ✓ Support variety of exploration





INFO

LEARN

READ











- ✓ Community stair to connect classrooms to LMC / cafeterias









✓ Dining Space Connected to Learning Commons





Food service kitchen





- ✓ STE(A)M & Maker Project Space
- ✓ Support a variety exploration activity















✓ Appropriate fine arts spaces







✓ Performance auditorium space at Northwood and Edgewood for multi-use





✓ Enhanced Edgewood gym space with full - size BB court similar to Northwood





Daylight – Transparency – Indoor Air Quality