



26351 JUNIPERO SERRA ROAD
SAN JUAN CAPISTRANO, CA 92675

CEEB CODE: 053197

949.493.9307 / PHONE

949.493.9308 / FAX

JSERRA.ORG  

#LIONNATION

ADMINISTRATION

RICH MEYER

President

ERIC STROUPE

Principal

PAT REIDY

Vice President of Mission & Faith

DENISE PASCOE

Vice Principal of Academics

ZACHARY ECKERT

Vice Principal Student Formation & Leadership

COUNSELING DEPARTMENT

OLIVIA HUIE

Director of Counseling (A-B)
ohuie@jserra.org / ext. 1123

MYRA CASTRO

Director of University Relations & College Events
mcastro@jserra.org / ext. 7125

GARRETT ROLDAN

Academic and College Counselor (C-F)
grolدان@jserra.org / ext. 1135

JENNA NELSON

Academic and College Counselor (G-KI)
jnelson@jserra.org / ext. 1118

MICHELE MURPHY

Academic and College Counselor (Km-L)
mmurphy@jserra.org / ext. 1155

JASMINE VILLA-STOFKO

Academic and College Counselor (O-Sq)
jstofko@jserra.org / ext. 1116

MONICA CELAYA

Academic and College Counselor (Sr-Z)
mcelaya@jserra.org / ext. 1110

SHELLEY DEVER

Registrar
sdever@jserra.org / ext. 1156

JSERRA SCHOOL PROFILE 2022-2023

KEY ASPECTS OF THE SCHOOL

JSerra Catholic High School, established in 2003, is the first non-diocesan founded, private Roman Catholic high school in California and the fourth in the country. Located in historic San Juan Capistrano, CA, JSerra is in an ideal location between San Diego and Los Angeles. JSerra provides a Christian culture that builds up the whole student through robust intellectual development and innovative co-curricular programming combined with high-level athletic opportunities, all grounded in virtue-based character formation.

MISSION STATEMENT

JSerra is an independent Roman Catholic high school that encourages students to pursue personal and professional excellence in life. Guided by the teachings of the Catholic Church, we work in partnership with committed parents and inspirational teachers to form the faith, intellect, and character of our young men and women within a Christ-centered, sacrament-based learning environment.

ACCREDITATIONS AND MEMBERSHIPS

JSerra is accredited by the Western Association of Schools and Colleges (WASC) and the Western Catholic Education Association (WCEA). JSerra is a member of the College Board, the National Catholic Educational Association, Western Association of College Admissions Counseling (WACAC), and the National Association for College Admissions Counseling (NACAC).

THE CLASS OF 2022 PROFILE

294

SENIORS GRADUATED
FROM JSERRA IN 2022

\$20,171,993

TOTAL COLLEGE SCHOLARSHIPS
& FINANCIAL AID OFFERED
TO OUR GRADUATES AVERAGING

\$68,612

PER SENIOR

THE CLASS OF 2022 GAINED
ACCEPTANCES TO

280

PUBLIC & PRIVATE COLLEGES,
ART COLLEGES AND
FOREIGN UNIVERSITIES IN

40

STATES AND

5

COUNTRIES

51

CSF GOLD SEAL BEARERS

68

NHS MEMBERS

NATIONAL MERIT RECOGNITION

1

SEMIFINALIST

12

COMMENDED

STUDENT BODY 2022-2023

Admission is determined by entrance exam (HSPT), recommendations, and elementary school grades. JSerra receives approximately **1,000** applicants annually. Approximately **75%** of those who were admitted enrolled.

For the 2022-2023 school year:

30% of the student body receives financial grants/scholarships.

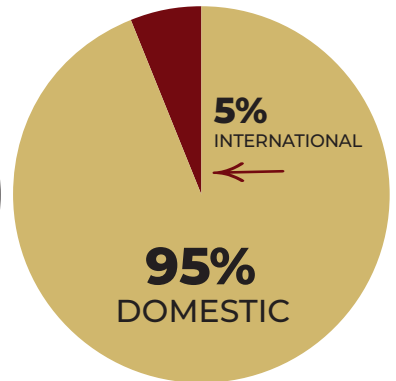
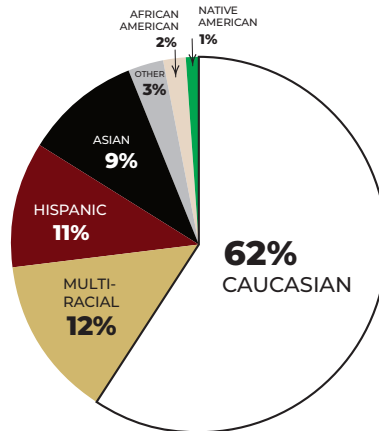
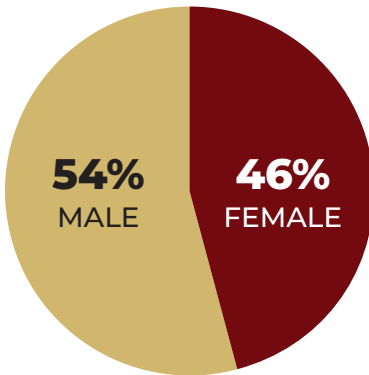
75 domestic public and private elementary schools are represented in the freshman class.

JSerra's international students come from **12 COUNTRIES:**

- Albania
- Germany
- Mexico
- China
- Hong Kong
- Slovakia
- Costa Rica
- Japan
- Sudan
- France
- South Korea
- United Kingdom

ENROLLMENT BY CLASS

- CLASS OF 2023 **296**
- CLASS OF 2024 **316**
- CLASS OF 2025 **340**
- CLASS OF 2026 **340**



CURRICULUM

The academic program is organized in a modified block schedule. Online classes taken will be denoted on our transcripts. Theology is included in our academic GPA and is considered a core academic class at JSerra. First Year Seminar is a required course for all students with the majority of the content covering logic and grammar. Students are not ranked at JSerra except for the valedictorian and salutatorian.

A student must complete 270 credits to graduate.

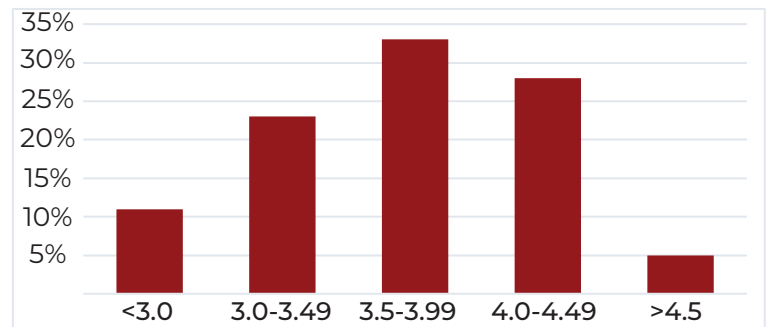
GRADUATION REQUIREMENTS INCLUDE:

Theology*	40 credits
English	40 credits
Math	30 credits
Science	30 credits
Social Studies	30 credits
World Language	20 credits
Visual & Performing Arts	10 credits
Physical Education	20 credits
First Year Seminar*	5 credits
Health	5 credits
Electives	40 credits

*Transfer students are exempt from completing the full requirement.

Students must also complete 80 hours of Christian Service (20 hours annually) by the time of graduation.

THE CLASS OF 2022 GPA



ACADEMIC MEAN Weighted **3.65** / Unweighted **3.38**

GRADING & GPA

The school year is divided into two semesters. Grades are weighted by one point for Honors and AP courses. JSerra assigns letter grades using a 4.0 system. Pluses and minuses do not affect the GPA.

- A = 90-100**
- B = 80-89**
- C = 70-79**
- D = 60-69**
- F = 0-59**



Honor Roll Qualifications (based on weighted academic GPA each semester)
 Principal's Honor Roll - 4.0 and above
 Honor Roll - 3.5-3.99

2022 SAT INFORMATION

In 2021-2022, **101** JSerra seniors took the SAT.

SUBJECT	JSERRA	STATE
ERW	608	527
Math	620	522
TOTAL	1,228	1,049

2022 ACT INFORMATION

In 2022, **56** JSerra seniors took the ACT.

SUBJECT	JSERRA	STATE
English	28.2	22.4
Math	27.0	22.3
Reading	27.5	23.0
Science	26.2	22.2
Composite	27.4	22.6

MAGNET PROGRAMS

Approximately 30% of our student body participates in a magnet program. Because all magnet programs require specialized courses per year, many of the magnet students must take online and/or summer courses to meet all graduation requirements. Magnet students spend many hours outside of class time to fulfill magnet requirements, whether it is visiting hospitals at five am, mock trials over weekends, or statewide and national competitions, all resulting in recognitions regionally and nationally. All magnet courses receive honors credit and only students in the magnet programs are allowed to take the specialized classes.

ARTS MAGNET

The Arts Magnet Program provides four years of pre-professional training in the Visual and Performing Arts, specifically, Choir, Dance, Drawing and Painting, Orchestra, and Theatre. Discipline-specific honors and AP courses are designed to develop students' skills to an advanced level and provide them with the foundation to pursue their art at the college level. Students can choose from a multitude of visual and performing arts classes in addition to the following extracurricular courses taken in the evenings, including:

- JAMS - JSerra Arts Magnet Singers
- JAM-ON - JSerra Arts Magnet

THE ENGINEERING MAGNET

The JSerra Engineering Magnet Program (EMP) adopts the curriculum of Project Lead the Way (PLTW), a leader in providing rigorous and innovative STEM education. Classes include:

- Introduction to Engineering
- Principles of Engineering
- Aerospace Engineering
- Civil Engineering
- Computer Information Manufacturing
- Computer Science

THE LAW MAGNET

The Pre Law Professional Magnet Program gives students access to the first year Law School curriculum. All courses are articulated through Saddleback College, giving students 18 units of college credit by the time of graduation. Classes include:

- Introduction to Law
- Legal Research and Writing
- Legal Aspects of Real Estate
- Criminal Law
- Constitutional Law
- Contract Law

HUMANITIES PROGRAM

Drawing on the great thinkers, writers, philosophers, and artists of Western Civilization, the program will form students' minds through an education of the heart. Humanities takes a thematic-historic approach that follows a four-year trajectory from the Ancients to Post-Modernism, studying the foundations, high points, and centrality of Christian culture and the Catholic worldview in forming an understanding of the human person. Focusing on readings in English and Theology from the Western canon and Christian culture, the program will seek to uncover the common thread that weaves all great ideas together: Christ revealed through the good, the true, and the beautiful.

THE DUPONT BUSINESS MAGNET

Founded in 2011, the DuPont Business Magnet Program has a relationship with the Paul Merage School of Business at UC Irvine. Courses are articulated through Saddleback College, providing students with 18 units of college credit. Classes include:

- Intro to Business
- Business Communications
- Accounting and Contract Law
- Sales and Marketing
- Capstone Project

THE MEDICAL MAGNET

Students in the Medical Magnet Program take the most rigorous math and science pathways available at JSerra and double up in science for four years. Classes include:

- Introduction to Health Sciences
- Medical Ethics
- Anatomy Physiology
- Concepts of Genetics
- Introduction to Neuroscience

2022 AP EXAM PASS RATES (Scores of 3 or higher)

SUBJECT	PASS RATE	# OF STUDENTS	# OF 5s
2D Art & Design	100%	11	3
Biology	94%	31	10
Calculus AB	90%	31	21
Calculus BC	92%	13	5
Chemistry	78%	18	0
Chinese Lang. & Cult.	94%	16	7
Comp. Sci A	100%	4	3
Comp. Sci. Principles*	78%	18	2
Drawing	100%	9	2
English Language	88%	18	14
English Literature	95%	51	19

Envir. Science	100%	49	20
European History	100%	35	15
French	10%	10	0
Macroeconomics	53%	83	6
Music Theory	80%	5	0
Physics 1	73%	22	5
Physics 2	88%	8	0
Physics C: Mechanics	88%	16	4
Spanish	85%	13	3
Statistics	64%	22	1
US Gov. & Politics	79%	33	5
US History	83%	69	17

AP EXAM FAST FACTS

673 AP exams taken by **344** students

Average Score **3.5**

Percent of students earning a 3 or higher: **79%**

Number of Students Earning a 5: **170**

Number of AP Classes in 2022-2023: **27**
(Includes FLVS Classes)

*No longer offering Comp. Sci Principles as an AP class in 2023

2022-2023 AP INFORMATION

JSerra offers **27 AP** courses.

Students must meet class and grade pre-requisites to be placed in AP courses, which include an A- in both semesters of the college prep level or a B- in both semesters of the prior honors/AP level. All students who enroll in AP courses are required to sit for the AP exam. We report scores for all students who sit for an AP exam.

121 AP SCHOLARS	34 AP SCHOLARS WITH HONORS	43 AP SCHOLARS WITH DISTINCTION
------------------------------	---	--

IN 2022, **673** EXAMS WERE TAKEN BY **344** STUDENTS
OVERALL, **79%** PASS RATE; **25%** EARNED A **5**

CLASS OF 2022 / DECISION DATA			
89%	4-YEAR COLLEGE	48%	IN-STATE
11%	2-YEAR COLLEGE	52%	OUT-OF-STATE
12% UC / 6% CSU / 11% CATHOLIC			
59% Applied Regular Decision / 41% Applied Early Action/Decision			

COLLEGE MATRICULATION FOR THE CLASS OF 2022

Students were accepted into over **277** different colleges & universities across the globe including Italy, France, Australia, and the United Kingdom.

American University
Arizona State University-Tempe
Baylor University
Belmont University
Benedictine College +
Biola University
Boise State University
Boston Conservatory at Berklee
California Baptist University
California Polytechnic State University-San Luis Obispo
California State Polytechnic University-Pomona
California State University-Long Beach
California State University-Northridge
California State University-San Marcos
Central Carolina Community College
Chapman University
Clemson University
Colorado Christian University
Colorado College
Colorado State University-Fort Collins
Concordia University-Irvine
Cuesta College
Embry-Riddle Aeronautical University-Prescott
Emory University
Franciscan University of Steubenville +
George Fox University
George Washington University
Golden West College
Gonzaga University +
High Point University
Holy Cross College +
Hope International University
Indiana University-Bloomington
Irvine Valley College
Ithaca College
John Cabot University
Laguna College of Art and Design
Lehigh University
Liverpool Institute for Performing Arts

Louisiana State University
Loyola Marymount University +
Michigan State University
Montana Technological University
New York University
Ohio State University-Main Campus
Oklahoma State University-Main Campus
Orange Coast College
Oregon State University
Pace University, New York City Campus
Pace University, Westchester Campus
Pepperdine University
Point Loma Nazarene University
Purdue University-Main Campus
Ringling College of Art and Design
Rose-Hulman Institute of Technology
Saddleback College
Saint Mary's College of California +
San Diego State University
San Jose State University
Santa Ana College
Santa Barbara City College
Santa Clara University +
Santa Monica College
Santiago Canyon College
Savannah College of Art & Design - SCAD
School of Visual Arts
Southern Methodist University
St Catherine University +
St. John's College
Tennessee Technological University
Texas Christian University
The American University of Paris
The New School
The University of Alabama
The University of Tampa
The University of Tennessee-Knoxville
Tulane University of Louisiana
United States Air Force Academy

United States Air Force Academy Preparatory School
University of Arizona
University of California-Berkeley
University of California-Davis
University of California-Irvine
University of California-Los Angeles
University of California-Merced
University of California-Riverside
University of California-San Diego
University of California-Santa Barbara
University of California-Santa Cruz
University of Dallas +
University of Georgia
University of Hawaii at Manoa
University of Illinois at Urbana-Champaign
University of Iowa
University of Michigan-Ann Arbor
University of Mississippi
University of Missouri-Columbia
University of Nevada-Las Vegas
University of New Mexico-Taos Campus
University of Notre Dame +
University of Oregon
University of San Diego +
University of San Francisco +
University of South Carolina-Columbia
University of Southern California
University of Sydney
University of Utah
University of Washington-Seattle Campus
University of Wisconsin-Madison
Vanderbilt University
Vanguard University of Southern California
Washington College
Western Colorado University
Westmont College
Worcester Polytechnic Institute

BY THE NUMBERS

16:1

STUDENT-TO-TEACHER
RATIO

20.2

AVERAGE CLASS SIZE

23

MEDIAN CLASS SIZE

1228

AVERAGE SAT SCORE

5

MAGNET PROGRAMS

ARTS / BUSINESS
ENGINEERING / LAW / MEDICAL

83%

FACULTY HOLD
ADVANCED DEGREES

6

ACADEMIC & COLLEGE
COUNSELORS

+ Catholic School