



Welcome



TOPICAL TOWN HALLS

Introductions

Ground Rules

Safety & Security Presentation

Discussion



**TOPICAL
TOWN HALLS**

INTRODUCTIONS

Participants

Molly May

Assistant Superintendent,
Curriculum, Instruction & Assessment

Jeremy Trimble

Assistant Superintendent,
Operations & Planning



**TOPICAL
TOWN HALLS**



Moderator

Erik Qualman

Parent, Author,

Motivational Speaker



TOPICAL
TOWN HALLS



**TOPICAL
TOWN HALLS**

GROUND RULES

Ground Rules



**TOPICAL
TOWN HALLS**

- Let everyone participate.
- Listen with an open mind.
- Disagree, politely and openly, without being disagreeable.
- Keep comments or questions brief and on topic.
- Respectfully challenge the idea, not the person.



**TOPICAL
TOWN HALLS**

BACKGROUND

Background

☐ **Prevention, Intervention, and Mitigation**

- Counseling Services
- Direct Student Support
- Professional Learning
- Parental Supports
- Monitoring

☐ **Preparedness, Response, and Recovery**

- Protocols and Drills
- Staffing
- Physical Security Measures

☐ **New Regulations/Mandates**

- Texas Education Agency (TEA) and Texas School Safety Center (TxSSC)



**TOPICAL
TOWN HALLS**

Background

☐ **Prevention, Intervention, and Mitigation**

- Counseling Services
- Direct Student Support
- Professional Learning
- Parental Supports
- Monitoring

☐ **Preparedness, Response, and Recovery**

- Protocols and Drills
- Staffing
- Physical Security Measures

☐ **New Regulations/Mandates**

- Texas Education Agency (TEA) and Texas School Safety Center (TxSSC)



**TOPICAL
TOWN HALLS**

Counseling & Mental Health Support

Elementary Schools:

1 school counselor
.5 school based therapist
Licensed Specialist in School Psychology (LSSP)

Float - 1 diagnostician & 2 LSSP Interns

Middle Schools:

3 school counselors
.5 school based therapist
1 LSSP

High School:

7 school counselors
2.5 full-time school based therapists
3 LSSPs
.5 Special Education counselor



**TOPICAL
TOWN HALLS**

Direct Student Support

- **Classroom guidance lessons:** relationship building, acceptance, digital citizenship, personal safety - including social media, stress and anxiety management
- **Small groups:** Various emerging topics (divorce, death in the family, etc)
- Individual counseling & crisis intervention
- Expanded DAEP counseling services through Austin Family Counseling
- TCHATT telehealth partnership with Dell Medical School (starting WHS - plans to expand)
- Awareness of national crisis hotline change to 988
- Academic support guidance



Professional Learning

- **Safe Schools** - mental health, suicide, bullying, human trafficking
- **Trauma Informed Classrooms**
- **Mental Health Overview**
- **Austin Family Counseling** - peer to peer support groups
- **Solid Roots** - Proactive behavioral interventions (elementary campuses)
- **Social Thinking** - Strategies for teaching social behaviors



Parental Support

- **Speaker Series**
- **Parent peer support group - NAMI**
- **3rd party webinars, resources, meetings**
- **SSHAC subcommittee (2022 -23)**
- **Faith leaders connections**
- **Emergent issue communication: Fentanyl**



Reporting Mechanisms/Intervention

- **Behavioral Threat Assessment** - A process to identify students who pose a risk of harm to themselves or others

Eanes ISD Team - Assessment and Care Team (ACT)

- Required by Senate Bill 11 and widely known best practice
- Core team with expertise in areas such as mental health, law enforcement, counseling, curriculum, and special education

- **Monitoring**
 - Quick Report
 - Gaggle



TOPICAL
TOWN HALLS

Background

☐ **Prevention, Intervention, and Mitigation**

- Counseling Services
- Direct Student Support
- Professional Learning
- Parental Supports
- Monitoring

☐ **Preparedness, Response, and Recovery**

- Protocols and Drills
- Staffing
- Physical Security Measures

☐ **New Regulations/Mandates**

- Texas Education Agency (TEA) and Texas School Safety Center (TxSSC)



**TOPICAL
TOWN HALLS**

Background

☐ Prevention, Intervention, and Mitigation

- Counseling Services
- Direct Student Support
- Professional Learning
- Parental Supports
- Monitoring

☐ Preparedness, Response, and Recovery

- Protocols and Drills
- Staffing
- Physical Security Measures

☐ New Regulations/Mandates

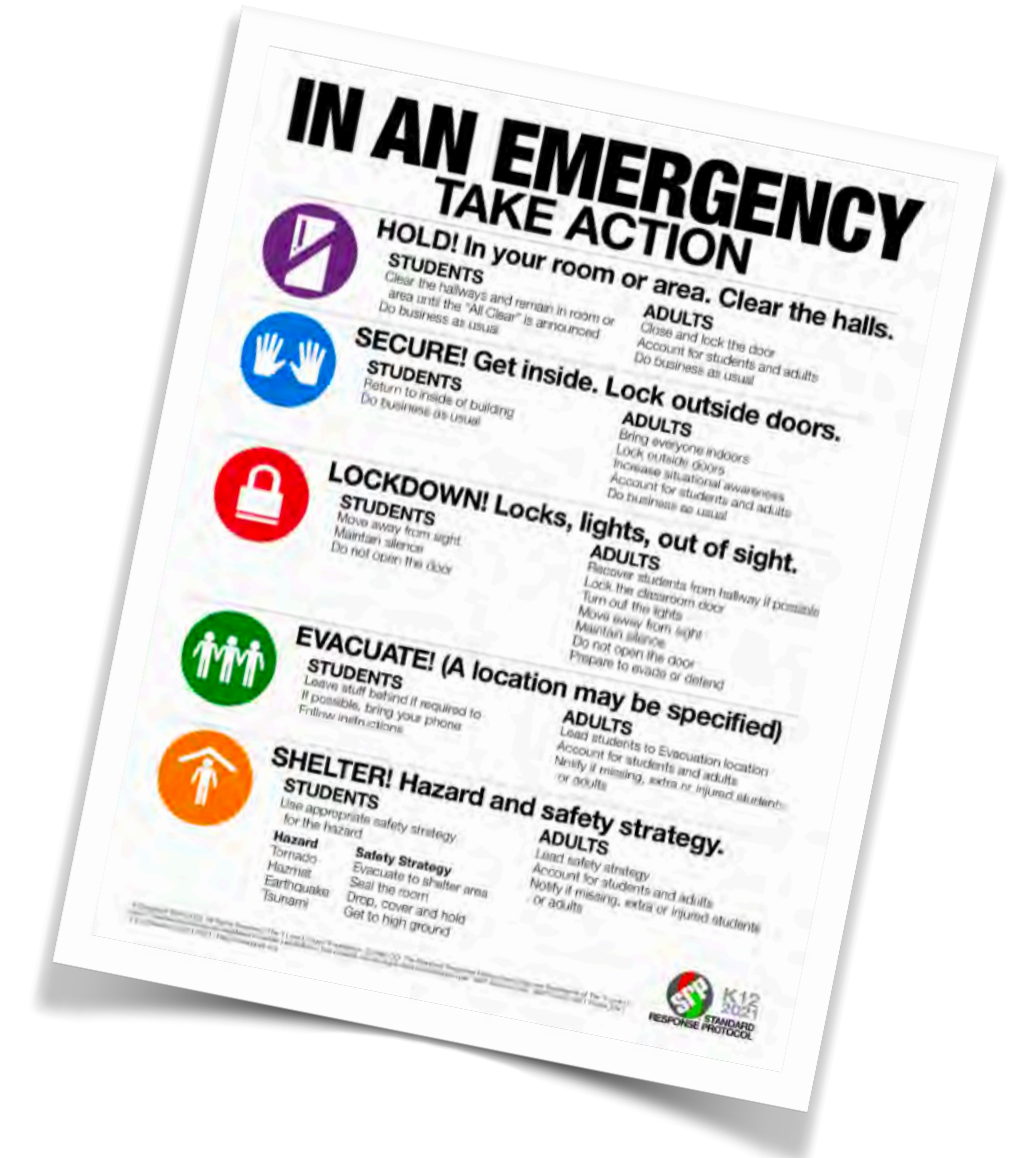
- Texas Education Agency (TEA) and Texas School Safety Center (TxSSC)



TOPICAL
TOWN HALLS

Preparedness, Response, Recovery

- **Lockdown Drills**
 - One required per semester
 - Drills will involve law enforcement as much as possible
- **Standard Response Protocol (SRP)**
 - In use for several years
 - All staff and students are trained on SRP every year
- **Standard Reunification Method (SRM)**
 - In the event of a critical incident, process to reunite students and parents
 - Conducted a drill with the iLoveUGuys foundation last year at WHS



TOPICAL
TOWN HALLS

Preparedness, Response, Recovery



Preparedness, Response, Recovery



- Law enforcement relationships
- High school security personnel
- Event security
- Campus issues related to potential criminal behavior or mental health crisis.
- Resides at HCMS, additionally serving ATS, CCE, FTE, VVE



- Employee Injuries/Worker's Comp
- Long-term safety strategies
- Kaseware (Training, etc.)
- Behavioral threat assessment
- Resides at WRMS, additionally serving BCE, BPE, EE

Preparedness, Response, Recovery

- **Actions *(Previously Implemented)*:**
 - Raptor visitor management system
 - Secured entry vestibules and entry buzz-in systems
 - Two-way Communication Radio System Replacement
 - Smart Tag system increases safety during transportation and dismissal procedures



Preparedness, Response, Recovery



TOPICAL
TOWN HALLS

2019 BOND - \$8M

- Perimeter fencing/barriers
- Chap Court entry secure vestibule
- Campus emergency notification systems
- Security cameras & access controls
- Cyber security infrastructure
- Fire alarm systems



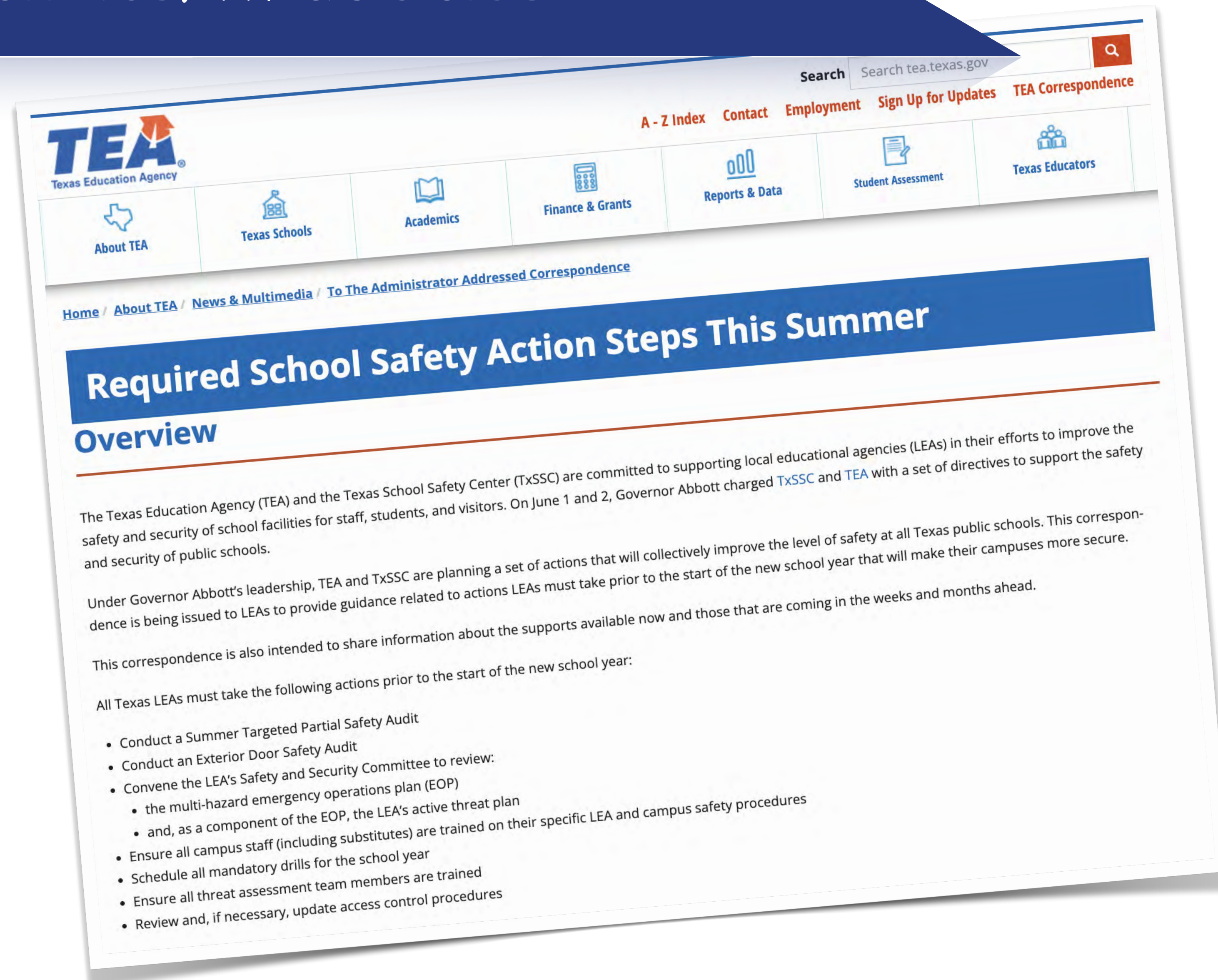
Preparedness, Response, Recovery

- **Actions *(In-process of implementation)*:**
 - Creation of Collaborative Response Graphic Maps (District & First Responder Access)
 - Additional property perimeter fencing
 - Additional security cameras
 - Safety and Security window film at campus main entrances
 - Exterior door prop alarm sounders (Phase I)
- **Actions *(Planned for implementation)*:**
 - Exterior door prop alarm sounders (Phase II) Responder Access)
 - New classroom door hardware



TOPICAL
TOWN HALLS

New Regulations/Mandates



The screenshot shows the Texas Education Agency (TEA) website. The header includes the TEA logo, a search bar, and navigation links: A - Z Index, Contact, Employment, Sign Up for Updates, and TEA Correspondence. Below the header is a menu with icons for About TEA, Texas Schools, Academics, Finance & Grants, Reports & Data, Student Assessment, and Texas Educators. The main content area features a blue banner with the title 'Required School Safety Action Steps This Summer' and a sub-header 'Overview'. The text explains that TEA and the Texas School Safety Center (TxSSC) are committed to supporting local educational agencies (LEAs) in improving the safety and security of school facilities. It mentions that Governor Abbott charged TxSSC and TEA with a set of directives to support the safety and security of public schools. The text also states that TEA and TxSSC are planning a set of actions that will collectively improve the level of safety at all Texas public schools. This correspondence is being issued to LEAs to provide guidance related to actions LEAs must take prior to the start of the new school year that will make their campuses more secure. This correspondence is also intended to share information about the supports available now and those that are coming in the weeks and months ahead. All Texas LEAs must take the following actions prior to the start of the new school year:

- Conduct a Summer Targeted Partial Safety Audit
- Conduct an Exterior Door Safety Audit
- Convene the LEA's Safety and Security Committee to review:
 - the multi-hazard emergency operations plan (EOP)
 - and, as a component of the EOP, the LEA's active threat plan
- Ensure all campus staff (including substitutes) are trained on their specific LEA and campus safety procedures
- Schedule all mandatory drills for the school year
- Ensure all threat assessment team members are trained
- Review and, if necessary, update access control procedures



TOPICAL
TOWN HALLS

Background

☐ **Prevention, Intervention, and Mitigation**

- Counseling Services
- Direct Student Support
- Professional Learning
- Parental Supports
- Monitoring

☐ **Preparedness, Response, and Recovery**

- Protocols and Drills
- Staffing
- Physical Security Measures

☐ **New Regulations/Mandates**

- Texas Education Agency (TEA) and Texas School Safety Center (TxSSC)



**TOPICAL
TOWN HALLS**

Participants

Molly May

Assistant Superintendent,
Curriculum, Instruction & Assessment
MMay@eanesisd.net

Jeremy Trimble

Assistant Superintendent,
Operations & Planning
JTrimble@eanesisd.net



**TOPICAL
TOWN HALLS**

Upcoming Town Halls

NOVEMBER 10


FEBRUARY 9

APRIL 20



TOPICAL
TOWN HALLS

Resources

**EANES**
WESTLAKE
INNOVATIVE SCHOOL DISTRICT

OUR DISTRICTACADEMICSBOARDDEPARTMENTS (active)PARENTSCOMMUNITYCAREERS

Safety (active)AlertsConduct on School PropertyEmergency PlanningEnvironmental and ComplianceInclement Weather/School ClosingsSecurity HotlinesStudent Safety

Home > Departments > Safety

Safety

A critical component of safe schools is uniform classroom response to any incident. Weather events, fires, accidents, intruders and other threats to student safety are scenarios that are planned and trained for by school and district staff.

Eanes ISD adopted the **Standard Response Protocol (SRP)** in 2018. SRP is based not on individual scenarios but on the response to any given situation. SRP is comprised of the following actions:

- **Hold** in your room or area and do business as usual. Clear the halls.
- **Secure** is followed by the Directive: "Get Inside. Lock Outside Doors" and is the protocol used to safeguard students in the building.
- **Lockdown** is followed by "Locks, Lights, Out of Sight" and is the protocol used to secure individual rooms and common areas.
- **Evacuate** is always followed by a location, and is used to move students and staff from one location to a different building.
- **Shelter** is always followed by a type and a method and is the protocol for group and self protection.


By standardizing the vocabulary, all stakeholders can understand the response and status of the event. For students, this provides continuity of expectations and actions throughout their educational career. For teachers, this becomes a simpler process. For first responders, the common vocabulary and protocols establish a greater predictability that persists through any incident. Parents can easily understand the practices and can reinforce the protocol. Additionally, this protocol establishes a common determination when an unforeseen event occurs.

Below is the SRP poster, which is posted in classrooms and common areas throughout all of our schools and buildings.

MATTHEW GREER
Director, Safety & Risk Management
mgreer@eanesisd.net

BRENT (BK) KELLY
Director, Safety & Security
bkelly@eanesisd.net




**EANES**
WESTLAKE
INNOVATIVE SCHOOL DISTRICT

OUR DISTRICTACADEMICSBOARDDEPARTMENTS (active)PARENTSCOMMUNITYCAREERS

Café Series


We are introducing the Café Series, events and opportunities to connect with Eanes ISD in formal and informal ways. See behind-the-scenes daily life in the district via our social media and video vignettes; join district staff in conversations at campuses by attending Staff/Parent Conversations (formerly State of the District presentations); engage in respectful dialogue as we bring Board Meeting topics out of the formal structure and discuss in a Town Hall setting. Help connect our community and join in on the conversation!



Updates

Topical Town Halls: Safety & Security, Sept 15


Follow @EanesISD



Eanes ISD 2d

Honoring
September 11, 2022
PATRIOT DAY
NATIONAL DAY OF SERVICE & REMEMBRANCE

8



**TOPICAL
TOWN HALLS**

Board meeting topics are explored in open forums specific to local and national interests. From safety & security to budgets or library books, the public can interact with school district experts to hear positions, ask questions and better grasp the gravity of topics that transcend the classroom.

[See schedule](#)



**TOPICAL
TOWN HALLS**

DISCUSSION

Ground Rules



**TOPICAL
TOWN HALLS**

- Let everyone participate.
- Listen with an open mind.
- Disagree, politely and openly, without being disagreeable.
- Keep comments or questions brief and on topic.
- Respectfully challenge the idea, not the person.

Thank You!

