

BOND UPDATE #173

9.16.22

Here's what is going on with our bond projects.

Enjoy!

Kristi

1. Work on the FHS campus has continued to progress during the past week. Some of the highlights are outlined below:

Auxiliary Gym and Kitchen

- The final finishes such as wall panels, padding, scoreboards and shot clocks were completed in the Auxiliary Gym this week. Soon, the wood flooring will be delivered and acclimate to its new environment over the next few weeks.
- In the kitchen area, the substructure that will carry the kitchen hoods, ceiling, lights and fire sprinklers was installed this week. Next week, crews will start framing walls and installing the mechanical and electrical infrastructure.

Academic Wing & Commons

- Ceiling grid and cabinet installation is underway on the third floor, and crews are making good progress.
- Light fixtures are almost complete on the second floor.
- Glass installation is ongoing on the second floor. It's looking good so far!
- Bathroom partitions and accessories are nearly finished on the second floor and will soon begin on the third floor.
- Elevator installation is ongoing and making good progress. The elevator cab is finished, and crews are installing the control wiring. Soon, the final start-up of the elevator will occur.
- We have pinned down a date for the final flooring work to start in the Academic Wing: October 10. This will mark a major milestone in the construction!

CTE Village

- Metal siding is underway on the Agriculture Science building. It's looking sharp! Soon, the interior wall framing will begin.

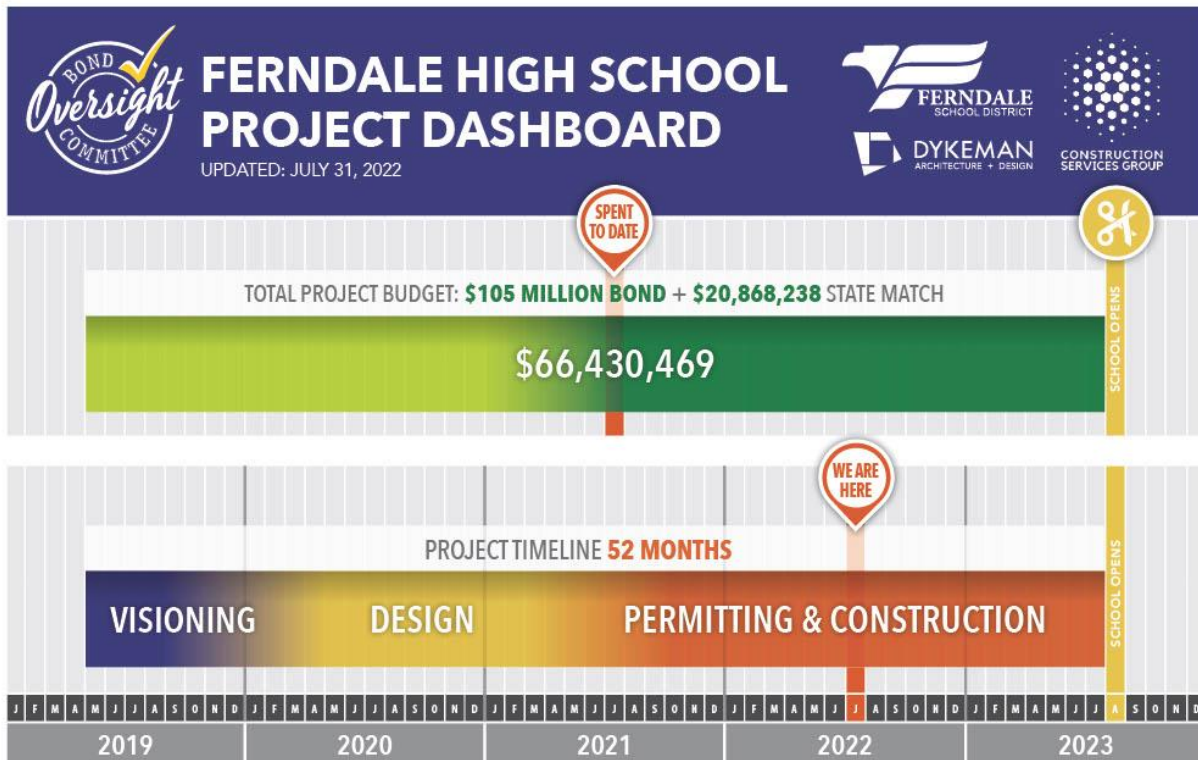
Site Work

- Crews continue to place gravel over the underground stormwater detention system north of the new gym. Underground electrical wiring is also being installed in the area, which allows crews to start building curbs and gutters

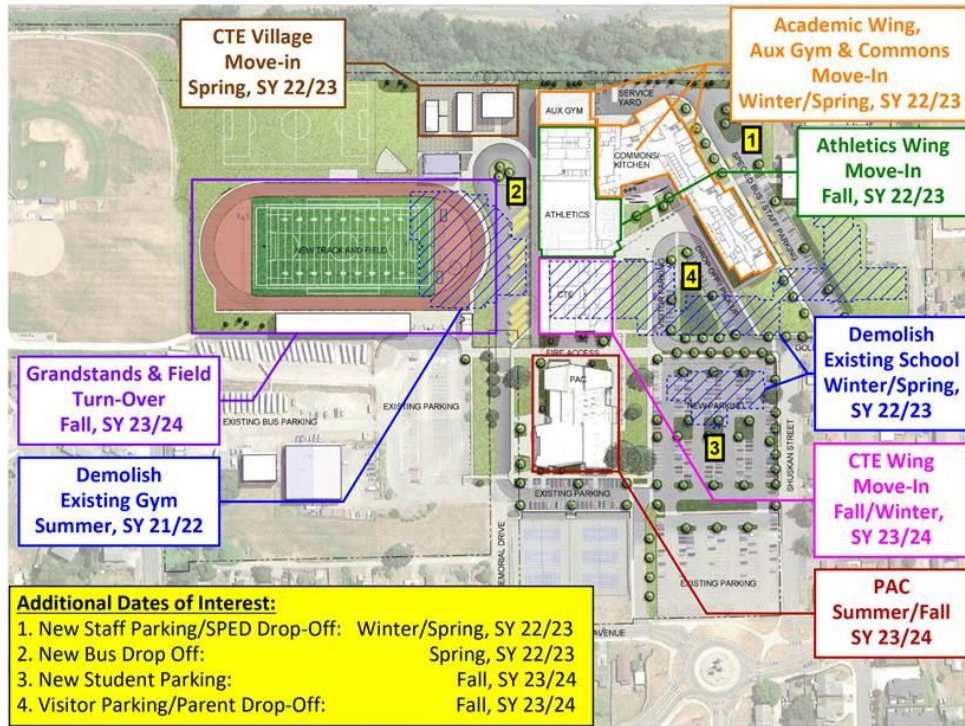
later this month. By the middle of October, this area should hopefully be paved with asphalt.

- Crews are forming and pouring the curbs and gutters in the new staff parking area south of the Academic Wing. This area will also be ready for paving in mid-October.
- The service entrance area to the east of the kitchen is being prepared for final asphalt pavement.

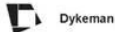
- At the end of this week’s update, you will find several photos of the Ferndale High School site with captions. You can also find more photos on the district website – including daytime pictures of construction taken every two hours, every day – at the following link: [Bond 2019 - Ferndale School District \(ferndalesd.org\)](http://ferndalesd.org)
- Below is the FHS project timeline as of July 31. It shows how much of our bond funding we have spent so far and how far along we are in building the new campus.



- Below is a map showing the various components of the new FHS campus and when they’ll be completed.



FHS Move-In Plan



If you have questions or comments about any of the content of this update, please feel free to reach out to me or one of my colleagues.

Kristi



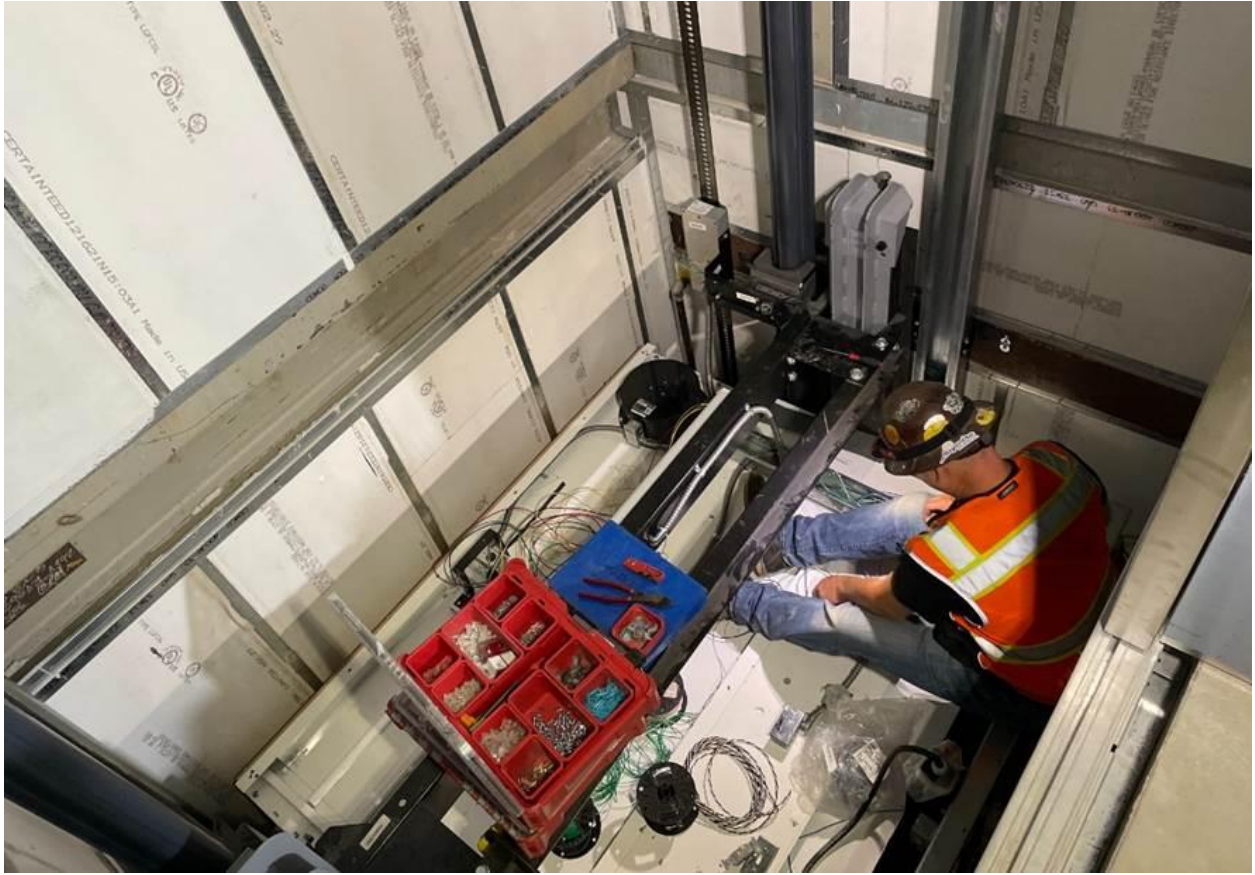
Scoreboard installation in the Auxiliary Gym



Sound absorbing panels and wall pad installation in the Auxiliary Gym



Substructure installation in the kitchen area. This structure will support the kitchen hoods, ceilings, lights and fire sprinkler system.



Elevator cab control wire installation



Metal siding installation at the Agriculture Science building



Pouring of sidewalks around the staff parking area south of the Academic Wing



Pouring of curb and gutters around the staff parking area south of the Academic Wing



Final prep work in the service yard east of the kitchen area