



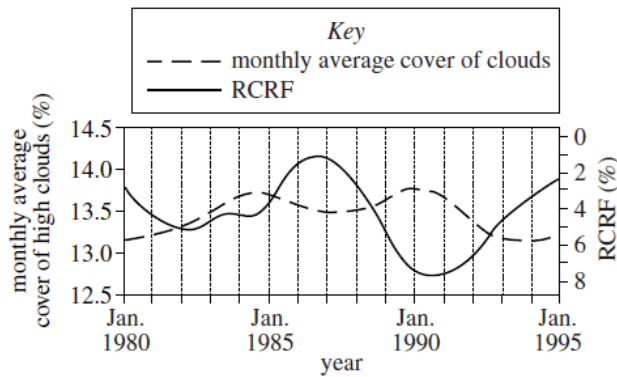
Student Learning Experienced Differently
Cumberland County Schools' Non-Traditional Instruction Program

SLED DAY #8—GRADE LEVEL: 10

A TOTAL OF THREE ACTIVITIES SHOULD BE COMPLETED.



SCIENCE



The percent of Earth's surface covered by high clouds in January 1987 was closest to what monthly average cover of high clouds as a %?

Write your answer on a separate sheet of paper.

MATH

Write a paragraph on a separate sheet of paper explaining how you arrived at your answer choice.

Question 1: Simplify the following expression:

$$t^2 - 59t + 54 - 82t^2 + 60t$$

Question 2: The consecutive integers add up to 447.

What is the value of x?

$$\begin{matrix} x - 2 \\ x - 1 \\ x \end{matrix}$$

$$x + 1$$

$$x + 2$$

$$x + 3$$

ENGLISH

Find an article in a newspaper, magazine, or online. Read the article, then on a separate sheet of paper write a half page summary that includes:

- The author's name and the title of the article
- A statement of the article's main idea
- At least three pieces of evidence the author uses to support the main idea
- Your reaction to the article

ARTS/HUMANITIES

Looking around outside your home, find an object and create a stippling drawing with pen. This can be done on notebook paper.

A stippling is a pen or ink drawing technique that uses small dots to build up the value needed to create the illusion of form.

Example:



TECHNOLOGY

Dual Credit: Only applies to students who are taking Dual Credit classes during the time of the SLED day. Must provide documentation of the work completed. This option can be used for the number of Dual Credit courses a student is enrolled in.

Read 180/Math 180: Only applies to students who are currently enrolled in the Read 180/Math 180 program. This option can only be used once per SLED day.

Apex Learning: Only applies to students enrolled in Apex courses. This option can be used for the number of Apex courses a student is enrolled in.

SOCIAL STUDIES

If people had YouTube or Tiktok in 1912, what would they be posting videos of? Explain your reasoning in at least a half page on a separate sheet of paper.

Activities Based on Student Prior Knowledge