

Reevaluation Process for Students who are Deaf or Hard of Hearing

How to use this document:

This document may not account for every situation given that each student with a hearing related disability is unique and varied. Always follow district guidelines and procedures. For clarification, consult with the district compliance team.

Refer to the flowchart for assistance with navigating the reevaluation process for students with hearing related disabilities. The numbers in parentheses in some of the boxes refer to additional explanatory information on the addendum page.

The **green** boxes correspond to "GO", meaning the process should move forward. The **orange** boxes indicate the necessity for further action before proceeding. A **red** line means "STOP", no further action is needed.

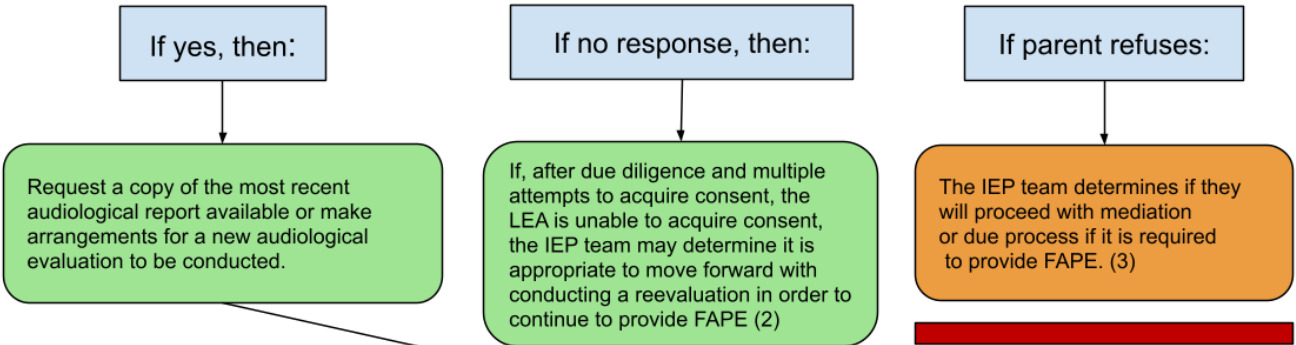
Resources:

- Rule 6A-6.03013, Florida Administrative Code (F.A.C.), [Exceptional Student Educational Eligibility for Students Who Are Deaf or Hard of Hearing](#)
- Rule 6A-6.0331, F.A.C., [General Education Intervention Procedures, Evaluation, Determination of Eligibility, Reevaluation and the Provision of Exceptional Student Education Services](#)
- Rule 6A-6.03022, F.A.C., [Exceptional Student Educational Eligibility for Students with Dual Sensory Impairments](#)
- [34 CFR §300.306\(a\)\(2\), IDEA, 2004](#)

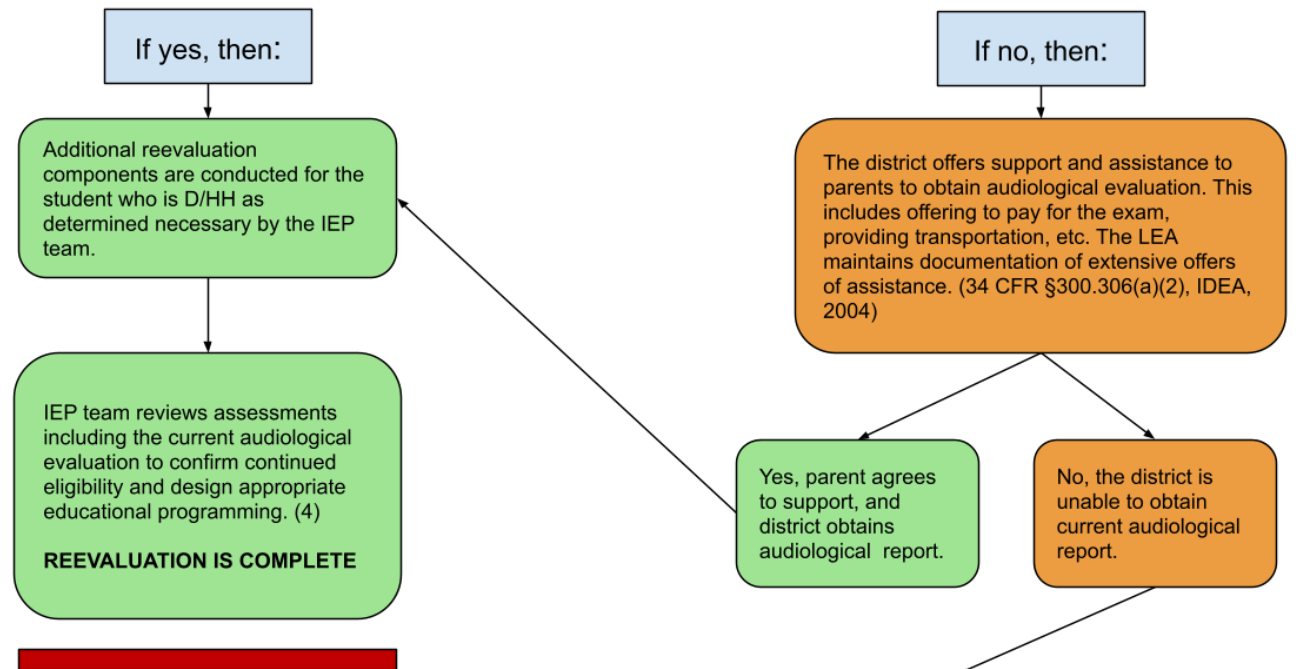
Adapted by the Resource Materials and Technology Center for the Deaf/Hard of Hearing from Reevaluation Process for Determining Eligibility for Students with Visual Impairments, Florida Instructional Materials Center for the Visually Impaired. Approved by the Florida Department of Education, Bureau of Exceptional Education and Student Services.
Revised December 2021. For more information, contact info@rmtcdhh.org

Reevaluation Process for Students who are Deaf or Hard of Hearing

Has the parent or guardian provided consent for a reevaluation of a student who is deaf or hard of hearing as part of the mandatory triennial evaluation process? (1)



Did the parent/guardian or school-contracted audiologist provide a copy of an audiological evaluation?



A reevaluation may consist of assessments determined by the IEP team and review of an audiological evaluation report. This information is reviewed by the IEP team and appropriate educational programming is designed. Documentation should be listed on the IEP and placed in the student's cumulative folder of the LEA's due diligence to secure a current audiological report.

Addendum

DHH – Deaf or Hard of Hearing
ESE – Exceptional Student Education
FAPE – Free Appropriate Public Education
IEP – Individual Educational Plan

LEA – Local Education Agency
RtI – Response to Intervention
ToDHH – Teacher of the Deaf and Hard of Hearing

(1) If a student receives multiple ESE services, other disability areas may choose to opt-out of a three-year reevaluation based on review of data. However, students who are deaf or hard of hearing must be reevaluated every three years. This includes a minimum of an audiological evaluation report and, if the team deems it appropriate, other formal evaluations. Parents have the right to refuse consent for reevaluation. In the event a parent refuses consent for reevaluation, services would continue to be provided based on previous evaluation data.

(2 and 3) If a parent explicitly refuses consent to reevaluate, the IEP team can consider mediation or due process.

(4) For a three year re-evaluation, an existing audiological evaluation report should be reviewed by the IEP team including a member who is knowledgeable about hearing levels and their impact on access to FAPE to determine if the provided information meets the State Board of Education Rule for eligibility ([Rule 6A-6.03013, F.A.C.](#)). The time criteria for an existing audiological evaluation report can vary depending upon the student and circumstance, but the audiological evaluation should be reviewed for updates at least every three (3) years.

Note: In the event that a vision condition is concomitant with a hearing loss, the team should review the eligibility criteria for dual-sensory impaired.

Adapted by the Resource Materials and Technology Center for the Deaf/Hard of Hearing from Reevaluation Process for Determining Eligibility for Students with Visual Impairments, Florida Instructional Materials Center for the Visually Impaired. Approved by the Florida Department of Education, Bureau of Exceptional Education and Student Services.
Revised December 2021. For more information, contact info@rmtcdhh.org