

WE

SEE...



YOU'RE

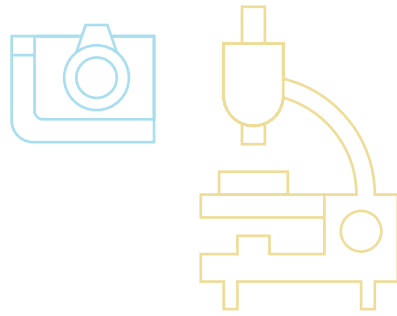


OF

FULL



PROMISE.



**Bring us your academic,
your athletic, your quirky,
your artsy, your “labels-
don’t-apply-here” selves.**

**We see the real you,
and we can help your
genuineness shine through.**



**We know you’re just getting started
discovering who you are and defining
your own future. Pingree gives you three
crucial things to help you figure out who
you want to be, what you want to do, and
what values you hold dear:**

SPACE

The physical spaces of our school—from our academic center and arts wing to our resource centers and athletics facilities—are thriving, catalytic spaces for you to explore, create, connect, reflect, dream, and discover. You have our full permission to make this space your own.

TIME

Because you are up for the challenge, we can help you uncover your talents and become the thinker, doer, leader, creator, and achiever that you aspire to be. We know it will take time for your interests and passions to unfold, and we respect the process. Your classes will be challenging, your days will be full, and each moment will be well spent.

ATTENTION

Achieving your goals is going to take immense hard work, which is why our entire community is dedicated to being there for you at every turn—and we expect you to be there for others. It’s the Pingree way.



What will you see at Pingree?

Pingree School is a vibrant, independent secondary day school located on Boston's North Shore. When you arrive, you'll see a community of ambitious students being challenged in a place where hard work and great fun coincide. You'll have teachers who will assign some of the most thought-provoking material you've ever encountered, at a pace that will meet you where you are and stretch your abilities. You'll have access to state-of-the-art facilities where you can find (and fuel) your passions and take them to the next level. And you'll experience a truly supportive and inclusive learning environment that respects truth, curiosity, creativity, humor, and independent and imaginative thinking. Pingree will introduce you to new activities and fields of study, redefine failure, and celebrate your successes. All we ask is that you arrive ready to take advantage of the opportunities you see here.

***YOU'RE NOT
JUST LOOKING
FOR THE "RIGHT"
ANSWERS.***



You're seeking knowledge.

Because you're motivated, curious, and ready to test your mind, you'll meet your match at Pingree. Our approach to learning is high-spirited and intellectually thrilling. We will encourage you to engage deeply in navigating and solving complex problems, forming and defending original ideas, listening carefully, and communicating effectively. Our faculty members are down-to-earth, approachable, and eager to challenge you while also learning alongside you. Our mission-driven advisory program links you and your family to a faculty advocate on campus who will get to know you well and look out for your best interests, mentoring and supporting you as you navigate high school. You'll emerge from Pingree smarter and wiser, equipped with the knowledge and skills to succeed in college and beyond. You'll also know yourself better, and have the confidence, poise, and values to carry yourself forward.

LEARNING HAPPENS IN AND OUT OF THE CLASSROOM.

Pingree Pillars

The Pingree academic curriculum is designed to foster critical thinking, discipline of mind, and civic engagement. Pingree students learn to:



NAVIGATE

complex information by gathering, exploring, and assessing sources with adaptive and flexible thinking



ORIGINATE

in thought and action with imagination, confidence, creativity, and an innovative spirit



COMMUNICATE

effectively through written, spoken, non-verbal, and creative means



PARTICIPATE

fully in the life of the community by collaborating, asking questions, initiating ideas, taking risks, and leading by example



RELATE

with empathy by seeking to understand diverse perspectives while being mindful of the impact of actions and words on others and on the environment

“People really know each other here. There’s a genuine connection between students and faculty members, and that’s what makes Pingree the wonderful and welcoming place that it is.”

LEN WILLIAMSON '09
DEAN OF STUDENTS

H-Block

With an ever-changing list of electives, you can participate in a rich variety of classes beyond your core subjects. Most H-Block electives are pass/fail and provide conflict-free time for you to try out new courses and take intellectual risks. Courses range from *Failure Analysis in Engineering* to *Hip-Hop Grooves* to *Introduction to Debate*.

Experiential Learning

We believe in learning by doing—by taking initiative, making your own decisions, meeting new people, and getting your hands dirty. Our **Learning Across Borders (L.A.B.)** program gives you a chance to immerse yourself in a new culture through international exchanges, while the **Local L.A.B.** program allows you to visit the cultural and natural sites that surround Pingree’s campus. Our **Civic Engagement and Service** opportunities provide meaningful ways for students to serve the local community beyond Pingree and practice social justice.

“Our faculty love learning and love teaching, and they bring that joy to the classroom. They’re forward-thinking, kind, curious. They are reflective and smart. They focus on the relationships and the people in this community as much as they do the ideas that we’re imparting.”

KRISTIN BROWN
ASSISTANT HEAD OF SCHOOL FOR ACADEMIC AFFAIRS

“I like to think that there is no typical day at Pingree, that every day is different, is an adventure, is a time to learn, to grow, to stretch outside of one’s comfort zone, to make friends, to try new things, and ultimately to leave in a different place than when you entered.”

TIM JOHNSON
HEAD OF SCHOOL

Senior Projects

There’s no room for “senioritis” at Pingree. Two weeks before graduation, you’ll dive into one of your most compelling assignments: an independent project that gives you real-world experience. Projects can be service-oriented, career-focused, or allow you to pursue a personal ambition.

YOU HAVE A STORY TO TELL.

Our numerous visual and performing arts options allow you to find and express your authentic voice. You can take to the stage or work behind it, write poems or start your first novel, sing a ballad alone or join a group of talented singers, and sketch a self-portrait or paint a mural. Your teachers are accomplished artists and professionals who share their own iterative processes, teach you tangible skills, and encourage you to stay focused as you work hard to improve.



At Pingree, we believe that art is a unique portal, allowing us to see one another better and to understand and process the world around us.

***YOU LEAD FROM
THE FRONT OF
THE PACK...***

Every day at Pingree, students act as leaders in our school community through their participation in sports, clubs, and afternoon activities. Our athletic program encourages you to compete at the highest level—we've celebrated many championship titles—or don a uniform for the very first time. Pingree has 30 clubs and student groups dedicated to the arts, current affairs, community service, journalism, science and engineering, multicultural development, activism, green living, and more. Our afternoon offerings are an extension of the classroom, allowing you to form unbreakable bonds with classmates, develop your mental and physical muscles, and build character as you take risks, develop resilience, and gain independence.

***...OR FROM
THE BACK.***





Pingree History

When you walk through the front doors of Pingree, you can see and feel its history. Our school was once a loving family home, and the surrounding acres operated as a working farm. Sumner and Mary Pingree raised their three sons here and ran Flying Horse Farm* on the property before gifting the house and land for the establishment of Pingree School. The Pingree family no longer resides here, but their values certainly do. Attention to one another, exploration, collaboration, and hard work have always been treasured here. Achievement and effort have always been understood.



**One of our symbols—Pegasus—is a nod to this special piece of Pingree's history.*

The Pingree Way

We're proud of our strong academic programs, comprehensive support resources, and experiential learning offerings. And there's so much more to us.

A Caring Community

All of us at Pingree are fully engaged in the intellectual and personal growth of every member of our community. We support one another in realizing our goals and dreams, now and in the future. The friendships you make at Pingree with fellow students and teachers are relationships you'll cherish long after you leave.

A Healthy Balance

We understand the imperative of balancing work and play, and we value health and wellness just as much as academics. That's why time spent learning is always balanced with time spent with friends, teachers, advisors, and teammates.

A Boost of Confidence

We constantly strive to ensure that Pingree is an environment primed for growth and reflection. With the space, time, and attention you'll receive at Pingree, you'll develop the conviction and confidence that will guide you through high school—and all the years beyond.

“What I love most about learning is that there's always another question to ask.

Pingree really fosters that kind of curiosity, and I think that's what I love most about it.”



COLETTE COMBS
RECENT GRADUATE
HAMPSTEAD, NH

“I worked very closely with my college counselor to find the best school for me. I feel confident knowing that the people at Pingree really helped me get on the best path. **I feel confident that whatever my future holds, it will be exactly what I want to be doing.**”



KATELYN MASSE
RECENT GRADUATE
READING, MA

“I think the coolest thing about being a student here is the connection between academics and athletics.

Pingree connects all four grade levels. Coming in as a freshman, I was playing football for the first time, and I became great friends with the quarterback, who was a senior captain. I wouldn't get that anywhere else.”

KOZE WONOKAY
CURRENT STUDENT
IPSWICH, MA



“There are so many opportunities and so many people to meet. Just give all of yourself to Pingree. Don't be afraid to try this, or to try that—just do it. Do what makes you happy. **Do something you never thought you would see yourself doing.** You never know—you might find your new passion.”

VITO VISCONTI
RECENT GRADUATE
NORTH ANDOVER, MA



1/3

of students receive
tuition assistance

375
students

73%

of Pingree seniors who
applied early decision to
college were accepted

TOP THREE MAJORS
AMONG PINGREE
ALUMNI INCLUDE



37%

SCIENCES/ENGINEERING



33%

LIBERAL ARTS/HUMANITIES



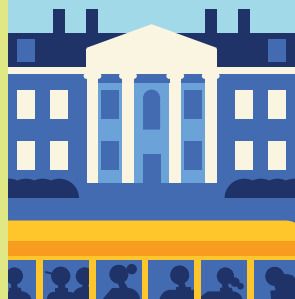
22%

BUSINESS/ECONOMICS

PINGREE AT A GLANCE

53

towns and
communities
represented



5

bus routes
with direct access
to New Hampshire
and Cape Ann

98%

of alumni say that a
faculty or staff member
had a transformative
impact on their lives

150

full-credit courses
and 50 half-credit
H-Block courses



FLY
HIGH
PEGASI!

>90%

of faculty participated in
professional development opportunities
in the last three years

20%

of our student
body identify as
people of color

45

local L.A.B. opportunities,
plus international L.A.B.
exchanges annually

30:1

college counselor-to-student ratio
(Boston independent school average is 42:1,
MA public school average is 425:1)

What You'll See When You Visit

Our campus is centered around the main building, originally built in 1933 and since renovated to house academic spaces and resource centers, as well as the dining commons, Arts Wing, Center for Performing Arts, Community Learning Garden, and Library Learning Commons with beautiful views of Pingree Pond. The surrounding 100 acres of land feature a state-of-the-art athletics center and facilities, recently renovated hockey rink, numerous sports fields and courts, interesting art installations, and many scenic views.

- 1 MAIN ENTRANCE
- 2 ROGERS HOUSE (HEAD OF SCHOOL RESIDENCE)
- 3 ATHLETICS FIELDS
- 4 TURF FIELD
- 5 COMMUNITY LEARNING GARDEN
- 6 H. ALDEN JOHNSON, JR. HOCKEY RINK
- 7 OUTDOOR CLASSROOM
- 8 ATHLETICS CENTER
- 9 ARTS WING
- 10 MARY WELD PINGREE CENTER FOR PERFORMING ARTS
- 11 MAIN SCHOOL BUILDING
- 12 EDUCATIONAL RESOURCE CENTERS
- 13 ACADEMIC WING
- 14 AILSA'S HOUSE (THOREAU HOUSE)
- 15 PINGREE POND
- 16 PINGREE BASEBALL AND FOOTBALL FIELD







Pingree
SCHOOL

537 Highland Street

South Hamilton, MA 01982

978.468.4415

pingree.org