



BIRCH GROVE
INTERMEDIATE

Birch Grove Intermediate Back to School Night 2022-23





NECESITA TRADUCCIÓN?

Por mensaje:

Ms. Shirley

510-912-3107



Agenda

Welcome

Intros

School Logistics

School-Wide Systems

Opportunities to Stay Connected





Hello!

Ms. Olivia Wong

Principal of BGI

You can find me at olivia.wong@newarkunified.org

BGI TEAM

Our star players of Grades
3-5



3rd Grade

Ms. Fujikawa

Rm 4

Ms. Jocson-Ramirez

Rm 5

Ms. Musial

Rm 7

Ms. Keith / Ms. Muzaffar

Rm 4



4th Grade

7



Ms. Kotake

Rm 6

Mr. Accarizzi

Rm 11

Mr. Smith

Rm 13

Mr. Fee

Rm 16





Support Staff



Mr. Bravo

P.E.

Mr. Brioso

Science

Ms. Hernandez

Bilingual Aide

Ms. Schubert

RSP

Ms. Angela

Librarian



Office Staff



Ms. Calderon

Office Manager

Ms. Carissa

Attendance Clerk



Fabulous people who help keep our school functioning:

Ron, Custodial

Vy, Custodial

Carolina & Team, Kitchen

Debbie, Campus Monitor

Sylvia, Campus Monitor

Patricia, Campus Monitor

TBD, Campus Monitor

Darne, Aide

Ellie, EBAC

Ms. Oteyza, Psychologist

Shirley Del Rio, Translator

Many more....



BGI Logistics

Our school day



Bell Schedule

7:30 Breakfast

8:08 Transition to Classrooms

8:10 Instruction Begins

9:45-10:00 Recess

11:30-12:10 5th Lunch

11:55-12:35 4th Lunch

12:20-1:00 3rd Lunch

2:32 Dismissal

(1:05 Friday Early Dismissal)



Please drive all
the way
forward

For drop off and pick up



Breakfast & Lunch

Every student eats for free!

Breakfast (or Brunch) & Lunch

1st serving is free

**FREE
MEALS**
FOR ALL
STUDENTS



Goal: ALL families fill out application



ATTENDANCE

Tardy

Gates close at 8:10. Students then enter through the office to receive a tardy slip.

Absent

Call the office if your child is out. The office will make phone calls to verify absence.

Picking Up Early

Stop by the office to sign students out for the day.



When your child is not feeling well...

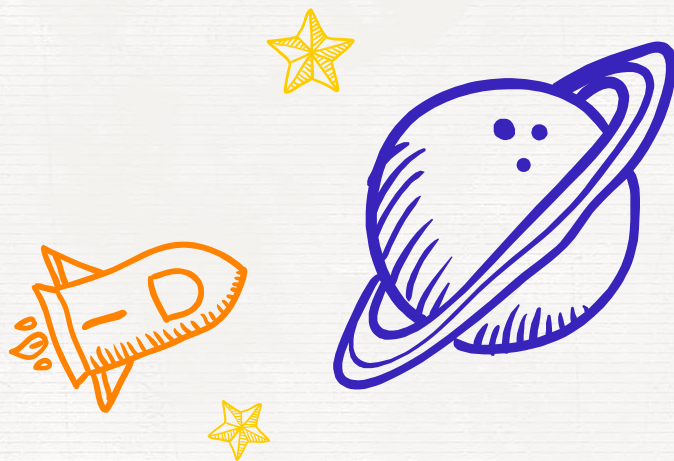
COVID-19 Symptoms

- | | |
|-----------------------|--------------------|
| -Loss of taste/smell | -Fever or chills |
| -Difficulty breathing | -Cough |
| -Headache | -Nausea / vomiting |
| -Diarrhea | -Sore throat |
| -Fever | -Runny nose |

- Positive = 5 day
- Test on day 5 with at-home test or lab test. Return day 6
- Exposures can return to school without symptoms
- Get healthcare provider note of alternative diagnosis
- Email bgioffice@newarkunified.org



[Covid-19 Parent Flowchart](#)



School-Wide

Grades 3-5 at BGI



Project Based Learning School (PBL)

S.T.E.A.M. Initiative



Positive Behavior Intervention and Supports (PBIS)

Be Responsible

Be Respectful

Be Safe



Social Emotional Learning Curriculum

Character
Strong

VIBs 🐾🐾



<https://characterstrong.com/>





Join our Committees

Get Involved and let your voice be heard

School Site Council (SSC)



Purpose:

- Develop & recommend the Single Plan for Student Achievement (SPSA) to the Board of Education
- Review Implementation of the SPSA Plan
- Establish a budget for SPSA
- Collaborate on the Comprehensive School Safety Plan

Members:

- Five parents with one alternate
- Three teachers with one alternate
- One other school employee
- Principal

Meets virtually once a month. Submit your interest [HERE](#)

English Learner Advisory Committee (ELAC)

Committee:

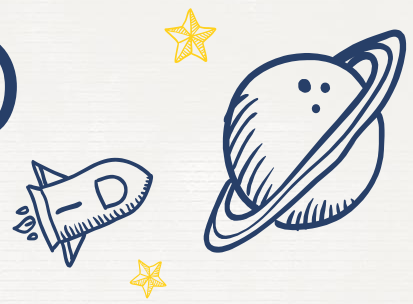
- Advises the principal and staff in the development of a site plan for English Learners
- Assist in the development of the schoolwide needs assessment
- Identify and recommend ways to make parents aware of the importance of regular school attendance
- Elect at least one member of the ELAC to the District English Learner Advisory Committee (DELAC)



Virtual Meetings, 6:00-7:00 pm

- Sept
- Nov
- Mar
- May

Parent Teacher Club (PTC)



25

Join PTC for fundraising events, supporting teachers in their classrooms, and in providing opportunities for students.

- Teacher Appreciation
- Fundraising Events
- Yearbook
- Walk-A-Thon
- Birch Grove Online Store

Visit the website!

<https://www.birchgroveptc.com/home>



Coming Soon!

Communication upgrade



ParentSquare



We Are Hiring!

Join our Team:

Campus Monitors (flexible hours)

Custodial (sub and full time)

Substitute Teacher (flexible days)

Email Ms. Wong for more info
olivia.wong@newarkunified.org



Classroom Zoom Links

[Click HERE](#)





MANY THANKS!

You can find me at
olivia.wong@newarkunified.org
bgioffice@newarkunified.org

Follow, Like, Connect



Birch Unified



Birchgroveintermediate



BGI_NUSD

