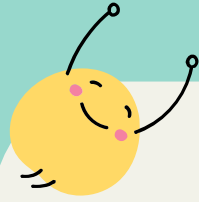


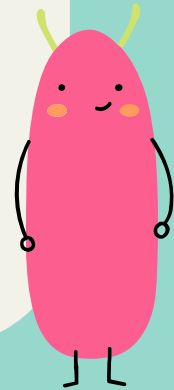


**Cherokee Ridge
Elementary
SCHOOL
IMPROVEMENT PLAN**



1.

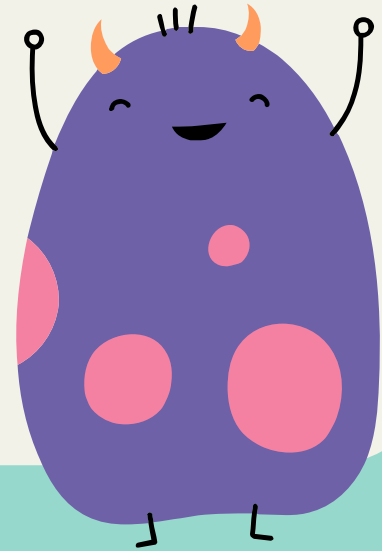
Improve
ELA and Reading for
all students



*CRES will increase ELA student proficiency to 70%+
for students in grades k-5 as measured by MAP
Assessment and GKIDS for Kindergarten.

*

*Decrease by 12% the number of students who miss
greater than 10% or 18 days of school



ACTION STEPS!



Assessments

- *Consistent assessment practices
- *MTSS



Music

Music program that integrates ELA



Family Engagement Coordinator

Help parents implement strategies for at home learning



Additional Teachers

- *Implement Tier 2 and 3 supports
- *Accelerate curriculum



Additional Resources

Purchase books, kits, and other materials



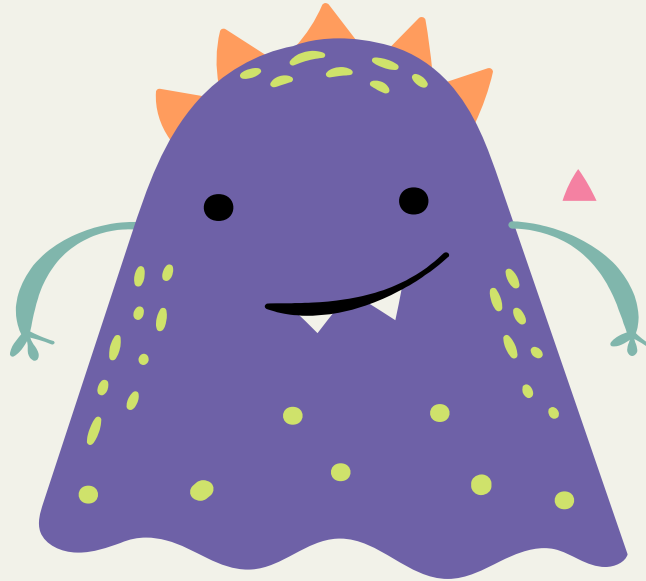
Online Programs

Reading Plus, Education Galaxy, Raz Kids, etc.



Technology

Purchase and repair
technology equipment
and software



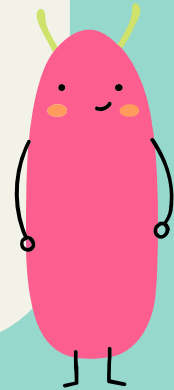
Attendance

School wide plan to
address chronic
attendance concerns

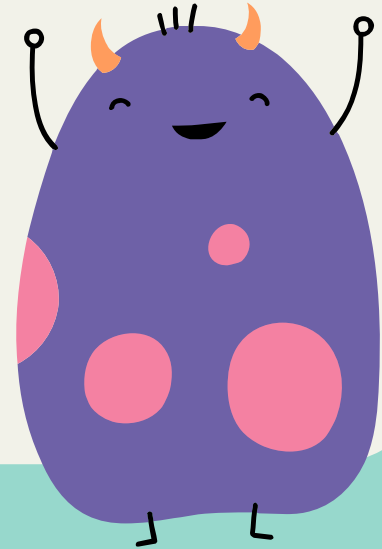


2.

**Improve
support for all
students and staff**



- *Teachers will share data, instructional ideas, and curriculum plans
- *Teacher mentoring program
- *Teacher leaders identified and supported



ACTION STEPS!



Teacher Mentoring Program

Support for new teachers



Teacher Leaders

They will make decisions regarding instruction, assessment, data, and curriculum



Leader Academy

Support growth of future teacher leaders in the school



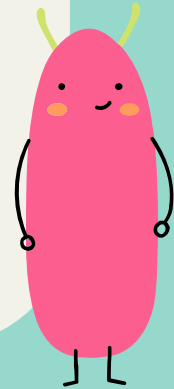
Funding for ELA Support

Funding for various instructional programs and opportunities for teachers



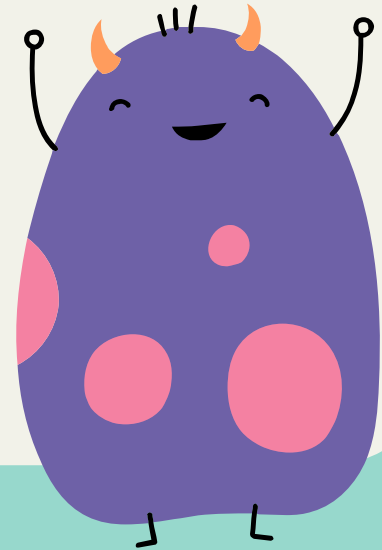
3.

**Improve
community involvement**



*COVID decreased ability to facilitate community involvement in the school

*Implementation of School Council, PTO, and parent volunteers



ACTION STEPS!



Family Engagement

Schedule events for families



School Council

Coordinating a team to implement a school council



Record of Parent Contacts

Teachers will record parent meetings, phone calls, and participate in events



Data Nights

Family Engagement Coordinator will facilitate data nights in October and February using MAP data