

NEW BRAUNFELS ISD FACILITIES PLANNING COMMITTEE



Facilities Planning Committee: Overview

- 46 Diverse Community Members
- 10 Meetings (2/09, 3/02, 4/06, 4/20, 6/02, 6/15, 6/22, 6/29, 7/13, 7/20)
- Presentation/Question/Comment Format
- Tasked with Creating a Community Recommendation Regarding a Potential Bond
- Unanimously Supported Recommendation



Facilities Planning Committee:



NEW BRAUNFELS
INDEPENDENT SCHOOL DISTRICT



Search New Braunfels ISD



[Home](#) | [Contact Us](#) | [Translate](#) | [Employees](#)

Home of the New Braunfels Unicorns!

[About NBISD](#)

[Programs](#)

[Campuses](#)

[Students](#)

[Parents](#)

[Community](#)

[COVID-19](#)

Quicklinks

[Bad Weather Procedures](#)

[Communications Home](#)

[Department Directory](#)

[e-Blast Subscription](#)

[Facilities Planning Committee](#) ▶

[Graduation Videos](#) ▶

[Flyer Guidelines](#)

2021 Facilities Planning Committee

Proposed Timeline*

Board decision to form committee – Monday, December 14, 2020

Began seeking applications – Friday, December 18, 2020

Application period closed – Monday, January 11, 2021

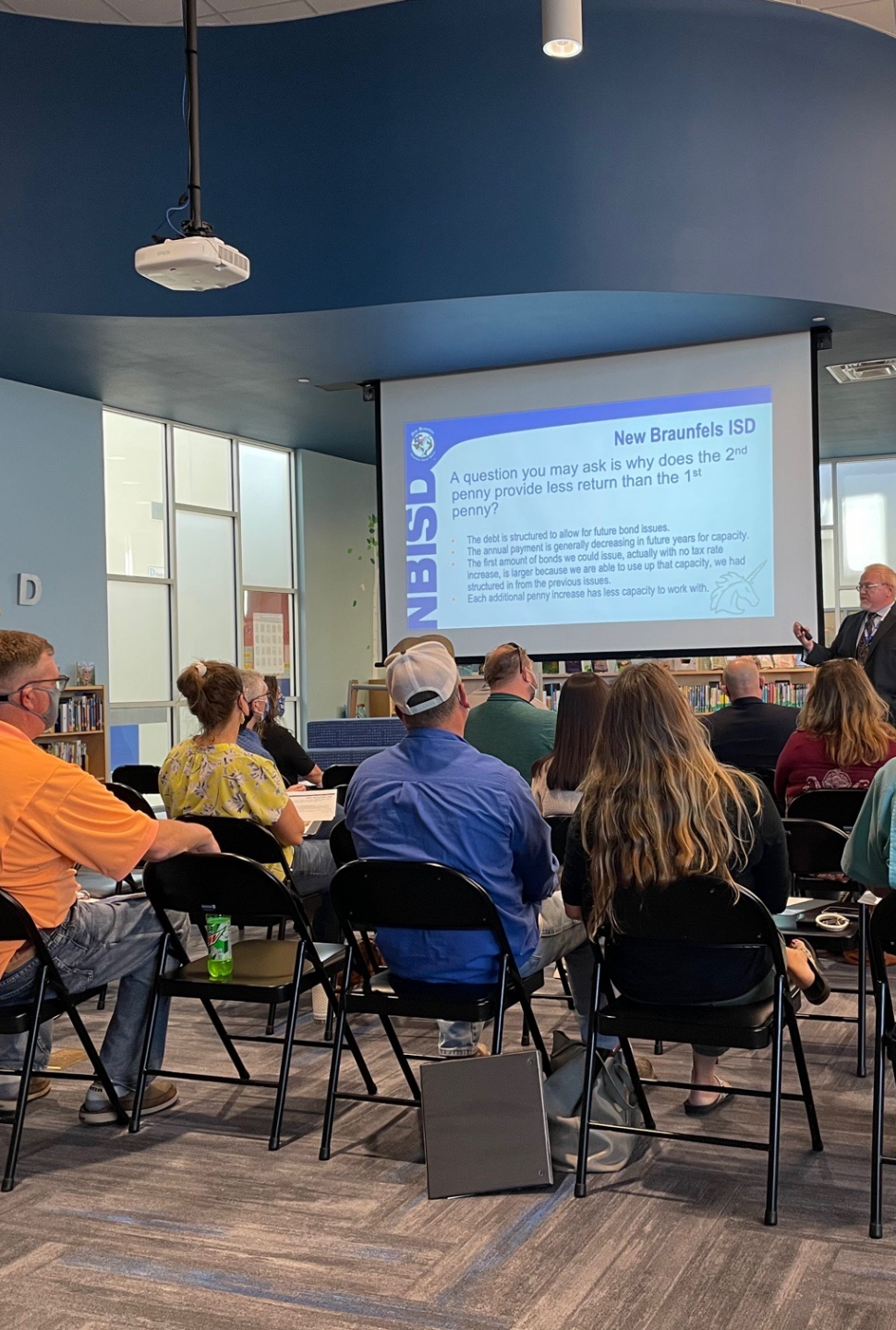
Applicants notified – by Friday, January 15, 2021

First Committee meeting – Tuesday, February 9, 2021

Bond Recommendation to the Board –TBA

Last Day the Board can Call a Bond for November 2021 - Monday, August 16, 2021

Bond Election - Tuesday, Nov. 2, 2021



Meeting Locations

- New Braunfels Middle School/Long Creek 9th Grade Center
- Veramendi Elementary
- New Braunfels Admin Center
- New Braunfels High School

- Tours/Presentations





Vision for the Future

- Growth of District
- Past/Current Bond Projects
- Plans for the Future
- NB Middle School Conversion to High School



Ten Year Forecast by Campus

			Current	ENROLLMENT PROJECTIONS								
CAMPUS	CAPACITY	2019/20	2020/21	2021/22	2022/23	2023/24	2024/25	2025/26	2026/27	2027/28	2028/29	2029/30
Lamar Elementary	528	357	389	424	493	528	542	613	667	727	788	850
Voss Farms Elementary	704	671	753	788	820	851	886	896	892	902	897	896
Veramendi Elementary	900	801	844	880	956	1028	1074	1108	1109	1139	1172	1202
Klein Rd Elementary	704	630	660	700	708	717	691	687	674	682	687	692





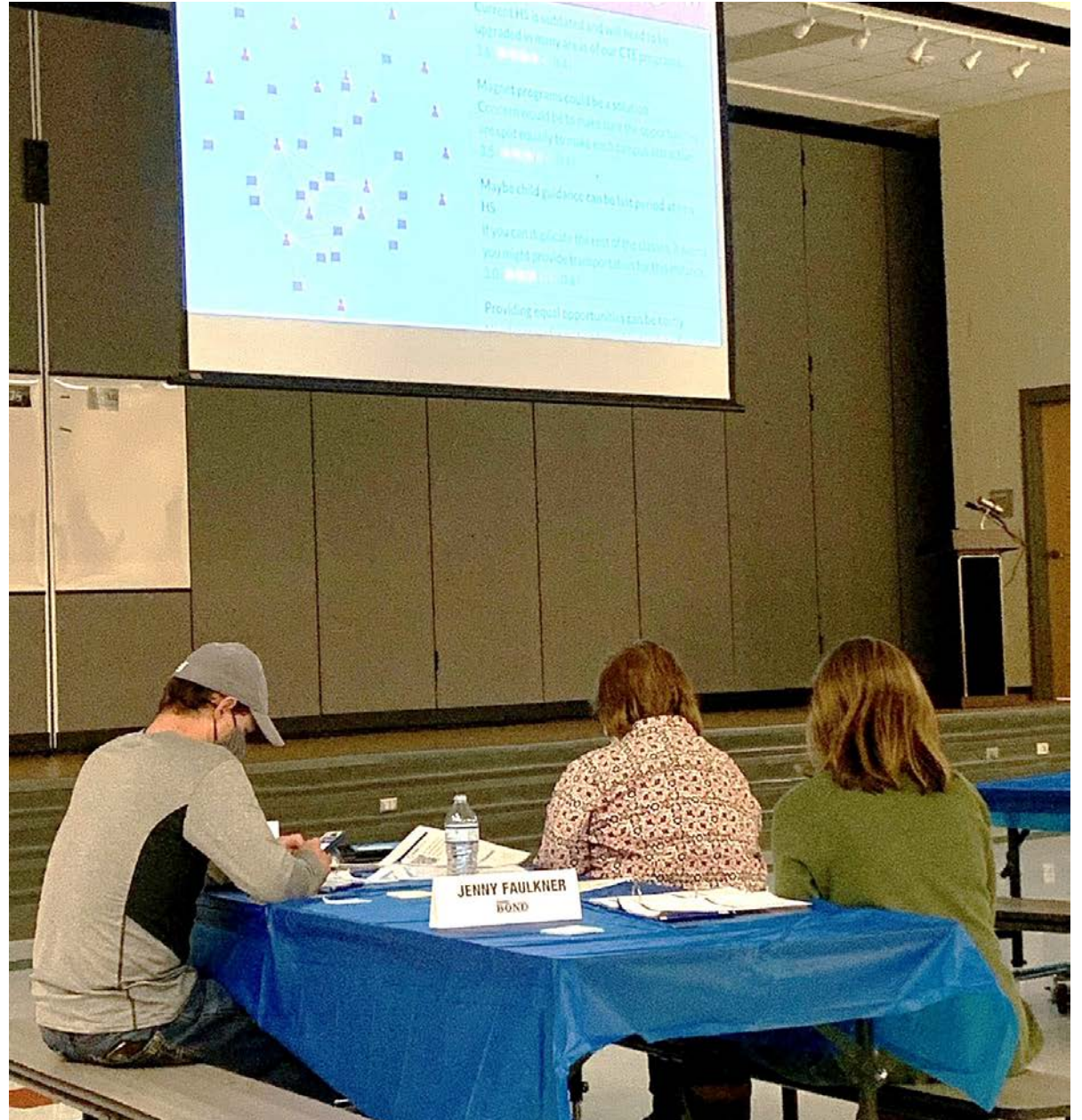
Educational Necessities

- How to Prepare Students for Their Best Future

What is needed? Where is it needed?

- CTE Programs
- Academics
- Athletics
- Fine Arts
- District vs. Campus





Feedback

- CTE programs are in need of updates and expansion to offer best opportunities.
- Construction Science, Robotics, Health Science programs provide successful careers.
- Do we need Culinary?
- Will programs be magnetized or duplicated?
- Opportunity for both High Schools is important.
- How will NBHS offer the same experience to students?



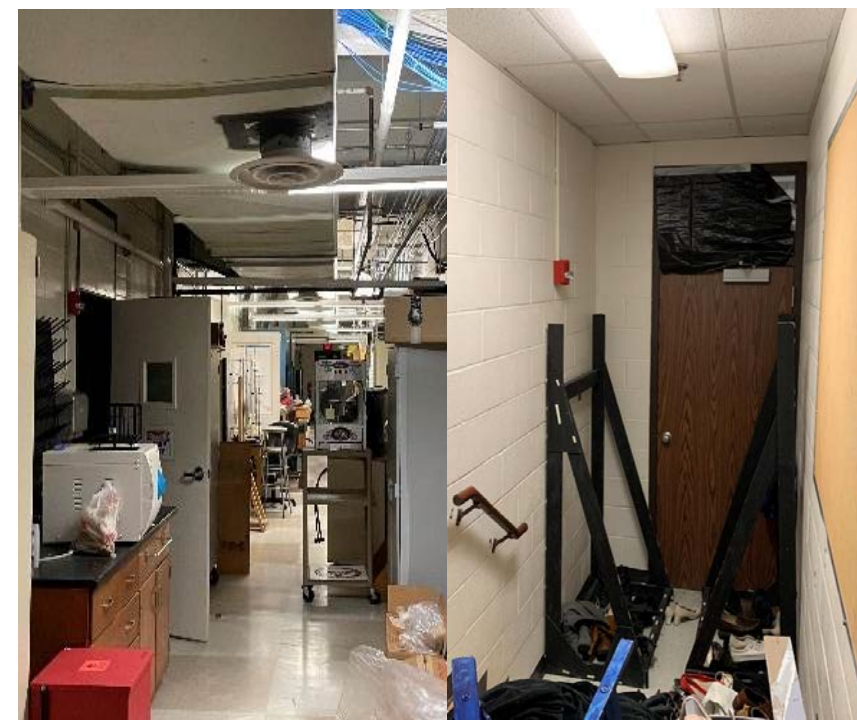


High School Evaluation

Long Creek
High School

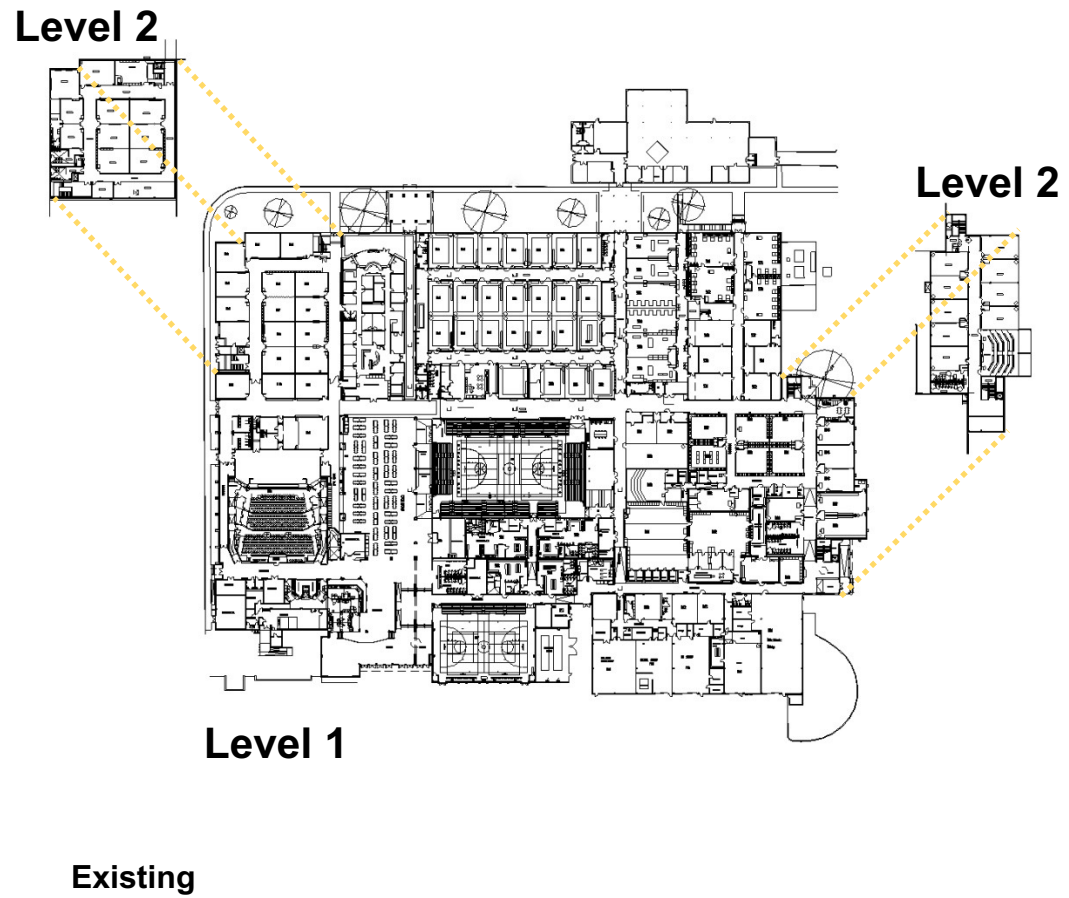
New
Braunfels
High School



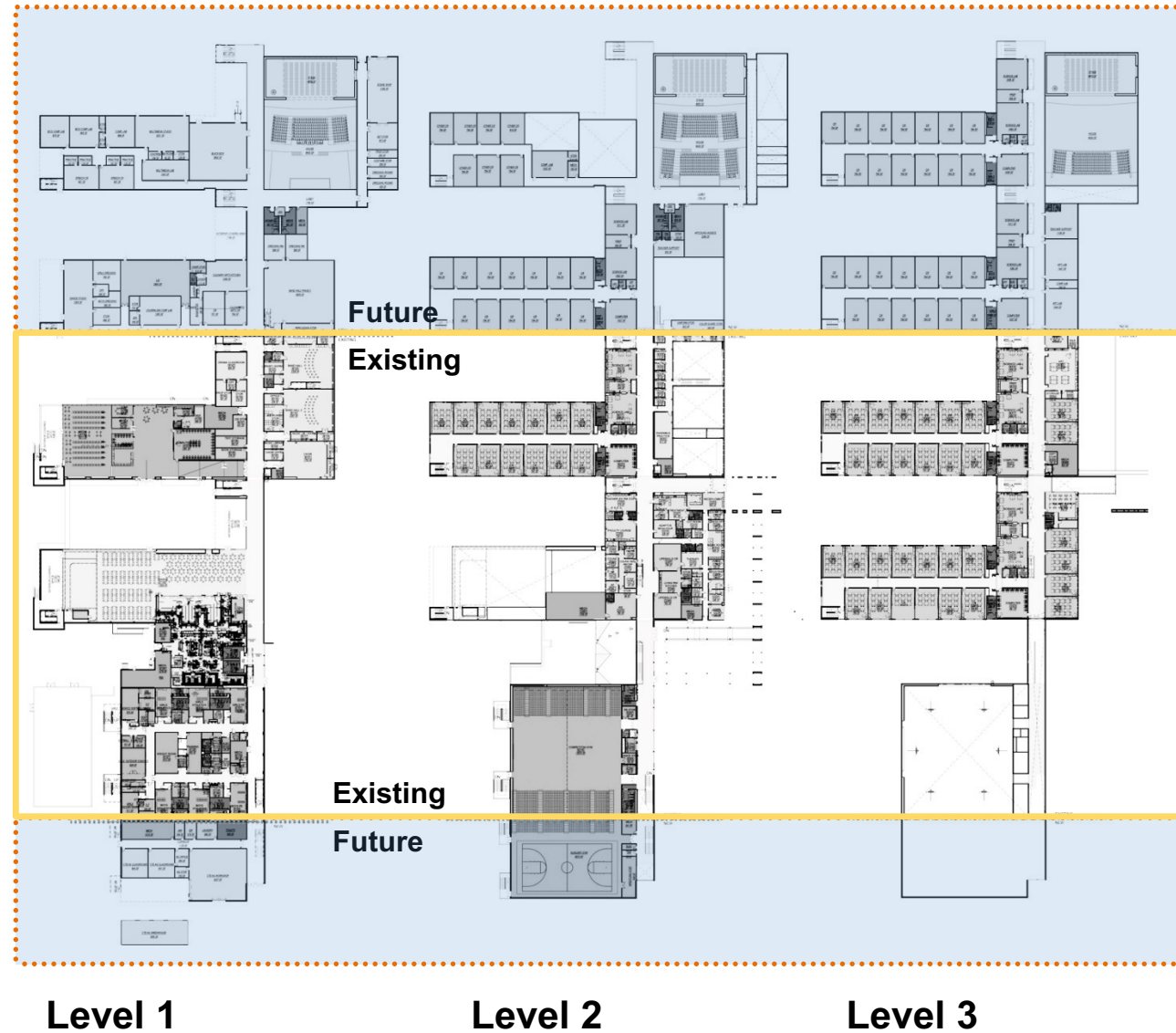




New Braunfels High School



Long Creek High School



Financial Considerations



Assessing
Priorities

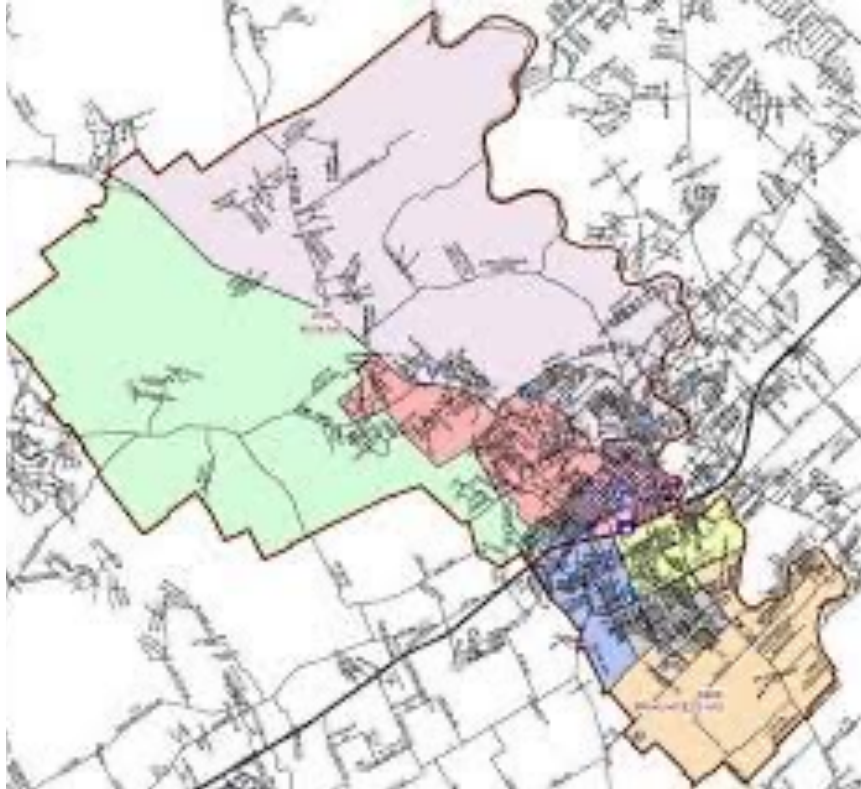
Tax
Implications
of Bond
Totals

Considering
Options



Facilities Planning Committee:

Summary



New Braunfels ISD Map



Address
District
Growth



Review Existing
Plans / Facilities /
Properties



Assess High
School
Experience



Review Financial
Options



Unanimous Recommendation



Touching ALL NBISD Students by Addressing needs of BOTH High Schools



Solving Capacity Issues for Veramendi ES, Klein Rd ES, Voss Farms ES, & Lamar ES



Providing New Playgrounds or Playground Shades to All Elementary Campuses



Updating NBHS Pressbox and Providing Artificial Turf to Baseball/Softball



Addressing District-Wide Needs for HVAC Maintenance, Technology and Vehicles



Finding a New Home for NBISD DAEP/SOC



Facilities Planning Committee: Unanimous Recommendation

2021 BOND PROJECTS	COST ESTIMATES
LCHS (Phase 1) - CTE, Field House, BB/SB	\$ 68,496,000
LCHS (Phase 2) - Academics	\$ 53,370,000
LCHS (Stadium Upgrades)	\$ 14,400,000
Zipp Road Extension & Traffic Lights	\$ 3,600,180
NBHS Pressbox, BB/SB Turf	\$ 8,004,000
NBHS (Phase 1) - Fine Arts, Athletics	\$ 96,273,650
NBHS (Phase 2) - Academics, CTE	\$ 96,424,900
Veramendi 2-Story Elementary School	\$ 42,000,000
Carl Schurz Conv to DAEP/Gateway	\$ 5,004,000
Klein Rd / Voss Farms Additions	\$ 7,560,000
Playground Upgrades	\$ 2,218,400
Playground Shades	\$ 754,000
Chiller/Boiler Replacements	\$ 2,369,850
Technology	\$ 6,600,000
Vehicles	\$ 2,000,000
Traffic Lights	\$ 1,000,000
Contingency/Inflation	\$ 40,000,000
Total Bond	\$ 450,074,980



Facilities Planning Committee: Unanimous Recommendation



NEW BRAUNFELS ISD FACILITIES PLANNING COMMITTEE

